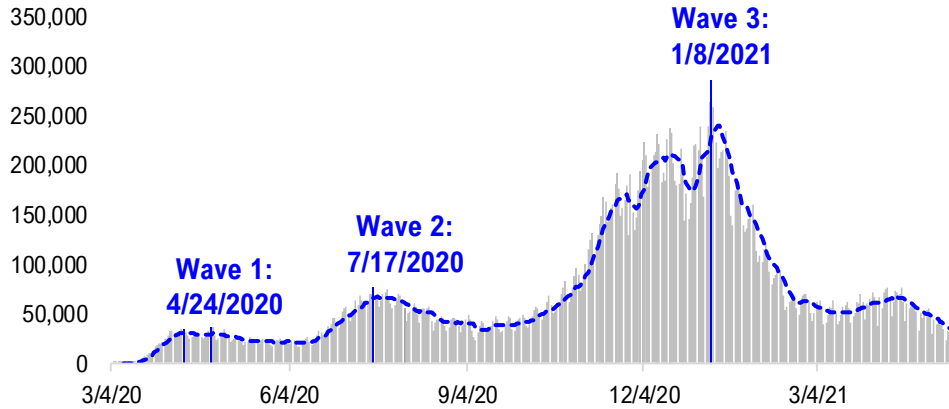


FSInsight Daily COVID-19 Chartbook

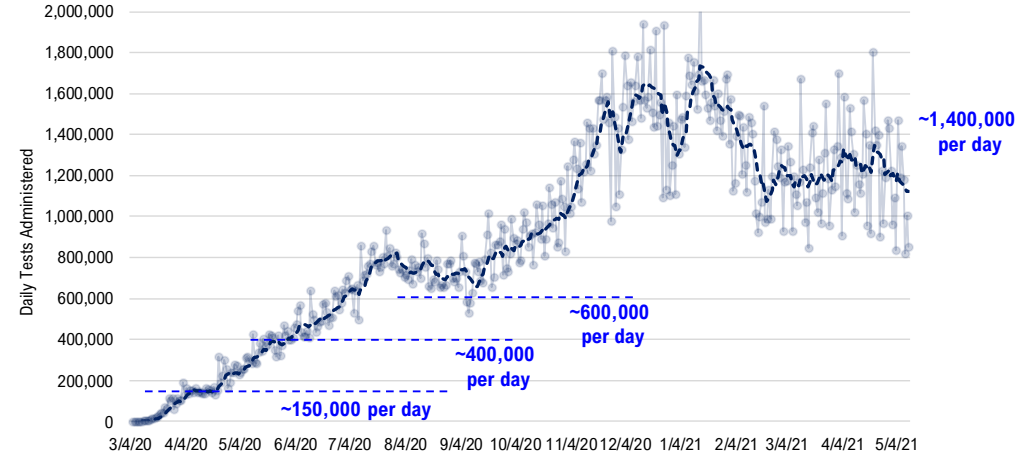


#1: USA COVID-19 Situation at a Glance...

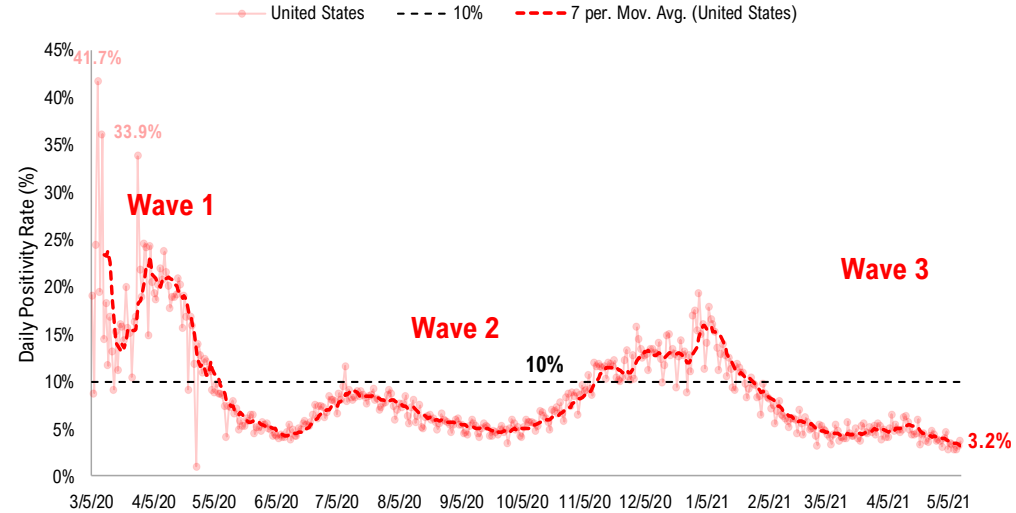
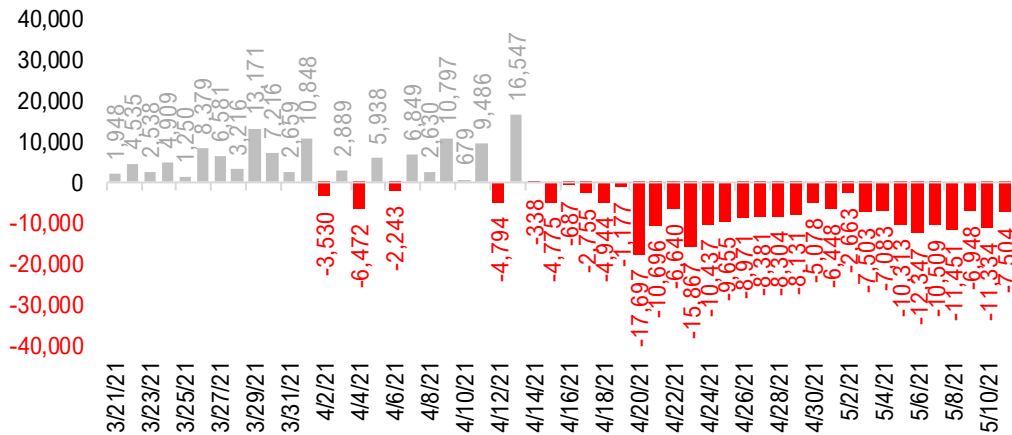
US daily new cases



USA total COVID-19 tests administered

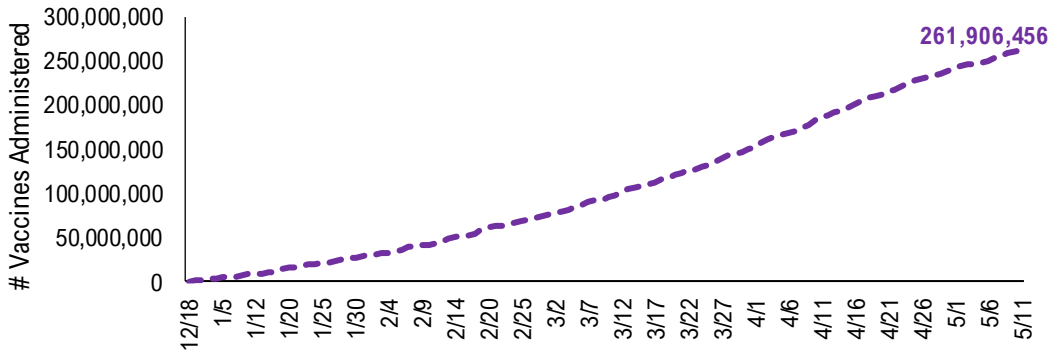


US daily new cases rolling 7D delta

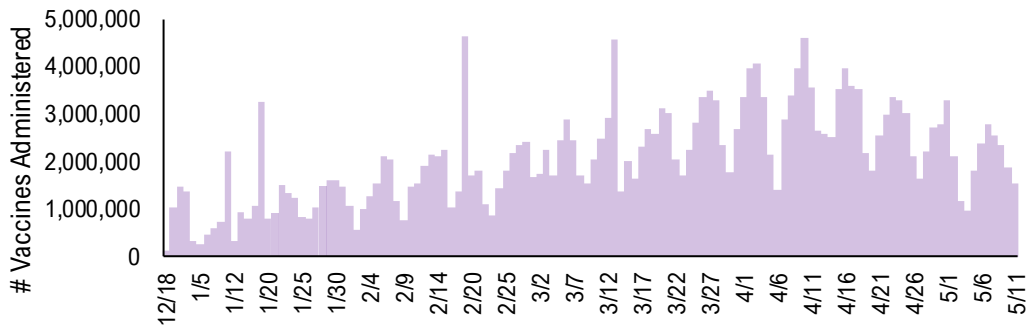


#2: USA COVID-19 Vaccination Progress at a Glance...

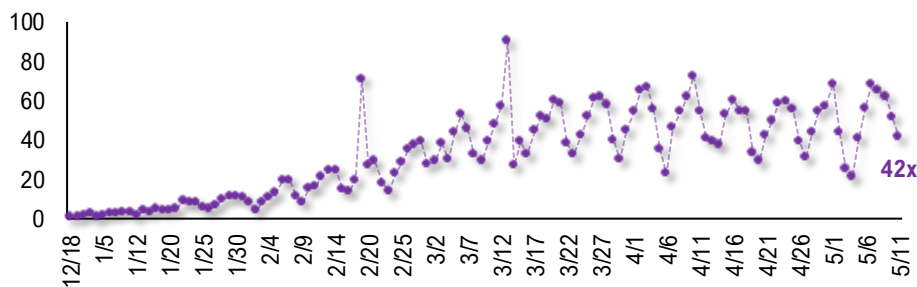
Cumulative Vaccines Administered



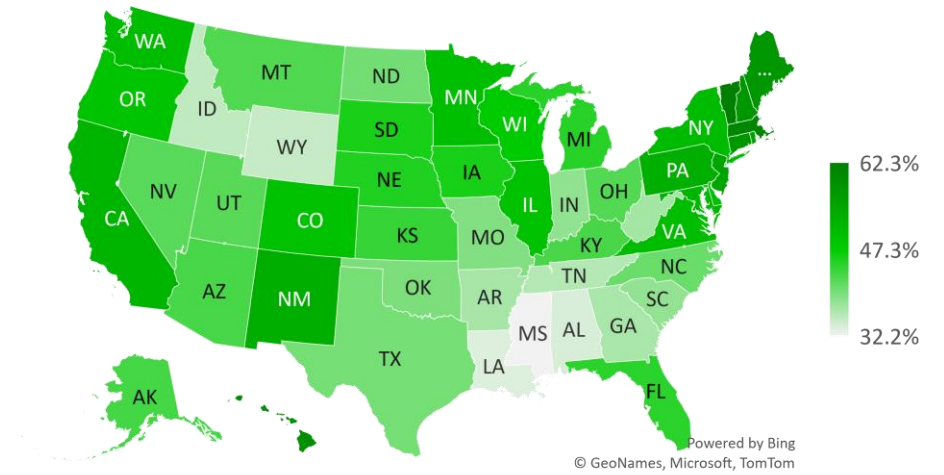
Daily Vaccines Administered



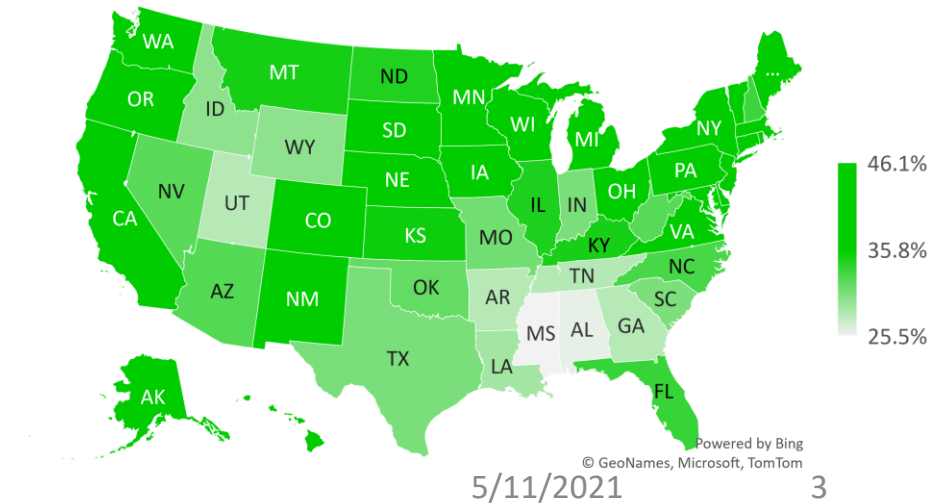
Daily Vaccinations / Daily Cases (7D Avg)



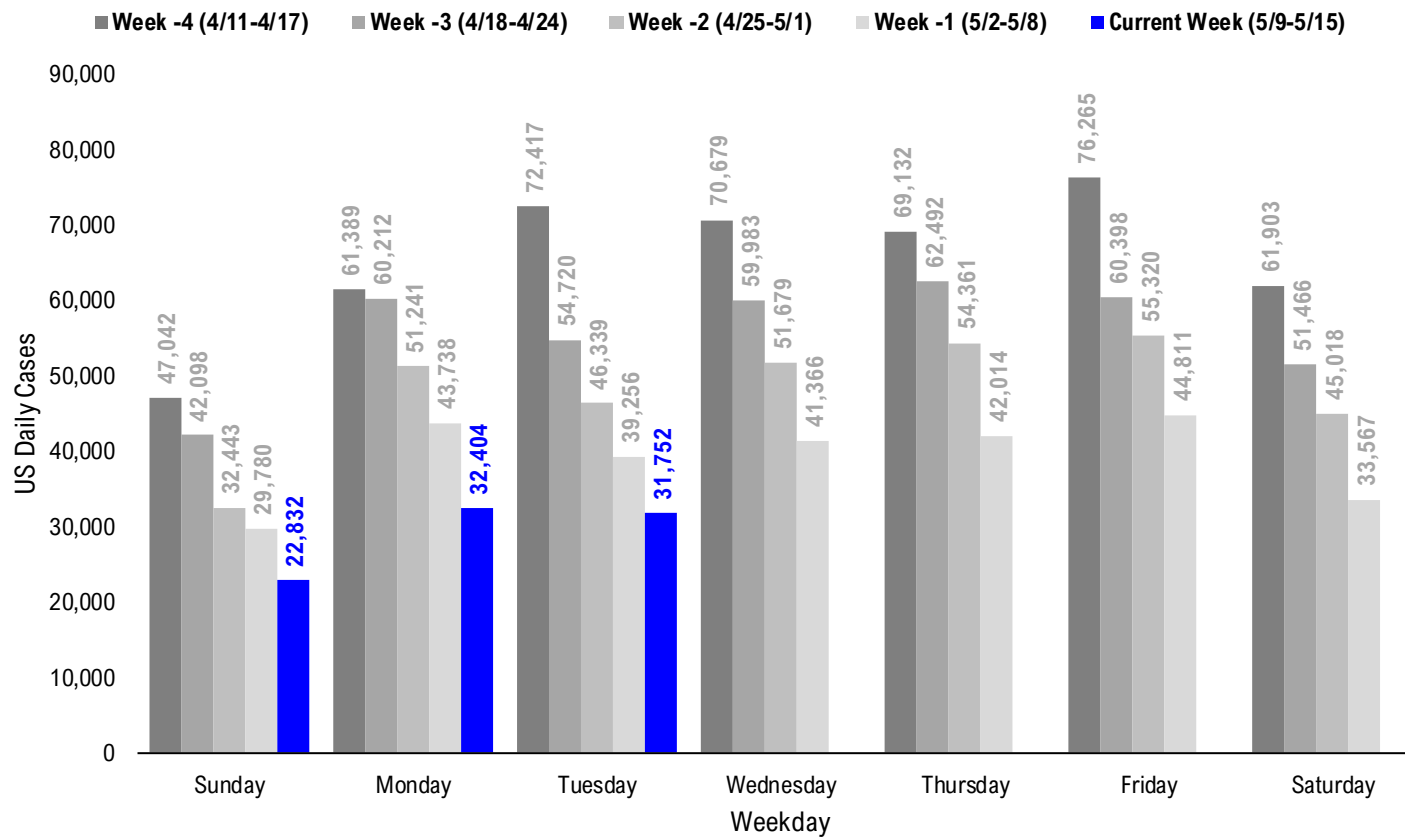
% State Population with at least One-Dose Vaccinated



% State Population Fully Vaccinated



#3: USA COVID-19 Daily Cases Weekday Seasonality (Past 4 Weeks) ...



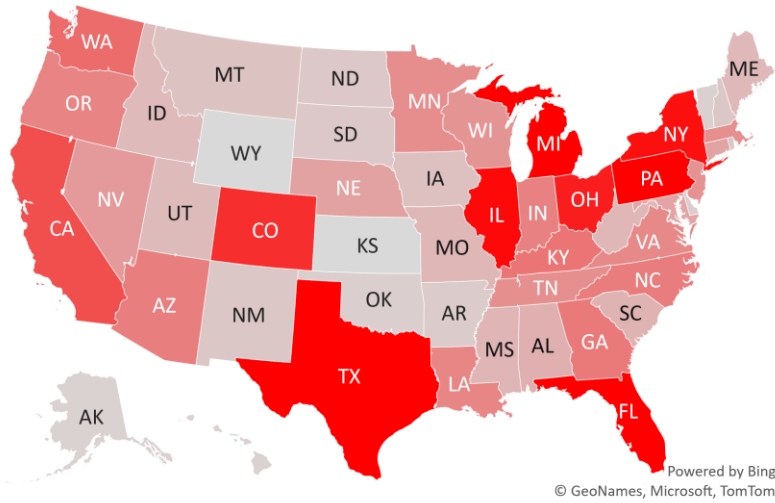
#4: USA State COVID-19 Situation at a Glance...

	Sorted Daily Cases		Daily Cases (3D avg) per 1mm residents				Hospitalization			
	% US Pop	% US GDP	Since Peak		# Days	% Decline in Daily Cases		7D Net Hospitalization		
			5/11	7D Delta		7D Net Hospitalization	7D Net Hospitalization / 7D New Cases			
United States	100%	100%	31,752	-7,504	88	-26	122	-89%	-3,945	-1.6%
States:										
1 Florida	6.5%	5.0%	3,263	-419	136	-28	123	-85%	-335	(1.3%)
2 Texas	8.7%	8.8%	2,859	-358	53	-9	124	-93%	-95	(0.8%)
3 Pennsylvania	3.9%	3.8%	2,385	-748	125	-71	157	-87%	-421	(2.7%)
4 Michigan	3.0%	2.6%	1,992	-535	157	-95	27	-82%	-592	(3.8%)
5 Illinois	3.8%	4.2%	1,562	-649	124	-37	179	-88%	-144	(1.0%)
6 New York	5.9%	8.1%	1,516	-657	92	-32	122	-90%	-547	(3.4%)
7 Ohio	3.5%	3.3%	1,411	+126	83	-10	152	-92%	-155	(1.8%)
8 Colorado	1.7%	1.8%	1,284	-235	179	-20	171	-83%	-8	(0.1%)
9 California	11.9%	14.6%	1,045	-304	36	-7	121	-97%	-87	(0.7%)
10 Washington	2.3%	2.7%	830	-376	103	-43	167	-81%	-8	(0.1%)
11 Kentucky	1.3%	1.0%	757	-15	83	-26	123	-93%	-19	(0.5%)
12 Georgia	3.2%	2.9%	720	+30	49	-11	121	-94%	-90	(1.9%)
13 North Carolina	3.2%	2.7%	699	-282	141	-35	122	-86%	-82	(0.8%)
14 Arizona	2.2%	1.7%	683	-18	81	+3	128	-95%	-38	(0.8%)
15 Indiana	2.0%	1.8%	663	-108	107	-24	157	-91%	-87	(1.3%)
16 Oregon	1.3%	1.2%	642	-92	127	-32	156	-69%	-21	(0.4%)
17 Louisiana	1.4%	1.3%	634	-349	164	+38	124	-86%	3	0.1%
18 Virginia	2.6%	2.6%	600	-171	58	-26	113	-94%	-120	(2.5%)
19 Minnesota	1.7%	1.8%	575	-420	152	-73	162	-89%	-94	(1.1%)
20 Tennessee	2.1%	1.8%	558	+16	101	-23	144	-93%	-92	(1.9%)
21 Massachusetts	2.1%	2.8%	555	-299	91	-20	122	-92%	-75	(1.3%)
22 New Jersey	2.7%	3.0%	536	-248	32	-68	122	-95%	-300	(7.1%)
23 Wisconsin	1.8%	1.6%	517	-204	59	-25	179	-95%	6	0.2%
24 Nevada	0.9%	0.8%	470	-6	137	-1	122	-86%	-50	(2.0%)
25 Nebraska	0.6%	0.6%	411	+155	97	+20	173	-93%	-18	(1.3%)
26 Connecticut	1.1%	1.3%	409	-8	116	-46	118	-92%	-72	(2.4%)
27 Maryland	1.8%	2.0%	399	-102	61	-31	121	-90%	-145	(3.8%)
28 Alabama	1.5%	1.1%	310	+310	45	+13	124	-96%	18	0.7%

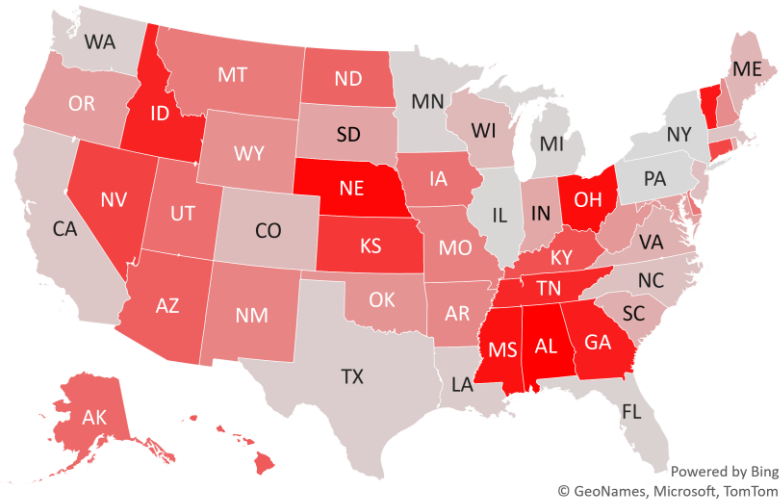
	Sorted Daily Cases		Daily Cases (3D avg) per 1mm residents				Hospitalization			
	% US Pop	% US GDP	Since Peak		# Days	% Decline in Daily Cases		7D Net Hospitalization		
			5/11	7D Delta		7D Net Hospitalization	7D Net Hospitalization / 7D New Cases			
United States	100%	100%	31,752	-7,504	88	-26	122	-89%	-3,945	-1.6%
States:										
29 South Carolina	1.6%	1.1%	287	-140	79	-29	121	-94%	-27	(0.7%)
30 Mississippi	0.9%	0.6%	267	+59	87	+8	122	-91%	9	0.7%
31 West Virginia	0.5%	0.4%	258	-86	163	-33	128	-85%	39	1.7%
32 Missouri	1.8%	1.5%	258	-54	38	-35	178	-95%	-37	(1.6%)
33 Maine	0.4%	0.3%	238	-179	173	-49	116	-72%	3	0.2%
34 Idaho	0.5%	0.4%	233	+24	107	-1	152	-91%	6	0.5%
35 Utah	1.0%	0.9%	224	-35	69	-11	123	-95%	-1	(0.0%)
36 Iowa	1.0%	0.9%	182	-45	48	-21	179	-96%	-32	(2.0%)
37 Montana	0.3%	0.2%	172	-51	68	-35	177	-95%	7	0.9%
38 Rhode Island	0.3%	0.3%	149	-111	164	-70	157	-89%	-25	(2.1%)
39 New Mexico	0.6%	0.5%	136	-68	112	-22	172	-93%	3	0.2%
40 Puerto Rico	1.0%	0.5%	133	-332	80	-77	143	-77%	-88	(4.5%)
41 New Hampshire	0.4%	0.4%	132	-76	106	-29	127	-87%	-14	(1.1%)
42 North Dakota	0.2%	0.3%	126	-23	93	-26	178	-96%	-2	(0.3%)
43 South Dakota	0.3%	0.3%	125	-104	76	-42	178	-96%	-37	(3.0%)
44 Arkansas	0.9%	0.6%	102	-72	23	-11	121	-97%	-23	(2.6%)
45 Delaware	0.3%	0.4%	89	-48	135	-65	122	-86%	-27	(2.4%)
46 District of Columbia	0.2%	0.7%	87	+4	56	-32	121	-89%	4	1.4%
47 Oklahoma	1.2%	1.0%	85	-84	63	+1	121	-95%	-28	(2.1%)
48 Vermont	0.2%	0.2%	65	+32	86	+1	39	-75%	-3	(0.7%)
49 Hawaii	0.4%	0.5%	62	-16	48	-14	255	-77%	-4	(0.7%)
50 Alaska	0.2%	0.3%	57	-27	131	-30	157	-88%	-21	(3.3%)
51 Wyoming	0.2%	0.2%	0	-77	81	-48	173	-95%	-5	(1.3%)
52 U.S. Virgin Islands	0.0%	0.0%	0	-14	112	-72	44	-74%	0	0.0%
53 Northern Mariana	0.0%	0.0%	0	+0	6	+6	196	-92%	0	0.0%
54 Kansas	0.9%	0.8%	0	+0	39	-19	167	-97%	27	2.1%
55 Guam	0.0%	0.0%	0	-15	40	-40	182	-96%	-1	(2.6%)
56 American Samoa	0.0%	0.0%	0	+0	0	+0	0	0%	0	

#5: USA COVID-19 Heat Map...

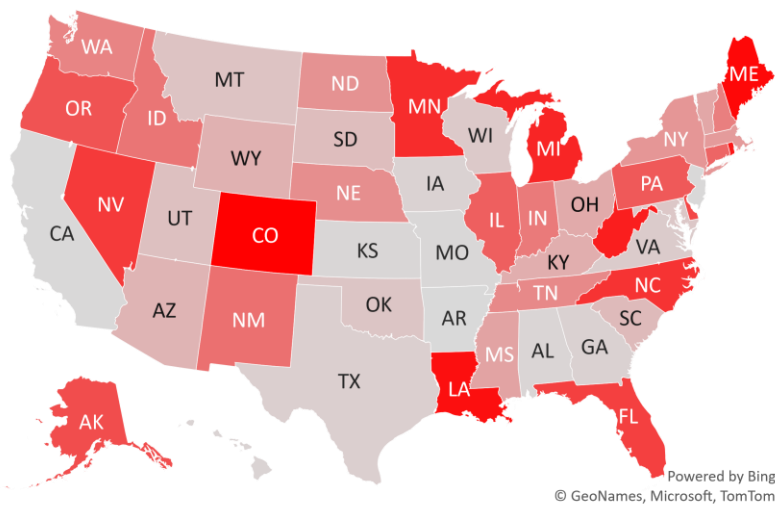
Daily Case Increases



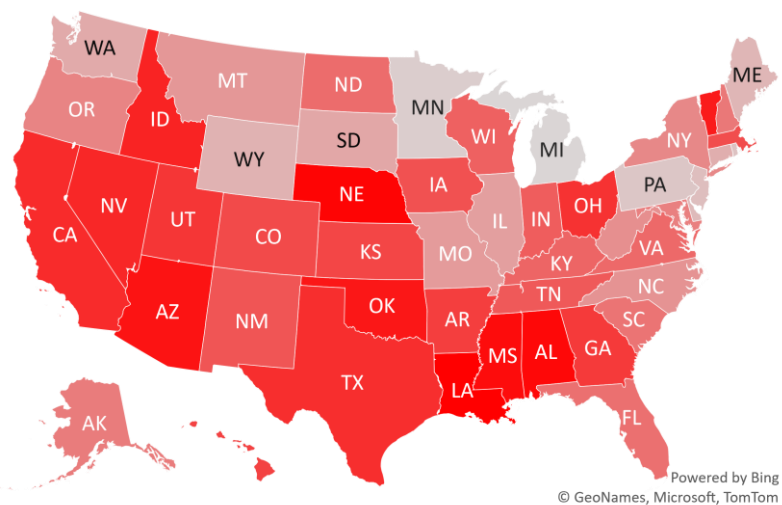
7D Delta in Daily New Cases



Daily Case Increases per 1mm Resident (3D Avg)



7D Delta in Daily Case Increases per 1mm Resident (3D Avg)

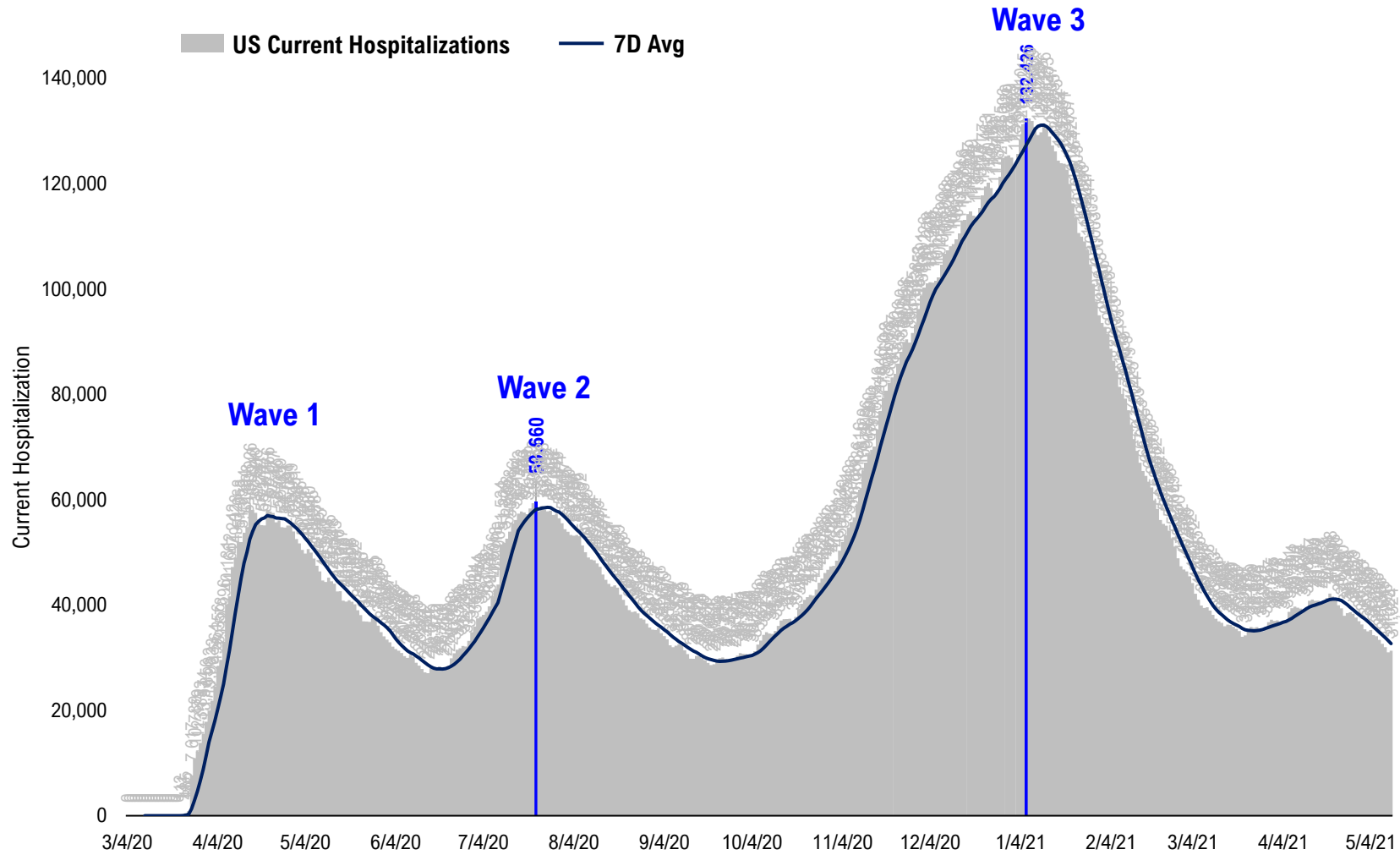


#7: US New Cases by States... (sorted by today's new cases)

	Sorted						Sorted				
	7D Ago	Last 3-day Trend					7D Ago	Last 3-day Trend			
	5/4/21	5/9/21	5/10/21	5/11/21	vs 7D ago		5/4/21	5/9/21	5/10/21	5/11/21	vs 7D ago
United States	39,256	22,832	32,404	31,752	-7,504	United States	39,256	22,832	32,404	31,752	-7,504
States:						States:					
Florida	3,682	3,231	2,296	3,263		South Carolina	427	521	415	287	
Texas	3,217	1,079	651	2,859		Mississippi	208	0	509	267	<--higher
Pennsylvania	3,133	1,376	1,023	2,385		West Virginia	344	405	211	258	
Michigan	2,527	0	2,716	1,992		Missouri	312	260	178	258	
Illinois	2,211	1,741	1,424	1,562		Maine	417	244	214	238	
New York	2,173	2,269	1,580	1,516		Idaho	209	81	259	233	
Ohio	1,285	794	713	1,411		Utah	259	232	207	224	
Colorado	1,519	927	881	1,284		Iowa	227	125	149	182	
California	1,349	1,853	1,377	1,045		Montana	223	35	11	172	
Washington	1,206	0	1,521	830		Rhode Island	260	0	371	149	
Kentucky	772	195	155	757		New Mexico	204	0	568	136	
Georgia	690	505	349	720		Puerto Rico	465	349	288	133	
North Carolina	981	0	3,753	699		New Hampshire	208	123	177	132	
Arizona	701	448	642	683		North Dakota	149	43	44	126	
Indiana	771	905	590	663		South Dakota	229	0	77	125	
Oregon	734	601	369	642		Arkansas	174	72	38	102	
Louisiana	983	554	1,100	634		Delaware	137	200	104	89	
Virginia	771	539	336	600		District of Columbia	83	16	15	87	
Minnesota	995	803	1,190	575		Oklahoma	169	0	667	85	
Tennessee	542	0	1,519	558		Vermont	33	41	55	65	<--higher
Massachusetts	854	858	474	555		Hawaii	78	81	60	62	
New Jersey	784	253	75	536		Alaska	84	0	230	57	
Wisconsin	721	308	205	517		Wyoming	77	0	141	0	
Nevada	476	0	800	470		U.S. Virgin Islands	14	0	36	0	
Nebraska	256	87	66	411	<--higher	Northern Mariana Islands	0	0	1	0	
Connecticut	417	0	827	409		Kansas	0	0	345	0	
Maryland	501	434	276	399		Guam	15	0	20	0	
Alabama	0	244	106	310		American Samoa	0	0	0	0	

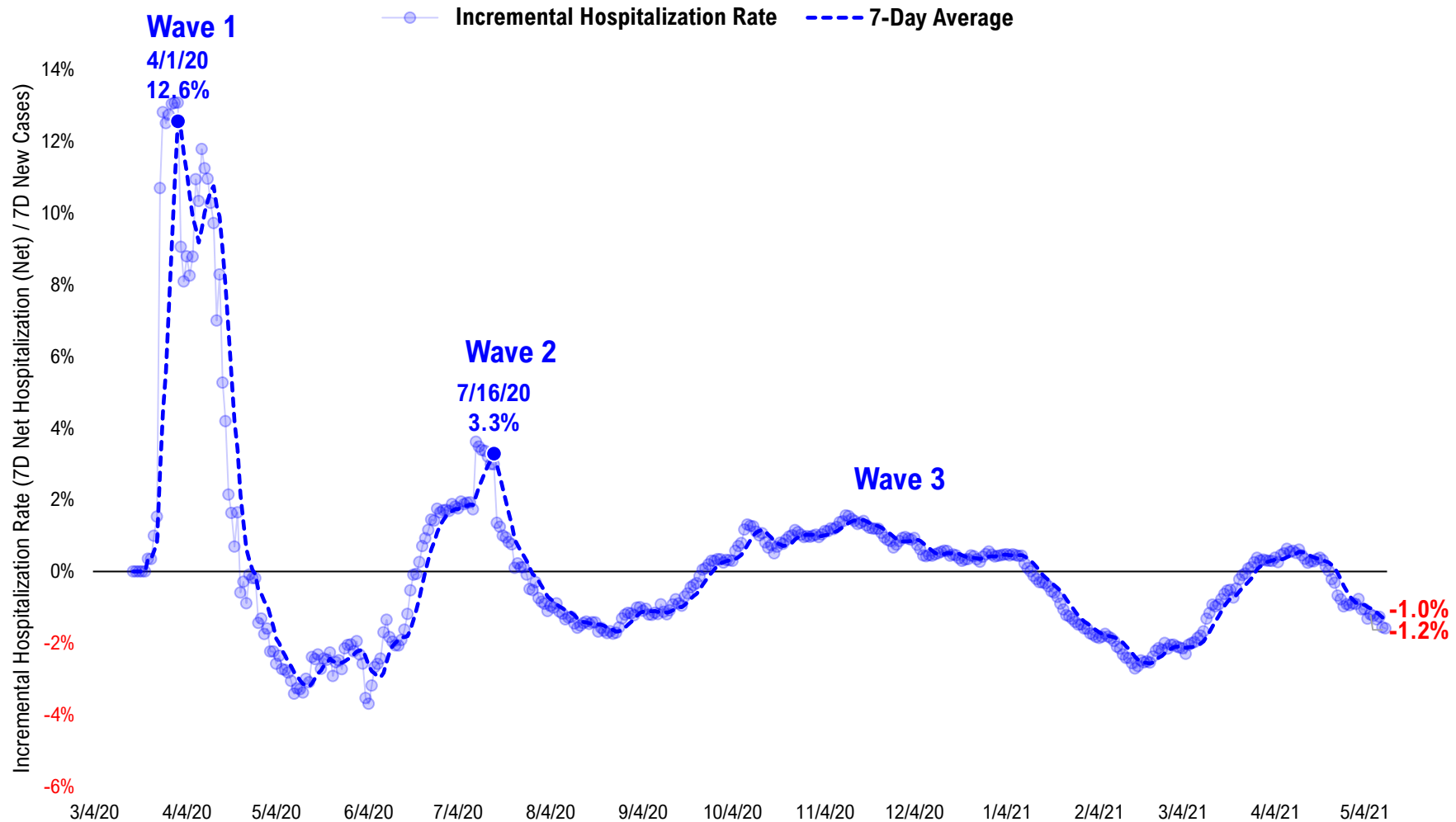
#8: US Daily Hospitalizations...

US Net Hospitalizations (aggregate of 50 states + Washington, D.C.)



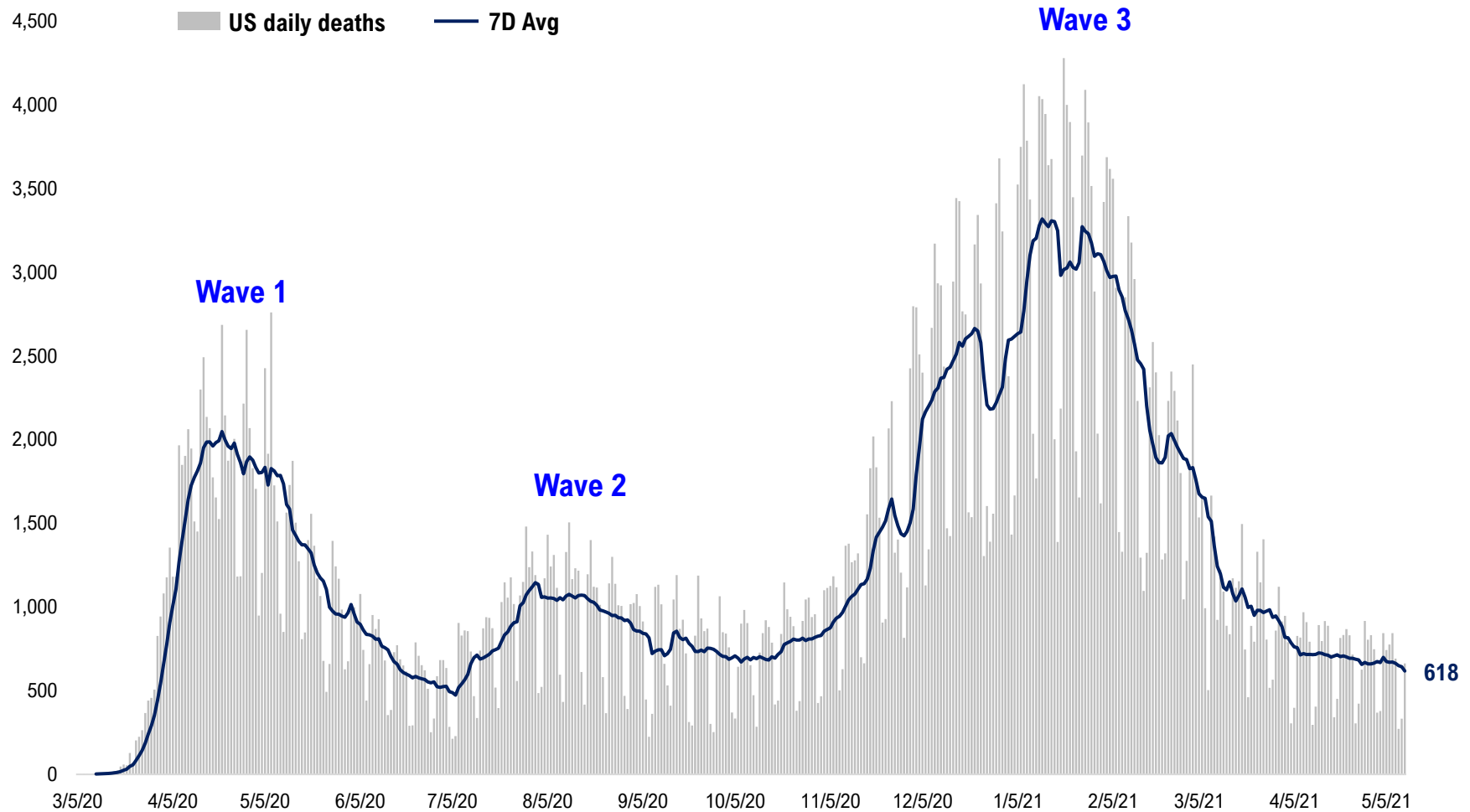
#9: Incremental Hospitalization Rate...

**Incremental Hospitalization Rate: 7D Net Hospitalizations / 7D Total New Cases
(aggregate of 50 states + Washington, D.C.)**

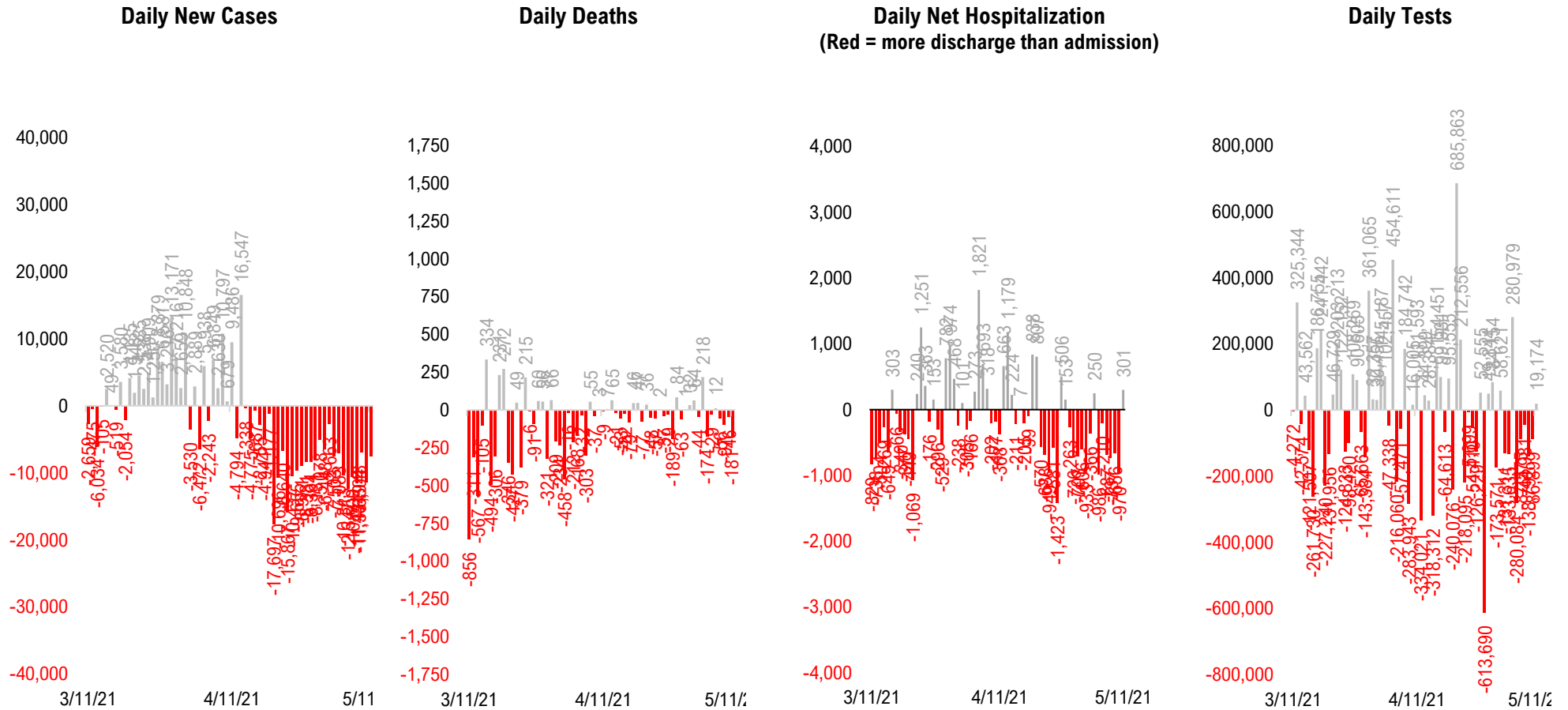


#10: US Daily New Fatalities...

US daily COVID-19 Fatalities



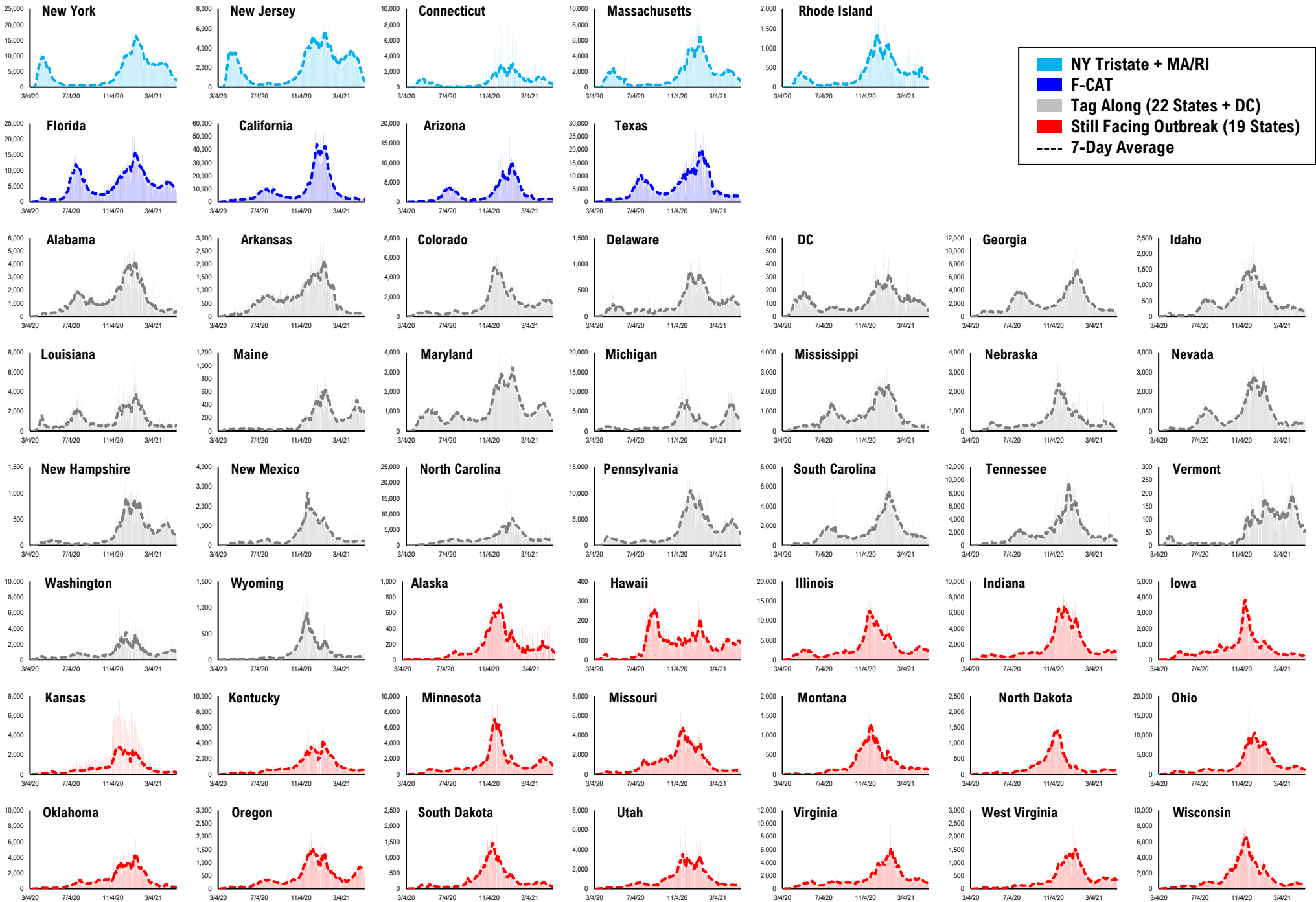
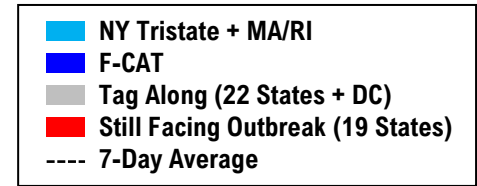
#11: Rolling 7-Day Change in the Key Metrics... (Past 8 Weeks)



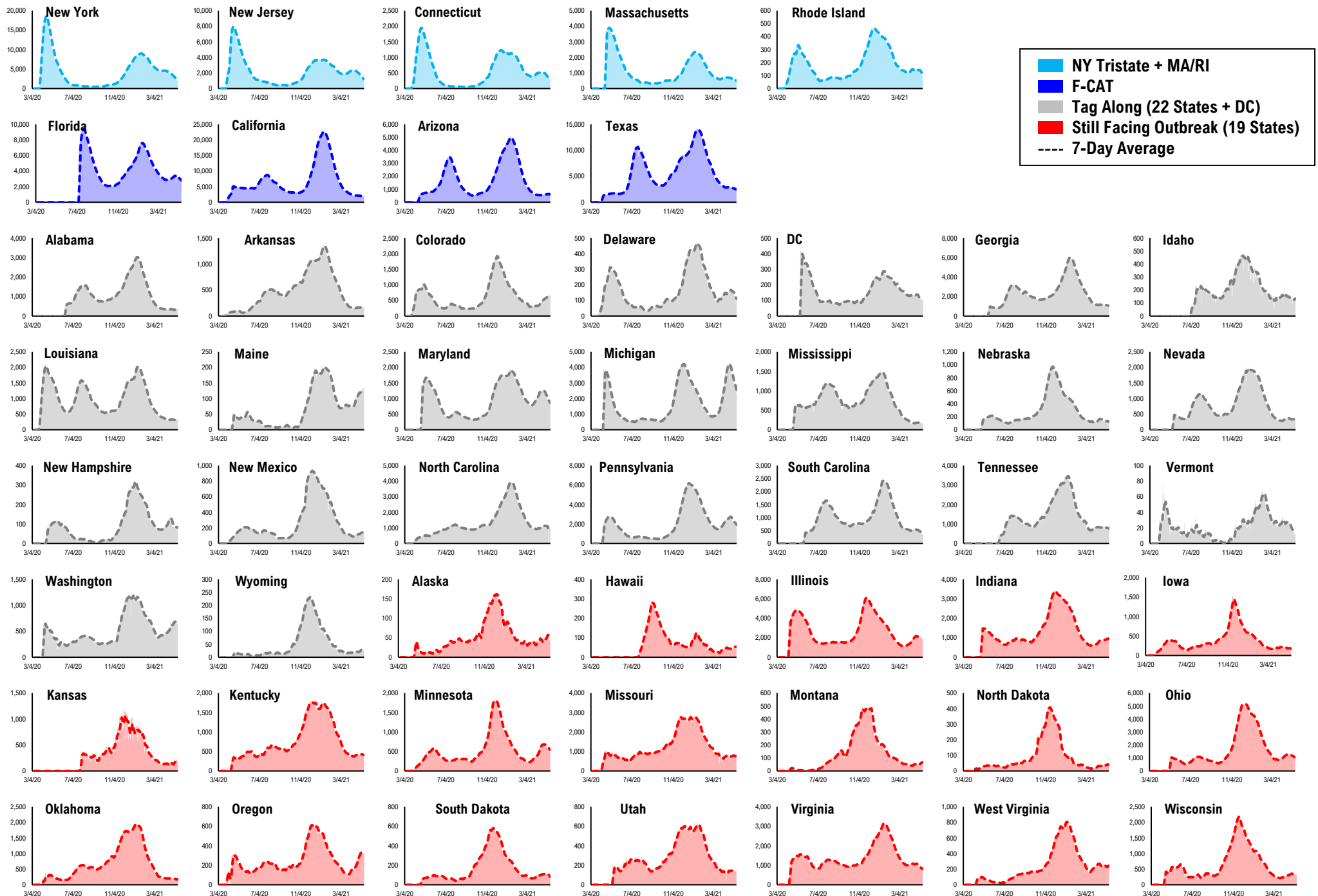
* Ignored California between 8/10 and 8/23, due to its data glitch caused 300,000-case backlog

Source: Fundstrat, COVID-19 Tracking Project, State Department of Health

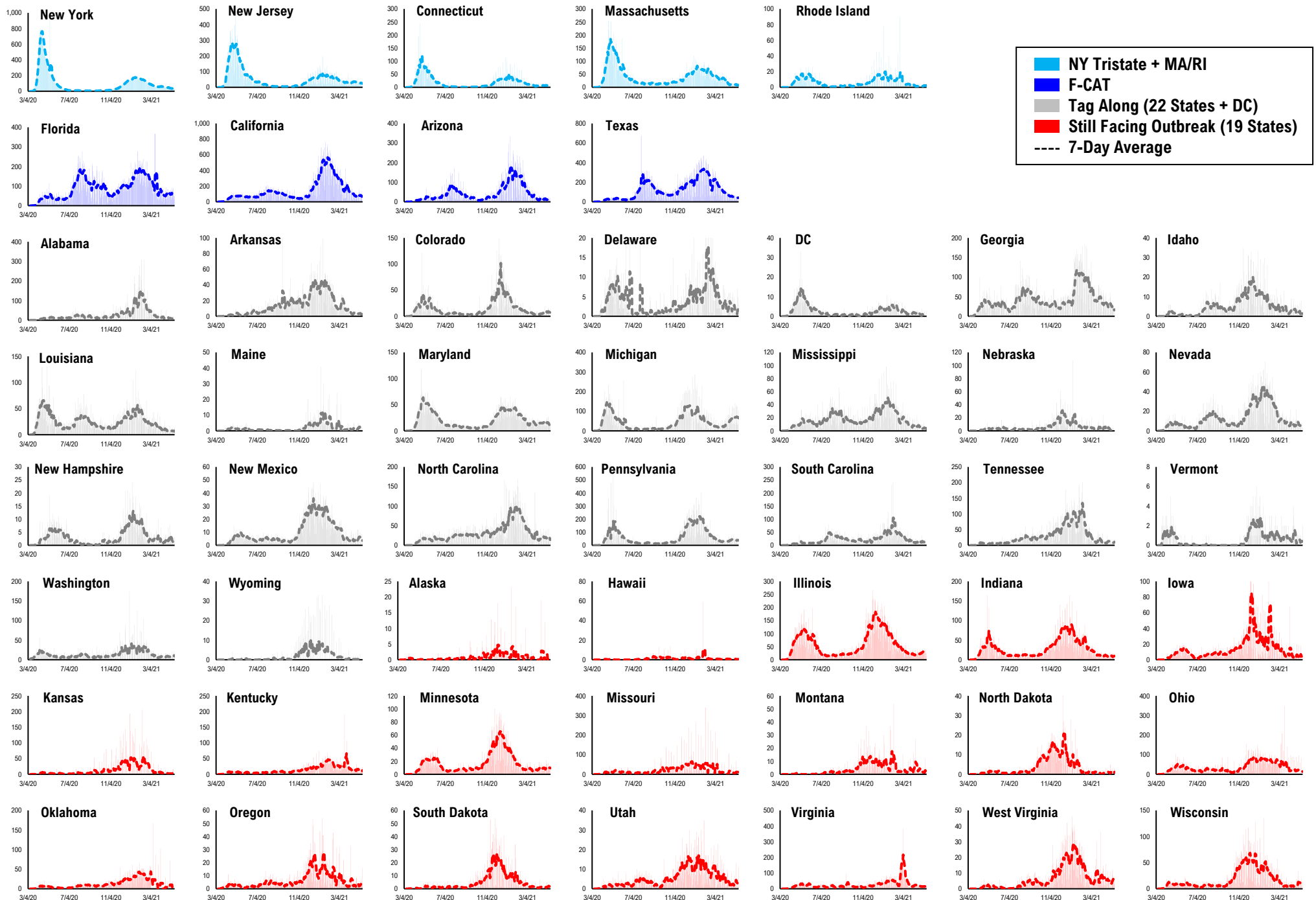
#12: Daily New Cases by States...



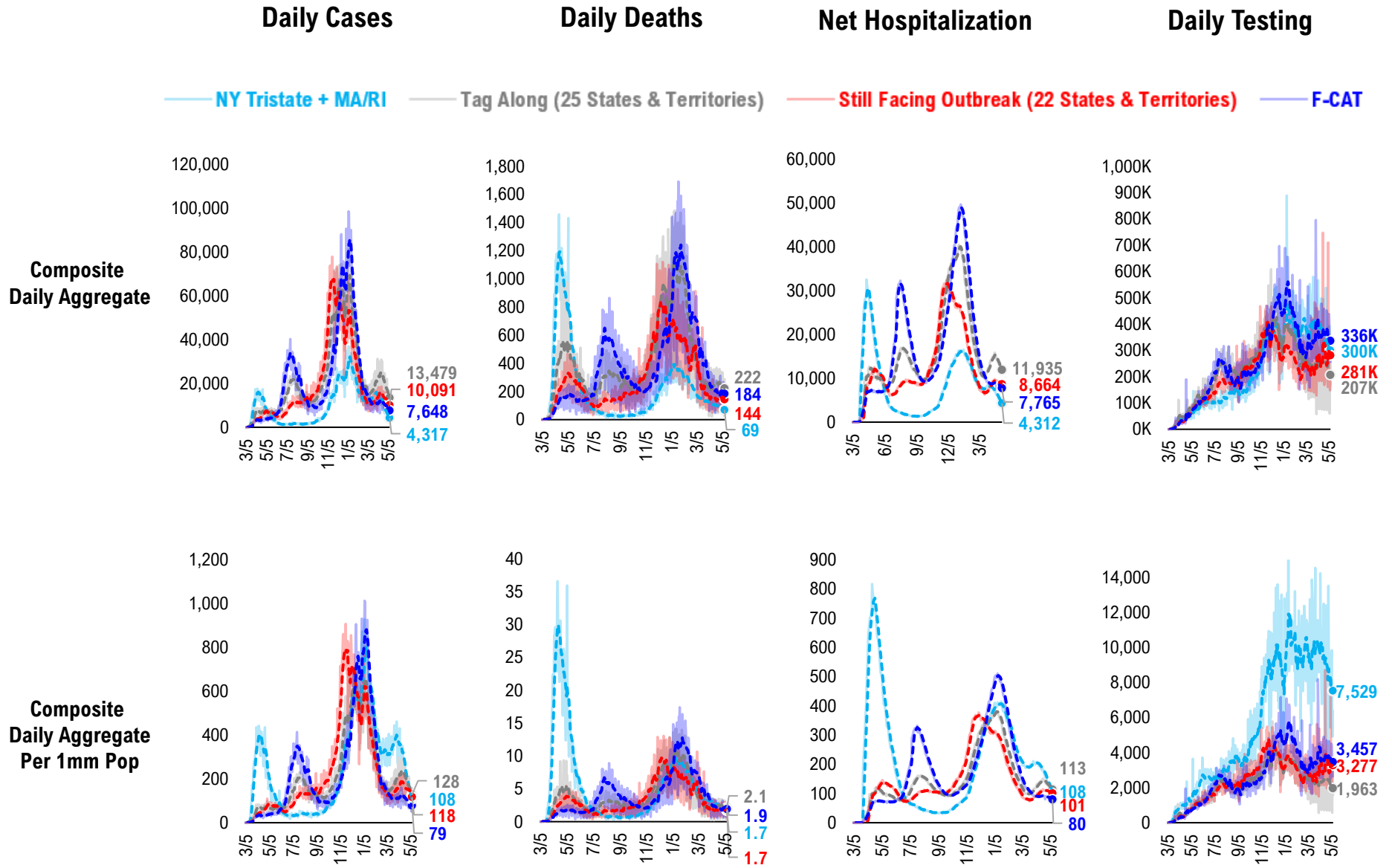
#13: Current Hospitalizations by States...



#14: Daily New Deaths by States...

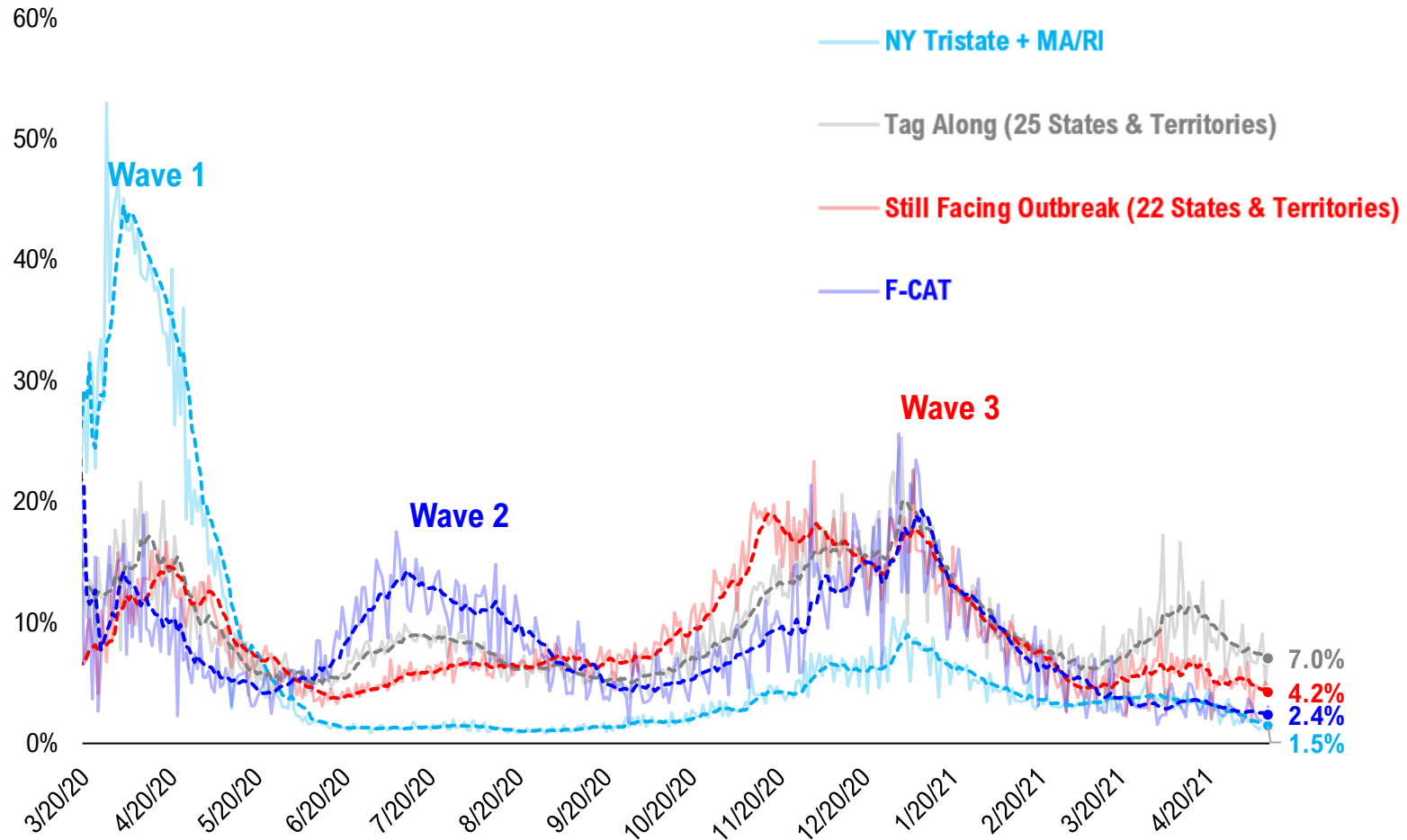


#15: State COVID-19 situation by Tier...

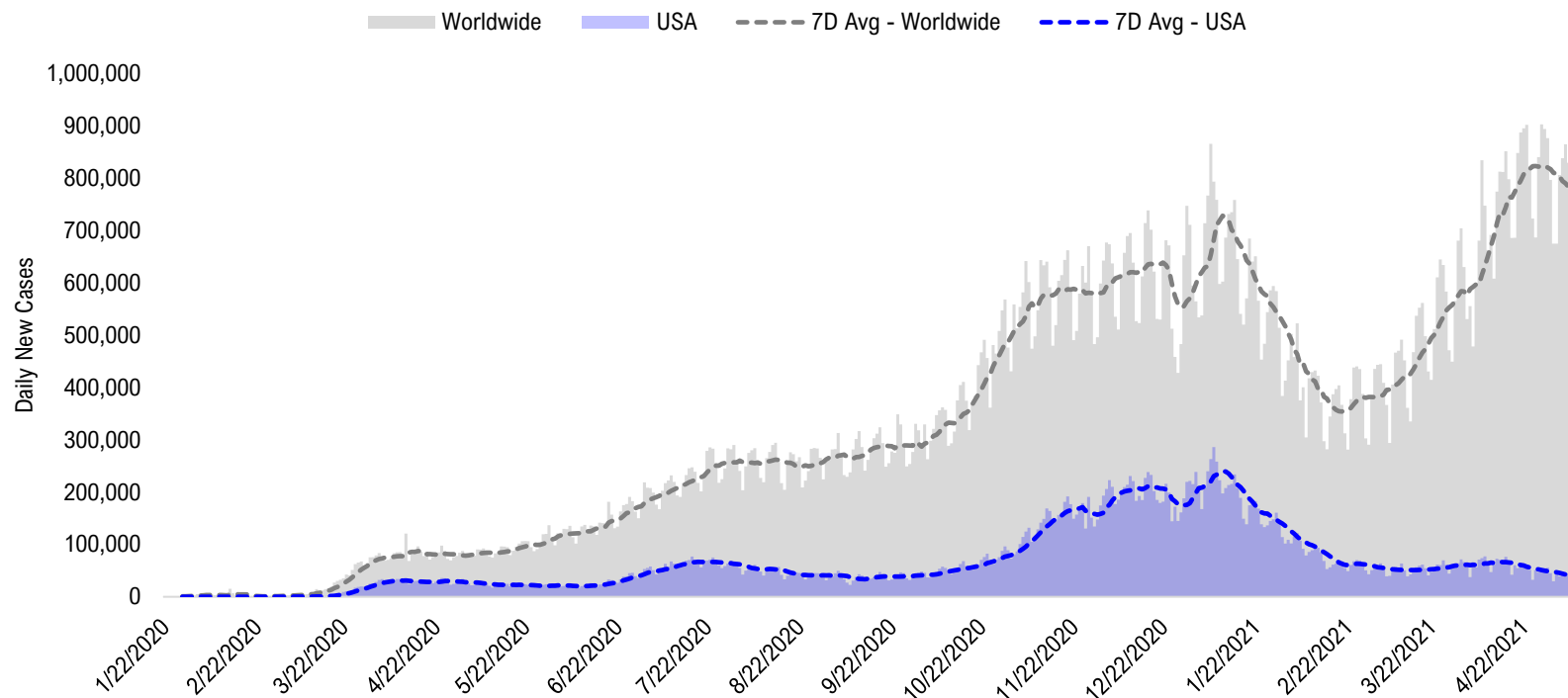


#16: State COVID-19 Daily Positivity Rate by Tier...

Composite Daily Positivity Rate



#17: Global COVID-19 Situation at a Glance...



Dec 25	Jan 8	Jan 22	Feb 5	Feb 19	Mar 5	Mar 19	Apr 2	Apr 16	Apr 30	May 10
Europe 235,134	Europe 253,225	Europe 215,947	Europe 171,879	Europe 136,398	Europe 159,160	Europe 203,932	Europe 246,319	Europe 246,699	Pakistan + India + Bangladesh 372,774	Pakistan + India + Bangladesh 392,580
US + Canada 192,649	US + Canada 239,474	US + Canada 180,145	US + Canada 118,696	Latin America 81,995	Latin America 92,112	Latin America 112,156	Latin America 123,113	Pakistan + India + Bangladesh 199,008	Europe 175,023	Latin America 126,742
Latin America 83,594	Latin America 95,501	Latin America 116,888	Latin America 95,150	US + Canada 68,407	US + Canada 58,634	US + Canada 54,412	Pakistan + India + Bangladesh 78,982	Latin America 137,880	Latin America 131,375	Europe 125,564
Pakistan + India + Bangladesh 26,900	Africa 28,432	Asia ex- India+Pakistan 26,862	Asia ex- India+Pakistan 24,436	Asia ex- India+Pakistan 17,226	Pakistan + India + Bangladesh 17,965	Pakistan + India + Bangladesh 36,253	US + Canada 65,960	US + Canada 74,694	US + Canada 56,931	US + Canada 43,847
Africa 22,109	Pakistan + India + Bangladesh 21,150	Africa 25,790	Africa 15,433	Pakistan + India + Bangladesh 13,652	Asia ex- India+Pakistan 13,961	Asia ex- India+Pakistan 16,169	Asia ex- India+Pakistan 22,160	Asia ex- India+Pakistan 28,291	Asia ex- India+Pakistan 35,374	Asia ex- India+Pakistan 39,831
Asia ex- India+Pakistan 18,034	Asia ex- India+Pakistan 20,638	Pakistan + India + Bangladesh 16,471	Pakistan + India + Bangladesh 13,449	Africa 11,086	Africa 9,369	Africa 10,204	Africa 12,282	Africa 11,157	Africa 10,090	Africa 8,877

Disclosures

This research is for the clients of FS Insight only. For important disclosures and rating histories regarding sectors or companies that are the subject of this report, please contact your sales representative or FS Insight at 150 East 52nd Street, New York, NY, 10022 USA.

Analyst Certification (Reg AC)

Thomas J. Lee, the research analyst denoted by an “AC” on the cover of this report, hereby certifies that all of the views expressed in this report accurately reflect his personal views, which have not been influenced by considerations of the firm’s business or client relationships.

Neither I, nor a member of my household is an officer, director, or advisory board member of the issuer(s) or has another significant affiliation with the issuer(s) that is/are the subject of this research report. There is a possibility that we will from time to time have long or short positions in, and buy or sell, the securities or derivatives, if any, referred to in this research

Conflicts of Interest

This research contains the views, opinions and recommendations of FS Insight . As of the time of writing and publication of this presentation, FS Insight does not know of, or have reason to know of any material conflicts of interest at the time of the publication of this presentation. The Company has no contractual relationship, nor have we received any compensation from any of the companies listed in this research report.

Analyst Industry/Sector Views

Positive (+): The analyst expects the performance of his industry/sector coverage universe over the next 6-18 months to be attractive vs. the relevant broad market benchmark, being the S&P 500 for North America.

Neutral (N): The analyst expects the performance of his or her industry/sector coverage universe over the next 6-18 months to be in line with the relevant broad market benchmark, being the S&P 500 for North America.

Negative (-): The analyst expects his or her industry coverage universe over the next 6-18 months to underperform vs. the relevant broad market benchmark, being the S&P 500 for North America.

General Disclosures

FS Insight is an independent research company and is not a registered investment advisor and is not acting as a broker dealer under any federal or state securities laws. FS Insight is a member of IRC Securities’ Research Prime Services Platform. IRC Securities is a FINRA registered broker-dealer that is focused on supporting the independent research industry. Certain personnel of FS Insight (i.e. Research Analysts) are registered representatives of IRC Securities, a FINRA member firm registered as a broker-dealer with the Securities and Exchange Commission and certain state securities regulators. As registered representatives and independent contractors of IRC Securities, such personnel may receive commissions paid to or shared with IRC Securities for transactions placed by FS Insight clients directly with IRC Securities or with securities firms that may share commissions with IRC Securities in accordance with applicable SEC and FINRA requirements. IRC Securities does not distribute the research of FS Insight , which is available to select institutional clients that have engaged FS Insight .

As registered representatives of IRC Securities our analysts must follow IRC Securities’ Written Supervisory Procedures. Notable compliance policies include (1) prohibition of insider trading or the facilitation thereof, (2) maintaining client confidentiality, (3) archival of electronic communications, and (4) appropriate use of electronic communications, amongst other compliance related policies.

FS Insight does not have the same conflicts that traditional sell-side research organizations have because FS Insight (1) does not conduct any investment banking activities, (2) does not manage any investment funds, and (3) our clients are only institutional investors.

This research is for the clients of FS Insight only. Additional information is available upon request. Information has been obtained from sources believed to be reliable but FS Insight does not warrant its completeness or accuracy except with respect to any disclosures relative to FS Insight and the analyst’s involvement (if any) with any of the subject companies of the research. All pricing is as of the market close for the securities discussed, unless otherwise stated. Opinions and estimates constitute our judgment as of the date of this material and are subject to change without notice. Past performance is not indicative of future results. This material is not intended as an offer or solicitation for the purchase or sale of any financial instrument. The opinions and recommendations herein do not take into account individual client circumstances, risk tolerance, objectives, or needs and are not intended as recommendations of particular securities, financial instruments or strategies. The recipient of this report must make its own independent decision regarding any securities or financial instruments mentioned herein. Except in circumstances where FS Insight expressly agrees otherwise in writing, FS Insight is not acting as a municipal advisor and the opinions or views contained herein are not intended to be, and do not constitute, advice, including within the meaning of Section 15B of the Securities Exchange Act of 1934. All research reports are disseminated and available to all clients simultaneously through electronic publication to our internal client website, FS Insight .com. Not all research content is redistributed to our clients or made available to third-party aggregators or the media. Please contact your sales representative if you would like to receive any of our research publications.

Copyright 2021 FS Insight LLC. All rights reserved. No part of this material may be reprinted, sold or redistributed without the prior written consent of FS Insight LLC.