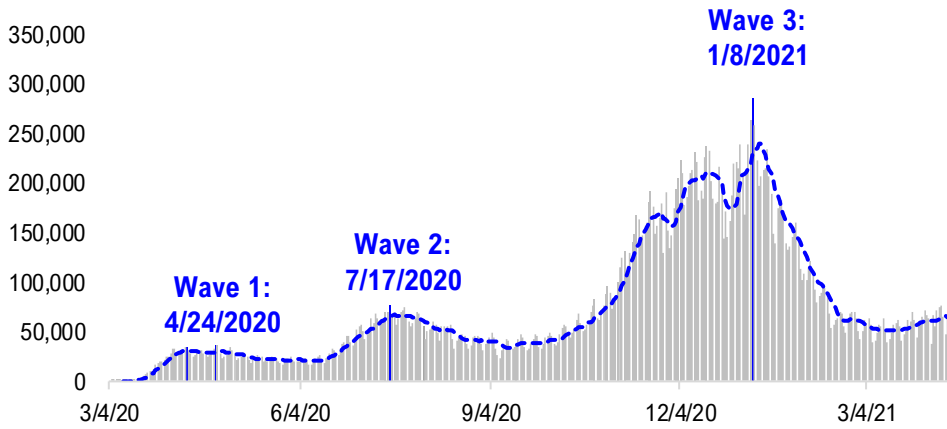


# FSInsight Daily COVID-19 Chartbook

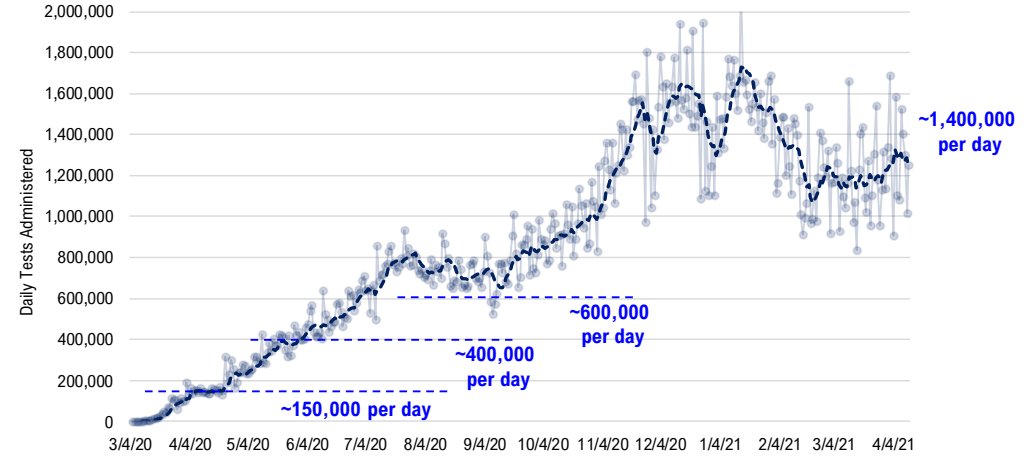


# #1: USA COVID-19 Situation at a Glance...

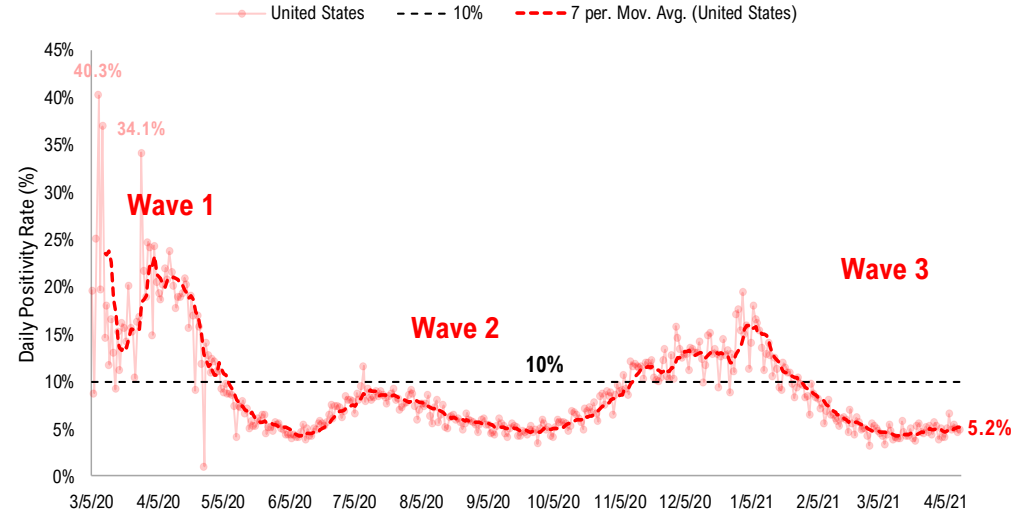
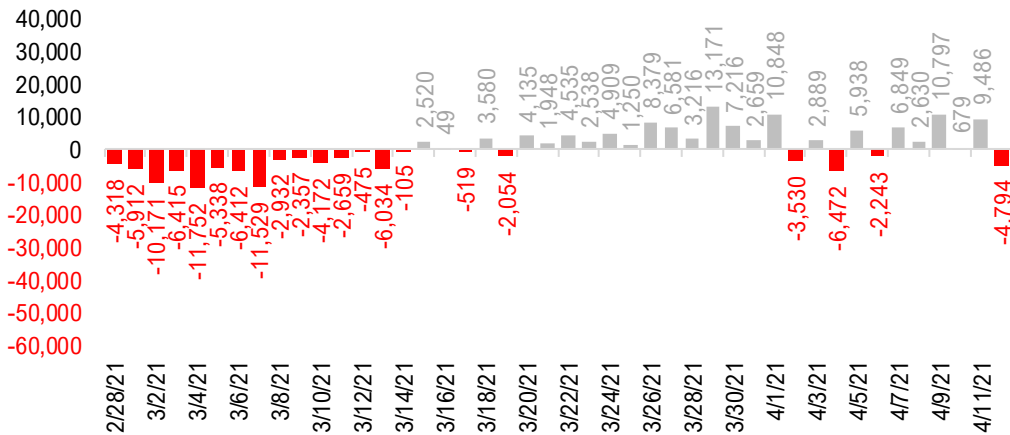
**US daily new cases**



**USA total COVID-19 tests administered**

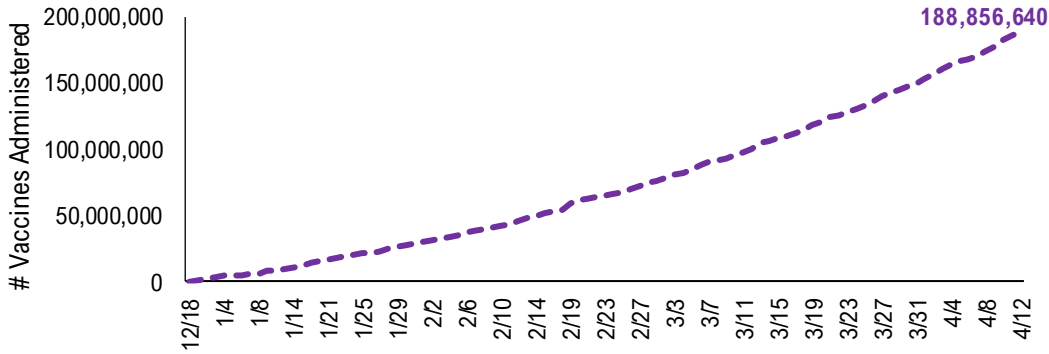


**US daily new cases rolling 7D delta**

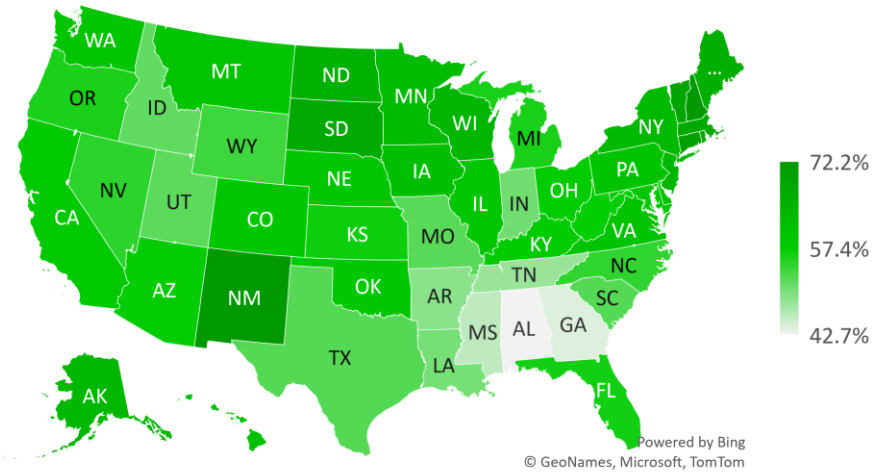


# #2: USA COVID-19 Vaccination Progress at a Glance...

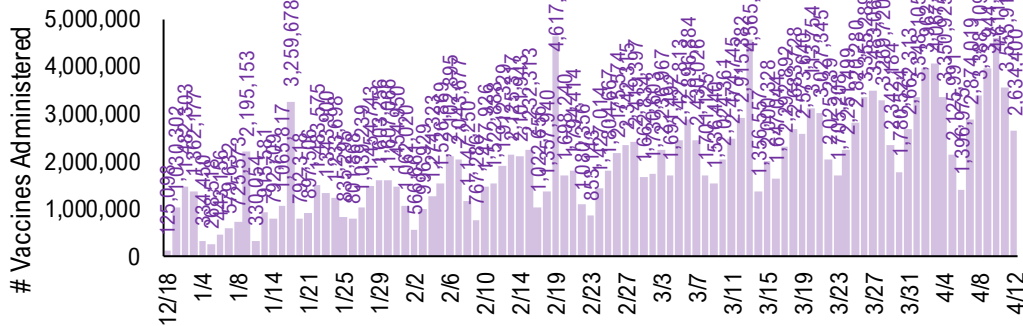
### Cumulative Vaccines Administered



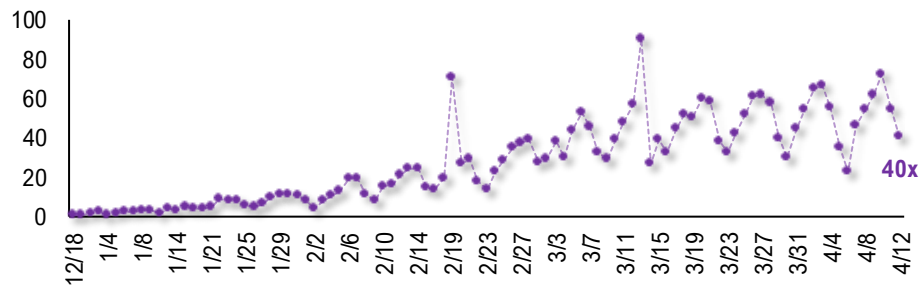
### Cumulative Vaccines Administered as % State Population



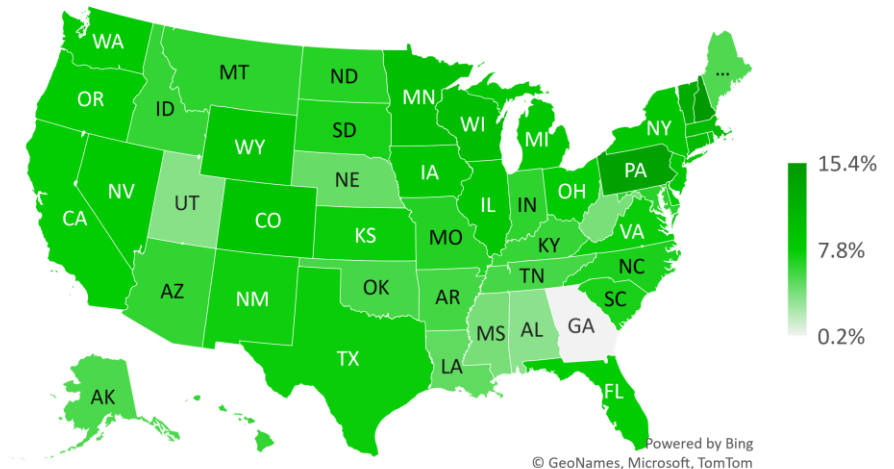
### Daily Vaccines Administered



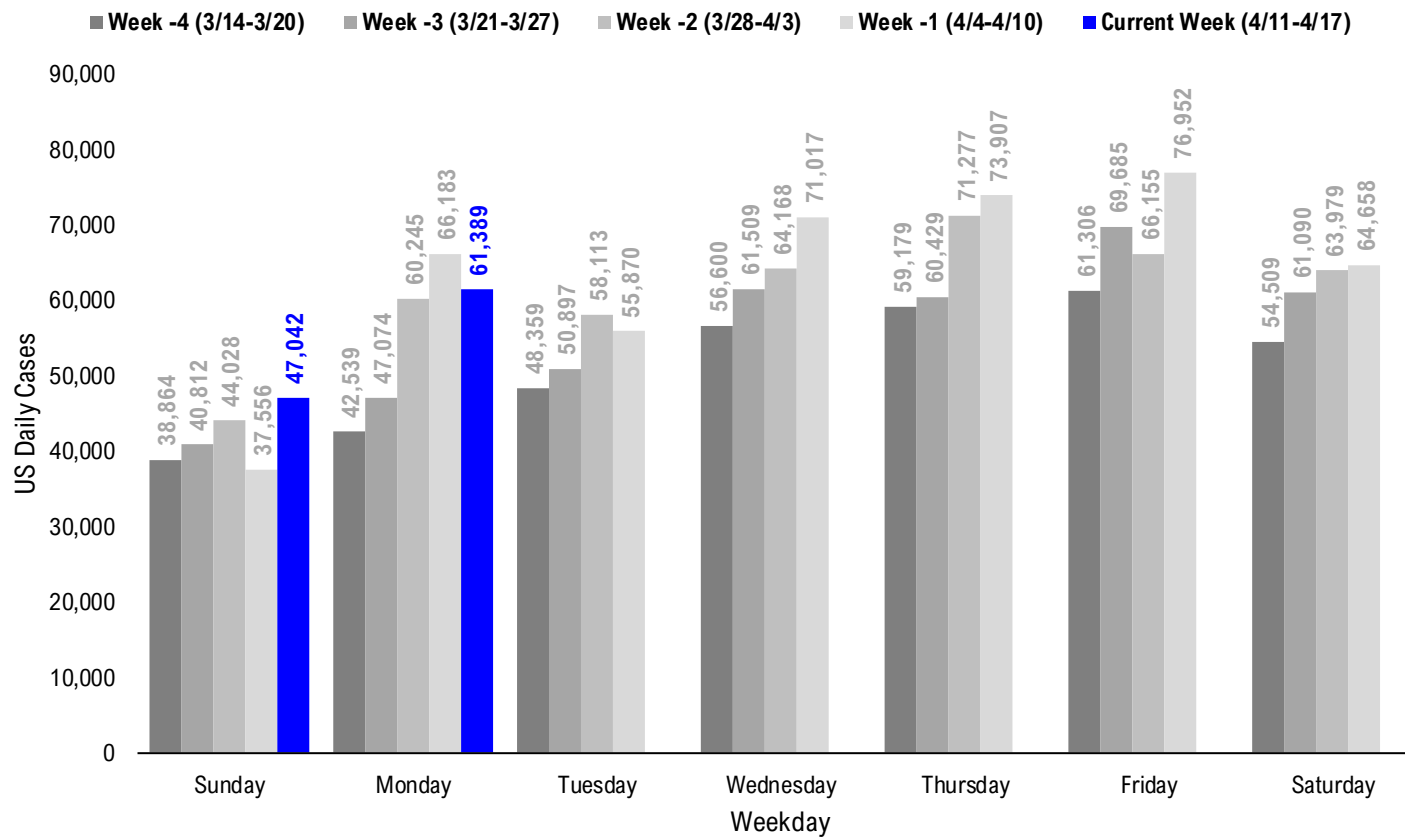
### Daily Vaccinations / Daily Cases (7D Avg)



### Implied Weekly Vaccines Administered as % State Population



# #3: USA COVID-19 Daily Cases Weekday Seasonality (Past 4 Weeks) ...



# #4: USA State COVID-19 Situation at a Glance...

	Sorted Daily Cases		Daily Cases (3D avg) per 1mm residents				Since Peak		Hospitalization	
	% US Pop	% US GDP	4/12	7D Delta	4/12	7D Delta	# Days	% Decline in Daily Cases	7D Net Hospitalization	7D Net Hospitalization / 7D New Cases
	United States	100%	100%	61.389	-4.794	176	+5	93	-79%	2.643

	Sorted Daily Cases		Daily Cases (3D avg) per 1mm residents				Since Peak		Hospitalization	
	% US Pop	% US GDP	4/12	7D Delta	4/12	7D Delta	# Days	% Decline in Daily Cases	7D Net Hospitalization	7D Net Hospitalization / 7D New Cases
	United States	100%	100%	61.389	-4.794	176	+5	93	-79%	2.643

**States:**

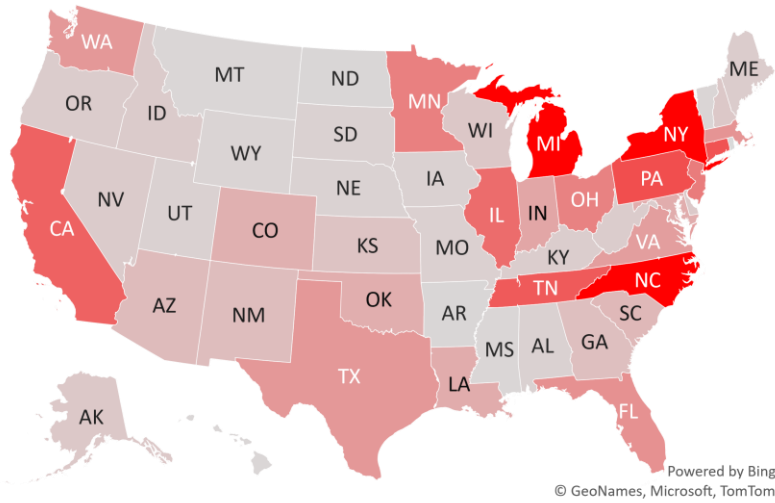
1 Michigan	3.0%	2.6%	9,674	-619	553	-71	145	-36%	1,352	3.0%
2 North Carolina	3.2%	2.7%	5,655	-746	180	-24	93	-82%	-3	(0.0%)
3 New York	5.9%	8.1%	4,926	-1,657	325	-50	93	-64%	-316	(0.6%)
4 Pennsylvania	3.9%	3.8%	3,088	+370	295	-17	128	-69%	227	0.8%
5 Connecticut	1.1%	1.3%	2,985	+286	279	+27	89	-80%	40	0.5%
6 Tennessee	2.1%	1.8%	2,829	-579	138	-28	115	-91%	-8	(0.1%)
7 California	11.9%	14.6%	2,649	+537	102	+23	92	-92%	-273	(1.3%)
8 Illinois	3.8%	4.2%	2,433	+331	237	+42	150	-78%	417	1.8%
9 New Jersey	2.7%	3.0%	2,062	-395	295	-62	93	-57%	-31	(0.1%)
10 Minnesota	1.7%	1.8%	1,993	+610	368	+164	133	-74%	203	1.2%
11 Ohio	3.5%	3.3%	1,934	-984	166	+18	123	-83%	220	1.5%
12 Florida	6.5%	5.0%	1,613	-1,867	218	-4	94	-75%	196	0.5%
13 Massachusetts	2.1%	2.8%	1,532	-1,456	282	+18	93	-75%	-8	(0.1%)
14 Washington	2.3%	2.7%	1,451	+63	117	+10	138	-79%	67	1.0%
15 Texas	8.7%	8.8%	1,444	+607	56	+15	95	-93%	51	0.3%
16 Virginia	2.6%	2.6%	1,310	+287	165	+16	84	-82%	18	0.2%
17 Indiana	2.0%	1.8%	1,131	+416	181	+46	128	-85%	205	2.5%
18 Louisiana	1.4%	1.3%	999	-260	72	-19	95	-94%	16	0.5%
19 Maryland	1.8%	2.0%	985	+126	223	+14	92	-62%	68	0.7%
20 Oklahoma	1.2%	1.0%	968	+95	82	+8	92	-94%	-13	(0.3%)
21 Colorado	1.7%	1.8%	912	+45	208	-3	142	-80%	105	1.0%
22 Puerto Rico	1.0%	0.5%	756	+450	254	+108	114	-28%	103	2.9%
23 South Carolina	1.6%	1.1%	736	-459	173	+15	92	-87%	-6	(0.1%)
24 Arizona	2.2%	1.7%	675	+67	93	+12	99	-94%	36	0.7%
25 New Mexico	0.6%	0.5%	619	+176	98	+28	143	-94%	16	1.1%
26 Georgia	3.2%	2.9%	583	+82	73	+13	92	-91%	23	0.4%
27 Kansas	0.9%	0.8%	483	+129	55	+15	138	-96%	-54	(3.6%)
28 Wisconsin	1.8%	1.6%	402	+95	102	+10	150	-92%	58	1.0%

**States:**

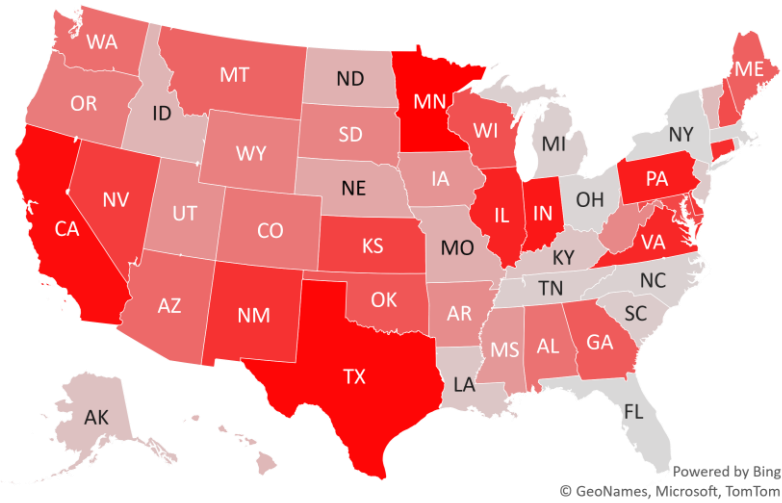
29 Alaska	0.2%	0.3%	386	-97	176	-44	128	-84%	9	0.8%
30 New Hampshire	0.4%	0.4%	375	+96	307	+33	98	-62%	34	1.1%
31 Delaware	0.3%	0.4%	355	+154	391	+53	93	-58%	-25	(1.1%)
32 Nevada	0.9%	0.8%	319	+138	151	+53	93	-84%	21	0.7%
33 Idaho	0.5%	0.4%	317	-20	100	-22	123	-91%	-119	(5.4%)
34 Maine	0.4%	0.3%	296	+73	204	+6	87	-67%	16	0.7%
35 West Virginia	0.5%	0.4%	293	+16	216	+15	99	-80%	12	0.4%
36 Oregon	1.3%	1.2%	282	+36	119	+31	127	-71%	0	0.0%
37 Kentucky	1.3%	1.0%	267	-138	84	+11	94	-93%	27	0.7%
38 Missouri	1.8%	1.5%	198	-8	49	+5	149	-94%	-153	(5.9%)
39 South Dakota	0.3%	0.3%	187	+31	160	+35	149	-92%	8	0.6%
40 Utah	1.0%	0.9%	185	+12	97	-3	94	-92%	1	0.0%
41 Iowa	1.0%	0.9%	179	+1	95	+1	150	-93%	19	0.7%
42 Alabama	1.5%	1.1%	172	+63	57	+13	95	-94%	8	0.4%
43 Nebraska	0.6%	0.6%	144	-2	134	+10	144	-91%	36	1.5%
44 Wyoming	0.2%	0.2%	115	+33	66	+19	144	-96%	2	0.4%
45 Vermont	0.2%	0.2%	89	-29	254	-19	10	-26%	6	0.6%
46 District of Columbi	0.2%	0.7%	73	-2	127	-17	92	-74%	2	0.3%
47 Montana	0.3%	0.2%	70	+70	87	-3	148	-93%	7	0.6%
48 Mississippi	0.9%	0.6%	70	+0	48	-4	93	-95%	0	0.0%
49 Hawaii	0.4%	0.5%	70	-23	65	-6	226	-69%	5	0.8%
50 North Dakota	0.2%	0.3%	63	-13	140	+29	149	-94%	6	0.5%
51 Arkansas	0.9%	0.6%	57	+15	28	-1	92	-96%	11	1.5%
52 U.S. Virgin Islands	0.0%	0.0%	0	-32	0	-100	15	-100%	0	0.0%
53 Rhode Island	0.3%	0.3%	0	-918	0	-289	128	-100%	1	0.1%
54 Northern Mariana	0.0%	0.0%	0	+0	0	+0	167	-100%	0	0.0%
55 Guam	0.0%	0.0%	0	+0	0	+0	153	-100%	0	0.0%
56 American Samoa	0.0%	0.0%	0	+0	0	+0	0	0%	0	0.0%

# #5: USA COVID-19 Heat Map...

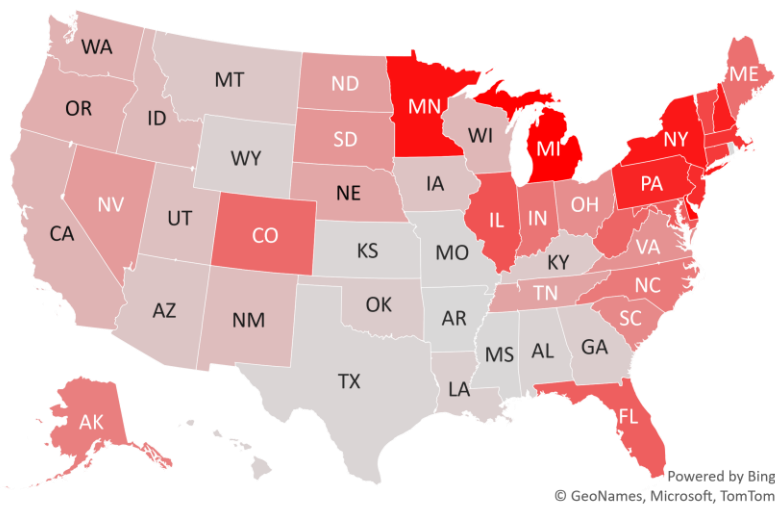
### Daily Case Increases



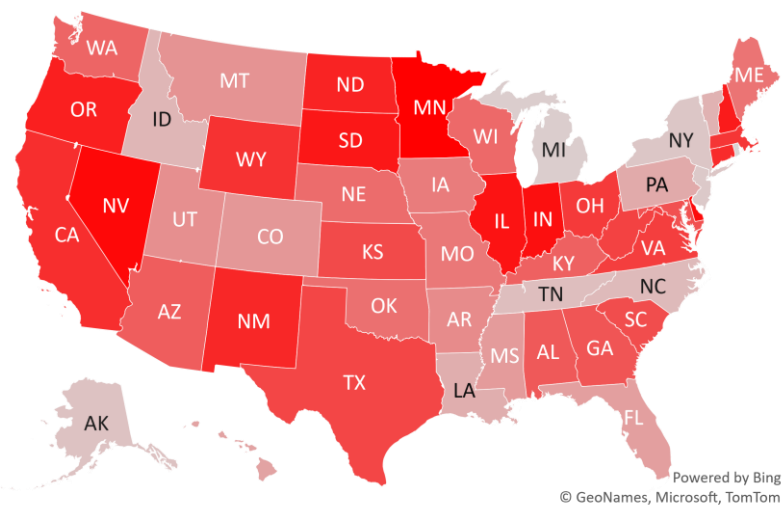
### 7D Delta in Daily New Cases



### Daily Case Increases per 1mm Resident (3D Avg)



### 7D Delta in Daily Case Increases per 1mm Resident (3D Avg)



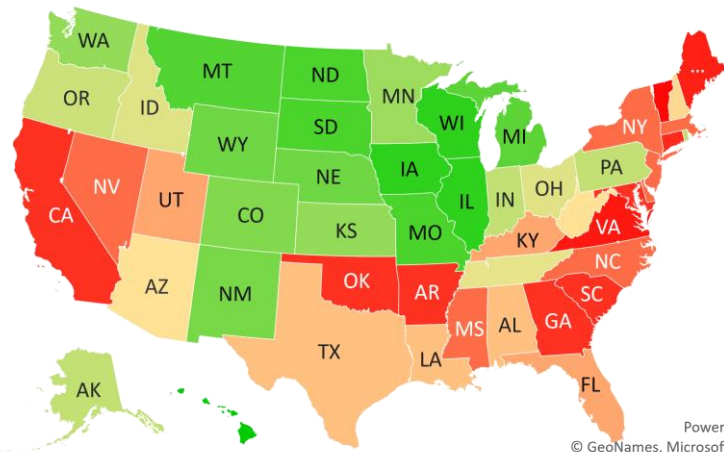
# #6: # of Days since Daily Case Peaked by States...

## # Days since Daily Cases (3D Avg) Peak (as of 4/12)

	<i>Sorted</i>			
	Peak Date	4/12/21	% off the Peak	% US Pop
United States	1/9/21	93	-79%	100%
<b>States:</b>				
Hawaii	8/29/20	226	-69%	0.4%
Northern Mariana Island	10/27/20	167	-100%	0.0%
Guam	11/10/20	153	-100%	0.0%
Wisconsin	11/13/20	150	-92%	1.8%
Illinois	11/13/20	150	-78%	3.8%
Iowa	11/13/20	150	-93%	1.0%
South Dakota	11/14/20	149	-92%	0.3%
North Dakota	11/14/20	149	-94%	0.2%
Missouri	11/14/20	149	-94%	1.8%
Montana	11/15/20	148	-93%	0.3%
Michigan	11/18/20	145	-36%	3.0%
Wyoming	11/19/20	144	-96%	0.2%
Nebraska	11/19/20	144	-91%	0.6%
New Mexico	11/20/20	143	-94%	0.6%
Colorado	11/21/20	142	-80%	1.7%
Washington	11/25/20	138	-79%	2.3%
Kansas	11/25/20	138	-96%	0.9%
Minnesota	11/30/20	133	-74%	1.7%
Rhode Island	12/5/20	128	-100%	0.3%
Pennsylvania	12/5/20	128	-69%	3.9%
Indiana	12/5/20	128	-85%	2.0%
Alaska	12/5/20	128	-84%	0.2%
Oregon	12/6/20	127	-71%	1.3%
Ohio	12/10/20	123	-83%	3.5%
Idaho	12/10/20	123	-91%	0.5%
Tennessee	12/18/20	115	-91%	2.1%
Puerto Rico	12/19/20	114	-28%	1.0%
West Virginia	1/3/21	99	-80%	0.5%

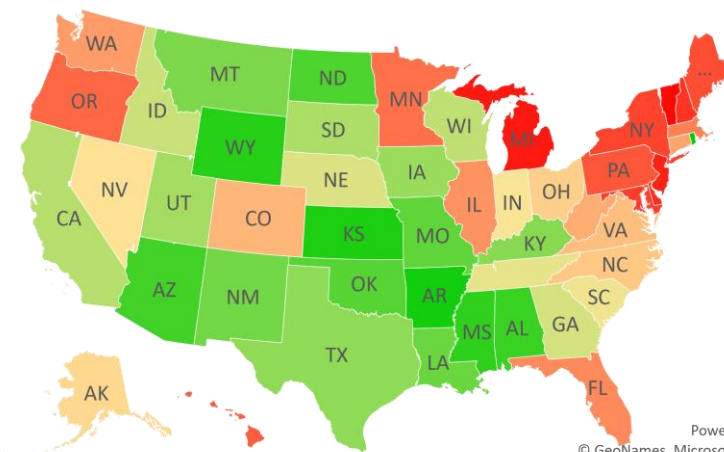
	<i>Sorted</i>			
	Peak Date	4/12/21	% off the Peak	% US Pop
United States	1/9/21	93	-79%	100%
<b>States:</b>				
Arizona	1/3/21	99	-94%	2.2%
New Hampshire	1/4/21	98	-62%	0.4%
Texas	1/7/21	95	-93%	8.7%
Louisiana	1/7/21	95	-94%	1.4%
Alabama	1/7/21	95	-94%	1.5%
Utah	1/8/21	94	-92%	1.0%
Kentucky	1/8/21	94	-93%	1.3%
Florida	1/8/21	94	-75%	6.5%
New York	1/9/21	93	-64%	5.9%
Nevada	1/9/21	93	-84%	0.9%
New Jersey	1/9/21	93	-57%	2.7%
North Carolina	1/9/21	93	-82%	3.2%
Mississippi	1/9/21	93	-95%	0.9%
Massachusetts	1/9/21	93	-75%	2.1%
Delaware	1/9/21	93	-58%	0.3%
South Carolina	1/10/21	92	-87%	1.6%
Oklahoma	1/10/21	92	-94%	1.2%
Maryland	1/10/21	92	-62%	1.8%
Georgia	1/10/21	92	-91%	3.2%
District of Columbia	1/10/21	92	-74%	0.2%
California	1/10/21	92	-92%	11.9%
Arkansas	1/10/21	92	-96%	0.9%
Connecticut	1/13/21	89	-80%	1.1%
Maine	1/15/21	87	-67%	0.4%
Virginia	1/18/21	84	-82%	2.6%
U.S. Virgin Islands	3/28/21	15	-100%	0.0%
Vermont	4/2/21	10	-26%	0.2%

## # Days since Daily Case Peak: **Longer = Good**



Powered by Bing © GeoNames, Microsoft, TomTom

## Daily Cases % off the Peak: **Larger Decline = Good**



Powered by Bing © GeoNames, Microsoft, TomTom

# #7: US New Cases by States... (sorted by today's new cases)

*Sorted*

7D Ago      Last 3-day Trend

*RI COVID stats are not updated today due to a network issue...*

	4/5/21	4/10/21	4/11/21	4/12/21	vs 7D ago
United States	66,183	64,658	47,042	61,389	-4,794
<b>States:</b>					
Michigan	10,293	6,892	0	9,674	
North Carolina	6,401	0	0	5,655	
New York	6,583	7,283	6,764	4,926	
Pennsylvania	2,718	4,882	3,362	3,088	
Connecticut	2,699	0	0	2,985	
Tennessee	3,408	0	0	2,829	
California	2,112	4,466	4,954	2,649	<--higher
Illinois	2,102	3,630	2,942	2,433	
New Jersey	2,457	2,922	2,870	2,062	
Minnesota	1,383	2,449	1,776	1,993	<--higher
Ohio	2,918	2,048	1,855	1,934	
Florida	3,480	6,906	5,520	1,613	
Massachusetts	2,988	2,300	1,991	1,532	
Washington	1,388	1,223	0	1,451	
Texas	837	1,902	1,516	1,444	<--higher
Virginia	1,023	1,700	1,227	1,310	<--higher
Indiana	715	1,358	1,159	1,131	<--higher
Louisiana	1,259	0	0	999	
Maryland	859	1,584	1,483	985	
Oklahoma	873	0	0	968	
Colorado	867	1,455	1,235	912	
Puerto Rico	306	1,000	680	756	<--higher
South Carolina	1,195	1,011	918	736	
Arizona	608	819	540	675	
New Mexico	443	0	0	619	<--higher
Georgia	501	1,019	725	583	
Kansas	354	0	0	483	<--higher
Wisconsin	307	804	569	402	<--higher

*Sorted*

7D Ago      Last 3-day Trend

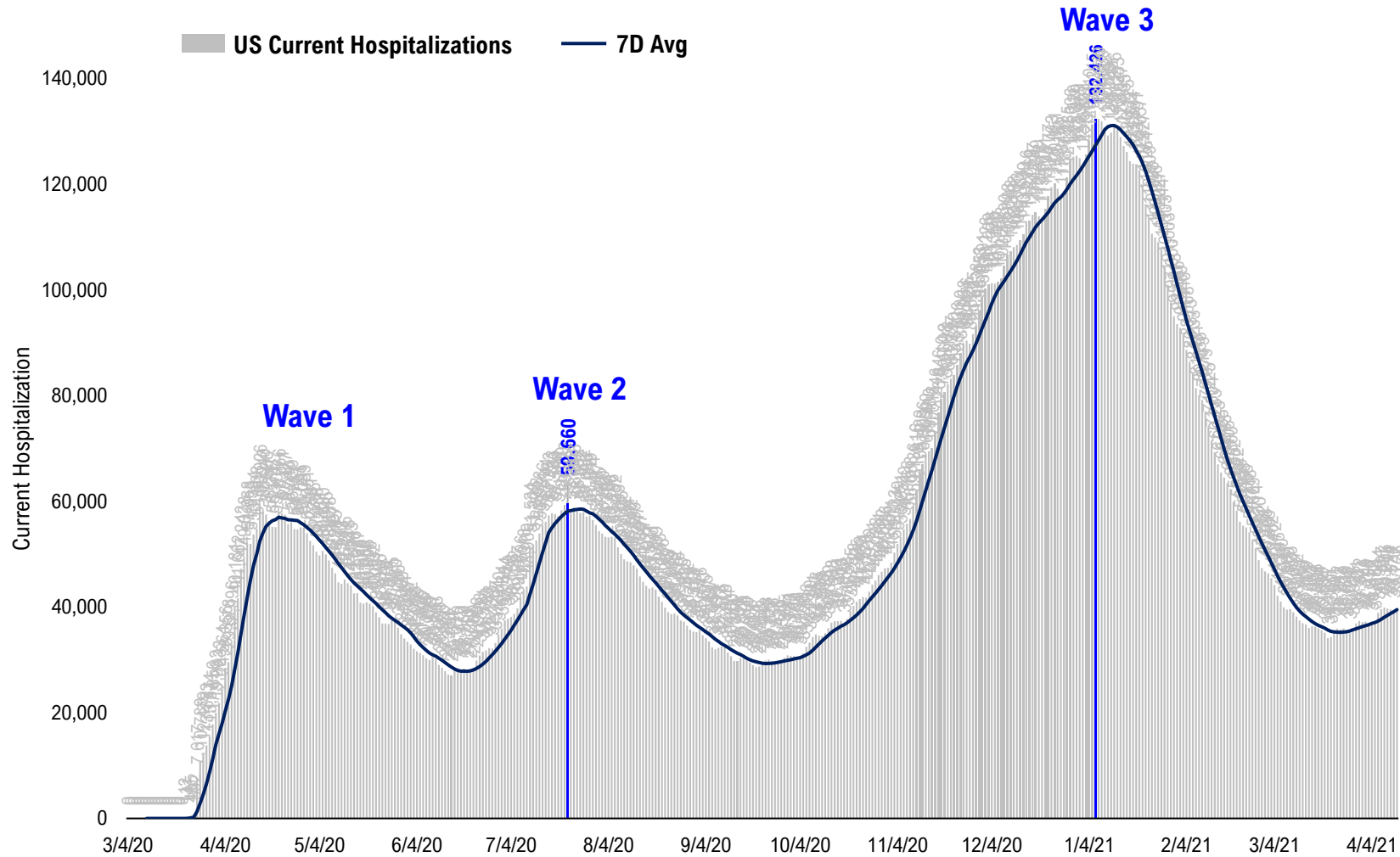
*RI COVID stats are not updated today due to a network issue...*

	4/5/21	4/10/21	4/11/21	4/12/21	vs 7D ago
United States	66,183	64,658	47,042	61,389	-4,794
<b>States:</b>					
Alaska	483	0	0	386	
New Hampshire	279	468	408	375	<--higher
Delaware	201	419	367	355	<--higher
Nevada	181	752	320	319	<--higher
Idaho	337	0	221	317	
Maine	223	311	215	296	<--higher
West Virginia	277	455	415	293	
Oregon	246	747	483	282	
Kentucky	405	500	365	267	
Missouri	206	426	281	198	
South Dakota	156	238	0	187	
Utah	173	407	344	185	
Iowa	178	358	358	179	
Alabama	109	354	311	172	<--higher
Nebraska	146	436	197	144	
Wyoming	82	0	0	115	<--higher
Vermont	118	150	237	89	
District of Columbia	75	128	68	73	
Montana	0	168	41	70	
Mississippi	70	238	117	70	
Hawaii	93	113	92	70	
North Dakota	76	213	44	63	
Arkansas	42	124	72	57	<--higher
U.S. Virgin Islands	32	0	0	0	
Rhode Island	918	0	0	0	
Northern Mariana Islands	0	0	0	0	
Guam	0	0	0	0	
American Samoa	0	0	0	0	



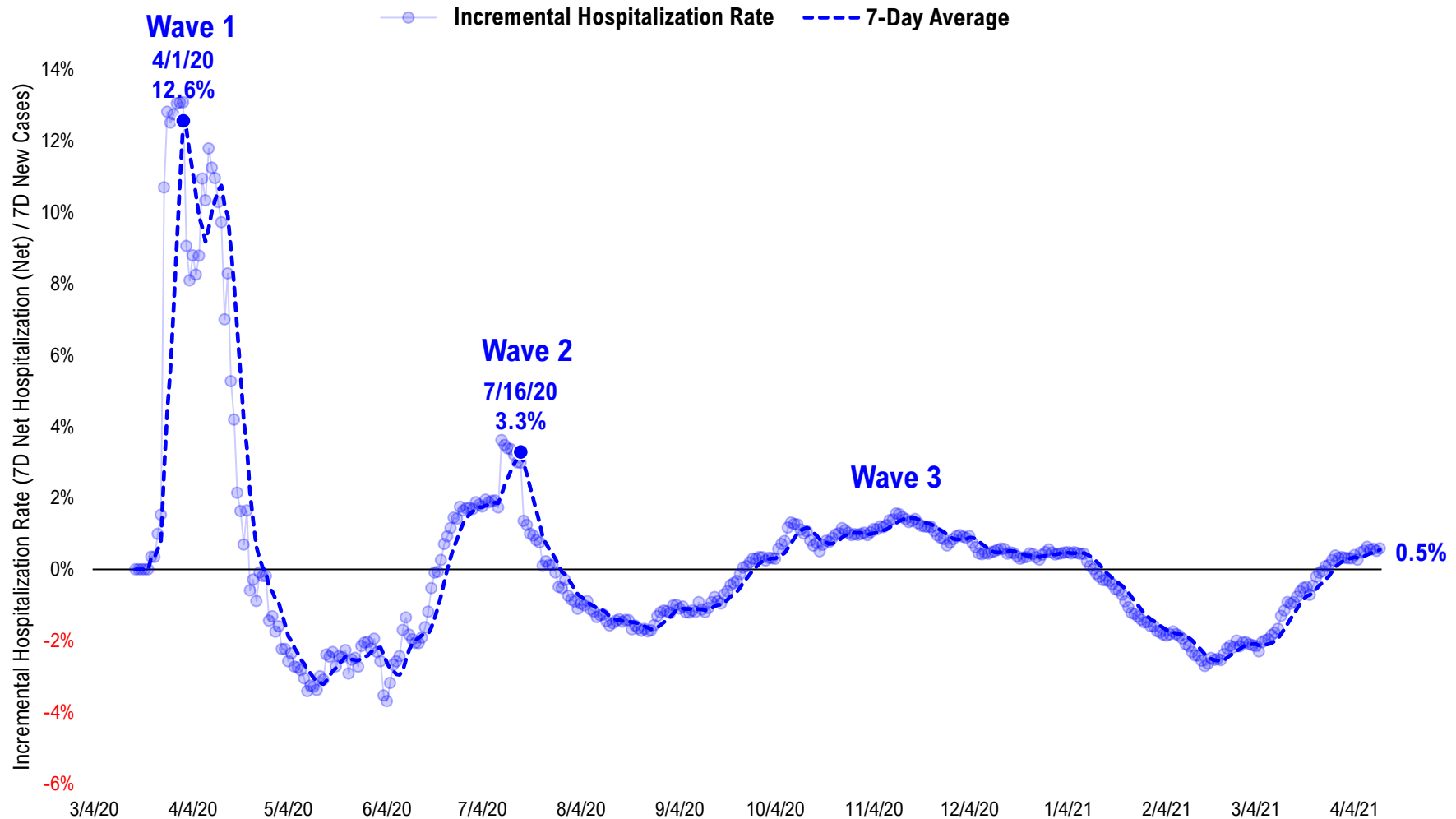
# #8: US Daily Hospitalizations...

### US Net Hospitalizations (aggregate of 50 states + Washington, D.C.)



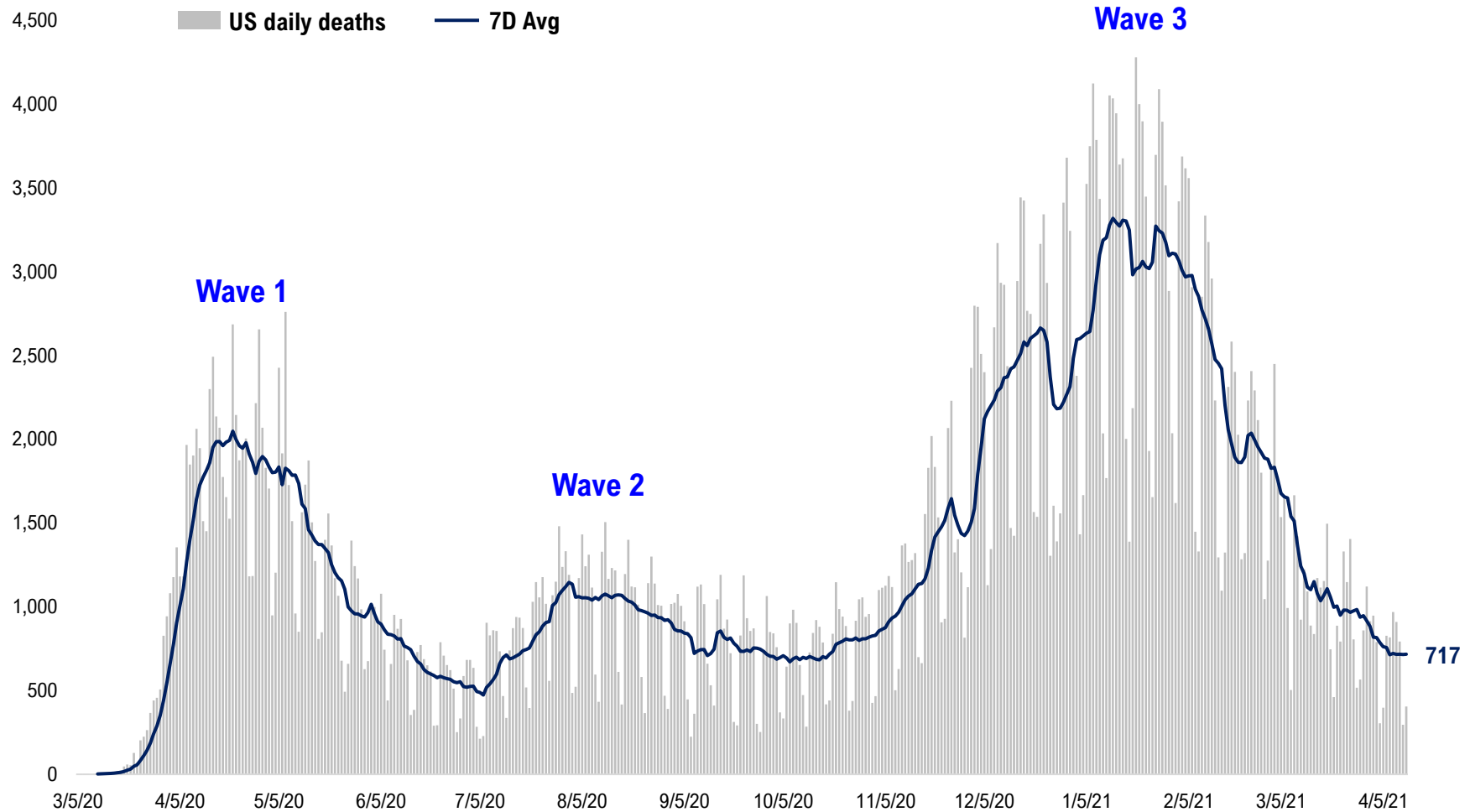
# #9: Incremental Hospitalization Rate...

Incremental Hospitalization Rate: 7D Net Hospitalizations / 7D Total New Cases  
(aggregate of 50 states + Washington, D.C.)

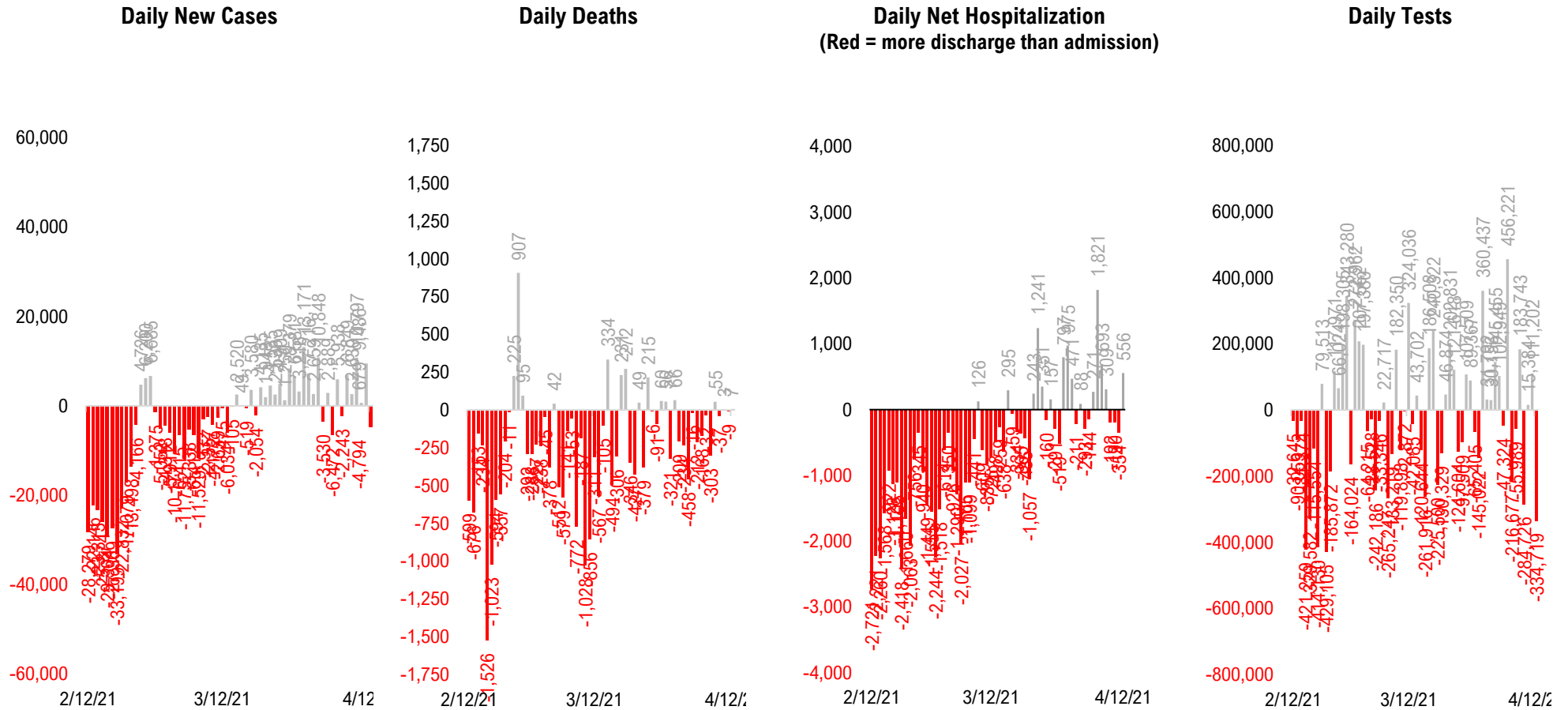


# #10: US Daily New Fatalities...

## US daily COVID-19 Fatalities

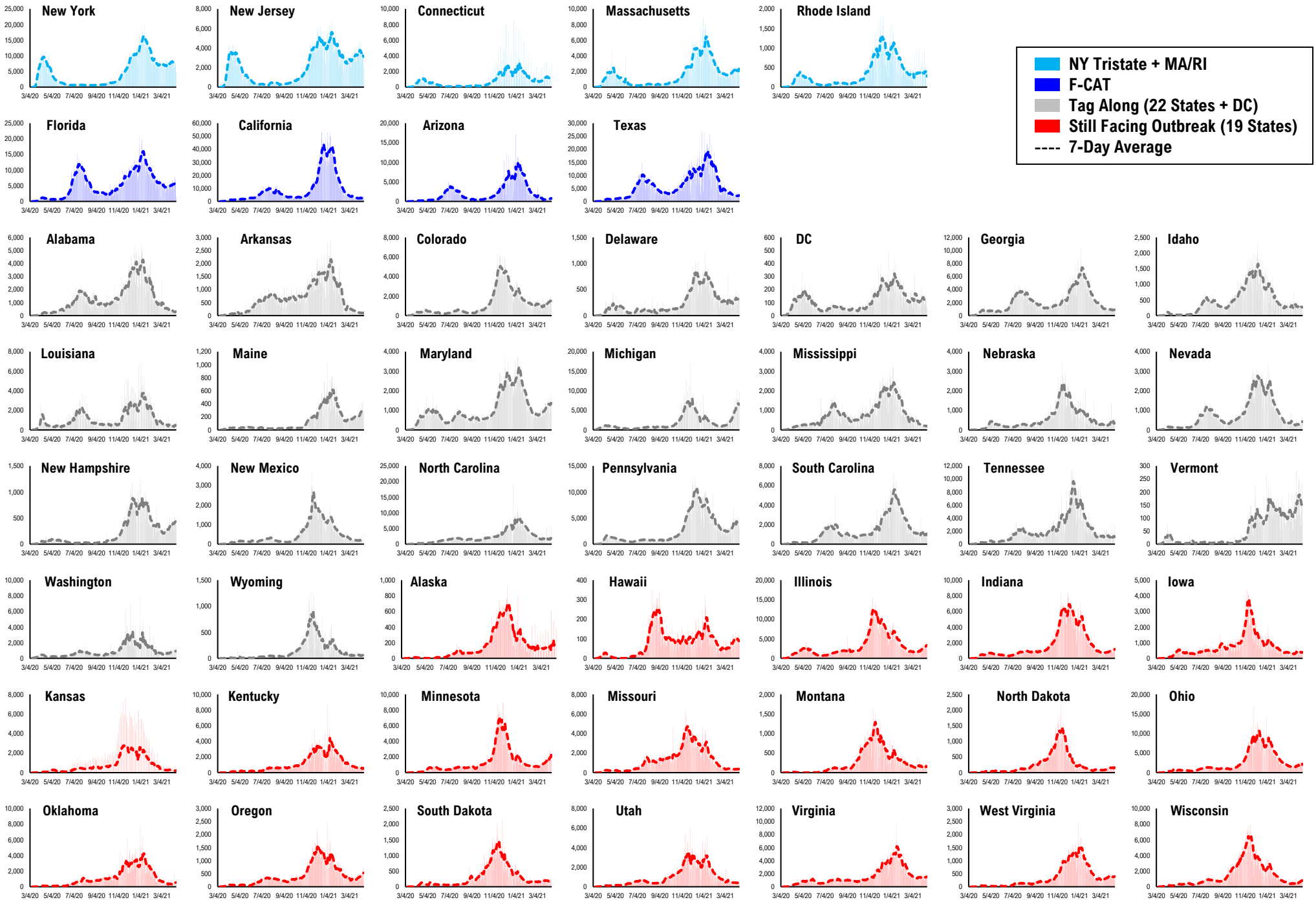


# #11: Rolling 7-Day Change in the Key Metrics... (Past 8 Weeks)

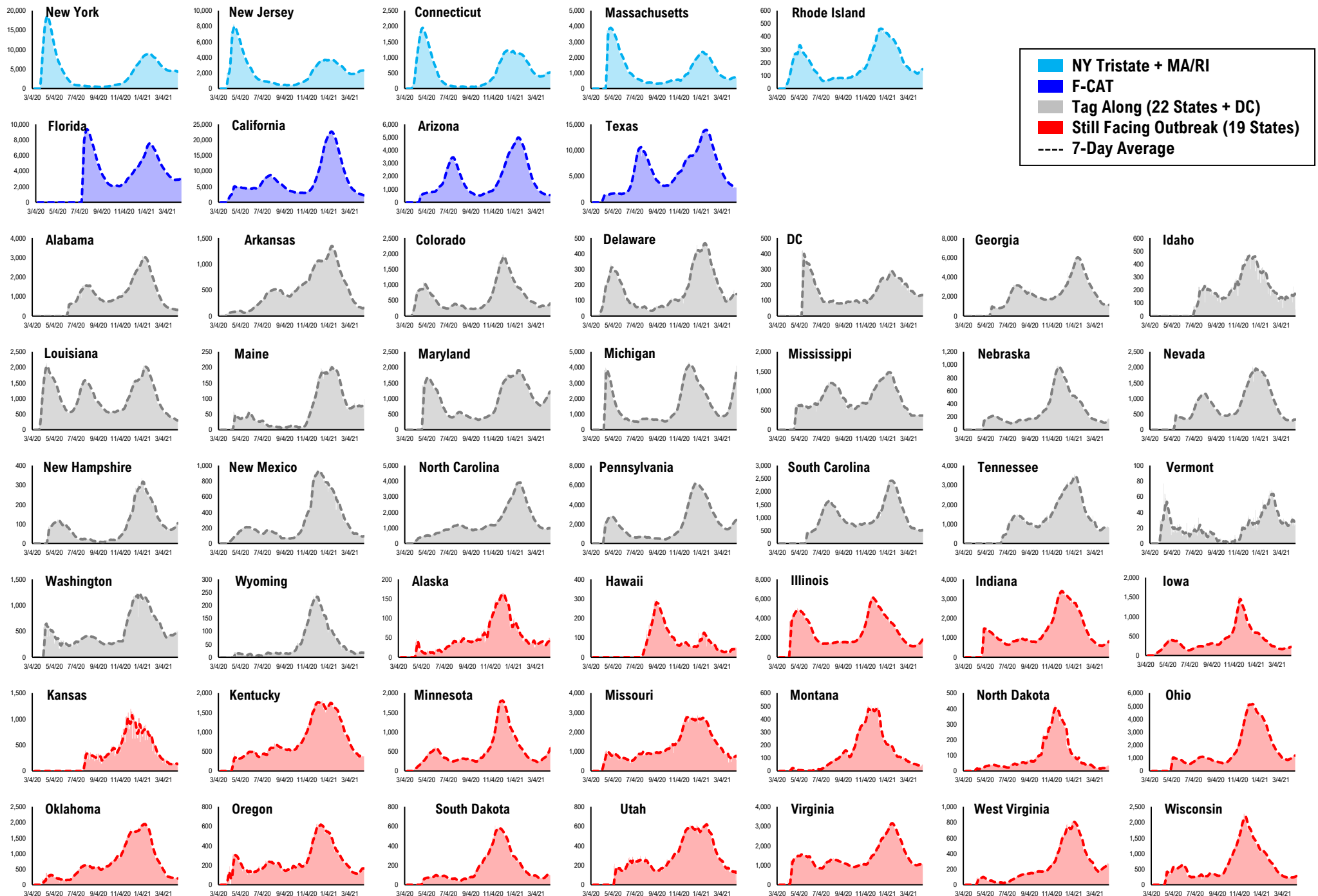


\* Ignored California between 8/10 and 8/23, due to its data glitch caused 300,000-case backlog  
Source: Fundstrat, COVID-19 Tracking Project, State Department of Health

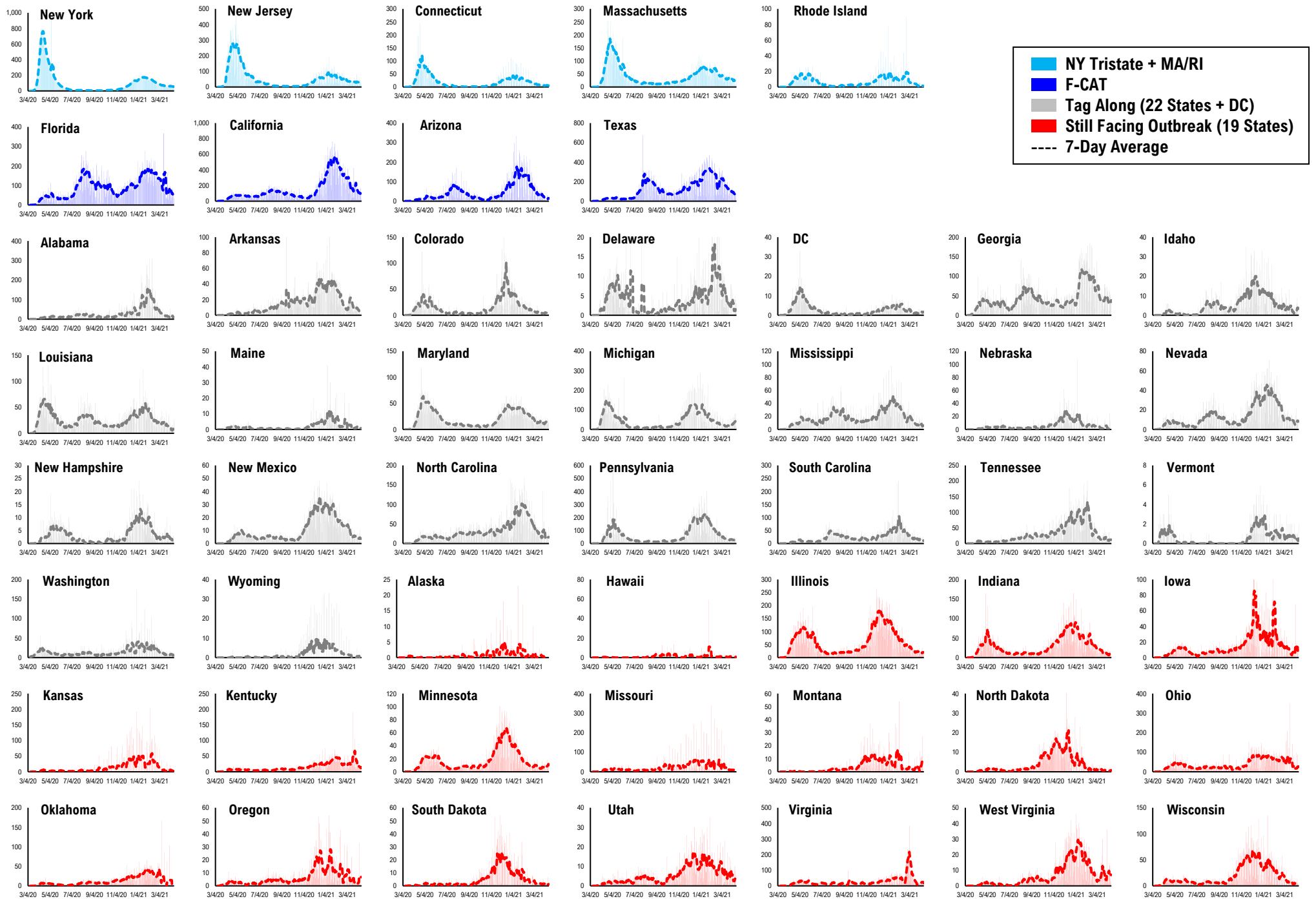
# #12: Daily New Cases by States...



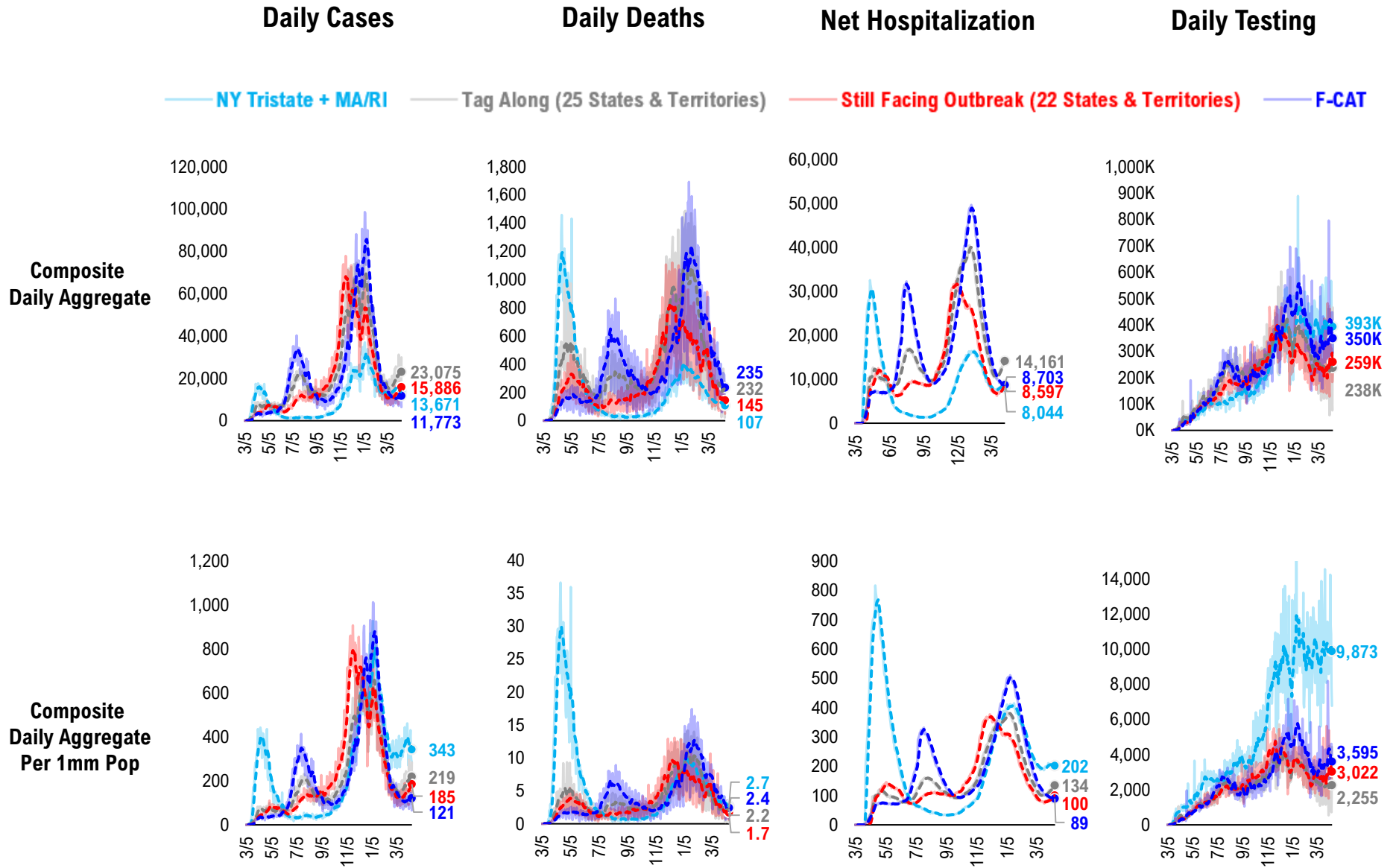
# #13: Current Hospitalizations by States...



# #14: Daily New Deaths by States...



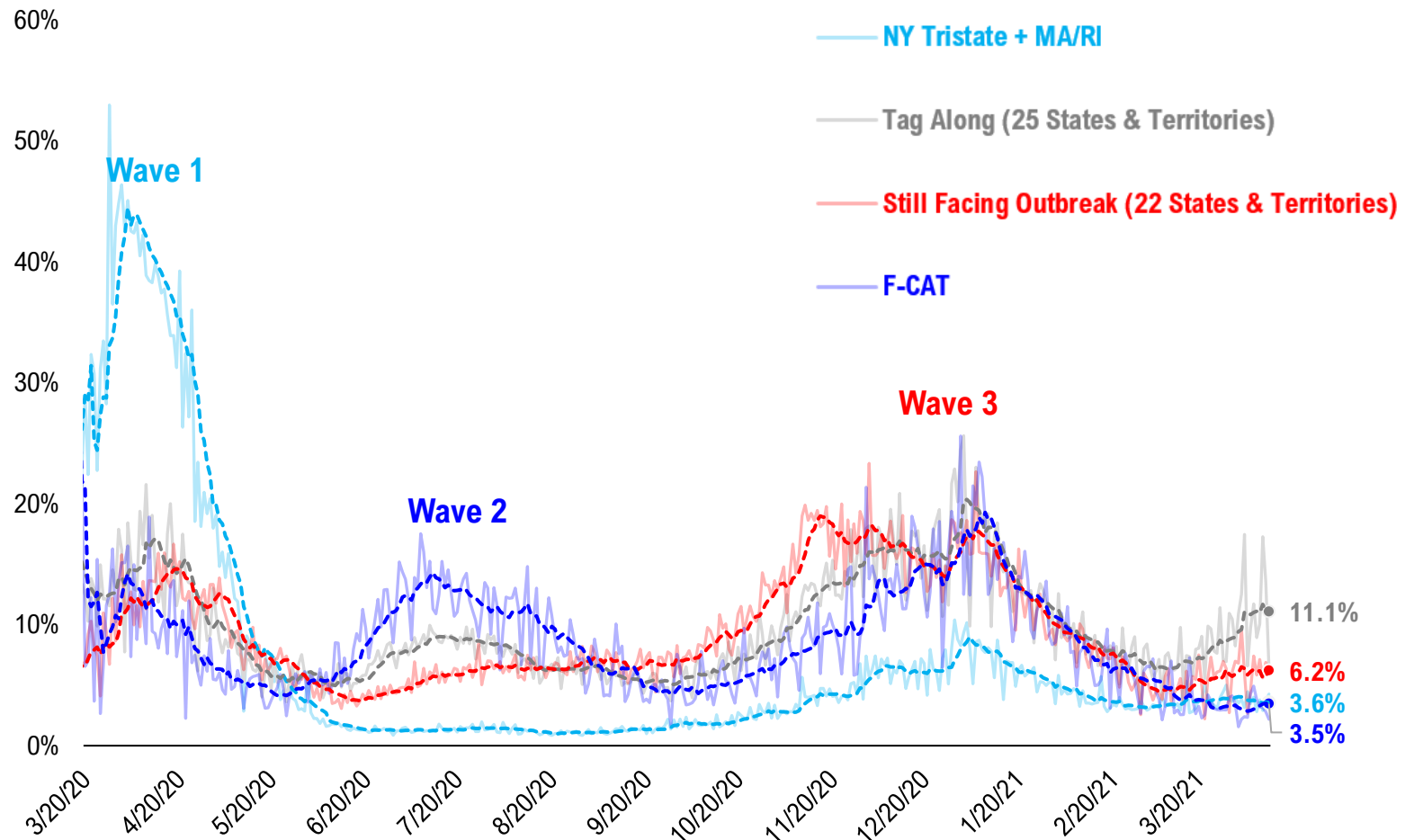
# #15: State COVID-19 situation by Tier...



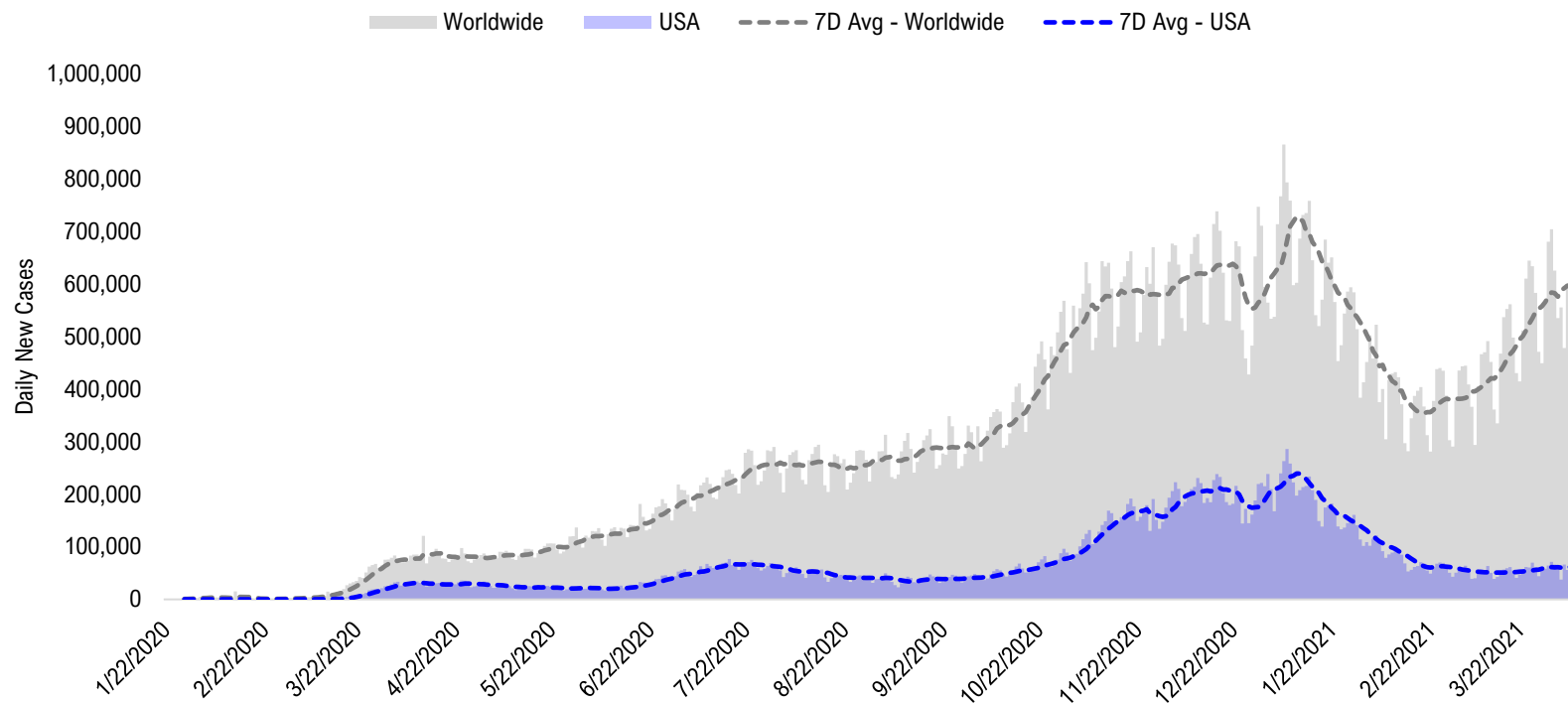


# #16: State COVID-19 Daily Positivity Rate by Tier...

## Composite Daily Positivity Rate



# #17: Global COVID-19 Situation at a Glance...



Nov 27	Dec 11	Dec 25	Jan 8	Jan 22	Feb 5	Feb 19	Mar 5	Mar 19	Apr 2	Apr 11
Europe 241,638	Europe 240,597	Europe 235,134	Europe 253,225	Europe 215,947	Europe 171,879	Europe 136,398	Europe 159,160	Europe 203,932	Europe 246,319	Europe 231,273
US + Canada 169,379	US + Canada 210,059	US + Canada 192,649	US + Canada 239,474	US + Canada 180,145	US + Canada 118,696	Latin America 81,995	Latin America 92,112	Latin America 112,156	Latin America 123,113	Pakistan + India + Bangladesh 145,630
Latin America 65,408	Latin America 77,815	Latin America 83,594	Latin America 95,501	Latin America 116,888	Latin America 95,150	US + Canada 68,407	US + Canada 58,634	US + Canada 54,412	Pakistan + India + Bangladesh 78,308	Latin America 139,220
Pakistan + India + Bangladesh 48,091	Pakistan + India + Bangladesh 36,327	Pakistan + India + Bangladesh 26,900	Africa 28,432	Asia ex- India+Pakistan 26,862	Asia ex- India+Pakistan 24,436	Asia ex- India+Pakistan 17,226	Pakistan + India + Bangladesh 17,965	Pakistan + India + Bangladesh 36,253	US + Canada 65,960	US + Canada 73,481
Asia ex- India+Pakistan 15,707	Asia ex- India+Pakistan 16,852	Africa 22,109	Pakistan + India + Bangladesh 21,150	Africa 25,790	Africa 15,433	Pakistan + India + Bangladesh 13,652	Asia ex- India+Pakistan 13,960	Asia ex- India+Pakistan 16,169	Asia ex- India+Pakistan 22,160	Asia ex- India+Pakistan 24,673
Africa 13,326	Africa 15,657	Asia ex- India+Pakistan 18,034	Asia ex- India+Pakistan 20,638	Pakistan + India + Bangladesh 16,471	Pakistan + India + Bangladesh 13,449	Africa 11,086	Africa 9,369	Africa 10,204	Africa 12,282	Africa 11,316

# Disclosures

This research is for the clients of FS Insight only. For important disclosures and rating histories regarding sectors or companies that are the subject of this report, please contact your sales representative or FS Insight at 150 East 52nd Street, New York, NY, 10022 USA.

## **Analyst Certification (Reg AC)**

Thomas J. Lee, the research analyst denoted by an “AC” on the cover of this report, hereby certifies that all of the views expressed in this report accurately reflect his personal views, which have not been influenced by considerations of the firm’s business or client relationships.

Neither I, nor a member of my household is an officer, director, or advisory board member of the issuer(s) or has another significant affiliation with the issuer(s) that is/are the subject of this research report. There is a possibility that we will from time to time have long or short positions in, and buy or sell, the securities or derivatives, if any, referred to in this research

## **Conflicts of Interest**

This research contains the views, opinions and recommendations of FS Insight . As of the time of writing and publication of this presentation, FS Insight does not know of, or have reason to know of any material conflicts of interest at the time of the publication of this presentation. The Company has no contractual relationship, nor have we received any compensation from any of the companies listed in this research report.

## **Analyst Industry/Sector Views**

Positive (+): The analyst expects the performance of his industry/sector coverage universe over the next 6-18 months to be attractive vs. the relevant broad market benchmark, being the S&P 500 for North America.

Neutral (N): The analyst expects the performance of his or her industry/sector coverage universe over the next 6-18 months to be in line with the relevant broad market benchmark, being the S&P 500 for North America.

Negative (-): The analyst expects his or her industry coverage universe over the next 6-18 months to underperform vs. the relevant broad market benchmark, being the S&P 500 for North America.

## **General Disclosures**

FS Insight is an independent research company and is not a registered investment advisor and is not acting as a broker dealer under any federal or state securities laws. FS Insight is a member of IRC Securities’ Research Prime Services Platform. IRC Securities is a FINRA registered broker-dealer that is focused on supporting the independent research industry. Certain personnel of FS Insight (i.e. Research Analysts) are registered representatives of IRC Securities, a FINRA member firm registered as a broker-dealer with the Securities and Exchange Commission and certain state securities regulators. As registered representatives and independent contractors of IRC Securities, such personnel may receive commissions paid to or shared with IRC Securities for transactions placed by FS Insight clients directly with IRC Securities or with securities firms that may share commissions with IRC Securities in accordance with applicable SEC and FINRA requirements. IRC Securities does not distribute the research of FS Insight , which is available to select institutional clients that have engaged FS Insight .

As registered representatives of IRC Securities our analysts must follow IRC Securities’ Written Supervisory Procedures. Notable compliance policies include (1) prohibition of insider trading or the facilitation thereof, (2) maintaining client confidentiality, (3) archival of electronic communications, and (4) appropriate use of electronic communications, amongst other compliance related policies.

FS Insight does not have the same conflicts that traditional sell-side research organizations have because FS Insight (1) does not conduct any investment banking activities, (2) does not manage any investment funds, and (3) our clients are only institutional investors.

This research is for the clients of FS Insight only. Additional information is available upon request. Information has been obtained from sources believed to be reliable but FS Insight does not warrant its completeness or accuracy except with respect to any disclosures relative to FS Insight and the analyst’s involvement (if any) with any of the subject companies of the research. All pricing is as of the market close for the securities discussed, unless otherwise stated. Opinions and estimates constitute our judgment as of the date of this material and are subject to change without notice. Past performance is not indicative of future results. This material is not intended as an offer or solicitation for the purchase or sale of any financial instrument. The opinions and recommendations herein do not take into account individual client circumstances, risk tolerance, objectives, or needs and are not intended as recommendations of particular securities, financial instruments or strategies. The recipient of this report must make its own independent decision regarding any securities or financial instruments mentioned herein. Except in circumstances where FS Insight expressly agrees otherwise in writing, FS Insight is not acting as a municipal advisor and the opinions or views contained herein are not intended to be, and do not constitute, advice, including within the meaning of Section 15B of the Securities Exchange Act of 1934. All research reports are disseminated and available to all clients simultaneously through electronic publication to our internal client website, FS Insight .com. Not all research content is redistributed to our clients or made available to third-party aggregators or the media. Please contact your sales representative if you would like to receive any of our research publications.

**Copyright 2021 FS Insight LLC. All rights reserved. No part of this material may be reprinted, sold or redistributed without the prior written consent of FS Insight LLC.**