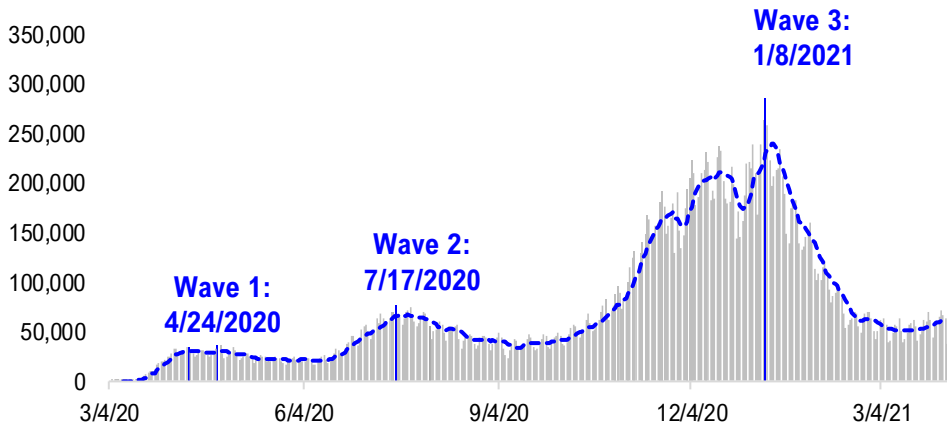


FSInsight Daily COVID-19 Chartbook

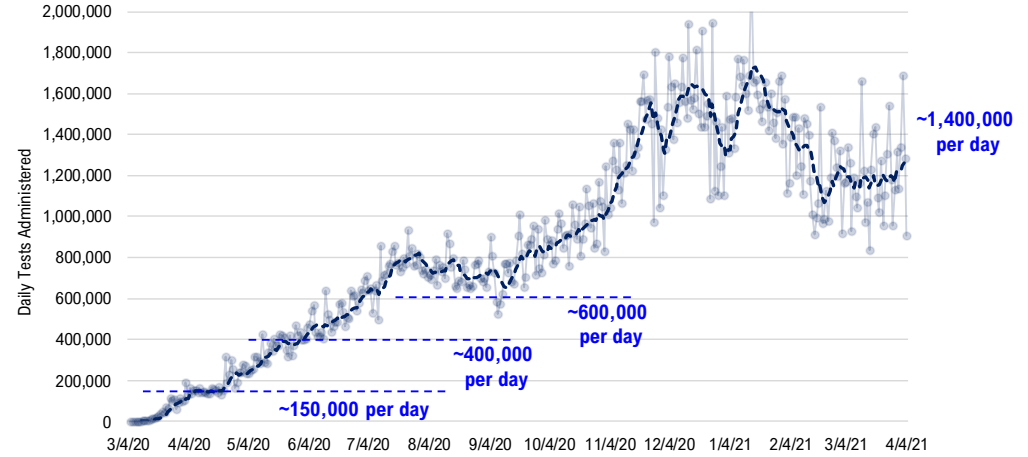


#1: USA COVID-19 Situation at a Glance...

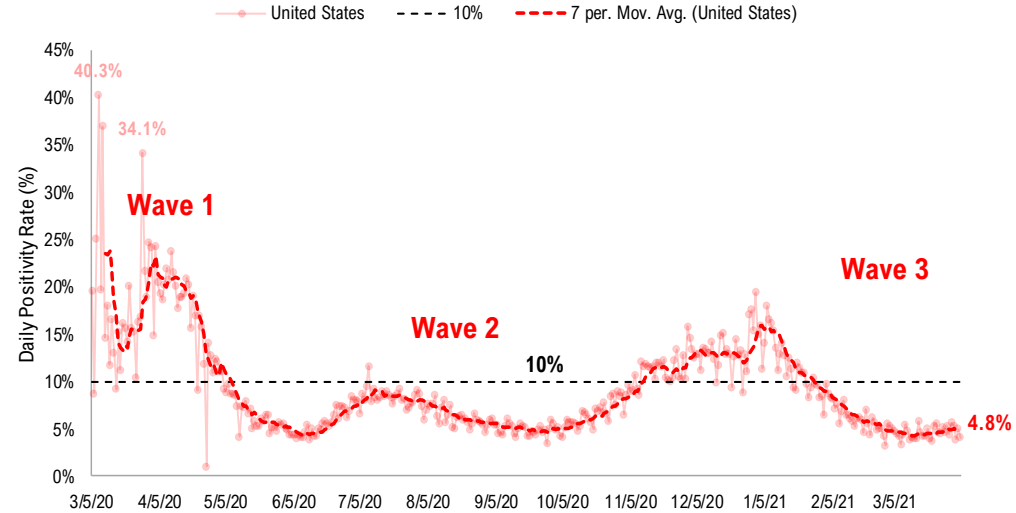
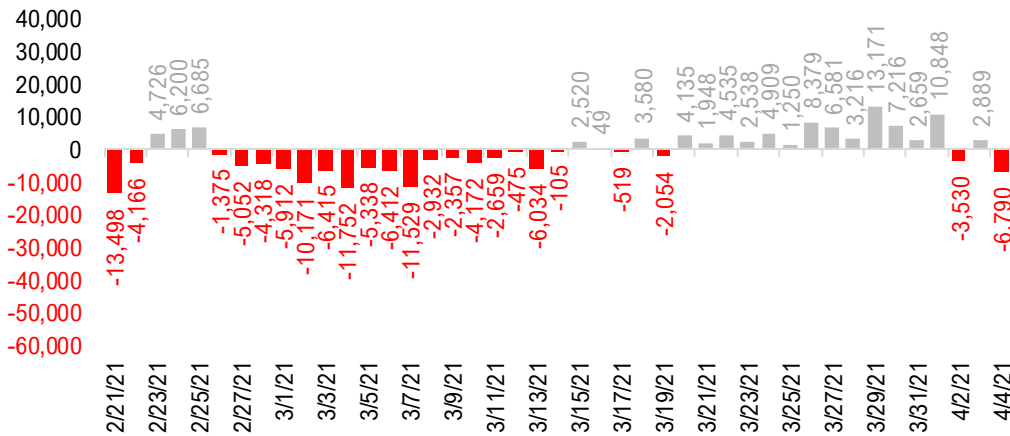
US daily new cases



USA total COVID-19 tests administered

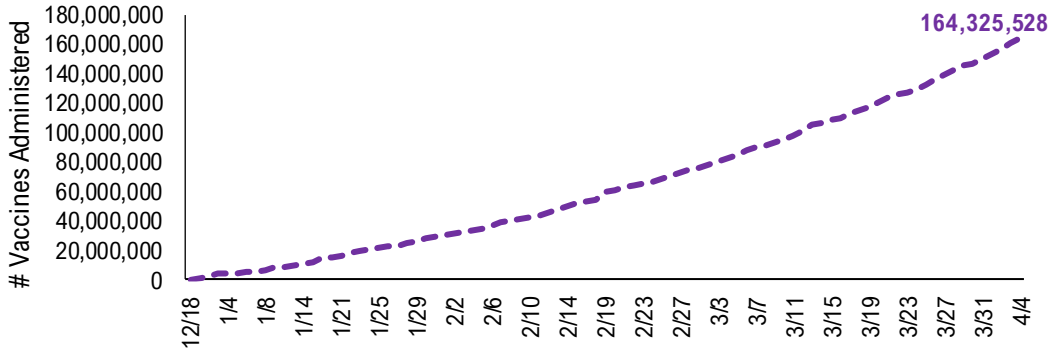


US daily new cases rolling 7D delta

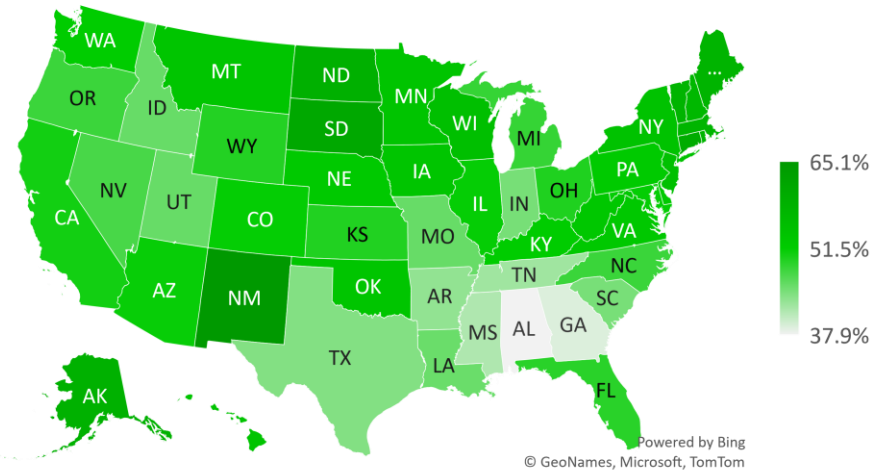


#2: USA COVID-19 Vaccination Progress at a Glance...

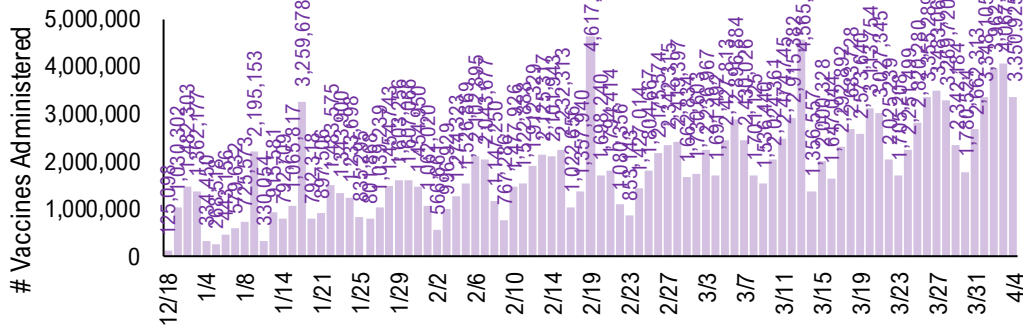
Cumulative Vaccines Administered



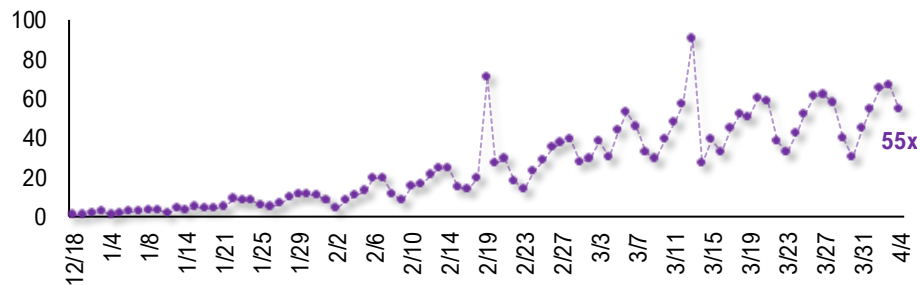
Cumulative Vaccines Administered as % State Population



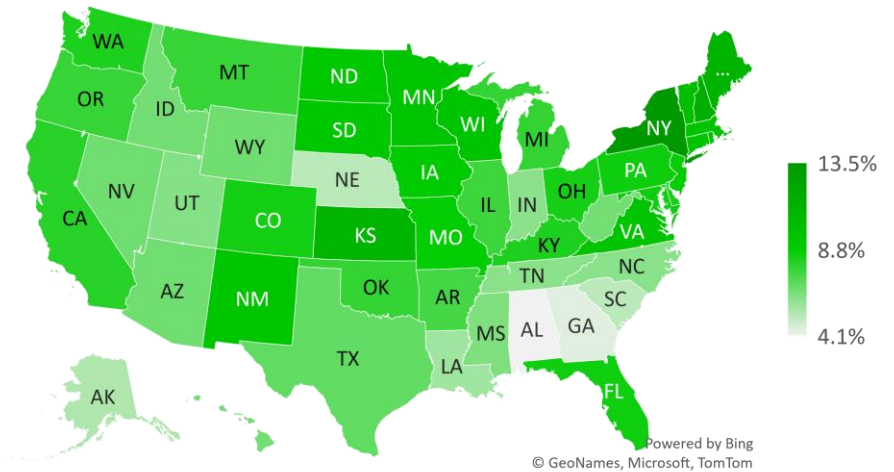
Daily Vaccines Administered



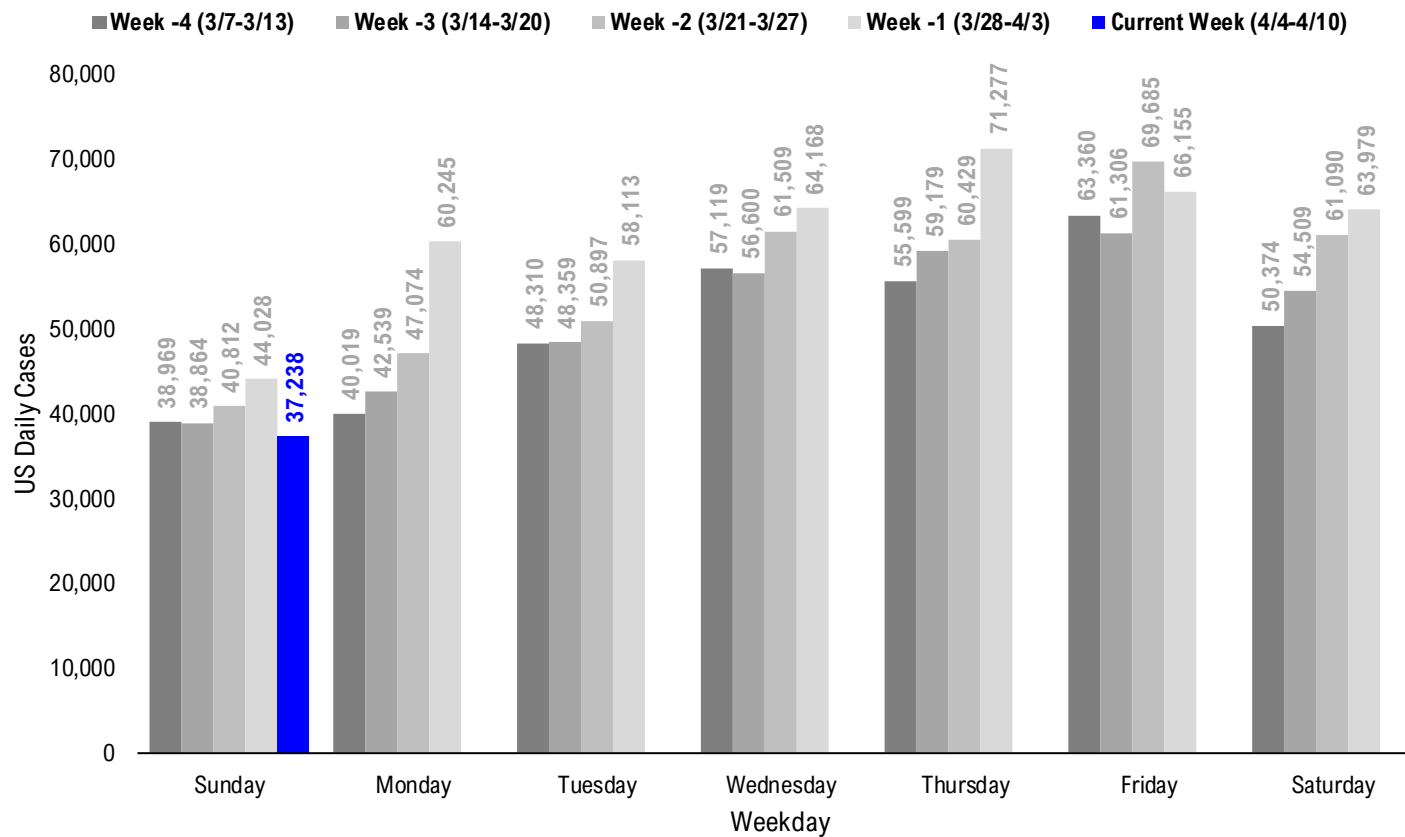
Daily Vaccinations / Daily Cases (7D Avg)



Implied Weekly Vaccines Administered as % State Population



#3: USA COVID-19 Daily Cases Weekday Seasonality (Past 4 Weeks) ...



#4: USA State COVID-19 Situation at a Glance...

| | Sorted Daily Cases | | Daily Cases (3D avg) per 1mm residents | | | | Hospitalization | | | |
|---------------|--------------------|----------|--|--------|------------|-------|-----------------|--------------------------|----------------------------------|------|
| | % US Pop | % US GDP | 7D | | Since Peak | | 7D Net | | % Hospitalization / 7D New Cases | |
| | | | 4/4 | Delta | 4/4 | Delta | # Days | % Decline in Daily Cases | | |
| United States | 100% | 100% | 37.238 | -6.790 | 170 | -8 | 85 | -79% | 1.233 | 0.3% |

| | Sorted Daily Cases | | Daily Cases (3D avg) per 1mm residents | | | | Hospitalization | | | |
|---------------|--------------------|----------|--|--------|------------|-------|-----------------|--------------------------|----------------------------------|------|
| | % US Pop | % US GDP | 7D | | Since Peak | | 7D Net | | % Hospitalization / 7D New Cases | |
| | | | 4/4 | Delta | 4/4 | Delta | # Days | % Decline in Daily Cases | | |
| United States | 100% | 100% | 37.238 | -6.790 | 170 | -8 | 85 | -79% | 1.233 | 0.3% |

States:

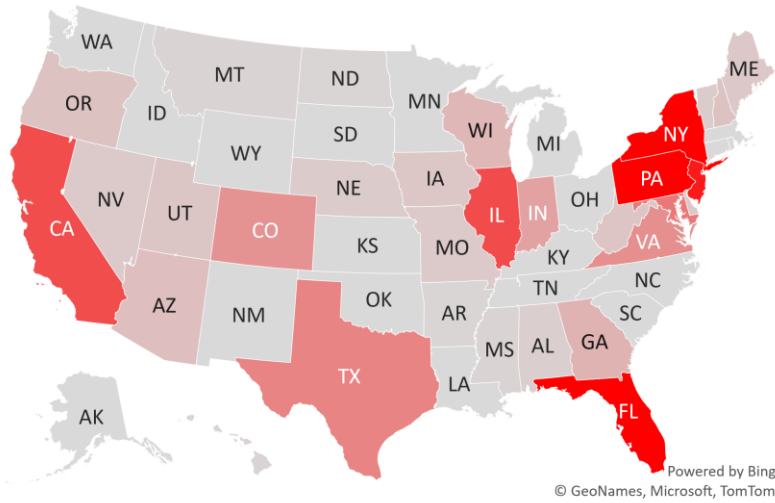
| | | | | | | | | | | | |
|----|---------------|-------|-------|-------|--------|-----|------|-----|------|------|---------|
| 1 | New York | 5.9% | 8.1% | 7,467 | -1,928 | 396 | -51 | 85 | -57% | -156 | (0.3%) |
| 2 | Florida | 6.5% | 5.0% | 4,794 | -149 | 269 | +11 | 86 | -70% | 3 | 0.0% |
| 3 | Pennsylvania | 3.9% | 3.8% | 3,933 | +3,887 | 363 | +48 | 120 | -61% | 346 | 0.0% |
| 4 | New Jersey | 2.7% | 3.0% | 3,281 | -609 | 412 | -37 | 85 | -40% | 57 | 0.2% |
| 5 | Illinois | 3.8% | 4.2% | 2,449 | +199 | 224 | +16 | 142 | -79% | 154 | 0.8% |
| 6 | California | 11.9% | 14.6% | 2,400 | -598 | 82 | +7 | 84 | -94% | -239 | (1.3%) |
| 7 | Maryland | 1.8% | 2.0% | 1,669 | +334 | 243 | +19 | 84 | -59% | 161 | 1.7% |
| 8 | Texas | 8.7% | 8.8% | 1,465 | -453 | 60 | -14 | 87 | -92% | -287 | (1.8%) |
| 9 | Virginia | 2.6% | 2.6% | 1,267 | -125 | 170 | -30 | 76 | -82% | 25 | 0.3% |
| 10 | Colorado | 1.7% | 1.8% | 1,220 | +263 | 257 | +45 | 134 | -75% | 1 | 0.0% |
| 11 | Indiana | 2.0% | 1.8% | 945 | +1 | 158 | +9 | 120 | -87% | 74 | 1.1% |
| 12 | Georgia | 3.2% | 2.9% | 653 | -95 | 81 | -9 | 84 | -90% | -35 | (0.6%) |
| 13 | Wisconsin | 1.8% | 1.6% | 584 | +156 | 124 | +49 | 142 | -90% | 8 | 0.2% |
| 14 | Puerto Rico | 1.0% | 0.5% | 470 | +233 | 148 | +78 | 106 | -58% | 64 | 2.6% |
| 15 | Arizona | 2.2% | 1.7% | 464 | -90 | 97 | +10 | 91 | -94% | -24 | (0.5%) |
| 16 | Oregon | 1.3% | 1.2% | 402 | +152 | 107 | +17 | 119 | -74% | 49 | 1.7% |
| 17 | New Hampshire | 0.4% | 0.4% | 398 | +116 | 320 | +78 | 90 | -60% | 11 | 0.4% |
| 18 | West Virginia | 0.5% | 0.4% | 350 | +53 | 227 | -26 | 91 | -79% | 37 | 1.3% |
| 19 | Utah | 1.0% | 0.9% | 344 | -45 | 126 | -9 | 86 | -90% | -13 | (0.5%) |
| 20 | Iowa | 1.0% | 0.9% | 332 | -48 | 124 | -14 | 142 | -90% | 9 | 0.3% |
| 21 | Delaware | 0.3% | 0.4% | 299 | -62 | 407 | +56 | 85 | -57% | 30 | 1.3% |
| 22 | Maine | 0.4% | 0.3% | 295 | +98 | 242 | +78 | 79 | -60% | -6 | (0.3%) |
| 23 | Missouri | 1.8% | 1.5% | 279 | +16 | 62 | +3 | 141 | -92% | -251 | (10.2%) |
| 24 | Nevada | 0.9% | 0.8% | 260 | +117 | 115 | +19 | 85 | -88% | 22 | 1.0% |
| 25 | Vermont | 0.2% | 0.2% | 244 | +47 | 334 | +11 | 2 | -3% | 6 | 0.5% |
| 26 | Nebraska | 0.6% | 0.6% | 242 | -64 | 330 | +124 | 136 | -77% | 30 | 0.9% |
| 27 | Alabama | 1.5% | 1.1% | 194 | -125 | 64 | -21 | 87 | -94% | -31 | (1.3%) |
| 28 | Montana | 0.3% | 0.2% | 107 | +76 | 130 | +37 | 140 | -90% | -2 | (0.2%) |

States:

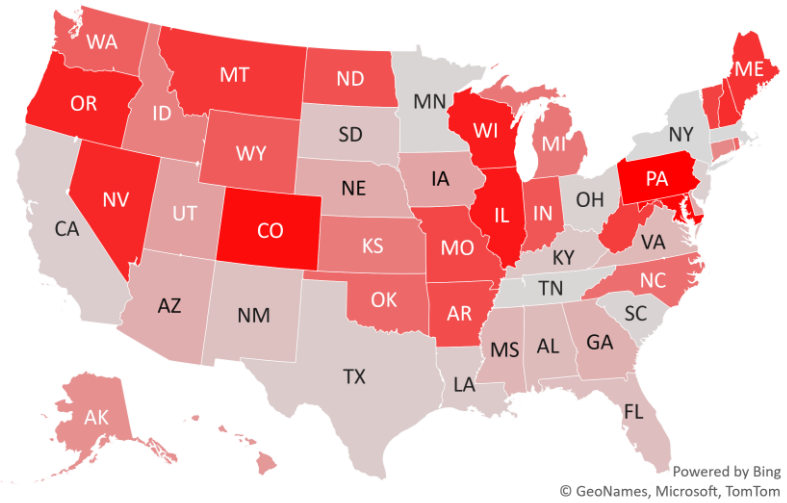
| | | | | | | | | | | | |
|----|---------------------|------|------|-----|--------|------|------|-----|-------|-----|--------|
| 29 | District of Columbi | 0.2% | 0.7% | 105 | -19 | 180 | -59 | 84 | -63% | 0 | 0.0% |
| 30 | Mississippi | 0.9% | 0.6% | 97 | -99 | 75 | -0 | 85 | -92% | 0 | 0.0% |
| 31 | Hawaii | 0.4% | 0.5% | 96 | -6 | 80 | +1 | 218 | -61% | 1 | 0.1% |
| 32 | Arkansas | 0.9% | 0.6% | 72 | +15 | 34 | +2 | 84 | -96% | -26 | (3.4%) |
| 33 | North Dakota | 0.2% | 0.3% | 61 | +14 | 148 | -20 | 141 | -94% | 11 | 1.0% |
| 34 | Wyoming | 0.2% | 0.2% | 0 | +0 | 33 | -39 | 136 | -98% | 1 | 0.2% |
| 35 | Washington | 2.3% | 2.7% | 0 | +0 | 98 | +6 | 130 | -82% | 59 | 1.0% |
| 36 | U.S. Virgin Islands | 0.0% | 0.0% | 0 | -6 | 0 | -436 | 7 | -100% | 0 | |
| 37 | Tennessee | 2.1% | 1.8% | 0 | -1,612 | 0 | -117 | 107 | -100% | 19 | 0.4% |
| 38 | South Dakota | 0.3% | 0.3% | 0 | -163 | 140 | -93 | 141 | -93% | 23 | 2.1% |
| 39 | South Carolina | 1.6% | 1.1% | 0 | -1,085 | 168 | -174 | 84 | -87% | -22 | (0.4%) |
| 40 | Rhode Island | 0.3% | 0.3% | 0 | +0 | 128 | -25 | 120 | -92% | 19 | 0.8% |
| 41 | Oklahoma | 1.2% | 1.0% | 0 | +0 | 31 | -8 | 84 | -98% | -25 | (1.1%) |
| 42 | Ohio | 3.5% | 3.3% | 0 | -1,019 | 113 | -42 | 115 | -89% | 91 | 0.7% |
| 43 | New Mexico | 0.6% | 0.5% | 0 | -161 | 33 | -56 | 135 | -98% | -15 | (1.4%) |
| 44 | North Carolina | 3.2% | 2.7% | 0 | +0 | 0 | -68 | 85 | -100% | 52 | 0.5% |
| 45 | Northern Mariana | 0.0% | 0.0% | 0 | +0 | 0 | +0 | 159 | -100% | 0 | |
| 46 | Minnesota | 1.7% | 1.8% | 0 | -1,225 | 272 | -4 | 125 | -81% | 58 | 0.5% |
| 47 | Michigan | 3.0% | 2.6% | 0 | +0 | 464 | +141 | 137 | -46% | 844 | 2.1% |
| 48 | Massachusetts | 2.1% | 2.8% | 0 | -1,975 | 237 | -117 | 85 | -79% | 50 | 0.4% |
| 49 | Louisiana | 1.4% | 1.3% | 0 | -448 | 0 | -64 | 87 | -100% | -31 | (1.3%) |
| 50 | Kentucky | 1.3% | 1.0% | 0 | -358 | 94 | -26 | 86 | -92% | 11 | 0.3% |
| 51 | Kansas | 0.9% | 0.8% | 0 | +0 | 57 | -1 | 130 | -96% | -1 | (0.1%) |
| 52 | Idaho | 0.5% | 0.4% | 0 | +0 | 53 | -48 | 115 | -95% | 16 | 0.9% |
| 53 | Guam | 0.0% | 0.0% | 0 | +0 | 32 | +0 | 145 | -97% | 0 | 0.0% |
| 54 | Connecticut | 1.1% | 1.3% | 0 | +0 | 139 | -20 | 81 | -90% | 43 | 0.5% |
| 55 | American Samoa | 0.0% | 0.0% | 0 | +0 | #N/A | +0 | 0 | 0% | 0 | |
| 56 | Alaska | 0.2% | 0.3% | 0 | +0 | 89 | +6 | 120 | -92% | 12 | 1.0% |

#5: USA COVID-19 Heat Map...

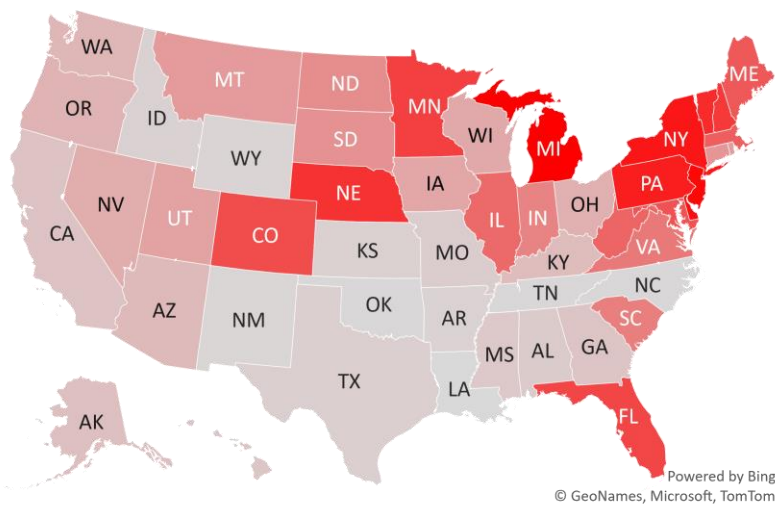
Daily Case Increases



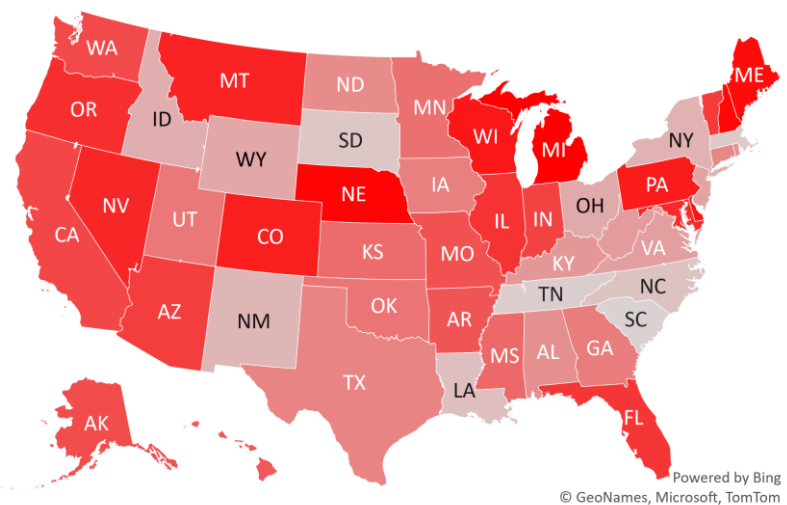
7D Delta in Daily New Cases



Daily Case Increases per 1mm Resident (3D Avg)



7D Delta in Daily Case Increases per 1mm Resident (3D Avg)



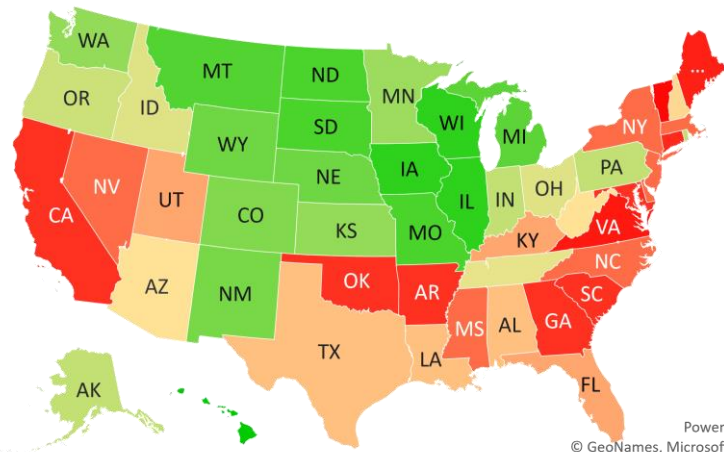
#6: # of Days since Daily Case Peaked by States...

Days since Daily Cases (3D Avg) Peak (as of 4/4)

| | Peak Date | 4/4/21 | % off the Peak | % US Pop |
|-------------------------|-----------|--------|----------------|----------|
| United States | 1/9/21 | 85 | -79% | 100% |
| Sorted | | | | |
| States: | | | | |
| Hawaii | 8/29/20 | 218 | -61% | 0.4% |
| Northern Mariana Island | 10/27/20 | 159 | -100% | 0.0% |
| Guam | 11/10/20 | 145 | -97% | 0.0% |
| Wisconsin | 11/13/20 | 142 | -90% | 1.8% |
| Illinois | 11/13/20 | 142 | -79% | 3.8% |
| Iowa | 11/13/20 | 142 | -90% | 1.0% |
| South Dakota | 11/14/20 | 141 | -93% | 0.3% |
| North Dakota | 11/14/20 | 141 | -94% | 0.2% |
| Missouri | 11/14/20 | 141 | -92% | 1.8% |
| Montana | 11/15/20 | 140 | -90% | 0.3% |
| Michigan | 11/18/20 | 137 | -46% | 3.0% |
| Wyoming | 11/19/20 | 136 | -98% | 0.2% |
| Nebraska | 11/19/20 | 136 | -77% | 0.6% |
| New Mexico | 11/20/20 | 135 | -98% | 0.6% |
| Colorado | 11/21/20 | 134 | -75% | 1.7% |
| Washington | 11/25/20 | 130 | -82% | 2.3% |
| Kansas | 11/25/20 | 130 | -96% | 0.9% |
| Minnesota | 11/30/20 | 125 | -81% | 1.7% |
| Rhode Island | 12/5/20 | 120 | -92% | 0.3% |
| Pennsylvania | 12/5/20 | 120 | -61% | 3.9% |
| Indiana | 12/5/20 | 120 | -87% | 2.0% |
| Alaska | 12/5/20 | 120 | -92% | 0.2% |
| Oregon | 12/6/20 | 119 | -74% | 1.3% |
| Ohio | 12/10/20 | 115 | -89% | 3.5% |
| Idaho | 12/10/20 | 115 | -95% | 0.5% |
| Tennessee | 12/18/20 | 107 | -100% | 2.1% |
| Puerto Rico | 12/19/20 | 106 | -58% | 1.0% |
| West Virginia | 1/3/21 | 91 | -79% | 0.5% |

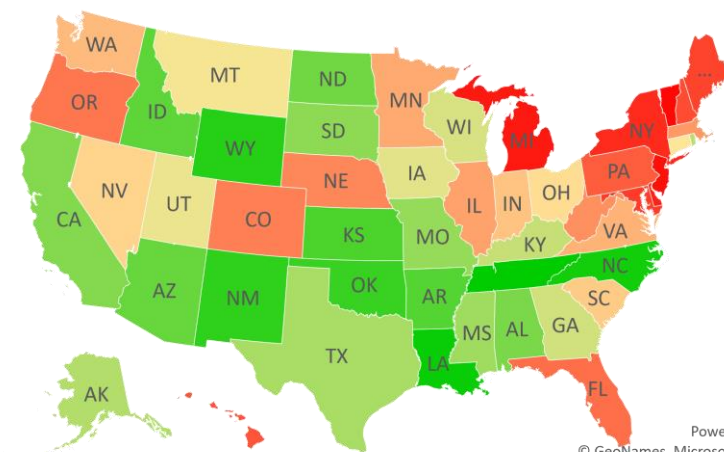
| | Peak Date | 4/4/21 | % off the Peak | % US Pop |
|----------------------|-----------|--------|----------------|----------|
| United States | 1/9/21 | 85 | -79% | 100% |
| Sorted | | | | |
| States: | | | | |
| Arizona | 1/3/21 | 91 | -94% | 2.2% |
| New Hampshire | 1/4/21 | 90 | -60% | 0.4% |
| Texas | 1/7/21 | 87 | -92% | 8.7% |
| Louisiana | 1/7/21 | 87 | -100% | 1.4% |
| Alabama | 1/7/21 | 87 | -94% | 1.5% |
| Utah | 1/8/21 | 86 | -90% | 1.0% |
| Kentucky | 1/8/21 | 86 | -92% | 1.3% |
| Florida | 1/8/21 | 86 | -70% | 6.5% |
| New York | 1/9/21 | 85 | -57% | 5.9% |
| Nevada | 1/9/21 | 85 | -88% | 0.9% |
| New Jersey | 1/9/21 | 85 | -40% | 2.7% |
| North Carolina | 1/9/21 | 85 | -100% | 3.2% |
| Mississippi | 1/9/21 | 85 | -92% | 0.9% |
| Massachusetts | 1/9/21 | 85 | -79% | 2.1% |
| Delaware | 1/9/21 | 85 | -57% | 0.3% |
| South Carolina | 1/10/21 | 84 | -87% | 1.6% |
| Oklahoma | 1/10/21 | 84 | -98% | 1.2% |
| Maryland | 1/10/21 | 84 | -59% | 1.8% |
| Georgia | 1/10/21 | 84 | -90% | 3.2% |
| District of Columbia | 1/10/21 | 84 | -63% | 0.2% |
| California | 1/10/21 | 84 | -94% | 11.9% |
| Arkansas | 1/10/21 | 84 | -96% | 0.9% |
| Connecticut | 1/13/21 | 81 | -90% | 1.1% |
| Maine | 1/15/21 | 79 | -60% | 0.4% |
| Virginia | 1/18/21 | 76 | -82% | 2.6% |
| U.S. Virgin Islands | 3/28/21 | 7 | -100% | 0.0% |
| Vermont | 4/2/21 | 2 | -3% | 0.2% |

Days since Daily Case Peak: **Longer = Good**



Powered by Bing
© GeoNames, Microsoft, TomTom

Daily Cases % off the Peak: **Larger Decline = Good**



Powered by Bing
© GeoNames, Microsoft, TomTom

#7: US New Cases by States... (sorted by today's new cases)

Sorted

7D Ago Last 3-day Trend

MN, LA, KY, OH, SC, SD, MA are not reporting on Sunday April 4 in observance of the holidays...

| | 3/28/21 | 4/2/21 | 4/3/21 | 4/4/21 | vs 7D ago |
|----------------|---------|--------|--------|--------|-----------|
| United States | 44,028 | 66,155 | 63,979 | 37,238 | -6,790 |
| States: | | | | | |
| New York | 9,395 | 7,787 | 7,846 | 7,467 | |
| Florida | 4,943 | 6,490 | 6,017 | 4,794 | |
| Pennsylvania | 46 | 4,656 | 5,343 | 3,933 | <--higher |
| New Jersey | 3,890 | 3,933 | 3,756 | 3,281 | |
| Illinois | 2,250 | 3,235 | 2,839 | 2,449 | |
| California | 2,998 | 2,414 | 4,877 | 2,400 | |
| Maryland | 1,335 | 1,457 | 1,275 | 1,669 | <--higher |
| Texas | 1,918 | 2,528 | 1,250 | 1,465 | |
| Virginia | 1,392 | 1,538 | 1,542 | 1,267 | |
| Colorado | 957 | 1,645 | 1,571 | 1,220 | <--higher |
| Indiana | 944 | 1,203 | 1,049 | 945 | |
| Georgia | 748 | 1,143 | 770 | 653 | |
| Wisconsin | 428 | 875 | 706 | 584 | <--higher |
| Puerto Rico | 237 | 328 | 623 | 470 | <--higher |
| Arizona | 554 | 940 | 706 | 464 | |
| Oregon | 250 | 489 | 467 | 402 | <--higher |
| New Hampshire | 282 | 471 | 438 | 398 | <--higher |
| West Virginia | 297 | 420 | 453 | 350 | |
| Utah | 389 | 422 | 447 | 344 | |
| Iowa | 380 | 470 | 376 | 332 | |
| Delaware | 361 | 402 | 487 | 299 | |
| Maine | 197 | 401 | 279 | 295 | <--higher |
| Missouri | 263 | 540 | 327 | 279 | |
| Nevada | 143 | 342 | 462 | 260 | <--higher |
| Vermont | 197 | 232 | 150 | 244 | <--higher |
| Nebraska | 306 | 1,343 | 331 | 242 | |
| Alabama | 319 | 400 | 349 | 194 | |
| Montana | 31 | 128 | 182 | 107 | <--higher |

Sorted

7D Ago Last 3-day Trend

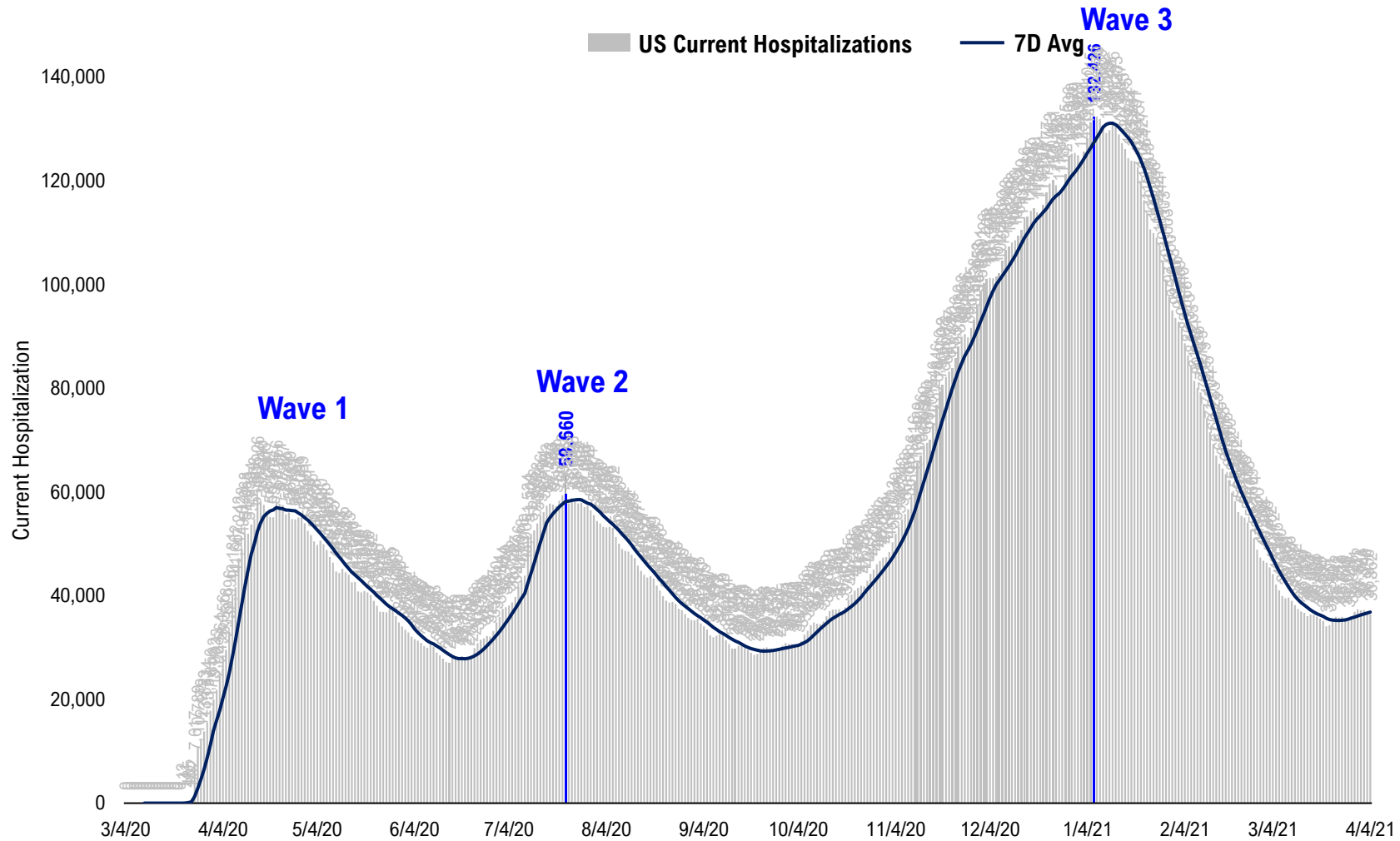
MN, LA, KY, OH, SC, SD, MA are not reporting on Sunday April 4 in observance of the holidays...

| | 3/28/21 | 4/2/21 | 4/3/21 | 4/4/21 | vs 7D ago |
|--------------------------|---------|--------|--------|--------|-----------|
| United States | 44,028 | 66,155 | 63,979 | 37,238 | -6,790 |
| States: | | | | | |
| District of Columbia | 124 | 151 | 125 | 105 | |
| Mississippi | 196 | 284 | 290 | 97 | |
| Hawaii | 102 | 133 | 112 | 96 | |
| Arkansas | 57 | 89 | 144 | 72 | <--higher |
| North Dakota | 47 | 161 | 117 | 61 | <--higher |
| Wyoming | 0 | 58 | 0 | 0 | |
| Washington | 0 | 1,194 | 1,053 | 0 | |
| U.S. Virgin Islands | 6 | 0 | 0 | 0 | |
| Tennessee | 1,612 | 0 | 0 | 0 | |
| South Dakota | 163 | 197 | 175 | 0 | |
| South Carolina | 1,085 | 1,350 | 1,243 | 0 | |
| Rhode Island | 0 | 407 | 0 | 0 | |
| Oklahoma | 0 | 372 | 0 | 0 | |
| Ohio | 1,019 | 1,677 | 2,293 | 0 | |
| New Mexico | 161 | 207 | 0 | 0 | |
| North Carolina | 0 | 0 | 0 | 0 | |
| Northern Mariana Islands | 0 | 0 | 0 | 0 | |
| Minnesota | 1,225 | 2,536 | 2,064 | 0 | |
| Michigan | 0 | 5,498 | 8,413 | 0 | |
| Massachusetts | 1,975 | 2,440 | 2,453 | 0 | |
| Louisiana | 448 | 0 | 0 | 0 | |
| Kentucky | 358 | 685 | 579 | 0 | |
| Kansas | 0 | 501 | 0 | 0 | |
| Idaho | 0 | 284 | 0 | 0 | |
| Guam | 0 | 16 | 0 | 0 | |
| Connecticut | 0 | 1,488 | 0 | 0 | |
| American Samoa | 0 | 0 | 0 | 0 | |
| Alaska | 0 | 195 | 0 | 0 | |

<--higher – if the state has 20% more daily cases than 7D ago...
Source: Fundstrat, COVID-19 Tracking Project, State Department of Health

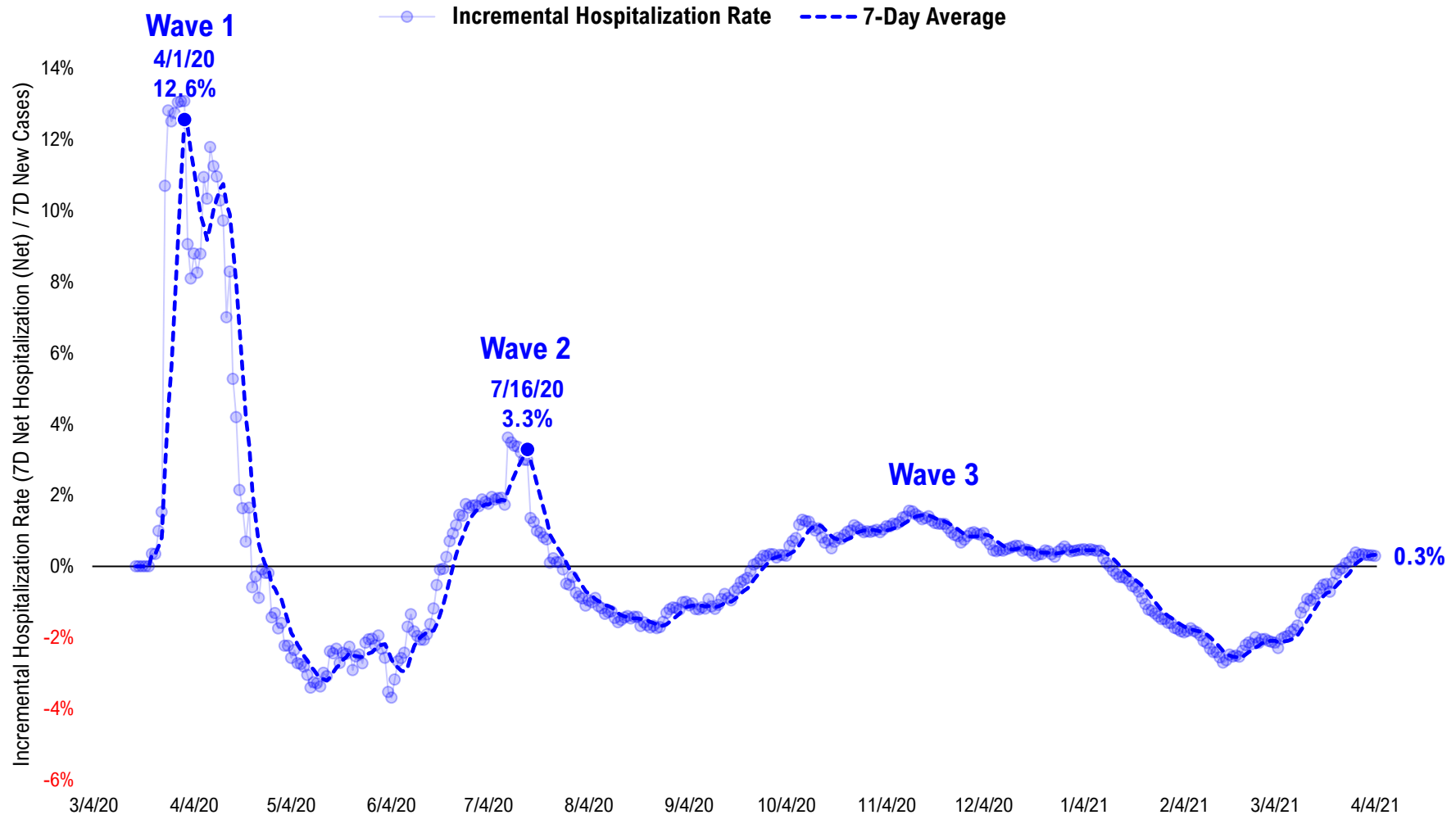
#8: US Daily Hospitalizations...

US Net Hospitalizations (aggregate of 50 states + Washington, D.C.)



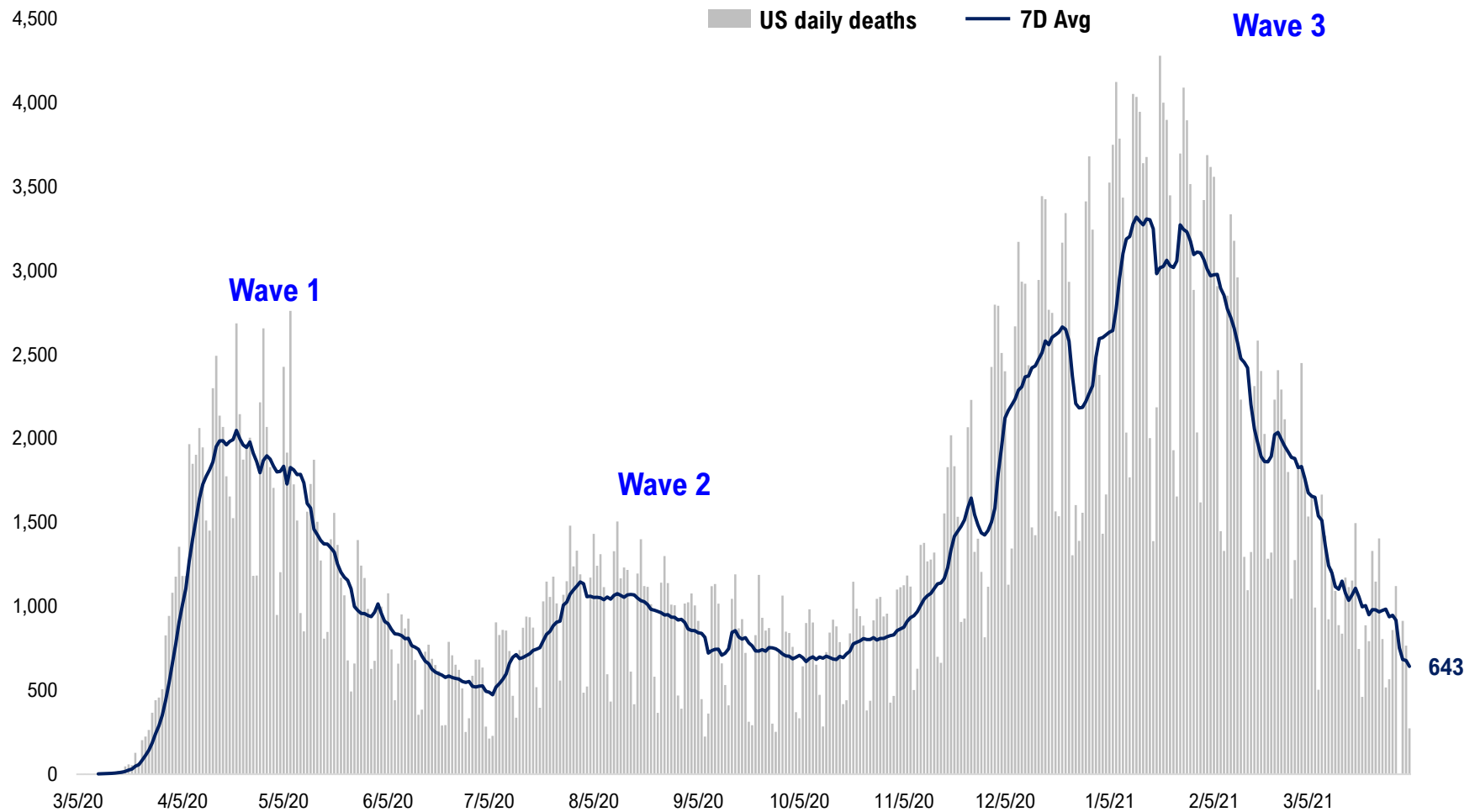
#9: Incremental Hospitalization Rate...

Incremental Hospitalization Rate: 7D Net Hospitalizations / 7D Total New Cases
(aggregate of 50 states + Washington, D.C.)

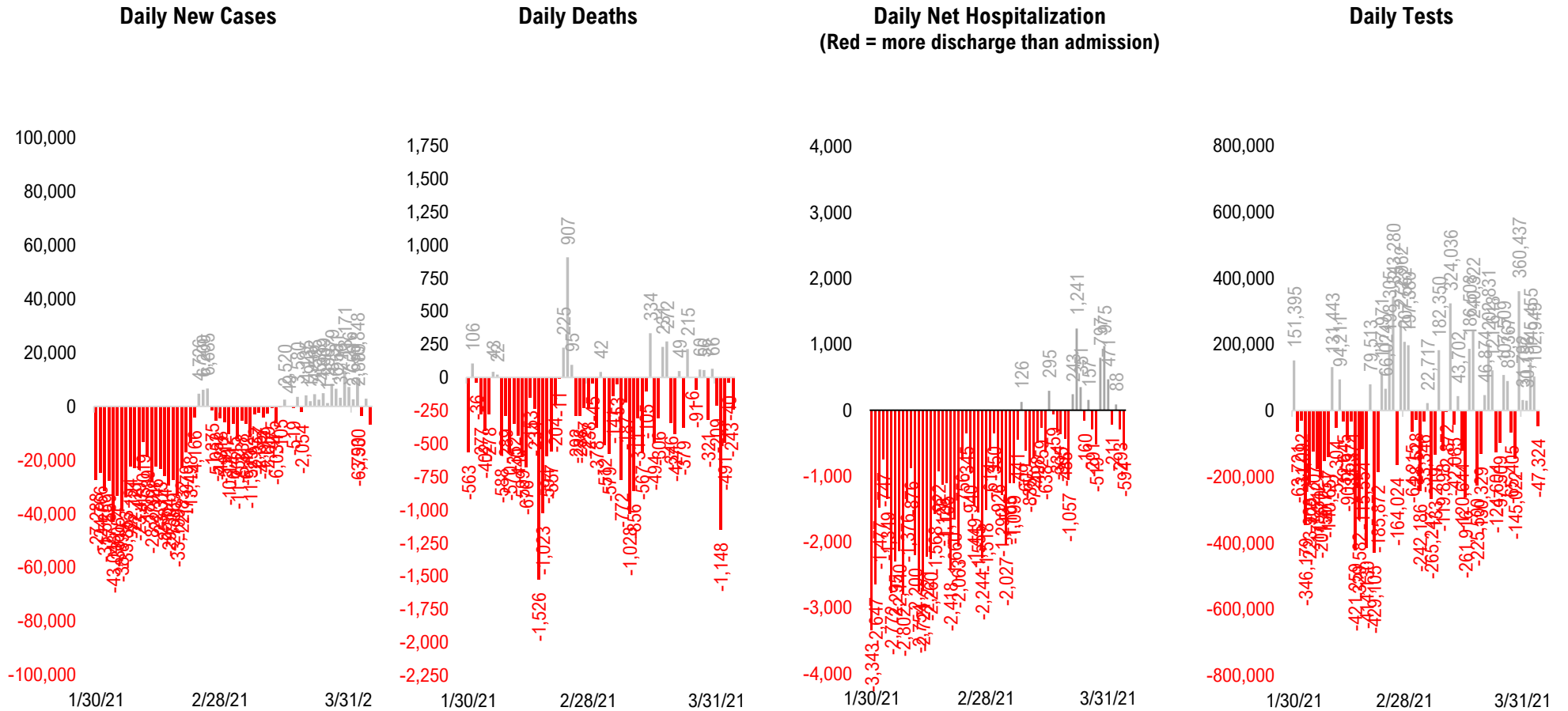


#10: US Daily New Fatalities...

US daily COVID-19 Fatalities

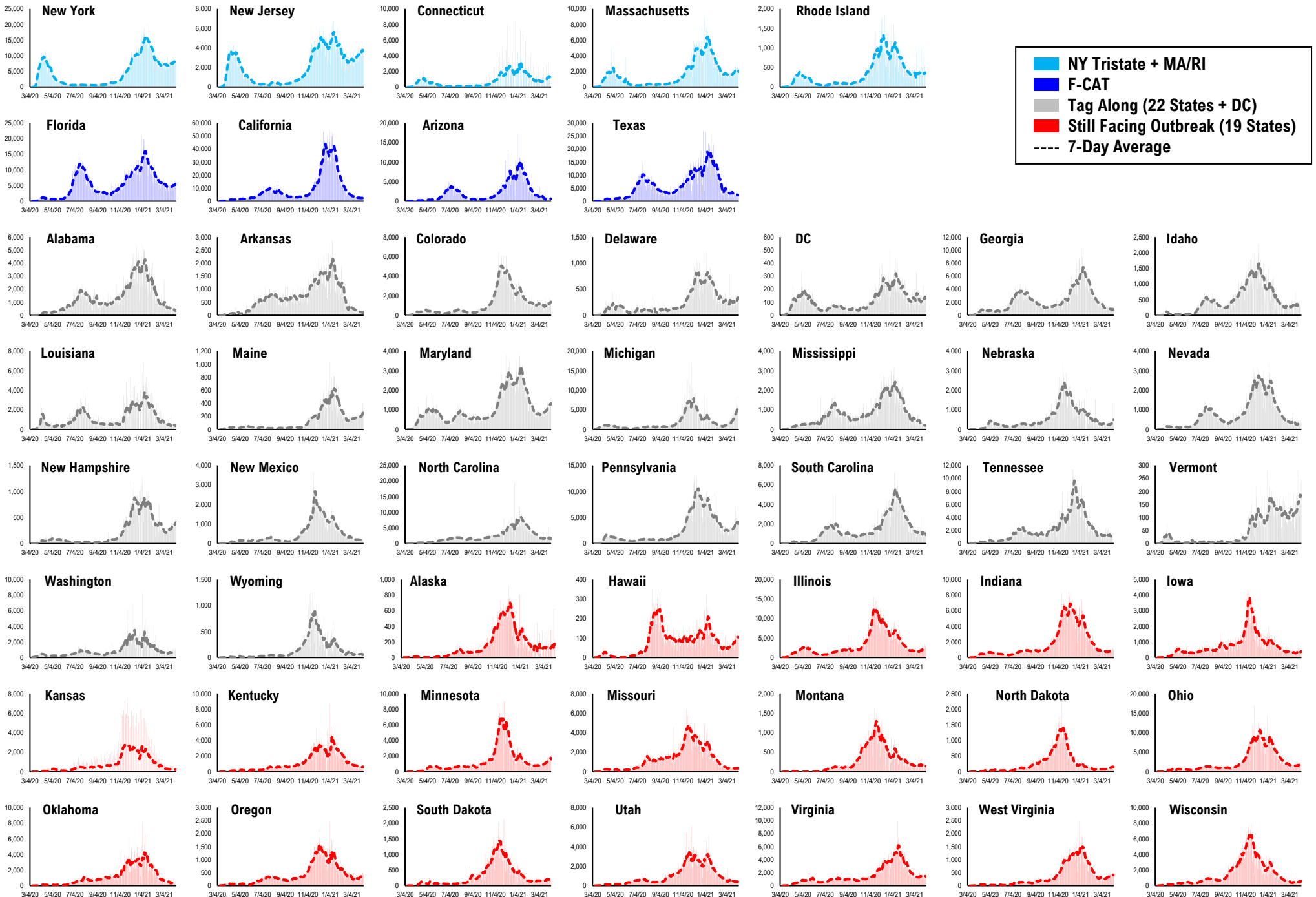


#11: Rolling 7-Day Change in the Key Metrics... (Past 8 Weeks)

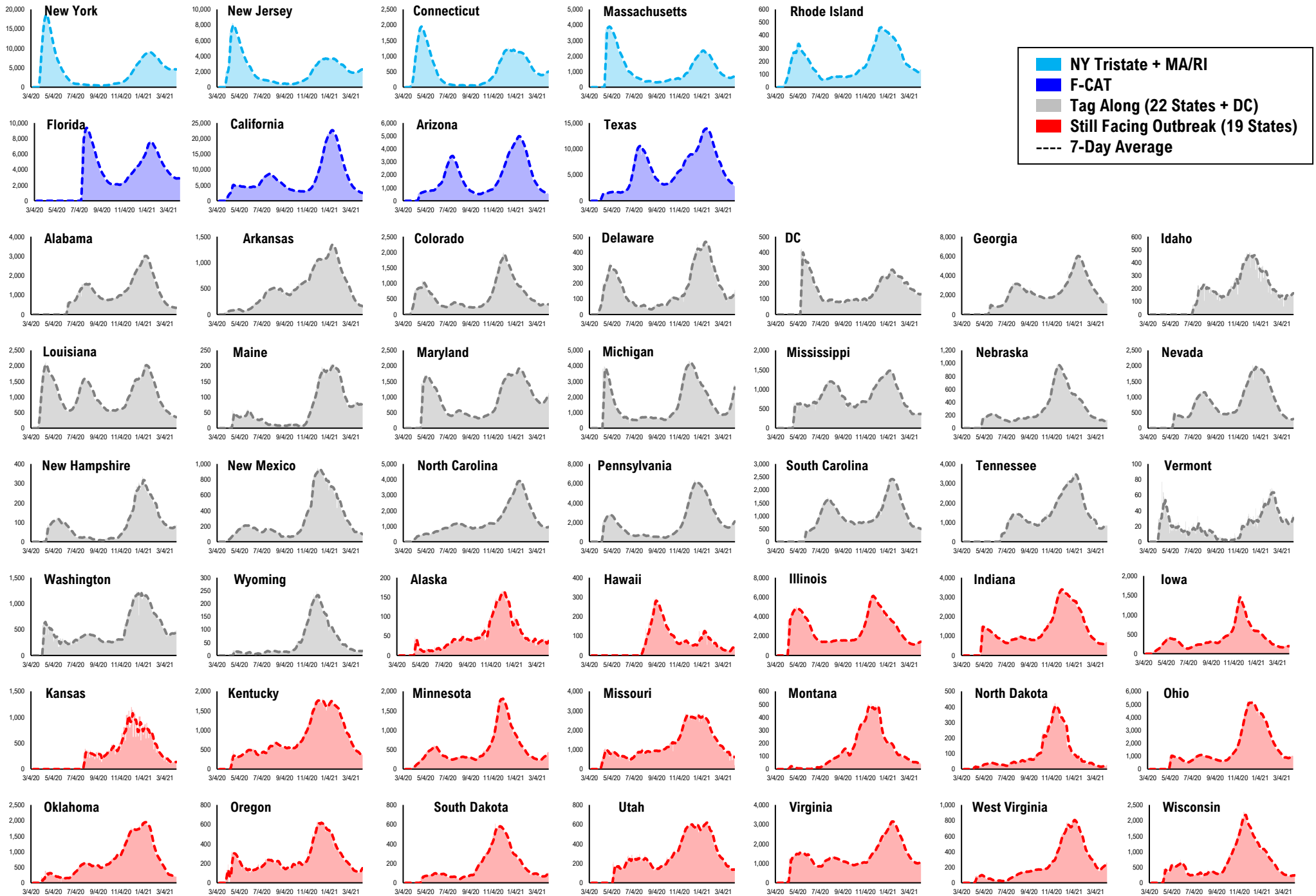


* Ignored California between 8/10 and 8/23, due to its data glitch caused 300,000-case backlog
Source: Fundstrat, COVID-19 Tracking Project, State Department of Health

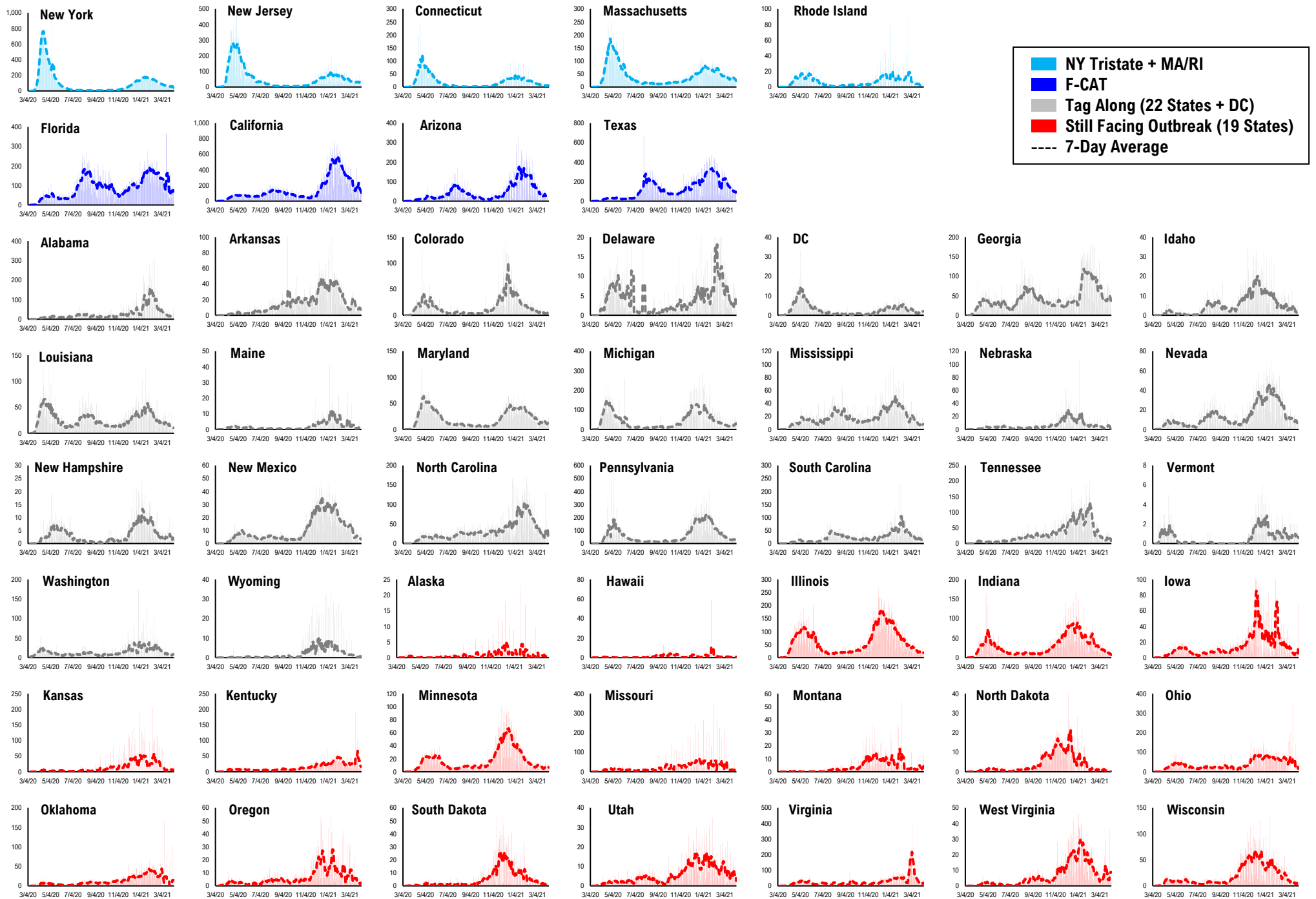
#12: Daily New Cases by States...



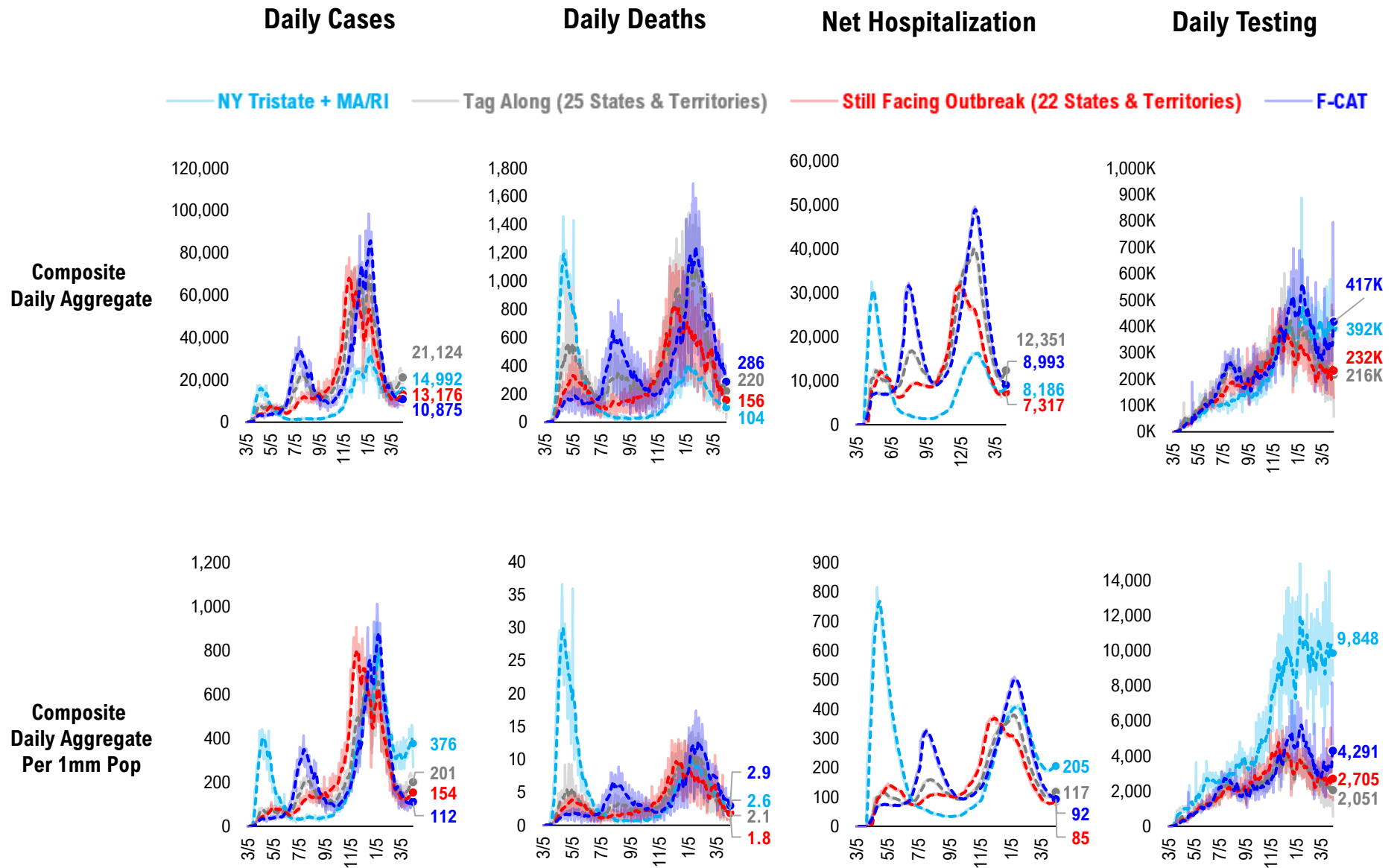
#13: Current Hospitalizations by States...



#14: Daily New Deaths by States...

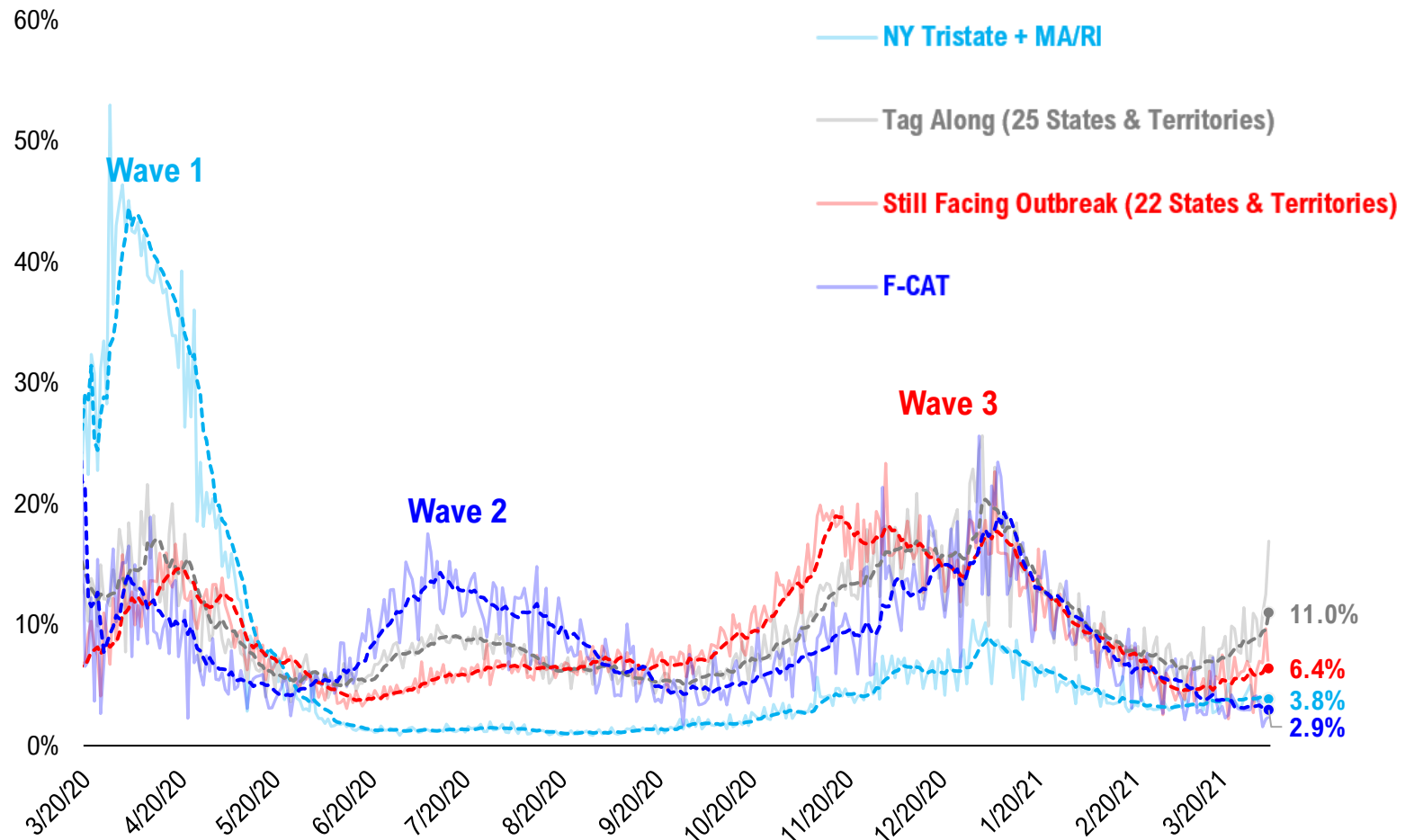


#15: State COVID-19 situation by Tier...

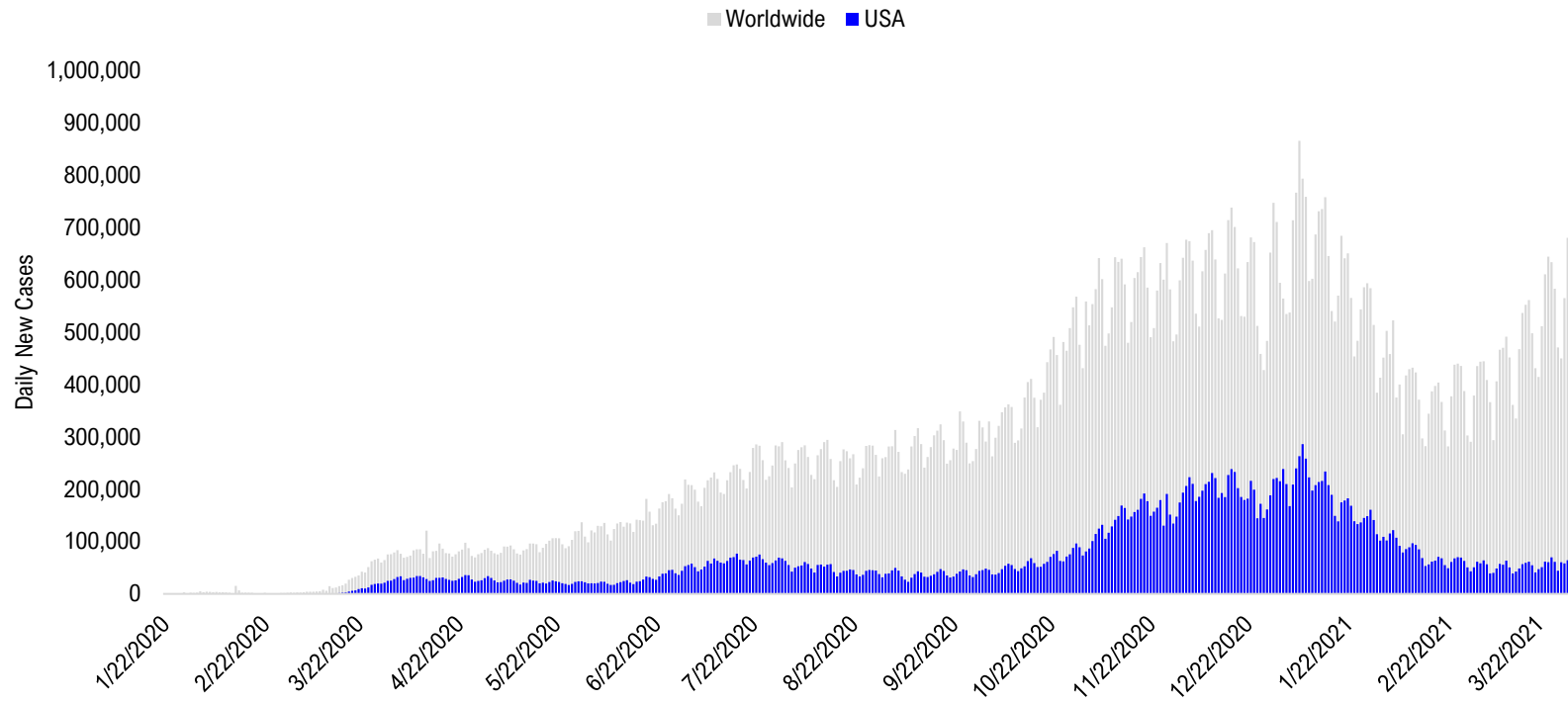


#16: State COVID-19 Daily Positivity Rate by Tier...

Composite Daily Positivity Rate



#17: Global COVID-19 Situation at a Glance...



| Nov 13 | Nov 27 | Dec 11 | Dec 25 | Jan 8 | Jan 22 | Feb 5 | Feb 19 | Mar 5 | Mar 19 | Apr 3 |
|--|--|--|--|--|--|--|--|--|--|--|
| Europe 279,145 | Europe 241,638 | Europe 240,597 | Europe 235,134 | Europe 253,225 | Europe 215,947 | Europe 171,879 | Europe 136,398 | Europe 159,160 | Europe 203,932 | Europe 239,119 |
| US + Canada 138,952 | US + Canada 169,379 | US + Canada 210,059 | US + Canada 192,649 | US + Canada 239,474 | US + Canada 180,145 | US + Canada 118,696 | Latin America 81,969 | Latin America 92,091 | Latin America 112,087 | Latin America 116,154 |
| Latin America 58,452 | Latin America 65,408 | Latin America 77,754 | Latin America 83,629 | Latin America 95,580 | Latin America 116,932 | Latin America 95,221 | US + Canada 68,407 | US + Canada 58,634 | US + Canada 54,412 | Pakistan + India + Bangladesh 83,668 |
| Pakistan + India + Bangladesh 47,942 | Pakistan + India + Bangladesh 48,091 | Pakistan + India + Bangladesh 36,327 | Pakistan + India + Bangladesh 26,900 | Africa 28,432 | Asia ex- India+Pakistan 26,862 | Asia ex- India+Pakistan 24,436 | Asia ex- India+Pakistan 17,226 | Pakistan + India + Bangladesh 17,965 | Pakistan + India + Bangladesh 36,253 | US + Canada 66,768 |
| Asia ex- India+Pakistan 13,963 | Asia ex- India+Pakistan 15,707 | Asia ex- India+Pakistan 16,852 | Africa 22,109 | Pakistan + India + Bangladesh 21,150 | Africa 25,790 | Africa 15,433 | Pakistan + India + Bangladesh 13,652 | Asia ex- India+Pakistan 13,960 | Asia ex- India+Pakistan 16,169 | Asia ex- India+Pakistan 22,776 |
| Africa 13,421 | Africa 13,326 | Africa 15,657 | Asia ex- India+Pakistan 18,034 | Asia ex- India+Pakistan 20,638 | Pakistan + India + Bangladesh 16,471 | Pakistan + India + Bangladesh 13,449 | Africa 11,086 | Africa 9,369 | Africa 10,204 | Africa 12,183 |

Disclosures

This research is for the clients of FS Insight only. For important disclosures and rating histories regarding sectors or companies that are the subject of this report, please contact your sales representative or FS Insight at 150 East 52nd Street, New York, NY, 10022 USA.

Analyst Certification (Reg AC)

Thomas J. Lee, the research analyst denoted by an “AC” on the cover of this report, hereby certifies that all of the views expressed in this report accurately reflect his personal views, which have not been influenced by considerations of the firm’s business or client relationships.

Neither I, nor a member of my household is an officer, director, or advisory board member of the issuer(s) or has another significant affiliation with the issuer(s) that is/are the subject of this research report. There is a possibility that we will from time to time have long or short positions in, and buy or sell, the securities or derivatives, if any, referred to in this research

Conflicts of Interest

This research contains the views, opinions and recommendations of FS Insight . As of the time of writing and publication of this presentation, FS Insight does not know of, or have reason to know of any material conflicts of interest at the time of the publication of this presentation. The Company has no contractual relationship, nor have we received any compensation from any of the companies listed in this research report.

Analyst Industry/Sector Views

Positive (+): The analyst expects the performance of his industry/sector coverage universe over the next 6-18 months to be attractive vs. the relevant broad market benchmark, being the S&P 500 for North America.

Neutral (N): The analyst expects the performance of his or her industry/sector coverage universe over the next 6-18 months to be in line with the relevant broad market benchmark, being the S&P 500 for North America.

Negative (-): The analyst expects his or her industry coverage universe over the next 6-18 months to underperform vs. the relevant broad market benchmark, being the S&P 500 for North America.

General Disclosures

FS Insight is an independent research company and is not a registered investment advisor and is not acting as a broker dealer under any federal or state securities laws. FS Insight is a member of IRC Securities’ Research Prime Services Platform. IRC Securities is a FINRA registered broker-dealer that is focused on supporting the independent research industry. Certain personnel of FS Insight (i.e. Research Analysts) are registered representatives of IRC Securities, a FINRA member firm registered as a broker-dealer with the Securities and Exchange Commission and certain state securities regulators. As registered representatives and independent contractors of IRC Securities, such personnel may receive commissions paid to or shared with IRC Securities for transactions placed by FS Insight clients directly with IRC Securities or with securities firms that may share commissions with IRC Securities in accordance with applicable SEC and FINRA requirements. IRC Securities does not distribute the research of FS Insight , which is available to select institutional clients that have engaged FS Insight .

As registered representatives of IRC Securities our analysts must follow IRC Securities’ Written Supervisory Procedures. Notable compliance policies include (1) prohibition of insider trading or the facilitation thereof, (2) maintaining client confidentiality, (3) archival of electronic communications, and (4) appropriate use of electronic communications, amongst other compliance related policies.

FS Insight does not have the same conflicts that traditional sell-side research organizations have because FS Insight (1) does not conduct any investment banking activities, (2) does not manage any investment funds, and (3) our clients are only institutional investors.

This research is for the clients of FS Insight only. Additional information is available upon request. Information has been obtained from sources believed to be reliable but FS Insight does not warrant its completeness or accuracy except with respect to any disclosures relative to FS Insight and the analyst’s involvement (if any) with any of the subject companies of the research. All pricing is as of the market close for the securities discussed, unless otherwise stated. Opinions and estimates constitute our judgment as of the date of this material and are subject to change without notice. Past performance is not indicative of future results. This material is not intended as an offer or solicitation for the purchase or sale of any financial instrument. The opinions and recommendations herein do not take into account individual client circumstances, risk tolerance, objectives, or needs and are not intended as recommendations of particular securities, financial instruments or strategies. The recipient of this report must make its own independent decision regarding any securities or financial instruments mentioned herein. Except in circumstances where FS Insight expressly agrees otherwise in writing, FS Insight is not acting as a municipal advisor and the opinions or views contained herein are not intended to be, and do not constitute, advice, including within the meaning of Section 15B of the Securities Exchange Act of 1934. All research reports are disseminated and available to all clients simultaneously through electronic publication to our internal client website, FS Insight .com. Not all research content is redistributed to our clients or made available to third-party aggregators or the media. Please contact your sales representative if you would like to receive any of our research publications.

Copyright 2021 FS Insight LLC. All rights reserved. No part of this material may be reprinted, sold or redistributed without the prior written consent of FS Insight LLC.