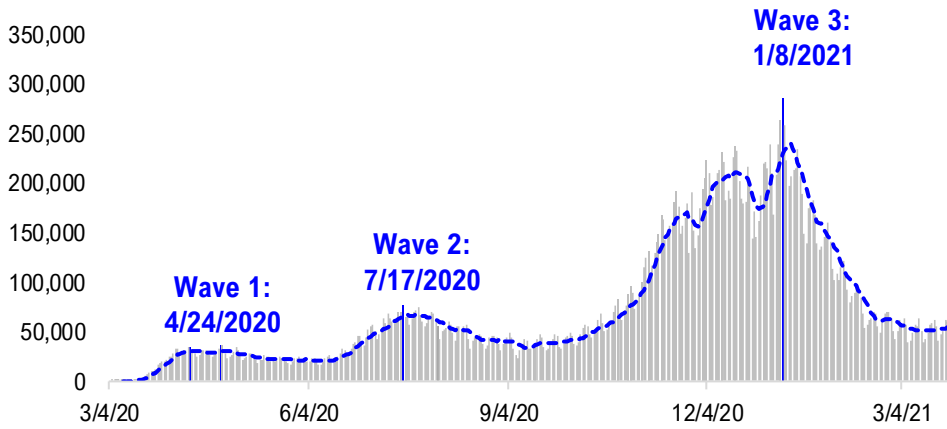


FSInsight Daily COVID-19 Chartbook

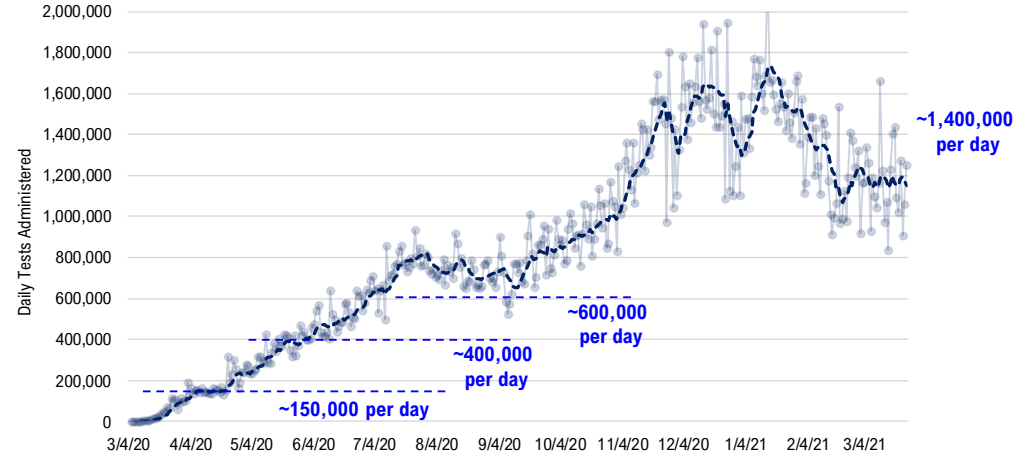


#1: USA COVID-19 Situation at a Glance...

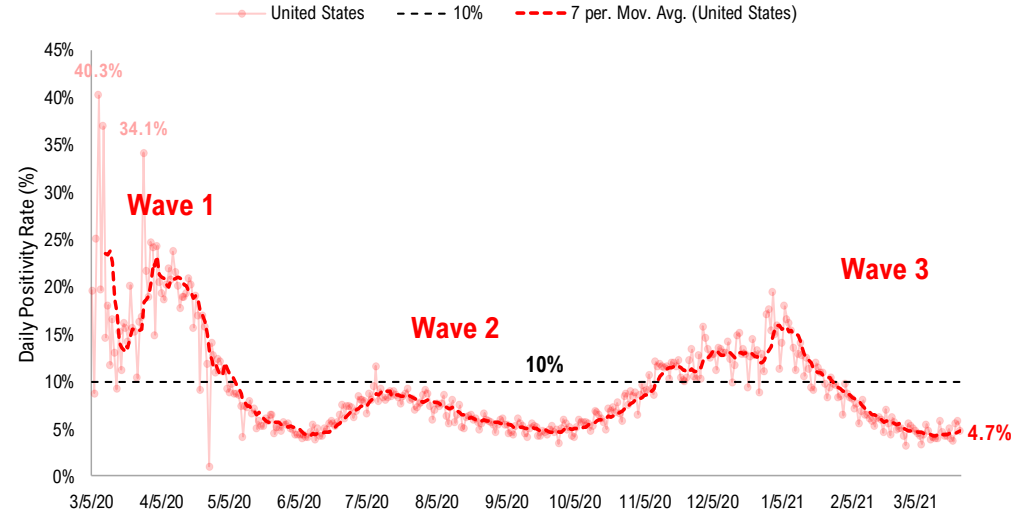
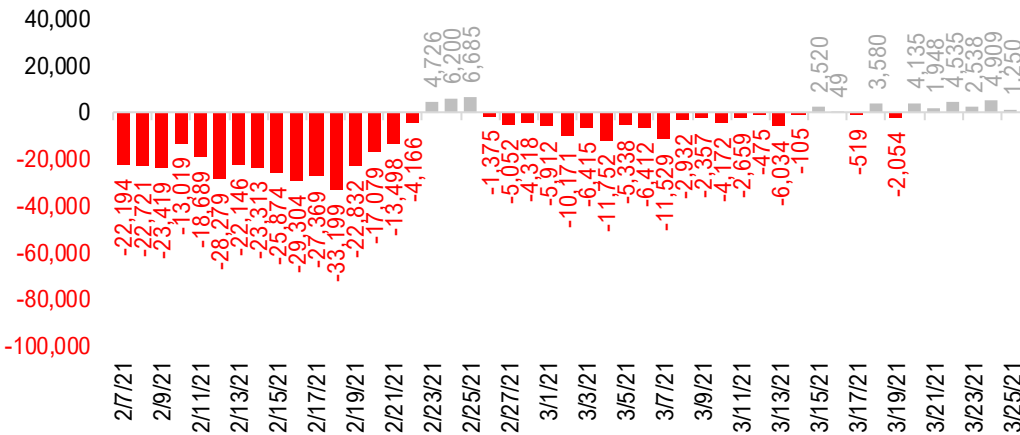
US daily new cases



USA total COVID-19 tests administered

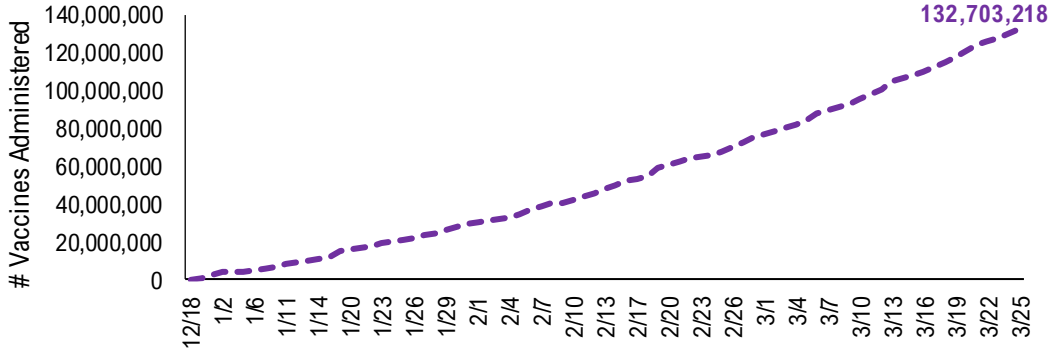


US daily new cases rolling 7D delta

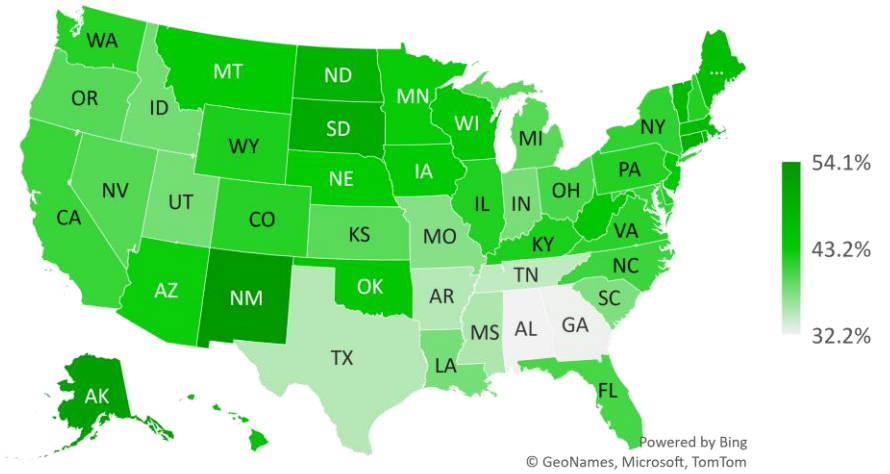


#2: USA COVID-19 Vaccination Progress at a Glance...

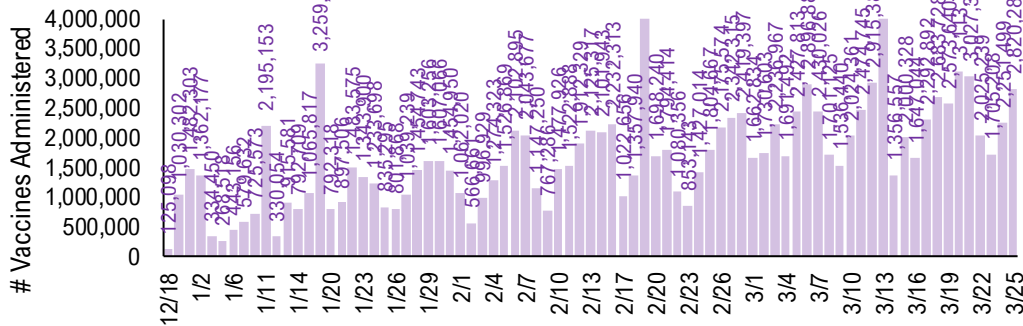
Cumulative Vaccines Administered



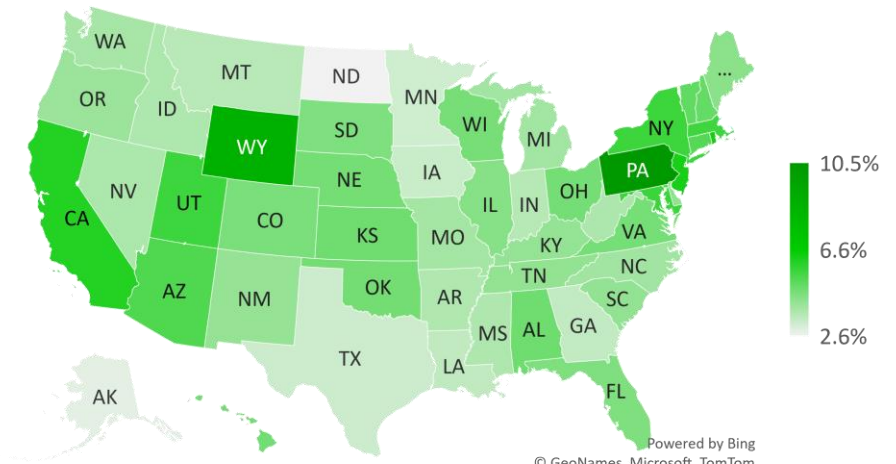
Cumulative Vaccines Administered as % State Population



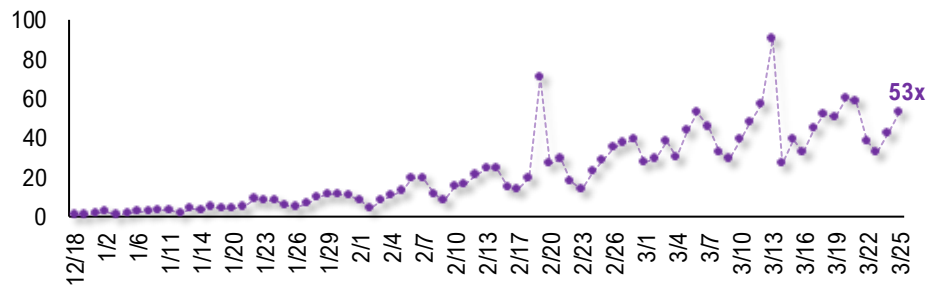
Daily Vaccines Administered



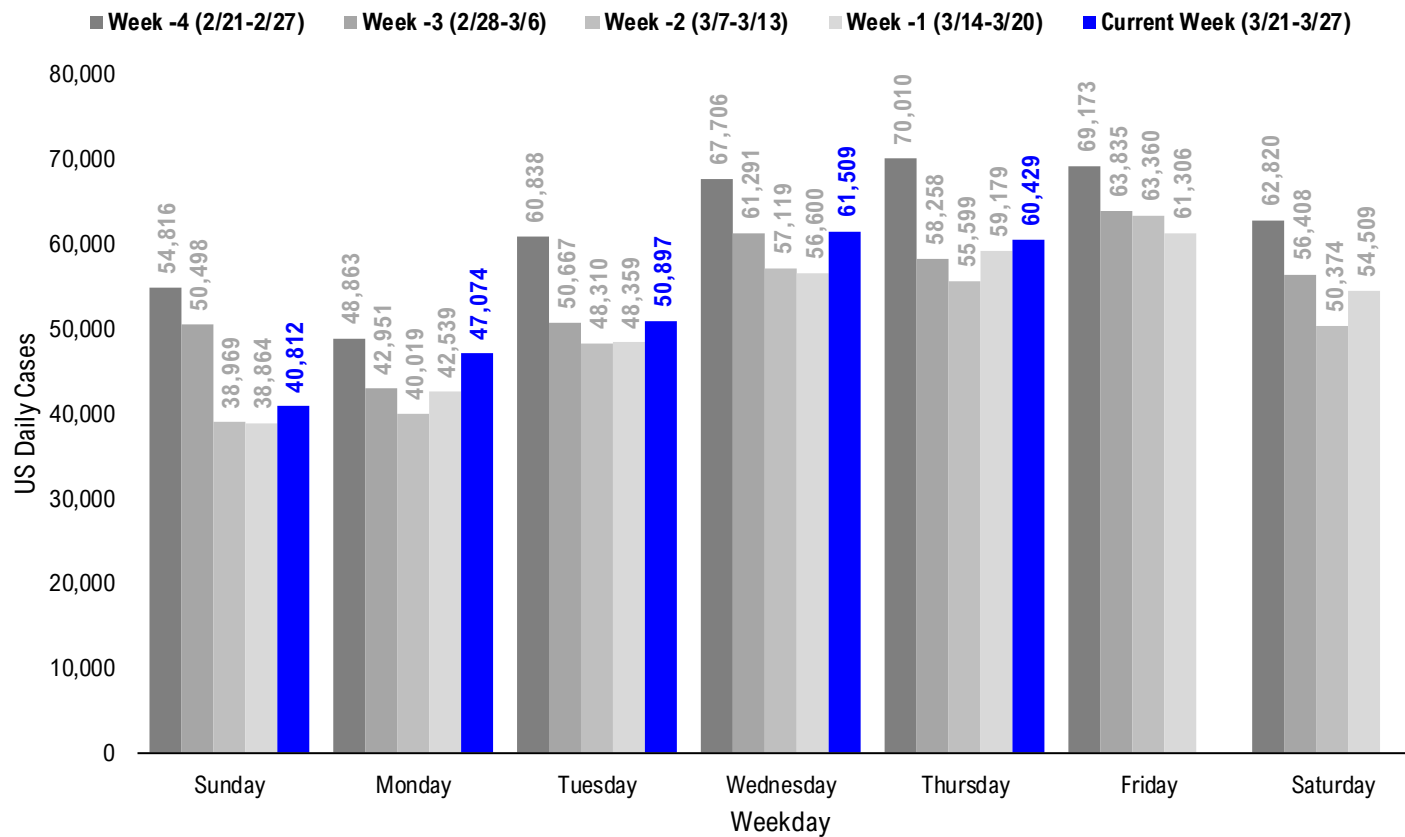
Implied Weekly Vaccines Administered as % State Population



Daily Vaccinations / Daily Cases (7D Avg)



#3: USA COVID-19 Daily Cases Weekday Seasonality (Past 4 Weeks) ...



#4: USA State COVID-19 Situation at a Glance...

	Sorted Daily Cases		Daily Cases (3D avg) per 1mm residents				Since Peak		Hospitalization		
	% US Pop	% US GDP	3/25	7D Delta	3/25	7D Delta	# Days	% Decline in Daily Cases	7D Net Hospitalization	7D Net Hospitalization / 7D New Cases	
	United States	100%	100%	60.429	+1.250	176	+9	75	-79%	-527	-0.1%

	Sorted Daily Cases		Daily Cases (3D avg) per 1mm residents				Since Peak		Hospitalization		
	% US Pop	% US GDP	3/25	7D Delta	3/25	7D Delta	# Days	% Decline in Daily Cases	7D Net Hospitalization	7D Net Hospitalization / 7D New Cases	
	United States	100%	100%	60.429	+1.250	176	+9	75	-79%	-527	-0.1%

States:

1	New York	5.9%	8.1%	8,081	+285	380	-19	75	-59%	64	0.1%
2	Florida	6.5%	5.0%	5,773	+680	252	+27	76	-72%	-69	(0.2%)
3	Michigan	3.0%	2.6%	5,224	+2,595	442	+181	127	-49%	621	2.5%
4	Pennsylvania	3.9%	3.8%	3,623	+497	307	+67	110	-67%	231	1.0%
5	New Jersey	2.7%	3.0%	3,421	-314	373	-14	75	-46%	198	0.9%
6	Massachusetts	2.1%	2.8%	2,410	+469	307	+72	75	-72%	39	0.3%
7	California	11.9%	14.6%	2,251	-787	51	-6	74	-96%	-630	(3.5%)
8	Illinois	3.8%	4.2%	2,190	-135	179	+22	132	-83%	131	0.9%
9	Texas	8.7%	8.8%	2,167	-1,590	93	-45	77	-88%	-436	(2.7%)
10	North Carolina	3.2%	2.7%	2,112	+108	168	+6	75	-84%	-50	(0.4%)
11	Minnesota	1.7%	1.8%	1,857	+361	238	+46	115	-83%	#VALUE!	
12	Virginia	2.6%	2.6%	1,559	-523	168	-15	66	-82%	-31	(0.3%)
13	Tennessee	2.1%	1.8%	1,519	+858	213	+26	97	-86%	154	1.6%
14	Ohio	3.5%	3.3%	1,501	-603	142	-13	105	-86%	58	0.6%
15	Connecticut	1.1%	1.3%	1,489	+333	359	+137	71	-74%	50	0.6%
16	Maryland	1.8%	2.0%	1,382	+269	181	+32	74	-70%	121	1.7%
17	Colorado	1.7%	1.8%	1,373	+131	229	+102	124	-78%	-26	(0.3%)
18	Georgia	3.2%	2.9%	1,185	-68	96	-13	74	-88%	-152	(2.2%)
19	Indiana	2.0%	1.8%	952	-6	128	+8	110	-89%	15	0.3%
20	Washington	2.3%	2.7%	941	+230	94	+10	120	-83%	-2	(0.0%)
21	Kentucky	1.3%	1.0%	720	-57	171	-18	76	-85%	-117	(2.7%)
22	Wisconsin	1.8%	1.6%	537	+47	95	+22	132	-93%	19	0.6%
23	Utah	1.0%	0.9%	527	-33	153	-28	76	-88%	-55	(1.9%)
24	New Hampshire	0.4%	0.4%	518	+183	316	+98	80	-61%	7	0.3%
25	Rhode Island	0.3%	0.3%	483	+51	394	+38	110	-75%	-15	(0.6%)
26	Iowa	1.0%	0.9%	470	+73	144	+34	132	-89%	36	1.5%
27	Missouri	1.8%	1.5%	448	-30	65	-4	131	-92%	-75	(3.2%)
28	Nevada	0.9%	0.8%	444	+147	91	-12	75	-91%	-58	(3.3%)

States:

29	West Virginia	0.5%	0.4%	433	+51	214	+21	81	-80%	27	1.1%
30	Alabama	1.5%	1.1%	427	-145	92	-31	77	-91%	-18	(0.6%)
31	Oregon	1.3%	1.2%	422	+59	87	+21	109	-79%	-14	(0.6%)
32	Louisiana	1.4%	1.3%	407	-151	118	-24	77	-90%	-18	(0.5%)
33	Oklahoma	1.2%	1.0%	369	-190	89	-19	74	-93%	-15	(0.6%)
34	Idaho	0.5%	0.4%	343	-111	210	-18	105	-82%	-4	(0.2%)
35	Mississippi	0.9%	0.6%	317	-5	113	-4	75	-88%	0	0.0%
36	Nebraska	0.6%	0.6%	288	-37	113	-22	126	-92%	-25	(1.5%)
37	Arkansas	0.9%	0.6%	258	+88	56	-6	74	-93%	-64	(3.9%)
38	South Dakota	0.3%	0.3%	254	+17	246	+37	131	-88%	9	0.6%
39	Delaware	0.3%	0.4%	219	-83	208	-69	75	-78%	-5	(0.3%)
40	Maine	0.4%	0.3%	218	-23	136	-21	69	-78%	2	0.1%
41	New Mexico	0.6%	0.5%	216	-35	95	-11	125	-94%	-26	(2.0%)
42	North Dakota	0.2%	0.3%	197	+78	217	+42	131	-91%	5	0.6%
43	Vermont	0.2%	0.2%	187	+46	201	+65	75	-41%	4	0.4%
44	Montana	0.3%	0.2%	164	+32	228	+15	130	-82%	-9	(0.7%)
45	Alaska	0.2%	0.3%	145	-7	244	+51	110	-78%	-8	(0.8%)
46	Arizona	2.2%	1.7%	138	-146	57	+1	81	-97%	-115	(3.4%)
47	Hawaii	0.4%	0.5%	121	+33	52	+4	208	-75%	20	3.6%
48	District of Columbia	0.2%	0.7%	74	-7	135	+8	74	-73%	-3	(0.4%)
49	Puerto Rico	1.0%	0.5%	41	+10	34	+6	96	-90%	38	3.1%
50	Wyoming	0.2%	0.2%	33	+3	109	+22	126	-94%	2	0.5%
51	Northern Mariana	0.0%	0.0%	1	+0	12	-6	149	-83%	0	0.0%
52	U.S. Virgin Islands	0.0%	0.0%	0	+0	0	+0	216	-100%	0	0.0%
53	South Carolina	1.6%	1.1%	0	-1,398	111	-103	74	-92%	-21	(0.3%)
54	Kansas	0.9%	0.8%	0	+0	92	+13	120	-94%	-19	(0.9%)
55	Guam	0.0%	0.0%	0	+0	0	+0	135	-100%	-1	(7.7%)
56	American Samoa	0.0%	0.0%	0	+0	0	+0	0	0%	0	

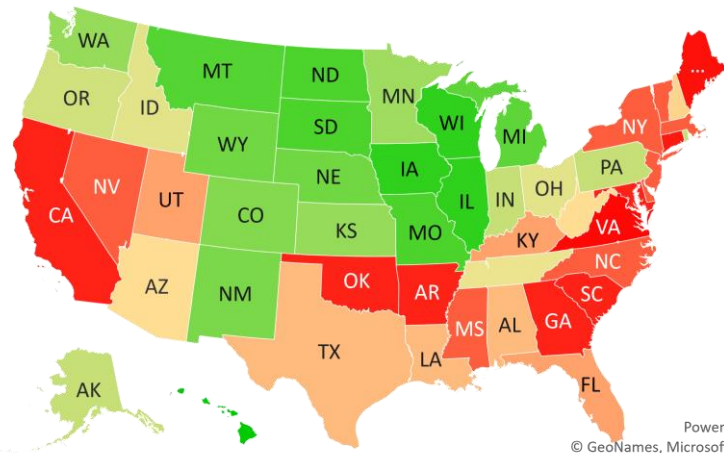
#6: # of Days since Daily Case Peaked by States...

Days since Daily Cases (3D Avg) Peak (as of 3/25)

Sorted				
	Peak Date	3/25/21	% off the Peak	% US Pop
United States	1/9/21	75	-79%	100%
States:				
U.S. Virgin Islands	8/21/20	216	-100%	0.0%
Hawaii	8/29/20	208	-75%	0.4%
Northern Mariana Island	10/27/20	149	-83%	0.0%
Guam	11/10/20	135	-100%	0.0%
Wisconsin	11/13/20	132	-93%	1.8%
Illinois	11/13/20	132	-83%	3.8%
Iowa	11/13/20	132	-89%	1.0%
South Dakota	11/14/20	131	-88%	0.3%
North Dakota	11/14/20	131	-91%	0.2%
Missouri	11/14/20	131	-92%	1.8%
Montana	11/15/20	130	-82%	0.3%
Michigan	11/18/20	127	-49%	3.0%
Wyoming	11/19/20	126	-94%	0.2%
Nebraska	11/19/20	126	-92%	0.6%
New Mexico	11/20/20	125	-94%	0.6%
Colorado	11/21/20	124	-78%	1.7%
Washington	11/25/20	120	-83%	2.3%
Kansas	11/25/20	120	-94%	0.9%
Minnesota	11/30/20	115	-83%	1.7%
Rhode Island	12/5/20	110	-75%	0.3%
Pennsylvania	12/5/20	110	-67%	3.9%
Indiana	12/5/20	110	-89%	2.0%
Alaska	12/5/20	110	-78%	0.2%
Oregon	12/6/20	109	-79%	1.3%
Ohio	12/10/20	105	-86%	3.5%
Idaho	12/10/20	105	-82%	0.5%
Tennessee	12/18/20	97	-86%	2.1%
Puerto Rico	12/19/20	96	-90%	1.0%

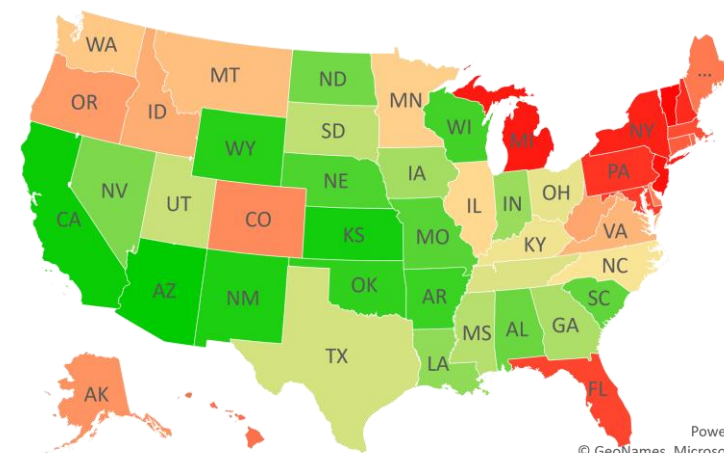
Sorted				
	Peak Date	3/25/21	% off the Peak	% US Pop
United States	1/9/21	75	-79%	100%
States:				
West Virginia	1/3/21	81	-80%	0.5%
Arizona	1/3/21	81	-97%	2.2%
New Hampshire	1/4/21	80	-61%	0.4%
Texas	1/7/21	77	-88%	8.7%
Louisiana	1/7/21	77	-90%	1.4%
Alabama	1/7/21	77	-91%	1.5%
Utah	1/8/21	76	-88%	1.0%
Kentucky	1/8/21	76	-85%	1.3%
Florida	1/8/21	76	-72%	6.5%
Vermont	1/9/21	75	-41%	0.2%
New York	1/9/21	75	-59%	5.9%
Nevada	1/9/21	75	-91%	0.9%
New Jersey	1/9/21	75	-46%	2.7%
North Carolina	1/9/21	75	-84%	3.2%
Mississippi	1/9/21	75	-88%	0.9%
Massachusetts	1/9/21	75	-72%	2.1%
Delaware	1/9/21	75	-78%	0.3%
South Carolina	1/10/21	74	-92%	1.6%
Oklahoma	1/10/21	74	-93%	1.2%
Maryland	1/10/21	74	-70%	1.8%
Georgia	1/10/21	74	-88%	3.2%
District of Columbia	1/10/21	74	-73%	0.2%
California	1/10/21	74	-96%	11.9%
Arkansas	1/10/21	74	-93%	0.9%
Connecticut	1/13/21	71	-74%	1.1%
Maine	1/15/21	69	-78%	0.4%
Virginia	1/18/21	66	-82%	2.6%

Days since Daily Case Peak: **Longer = Good**



Powered by Bing
© GeoNames, Microsoft, TomTom

Daily Cases % off the Peak: **Larger Decline = Good**



Powered by Bing
© GeoNames, Microsoft, TomTom

#7: US New Cases by States... (sorted by today's new cases)

Sorted
7D Ago Last 3-day Trend

SC COVID dashboard is not updated due to technical issue...

	3/18/21	3/23/21	3/24/21	3/25/21	vs 7D ago
United States	59,179	50,897	61,509	60,429	+1,250
States:					
New York	7,796	6,801	7,278	8,081	
Florida	5,093	5,302	5,143	5,773	
Michigan	2,629	3,576	4,454	5,224	<--higher
Pennsylvania	3,126	3,515	4,667	3,623	
New Jersey	3,735	3,397	3,120	3,421	
Massachusetts	1,941	1,821	2,121	2,410	<--higher
California	3,038	1,823	1,955	2,251	
Illinois	2,325	1,832	2,793	2,190	
Texas	3,757	3,205	2,758	2,167	
North Carolina	2,004	1,062	2,098	2,112	
Minnesota	1,496	855	1,310	1,857	<--higher
Virginia	2,082	1,267	1,470	1,559	
Tennessee	661	1,459	1,388	1,519	<--higher
Ohio	2,104	1,628	1,848	1,501	
Connecticut	1,156	898	1,457	1,489	<--higher
Maryland	1,113	722	1,173	1,382	<--higher
Colorado	1,242	1,370	1,216	1,373	
Georgia	1,253	1,045	840	1,185	
Indiana	958	663	967	952	
Washington	711	449	765	941	<--higher
Kentucky	777	878	695	720	
Wisconsin	490	0	1,129	537	
Utah	560	383	562	527	
New Hampshire	335	382	389	518	<--higher
Rhode Island	432	297	471	483	
Iowa	397	306	584	470	
Missouri	478	355	392	448	
Nevada	297	147	246	444	<--higher

Sorted
7D Ago Last 3-day Trend

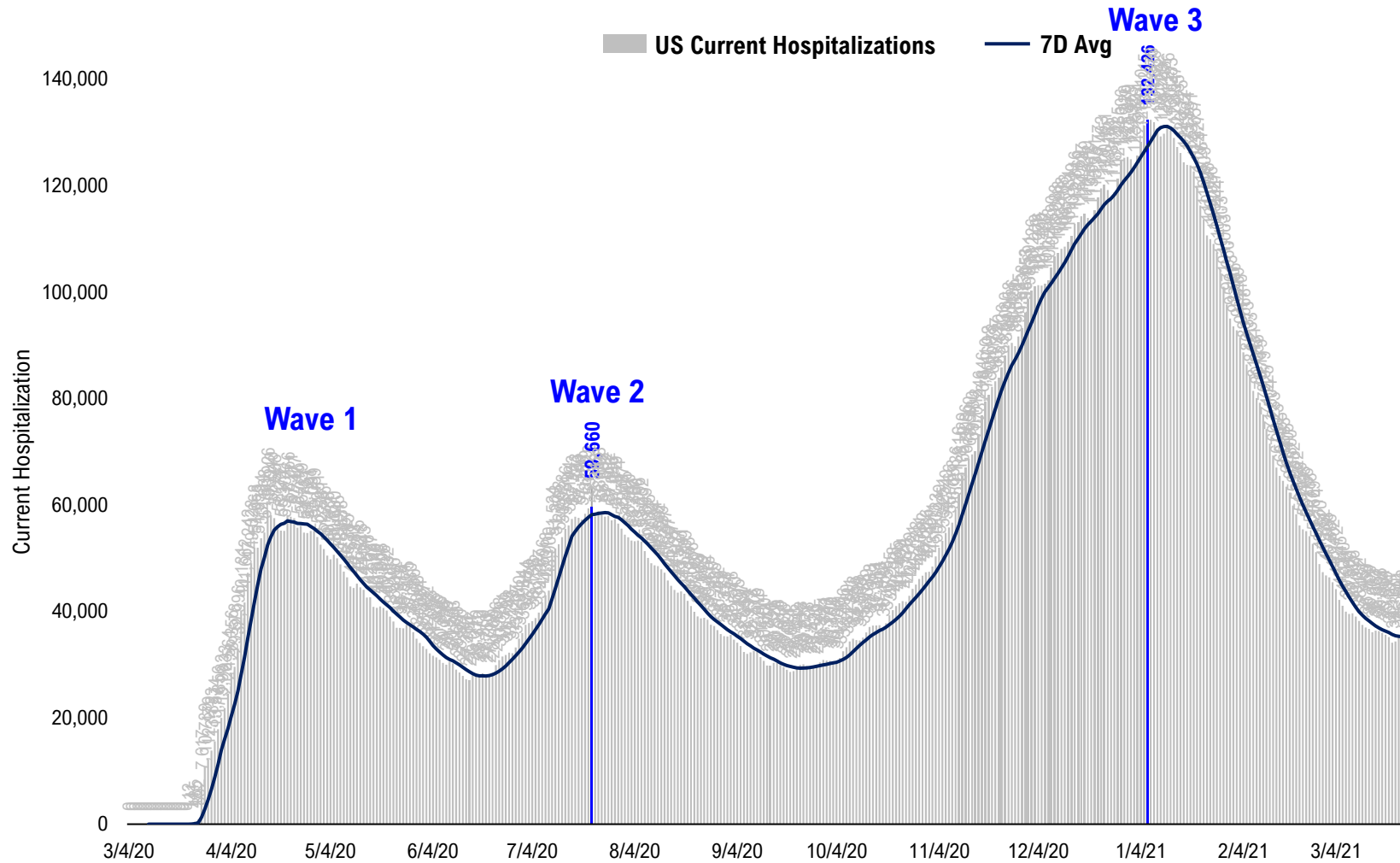
SC COVID dashboard is not updated due to technical issue...

	3/18/21	3/23/21	3/24/21	3/25/21	vs 7D ago
United States	59,179	50,897	61,509	60,429	+1,250
States:					
West Virginia	382	327	389	433	
Alabama	572	10	922	427	
Oregon	363	310	368	422	
Louisiana	558	709	524	407	
Oklahoma	559	184	501	369	
Idaho	454	359	425	343	
Mississippi	322	306	387	317	
Nebraska	325	136	232	288	
Arkansas	170	119	134	258	<--higher
South Dakota	237	128	270	254	
Delaware	302	180	210	219	
Maine	241	131	199	218	
New Mexico	251	171	211	216	
North Dakota	119	164	136	197	<--higher
Vermont	141	94	95	187	<--higher
Montana	132	354	214	164	<--higher
Alaska	152	172	218	145	
Arizona	284	507	605	138	
Hawaii	88	41	58	121	<--higher
District of Columbia	81	105	107	74	
Puerto Rico	31	173	112	41	<--higher
Wyoming	30	69	88	33	
Northern Mariana Islands	1	1	0	1	
U.S. Virgin Islands	0	0	0	0	
South Carolina	1,398	709	1,013	0	
Kansas	0	0	802	0	
Guam	0	0	0	0	
American Samoa	0	0	0	0	

<--higher - if the state has 20% more daily cases than 7D ago...
Source: Fundstrat, COVID-19 Tracking Project, State Department of Health

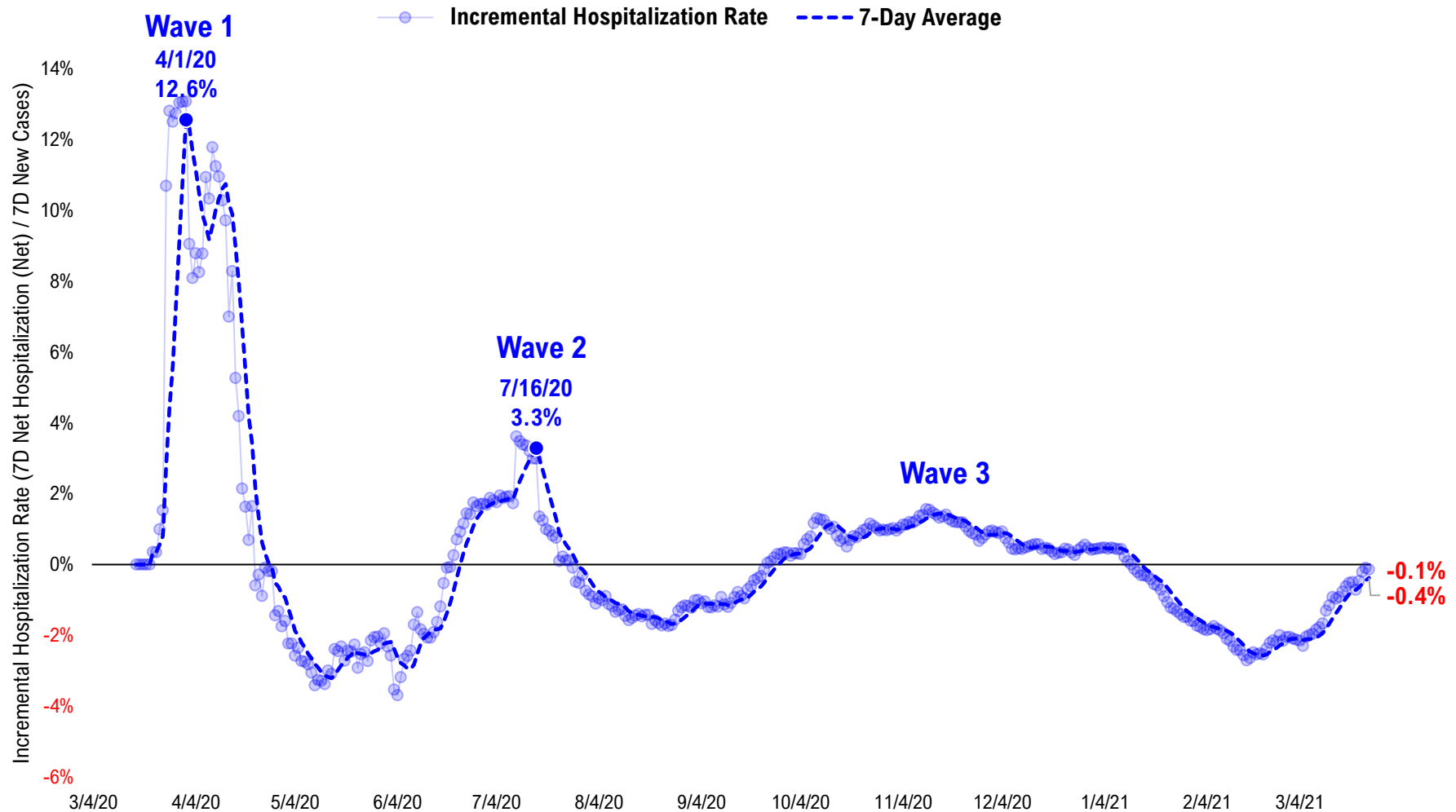
#8: US Daily Hospitalizations...

US Net Hospitalizations (aggregate of 50 states + Washington, D.C.)



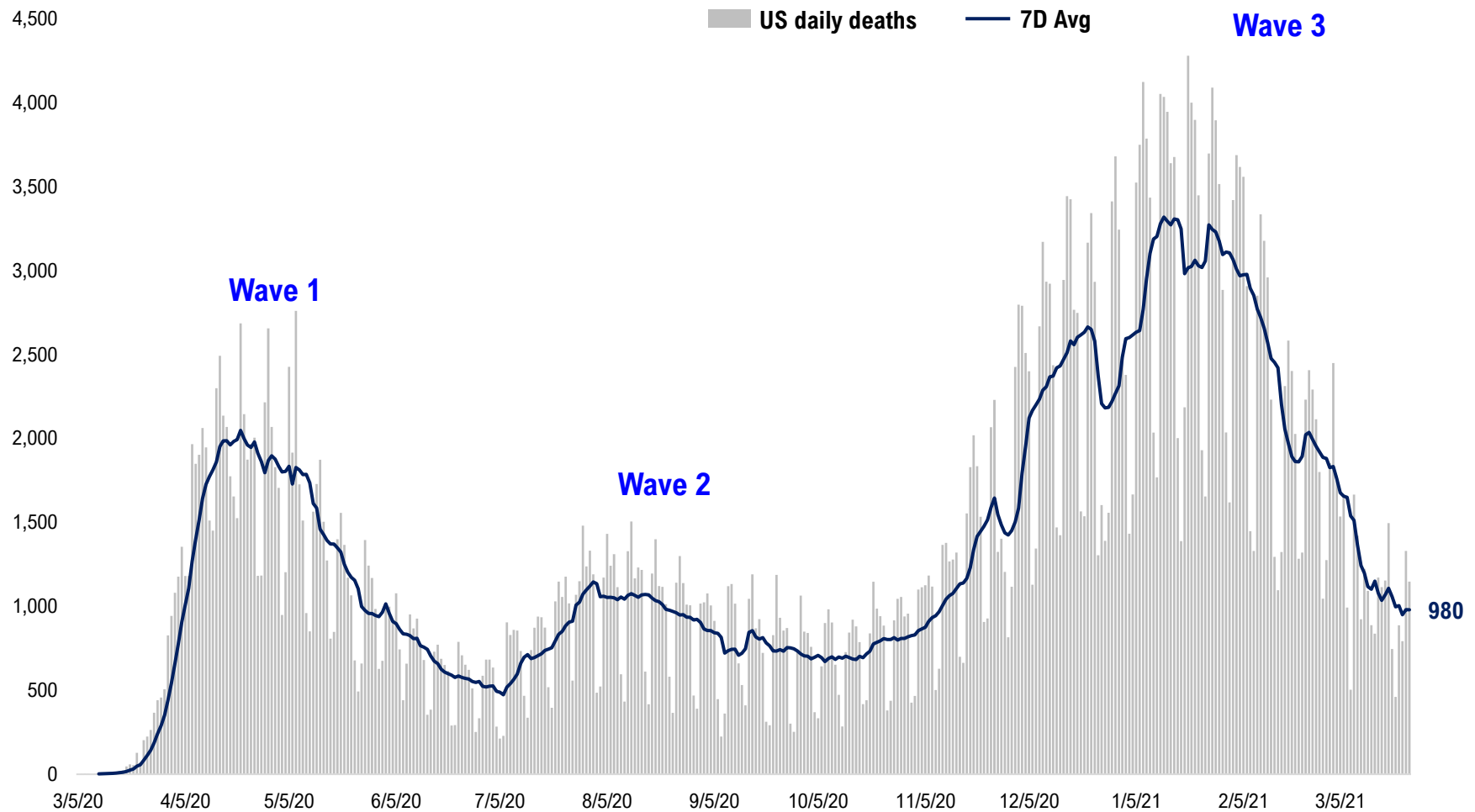
#9: Incremental Hospitalization Rate...

Incremental Hospitalization Rate: 7D Net Hospitalizations / 7D Total New Cases
(aggregate of 50 states + Washington, D.C.)



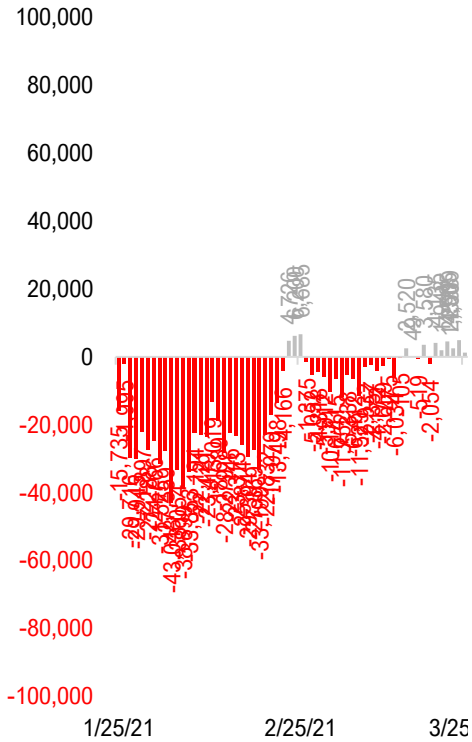
#10: US Daily New Fatalities...

US daily COVID-19 Fatalities

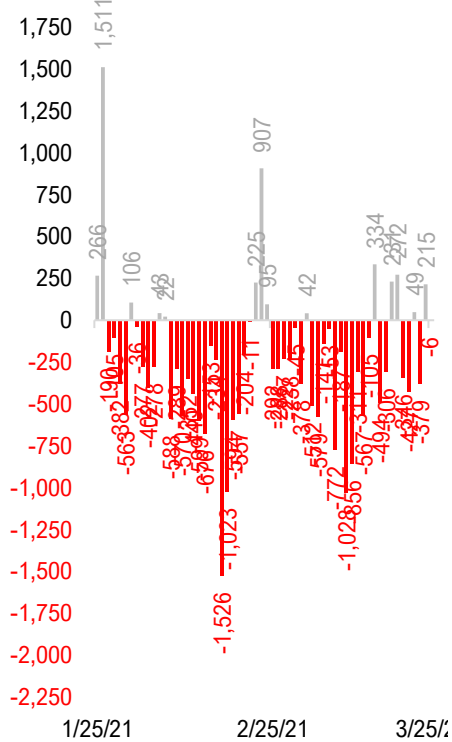


#11: Rolling 7-Day Change in the Key Metrics... (Past 8 Weeks)

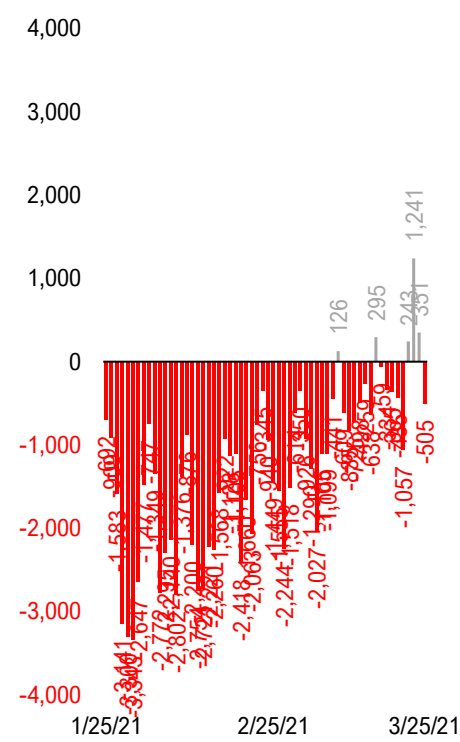
Daily New Cases
(8/10-8/23 ex-CA; 9/4-9/5 ex-IL)



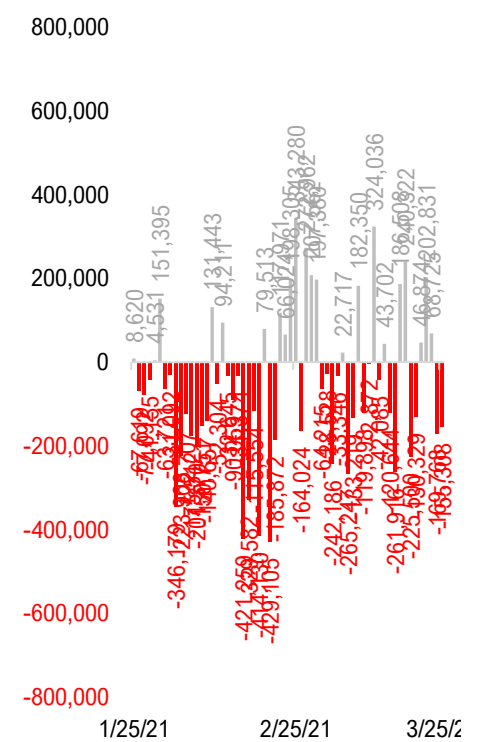
Daily Deaths



Daily Net Hospitalization
(Red = more discharge than admission)

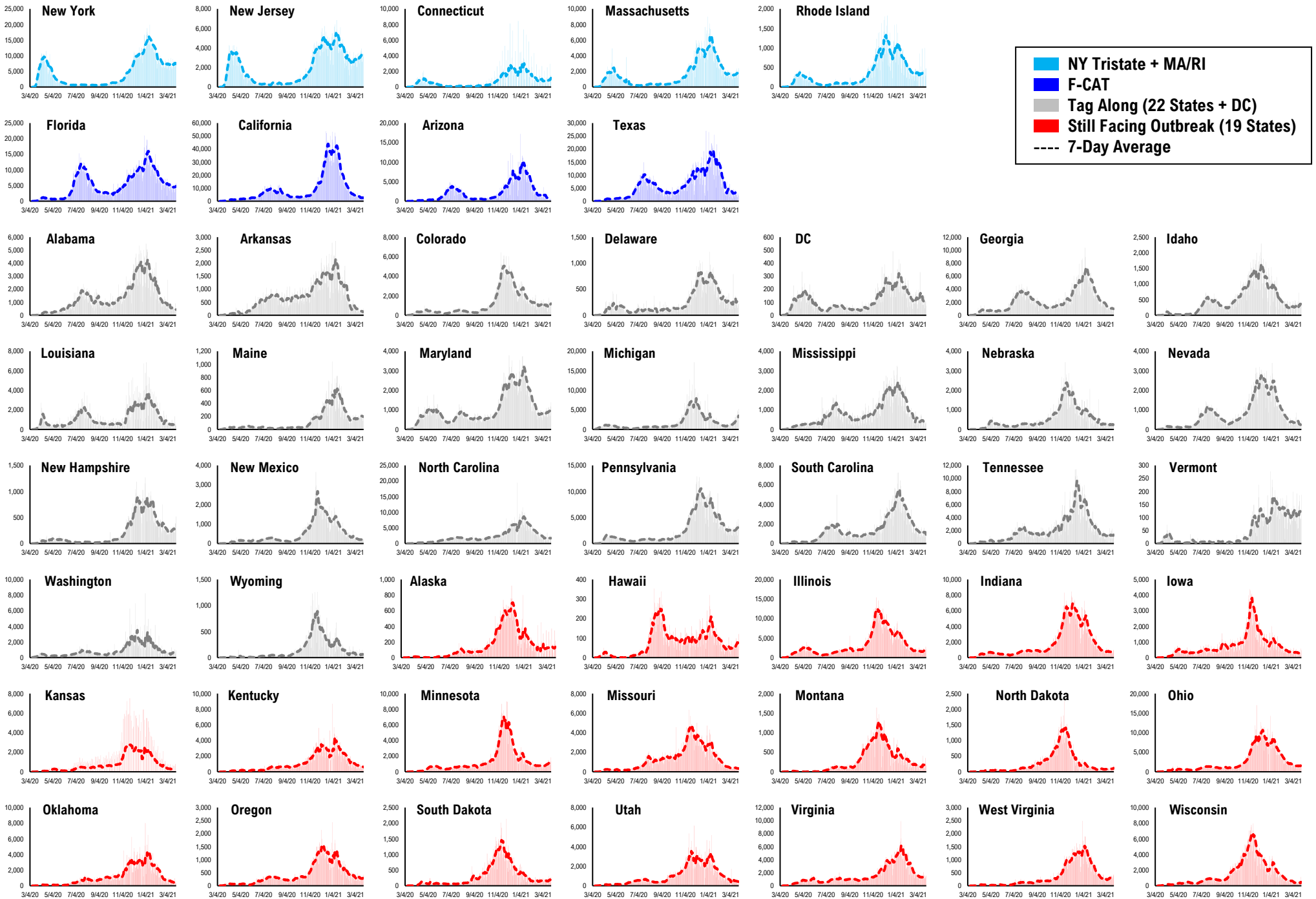


Daily Tests

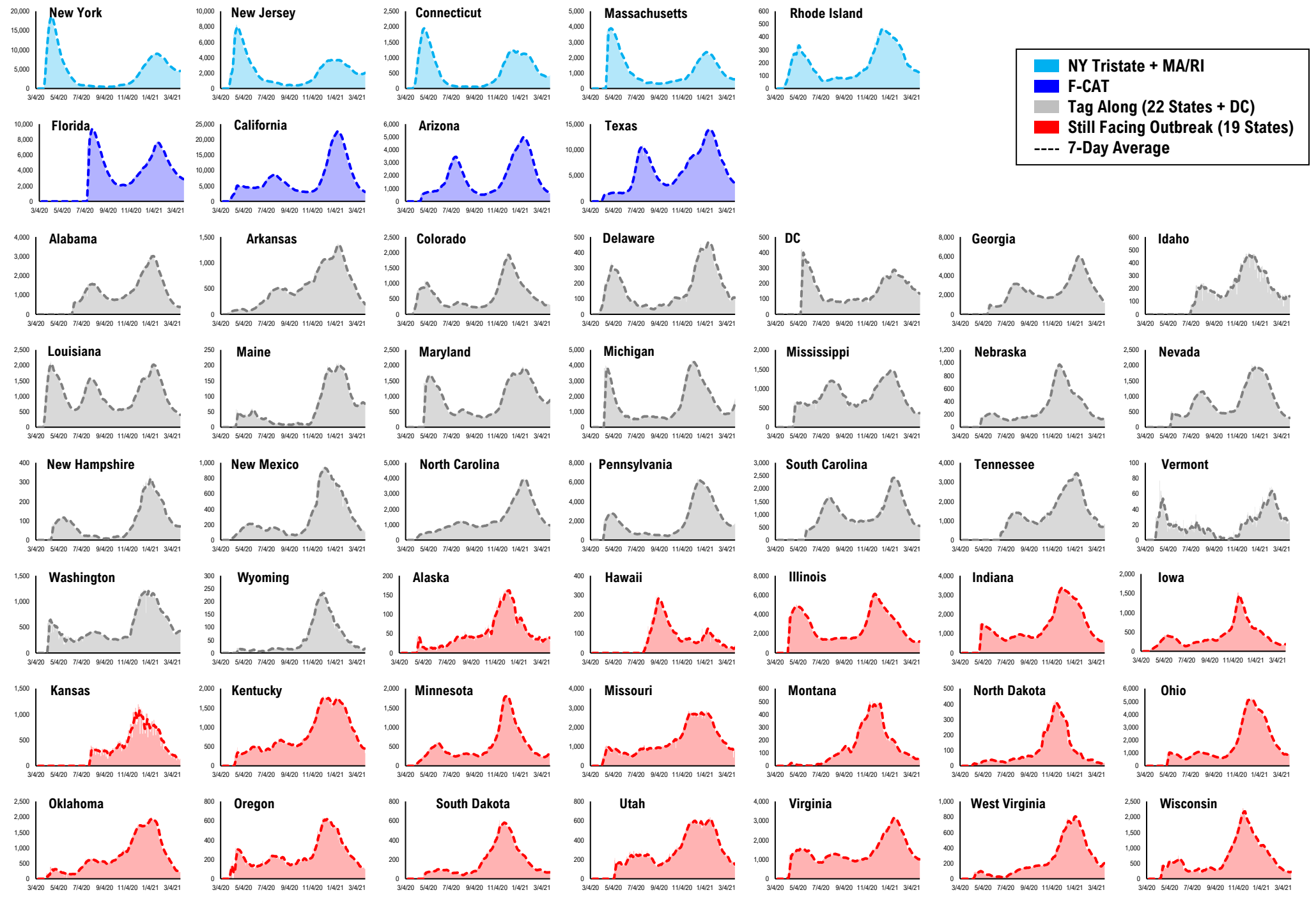


* Ignored California between 8/10 and 8/23, due to its data glitch caused 300,000-case backlog
Source: Fundstrat, COVID-19 Tracking Project, State Department of Health

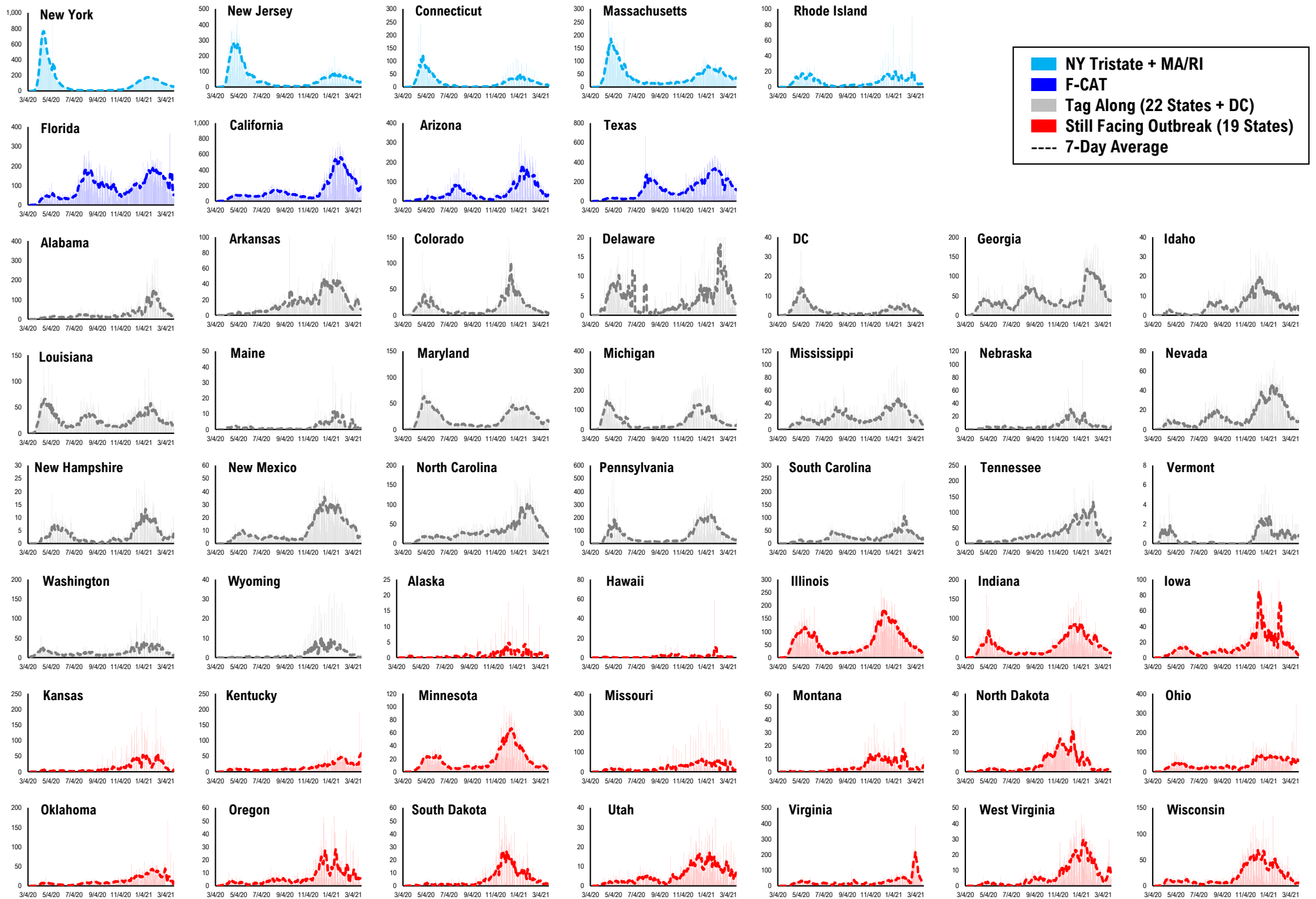
#12: Daily New Cases by States...



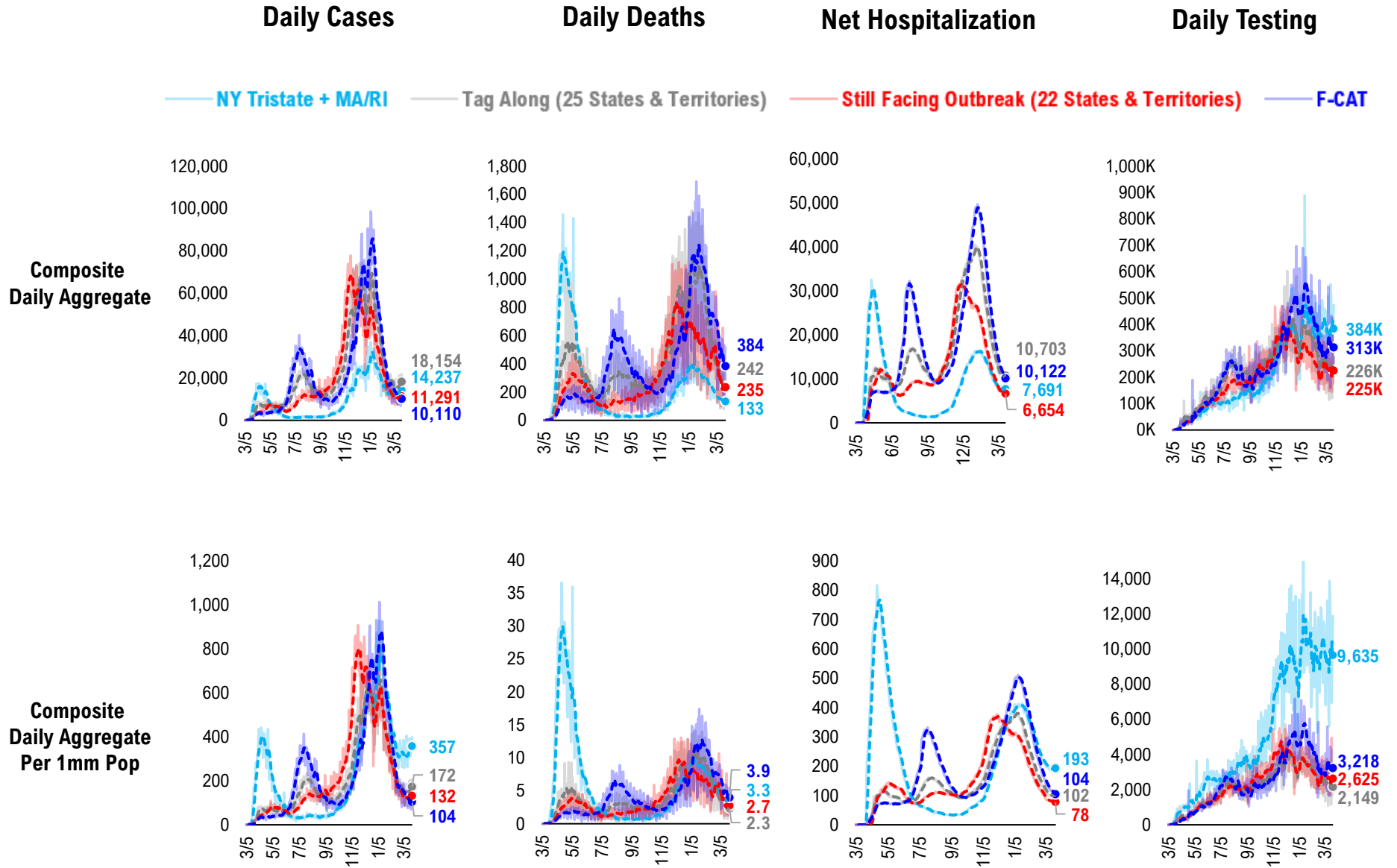
#13: Current Hospitalizations by States...



#14: Daily New Deaths by States...

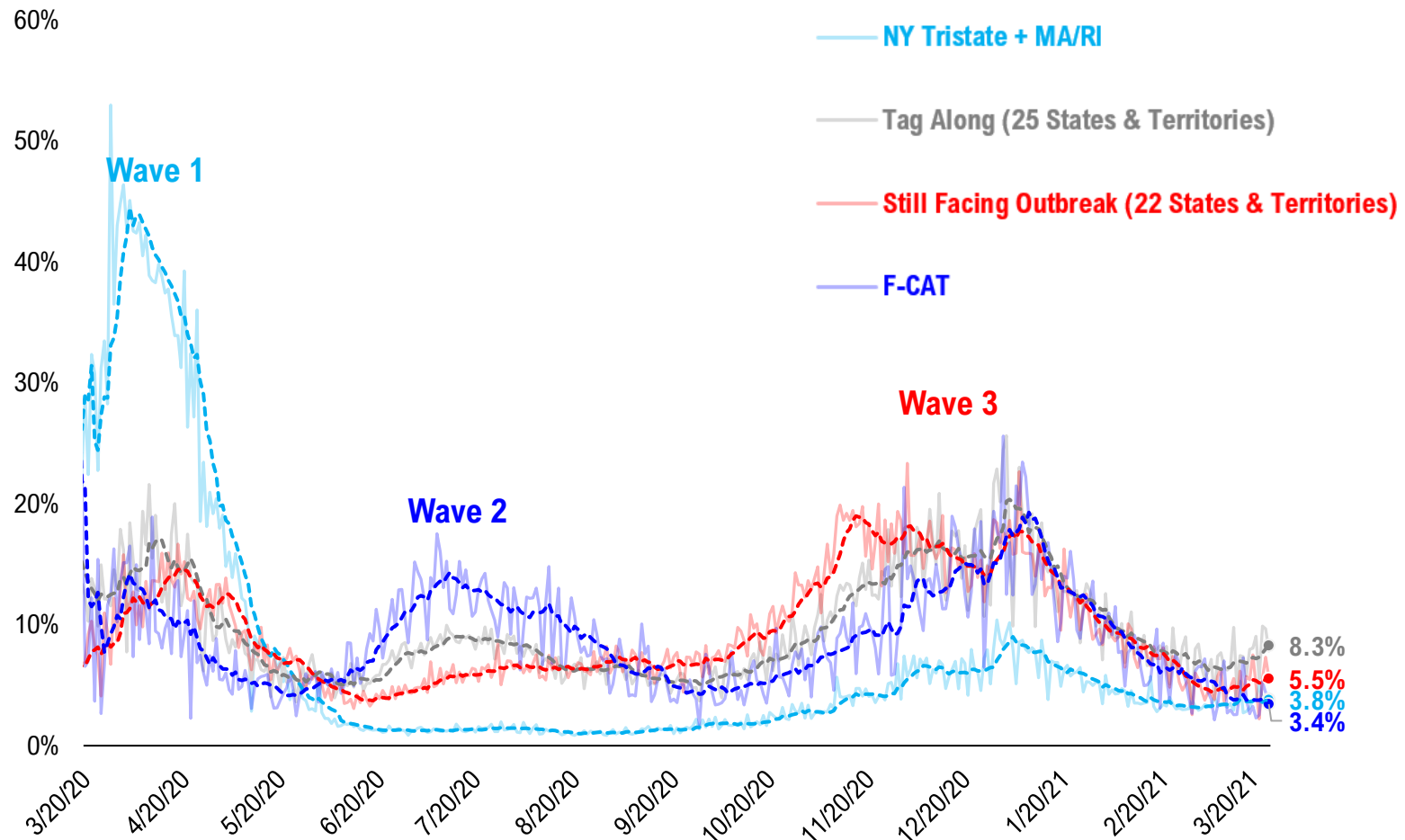


#15: State COVID-19 situation by Tier...

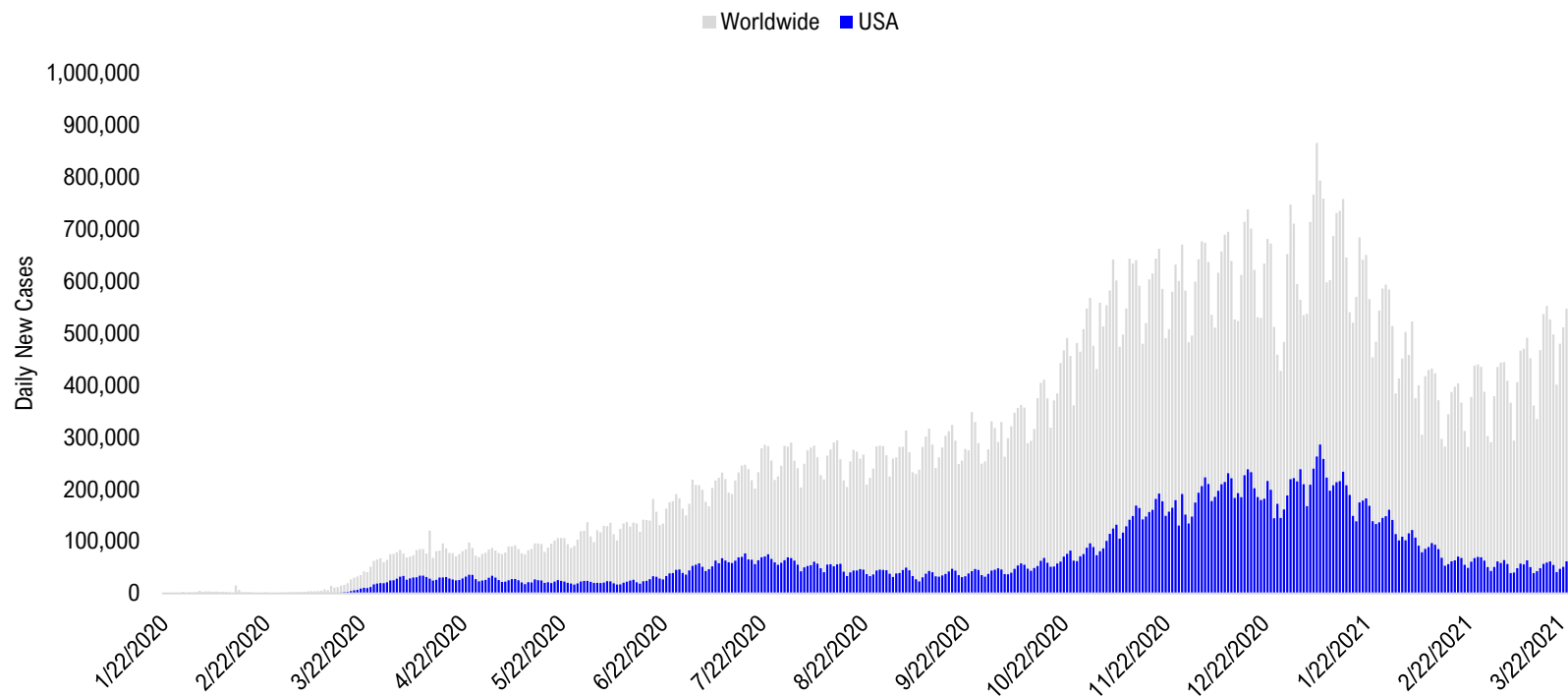


#16: State COVID-19 Daily Positivity Rate by Tier...

Composite Daily Positivity Rate



#17: Global COVID-19 Situation at a Glance...



Nov 6	Nov 20	Dec 4	Dec 18	Jan 1	Jan 15	Jan 29	Feb 12	Feb 26	Mar 12	Mar 24
Europe 291,115	Europe 261,193	Europe 234,613	Europe 248,691	Europe 227,213	Europe 243,930	Europe 195,208	Europe 145,047	Europe 150,232	Europe 172,950	Europe 215,442
US + Canada 99,028	US + Canada 168,126	US + Canada 181,863	US + Canada 218,055	US + Canada 195,207	US + Canada 228,560	US + Canada 151,931	US + Canada 94,843	Latin America 90,723	Latin America 106,679	Latin America 117,070
Latin America 50,150	Latin America 59,427	Latin America 77,676	Latin America 85,341	Latin America 78,683	Latin America 118,362	Latin America 110,627	Latin America 87,199	US + Canada 65,753	US + Canada 54,551	US + Canada 57,436
Pakistan + India + Bangladesh 49,262	Pakistan + India + Bangladesh 44,091	Pakistan + India + Bangladesh 41,888	Pakistan + India + Bangladesh 29,698	Africa 23,274	Africa 31,292	Asia ex- India+Pakistan 26,451	Asia ex- India+Pakistan 19,467	Asia ex- India+Pakistan 16,429	Pakistan + India + Bangladesh 23,076	Pakistan + India + Bangladesh 50,880
Asia ex- India+Pakistan 12,906	Asia ex- India+Pakistan 14,176	Asia ex- India+Pakistan 16,452	Africa 17,772	Pakistan + India + Bangladesh 19,958	Asia ex- India+Pakistan 25,115	Africa 20,287	Pakistan + India + Bangladesh 12,778	Pakistan + India + Bangladesh 16,328	Asia ex- India+Pakistan 14,244	Asia ex- India+Pakistan 18,212
Africa 11,559	Africa 13,534	Africa 13,958	Asia ex- India+Pakistan 17,001	Asia ex- India+Pakistan 18,156	Pakistan + India + Bangladesh 21,782	Pakistan + India + Bangladesh 15,623	Africa 12,288	Africa 9,945	Africa 10,142	Africa 10,168

Disclosures

This research is for the clients of FS Insight only. For important disclosures and rating histories regarding sectors or companies that are the subject of this report, please contact your sales representative or FS Insight at 150 East 52nd Street, New York, NY, 10022 USA.

Analyst Certification (Reg AC)

Thomas J. Lee, the research analyst denoted by an “AC” on the cover of this report, hereby certifies that all of the views expressed in this report accurately reflect his personal views, which have not been influenced by considerations of the firm’s business or client relationships.

Neither I, nor a member of my household is an officer, director, or advisory board member of the issuer(s) or has another significant affiliation with the issuer(s) that is/are the subject of this research report. There is a possibility that we will from time to time have long or short positions in, and buy or sell, the securities or derivatives, if any, referred to in this research

Conflicts of Interest

This research contains the views, opinions and recommendations of FS Insight . As of the time of writing and publication of this presentation, FS Insight does not know of, or have reason to know of any material conflicts of interest at the time of the publication of this presentation. The Company has no contractual relationship, nor have we received any compensation from any of the companies listed in this research report.

Analyst Industry/Sector Views

Positive (+): The analyst expects the performance of his industry/sector coverage universe over the next 6-18 months to be attractive vs. the relevant broad market benchmark, being the S&P 500 for North America.

Neutral (N): The analyst expects the performance of his or her industry/sector coverage universe over the next 6-18 months to be in line with the relevant broad market benchmark, being the S&P 500 for North America.

Negative (-): The analyst expects his or her industry coverage universe over the next 6-18 months to underperform vs. the relevant broad market benchmark, being the S&P 500 for North America.

General Disclosures

FS Insight is an independent research company and is not a registered investment advisor and is not acting as a broker dealer under any federal or state securities laws. FS Insight is a member of IRC Securities’ Research Prime Services Platform. IRC Securities is a FINRA registered broker-dealer that is focused on supporting the independent research industry. Certain personnel of FS Insight (i.e. Research Analysts) are registered representatives of IRC Securities, a FINRA member firm registered as a broker-dealer with the Securities and Exchange Commission and certain state securities regulators. As registered representatives and independent contractors of IRC Securities, such personnel may receive commissions paid to or shared with IRC Securities for transactions placed by FS Insight clients directly with IRC Securities or with securities firms that may share commissions with IRC Securities in accordance with applicable SEC and FINRA requirements. IRC Securities does not distribute the research of FS Insight , which is available to select institutional clients that have engaged FS Insight .

As registered representatives of IRC Securities our analysts must follow IRC Securities’ Written Supervisory Procedures. Notable compliance policies include (1) prohibition of insider trading or the facilitation thereof, (2) maintaining client confidentiality, (3) archival of electronic communications, and (4) appropriate use of electronic communications, amongst other compliance related policies.

FS Insight does not have the same conflicts that traditional sell-side research organizations have because FS Insight (1) does not conduct any investment banking activities, (2) does not manage any investment funds, and (3) our clients are only institutional investors.

This research is for the clients of FS Insight only. Additional information is available upon request. Information has been obtained from sources believed to be reliable but FS Insight does not warrant its completeness or accuracy except with respect to any disclosures relative to FS Insight and the analyst’s involvement (if any) with any of the subject companies of the research. All pricing is as of the market close for the securities discussed, unless otherwise stated. Opinions and estimates constitute our judgment as of the date of this material and are subject to change without notice. Past performance is not indicative of future results. This material is not intended as an offer or solicitation for the purchase or sale of any financial instrument. The opinions and recommendations herein do not take into account individual client circumstances, risk tolerance, objectives, or needs and are not intended as recommendations of particular securities, financial instruments or strategies. The recipient of this report must make its own independent decision regarding any securities or financial instruments mentioned herein. Except in circumstances where FS Insight expressly agrees otherwise in writing, FS Insight is not acting as a municipal advisor and the opinions or views contained herein are not intended to be, and do not constitute, advice, including within the meaning of Section 15B of the Securities Exchange Act of 1934. All research reports are disseminated and available to all clients simultaneously through electronic publication to our internal client website, FS Insight .com. Not all research content is redistributed to our clients or made available to third-party aggregators or the media. Please contact your sales representative if you would like to receive any of our research publications.

Copyright 2021 FS Insight LLC. All rights reserved. No part of this material may be reprinted, sold or redistributed without the prior written consent of FS Insight LLC.