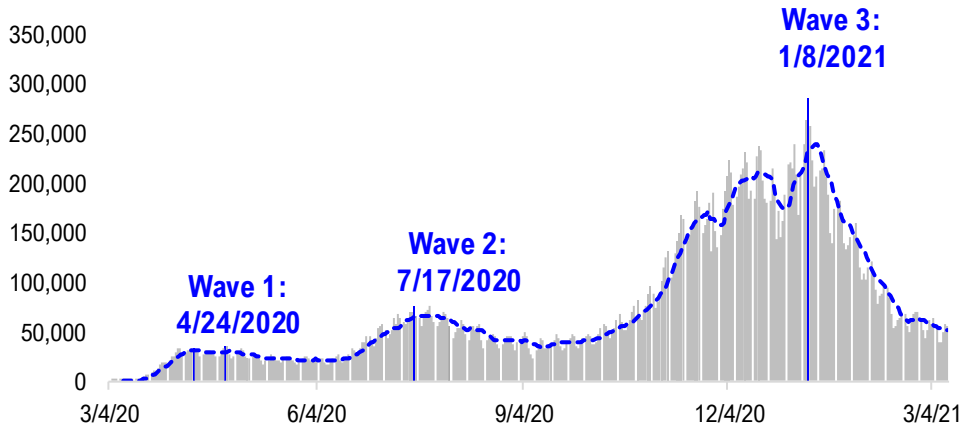


FSInsight Daily COVID-19 Chartbook

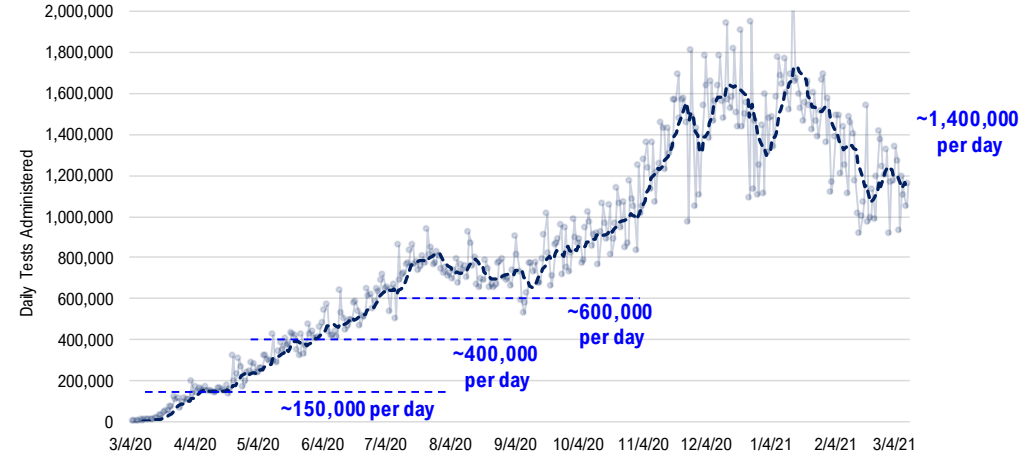


#1: USA COVID-19 Situation at a Glance...

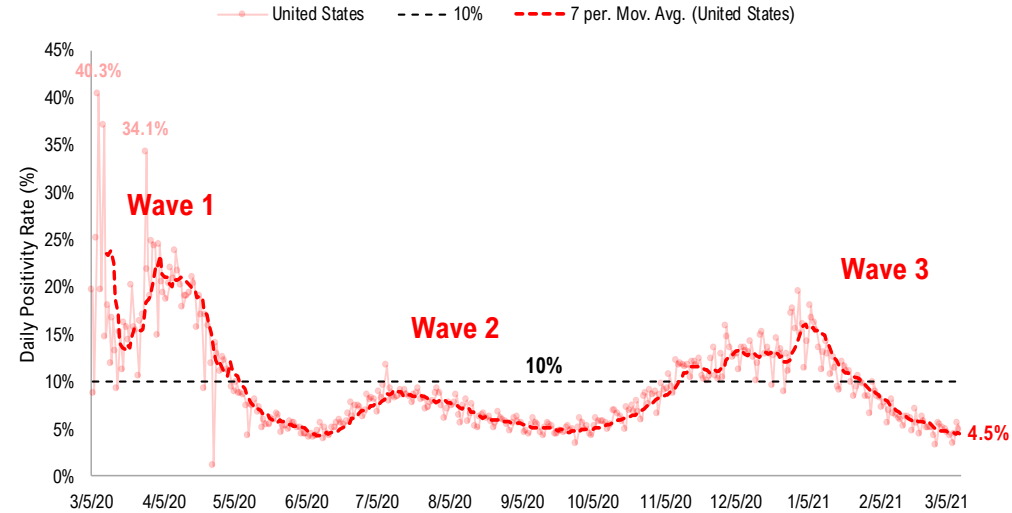
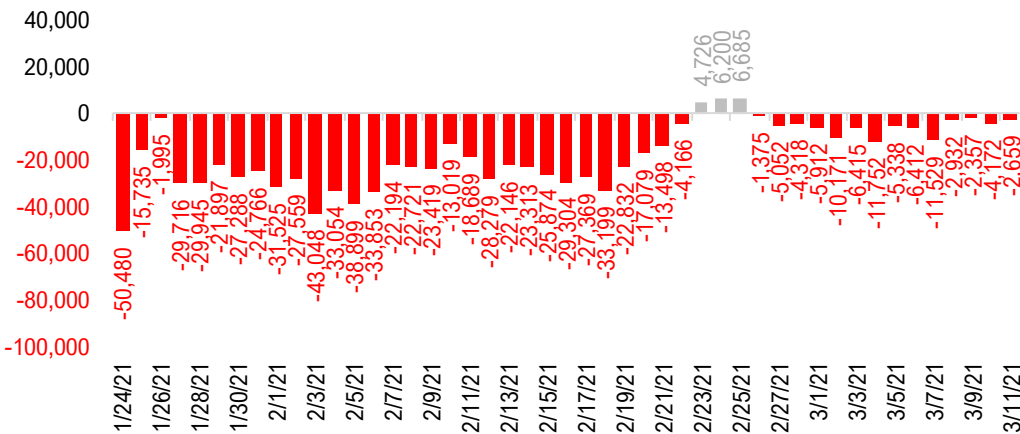
US daily new cases



USA total COVID-19 tests administered

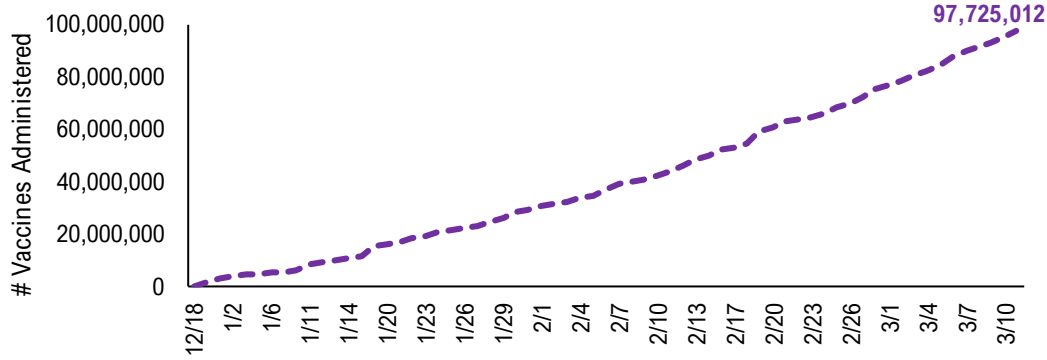


US daily new cases rolling 7D delta

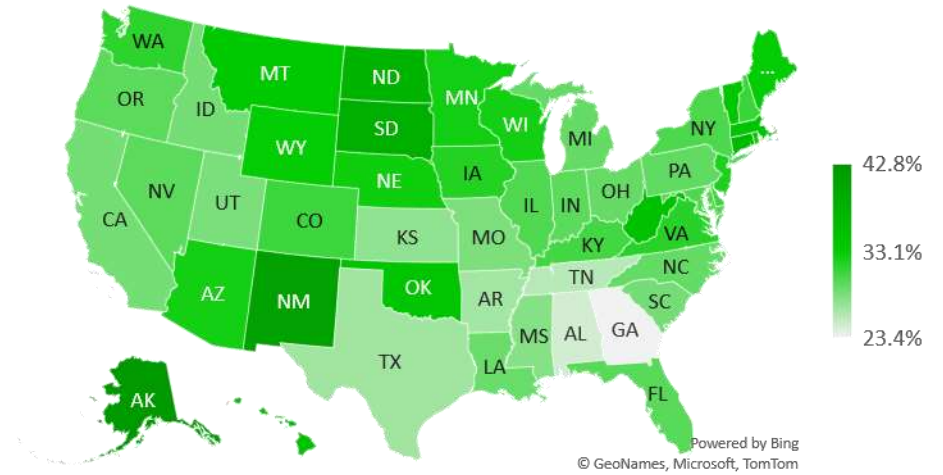


#2: USA COVID-19 Vaccination Progress at a Glance...

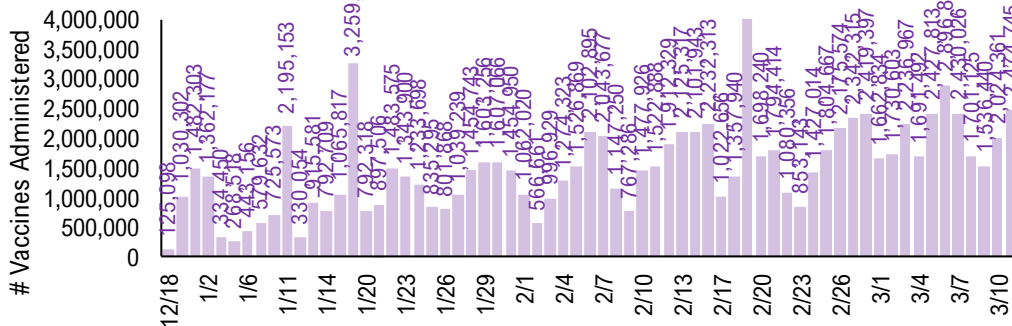
Cumulative Vaccines Administered



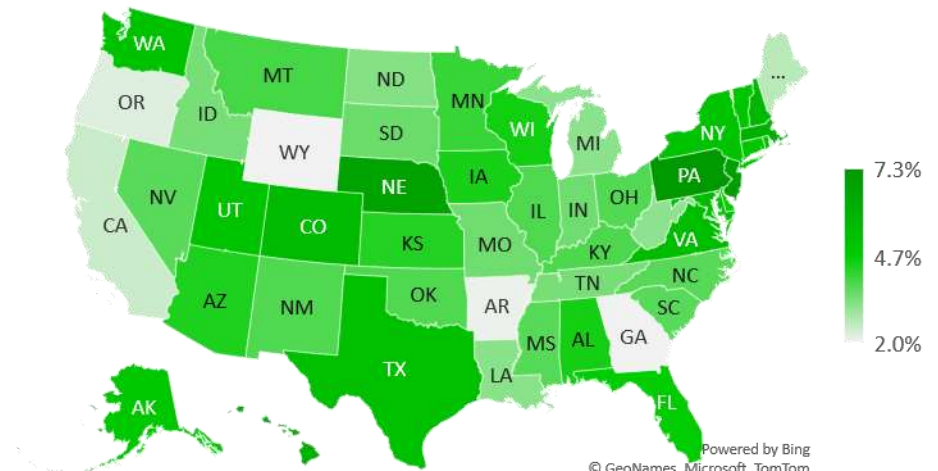
Cumulative Vaccines Administered as % State Population



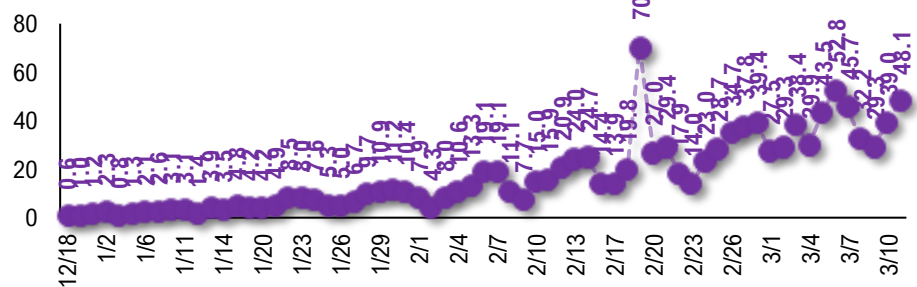
Daily Vaccines Administered



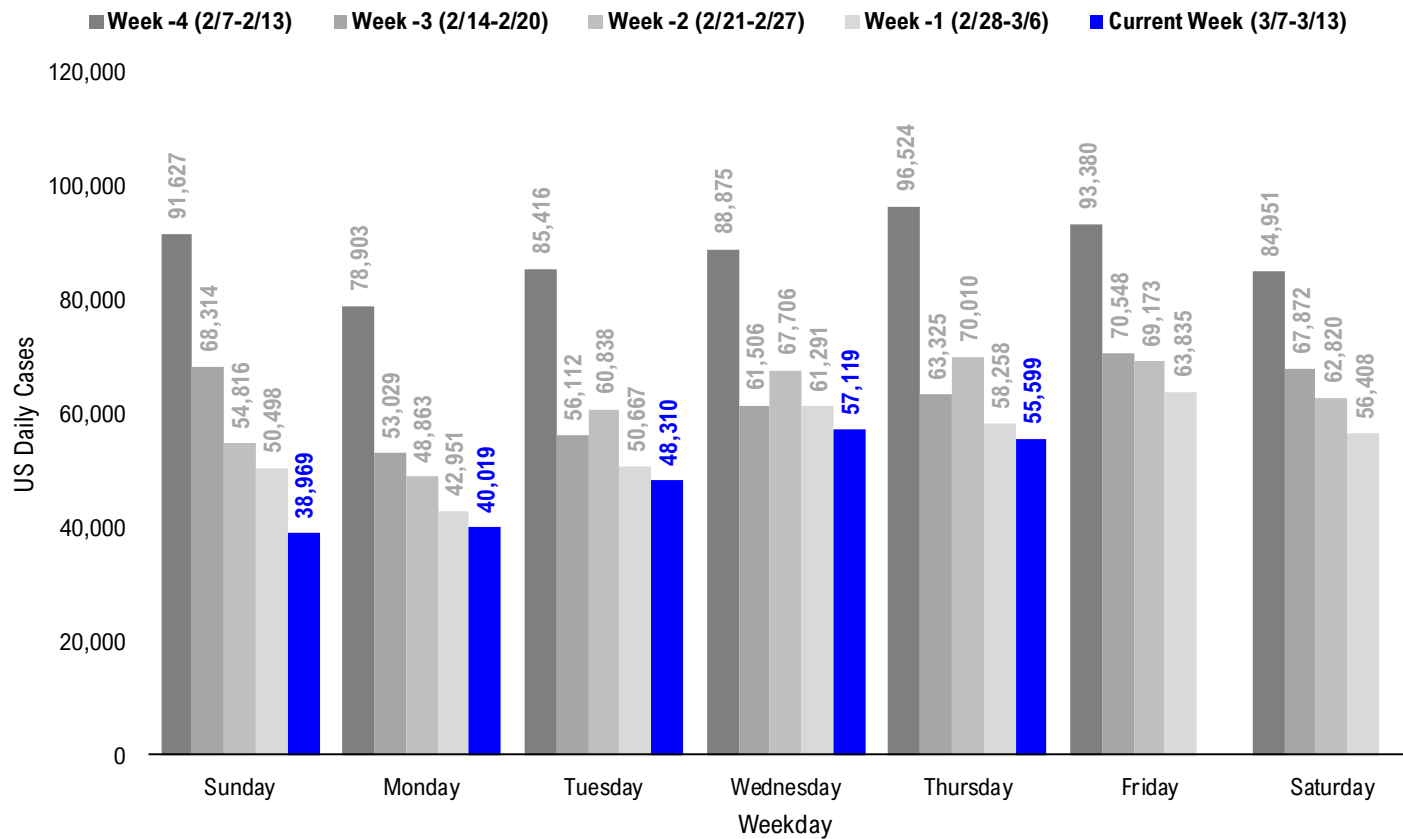
Implied Weekly Vaccines Administered as % State Population



Daily Vaccinations / Daily Cases (7D Avg)



#3: USA COVID-19 Daily Cases Weekday Seasonality (Past 4 Weeks) ...



#4: USA State COVID-19 Situation at a Glance...

	Sorted Daily Cases		Daily Cases (3D avg) per 1mm residents				Hospitalization			
	% US Pop	% US GDP	7D		# Days	% Decline in Daily Cases	7D Net		Hospitalization / 7D New Cases	
			3/9	Delta			3/9	Delta		
United States	100%	100%	48.310	-2.357	129	-17	59	-84%	-8.664	-2.4%

	Sorted Daily Cases		Daily Cases (3D avg) per 1mm residents				Hospitalization			
	% US Pop	% US GDP	7D		# Days	% Decline in Daily Cases	7D Net		Hospitalization / 7D New Cases	
			3/9	Delta			3/9	Delta		
United States	100%	100%	48.310	-2.357	129	-17	59	-84%	-8.664	-2.4%

States:

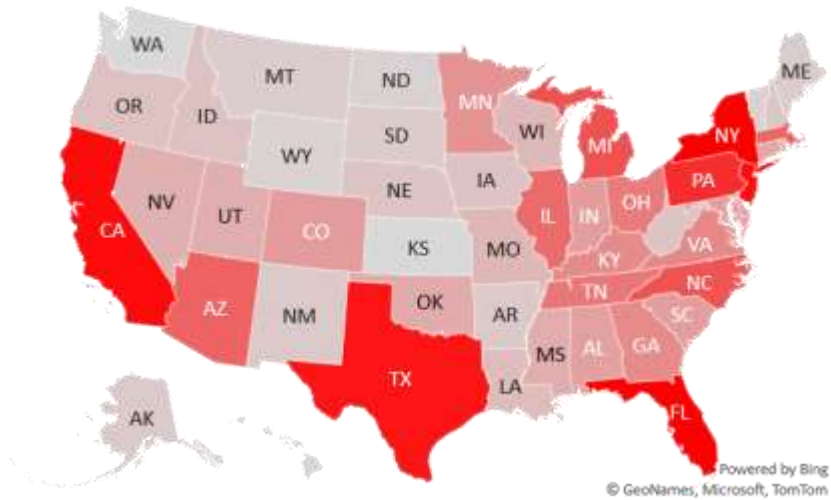
1	New York	5.9%	8.1%	6,747	-846	344	-17	61	-62%	-442	(0.9%)
2	Florida	6.5%	5.0%	5,065	-1,053	223	-77	62	-75%	-408	(1.3%)
3	California	11.9%	14.6%	3,184	-320	103	+24	60	-92%	-1,009	(3.6%)
4	New Jersey	2.7%	3.0%	3,157	+618	359	+50	61	-48%	36	0.2%
5	Texas	8.7%	8.8%	3,032	-461	114	-58	63	-85%	-857	(4.1%)
6	Pennsylvania	3.9%	3.8%	2,652	-376	214	+1	96	-77%	-134	(0.8%)
7	Michigan	3.0%	2.6%	2,091	+565	179	+41	113	-79%	77	0.8%
8	North Carolina	3.2%	2.7%	2,061	-441	156	-31	61	-85%	-251	(2.1%)
9	Arizona	2.2%	1.7%	1,835	+681	148	-3	67	-91%	-193	(1.8%)
10	Massachusetts	2.1%	2.8%	1,809	+242	229	+5	61	-80%	-61	(0.6%)
11	Illinois	3.8%	4.2%	1,700	-40	129	-14	118	-88%	-82	(0.7%)
12	Tennessee	2.1%	1.8%	1,512	-2	205	+22	83	-86%	-287	(3.3%)
13	Ohio	3.5%	3.3%	1,448	-427	149	-11	91	-85%	-101	(1.0%)
14	Virginia	2.6%	2.6%	1,250	-50	157	-8	52	-83%	-223	(2.4%)
15	Georgia	3.2%	2.9%	1,209	-587	107	-52	60	-87%	-2,087	(27.2%)
16	Kentucky	1.3%	1.0%	1,207	+140	231	-17	62	-80%	-122	(2.1%)
17	Minnesota	1.7%	1.8%	1,093	+153	161	+35	101	-89%	7	0.1%
18	Colorado	1.7%	1.8%	955	-396	176	-9	110	-83%	-69	(1.0%)
19	Maryland	1.8%	2.0%	924	+115	135	+22	60	-77%	-68	(1.2%)
20	South Carolina	1.6%	1.1%	919	-274	173	-10	60	-87%	-139	(1.8%)
21	Indiana	2.0%	1.8%	910	-25	116	+5	96	-90%	-94	(1.7%)
22	Alabama	1.5%	1.1%	865	-57	148	-145	63	-86%	-96	(2.3%)
23	Delaware	0.3%	0.4%	789	+571	382	+190	61	-59%	-40	(2.0%)
24	Connecticut	1.1%	1.3%	735	-143	187	+11	57	-86%	-50	(1.0%)
25	Oklahoma	1.2%	1.0%	694	-201	150	+2	60	-89%	-136	(3.2%)
26	Mississippi	0.9%	0.6%	679	+200	165	+35	61	-83%	-82	(2.8%)
27	Utah	1.0%	0.9%	646	+646	194	+67	62	-85%	-80	(1.9%)
28	Nevada	0.9%	0.8%	618	+233	148	+31	61	-85%	-60	(2.2%)

States:

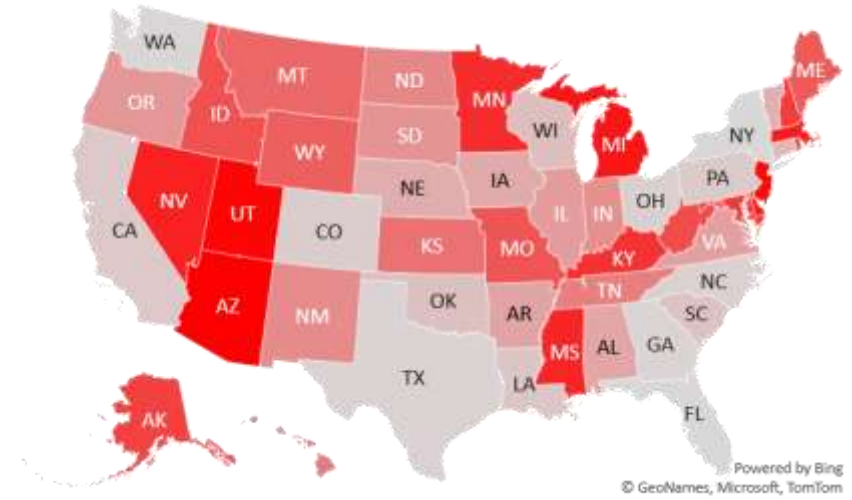
29	Missouri	1.8%	1.5%	530	+63	71	+10	117	-91%	-135	(5.0%)
30	Rhode Island	0.3%	0.3%	525	+83	358	+0	96	-77%	-7	(0.3%)
31	Wisconsin	1.8%	1.6%	502	-175	85	-3	118	-93%	-3	(0.1%)
32	Louisiana	1.4%	1.3%	441	-309	118	-32	63	-90%	-40	(1.2%)
33	Idaho	0.5%	0.4%	364	+65	243	+33	91	-79%	-9	(0.4%)
34	Oregon	1.3%	1.2%	353	-33	89	+19	95	-78%	-44	(2.2%)
35	Iowa	1.0%	0.9%	341	-59	132	+15	118	-90%	-16	(0.7%)
36	West Virginia	0.5%	0.4%	338	+77	162	+45	67	-85%	-32	(1.8%)
37	Nebraska	0.6%	0.6%	303	-62	149	-28	112	-90%	-32	(1.7%)
38	New Hampshire	0.4%	0.4%	301	+113	173	+28	66	-79%	-14	(0.9%)
39	Arkansas	0.9%	0.6%	250	-56	75	-15	60	-91%	-119	(7.6%)
40	New Mexico	0.6%	0.5%	233	-25	108	-28	111	-93%	-47	(3.0%)
41	Alaska	0.2%	0.3%	228	+88	210	+25	96	-81%	6	0.6%
42	South Dakota	0.3%	0.3%	201	-31	214	-11	117	-90%	-20	(1.8%)
43	Maine	0.4%	0.3%	187	+51	128	+12	55	-79%	1	0.1%
44	Montana	0.3%	0.2%	181	+1	145	-20	116	-89%	-17	(1.9%)
45	Vermont	0.2%	0.2%	129	-70	161	-54	61	-52%	0	0.0%
46	District of Columbia	0.2%	0.7%	122	-74	259	+103	60	-47%	-5	(0.4%)
47	North Dakota	0.2%	0.3%	111	-6	134	-11	117	-94%	-5	(0.9%)
48	Wyoming	0.2%	0.2%	98	+29	120	-3	112	-93%	-6	(1.4%)
49	Hawaii	0.4%	0.5%	58	-1	34	+8	194	-83%	-1	(0.3%)
50	U.S. Virgin Islands	0.0%	0.0%	17	+8	53	-128	202	-87%	0	0.0%
51	Washington	2.3%	2.7%	0	-716	47	-39	106	-92%	-69	(2.5%)
52	Puerto Rico	1.0%	0.5%	0	-83	21	-3	82	-94%	-153	(14.7%)
53	Northern Mariana	0.0%	0.0%	0	+0	0	-6	135	-100%	0	0.0%
54	Kansas	0.9%	0.8%	0	+0	89	-3	106	-94%	18	0.8%
55	Guam	0.0%	0.0%	0	-2	0	-20	121	-100%	-3	(33.0%)
56	American Samoa	0.0%	0.0%	0	+0	0	+0	0	0%	0	

#5: USA COVID-19 Heat Map...

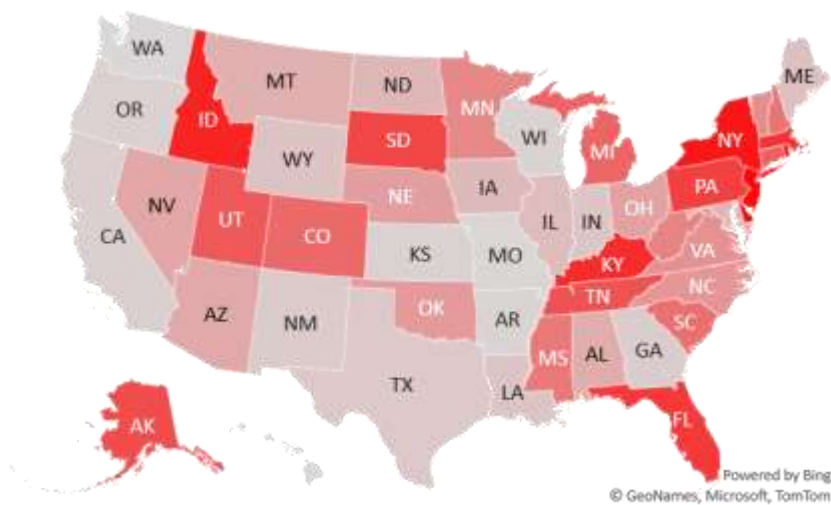
Daily Case Increases



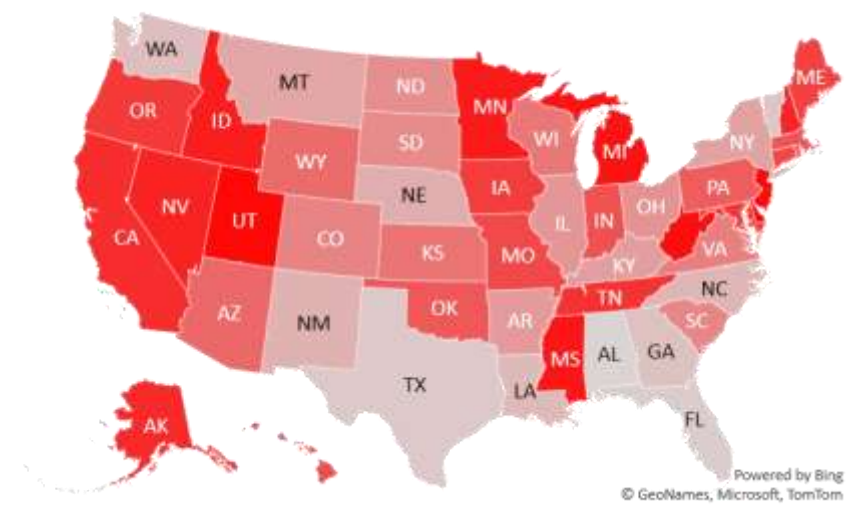
7D Delta in Daily New Cases



Daily Case Increases per 1mm Resident (3D Avg)



7D Delta in Daily Case Increases per 1mm Resident (3D Avg)



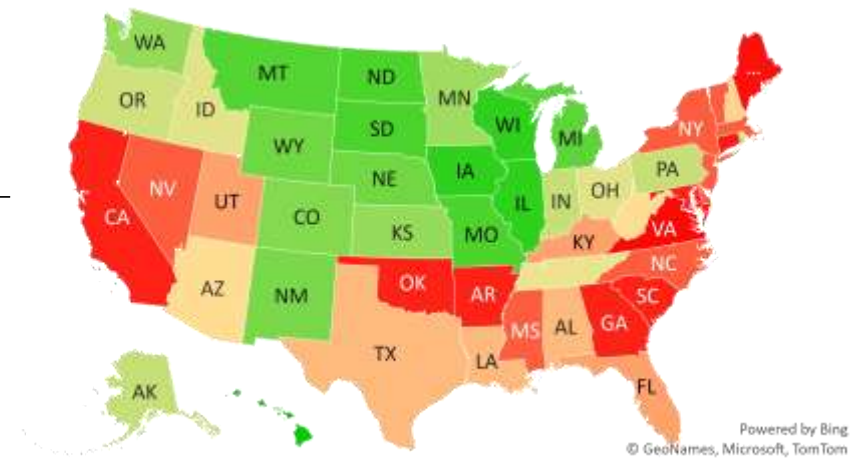
#6: # of Days since Daily Case Peaked by States...

Days since Daily Cases (3D Avg) Peak (as of 3/9)

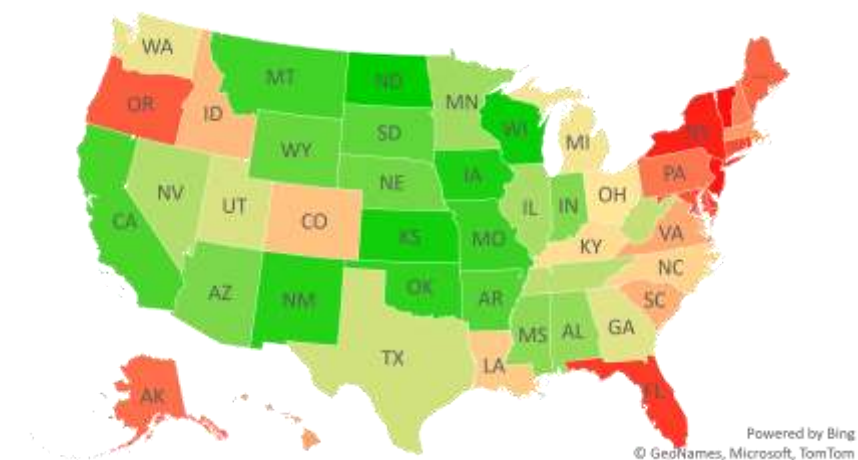
	Sorted			
	Peak Date	3/11/21	% off the Peak	% US Pop
United States	1/9/21	61	-80%	100%
States:				
U.S. Virgin Islands	8/21/20	202	-87%	0.0%
Hawaii	8/29/20	194	-83%	0.4%
Northern Mariana Island	10/27/20	135	-100%	0.0%
Guam	11/10/20	121	-100%	0.0%
Wisconsin	11/13/20	118	-93%	1.8%
Illinois	11/13/20	118	-88%	3.8%
Iowa	11/13/20	118	-90%	1.0%
South Dakota	11/14/20	117	-90%	0.3%
North Dakota	11/14/20	117	-94%	0.2%
Missouri	11/14/20	117	-91%	1.8%
Montana	11/15/20	116	-89%	0.3%
Michigan	11/18/20	113	-79%	3.0%
Wyoming	11/19/20	112	-93%	0.2%
Nebraska	11/19/20	112	-90%	0.6%
New Mexico	11/20/20	111	-93%	0.6%
Colorado	11/21/20	110	-83%	1.7%
Washington	11/25/20	106	-92%	2.3%
Kansas	11/25/20	106	-94%	0.9%
Minnesota	11/30/20	101	-89%	1.7%
Rhode Island	12/5/20	96	-77%	0.3%
Pennsylvania	12/5/20	96	-77%	3.9%
Indiana	12/5/20	96	-90%	2.0%
Alaska	12/5/20	96	-81%	0.2%
Oregon	12/6/20	95	-78%	1.3%
Ohio	12/10/20	91	-85%	3.5%
Idaho	12/10/20	91	-79%	0.5%
Tennessee	12/18/20	83	-86%	2.1%
Puerto Rico	12/19/20	82	-94%	1.0%

	Sorted			
	Peak Date	3/11/21	% off the Peak	% US Pop
United States	1/9/21	61	-80%	100%
States:				
West Virginia	1/3/21	67	-85%	0.5%
Arizona	1/3/21	67	-91%	2.2%
New Hampshire	1/4/21	66	-79%	0.4%
Texas	1/7/21	63	-85%	8.7%
Louisiana	1/7/21	63	-90%	1.4%
Alabama	1/7/21	63	-86%	1.5%
Utah	1/8/21	62	-85%	1.0%
Kentucky	1/8/21	62	-80%	1.3%
Florida	1/8/21	62	-75%	6.5%
Vermont	1/9/21	61	-52%	0.2%
New York	1/9/21	61	-62%	5.9%
Nevada	1/9/21	61	-85%	0.9%
New Jersey	1/9/21	61	-48%	2.7%
North Carolina	1/9/21	61	-85%	3.2%
Mississippi	1/9/21	61	-83%	0.9%
Massachusetts	1/9/21	61	-80%	2.1%
Delaware	1/9/21	61	-59%	0.3%
South Carolina	1/10/21	60	-87%	1.6%
Oklahoma	1/10/21	60	-89%	1.2%
Maryland	1/10/21	60	-77%	1.8%
Georgia	1/10/21	60	-87%	3.2%
District of Columbia	1/10/21	60	-47%	0.2%
California	1/10/21	60	-92%	11.9%
Arkansas	1/10/21	60	-91%	0.9%
Connecticut	1/13/21	57	-86%	1.1%
Maine	1/15/21	55	-79%	0.4%
Virginia	1/18/21	52	-83%	2.6%

Days since Daily Case Peak: Longer = Good



Daily Cases % off the Peak: Larger Decline = Good



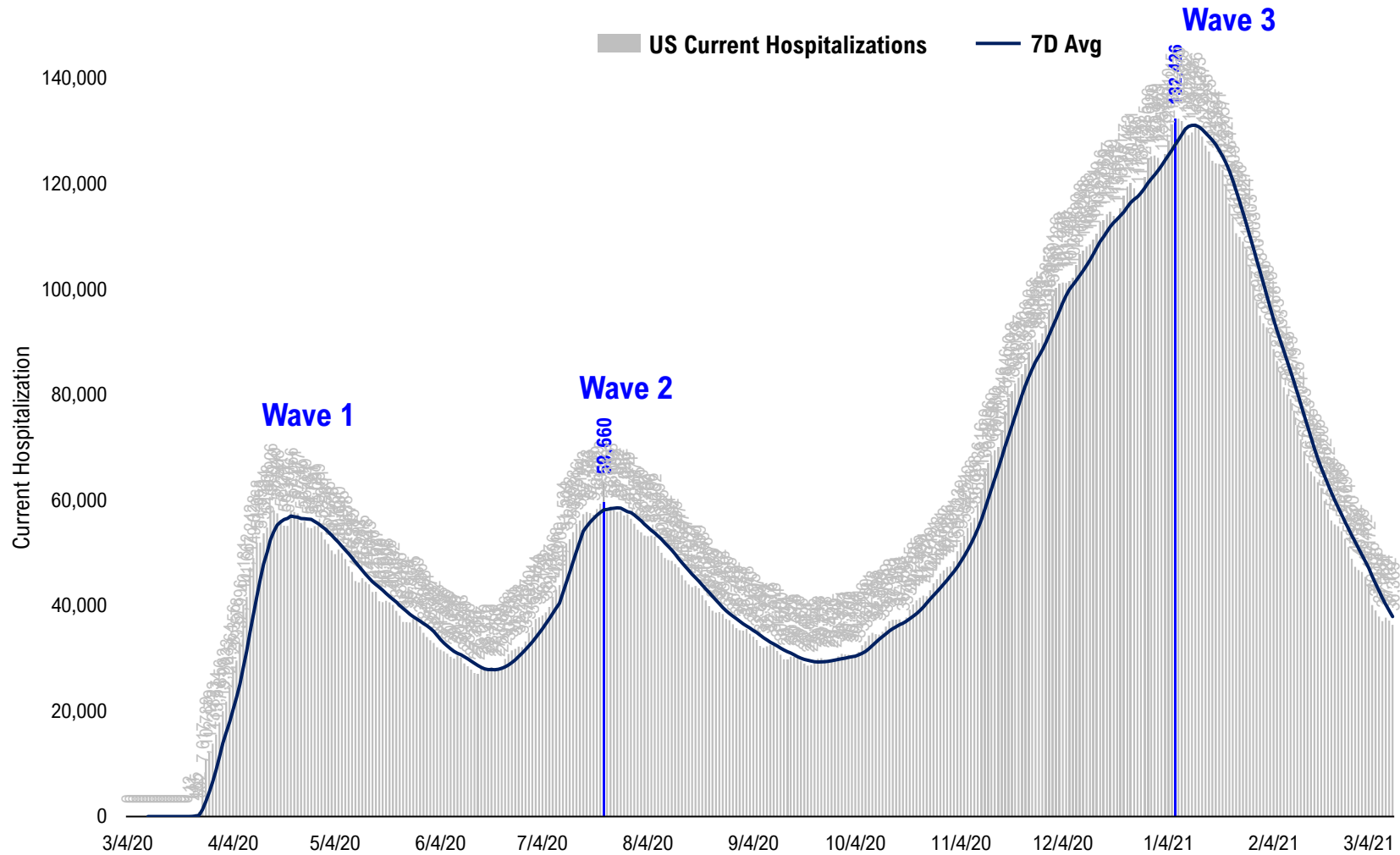
#7: US New Cases by States... (sorted by today's new cases)

	Sorted						Sorted				
	7D Ago	Last 3-day Trend					7D Ago	Last 3-day Trend			
	3/4/21	3/9/21	3/10/21	3/11/21	vs 7D ago		3/4/21	3/9/21	3/10/21	3/11/21	vs 7D ago
United States	58,258	48,310	57,119	55,599	-2,659	United States	58,258	48,310	57,119	55,599	-2,659
States:						States:					
New York	7,593	6,850	6,489	6,747		Missouri	467	332	449	530	
Florida	6,118	4,426	4,853	5,065		Rhode Island	442	296	318	525	
California	3,504	2,614	6,412	3,184		Wisconsin	677	463	516	502	
New Jersey	2,539	3,398	3,008	3,157	<--higher	Louisiana	750	631	577	441	
Texas	3,493	3,744	3,104	3,032		Idaho	299	481	456	364	<--higher
Pennsylvania	3,028	2,975	2,594	2,652		Oregon	386	492	284	353	
Michigan	1,526	954	2,316	2,091	<--higher	Iowa	400	396	515	341	
North Carolina	2,502	997	1,861	2,061		West Virginia	261	229	302	338	<--higher
Arizona	1,154	563	830	1,835	<--higher	Nebraska	365	252	308	303	
Massachusetts	1,567	1,263	1,657	1,809		New Hampshire	188	192	211	301	<--higher
Illinois	1,740	1,510	1,682	1,700		Arkansas	306	241	192	250	
Tennessee	1,514	1,338	1,355	1,512		New Mexico	258	198	249	233	
Ohio	1,875	1,893	1,868	1,448		Alaska	140	88	145	228	<--higher
Virginia	1,300	1,537	1,246	1,250		South Dakota	232	157	209	201	
Georgia	1,796	1,037	1,157	1,209		Maine	136	133	195	187	<--higher
Kentucky	1,067	877	1,007	1,207		Montana	180	134	150	181	
Minnesota	940	734	905	1,093		Vermont	199	87	85	129	
Colorado	1,351	838	1,240	955		District of Columbia	196	331	96	122	
Maryland	809	631	900	924		North Dakota	117	95	101	111	
South Carolina	1,193	632	1,125	919		Wyoming	69	69	42	98	<--higher
Indiana	935	572	856	910		Hawaii	59	42	46	58	
Alabama	922	524	782	865		U.S. Virgin Islands	9	0	0	17	<--higher
Delaware	218	116	212	789	<--higher	Washington	716	473	596	0	
Connecticut	878	749	512	735		Puerto Rico	83	110	90	0	
Oklahoma	895	270	818	694		Northern Mariana Islands	0	0	0	0	
Mississippi	479	357	437	679	<--higher	Kansas	0	0	778	0	
Utah	0	560	658	646		Guam	2	0	0	0	
Nevada	385	429	325	618	<--higher	American Samoa	0	0	0	0	

<--higher – if the state has 20% more daily cases than 7D ago...
Source: Fundstrat, COVID-19 Tracking Project, State Department of Health

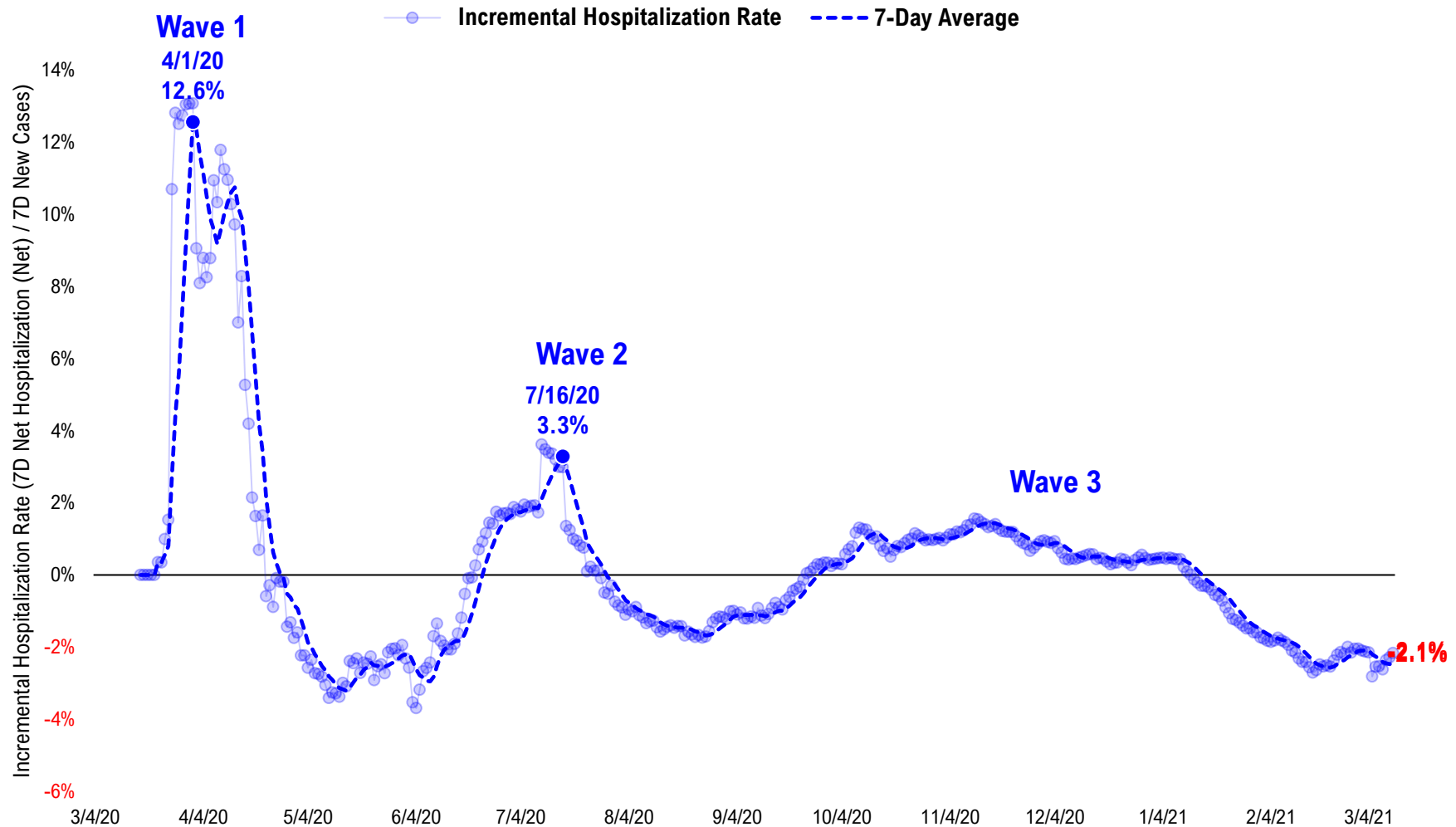
#8: US Daily Hospitalizations...

US Net Hospitalizations (aggregate of 50 states + Washington, D.C.)



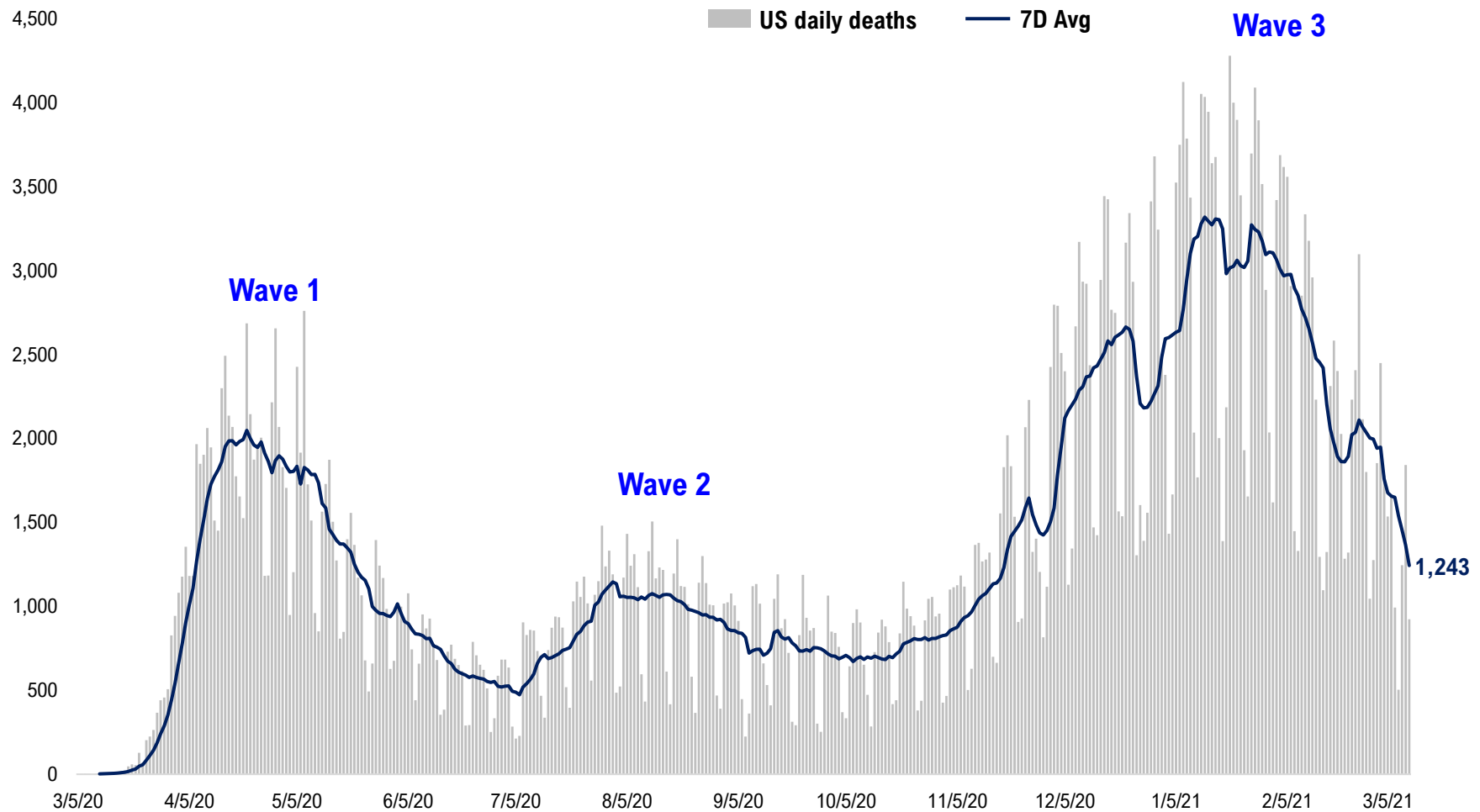
#9: Incremental Hospitalization Rate...

Incremental Hospitalization Rate: 7D Net Hospitalizations / 7D Total New Cases
(aggregate of 50 states + Washington, D.C.)



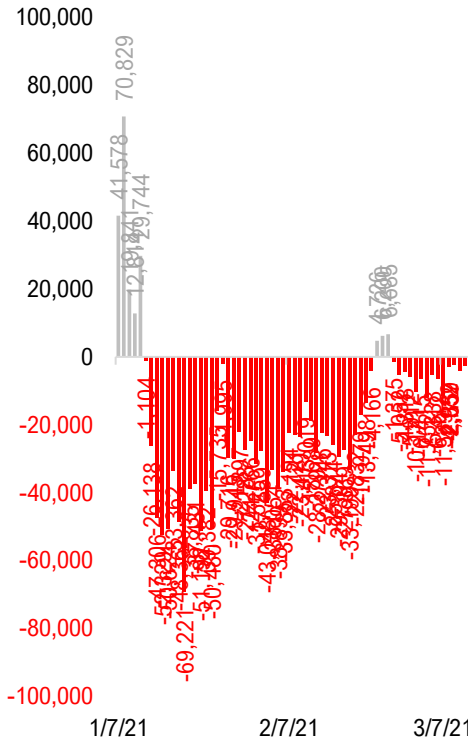
#10: US Daily New Fatalities...

US daily COVID-19 Fatalities

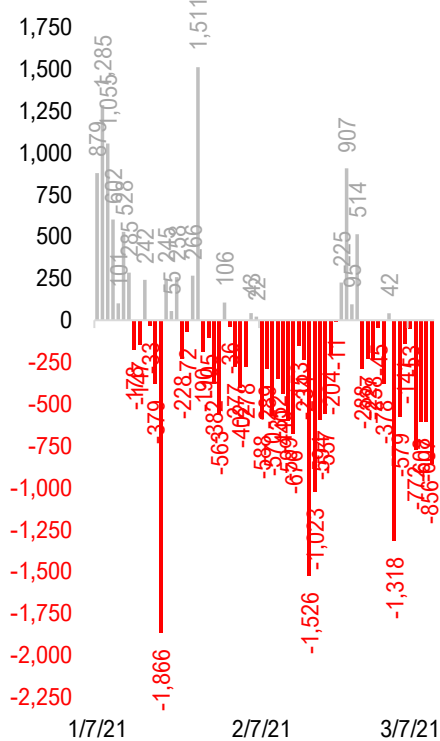


#11: Rolling 7-Day Change in the Key Metrics... (Past 8 Weeks)

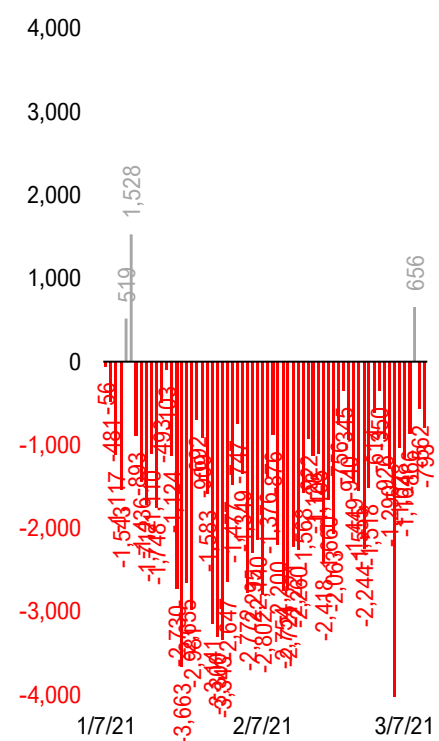
Daily New Cases
(8/10-8/23 ex-CA; 9/4-9/5 ex-IL)



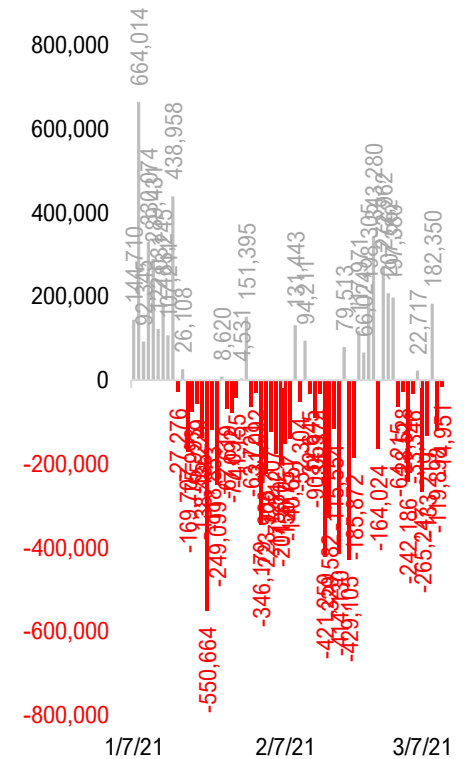
Daily Deaths



Daily Net Hospitalization
(Red = more discharge than admission)

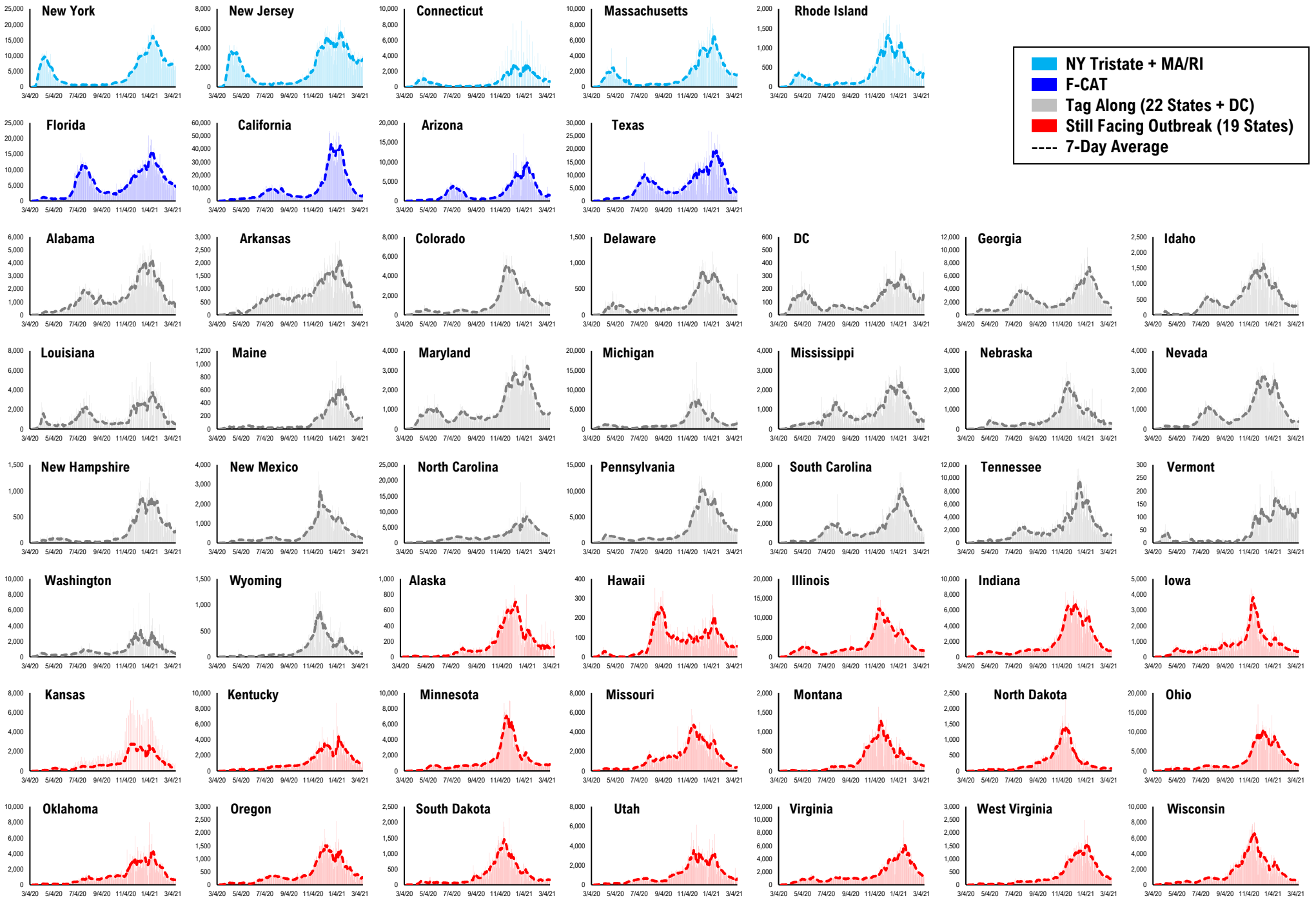


Daily Tests

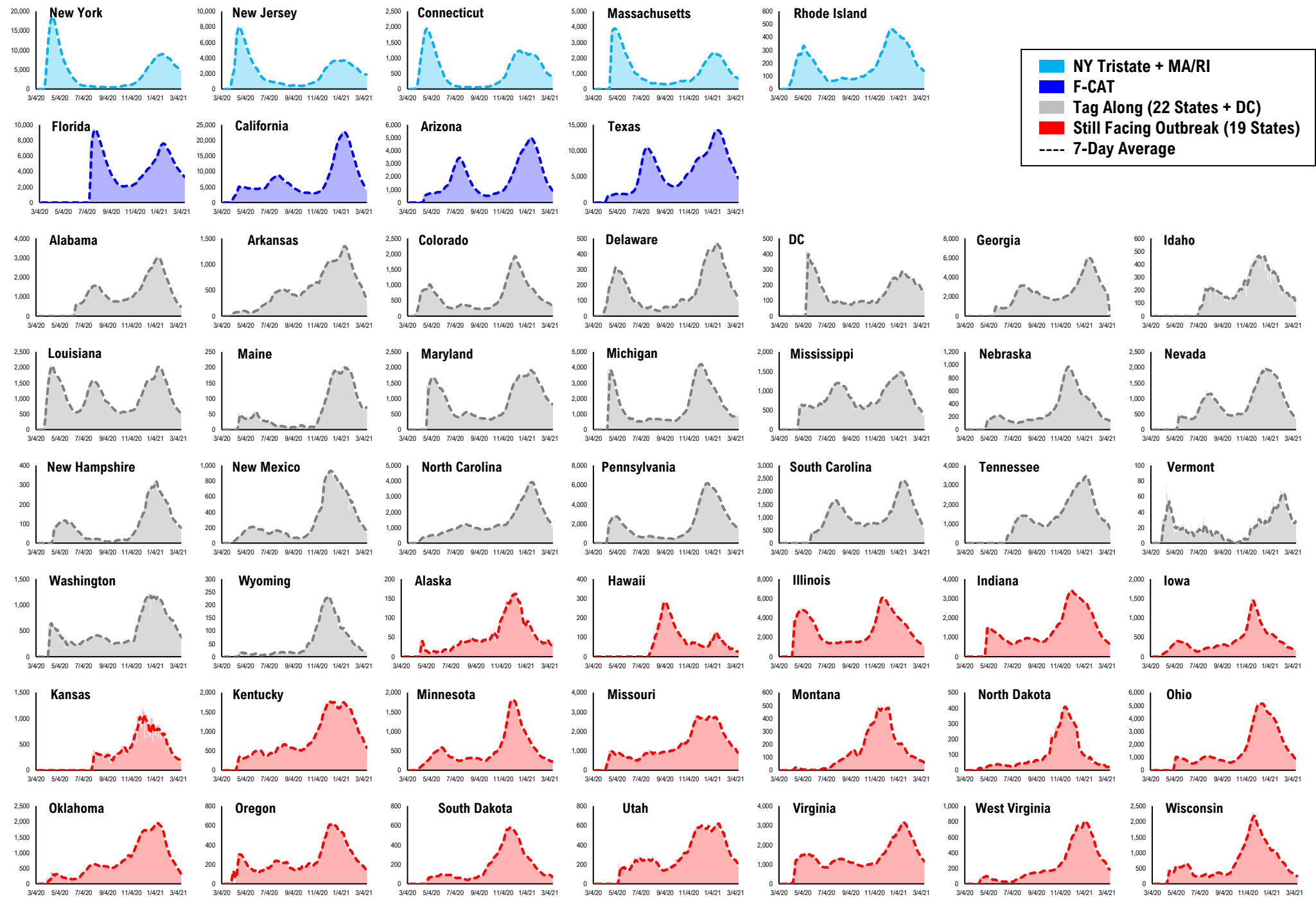


* Ignored California between 8/10 and 8/23, due to its data glitch caused 300,000-case backlog
Source: Fundstrat, COVID-19 Tracking Project, State Department of Health

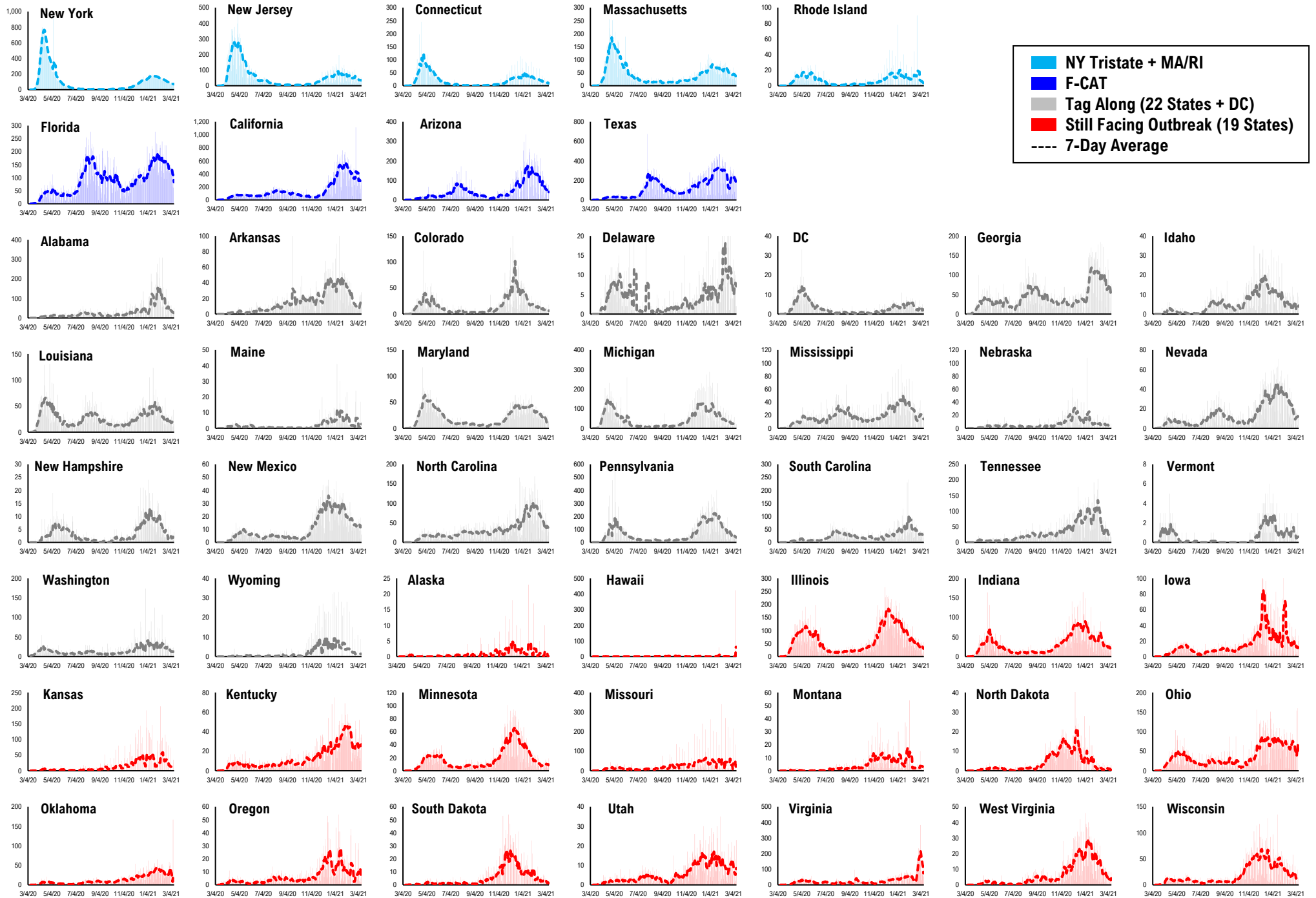
#12: Daily New Cases by States...



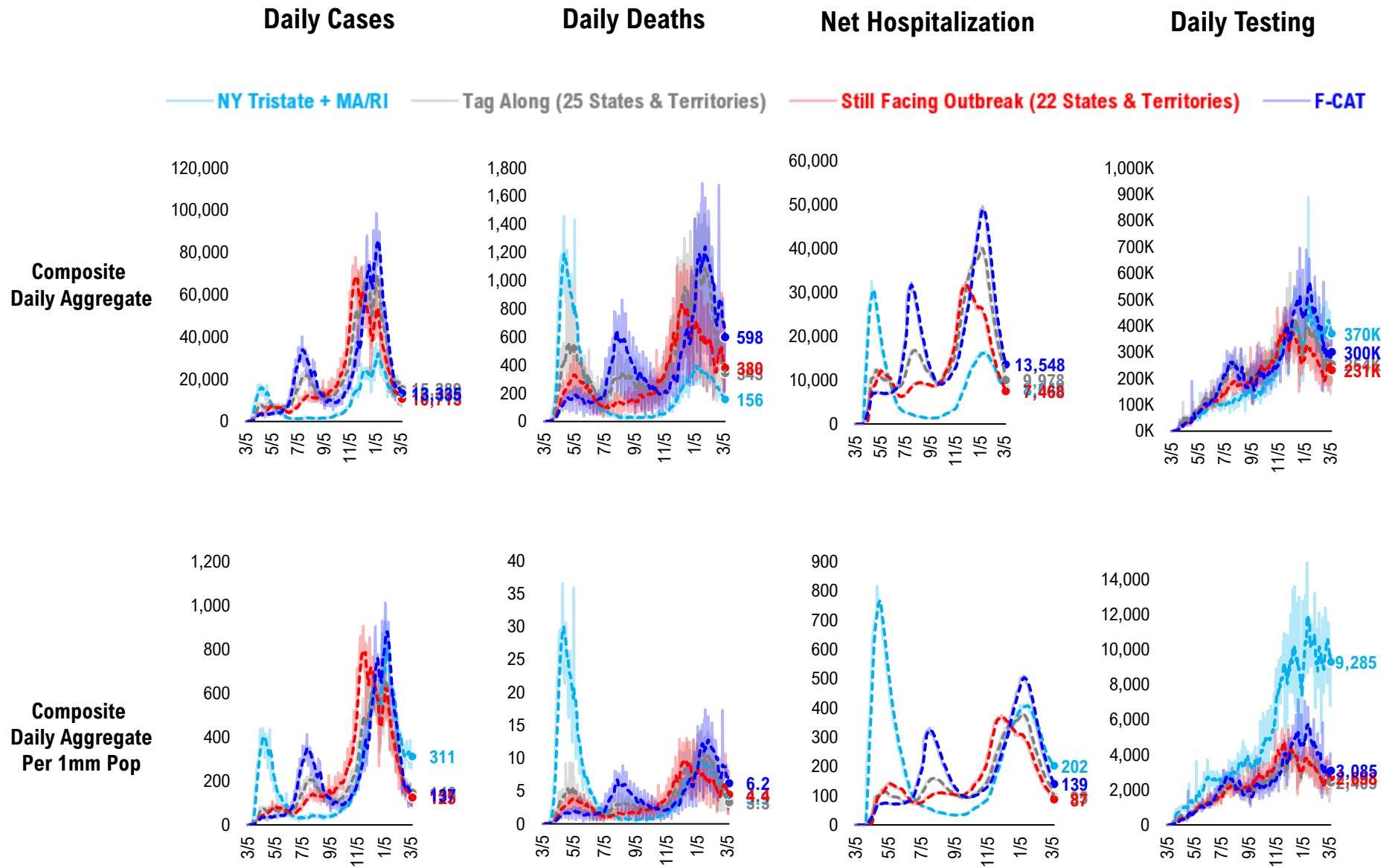
#13: Current Hospitalizations by States...



#14: Daily New Deaths by States...

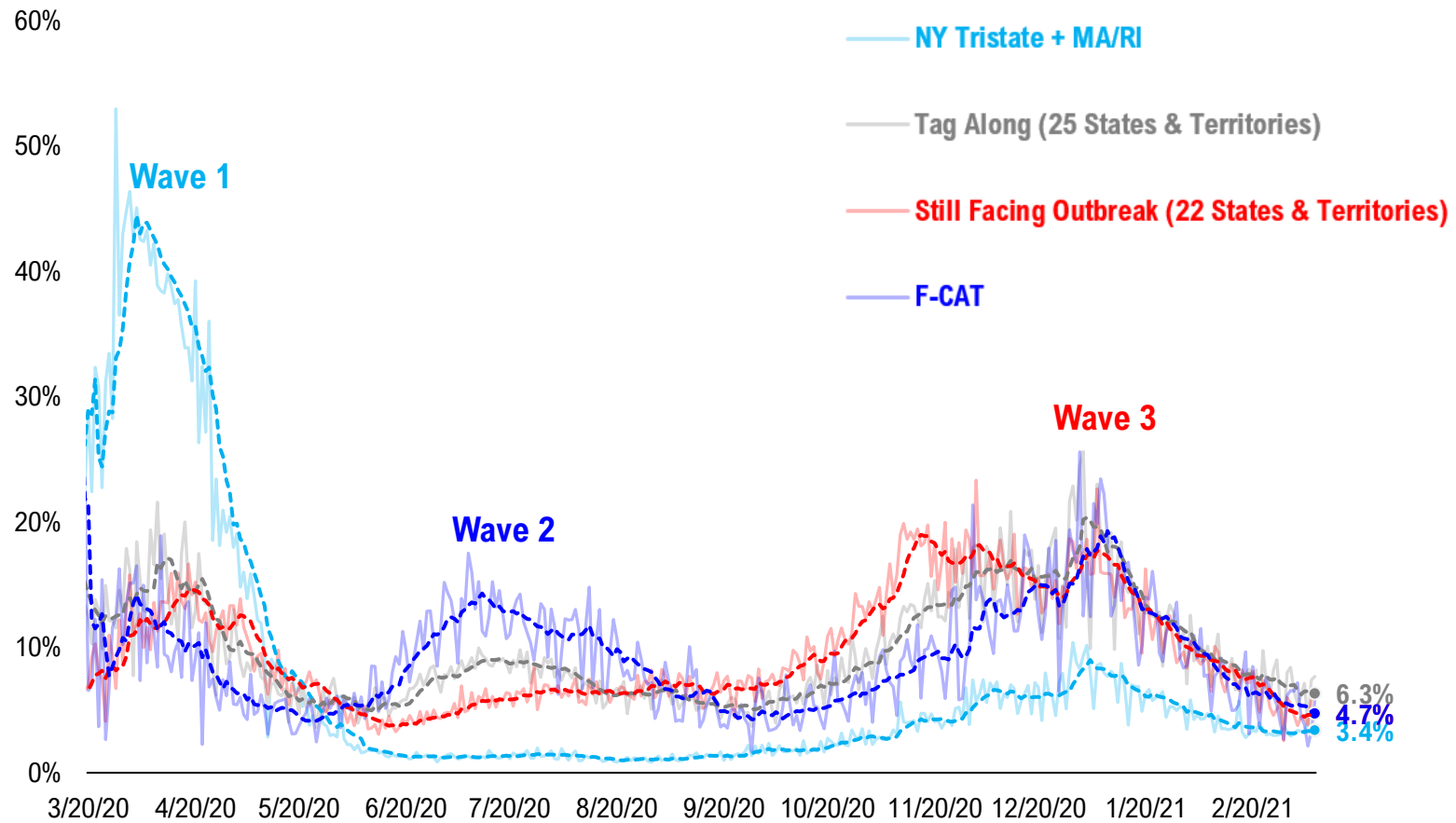


#15: State COVID-19 situation by Tier...

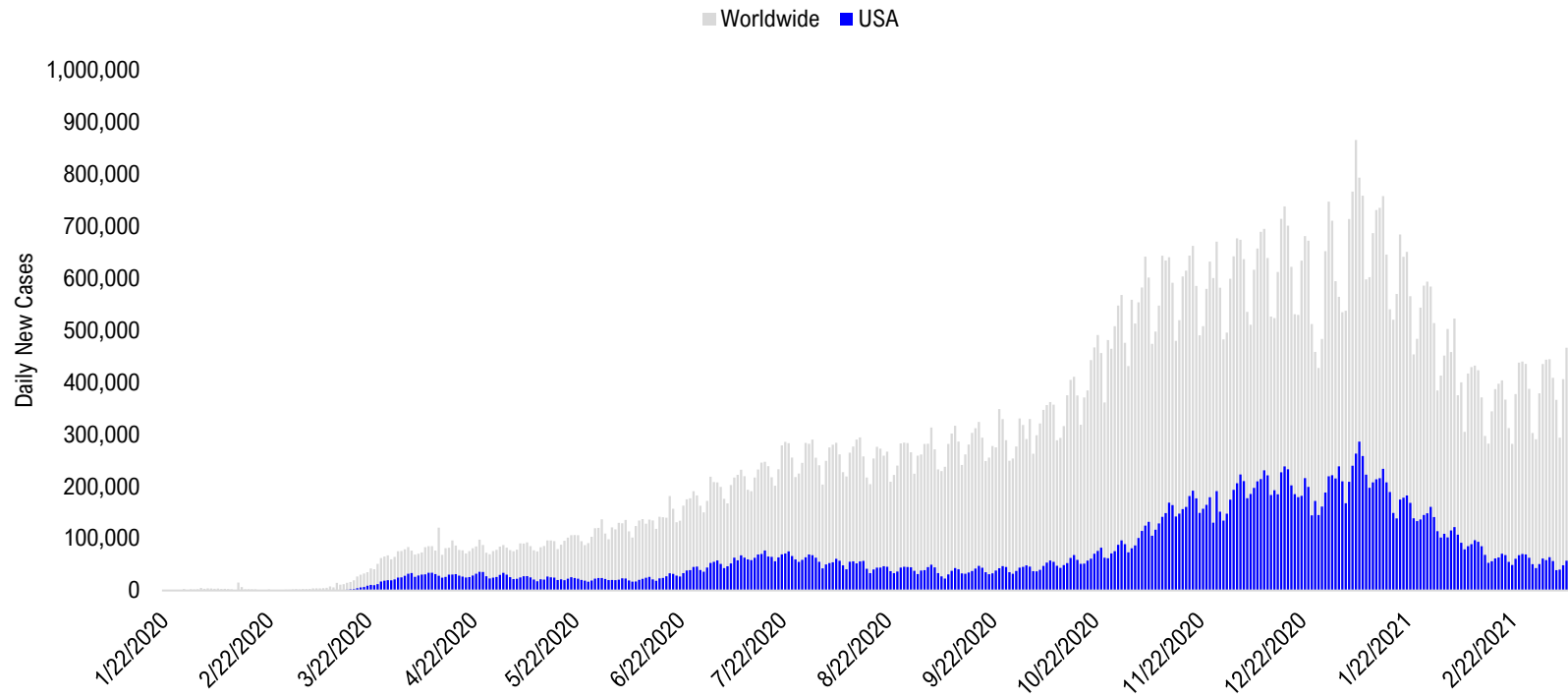


#16: State COVID-19 Daily Positivity Rate by Tier...

Composite Daily Positivity Rate



#17: Global COVID-19 Situation at a Glance...



Oct 23	Nov 6	Nov 20	Dec 4	Dec 18	Jan 1	Jan 15	Jan 29	Feb 12	Feb 26	Mar 10
Europe 223,800	Europe 312,557	Europe 279,289	Europe 258,867	Europe 282,868	Europe 275,313	Europe 266,474	Europe 218,592	Europe 162,010	Europe 179,492	Europe 163,839
US + Canada 71,893	US + Canada 116,878	US + Canada 182,604	US + Canada 213,733	US + Canada 239,407	US + Canada 224,144	US + Canada 228,083	US + Canada 155,907	Latin America 98,399	Latin America 109,270	Latin America 94,332
Latin America 69,395	Latin America 59,340	Latin America 68,233	Latin America 88,682	Latin America 108,004	Latin America 96,926	Latin America 139,455	Latin America 122,769	US + Canada 95,968	US + Canada 72,051	US + Canada 51,828
Pakistan + India + Bangladesh 56,907	Pakistan + India + Bangladesh 52,404	Pakistan + India + Bangladesh 50,856	Pakistan + India + Bangladesh 41,815	Pakistan + India + Bangladesh 28,277	Africa 29,285	Africa 33,021	Asia ex- India+Pakistan 28,260	Asia ex- India+Pakistan 18,796	Pakistan + India + Bangladesh 18,443	Pakistan + India + Bangladesh 21,445
Asia ex- India+Pakistan 15,237	Africa 13,699	Asia ex- India+Pakistan 15,309	Asia ex- India+Pakistan 17,499	Africa 20,279	Asia ex- India+Pakistan 19,749	Asia ex- India+Pakistan 27,255	Africa 20,015	Pakistan + India + Bangladesh 13,206	Asia ex- India+Pakistan 16,127	Asia ex- India+Pakistan 13,656
Africa 10,618	Asia ex- India+Pakistan 13,638	Africa 14,984	Africa 16,694	Asia ex- India+Pakistan 17,898	Pakistan + India + Bangladesh 17,406	Pakistan + India + Bangladesh 19,368	Pakistan + India + Bangladesh 16,944	Africa 12,888	Africa 11,281	Africa 9,170

Disclosures

This research is for the clients of FS Insight only. For important disclosures and rating histories regarding sectors or companies that are the subject of this report, please contact your sales representative or FS Insight at 150 East 52nd Street, New York, NY, 10022 USA.

Analyst Certification (Reg AC)

Thomas J. Lee, the research analyst denoted by an “AC” on the cover of this report, hereby certifies that all of the views expressed in this report accurately reflect his personal views, which have not been influenced by considerations of the firm’s business or client relationships.

Neither I, nor a member of my household is an officer, director, or advisory board member of the issuer(s) or has another significant affiliation with the issuer(s) that is/are the subject of this research report. There is a possibility that we will from time to time have long or short positions in, and buy or sell, the securities or derivatives, if any, referred to in this research

Conflicts of Interest

This research contains the views, opinions and recommendations of FS Insight . As of the time of writing and publication of this presentation, FS Insight does not know of, or have reason to know of any material conflicts of interest at the time of the publication of this presentation. The Company has no contractual relationship, nor have we received any compensation from any of the companies listed in this research report.

Analyst Industry/Sector Views

Positive (+): The analyst expects the performance of his industry/sector coverage universe over the next 6-18 months to be attractive vs. the relevant broad market benchmark, being the S&P 500 for North America.

Neutral (N): The analyst expects the performance of his or her industry/sector coverage universe over the next 6-18 months to be in line with the relevant broad market benchmark, being the S&P 500 for North America.

Negative (-): The analyst expects his or her industry coverage universe over the next 6-18 months to underperform vs. the relevant broad market benchmark, being the S&P 500 for North America.

General Disclosures

FS Insight is an independent research company and is not a registered investment advisor and is not acting as a broker dealer under any federal or state securities laws. FS Insight is a member of IRC Securities’ Research Prime Services Platform. IRC Securities is a FINRA registered broker-dealer that is focused on supporting the independent research industry. Certain personnel of FS Insight (i.e. Research Analysts) are registered representatives of IRC Securities, a FINRA member firm registered as a broker-dealer with the Securities and Exchange Commission and certain state securities regulators. As registered representatives and independent contractors of IRC Securities, such personnel may receive commissions paid to or shared with IRC Securities for transactions placed by FS Insight clients directly with IRC Securities or with securities firms that may share commissions with IRC Securities in accordance with applicable SEC and FINRA requirements. IRC Securities does not distribute the research of FS Insight , which is available to select institutional clients that have engaged FS Insight .

As registered representatives of IRC Securities our analysts must follow IRC Securities’ Written Supervisory Procedures. Notable compliance policies include (1) prohibition of insider trading or the facilitation thereof, (2) maintaining client confidentiality, (3) archival of electronic communications, and (4) appropriate use of electronic communications, amongst other compliance related policies.

FS Insight does not have the same conflicts that traditional sell-side research organizations have because FS Insight (1) does not conduct any investment banking activities, (2) does not manage any investment funds, and (3) our clients are only institutional investors.

This research is for the clients of FS Insight only. Additional information is available upon request. Information has been obtained from sources believed to be reliable but FS Insight does not warrant its completeness or accuracy except with respect to any disclosures relative to FS Insight and the analyst’s involvement (if any) with any of the subject companies of the research. All pricing is as of the market close for the securities discussed, unless otherwise stated. Opinions and estimates constitute our judgment as of the date of this material and are subject to change without notice. Past performance is not indicative of future results. This material is not intended as an offer or solicitation for the purchase or sale of any financial instrument. The opinions and recommendations herein do not take into account individual client circumstances, risk tolerance, objectives, or needs and are not intended as recommendations of particular securities, financial instruments or strategies. The recipient of this report must make its own independent decision regarding any securities or financial instruments mentioned herein. Except in circumstances where FS Insight expressly agrees otherwise in writing, FS Insight is not acting as a municipal advisor and the opinions or views contained herein are not intended to be, and do not constitute, advice, including within the meaning of Section 15B of the Securities Exchange Act of 1934. All research reports are disseminated and available to all clients simultaneously through electronic publication to our internal client website, FS Insight .com. Not all research content is redistributed to our clients or made available to third-party aggregators or the media. Please contact your sales representative if you would like to receive any of our research publications.

Copyright 2021 FS Insight LLC. All rights reserved. No part of this material may be reprinted, sold or redistributed without the prior written consent of FS Insight LLC.