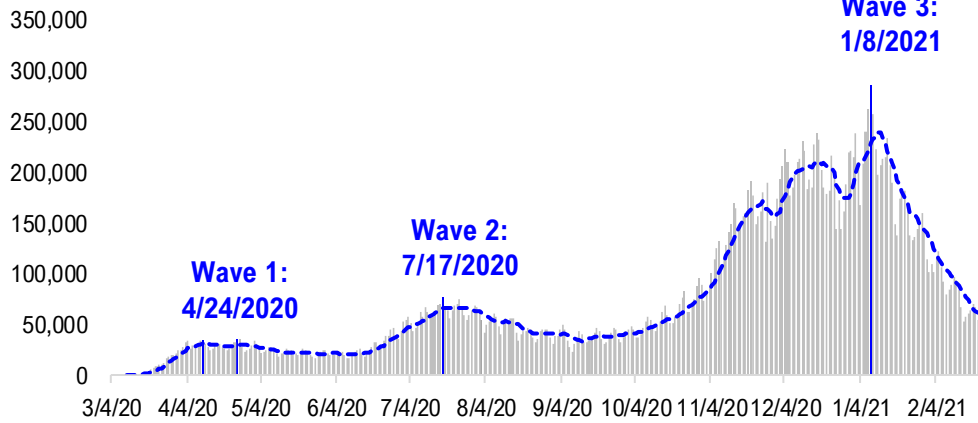


# FSInsight Daily COVID-19 Chartbook

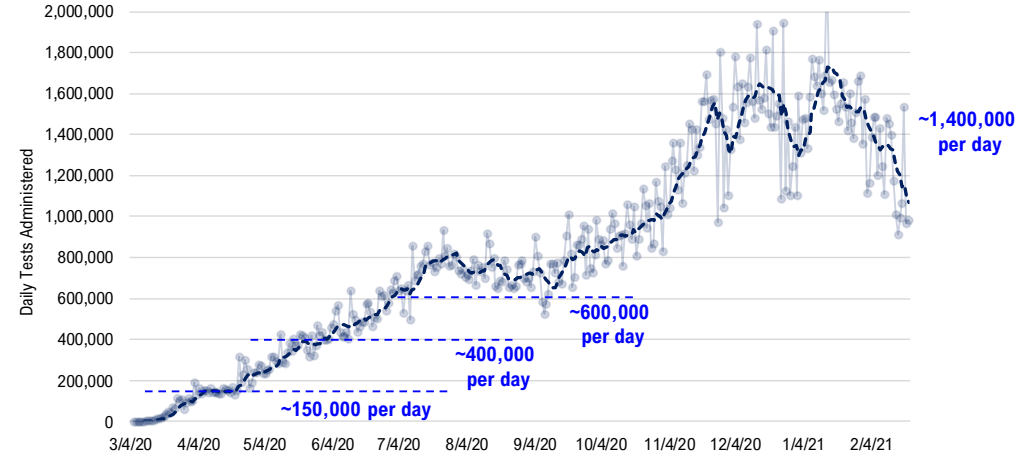


# #1: USA COVID-19 Situation at a Glance...

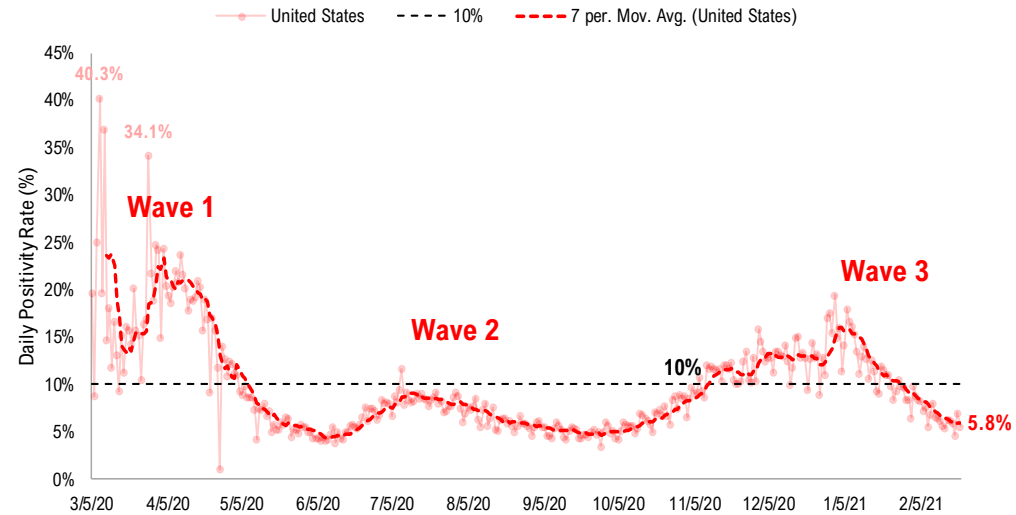
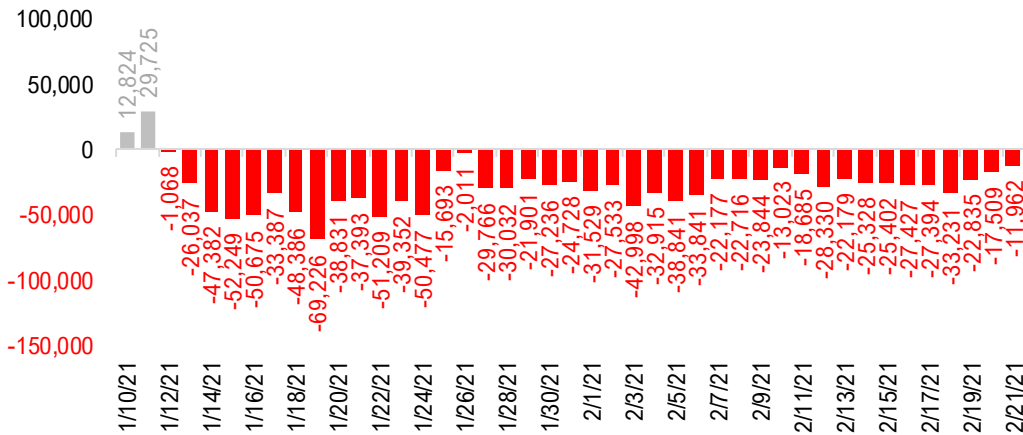
**US daily new cases**



**USA total COVID-19 tests administered**

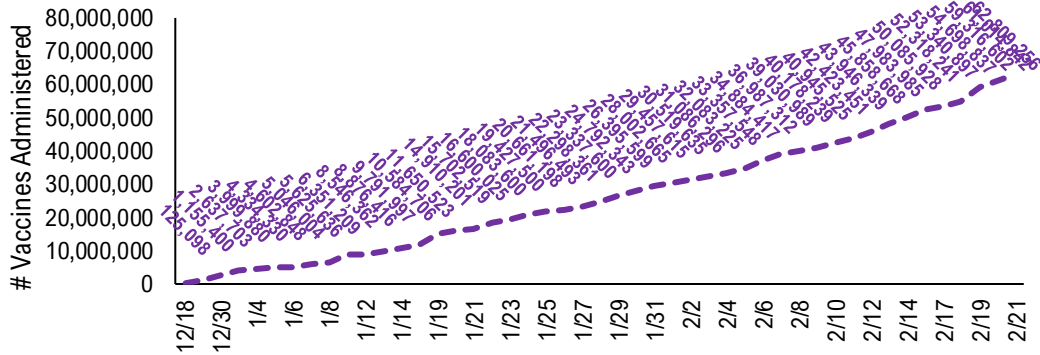


**US daily new cases rolling 7D delta**

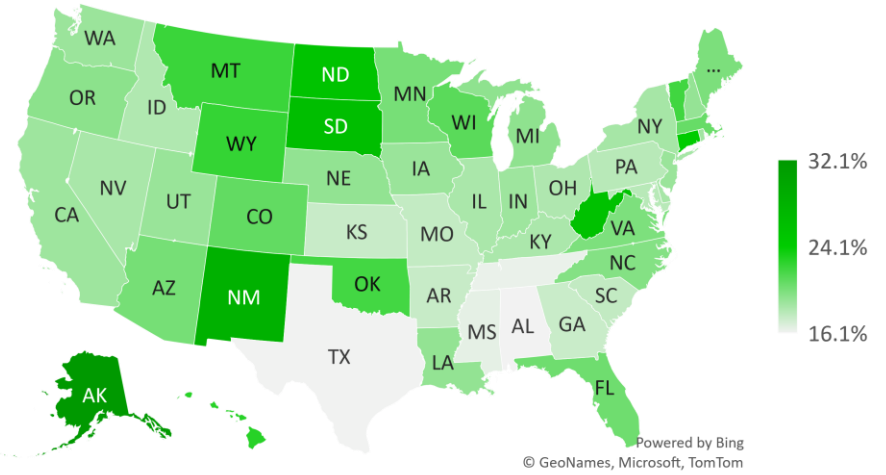


# #2: USA COVID-19 Vaccination Progress at a Glance...

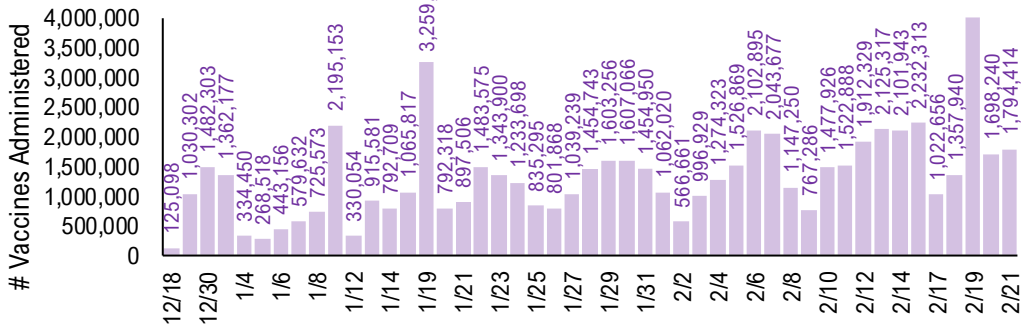
### Cumulative Vaccines Administered



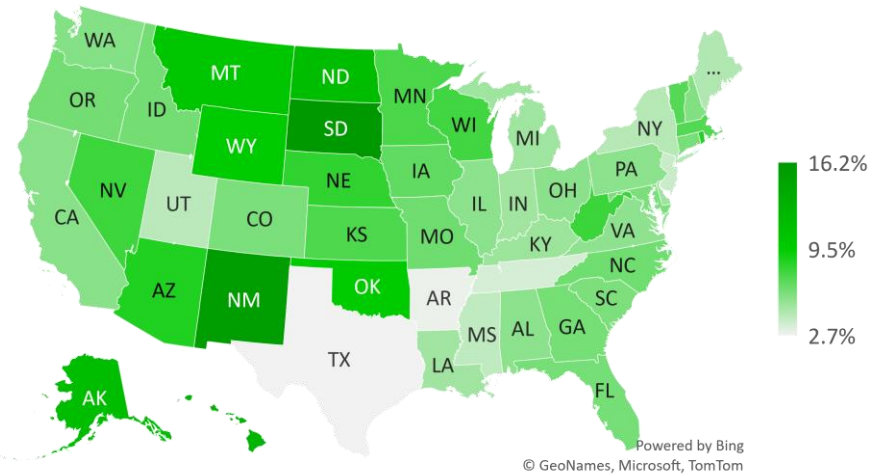
### Cumulative Vaccines Administered as % State Population



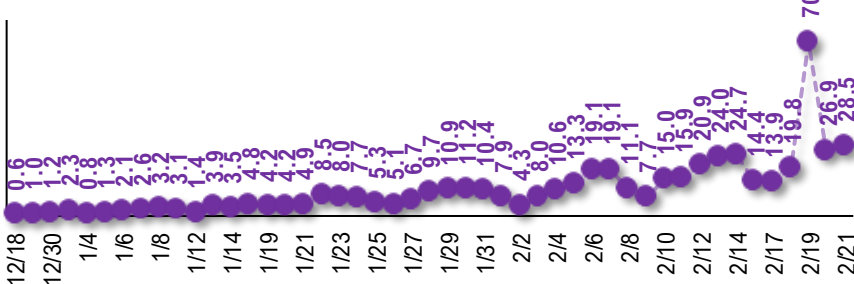
### Daily Vaccines Administered



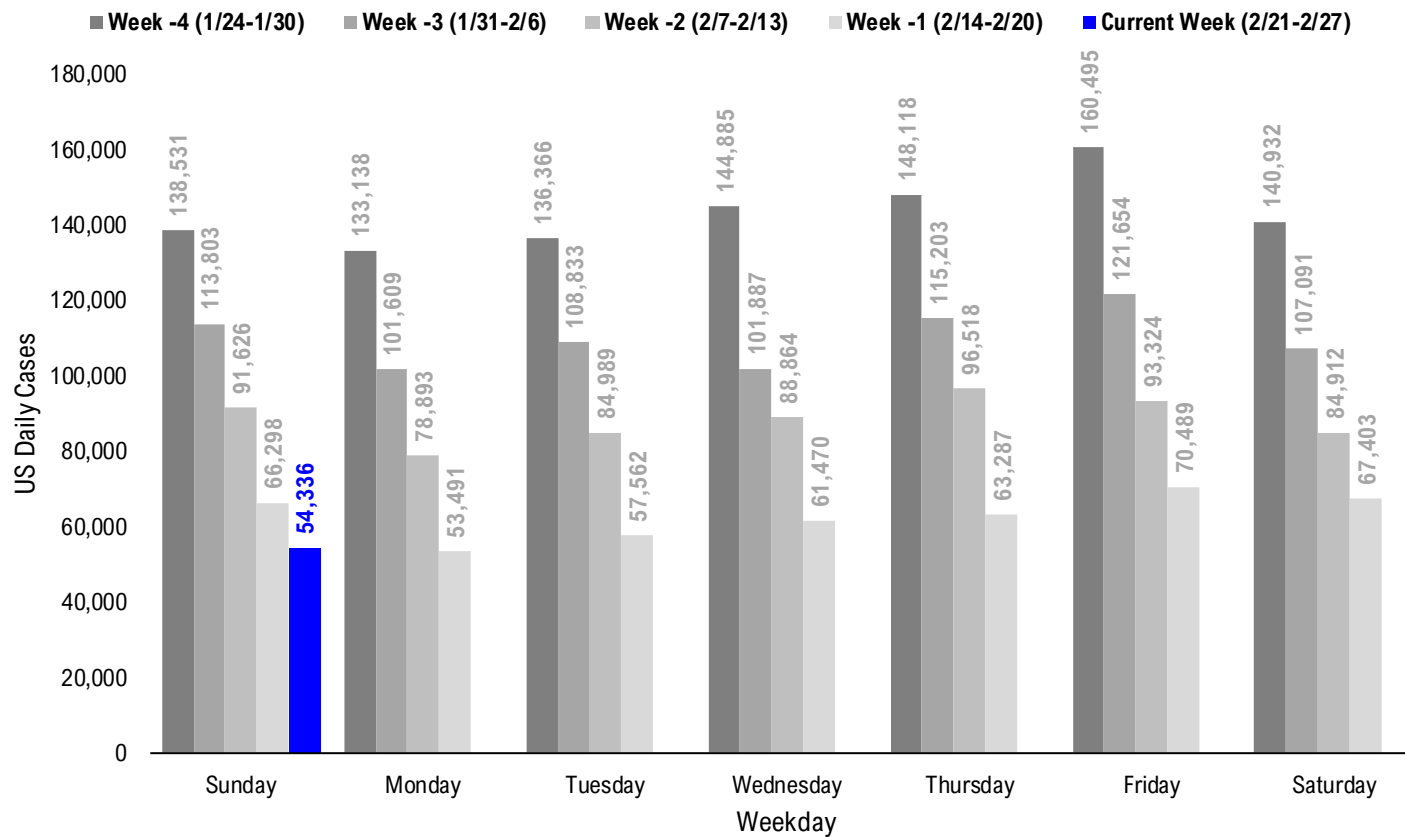
### Implied Weekly Vaccines Administered as % State Population



### Daily Vaccinations / Daily Cases (7D Avg)



# #3: USA COVID-19 Daily Cases Weekday Seasonality (Past 4 Weeks) ...



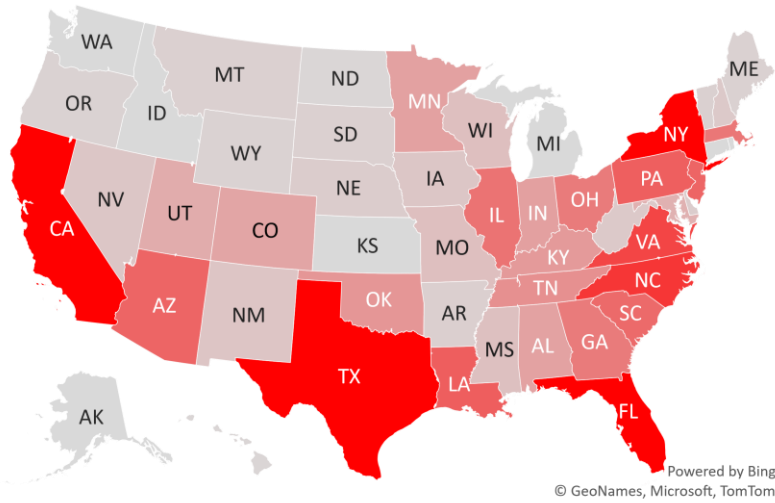
# #4: USA State COVID-19 Situation at a Glance...

|                   | Sorted Daily Cases |          | Daily Cases (3D avg) per 1mm residents |          |      |          | Hospitalization |                          |                        |                                       |
|-------------------|--------------------|----------|--|----------|------|----------|-----------------|--------------------------|------------------------|---------------------------------------|
|                   | % US Pop           | % US GDP | 2/21                                   | 7D Delta | 2/21 | 7D Delta | # Days          | % Decline in Daily Cases | 7D Net Hospitalization | 7D Net Hospitalization / 7D New Cases |
|                   |                    |          |  |          |      |          |                 |                          |                        |                                       |
| United States     | 100%               | 100%     | 54.336                                 | -11,962  | 195  | -53      | 43              | -76%                     | -10.864                | -2.5%                                 |
| <b>States:</b>    |                    |          |  |          |      |          |                 |                          |                        |                                       |
| 1 California      | 11.9%              | 14.6%    | 6,760                                  | -2,082   | 171  | -68      | 42              | -87%                     | -2,323                 | (5.5%)                                |
| 2 New York        | 5.9%               | 8.1%     | 6,610                                  | -1,706   | 394  | -42      | 43              | -57%                     | -829                   | (1.7%)                                |
| 3 Florida         | 6.5%               | 5.0%     | 5,065                                  | -371     | 295  | -24      | 44              | -67%                     | -512                   | (1.2%)                                |
| 4 Texas           | 8.7%               | 8.8%     | 3,617                                  | -2,108   | 123  | -145     | 45              | -84%                     | -961                   | (4.3%)                                |
| 5 North Carolina  | 3.2%               | 2.7%     | 2,541                                  | -629     | 293  | -70      | 43              | -71%                     | -342                   | (1.6%)                                |
| 6 Virginia        | 2.6%               | 2.6%     | 2,303                                  | -272     | 243  | -108     | 34              | -74%                     | -358                   | (2.5%)                                |
| 7 Louisiana       | 1.4%               | 1.3%     | 1,909                                  | +597     | 168  | -9       | 45              | -85%                     | -119                   | (2.8%)                                |
| 8 Pennsylvania    | 3.9%               | 3.8%     | 1,906                                  | -665     | 195  | -82      | 78              | -79%                     | -389                   | (2.1%)                                |
| 9 New Jersey      | 2.7%               | 3.0%     | 1,809                                  | +28      | 264  | -47      | 43              | -62%                     | -384                   | (2.2%)                                |
| 10 Arizona        | 2.2%               | 1.7%     | 1,804                                  | -143     | 264  | -18      | 49              | -84%                     | -615                   | (5.7%)                                |
| 11 South Carolina | 1.6%               | 1.1%     | 1,732                                  | +276     | 399  | -31      | 42              | -70%                     | -256                   | (1.8%)                                |
| 12 Illinois       | 3.8%               | 4.2%     | 1,585                                  | -46      | 151  | -16      | 100             | -86%                     | -309                   | (2.5%)                                |
| 13 Massachusetts  | 2.1%               | 2.8%     | 1,520                                  | -362     | 257  | -52      | 43              | -77%                     | -198                   | (1.7%)                                |
| 14 Georgia        | 3.2%               | 2.9%     | 1,463                                  | -246     | 189  | -29      | 42              | -77%                     | -493                   | (3.5%)                                |
| 15 Ohio           | 3.5%               | 3.3%     | 1,461                                  | -348     | 182  | -44      | 73              | -82%                     | -223                   | (1.5%)                                |
| 16 Tennessee      | 2.1%               | 1.8%     | 1,129                                  | -218     | 187  | -76      | 65              | -88%                     | -118                   | (1.5%)                                |
| 17 Oklahoma       | 1.2%               | 1.0%     | 1,036                                  | -230     | 242  | -106     | 42              | -82%                     | -135                   | (2.3%)                                |
| 18 Kentucky       | 1.3%               | 1.0%     | 979                                    | -729     | 318  | +28      | 44              | -72%                     | -117                   | (1.4%)                                |
| 19 Indiana        | 2.0%               | 1.8%     | 881                                    | -337     | 165  | -27      | 78              | -86%                     | -161                   | (2.4%)                                |
| 20 Minnesota      | 1.7%               | 1.8%     | 879                                    | +103     | 162  | -1       | 83              | -88%                     | -44                    | (0.8%)                                |
| 21 Alabama        | 1.5%               | 1.1%     | 857                                    | -218     | 168  | -60      | 45              | -84%                     | -269                   | (4.6%)                                |
| 22 Colorado       | 1.7%               | 1.8%     | 802                                    | -51      | 185  | -55      | 92              | -82%                     | -45                    | (0.7%)                                |
| 23 Utah           | 1.0%               | 0.9%     | 701                                    | -9       | 243  | -39      | 44              | -81%                     | -44                    | (0.8%)                                |
| 24 Maryland       | 1.8%               | 2.0%     | 618                                    | -229     | 132  | -40      | 42              | -78%                     | -193                   | (3.6%)                                |
| 25 Missouri       | 1.8%               | 1.5%     | 410                                    | -79      | 84   | -26      | 99              | -90%                     | -204                   | (5.4%)                                |
| 26 Wisconsin      | 1.8%               | 1.6%     | 403                                    | -100     | 106  | -19      | 100             | -92%                     | -49                    | (1.1%)                                |
| 27 Mississippi    | 0.9%               | 0.6%     | 390                                    | -703     | 123  | -187     | 43              | -87%                     | -85                    | (2.7%)                                |
| 28 New Mexico     | 0.6%               | 0.5%     | 314                                    | +32      | 167  | -31      | 93              | -89%                     | -50                    | (2.3%)                                |

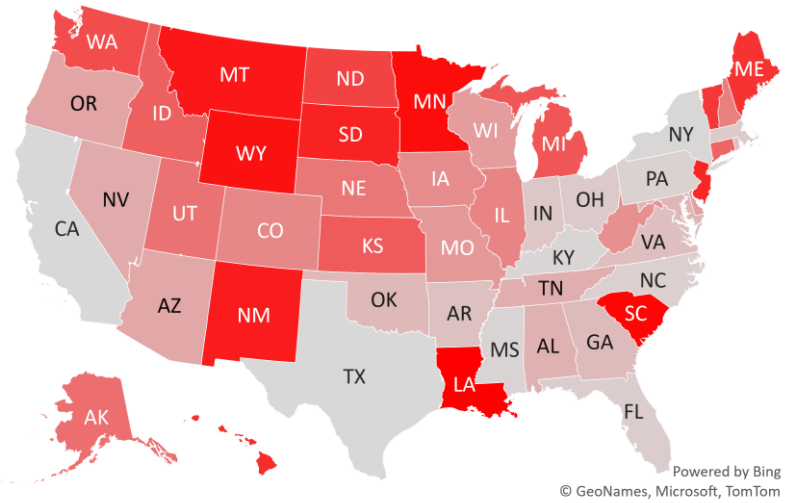
|                         | Sorted Daily Cases |          | Daily Cases (3D avg) per 1mm residents |          |      |          | Hospitalization |                          |                        |                                       |
|-------------------------|--------------------|----------|--|----------|------|----------|-----------------|--------------------------|------------------------|---------------------------------------|
|                         | % US Pop           | % US GDP | 2/21                                   | 7D Delta | 2/21 | 7D Delta | # Days          | % Decline in Daily Cases | 7D Net Hospitalization | 7D Net Hospitalization / 7D New Cases |
|                         |                    |          |  |          |      |          |                 |                          |                        |                                       |
| United States           | 100%               | 100%     | 54.336                                 | -11,962  | 195  | -53      | 43              | -76%                     | -10.864                | -2.5%                                 |
| <b>States:</b>          |                    |          |  |          |      |          |                 |                          |                        |                                       |
| 29 Iowa                 | 1.0%               | 0.9%     | 302                                    | -53      | 110  | -30      | 100             | -91%                     | -11                    | (0.4%)                                |
| 30 Nevada               | 0.9%               | 0.8%     | 301                                    | -211     | 118  | -94      | 43              | -88%                     | -188                   | (3.2%)                                |
| 31 West Virginia        | 0.5%               | 0.4%     | 252                                    | -54      | 159  | -58      | 49              | -85%                     | -38                    | (1.9%)                                |
| 32 New Hampshire        | 0.4%               | 0.4%     | 252                                    | -28      | 249  | -39      | 48              | -69%                     | -17                    | (0.6%)                                |
| 33 Puerto Rico          | 1.0%               | 0.5%     | 203                                    | -66      | 50   | -35      | 64              | -86%                     | 1                      | 0.1%                                  |
| 34 Delaware             | 0.3%               | 0.4%     | 201                                    | -130     | 301  | -85      | 43              | -68%                     | -41                    | (2.4%)                                |
| 35 Nebraska             | 0.6%               | 0.6%     | 198                                    | -11      | 156  | -228     | 94              | -89%                     | -34                    | (2.0%)                                |
| 36 Arkansas             | 0.9%               | 0.6%     | 160                                    | -273     | 72   | -92      | 42              | -91%                     | -92                    | (5.9%)                                |
| 37 South Dakota         | 0.3%               | 0.3%     | 139                                    | +29      | 163  | -9       | 99              | -92%                     | 3                      | 0.3%                                  |
| 38 Montana              | 0.3%               | 0.2%     | 138                                    | +34      | 212  | +37      | 98              | -84%                     | -14                    | (1.0%)                                |
| 39 Vermont              | 0.2%               | 0.2%     | 134                                    | +18      | 184  | -45      | 43              | -46%                     | -10                    | (1.2%)                                |
| 40 Maine                | 0.4%               | 0.3%     | 130                                    | +20      | 101  | -16      | 37              | -83%                     | -26                    | (2.7%)                                |
| 41 Wyoming              | 0.2%               | 0.2%     | 112                                    | +62      | 152  | +62      | 94              | -91%                     | -13                    | (2.0%)                                |
| 42 Oregon               | 1.3%               | 1.2%     | 107                                    | -140     | 87   | -7       | 77              | -79%                     | -20                    | (0.8%)                                |
| 43 District of Columbia | 0.2%               | 0.7%     | 95                                     | -27      | 164  | -18      | 42              | -67%                     | -1                     | (0.1%)                                |
| 44 Hawaii               | 0.4%               | 0.5%     | 67                                     | +21      | 41   | -2       | 176             | -80%                     | 2                      | 0.6%                                  |
| 45 North Dakota         | 0.2%               | 0.3%     | 49                                     | +3       | 106  | -0       | 99              | -96%                     | 2                      | 0.3%                                  |
| 46 Northern Mariana     | 0.0%               | 0.0%     | 8                                      | +8       | 47   | +41      | 117             | -33%                     | 0                      | 0.0%                                  |
| 47 Guam                 | 0.0%               | 0.0%     | 4                                      | +1       | 30   | +12      | 103             | -97%                     | -1                     | (4.0%)                                |
| 48 Washington           | 2.3%               | 2.7%     | 0                                      | +0       | 67   | -4       | 88              | -88%                     | -96                    | (2.0%)                                |
| 49 U.S. Virgin Islands  | 0.0%               | 0.0%     | 0                                      | +0       | 53   | -6       | 184             | -87%                     | 0                      | 0.0%                                  |
| 50 Rhode Island         | 0.3%               | 0.3%     | 0                                      | -320     | 90   | -289     | 78              | -94%                     | -45                    | (2.9%)                                |
| 51 Michigan             | 3.0%               | 2.6%     | 0                                      | +0       | 61   | -7       | 95              | -93%                     | -164                   | (2.9%)                                |
| 52 Kansas               | 0.9%               | 0.8%     | 0                                      | +0       | 242  | +104     | 88              | -84%                     | -58                    | (1.2%)                                |
| 53 Idaho                | 0.5%               | 0.4%     | 0                                      | +0       | 95   | -18      | 73              | -92%                     | -38                    | (2.3%)                                |
| 54 Connecticut          | 1.1%               | 1.3%     | 0                                      | +0       | 112  | +34      | 39              | -92%                     | -139                   | (2.4%)                                |
| 55 American Samoa       | 0.0%               | 0.0%     | 0                                      | +0       | 0    | +0       | 0               | 0%                       | 0                      |                                       |
| 56 Alaska               | 0.2%               | 0.3%     | 0                                      | +0       | 86   | +19      | 78              | -92%                     | -1                     | (0.1%)                                |

# #5: USA COVID-19 Heat Map...

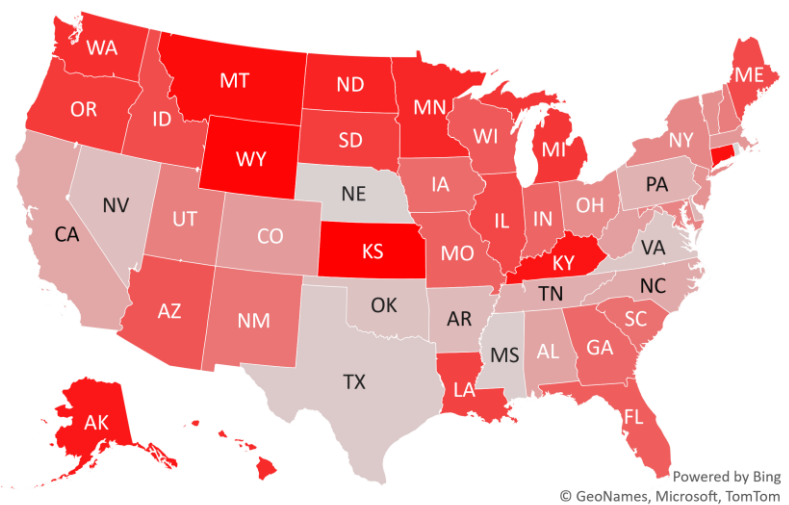
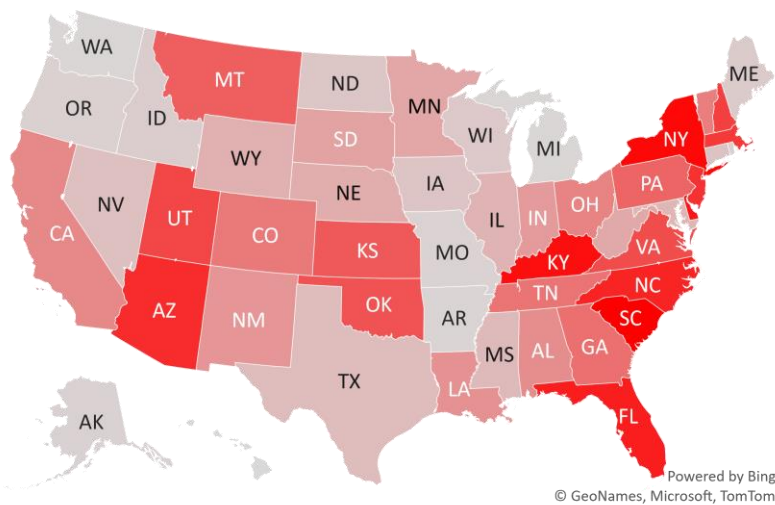
### Daily Case Increases



### 7D Delta in Daily New Cases



### Daily Case Increases per 1mm Resident (3D Avg)



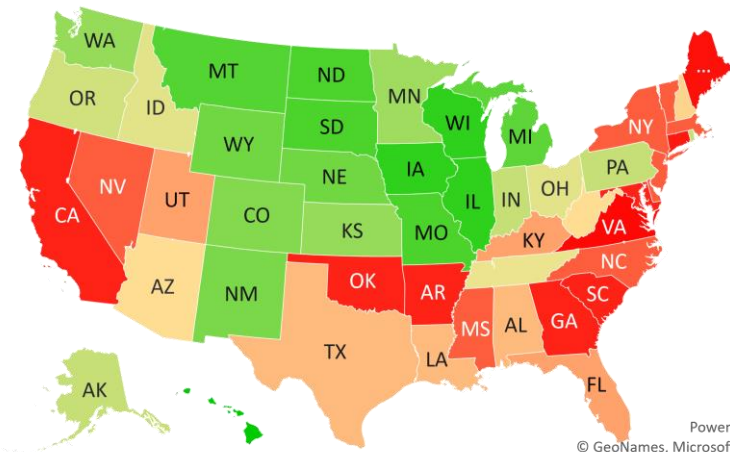
# #6: # of Days since Daily Case Peaked by States...

## # Days since Daily Cases (3D Avg) Peak (as of 2/21)

| Sorted                  |           |         |                |          |
|-------------------------|-----------|---------|----------------|----------|
|                         | Peak Date | 2/21/21 | % off the Peak | % US Pop |
| United States           | 1/9/21    | 43      | -76%           | 100%     |
| <b>States:</b>          |           |         |                |          |
| U.S. Virgin Islands     | 8/21/20   | 184     | -87%           | 0.0%     |
| Hawaii                  | 8/29/20   | 176     | -80%           | 0.4%     |
| Northern Mariana Island | 10/27/20  | 117     | -33%           | 0.0%     |
| Guam                    | 11/10/20  | 103     | -97%           | 0.0%     |
| Wisconsin               | 11/13/20  | 100     | -92%           | 1.8%     |
| Illinois                | 11/13/20  | 100     | -86%           | 3.8%     |
| Iowa                    | 11/13/20  | 100     | -91%           | 1.0%     |
| South Dakota            | 11/14/20  | 99      | -92%           | 0.3%     |
| North Dakota            | 11/14/20  | 99      | -96%           | 0.2%     |
| Missouri                | 11/14/20  | 99      | -90%           | 1.8%     |
| Montana                 | 11/15/20  | 98      | -84%           | 0.3%     |
| Michigan                | 11/18/20  | 95      | -93%           | 3.0%     |
| Wyoming                 | 11/19/20  | 94      | -91%           | 0.2%     |
| Nebraska                | 11/19/20  | 94      | -89%           | 0.6%     |
| New Mexico              | 11/20/20  | 93      | -89%           | 0.6%     |
| Colorado                | 11/21/20  | 92      | -82%           | 1.7%     |
| Washington              | 11/25/20  | 88      | -88%           | 2.3%     |
| Kansas                  | 11/25/20  | 88      | -84%           | 0.9%     |
| Minnesota               | 11/30/20  | 83      | -88%           | 1.7%     |
| Rhode Island            | 12/5/20   | 78      | -94%           | 0.3%     |
| Pennsylvania            | 12/5/20   | 78      | -79%           | 3.9%     |
| Indiana                 | 12/5/20   | 78      | -86%           | 2.0%     |
| Alaska                  | 12/5/20   | 78      | -92%           | 0.2%     |
| Oregon                  | 12/6/20   | 77      | -79%           | 1.3%     |
| Ohio                    | 12/10/20  | 73      | -82%           | 3.5%     |
| Idaho                   | 12/10/20  | 73      | -92%           | 0.5%     |
| Tennessee               | 12/18/20  | 65      | -88%           | 2.1%     |
| Puerto Rico             | 12/19/20  | 64      | -86%           | 1.0%     |

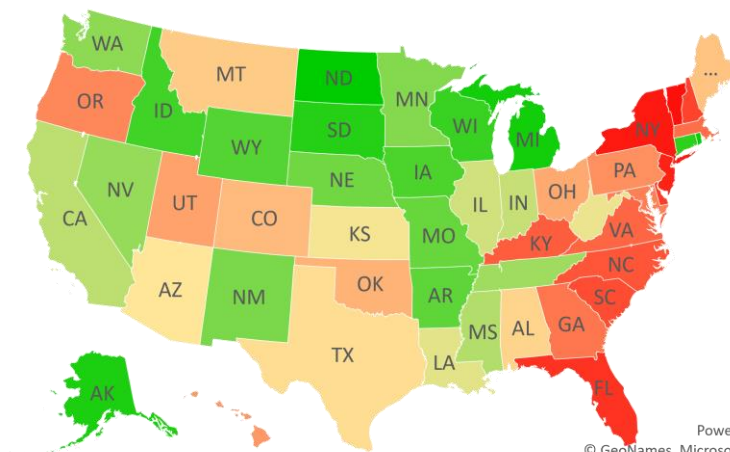
| Sorted               |           |         |                |          |
|----------------------|-----------|---------|----------------|----------|
|                      | Peak Date | 2/21/21 | % off the Peak | % US Pop |
| United States        | 1/9/21    | 43      | -76%           | 100%     |
| <b>States:</b>       |           |         |                |          |
| West Virginia        | 1/3/21    | 49      | -85%           | 0.5%     |
| Arizona              | 1/3/21    | 49      | -84%           | 2.2%     |
| New Hampshire        | 1/4/21    | 48      | -69%           | 0.4%     |
| Texas                | 1/7/21    | 45      | -84%           | 8.7%     |
| Louisiana            | 1/7/21    | 45      | -85%           | 1.4%     |
| Alabama              | 1/7/21    | 45      | -84%           | 1.5%     |
| Utah                 | 1/8/21    | 44      | -81%           | 1.0%     |
| Kentucky             | 1/8/21    | 44      | -72%           | 1.3%     |
| Florida              | 1/8/21    | 44      | -67%           | 6.5%     |
| Vermont              | 1/9/21    | 43      | -46%           | 0.2%     |
| New York             | 1/9/21    | 43      | -57%           | 5.9%     |
| Nevada               | 1/9/21    | 43      | -88%           | 0.9%     |
| New Jersey           | 1/9/21    | 43      | -62%           | 2.7%     |
| North Carolina       | 1/9/21    | 43      | -71%           | 3.2%     |
| Mississippi          | 1/9/21    | 43      | -87%           | 0.9%     |
| Massachusetts        | 1/9/21    | 43      | -77%           | 2.1%     |
| Delaware             | 1/9/21    | 43      | -68%           | 0.3%     |
| South Carolina       | 1/10/21   | 42      | -70%           | 1.6%     |
| Oklahoma             | 1/10/21   | 42      | -82%           | 1.2%     |
| Maryland             | 1/10/21   | 42      | -78%           | 1.8%     |
| Georgia              | 1/10/21   | 42      | -77%           | 3.2%     |
| District of Columbia | 1/10/21   | 42      | -67%           | 0.2%     |
| California           | 1/10/21   | 42      | -87%           | 11.9%    |
| Arkansas             | 1/10/21   | 42      | -91%           | 0.9%     |
| Connecticut          | 1/13/21   | 39      | -92%           | 1.1%     |
| Maine                | 1/15/21   | 37      | -83%           | 0.4%     |
| Virginia             | 1/18/21   | 34      | -74%           | 2.6%     |

## # Days since Daily Case Peak: **Longer = Good**



Powered by Bing  
© GeoNames, Microsoft, TomTom

## Daily Cases % off the Peak: **Larger Decline = Good**



Powered by Bing  
© GeoNames, Microsoft, TomTom

# #7: US New Cases by States... (sorted by today's new cases)

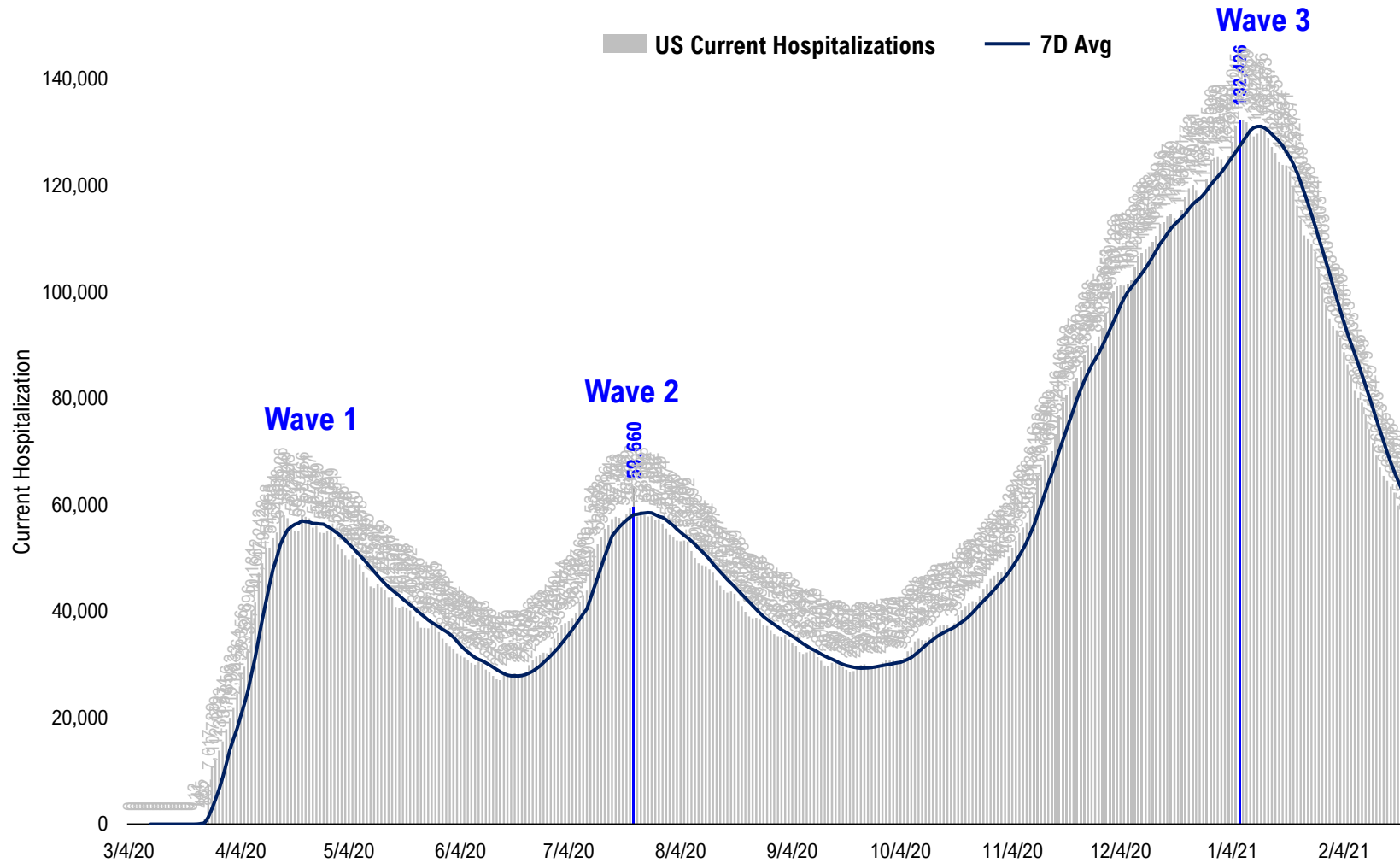
|                | Sorted  |                  |         |         |           |
|----------------|---------|------------------|---------|---------|-----------|
|                | 7D Ago  | Last 3-day Trend |         |         |           |
|                | 2/14/21 | 2/19/21          | 2/20/21 | 2/21/21 | vs 7D ago |
| United States  | 66,298  | 70,489           | 67,403  | 54,336  | -11,962   |
| <b>States:</b> |         |                  |         |         |           |
| California     | 8,842   | 6,798            | 6,668   | 6,760   |           |
| New York       | 8,316   | 8,710            | 7,692   | 6,610   |           |
| Florida        | 5,436   | 6,683            | 7,280   | 5,065   |           |
| Texas          | 5,725   | 2,150            | 4,902   | 3,617   |           |
| North Carolina | 3,170   | 3,227            | 3,446   | 2,541   |           |
| Virginia       | 2,575   | 2,034            | 1,882   | 2,303   |           |
| Louisiana      | 1,312   | 430              | 0       | 1,909   | <--higher |
| Pennsylvania   | 2,571   | 2,778            | 2,818   | 1,906   |           |
| New Jersey     | 1,781   | 2,593            | 2,631   | 1,809   |           |
| Arizona        | 1,947   | 1,918            | 2,047   | 1,804   |           |
| South Carolina | 1,456   | 2,245            | 2,183   | 1,732   |           |
| Illinois       | 1,631   | 2,219            | 1,922   | 1,585   |           |
| Massachusetts  | 1,882   | 1,818            | 1,970   | 1,520   |           |
| Georgia        | 1,709   | 2,174            | 2,390   | 1,463   |           |
| Ohio           | 1,809   | 2,306            | 2,611   | 1,461   |           |
| Tennessee      | 1,347   | 1,372            | 1,335   | 1,129   |           |
| Oklahoma       | 1,266   | 869              | 973     | 1,036   |           |
| Kentucky       | 1,708   | 1,958            | 1,331   | 979     |           |
| Indiana        | 1,218   | 1,035            | 1,415   | 881     |           |
| Minnesota      | 776     | 995              | 870     | 879     |           |
| Alabama        | 1,075   | 847              | 774     | 857     |           |
| Colorado       | 853     | 1,280            | 1,117   | 802     |           |
| Utah           | 710     | 857              | 778     | 701     |           |
| Maryland       | 847     | 1,008            | 763     | 618     |           |
| Missouri       | 489     | 562              | 566     | 410     |           |
| Wisconsin      | 503     | 774              | 676     | 403     |           |
| Mississippi    | 1,093   | 360              | 350     | 390     |           |
| New Mexico     | 282     | 311              | 425     | 314     |           |

|                          | Sorted  |                  |         |         |           |
|--------------------------|---------|------------------|---------|---------|-----------|
|                          | 7D Ago  | Last 3-day Trend |         |         |           |
|                          | 2/14/21 | 2/19/21          | 2/20/21 | 2/21/21 | vs 7D ago |
| United States            | 66,298  | 70,489           | 67,403  | 54,336  | -11,962   |
| <b>States:</b>           |         |                  |         |         |           |
| Iowa                     | 355     | 392              | 345     | 302     |           |
| Nevada                   | 512     | 420              | 371     | 301     |           |
| West Virginia            | 306     | 295              | 309     | 252     |           |
| New Hampshire            | 280     | 368              | 394     | 252     |           |
| Puerto Rico              | 269     | 102              | 175     | 203     |           |
| Delaware                 | 331     | 329              | 350     | 201     |           |
| Nebraska                 | 209     | 400              | 309     | 198     |           |
| Arkansas                 | 433     | 180              | 316     | 160     |           |
| South Dakota             | 110     | 147              | 147     | 139     | <--higher |
| Montana                  | 104     | 277              | 264     | 138     | <--higher |
| Vermont                  | 116     | 102              | 108     | 134     |           |
| Maine                    | 110     | 134              | 143     | 130     |           |
| Wyoming                  | 50      | 152              | 0       | 112     | <--higher |
| Oregon                   | 247     | 477              | 521     | 107     |           |
| District of Columbia     | 122     | 160              | 92      | 95      |           |
| Hawaii                   | 46      | 48               | 59      | 67      | <--higher |
| North Dakota             | 46      | 119              | 75      | 49      |           |
| Northern Mariana Islands | 0       | 0                | 0       | 8       |           |
| Guam                     | 3       | 10               | 1       | 4       | <--higher |
| Washington               | 0       | 764              | 767     | 0       |           |
| U.S. Virgin Islands      | 0       | 7                | 10      | 0       |           |
| Rhode Island             | 320     | 286              | 0       | 0       |           |
| Michigan                 | 0       | 1,193            | 635     | 0       |           |
| Kansas                   | 0       | 2,115            | 0       | 0       |           |
| Idaho                    | 0       | 314              | 197     | 0       |           |
| Connecticut              | 0       | 1,198            | 0       | 0       |           |
| American Samoa           | 0       | 0                | 0       | 0       |           |
| Alaska                   | 0       | 189              | 0       | 0       |           |



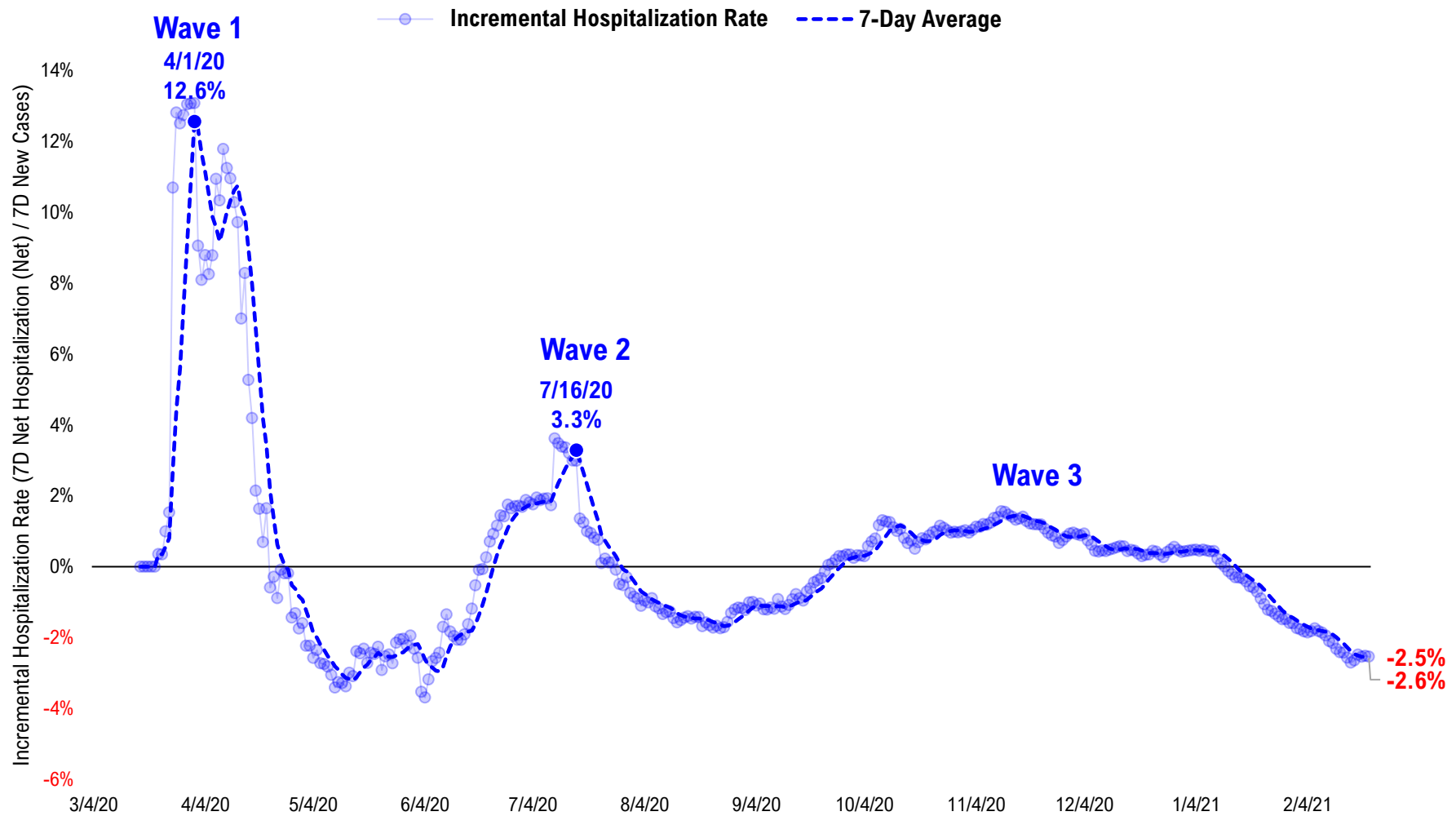
# #8: US Daily Hospitalizations...

### US Net Hospitalizations (aggregate of 50 states + Washington, D.C.)



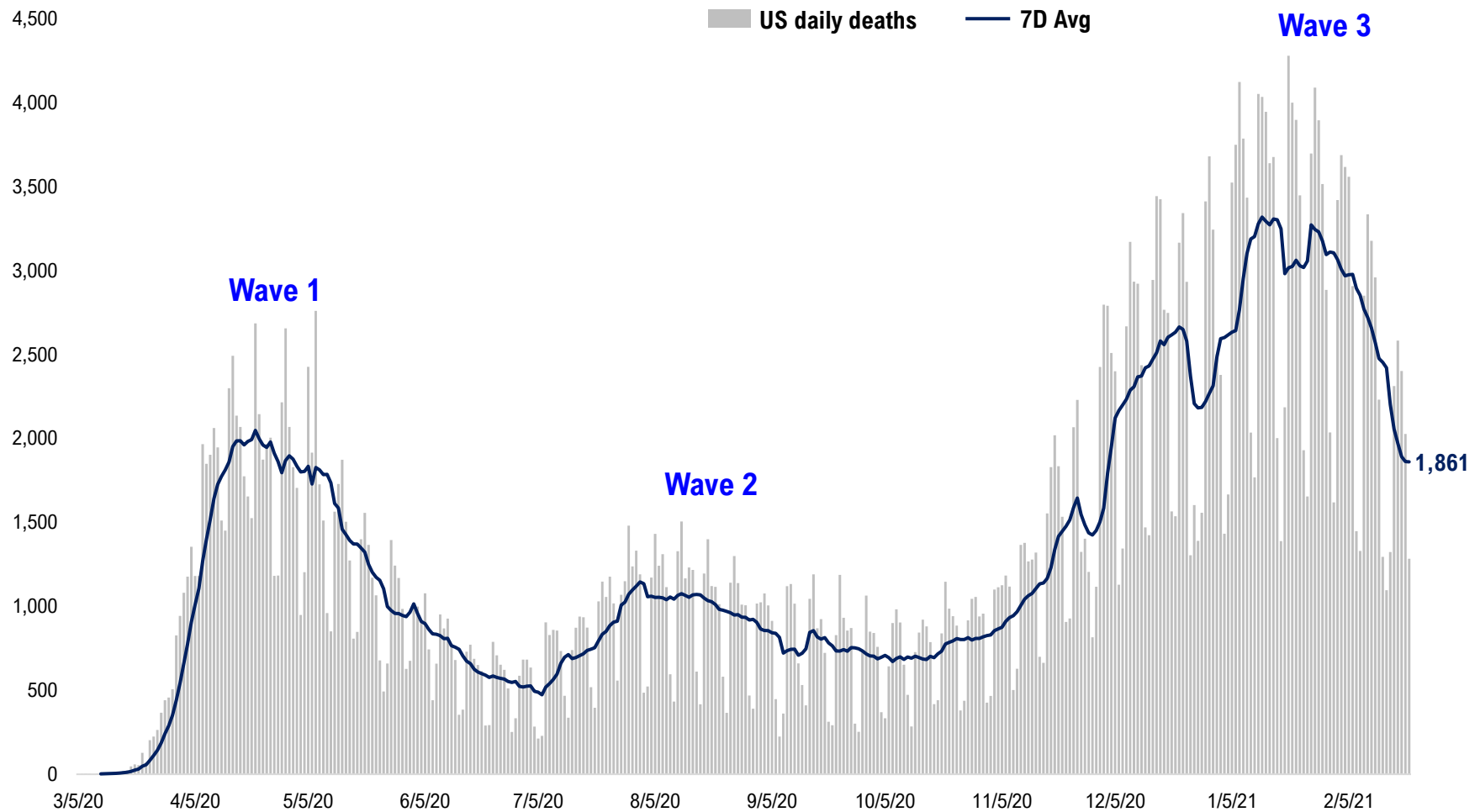
# #9: Incremental Hospitalization Rate...

Incremental Hospitalization Rate: 7D Net Hospitalizations / 7D Total New Cases  
(aggregate of 50 states + Washington, D.C.)



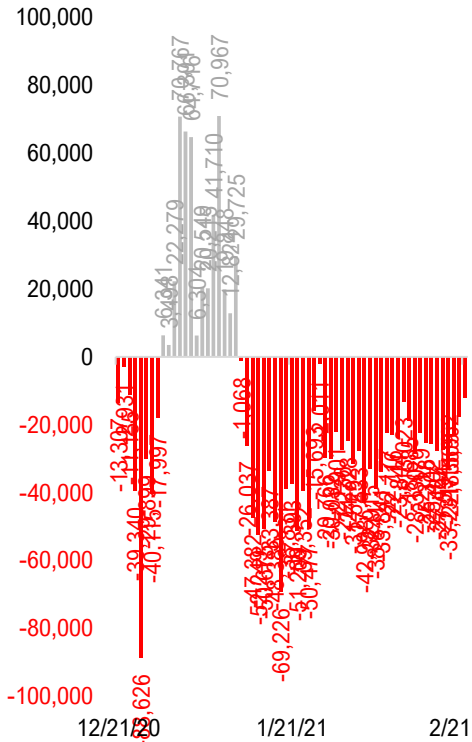
# #10: US Daily New Fatalities...

## US daily COVID-19 Fatalities

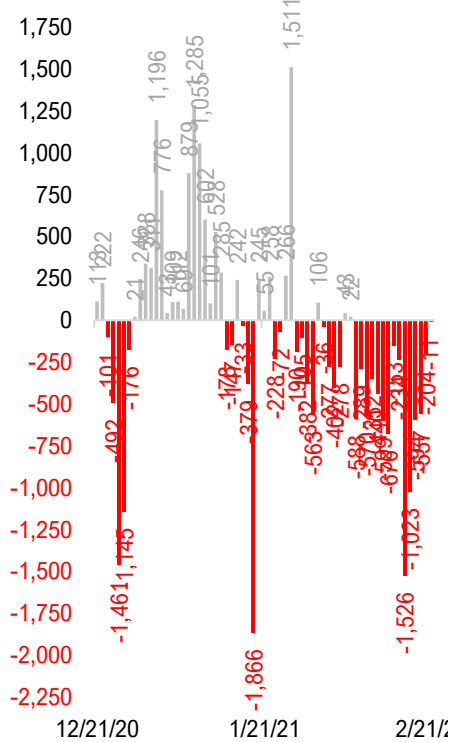


# #11: Rolling 7-Day Change in the Key Metrics... (Past 8 Weeks)

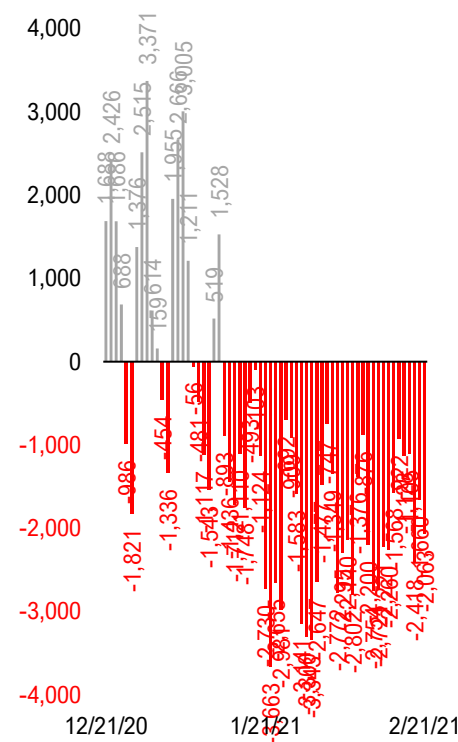
**Daily New Cases**  
(8/10-8/23 ex-CA; 9/4-9/5 ex-IL)



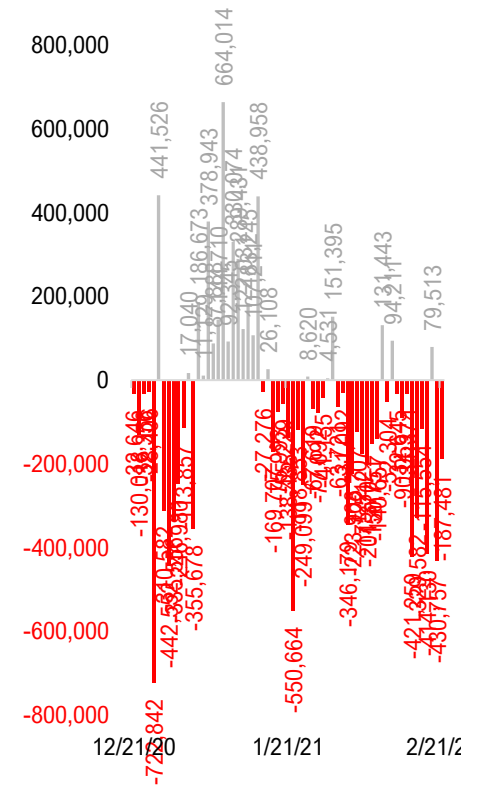
**Daily Deaths**



**Daily Net Hospitalization**  
(Red = more discharge than admission)

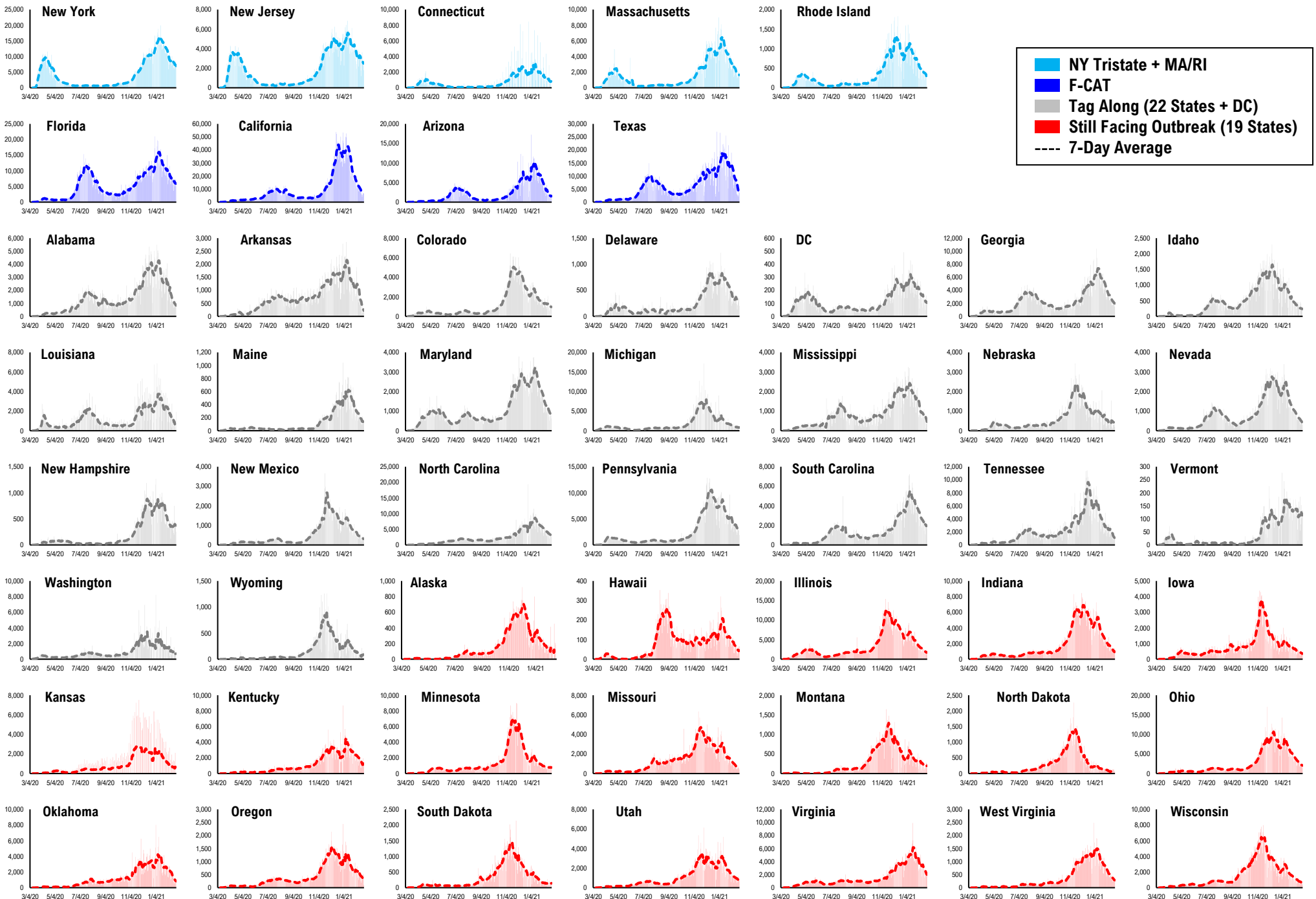


**Daily Tests**

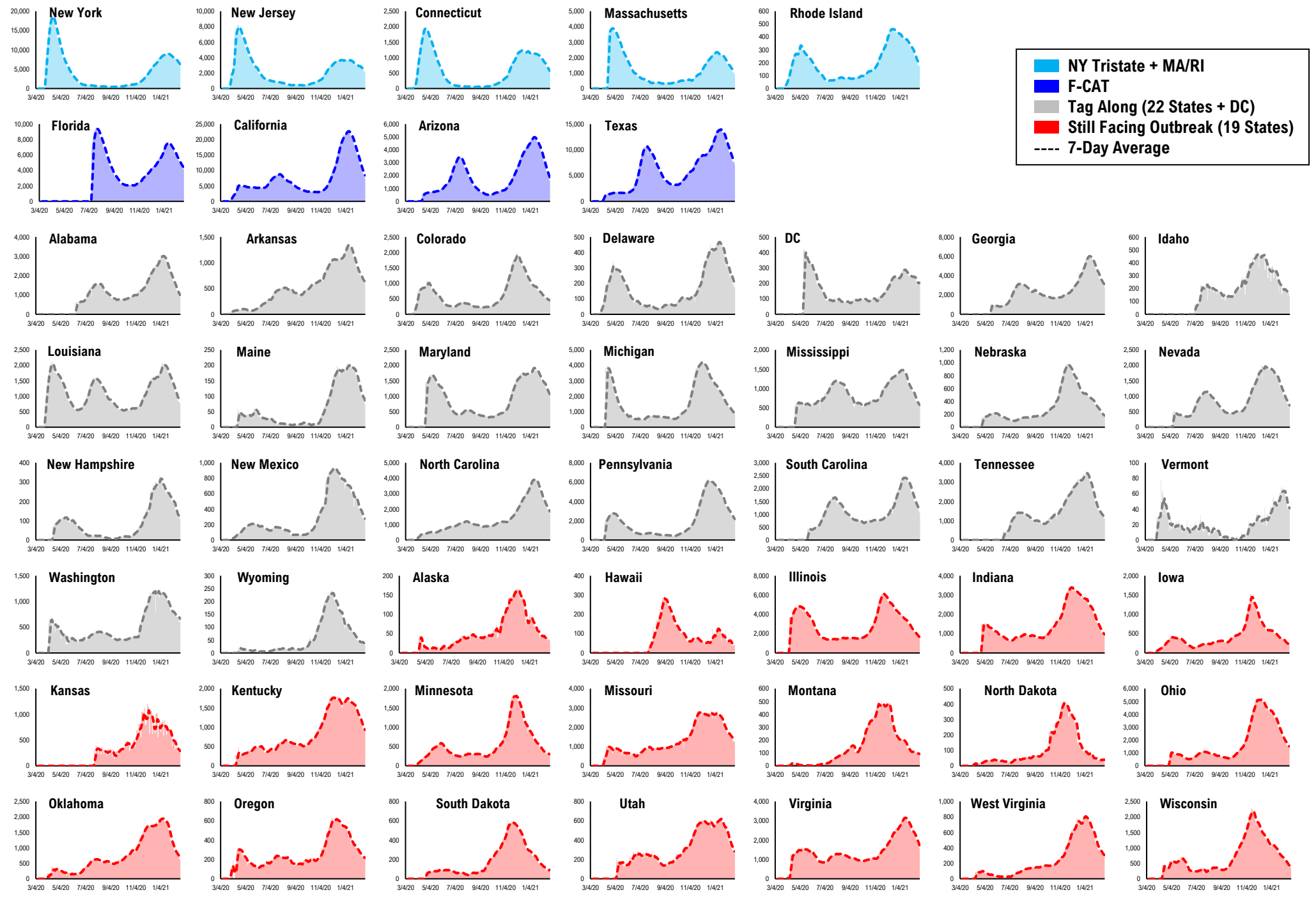


\* Ignored California between 8/10 and 8/23, due to its data glitch caused 300,000-case backlog  
Source: Fundstrat, COVID-19 Tracking Project, State Department of Health

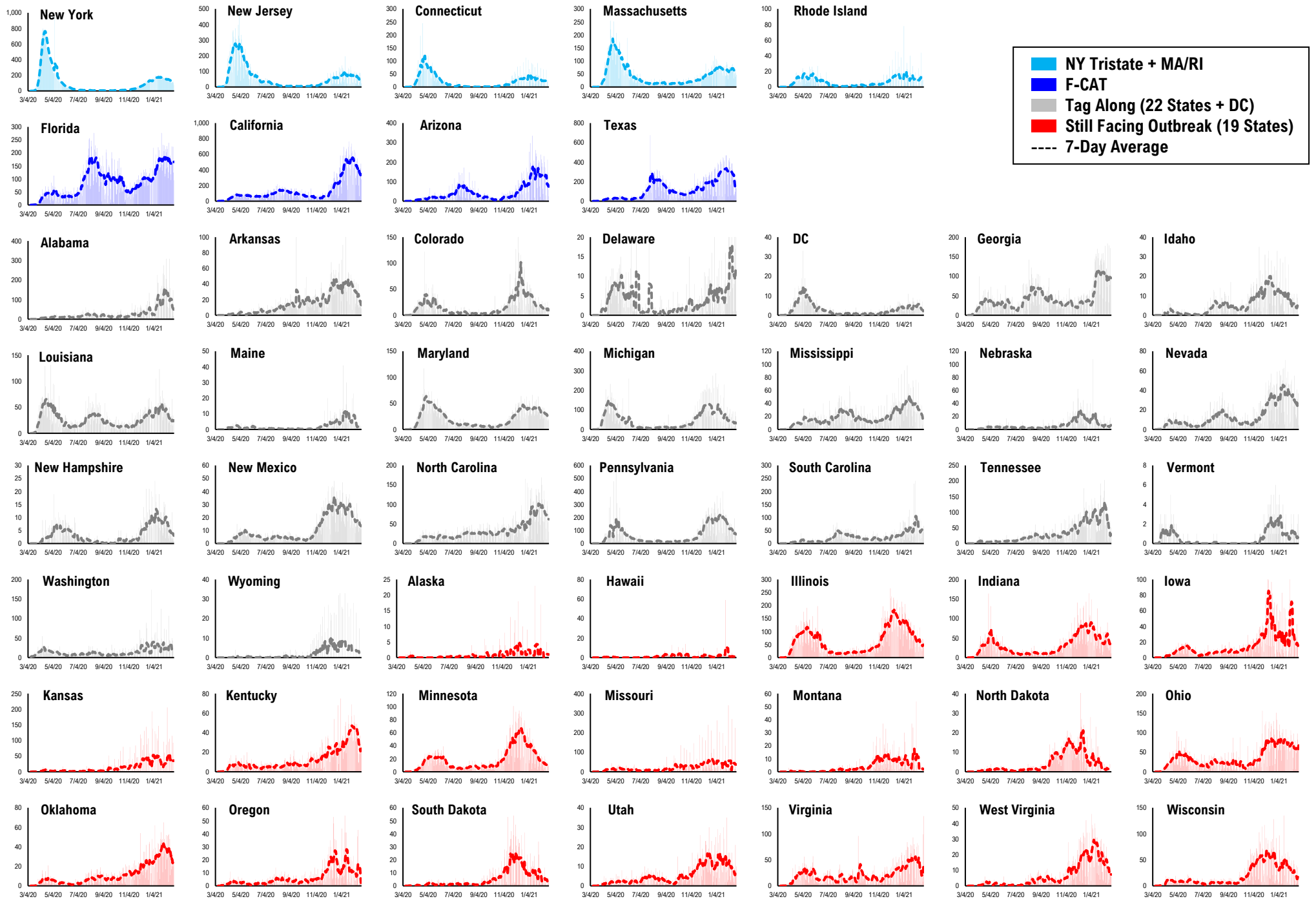
# #12: Daily New Cases by States...



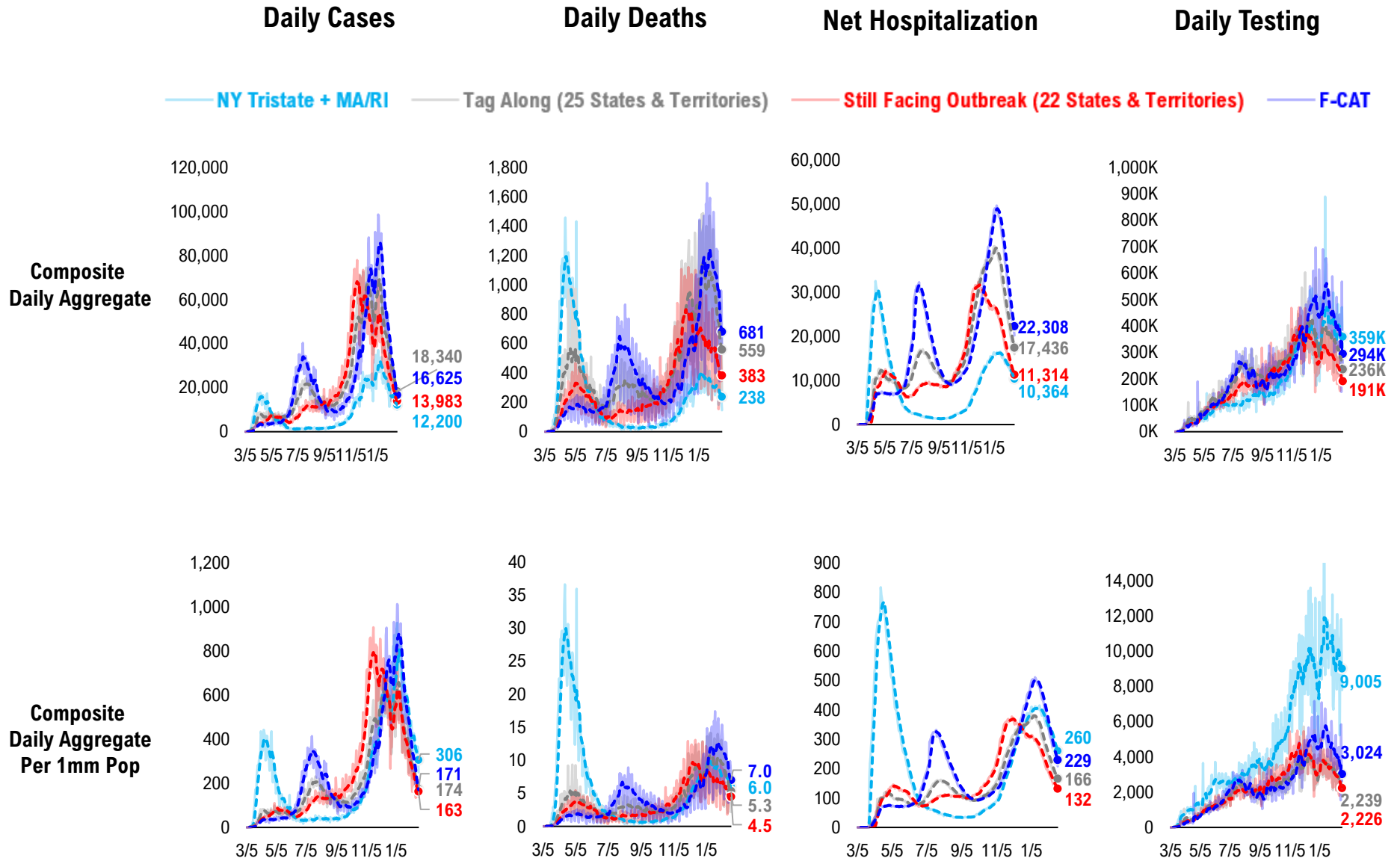
# #13: Current Hospitalizations by States...



# #14: Daily New Deaths by States...



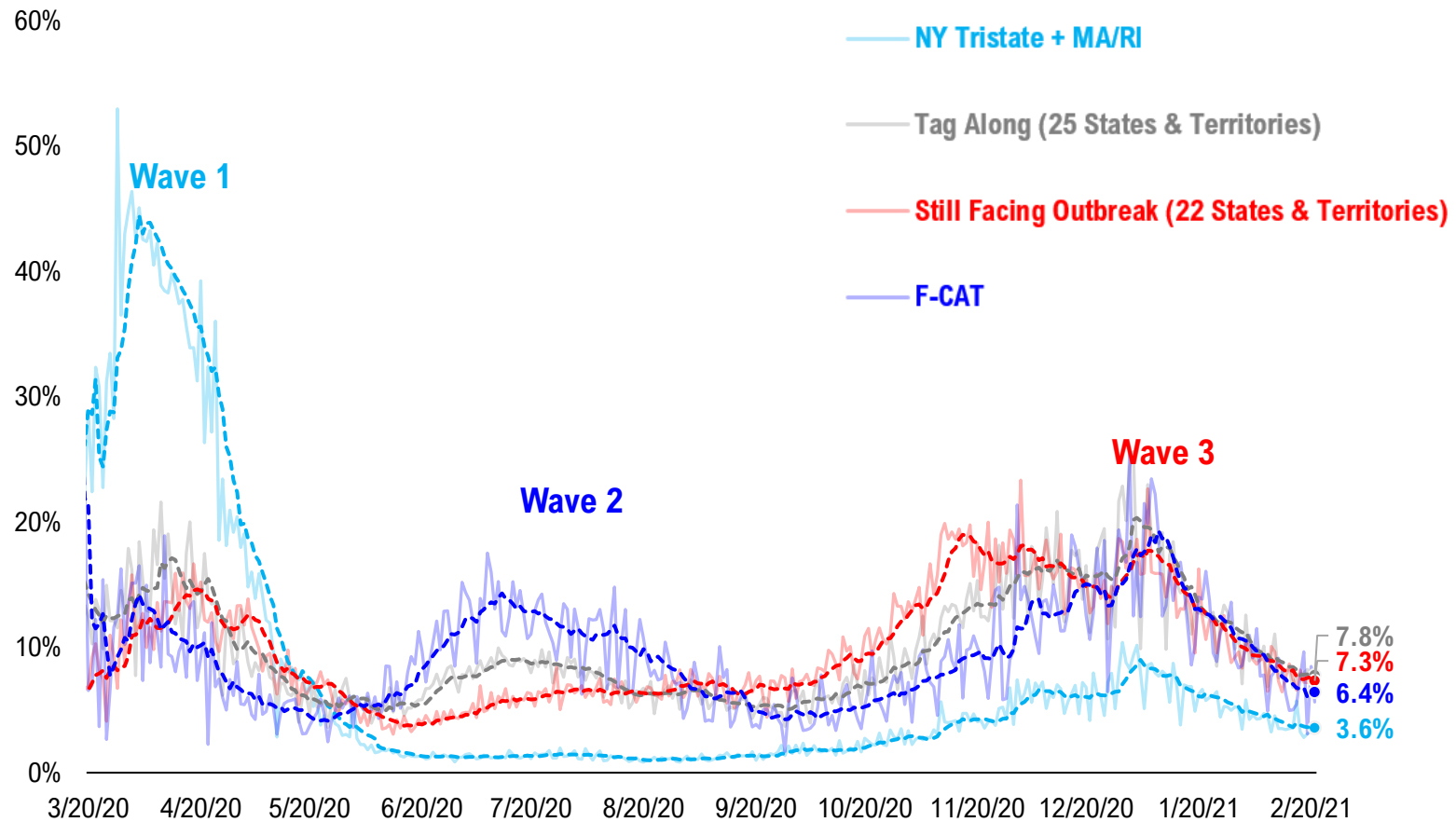
# #15: State COVID-19 situation by Tier...



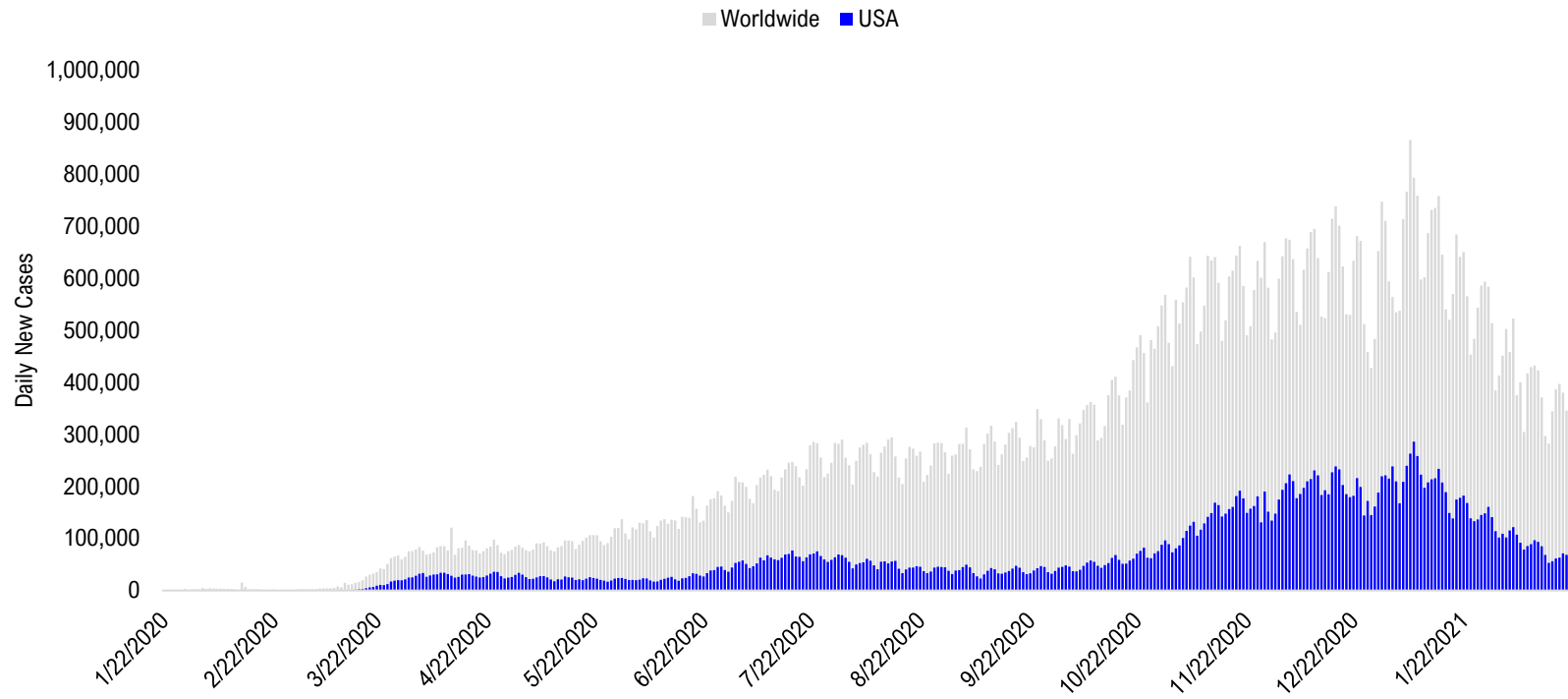


# #16: State COVID-19 Daily Positivity Rate by Tier...

## Composite Daily Positivity Rate



# #17: Global COVID-19 Situation at a Glance...



| Oct 2                                   | Oct 16                                  | Oct 30                                  | Nov 13                                  | Nov 27                                  | Dec 11                                  | Dec 25                                  | Jan 8                                   | Jan 22                                  | Feb 5                                   | Feb 20                                  |
|---|---|---|---|---|---|---|---|---|---|---|
| Pakistan + India + Bangladesh<br>84,614 | Europe<br>156,734                       | Europe<br>288,225                       | Europe<br>301,978                       | Europe<br>274,576                       | Europe<br>268,935                       | Europe<br>249,312                       | Europe<br>303,170                       | Europe<br>242,053                       | Europe<br>189,715                       | Europe<br>139,228                       |
| Europe<br>77,884                        | Latin America<br>67,981                 | US + Canada<br>89,511                   | US + Canada<br>157,595                  | US + Canada<br>172,703                  | US + Canada<br>224,650                  | US + Canada<br>191,310                  | US + Canada<br>271,268                  | US + Canada<br>184,149                  | US + Canada<br>116,689                  | Latin America<br>95,656                 |
| Latin America<br>61,009                 | Pakistan + India + Bangladesh<br>66,697 | Latin America<br>65,614                 | Latin America<br>74,232                 | Latin America<br>79,197                 | Latin America<br>92,545                 | Latin America<br>89,576                 | Latin America<br>132,508                | Latin America<br>134,579                | Latin America<br>108,267                | US + Canada<br>70,561                   |
| US + Canada<br>47,741                   | US + Canada<br>63,472                   | Pakistan + India + Bangladesh<br>51,456 | Pakistan + India + Bangladesh<br>49,697 | Pakistan + India + Bangladesh<br>48,359 | Pakistan + India + Bangladesh<br>35,248 | Pakistan + India + Bangladesh<br>26,828 | Africa<br>35,216                        | Asia ex-India+Pakistan<br>27,748        | Asia ex-India+Pakistan<br>23,452        | Asia ex-India+Pakistan<br>17,699        |
| Asia ex-India+Pakistan<br>11,658        | Asia ex-India+Pakistan<br>13,790        | Asia ex-India+Pakistan<br>12,846        | Africa<br>14,813                        | Asia ex-India+Pakistan<br>16,287        | Africa<br>19,182                        | Africa<br>26,119                        | Asia ex-India+Pakistan<br>24,781        | Africa<br>27,183                        | Africa<br>15,791                        | Pakistan + India + Bangladesh<br>15,503 |
| Africa<br>8,147                         | Africa<br>10,431                        | Africa<br>12,181                        | Asia ex-India+Pakistan<br>14,319        | Africa<br>14,870                        | Asia ex-India+Pakistan<br>17,917        | Asia ex-India+Pakistan<br>18,682        | Pakistan + India + Bangladesh<br>16,059 | Pakistan + India + Bangladesh<br>17,313 | Pakistan + India + Bangladesh<br>14,158 | Africa<br>11,436                        |

# Disclosures

This research is for the clients of FS Insight only. For important disclosures and rating histories regarding sectors or companies that are the subject of this report, please contact your sales representative or FS Insight at 150 East 52nd Street, New York, NY, 10022 USA.

## **Analyst Certification (Reg AC)**

Thomas J. Lee, the research analyst denoted by an “AC” on the cover of this report, hereby certifies that all of the views expressed in this report accurately reflect his personal views, which have not been influenced by considerations of the firm’s business or client relationships.

Neither I, nor a member of my household is an officer, director, or advisory board member of the issuer(s) or has another significant affiliation with the issuer(s) that is/are the subject of this research report. There is a possibility that we will from time to time have long or short positions in, and buy or sell, the securities or derivatives, if any, referred to in this research

## **Conflicts of Interest**

This research contains the views, opinions and recommendations of FS Insight . As of the time of writing and publication of this presentation, FS Insight does not know of, or have reason to know of any material conflicts of interest at the time of the publication of this presentation. The Company has no contractual relationship, nor have we received any compensation from any of the companies listed in this research report.

## **Analyst Industry/Sector Views**

Positive (+): The analyst expects the performance of his industry/sector coverage universe over the next 6-18 months to be attractive vs. the relevant broad market benchmark, being the S&P 500 for North America.

Neutral (N): The analyst expects the performance of his or her industry/sector coverage universe over the next 6-18 months to be in line with the relevant broad market benchmark, being the S&P 500 for North America.

Negative (-): The analyst expects his or her industry coverage universe over the next 6-18 months to underperform vs. the relevant broad market benchmark, being the S&P 500 for North America.

## **General Disclosures**

FS Insight is an independent research company and is not a registered investment advisor and is not acting as a broker dealer under any federal or state securities laws. FS Insight is a member of IRC Securities’ Research Prime Services Platform. IRC Securities is a FINRA registered broker-dealer that is focused on supporting the independent research industry. Certain personnel of FS Insight (i.e. Research Analysts) are registered representatives of IRC Securities, a FINRA member firm registered as a broker-dealer with the Securities and Exchange Commission and certain state securities regulators. As registered representatives and independent contractors of IRC Securities, such personnel may receive commissions paid to or shared with IRC Securities for transactions placed by FS Insight clients directly with IRC Securities or with securities firms that may share commissions with IRC Securities in accordance with applicable SEC and FINRA requirements. IRC Securities does not distribute the research of FS Insight , which is available to select institutional clients that have engaged FS Insight .

As registered representatives of IRC Securities our analysts must follow IRC Securities’ Written Supervisory Procedures. Notable compliance policies include (1) prohibition of insider trading or the facilitation thereof, (2) maintaining client confidentiality, (3) archival of electronic communications, and (4) appropriate use of electronic communications, amongst other compliance related policies.

FS Insight does not have the same conflicts that traditional sell-side research organizations have because FS Insight (1) does not conduct any investment banking activities, (2) does not manage any investment funds, and (3) our clients are only institutional investors.

This research is for the clients of FS Insight only. Additional information is available upon request. Information has been obtained from sources believed to be reliable but FS Insight does not warrant its completeness or accuracy except with respect to any disclosures relative to FS Insight and the analyst’s involvement (if any) with any of the subject companies of the research. All pricing is as of the market close for the securities discussed, unless otherwise stated. Opinions and estimates constitute our judgment as of the date of this material and are subject to change without notice. Past performance is not indicative of future results. This material is not intended as an offer or solicitation for the purchase or sale of any financial instrument. The opinions and recommendations herein do not take into account individual client circumstances, risk tolerance, objectives, or needs and are not intended as recommendations of particular securities, financial instruments or strategies. The recipient of this report must make its own independent decision regarding any securities or financial instruments mentioned herein. Except in circumstances where FS Insight expressly agrees otherwise in writing, FS Insight is not acting as a municipal advisor and the opinions or views contained herein are not intended to be, and do not constitute, advice, including within the meaning of Section 15B of the Securities Exchange Act of 1934. All research reports are disseminated and available to all clients simultaneously through electronic publication to our internal client website, FS Insight .com. Not all research content is redistributed to our clients or made available to third-party aggregators or the media. Please contact your sales representative if you would like to receive any of our research publications.

**Copyright 2021 FS Insight LLC. All rights reserved. No part of this material may be reprinted, sold or redistributed without the prior written consent of FS Insight LLC.**