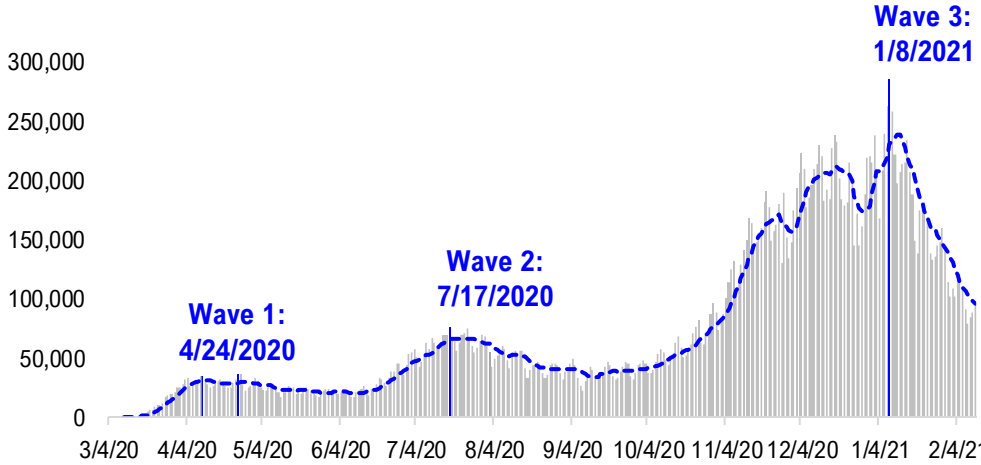


# FSInsight Daily COVID-19 Chartbook

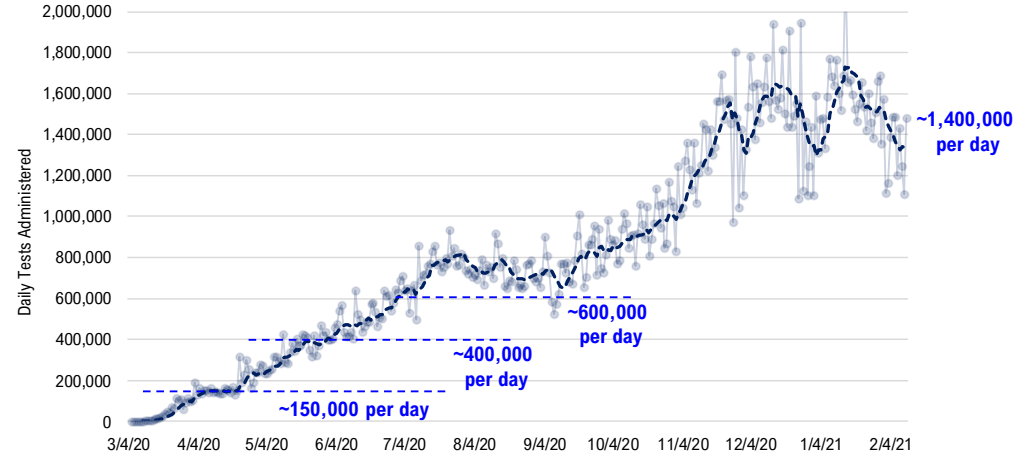


# #1: USA COVID-19 Situation at a Glance...

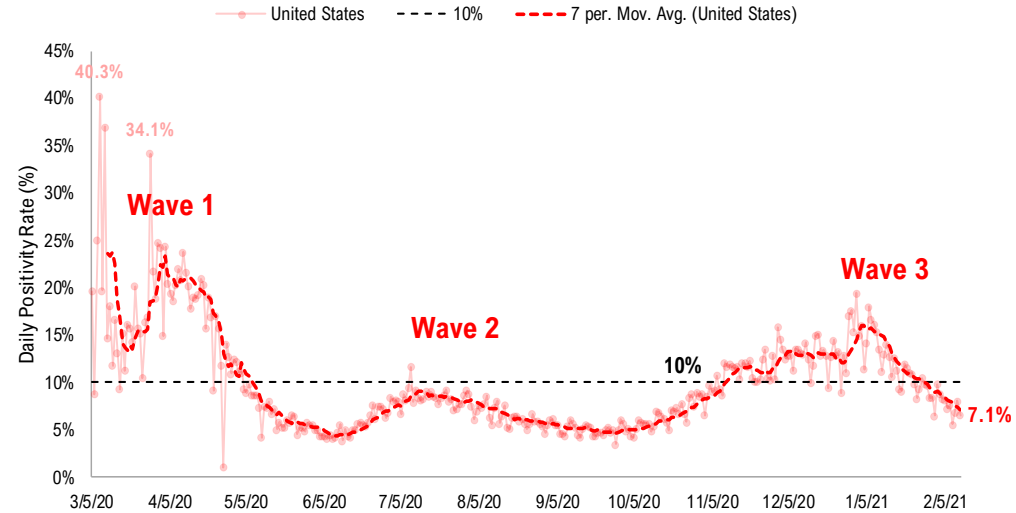
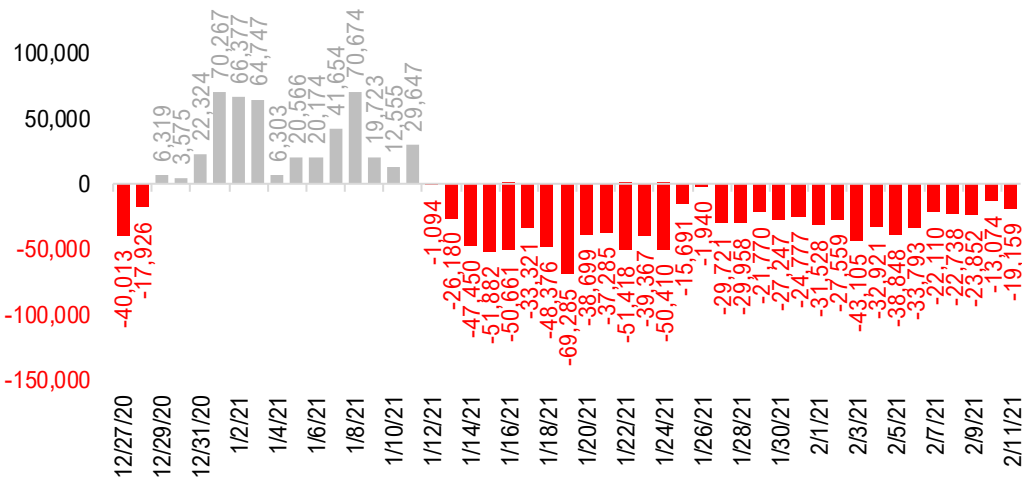
**US daily new cases**



**USA total COVID-19 tests administered**

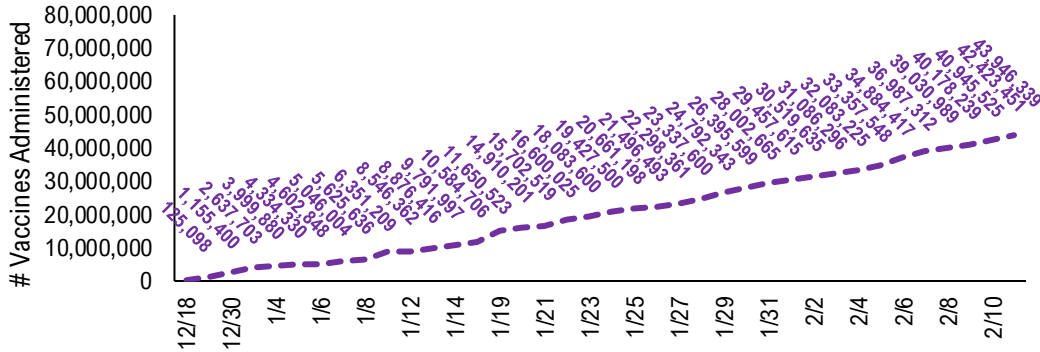


**US daily new cases rolling 7D delta**

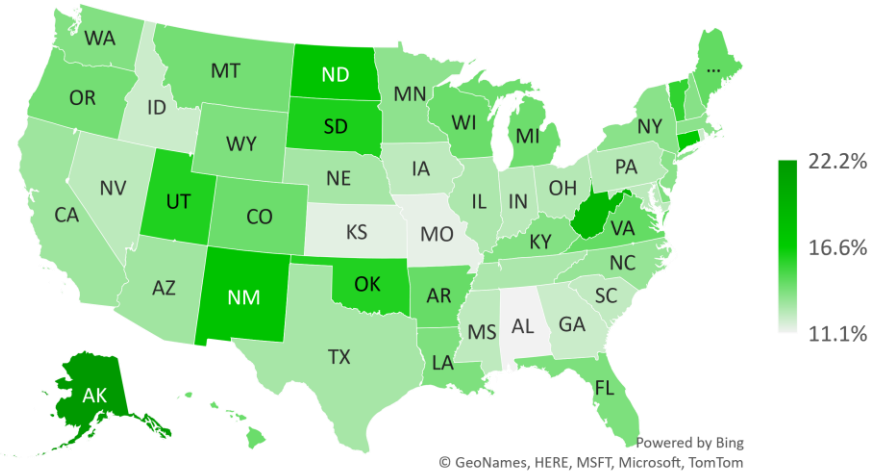


# #2: USA COVID-19 Vaccination Progress at a Glance...

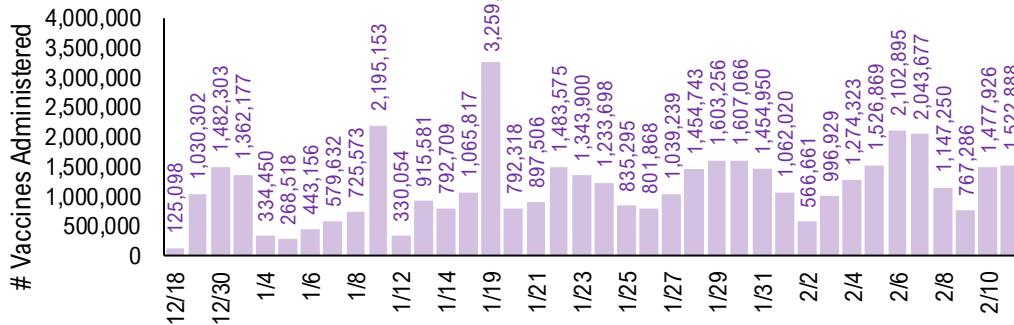
### Cumulative Vaccines Administered



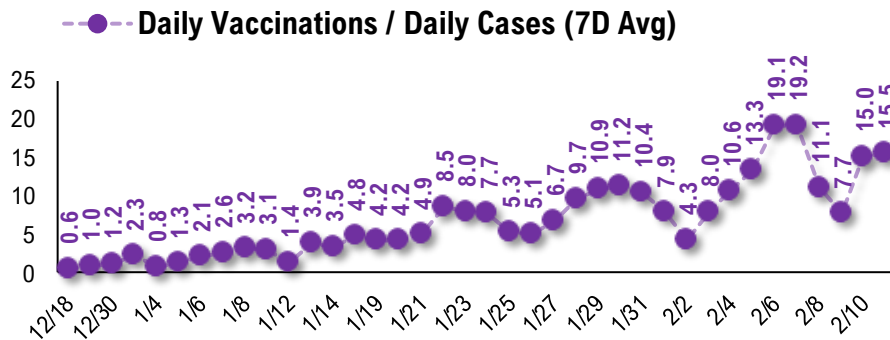
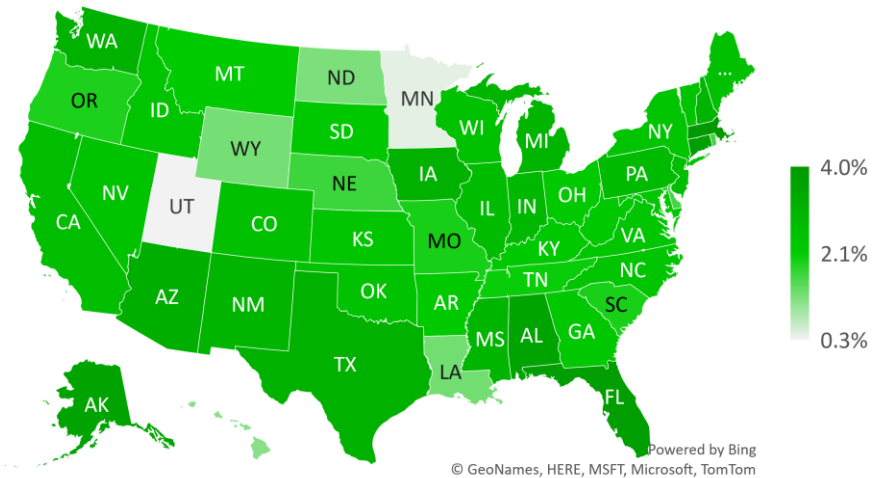
### Cumulative Vaccines Administered as % State Population



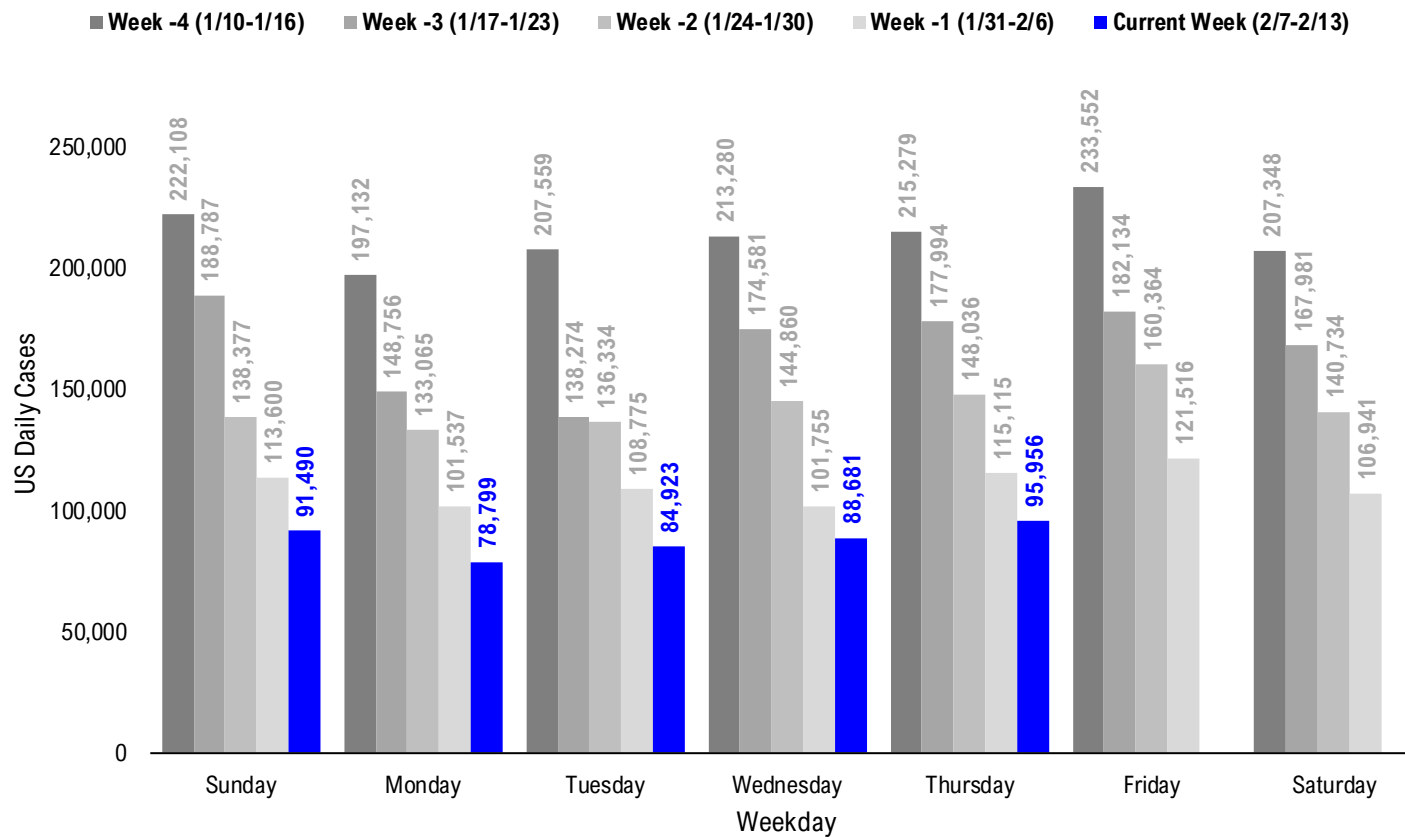
### Daily Vaccines Administered



### Implied Weekly Vaccines Administered as % State Population



# #3: USA COVID-19 Daily Cases Weekday Seasonality (Past 4 Weeks) ...



# #4: USA State COVID-19 Situation at a Glance...

	Sorted Daily Cases		Daily Cases (3D avg) per 1mm residents				Hospitalization			
	% US Pop	% US GDP	7D		# Days	% Decline in Daily Cases	7D Net Hospitalization	7D Net Hospitalization / 7D New Cases		
			2/11	Delta						
United States	100%	100%	95,956	-19,159	274	-57	33	-67%	-14,443	-2.2%

	Sorted Daily Cases		Daily Cases (3D avg) per 1mm residents				Hospitalization			
	% US Pop	% US GDP	7D		# Days	% Decline in Daily Cases	7D Net Hospitalization	7D Net Hospitalization / 7D New Cases		
			2/11	Delta						
United States	100%	100%	95,956	-19,159	274	-57	33	-67%	-14,443	-2.2%

### States:

1	New York	5.9%	8.1%	10,099	+2,685	430	+60	33	-53%	-625	(1.0%)
2	California	11.9%	14.6%	8,575	-4,601	213	-89	32	-83%	-3,093	(4.0%)
3	Florida	6.5%	5.0%	8,525	+814	358	-33	34	-60%	-701	(1.3%)
4	Texas	8.7%	8.8%	8,435	-3,564	330	-177	35	-56%	-1,590	(2.6%)
5	North Carolina	3.2%	2.7%	4,568	-927	356	-45	33	-65%	-445	(1.6%)
6	Pennsylvania	3.9%	3.8%	3,978	+608	298	+14	68	-68%	-451	(1.7%)
7	Virginia	2.6%	2.6%	3,699	+640	398	+56	24	-57%	-308	(1.3%)
8	Georgia	3.2%	2.9%	3,327	-522	262	-71	32	-68%	-728	(3.5%)
9	New Jersey	2.7%	3.0%	2,949	+527	364	+98	33	-47%	-315	(1.4%)
10	Illinois	3.8%	4.2%	2,838	-490	204	-32	90	-81%	-387	(2.1%)
11	Ohio	3.5%	3.3%	2,806	-1,314	265	-71	63	-73%	-390	(1.9%)
12	Louisiana	1.4%	1.3%	2,739	-19	315	-214	35	-72%	-243	(2.9%)
13	Massachusetts	2.1%	2.8%	2,450	-354	295	-68	33	-74%	-241	(1.4%)
14	Kentucky	1.3%	1.0%	1,871	-622	456	-104	34	-60%	-198	(1.5%)
15	Arizona	2.2%	1.7%	1,861	-2,556	376	-66	39	-77%	-796	(4.1%)
16	South Carolina	1.6%	1.1%	1,820	-726	363	-93	32	-71%	-286	(1.8%)
17	Colorado	1.7%	1.8%	1,722	+138	197	-22	82	-81%	-88	(1.0%)
18	Indiana	2.0%	1.8%	1,701	-658	211	-51	68	-82%	-315	(2.8%)
19	Oklahoma	1.2%	1.0%	1,677	-1,105	371	-151	32	-72%	-201	(1.6%)
20	Tennessee	2.1%	1.8%	1,624	-1,530	303	-48	55	-80%	-177	(1.1%)
21	Alabama	1.5%	1.1%	1,503	-1,264	287	-186	35	-72%	-385	(3.9%)
22	Michigan	3.0%	2.6%	1,284	-74	92	-39	85	-89%	-315	(4.5%)
23	Washington	2.3%	2.7%	1,281	-129	109	-53	78	-80%	-85	(1.2%)
24	Utah	1.0%	0.9%	1,242	-31	360	-63	34	-72%	-86	(1.2%)
25	Wisconsin	1.8%	1.0%	1,239	-279	157	-60	90	-88%	-150	(2.4%)
26	Maryland	1.8%	2.0%	1,199	-355	183	-5	32	-69%	-154	(1.7%)
27	Missouri	1.8%	1.5%	1,034	-365	139	-52	89	-83%	-187	(3.1%)
28	Connecticut	1.1%	1.3%	1,003	+66	258	-115	29	-81%	-106	(1.2%)

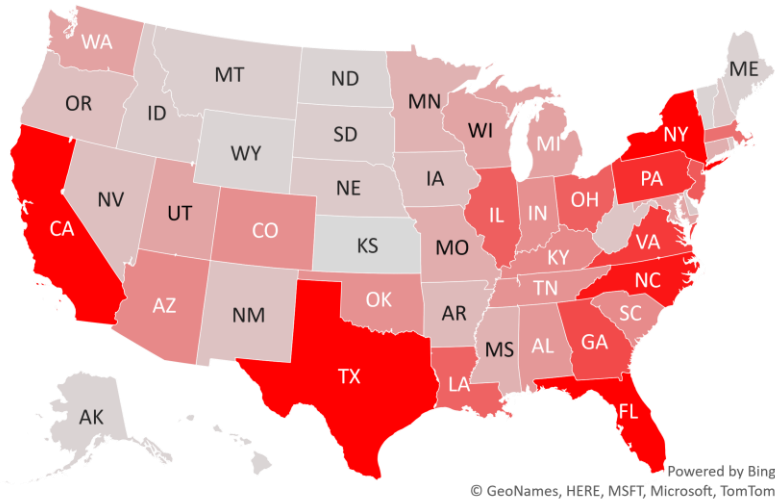
### States:

29	Mississippi	0.9%	0.6%	911	-299	263	-53	33	-73%	-207	(3.4%)
30	Minnesota	1.7%	1.8%	898	-512	125	-31	73	-91%	-49	(0.9%)
31	Arkansas	0.9%	0.6%	724	-1,170	240	-248	32	-70%	-103	(1.8%)
32	Oregon	1.3%	1.2%	607	-108	131	-22	67	-68%	-58	(1.5%)
33	Iowa	1.0%	0.9%	593	-107	182	-37	90	-86%	-87	(2.5%)
34	Nevada	0.9%	0.8%	592	-297	194	-71	33	-80%	-242	(5.7%)
35	New Mexico	0.6%	0.5%	533	-26	231	-33	83	-85%	-74	(2.4%)
36	Rhode Island	0.3%	0.3%	488	-99	402	-18	68	-74%	-52	(1.7%)
37	West Virginia	0.5%	0.4%	469	-105	244	-57	39	-77%	-32	(0.9%)
38	Delaware	0.3%	0.4%	414	+171	323	+73	33	-66%	-62	(2.6%)
39	Nebraska	0.6%	0.6%	374	-133	203	-72	84	-86%	-48	(2.0%)
40	New Hampshire	0.4%	0.4%	365	-31	273	+13	38	-66%	-71	(2.8%)
41	Idaho	0.5%	0.4%	323	-79	227	-34	63	-80%	-27	(1.2%)
42	South Dakota	0.3%	0.3%	279	+105	217	+29	89	-90%	-22	(2.1%)
43	Montana	0.3%	0.2%	247	-54	289	-35	88	-78%	-4	(0.2%)
44	District of Columbia	0.2%	0.7%	185	+19	188	+19	32	-62%	-23	(2.0%)
45	Maine	0.4%	0.3%	175	-126	158	-87	27	-74%	-45	(3.0%)
46	Alaska	0.2%	0.3%	143	-15	200	-3	68	-82%	-10	(1.0%)
47	North Dakota	0.2%	0.3%	139	+41	121	-32	89	-95%	2	0.5%
48	Vermont	0.2%	0.2%	127	-47	108	-116	33	-68%	-15	(2.0%)
49	Wyoming	0.2%	0.2%	105	-75	112	-124	84	-93%	-7	(1.4%)
50	Puerto Rico	1.0%	0.5%	102	-209	38	-27	54	-89%	-9	(0.7%)
51	Hawaii	0.4%	0.5%	91	-15	41	-16	166	-80%	-8	(1.6%)
52	U.S. Virgin Islands	0.0%	0.0%	20	+20	122	+93	174	-71%	0	0.0%
53	Guam	0.0%	0.0%	3	-1	44	+16	93	-96%	5	7.8%
54	Northern Mariana	0.0%	0.0%	0	+0	0	-6	107	-100%	0	
55	Kansas	0.9%	0.8%	0	+0	221	-36	78	-85%	-149	(2.5%)
56	American Samoa	0.0%	0.0%	0	+0	0	+0	0	0%	0	

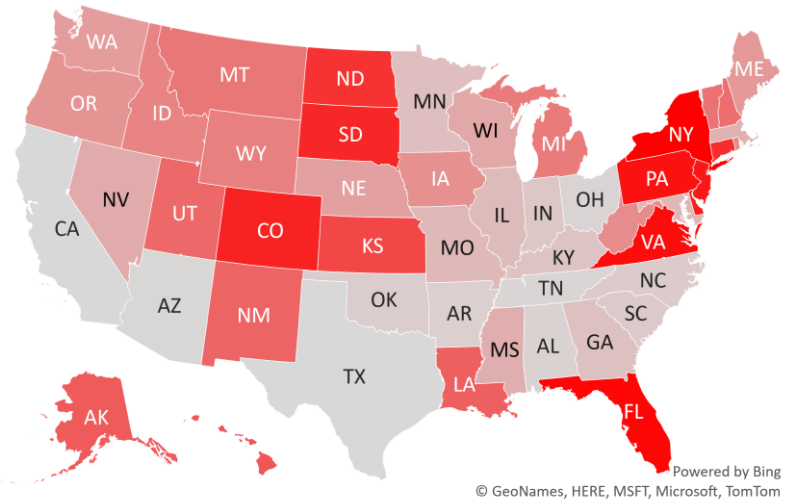


# #5: USA COVID-19 Heat Map...

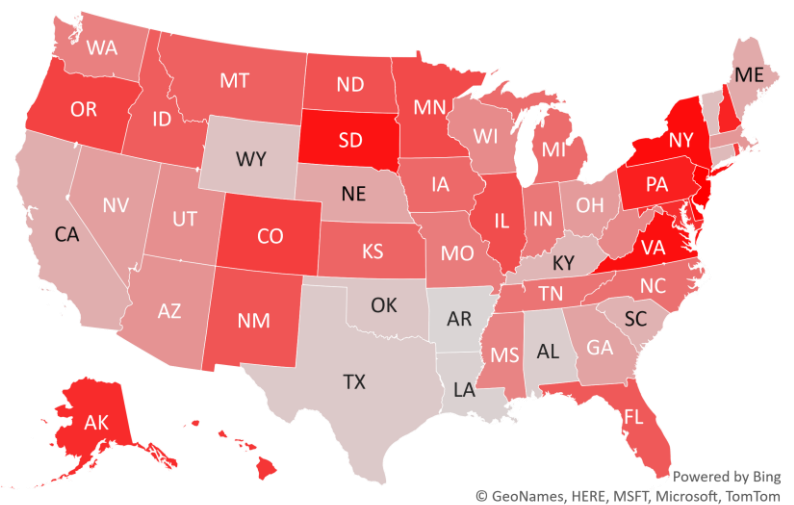
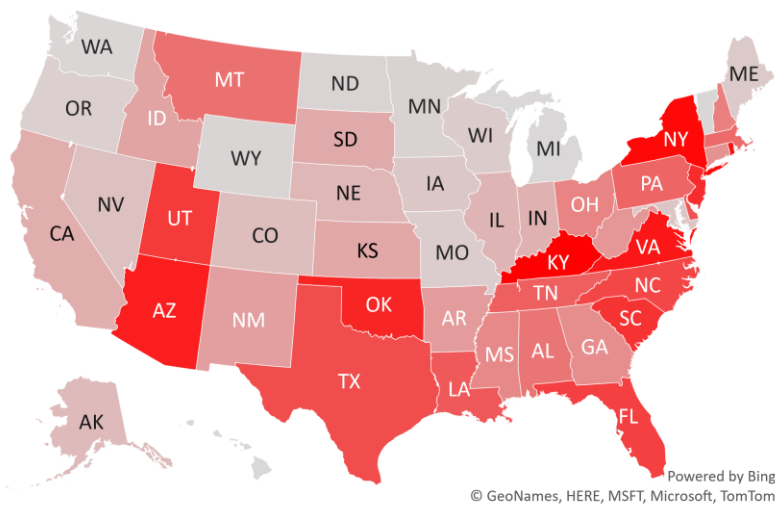
### Daily Case Increases



### 7D Delta in Daily New Cases



### Daily Case Increases per 1mm Resident (3D Avg)



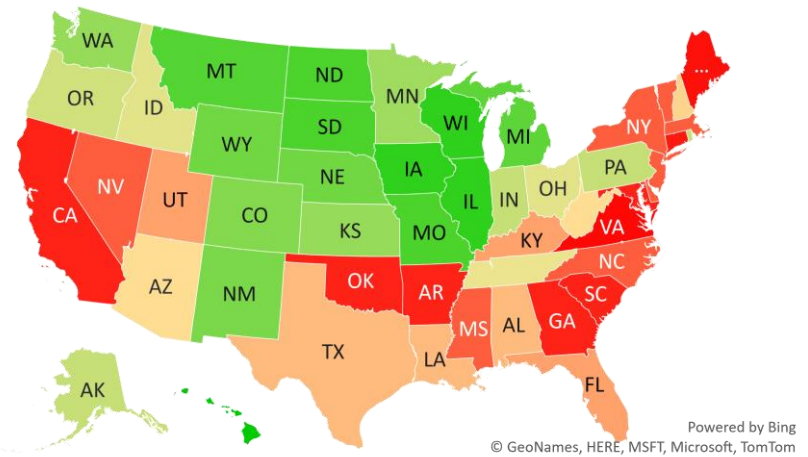
# #6: # of Days since Daily Case Peaked by States...

## # Days since Daily Cases (3D Avg) Peak (as of 2/11)

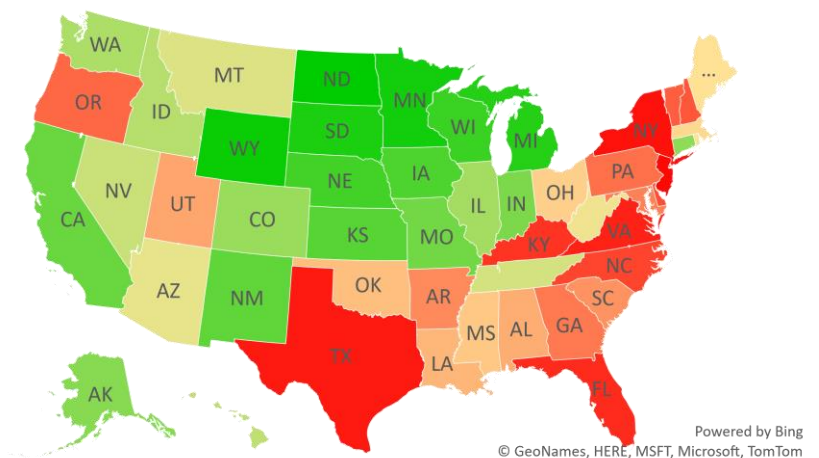
	Sorted			
	Peak Date	2/11/21	% off the Peak	% US Pop
United States	1/9/21	33	-67%	100%
<b>States:</b>				
U.S. Virgin Islands	8/21/20	174	-71%	0.0%
Hawaii	8/29/20	166	-80%	0.4%
Northern Mariana Island	10/27/20	107	-100%	0.0%
Guam	11/10/20	93	-96%	0.0%
Wisconsin	11/13/20	90	-88%	1.8%
Illinois	11/13/20	90	-81%	3.8%
Iowa	11/13/20	90	-86%	1.0%
South Dakota	11/14/20	89	-90%	0.3%
North Dakota	11/14/20	89	-95%	0.2%
Missouri	11/14/20	89	-83%	1.8%
Montana	11/15/20	88	-78%	0.3%
Michigan	11/18/20	85	-89%	3.0%
Wyoming	11/19/20	84	-93%	0.2%
Nebraska	11/19/20	84	-86%	0.6%
New Mexico	11/20/20	83	-85%	0.6%
Colorado	11/21/20	82	-81%	1.7%
Washington	11/25/20	78	-80%	2.3%
Kansas	11/25/20	78	-85%	0.9%
Minnesota	11/30/20	73	-91%	1.7%
Rhode Island	12/5/20	68	-74%	0.3%
Pennsylvania	12/5/20	68	-68%	3.9%
Indiana	12/5/20	68	-82%	2.0%
Alaska	12/5/20	68	-82%	0.2%
Oregon	12/6/20	67	-68%	1.3%
Ohio	12/10/20	63	-73%	3.5%
Idaho	12/10/20	63	-80%	0.5%
Tennessee	12/18/20	55	-80%	2.1%
Puerto Rico	12/19/20	54	-89%	1.0%

	Sorted			
	Peak Date	2/11/21	% off the Peak	% US Pop
United States	1/9/21	33	-67%	100%
<b>States:</b>				
West Virginia	1/3/21	39	-77%	0.5%
Arizona	1/3/21	39	-77%	2.2%
New Hampshire	1/4/21	38	-66%	0.4%
Texas	1/7/21	35	-56%	8.7%
Louisiana	1/7/21	35	-72%	1.4%
Alabama	1/7/21	35	-72%	1.5%
Utah	1/8/21	34	-72%	1.0%
Kentucky	1/8/21	34	-60%	1.3%
Florida	1/8/21	34	-60%	6.5%
Vermont	1/9/21	33	-68%	0.2%
New York	1/9/21	33	-53%	5.9%
Nevada	1/9/21	33	-80%	0.9%
New Jersey	1/9/21	33	-47%	2.7%
North Carolina	1/9/21	33	-65%	3.2%
Mississippi	1/9/21	33	-73%	0.9%
Massachusetts	1/9/21	33	-74%	2.1%
Delaware	1/9/21	33	-66%	0.3%
South Carolina	1/10/21	32	-71%	1.6%
Oklahoma	1/10/21	32	-72%	1.2%
Maryland	1/10/21	32	-69%	1.8%
Georgia	1/10/21	32	-68%	3.2%
District of Columbia	1/10/21	32	-62%	0.2%
California	1/10/21	32	-83%	11.9%
Arkansas	1/10/21	32	-70%	0.9%
Connecticut	1/13/21	29	-81%	1.1%
Maine	1/15/21	27	-74%	0.4%
Virginia	1/18/21	24	-57%	2.6%

## # Days since Daily Case Peak: Longer = Good



## Daily Cases % off the Peak: Larger Decline = Good



# #7: US New Cases by States... (sorted by today's new cases)

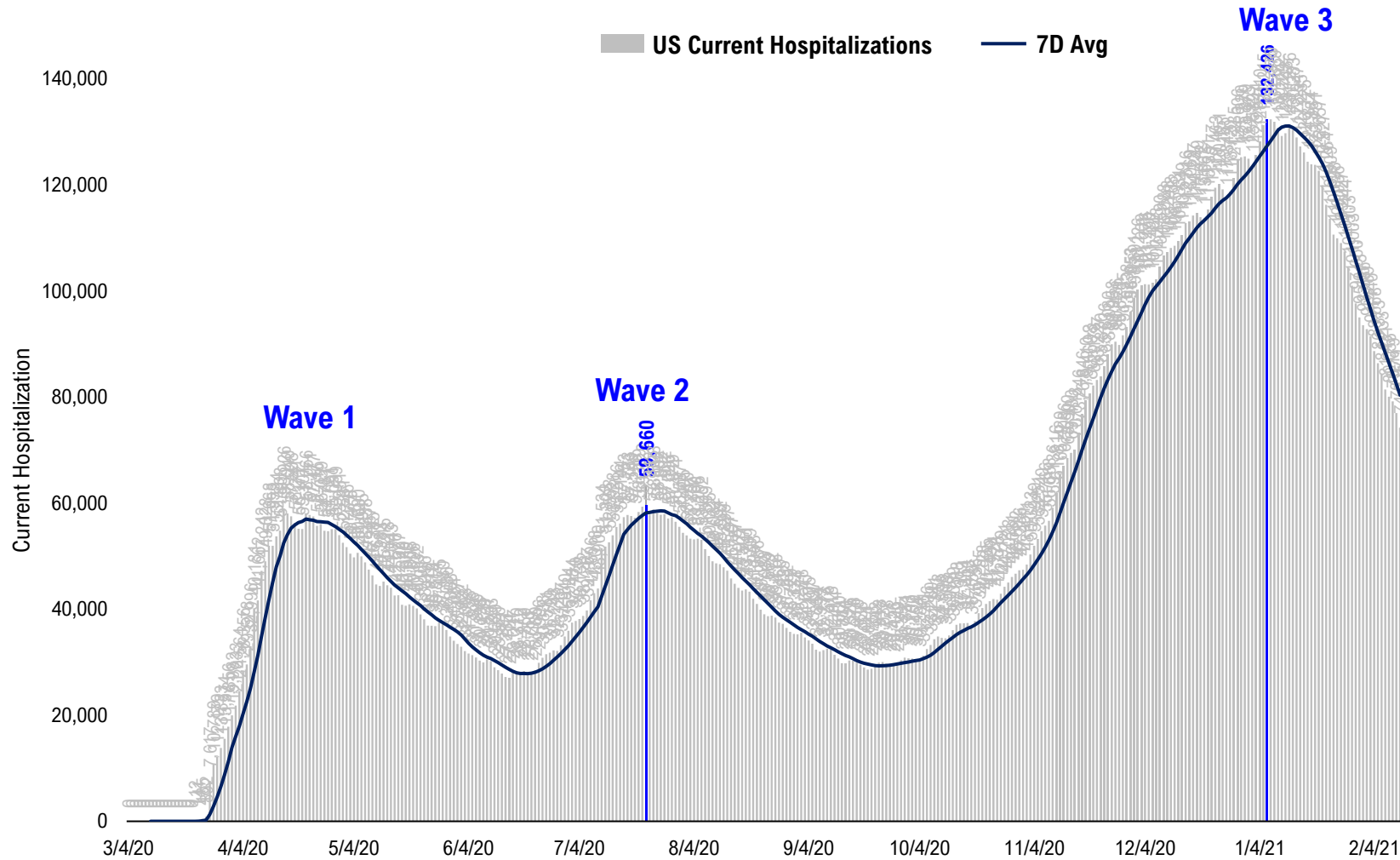
	Sorted				
	7D Ago	Last 3-day Trend			
	2/4/21	2/9/21	2/10/21	2/11/21	vs 7D ago
United States	115,115	84,923	88,681	95,956	-19,159
<b>States:</b>					
New York	7,414	7,866	7,101	10,099	<--higher
California	13,176	8,251	8,390	8,575	
Florida	7,711	7,023	7,537	8,525	
Texas	11,999	10,378	9,936	8,435	
North Carolina	5,495	2,786	3,833	4,568	
Pennsylvania	3,370	4,088	3,378	3,978	
Virginia	3,059	3,291	3,203	3,699	<--higher
Georgia	3,849	2,583	2,445	3,327	
New Jersey	2,422	3,069	3,692	2,949	<--higher
Illinois	3,328	2,082	2,825	2,838	
Ohio	4,120	3,207	3,281	2,806	
Louisiana	2,758	1,321	337	2,739	
Massachusetts	2,804	1,593	2,050	2,450	
Kentucky	2,493	2,328	1,911	1,871	
Arizona	4,417	4,381	1,977	1,861	
South Carolina	2,546	1,697	2,083	1,820	
Colorado	1,584	934	751	1,722	
Indiana	2,359	1,130	1,431	1,701	
Oklahoma	2,782	1,070	1,660	1,677	
Tennessee	3,154	1,636	2,947	1,624	
Alabama	2,767	1,318	1,401	1,503	
Michigan	1,358	563	915	1,284	
Washington	1,410	678	525	1,281	
Utah	1,273	918	1,299	1,242	
Wisconsin	1,518	681	821	1,239	
Maryland	1,554	976	1,137	1,199	
Missouri	1,399	649	876	1,034	
Connecticut	937	869	888	1,003	

	Sorted				
	7D Ago	Last 3-day Trend			
	2/4/21	2/9/21	2/10/21	2/11/21	vs 7D ago
United States	115,115	84,923	88,681	95,956	-19,159
<b>States:</b>					
Mississippi	1,210	656	784	911	
Minnesota	1,410	572	651	898	
Arkansas	1,894	820	632	724	
Oregon	715	513	543	607	
Iowa	700	405	721	593	
Nevada	889	546	659	592	
New Mexico	559	413	510	533	
Rhode Island	587	330	459	488	
West Virginia	574	416	429	469	
Delaware	243	279	251	414	<--higher
Nebraska	507	344	462	374	
New Hampshire	396	419	329	365	
Idaho	402	437	458	323	
South Dakota	174	122	175	279	<--higher
Montana	301	374	307	247	
District of Columbia	166	145	67	185	
Maine	301	211	253	175	
Alaska	158	115	182	143	
North Dakota	98	99	39	139	<--higher
Vermont	174	59	17	127	
Wyoming	180	46	44	105	
Puerto Rico	311	189	70	102	
Hawaii	106	31	53	91	
U.S. Virgin Islands	0	7	12	20	
Guam	4	9	10	3	
Northern Mariana Islands	0	0	0	0	
Kansas	0	0	1,934	0	
American Samoa	0	0	0	0	



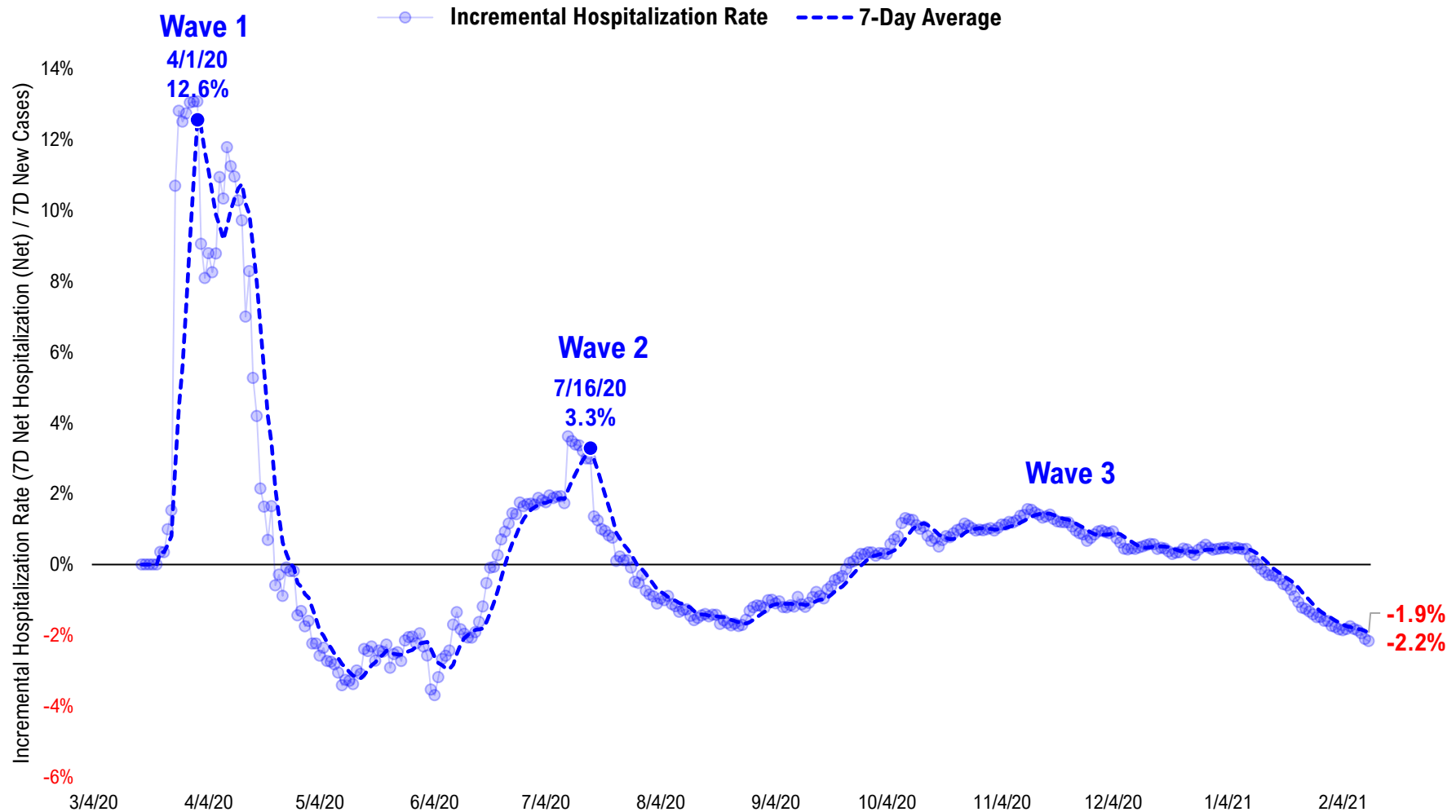
# #8: US Daily Hospitalizations...

### US Net Hospitalizations (aggregate of 50 states + Washington, D.C.)



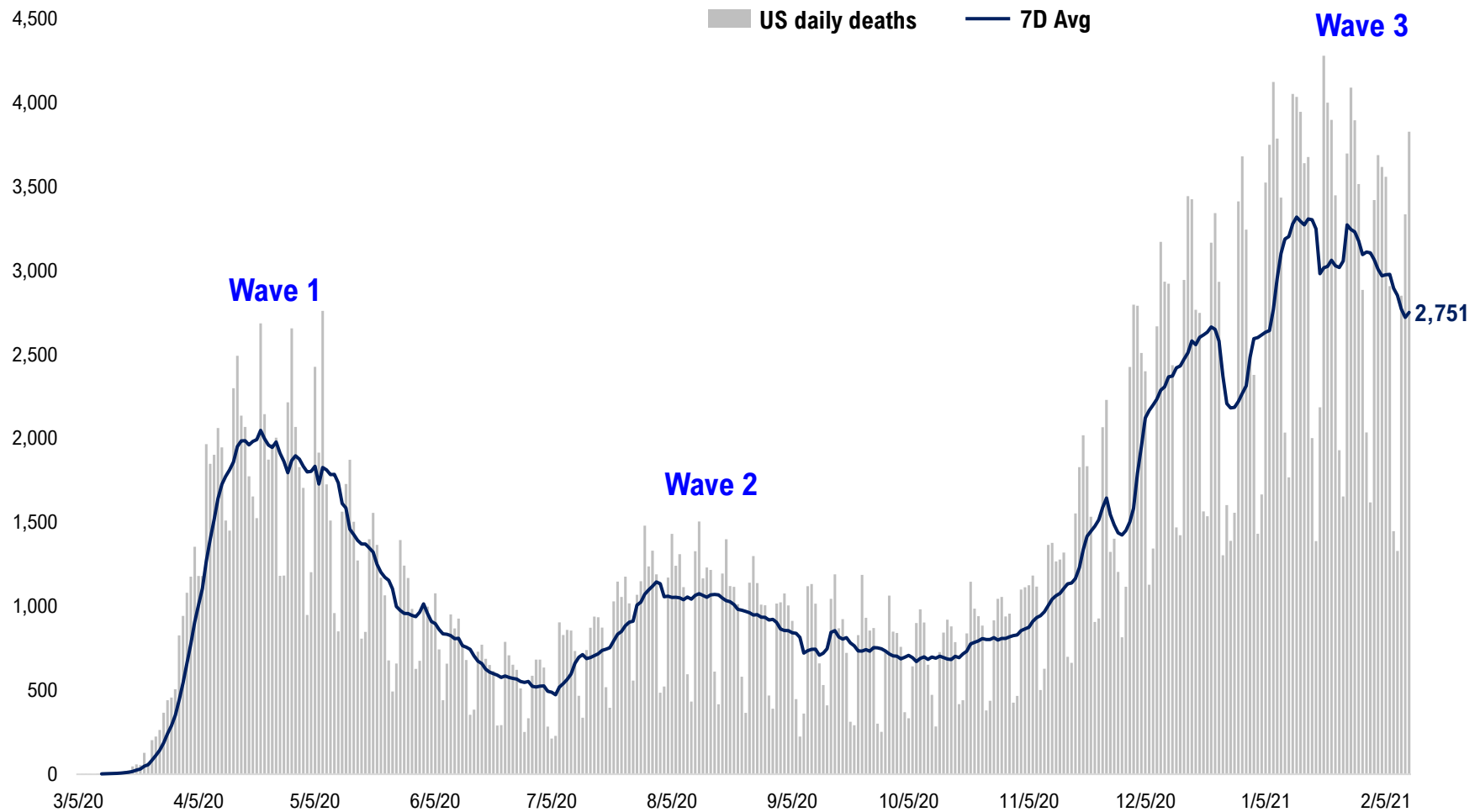
# #9: Incremental Hospitalization Rate...

**Incremental Hospitalization Rate: 7D Net Hospitalizations / 7D Total New Cases**  
(aggregate of 50 states + Washington, D.C.)



# #10: US Daily New Fatalities...

## US daily COVID-19 Fatalities



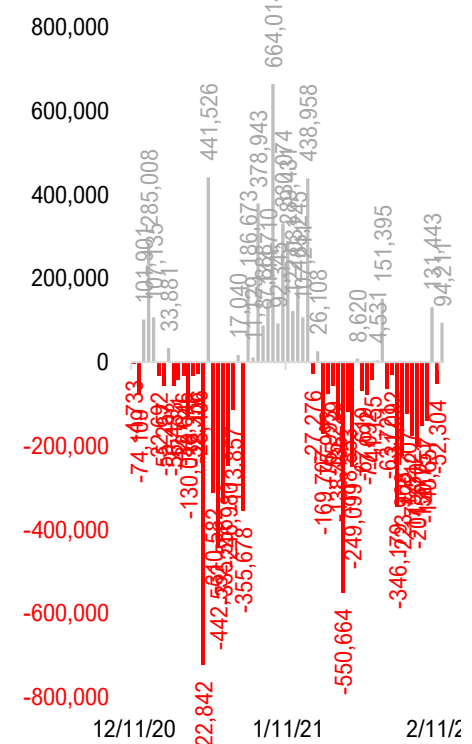
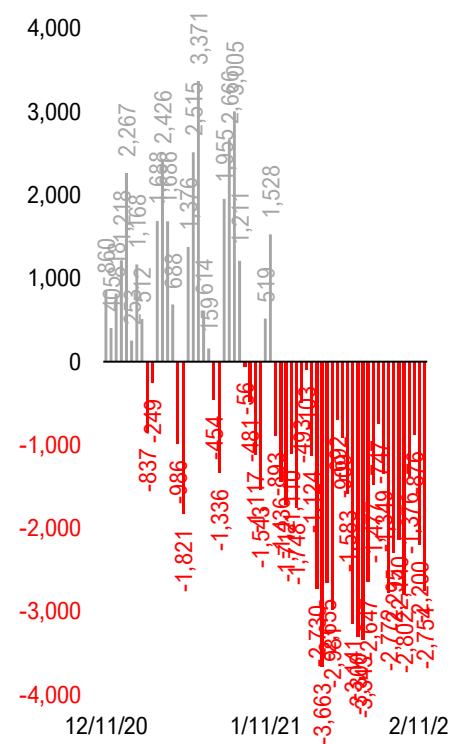
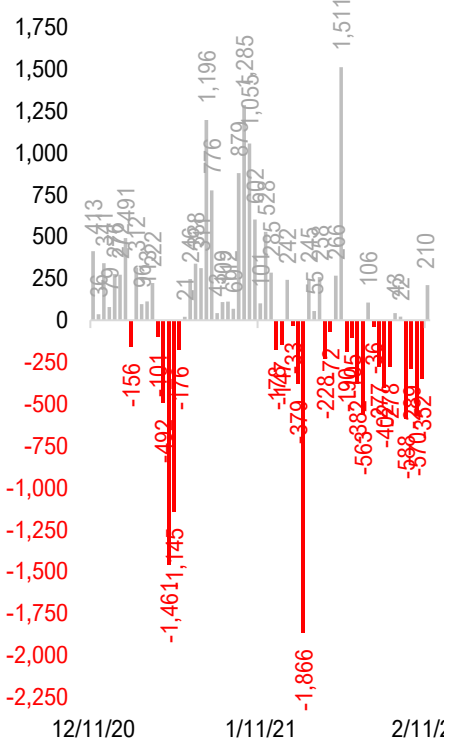
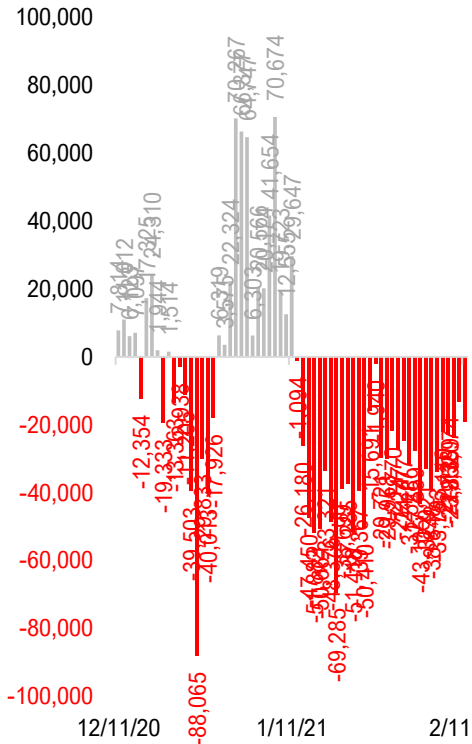
# #11: Rolling 7-Day Change in the Key Metrics... (Past 8 Weeks)

**Daily New Cases**  
(8/10/20 ex-CA; 9/4-9/5 ex-IL)

**Daily Deaths**

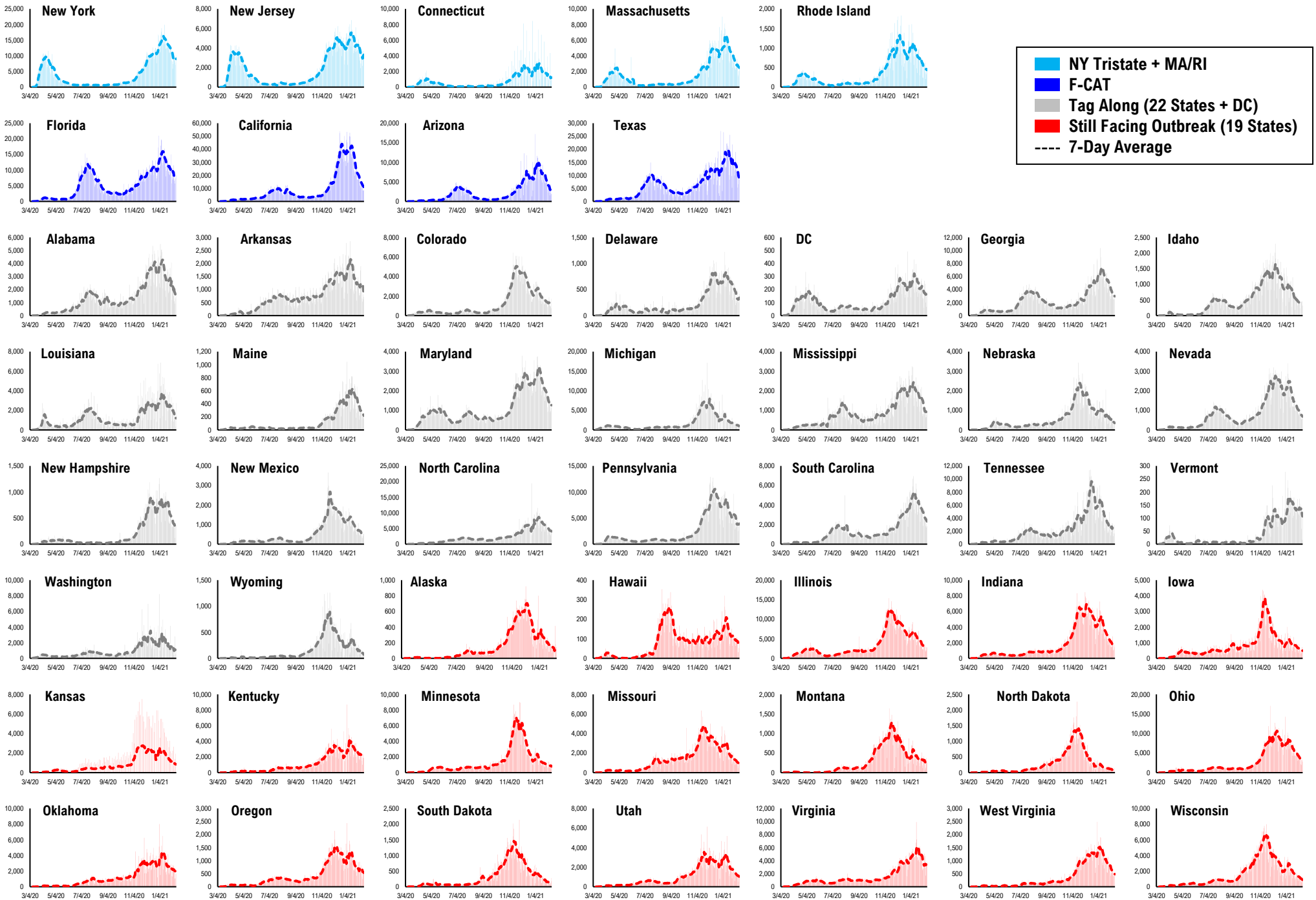
**Daily Net Hospitalization**  
(Red = more discharge than admission)

**Daily Tests**



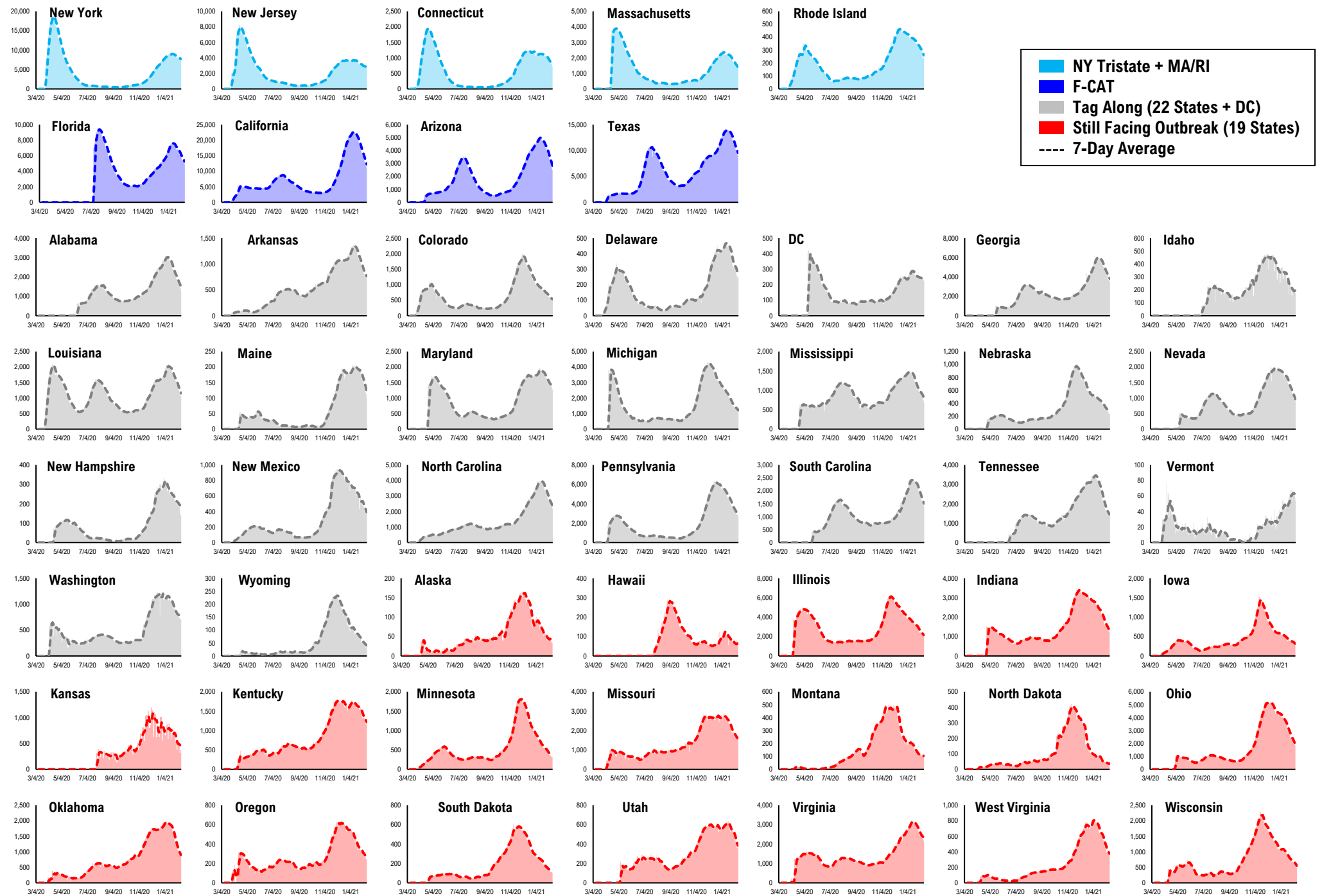
\* Ignored California between 8/10 and 8/23, due to its data glitch caused 300,000-case backlog  
Source: Fundstrat, COVID-19 Tracking Project, State Department of Health

# #12: Daily New Cases by States...

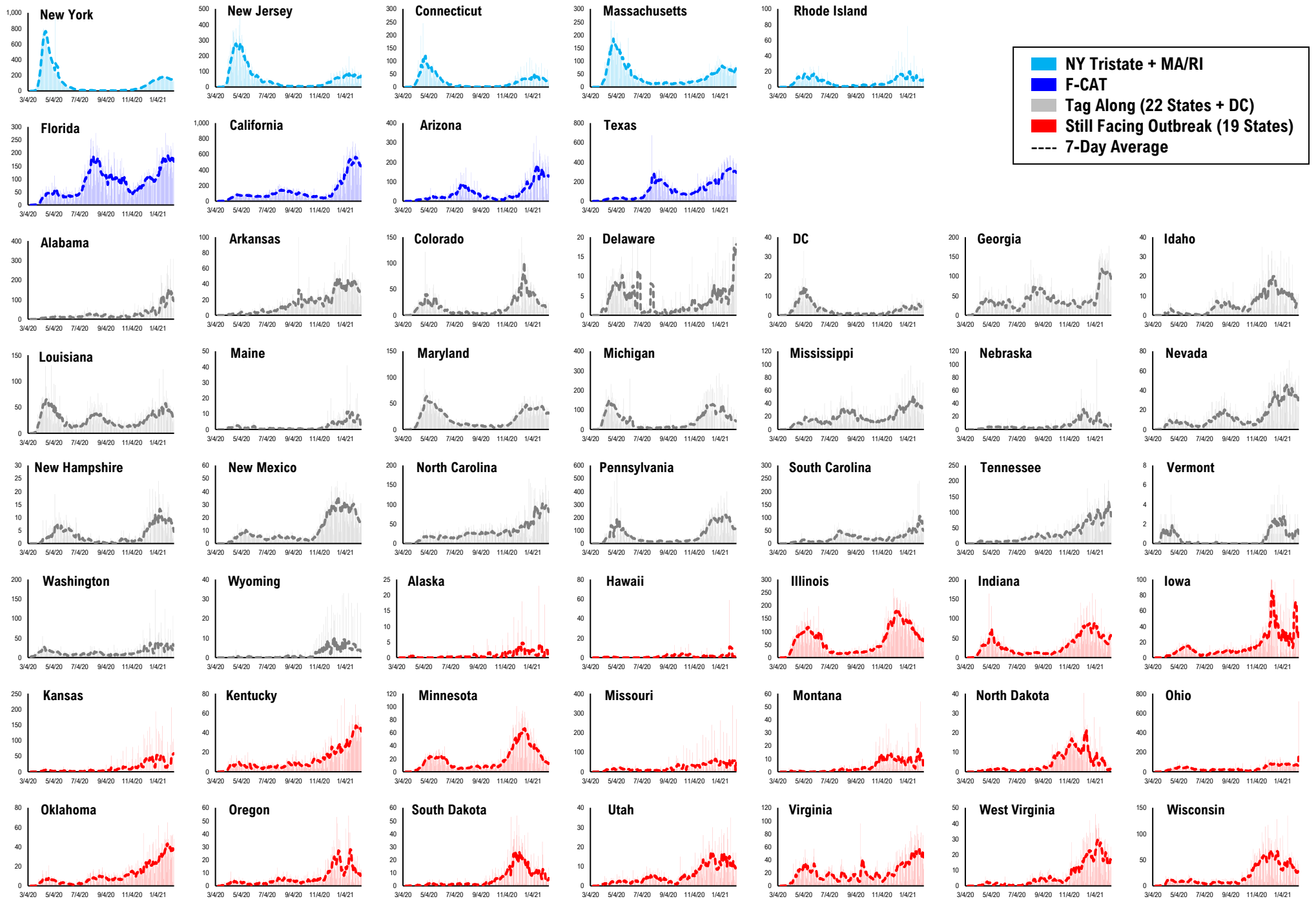




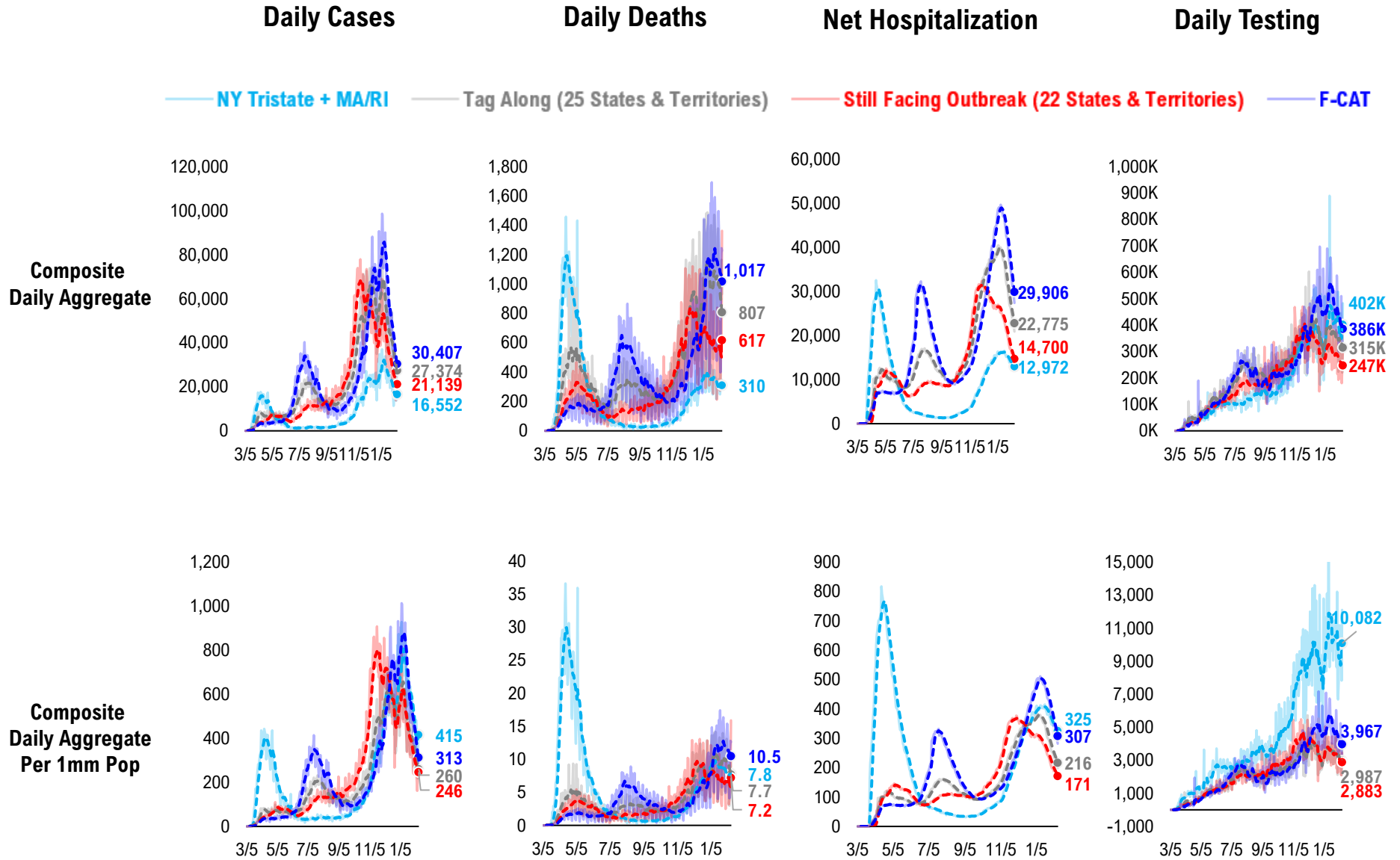
# #13: Current Hospitalizations by States...



# #14: Daily New Deaths by States...

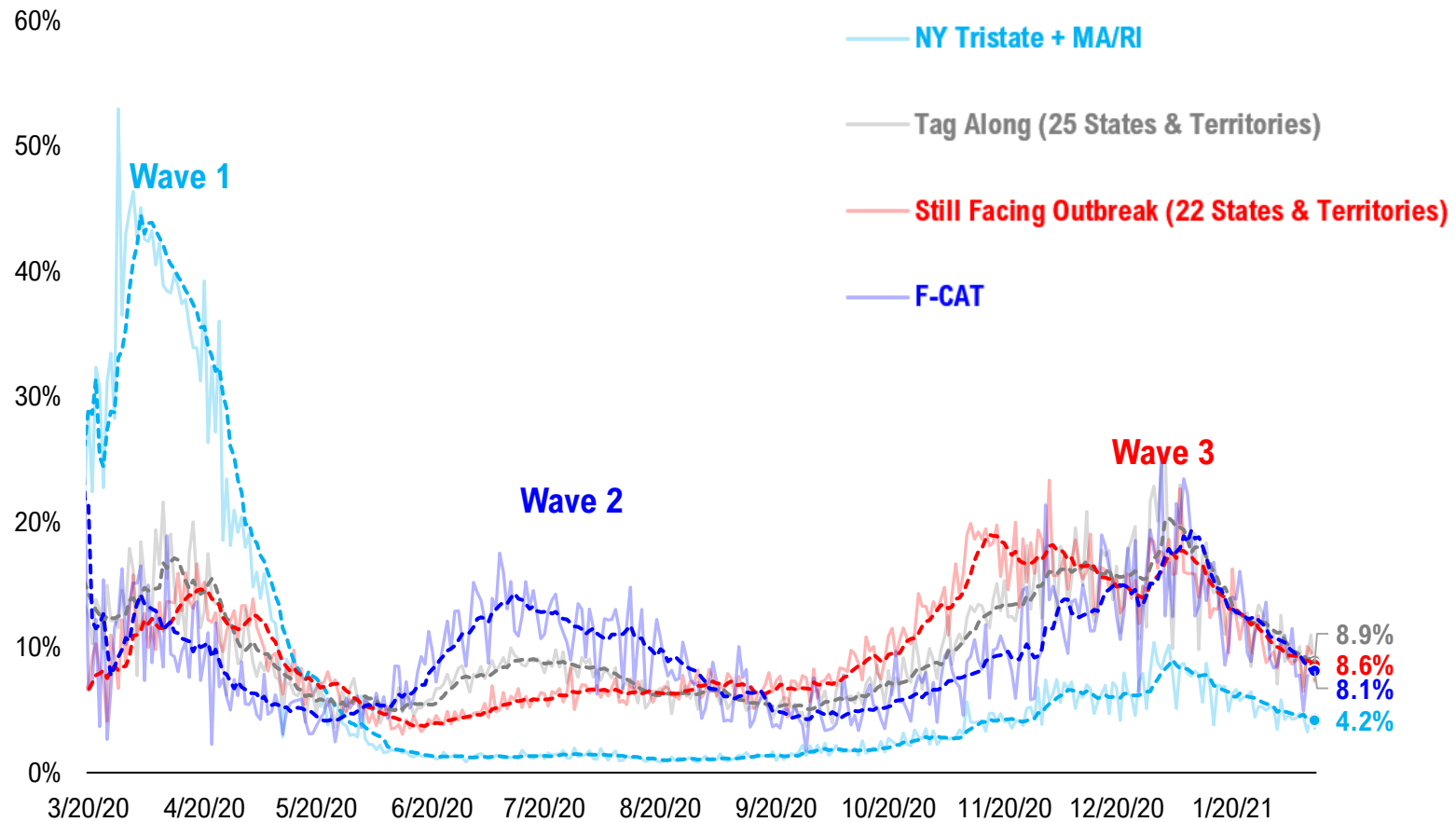


# #15: State COVID-19 situation by Tier...

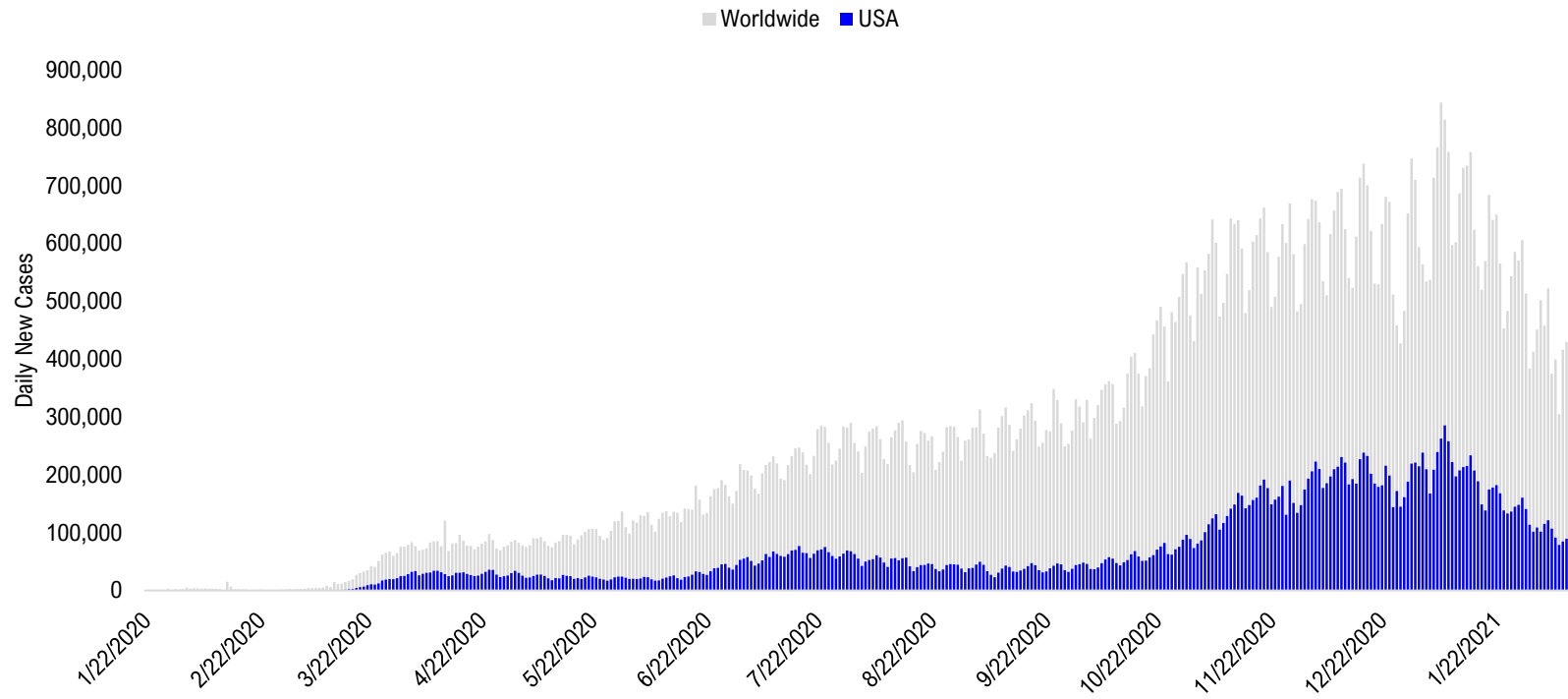


# #16: State COVID-19 Daily Positivity Rate by Tier...

## Composite Daily Positivity Rate



# #17: Global COVID-19 Situation at a Glance...



Sep 25	Oct 9	Oct 23	Nov 6	Nov 20	Dec 4	Dec 18	Jan 1	Jan 15	Jan 29	Feb 10
Pakistan + India + Bangladesh 88,225	Europe 112,288	Europe 223,800	Europe 312,557	Europe 279,289	Europe 258,867	Europe 282,868	Europe 275,313	Europe 266,593	Europe 218,592	Europe 146,383
Latin America 76,702	Pakistan + India + Bangladesh 76,149	US + Canada 71,893	US + Canada 116,878	US + Canada 182,604	US + Canada 213,729	US + Canada 239,315	US + Canada 223,879	US + Canada 227,855	US + Canada 155,663	US + Canada 87,504
Europe 67,906	Latin America 69,828	Latin America 69,395	Latin America 59,340	Latin America 68,233	Latin America 88,682	Latin America 108,004	Latin America 96,926	Latin America 139,455	Latin America 122,769	Latin America 80,925
US + Canada 43,790	US + Canada 54,955	Pakistan + India + Bangladesh 56,907	Pakistan + India + Bangladesh 52,404	Pakistan + India + Bangladesh 50,856	Pakistan + India + Bangladesh 41,815	Pakistan + India + Bangladesh 28,277	Africa 29,285	Africa 33,021	Asia ex-India+Pakistan 28,260	Asia ex-India+Pakistan 17,778
Asia ex-India+Pakistan 11,003	Asia ex-India+Pakistan 13,934	Asia ex-India+Pakistan 15,237	Africa 13,699	Asia ex-India+Pakistan 15,309	Asia ex-India+Pakistan 17,499	Africa 20,279	Asia ex-India+Pakistan 19,749	Asia ex-India+Pakistan 27,255	Africa 20,015	Pakistan + India + Bangladesh 12,591
Africa 8,251	Africa 9,962	Africa 10,618	Asia ex-India+Pakistan 13,638	Africa 14,984	Africa 16,694	Asia ex-India+Pakistan 17,898	Pakistan + India + Bangladesh 17,406	Pakistan + India + Bangladesh 19,368	Pakistan + India + Bangladesh 16,944	Africa 11,778



# Disclosures

This research is for the clients of FS Insight only. For important disclosures and rating histories regarding sectors or companies that are the subject of this report, please contact your sales representative or FS Insight at 150 East 52nd Street, New York, NY, 10022 USA.

## **Analyst Certification (Reg AC)**

Thomas J. Lee, the research analyst denoted by an “AC” on the cover of this report, hereby certifies that all of the views expressed in this report accurately reflect his personal views, which have not been influenced by considerations of the firm’s business or client relationships.

Neither I, nor a member of my household is an officer, director, or advisory board member of the issuer(s) or has another significant affiliation with the issuer(s) that is/are the subject of this research report. There is a possibility that we will from time to time have long or short positions in, and buy or sell, the securities or derivatives, if any, referred to in this research

## **Conflicts of Interest**

This research contains the views, opinions and recommendations of FS Insight . As of the time of writing and publication of this presentation, FS Insight does not know of, or have reason to know of any material conflicts of interest at the time of the publication of this presentation. The Company has no contractual relationship, nor have we received any compensation from any of the companies listed in this research report.

## **Analyst Industry/Sector Views**

Positive (+): The analyst expects the performance of his industry/sector coverage universe over the next 6-18 months to be attractive vs. the relevant broad market benchmark, being the S&P 500 for North America.

Neutral (N): The analyst expects the performance of his or her industry/sector coverage universe over the next 6-18 months to be in line with the relevant broad market benchmark, being the S&P 500 for North America.

Negative (-): The analyst expects his or her industry coverage universe over the next 6-18 months to underperform vs. the relevant broad market benchmark, being the S&P 500 for North America.

## **General Disclosures**

FS Insight is an independent research company and is not a registered investment advisor and is not acting as a broker dealer under any federal or state securities laws. FS Insight is a member of IRC Securities’ Research Prime Services Platform. IRC Securities is a FINRA registered broker-dealer that is focused on supporting the independent research industry. Certain personnel of FS Insight (i.e. Research Analysts) are registered representatives of IRC Securities, a FINRA member firm registered as a broker-dealer with the Securities and Exchange Commission and certain state securities regulators. As registered representatives and independent contractors of IRC Securities, such personnel may receive commissions paid to or shared with IRC Securities for transactions placed by FS Insight clients directly with IRC Securities or with securities firms that may share commissions with IRC Securities in accordance with applicable SEC and FINRA requirements. IRC Securities does not distribute the research of FS Insight , which is available to select institutional clients that have engaged FS Insight .

As registered representatives of IRC Securities our analysts must follow IRC Securities’ Written Supervisory Procedures. Notable compliance policies include (1) prohibition of insider trading or the facilitation thereof, (2) maintaining client confidentiality, (3) archival of electronic communications, and (4) appropriate use of electronic communications, amongst other compliance related policies.

FS Insight does not have the same conflicts that traditional sell-side research organizations have because FS Insight (1) does not conduct any investment banking activities, (2) does not manage any investment funds, and (3) our clients are only institutional investors.

This research is for the clients of FS Insight only. Additional information is available upon request. Information has been obtained from sources believed to be reliable but FS Insight does not warrant its completeness or accuracy except with respect to any disclosures relative to FS Insight and the analyst’s involvement (if any) with any of the subject companies of the research. All pricing is as of the market close for the securities discussed, unless otherwise stated. Opinions and estimates constitute our judgment as of the date of this material and are subject to change without notice. Past performance is not indicative of future results. This material is not intended as an offer or solicitation for the purchase or sale of any financial instrument. The opinions and recommendations herein do not take into account individual client circumstances, risk tolerance, objectives, or needs and are not intended as recommendations of particular securities, financial instruments or strategies. The recipient of this report must make its own independent decision regarding any securities or financial instruments mentioned herein. Except in circumstances where FS Insight expressly agrees otherwise in writing, FS Insight is not acting as a municipal advisor and the opinions or views contained herein are not intended to be, and do not constitute, advice, including within the meaning of Section 15B of the Securities Exchange Act of 1934. All research reports are disseminated and available to all clients simultaneously through electronic publication to our internal client website, FS Insight .com. Not all research content is redistributed to our clients or made available to third-party aggregators or the media. Please contact your sales representative if you would like to receive any of our research publications.

**Copyright 2021 FS Insight LLC. All rights reserved. No part of this material may be reprinted, sold or redistributed without the prior written consent of FS Insight LLC.**