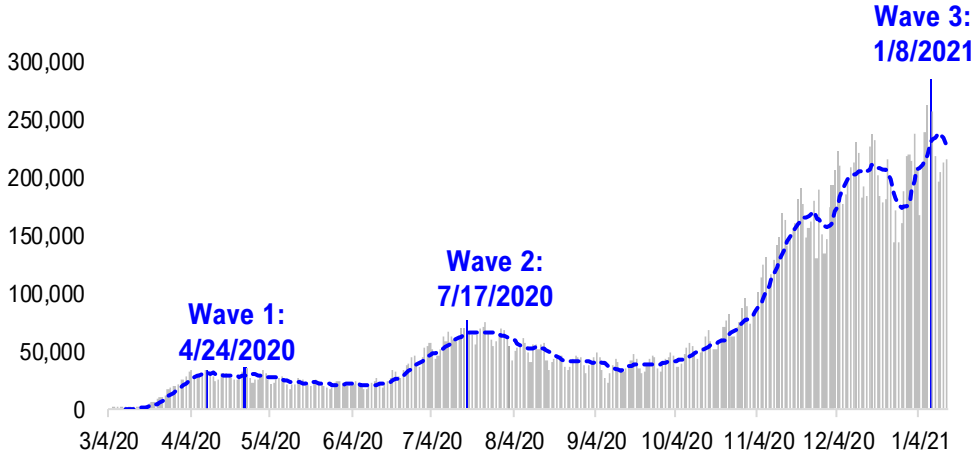


# FSInsight Daily COVID-19 Chartbook

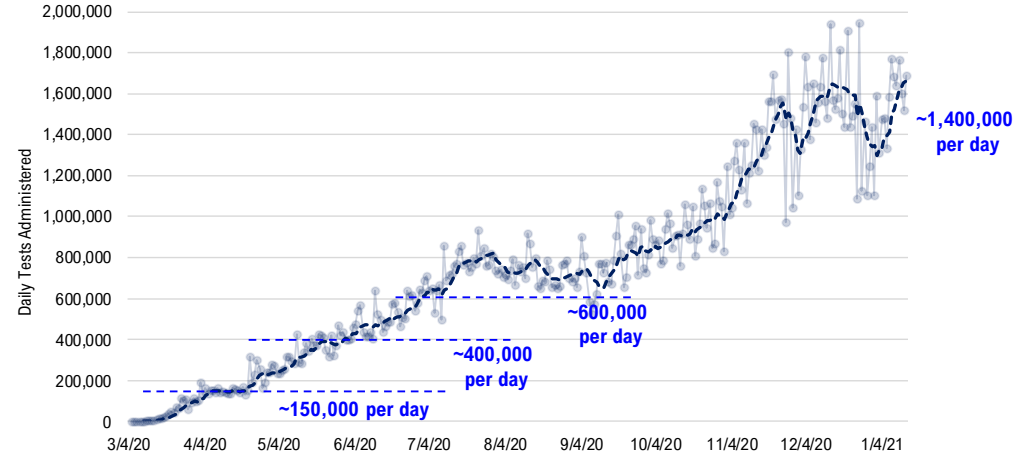


# #1: USA COVID-19 Situation at a Glance...

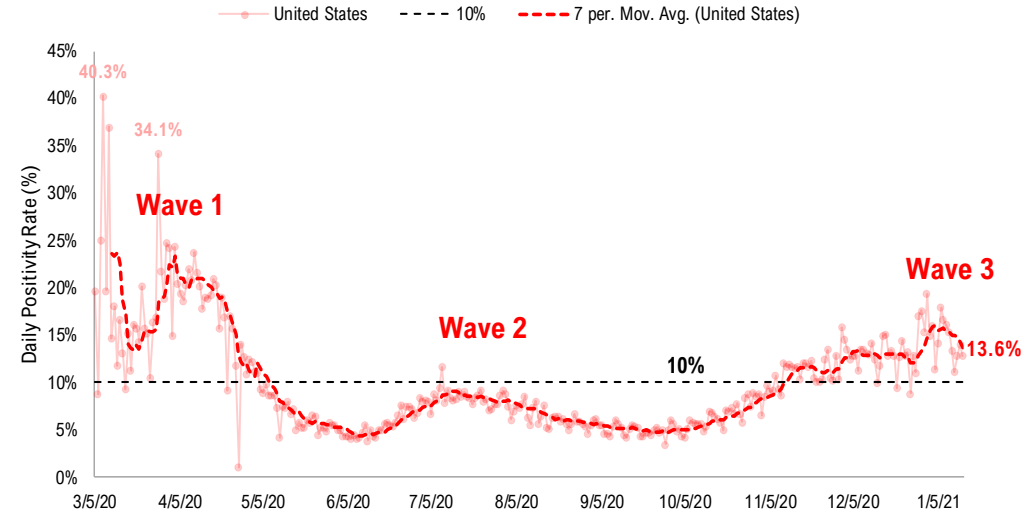
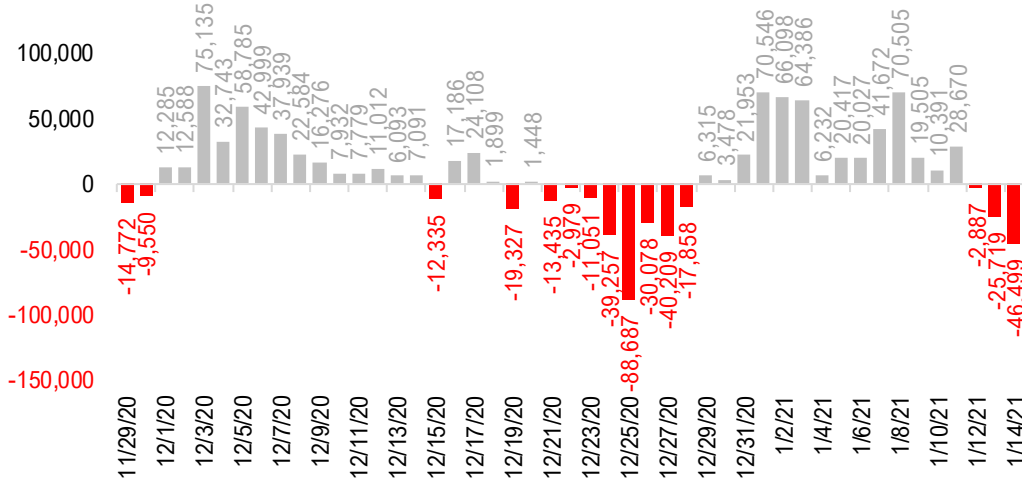
**US daily new cases**



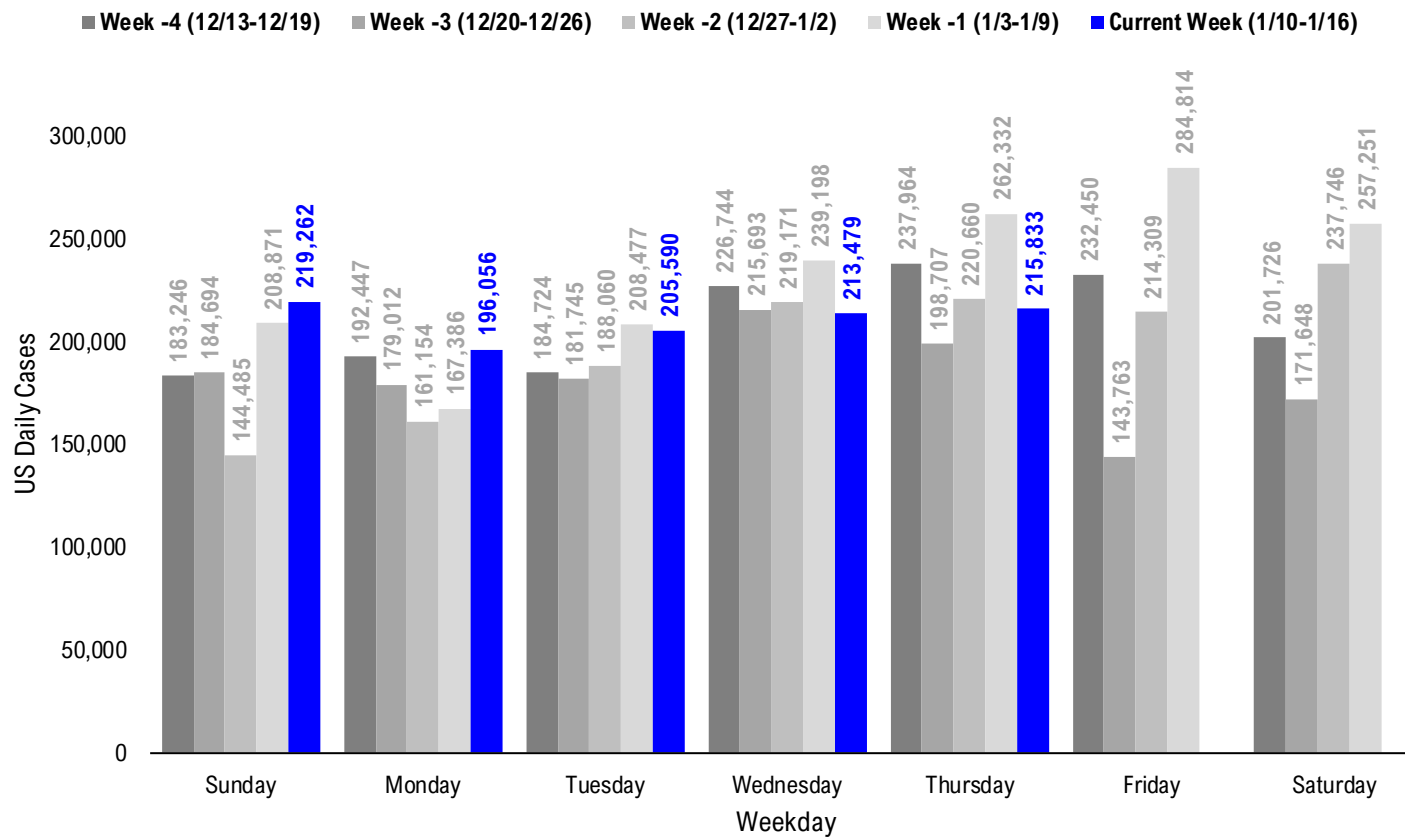
**USA total COVID-19 tests administered**



**US daily new cases rolling 7D delta**



# #2: USA COVID-19 Daily Cases Weekday Seasonality (Past 4 Weeks) ...



# #3: USA State COVID-19 Situation at a Glance...

	Sorted Daily Cases		Daily Cases (3D avg) per 1mm residents				Hospitalization			
	% US Pop	% US GDP	7D		Since Peak		7D Net		% Hospitalization / 7D New Cases	
			1/14	Delta	1/14	Delta	# Days	% Decline in Daily Cases		

	Sorted Daily Cases		Daily Cases (3D avg) per 1mm residents				Hospitalization			
	% US Pop	% US GDP	7D		Since Peak		7D Net		% Hospitalization / 7D New Cases	
			1/14	Delta	1/14	Delta	# Days	% Decline in Daily Cases		

United States

United States

### States:

1	California	11.9%	14.6%	35,930	-455	896	+71	4	-30%	-641	(0.2%)
2	Texas	8.7%	8.8%	20,047	+449	741	-14	7	-2%	268	0.2%
3	Florida	6.5%	5.0%	13,720	-6,096	661	-162	6	-25%	435	0.4%
4	New York	5.9%	8.1%	13,661	-3,975	745	-60	5	-19%	275	0.3%
5	North Carolina	3.2%	2.7%	9,853	-545	693	-26	5	-32%	30	0.1%
6	Ohio	3.5%	3.3%	7,654	-2,597	637	-94	35	-35%	-391	(0.7%)
7	Arizona	2.2%	1.7%	7,311	-2,602	985	-71	11	-41%	10	0.0%
8	Pennsylvania	3.9%	3.8%	7,175	-2,523	584	-145	40	-38%	-511	(0.9%)
9	Illinois	3.8%	4.2%	6,652	-2,105	504	-105	62	-53%	-410	(0.9%)
10	Georgia	3.2%	2.9%	6,364	-708	565	-24	4	-32%	217	0.4%
11	Massachusetts	2.1%	2.8%	5,955	-1,593	840	-81	5	-25%	-160	(0.4%)
12	New Jersey	2.7%	3.0%	5,866	-326	634	+13	5	-8%	-73	(0.2%)
13	Louisiana	1.4%	1.3%	5,318	+792	924	-213	7	-19%	-58	(0.3%)
14	Virginia	2.6%	2.6%	5,294	-85	564	-27	5	-12%	196	0.6%
15	Tennessee	2.1%	1.8%	4,983	-4,017	639	-434	27	-57%	-383	(1.1%)
16	South Carolina	1.6%	1.1%	4,945	+180	741	-84	5	-28%	2	0.0%
17	Indiana	2.0%	1.8%	4,375	-2,895	552	-280	40	-54%	-372	(1.2%)
18	Kentucky	1.3%	1.0%	4,063	-826	868	-48	6	-24%	-83	(0.3%)
19	Alabama	1.5%	1.1%	3,588	-1,458	719	-309	7	-30%	-165	(0.7%)
20	Oklahoma	1.2%	1.0%	3,142	-639	780	+57	4	-42%	-143	(0.5%)
21	Maryland	1.8%	2.0%	2,948	-22	448	+3	4	-25%	9	0.0%
22	Missouri	1.8%	1.5%	2,780	-1,203	379	-136	61	-53%	-170	(0.9%)
23	Utah	1.0%	0.9%	2,742	-1,855	1048	-167	6	-17%	20	0.1%
24	Wisconsin	1.8%	1.6%	2,712	-1,079	437	-170	62	-66%	-103	(0.6%)
25	Michigan	3.0%	2.6%	2,698	-1,317	247	-108	57	-72%	-340	(1.9%)
26	Washington	2.3%	2.7%	2,442	-653	277	-30	50	-50%	-76	(0.4%)
27	Colorado	1.7%	1.8%	2,403	-1,070	368	-182	54	-65%	-51	(0.3%)
28	Nevada	0.9%	0.8%	2,187	-1,215	641	-199	5	-34%	-172	(1.1%)

### States:

29	Mississippi	0.9%	0.6%	1,948	-1,307	620	-255	5	-36%	-42	(0.3%)
30	Arkansas	0.9%	0.6%	1,735	-542	599	-161	4	-25%	-31	(0.2%)
31	Minnesota	1.7%	1.8%	1,581	-402	259	-89	45	-82%	-142	(1.1%)
32	Nebraska	0.6%	0.6%	1,529	+93	547	-51	56	-62%	-57	(0.8%)
33	New Mexico	0.6%	0.5%	1,424	-411	549	-167	55	-64%	-31	(0.4%)
34	Iowa	1.0%	0.9%	1,146	-148	341	-116	62	-73%	-81	(1.1%)
35	Oregon	1.3%	1.2%	1,137	+275	288	+80	39	-30%	-60	(0.7%)
36	Idaho	0.5%	0.4%	994	-73	582	-140	35	-49%	-28	(0.5%)
37	Connecticut	1.1%	1.3%	968	-2,336	765	+6	1	-44%	31	0.2%
38	Rhode Island	0.3%	0.3%	901	-227	874	-347	40	-44%	-22	(0.3%)
39	Delaware	0.3%	0.4%	892	-328	766	-129	5	-18%	13	0.3%
40	West Virginia	0.5%	0.4%	827	-497	546	-219	11	-49%	-53	(0.6%)
41	Maine	0.4%	0.3%	808	+273	582	+171	0	0%	-9	(0.2%)
42	New Hampshire	0.4%	0.4%	653	+230	606	+132	10	-25%	-44	(0.8%)
43	Montana	0.3%	0.2%	457	-233	454	-196	60	-65%	-16	(0.5%)
44	Wyoming	0.2%	0.2%	412	+134	752	+222	56	-56%	-23	(0.9%)
45	Alaska	0.2%	0.3%	332	+6	336	-50	40	-70%	-8	(0.4%)
46	South Dakota	0.3%	0.3%	317	-131	382	-179	61	-82%	-17	(0.7%)
47	North Dakota	0.2%	0.3%	243	-81	240	-161	61	-90%	-5	(0.4%)
48	District of Columbia	0.2%	0.7%	220	-48	391	-9	4	-21%	9	0.4%
49	Vermont	0.2%	0.2%	205	-40	264	-19	5	-22%	6	0.5%
50	Hawaii	0.4%	0.5%	175	-146	93	-45	138	-55%	-17	(1.3%)
51	Puerto Rico	1.0%	0.5%	108	-103	124	+18	26	-65%	-4	(0.1%)
52	Guam	0.0%	0.0%	13	+5	68	-16	65	-94%	-6	(0.5%)
53	U.S. Virgin Islands	0.0%	0.0%	0	-23	72	-128	146	-83%	0	0.0%
54	Northern Mariana	0.0%	0.0%	0	-1	18	+0	79	-75%	0	0.0%
55	Kansas	0.9%	0.8%	0	+0	519	-110	50	-66%	54	0.4%
56	American Samoa	0.0%	0.0%	0	+0	0	+0	0	0%	0	0.0%



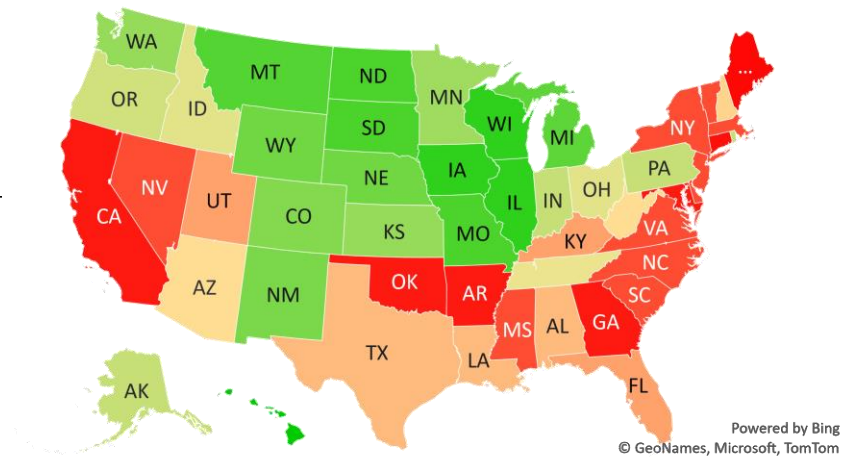
# #5: # of Days since Daily Case Peaked by States...

## # Days since Daily Cases (3D Avg) Peak (as of 1/14)

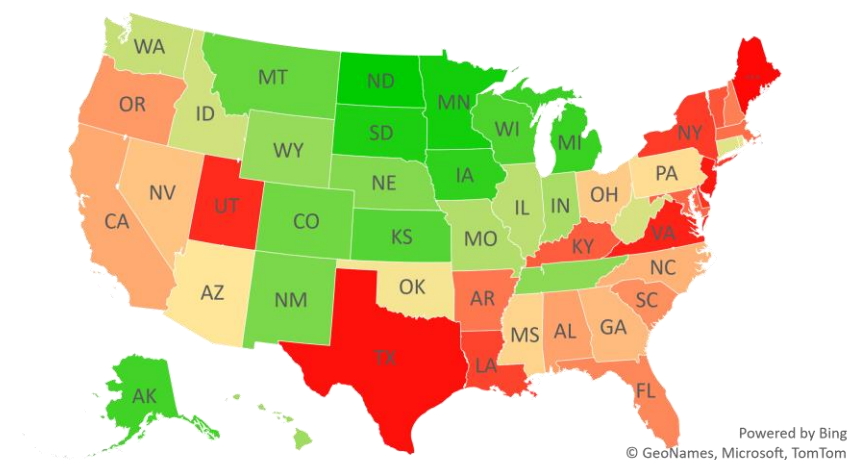
	Sorted			
	Peak Date	1/14/21	% off the Peak	% US Pop
United States	1/9/21	5	-21%	100%
<b>States:</b>				
U.S. Virgin Islands	8/21/20	146	-83%	0.0%
Hawaii	8/29/20	138	-55%	0.4%
Northern Mariana Island	10/27/20	79	-75%	0.0%
Guam	11/10/20	65	-94%	0.0%
Wisconsin	11/13/20	62	-66%	1.8%
Illinois	11/13/20	62	-53%	3.8%
Iowa	11/13/20	62	-73%	1.0%
South Dakota	11/14/20	61	-82%	0.3%
North Dakota	11/14/20	61	-90%	0.2%
Missouri	11/14/20	61	-53%	1.8%
Montana	11/15/20	60	-65%	0.3%
Michigan	11/18/20	57	-72%	3.0%
Wyoming	11/19/20	56	-56%	0.2%
Nebraska	11/19/20	56	-62%	0.6%
New Mexico	11/20/20	55	-64%	0.6%
Colorado	11/21/20	54	-65%	1.7%
Washington	11/25/20	50	-50%	2.3%
Kansas	11/25/20	50	-66%	0.9%
Minnesota	11/30/20	45	-82%	1.7%
Rhode Island	12/5/20	40	-44%	0.3%
Pennsylvania	12/5/20	40	-38%	3.9%
Indiana	12/5/20	40	-54%	2.0%
Alaska	12/5/20	40	-70%	0.2%
Oregon	12/6/20	39	-30%	1.3%
Ohio	12/10/20	35	-35%	3.5%
Idaho	12/10/20	35	-49%	0.5%
Tennessee	12/18/20	27	-57%	2.1%
Puerto Rico	12/19/20	26	-65%	1.0%

	Sorted			
	Peak Date	1/14/21	% off the Peak	% US Pop
United States	1/9/21	5	-21%	100%
<b>States:</b>				
West Virginia	1/3/21	11	-49%	0.5%
Arizona	1/3/21	11	-41%	2.2%
New Hampshire	1/4/21	10	-25%	0.4%
Texas	1/7/21	7	-2%	8.7%
Louisiana	1/7/21	7	-19%	1.4%
Alabama	1/7/21	7	-30%	1.5%
Utah	1/8/21	6	-17%	1.0%
Kentucky	1/8/21	6	-24%	1.3%
Florida	1/8/21	6	-25%	6.5%
Vermont	1/9/21	5	-22%	0.2%
Virginia	1/9/21	5	-12%	2.6%
South Carolina	1/9/21	5	-28%	1.6%
New York	1/9/21	5	-19%	5.9%
Nevada	1/9/21	5	-34%	0.9%
New Jersey	1/9/21	5	-8%	2.7%
North Carolina	1/9/21	5	-32%	3.2%
Mississippi	1/9/21	5	-36%	0.9%
Massachusetts	1/9/21	5	-25%	2.1%
Delaware	1/9/21	5	-18%	0.3%
Oklahoma	1/10/21	4	-42%	1.2%
Maryland	1/10/21	4	-25%	1.8%
Georgia	1/10/21	4	-32%	3.2%
District of Columbia	1/10/21	4	-21%	0.2%
California	1/10/21	4	-30%	11.9%
Arkansas	1/10/21	4	-25%	0.9%
Connecticut	1/13/21	1	-44%	1.1%
Maine	1/14/21	0	0%	0.4%

## # Days since Daily Case Peak: **Longer = Good**



## Daily Cases % off the Peak: **Larger Decline = Good**



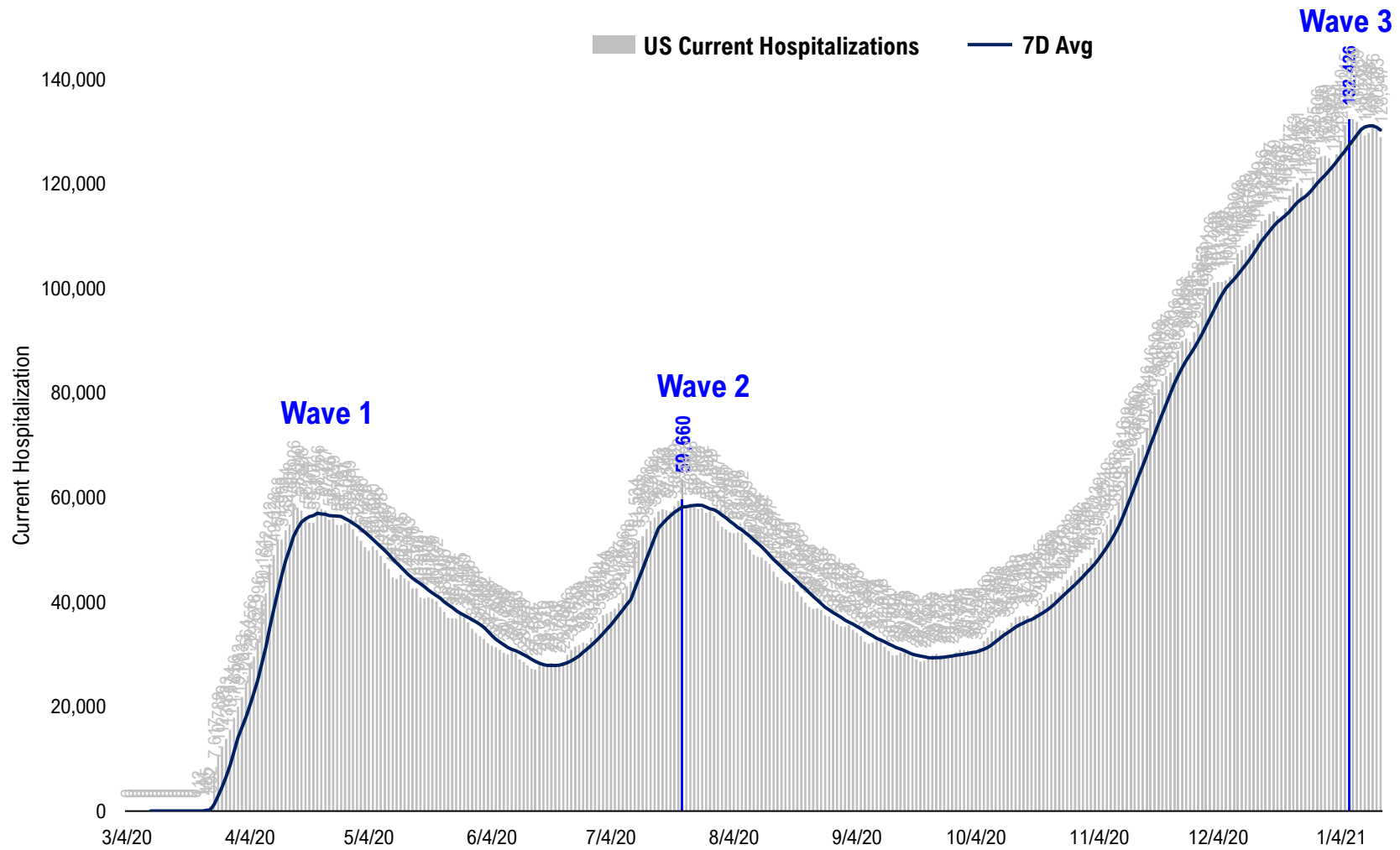
# #6: US New Cases by States... (sorted by today's new cases)

	Sorted				
	7D Ago	Last 3-day Trend			
	1/7/21	1/12/21	1/13/21	1/14/21	vs 7D ago
United States	262,332	205,590	213,479	215,833	-46,499
<b>States:</b>					
California	36,385	36,487	33,751	35,930	
Texas	19,598	22,110	22,270	20,047	
Florida	19,816	14,896	13,990	13,720	
New York	17,636	15,214	14,577	13,661	
North Carolina	10,398	6,851	5,098	9,853	
Ohio	10,251	7,981	6,701	7,654	
Arizona	9,913	8,559	5,629	7,311	
Pennsylvania	9,698	7,275	7,960	7,175	
Illinois	8,757	6,642	5,862	6,652	
Georgia	7,072	5,982	5,662	6,364	
Massachusetts	7,548	5,487	5,918	5,955	
New Jersey	6,192	4,156	6,859	5,866	
Louisiana	4,526	4,673	2,902	5,318	
Virginia	5,379	4,561	4,598	5,294	
Tennessee	9,000	3,478	4,625	4,983	
South Carolina	4,765	1,565	4,939	4,945	
Indiana	7,270	3,139	3,642	4,375	
Kentucky	4,889	3,022	4,553	4,063	
Alabama	5,046	3,848	3,147	3,588	
Oklahoma	3,781	2,210	3,907	3,142	
Maryland	2,970	2,665	2,516	2,948	
Missouri	3,983	2,131	2,060	2,780	
Utah	4,597	2,146	5,188	2,742	
Wisconsin	3,791	2,790	2,134	2,712	
Michigan	4,015	1,994	2,694	2,698	
Washington	3,095	1,389	2,500	2,442	
Colorado	3,473	1,511	2,438	2,403	
Nevada	3,402	2,593	1,143	2,187	

	Sorted				
	7D Ago	Last 3-day Trend			
	1/7/21	1/12/21	1/13/21	1/14/21	vs 7D ago
United States	262,332	205,590	213,479	215,833	-46,499
<b>States:</b>					
Mississippi	3,255	1,648	1,942	1,948	
Arkansas	2,277	2,095	1,591	1,735	
Minnesota	1,983	1,315	1,487	1,581	
Nebraska	1,436	644	1,000	1,529	
New Mexico	1,835	887	1,145	1,424	
Iowa	1,294	637	1,441	1,146	
Oregon	862	1,173	1,329	1,137	<--higher
Idaho	1,067	1,034	1,091	994	
Connecticut	3,304	3,689	3,529	968	
Rhode Island	1,128	786	1,092	901	
Delaware	1,220	619	727	892	
West Virginia	1,324	921	1,189	827	
Maine	535	715	824	808	<--higher
New Hampshire	423	841	977	653	<--higher
Montana	690	424	576	457	
Wyoming	278	677	217	412	<--higher
Alaska	326	121	285	332	
South Dakota	448	244	452	317	
North Dakota	324	138	167	243	
District of Columbia	268	430	177	220	
Vermont	245	169	121	205	
Hawaii	321	114	106	175	
Puerto Rico	211	888	191	108	
Guam	8	0	21	13	<--higher
U.S. Virgin Islands	23	23	0	0	
Northern Mariana Islands	1	3	0	0	
Kansas	0	0	4,539	0	
American Samoa	0	0	0	0	

# #7: US Daily Hospitalizations...

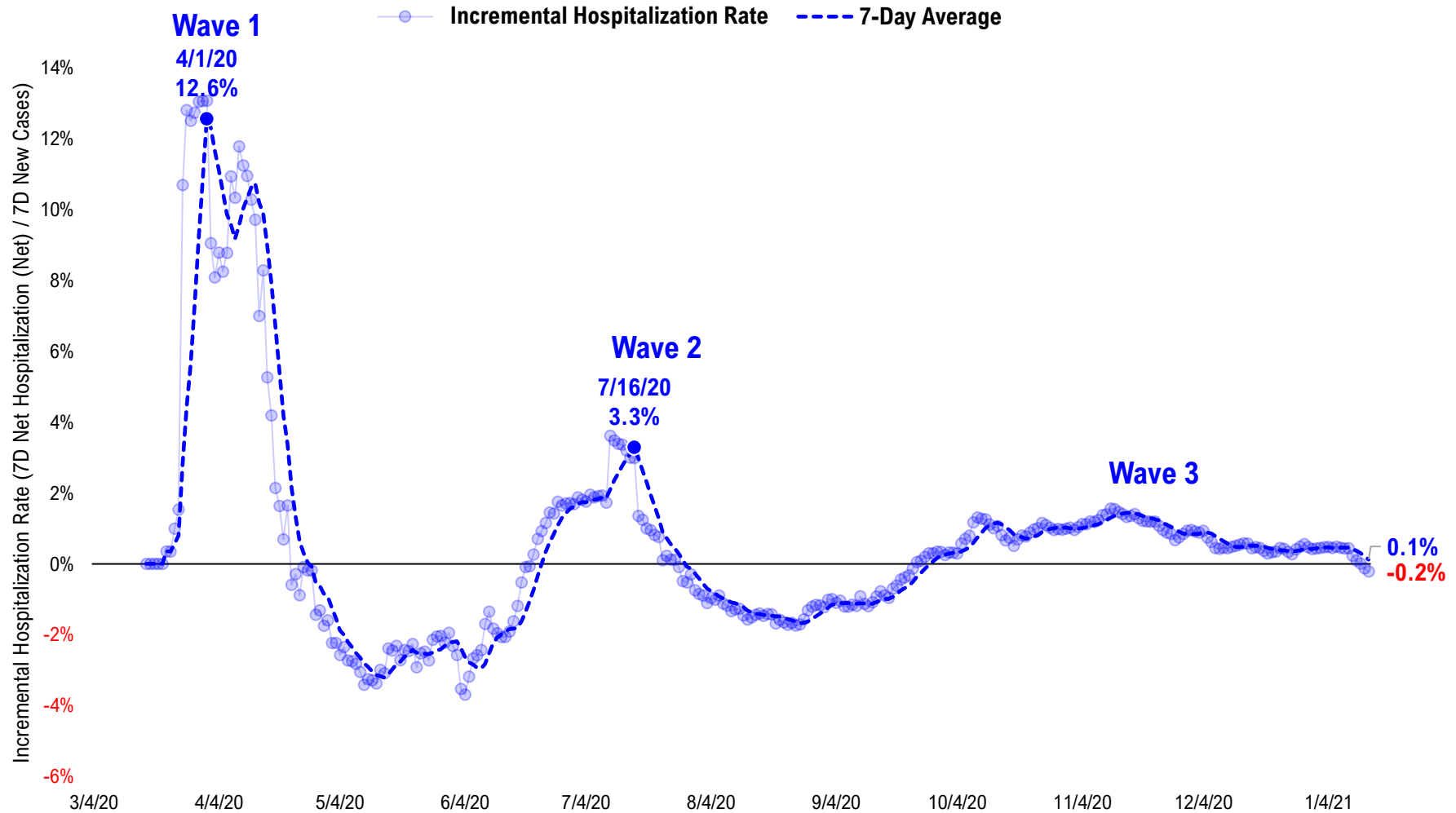
### US Net Hospitalizations (aggregate of 50 states + Washington, D.C.)





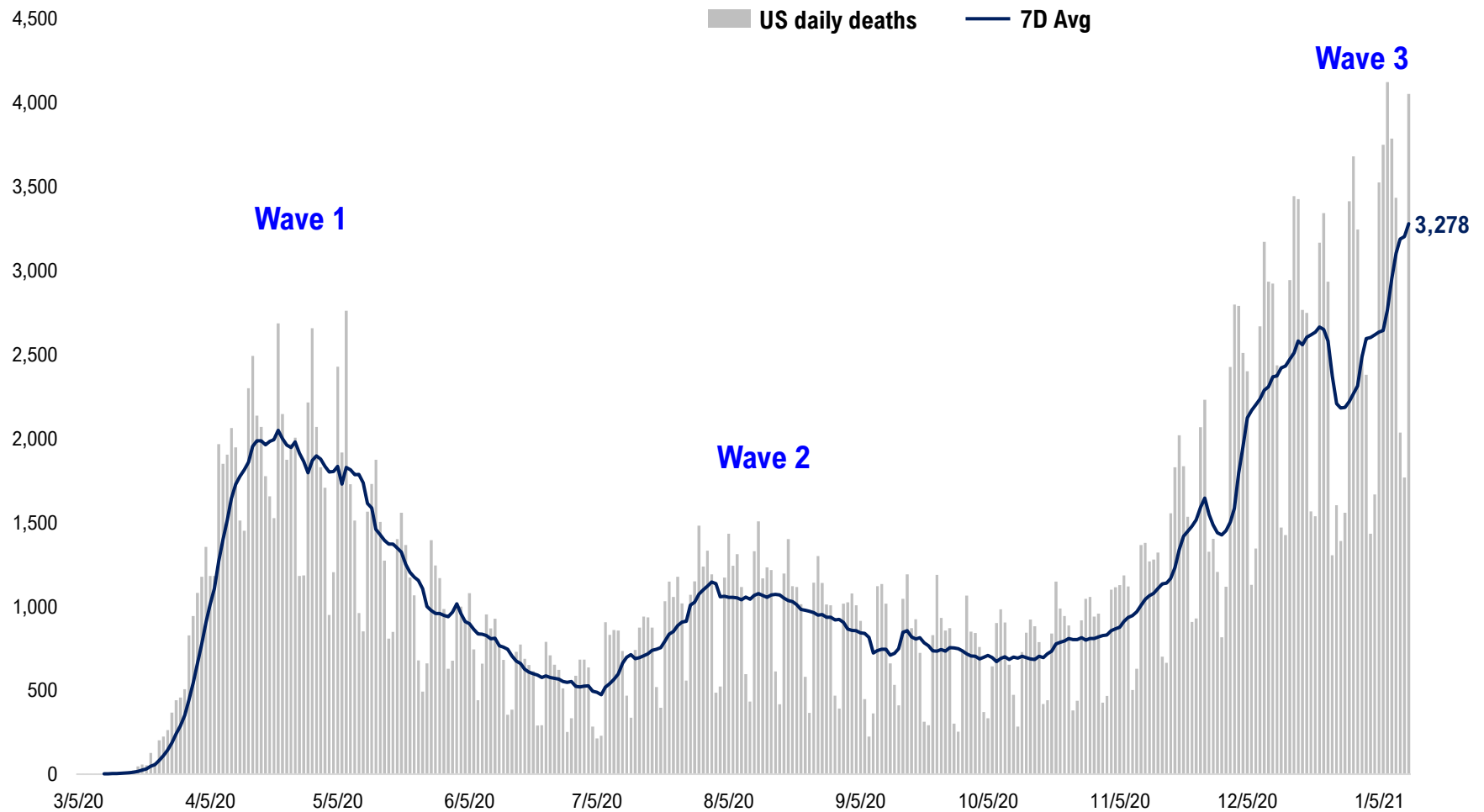
# #8: Incremental Hospitalization Rate...

Incremental Hospitalization Rate: 7D Net Hospitalizations / 7D Total New Cases  
(aggregate of 50 states + Washington, D.C.)



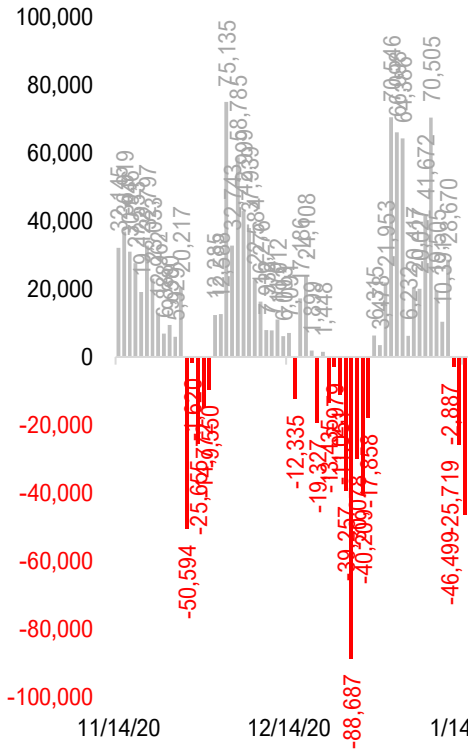
# #9: US Daily New Fatalities...

## US daily COVID-19 Fatalities

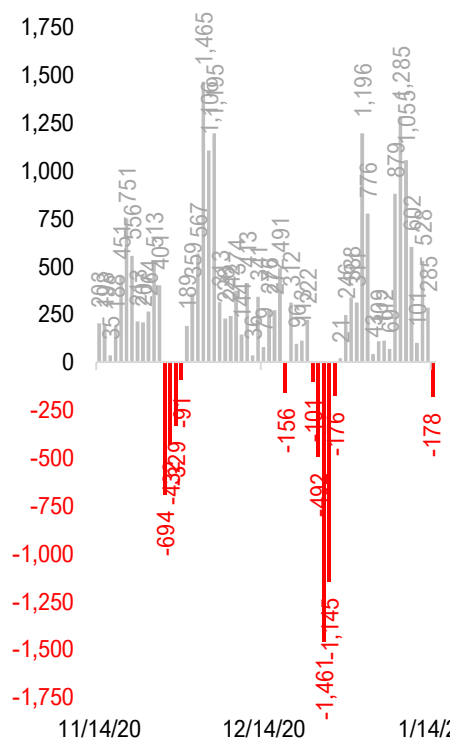


# #10: Rolling 7-Day Change in the Key Metrics... (Past 8 Weeks)

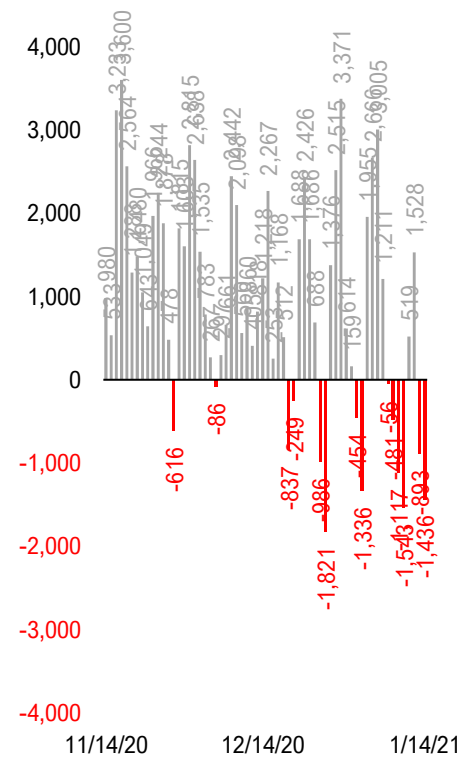
**Daily New Cases**  
(8/10-8/23 ex-CA; 9/4-9/5 ex-IL)



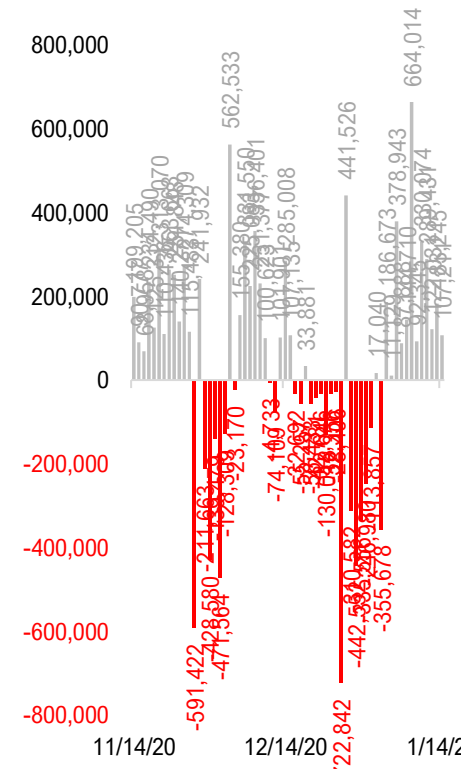
**Daily Deaths**



**Daily Net Hospitalization**  
(Red = more discharge than admission)

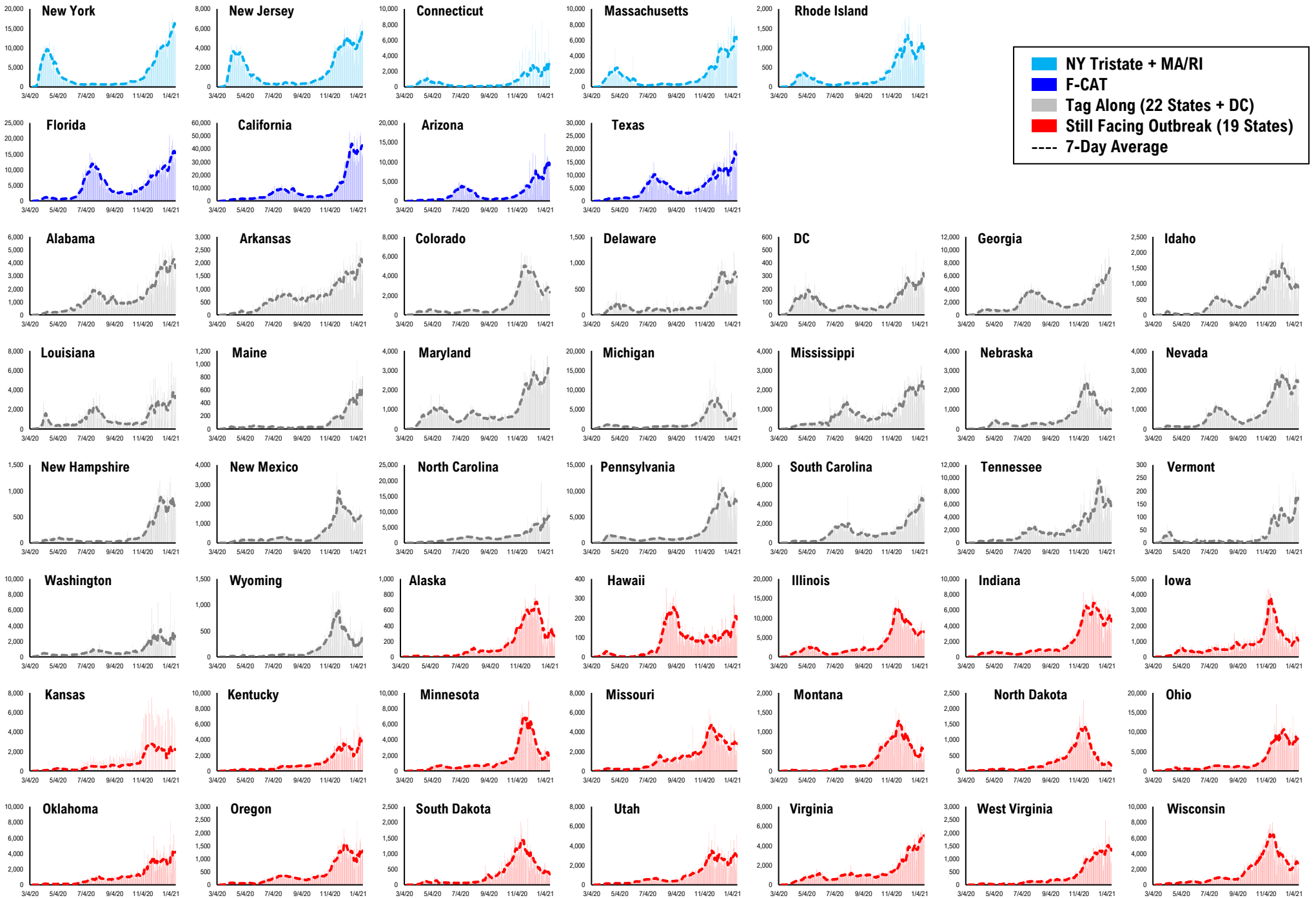


**Daily Tests**

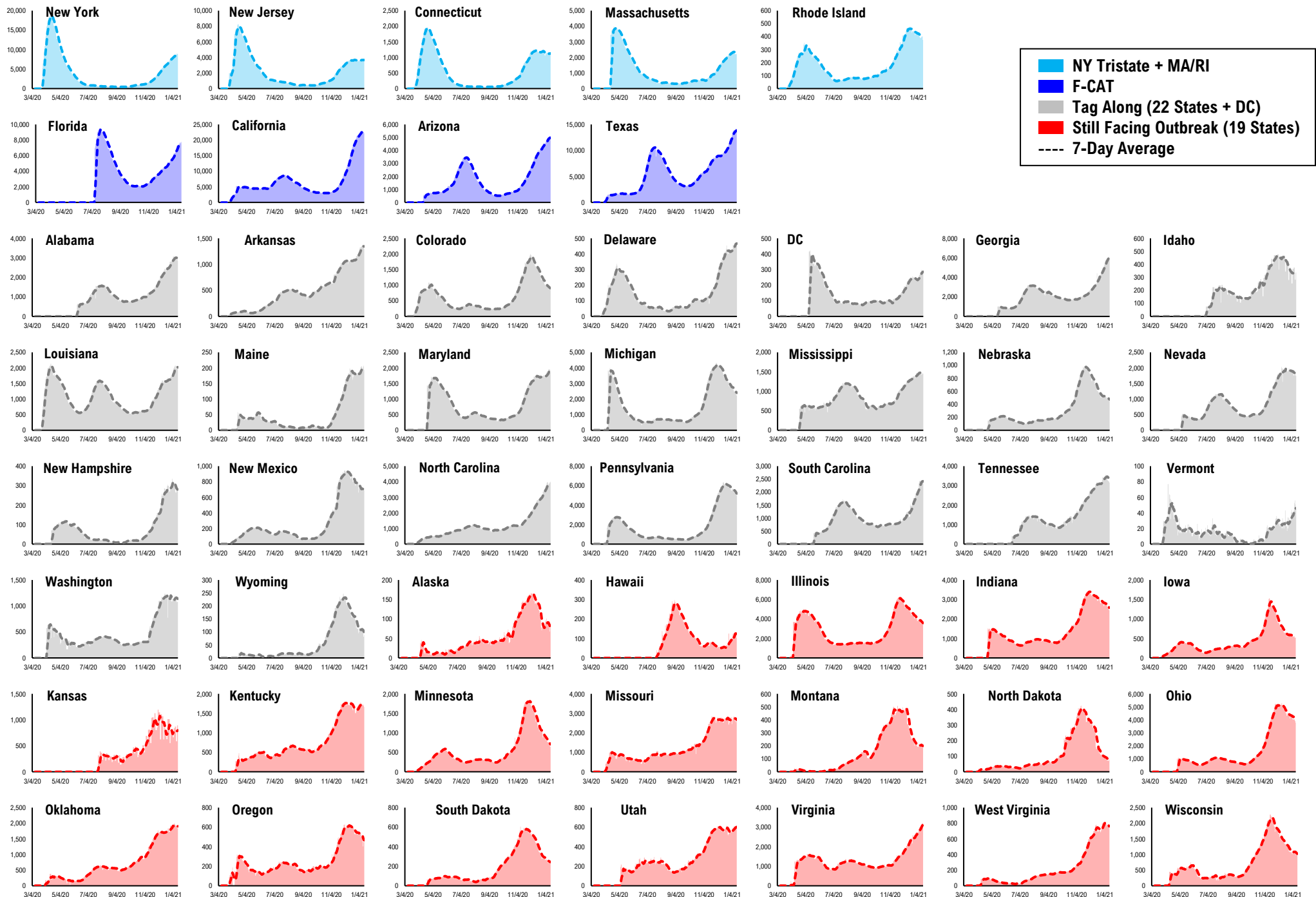


\* Ignored California between 8/10 and 8/23, due to its data glitch caused 300,000-case backlog  
Source: Fundstrat, COVID-19 Tracking Project, State Department of Health

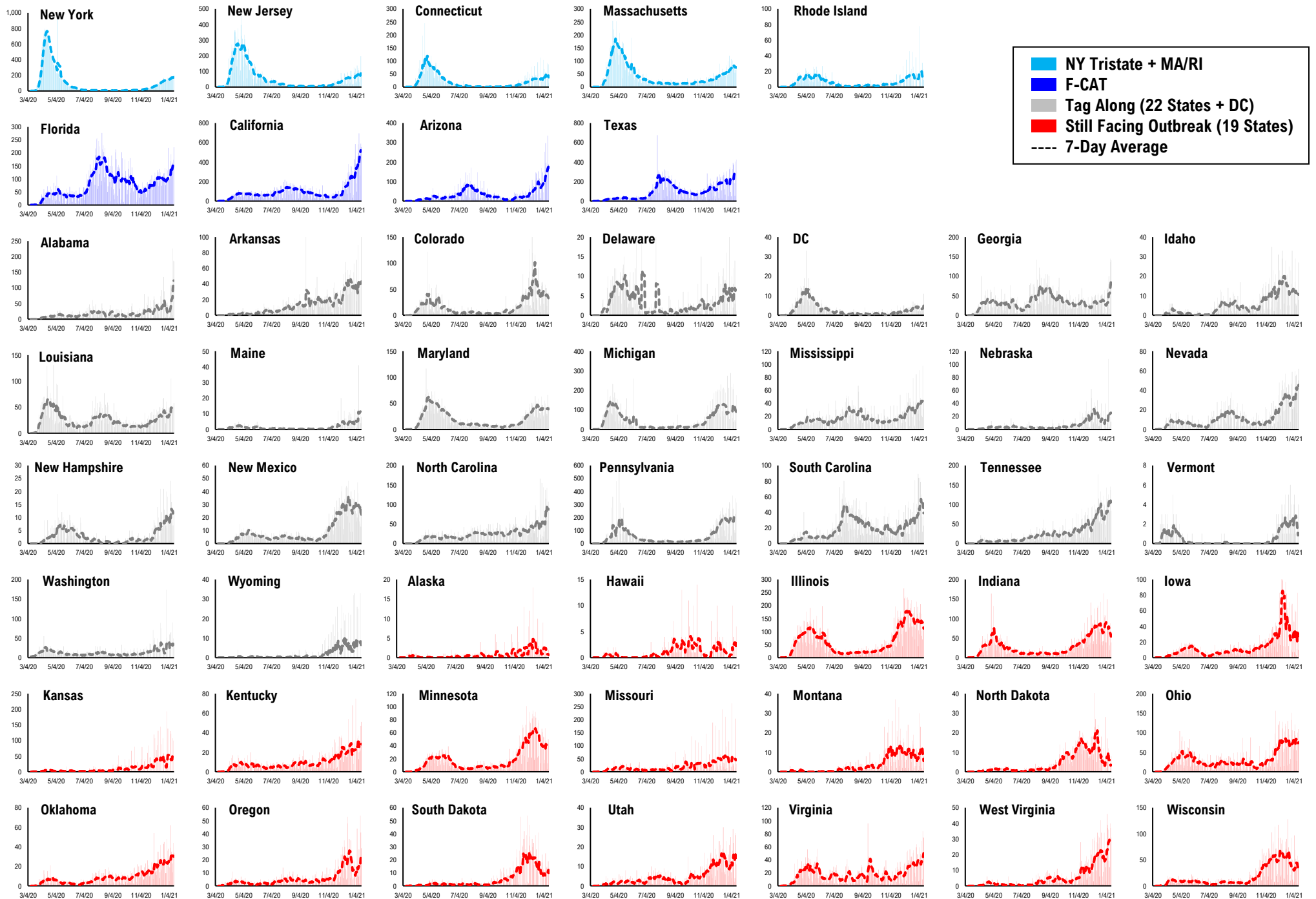
# #11: Daily New Cases by States...



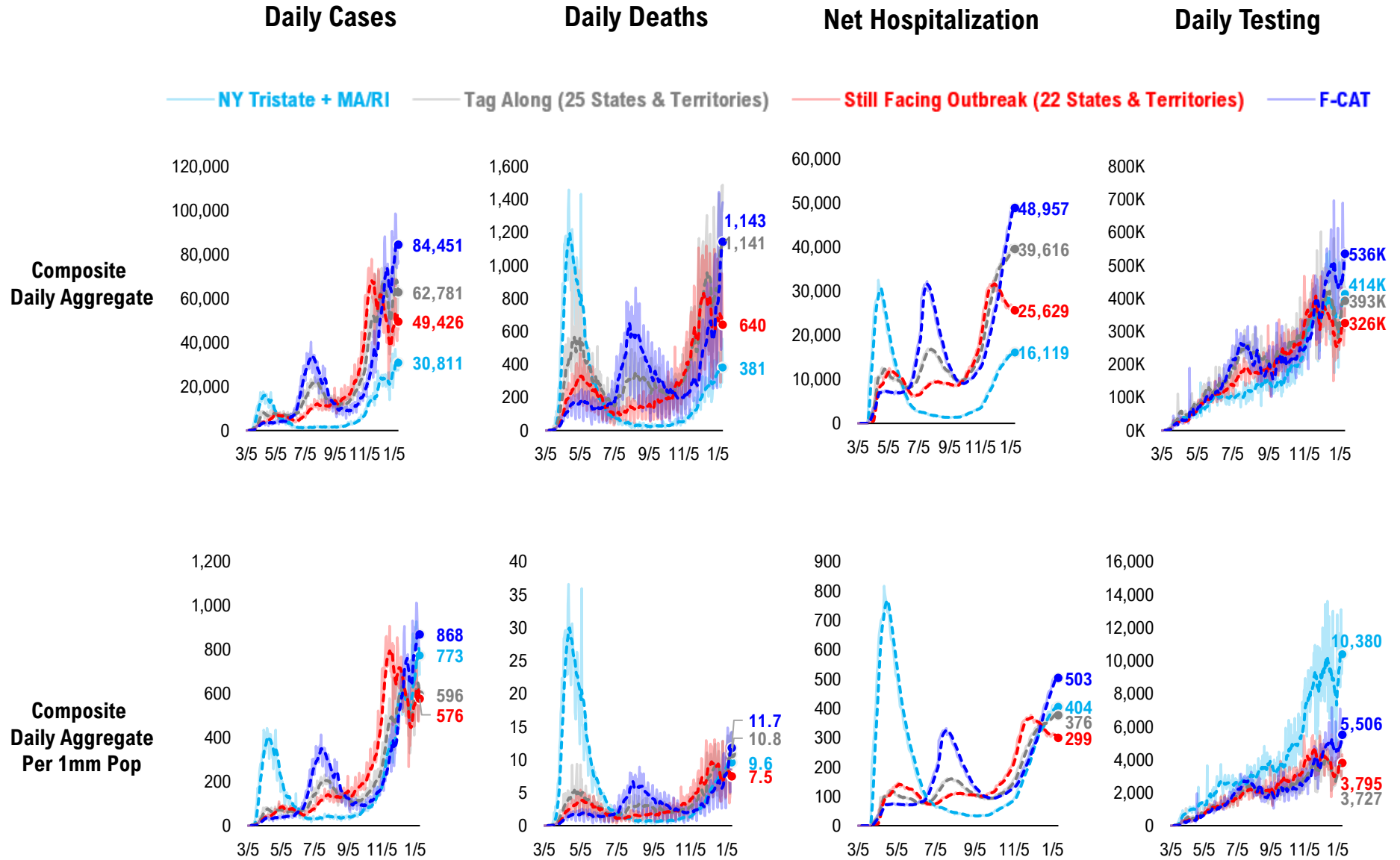
# #12: Current Hospitalizations by States...



# #13: Daily New Deaths by States...

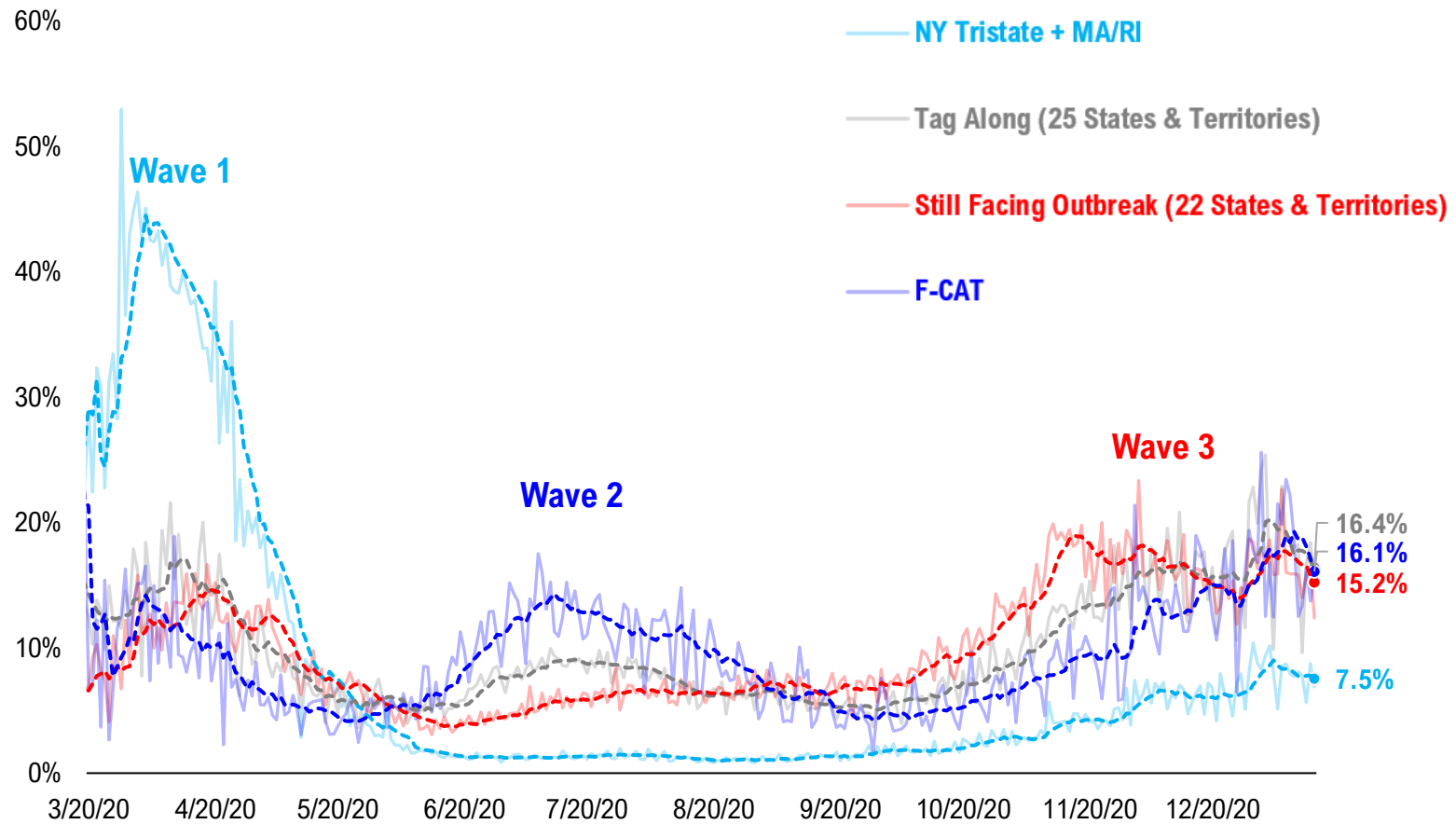


# #14: State COVID-19 situation by Tier...



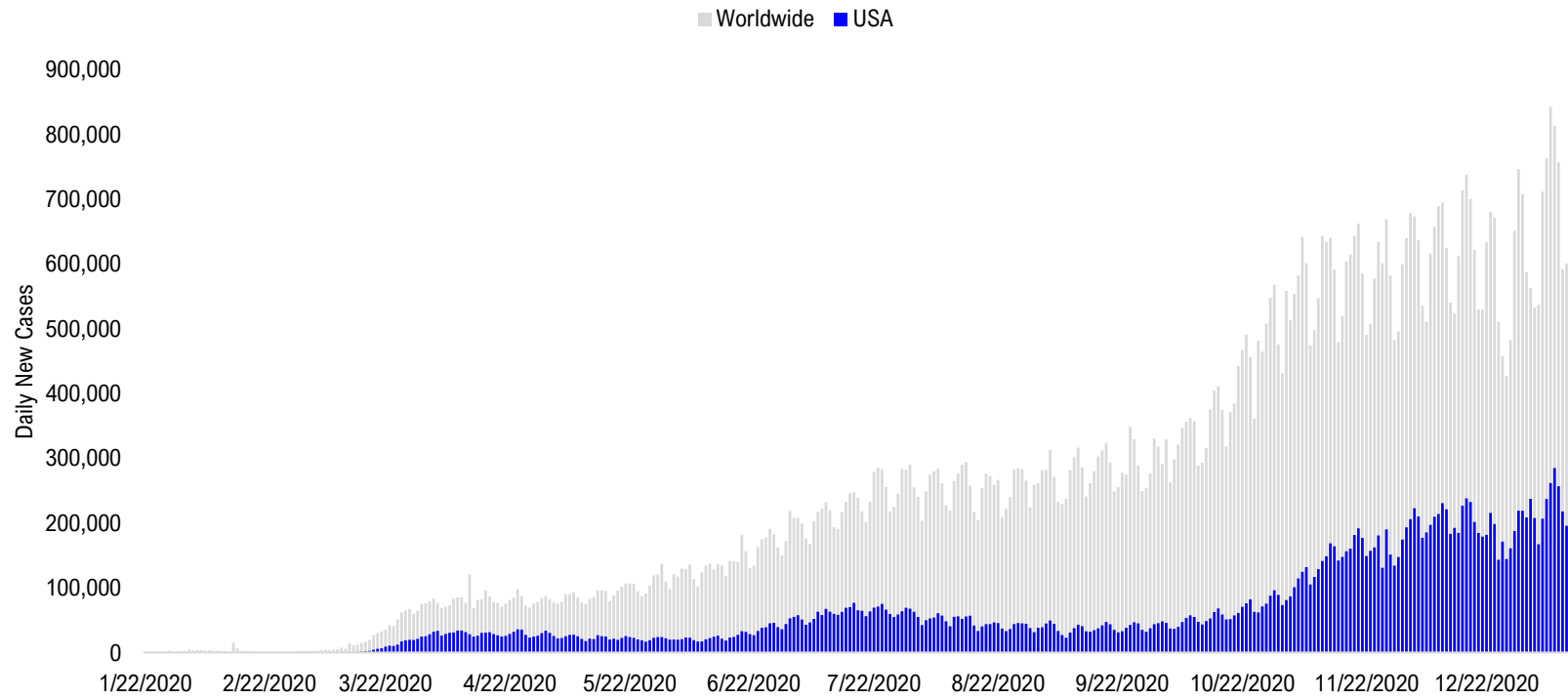
# #15: State COVID-19 Daily Positivity Rate by Tier...

## Composite Daily Positivity Rate





# #16: Global COVID-19 Situation at a Glance...



Aug 28	Sep 11	Sep 25	Oct 9	Oct 23	Nov 6	Nov 20	Dec 4	Dec 18	Jan 1	Jan 13
Latin America 88,255	Pakistan + India + Bangladesh 98,888	Pakistan + India + Bangladesh 88,225	Europe 112,289	Europe 223,797	Europe 312,557	Europe 279,289	Europe 258,860	Europe 282,804	Europe 275,210	Europe 249,460
Pakistan + India + Bangladesh 82,644	Latin America 80,841	Latin America 76,712	Pakistan + India + Bangladesh 76,149	US + Canada 71,893	US + Canada 116,877	US + Canada 182,603	US + Canada 213,691	US + Canada 239,069	US + Canada 221,011	US + Canada 212,331
US + Canada 45,273	Europe 47,339	Europe 67,906	Latin America 69,822	Latin America 69,390	Latin America 59,345	Latin America 68,233	Latin America 88,693	Latin America 108,000	Latin America 96,926	Latin America 111,821
Europe 35,993	US + Canada 37,795	US + Canada 43,790	US + Canada 54,955	Pakistan + India + Bangladesh 56,907	Pakistan + India + Bangladesh 52,404	Pakistan + India + Bangladesh 50,856	Pakistan + India + Bangladesh 41,815	Pakistan + India + Bangladesh 28,277	Africa 29,062	Africa 29,972
Asia ex- India+Pakistan 10,223	Asia ex- India+Pakistan 10,997	Asia ex- India+Pakistan 11,003	Asia ex- India+Pakistan 13,934	Asia ex- India+Pakistan 15,237	Africa 13,656	Asia ex- India+Pakistan 15,310	Asia ex- India+Pakistan 17,499	Africa 20,166	Asia ex- India+Pakistan 19,749	Asia ex- India+Pakistan 23,327
Africa 8,468	Africa 8,309	Africa 8,247	Africa 9,966	Africa 10,615	Asia ex- India+Pakistan 13,638	Africa 14,917	Africa 16,543	Asia ex- India+Pakistan 17,898	Pakistan + India + Bangladesh 17,406	Pakistan + India + Bangladesh 18,528

# Disclosures

This research is for the clients of FS Insight only. For important disclosures and rating histories regarding sectors or companies that are the subject of this report, please contact your sales representative or FS Insight at 150 East 52nd Street, New York, NY, 10022 USA.

## **Analyst Certification (Reg AC)**

Thomas J. Lee, the research analyst denoted by an “AC” on the cover of this report, hereby certifies that all of the views expressed in this report accurately reflect his personal views, which have not been influenced by considerations of the firm’s business or client relationships.

Neither I, nor a member of my household is an officer, director, or advisory board member of the issuer(s) or has another significant affiliation with the issuer(s) that is/are the subject of this research report. There is a possibility that we will from time to time have long or short positions in, and buy or sell, the securities or derivatives, if any, referred to in this research

## **Conflicts of Interest**

This research contains the views, opinions and recommendations of FS Insight . As of the time of writing and publication of this presentation, FS Insight does not know of, or have reason to know of any material conflicts of interest at the time of the publication of this presentation. The Company has no contractual relationship, nor have we received any compensation from any of the companies listed in this research report.

## **Analyst Industry/Sector Views**

Positive (+): The analyst expects the performance of his industry/sector coverage universe over the next 6-18 months to be attractive vs. the relevant broad market benchmark, being the S&P 500 for North America.

Neutral (N): The analyst expects the performance of his or her industry/sector coverage universe over the next 6-18 months to be in line with the relevant broad market benchmark, being the S&P 500 for North America.

Negative (-): The analyst expects his or her industry coverage universe over the next 6-18 months to underperform vs. the relevant broad market benchmark, being the S&P 500 for North America.

## **General Disclosures**

FS Insight is an independent research company and is not a registered investment advisor and is not acting as a broker dealer under any federal or state securities laws. FS Insight is a member of IRC Securities’ Research Prime Services Platform. IRC Securities is a FINRA registered broker-dealer that is focused on supporting the independent research industry. Certain personnel of FS Insight (i.e. Research Analysts) are registered representatives of IRC Securities, a FINRA member firm registered as a broker-dealer with the Securities and Exchange Commission and certain state securities regulators. As registered representatives and independent contractors of IRC Securities, such personnel may receive commissions paid to or shared with IRC Securities for transactions placed by FS Insight clients directly with IRC Securities or with securities firms that may share commissions with IRC Securities in accordance with applicable SEC and FINRA requirements. IRC Securities does not distribute the research of FS Insight , which is available to select institutional clients that have engaged FS Insight .

As registered representatives of IRC Securities our analysts must follow IRC Securities’ Written Supervisory Procedures. Notable compliance policies include (1) prohibition of insider trading or the facilitation thereof, (2) maintaining client confidentiality, (3) archival of electronic communications, and (4) appropriate use of electronic communications, amongst other compliance related policies.

FS Insight does not have the same conflicts that traditional sell-side research organizations have because FS Insight (1) does not conduct any investment banking activities, (2) does not manage any investment funds, and (3) our clients are only institutional investors.

This research is for the clients of FS Insight only. Additional information is available upon request. Information has been obtained from sources believed to be reliable but FS Insight does not warrant its completeness or accuracy except with respect to any disclosures relative to FS Insight and the analyst’s involvement (if any) with any of the subject companies of the research. All pricing is as of the market close for the securities discussed, unless otherwise stated. Opinions and estimates constitute our judgment as of the date of this material and are subject to change without notice. Past performance is not indicative of future results. This material is not intended as an offer or solicitation for the purchase or sale of any financial instrument. The opinions and recommendations herein do not take into account individual client circumstances, risk tolerance, objectives, or needs and are not intended as recommendations of particular securities, financial instruments or strategies. The recipient of this report must make its own independent decision regarding any securities or financial instruments mentioned herein. Except in circumstances where FS Insight expressly agrees otherwise in writing, FS Insight is not acting as a municipal advisor and the opinions or views contained herein are not intended to be, and do not constitute, advice, including within the meaning of Section 15B of the Securities Exchange Act of 1934. All research reports are disseminated and available to all clients simultaneously through electronic publication to our internal client website, FS Insight .com. Not all research content is redistributed to our clients or made available to third-party aggregators or the media. Please contact your sales representative if you would like to receive any of our research publications.

**Copyright 2020 FS Insight LLC. All rights reserved. No part of this material may be reprinted, sold or redistributed without the prior written consent of FS Insight LLC.**