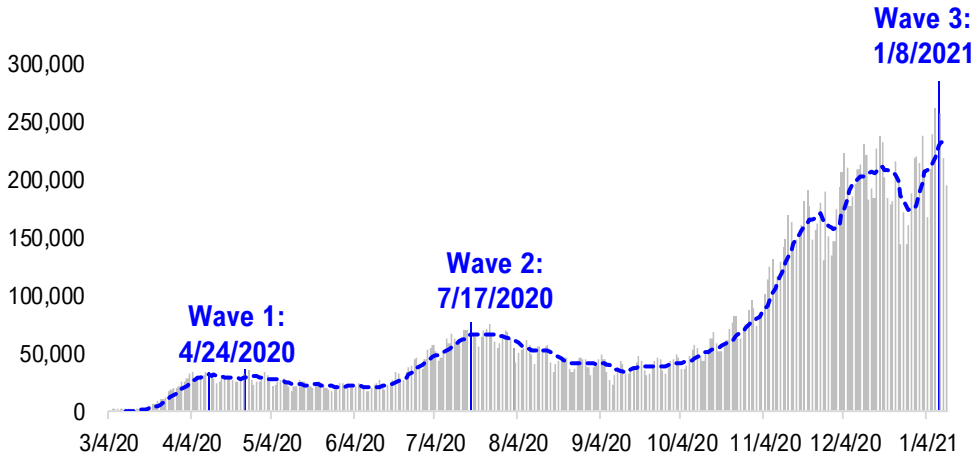


# FSInsight Daily COVID-19 Chartbook

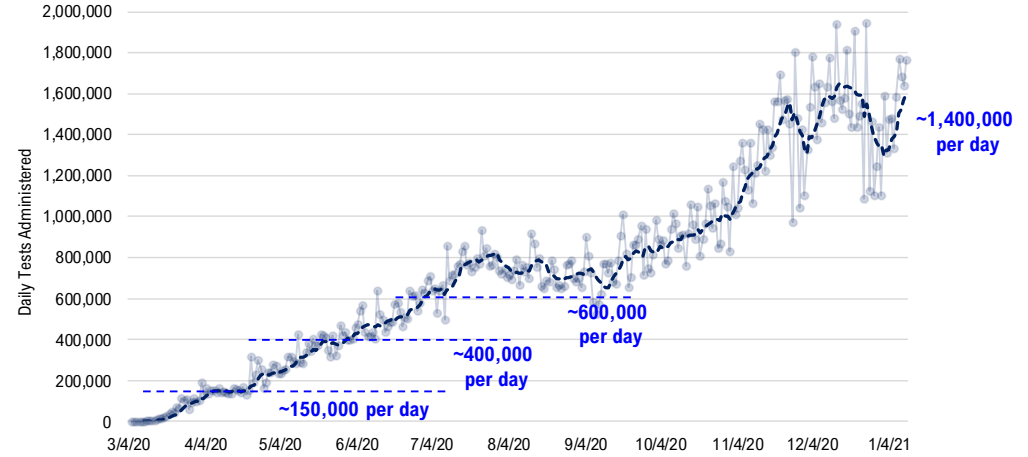


# #1: USA COVID-19 Situation at a Glance...

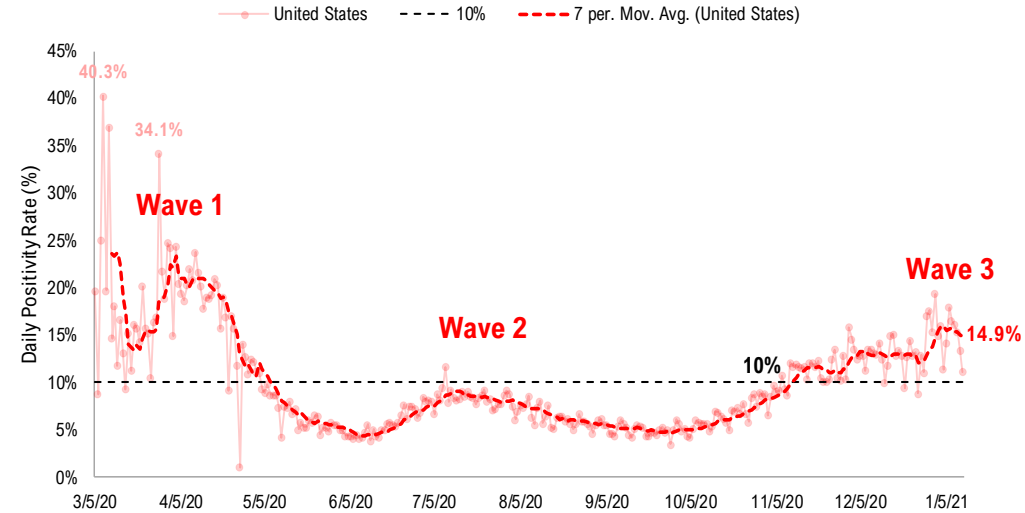
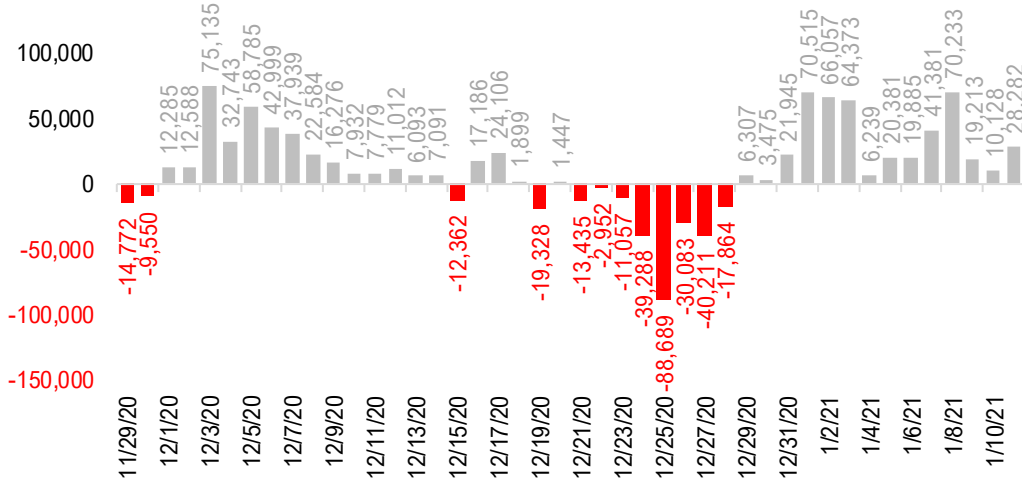
**US daily new cases**



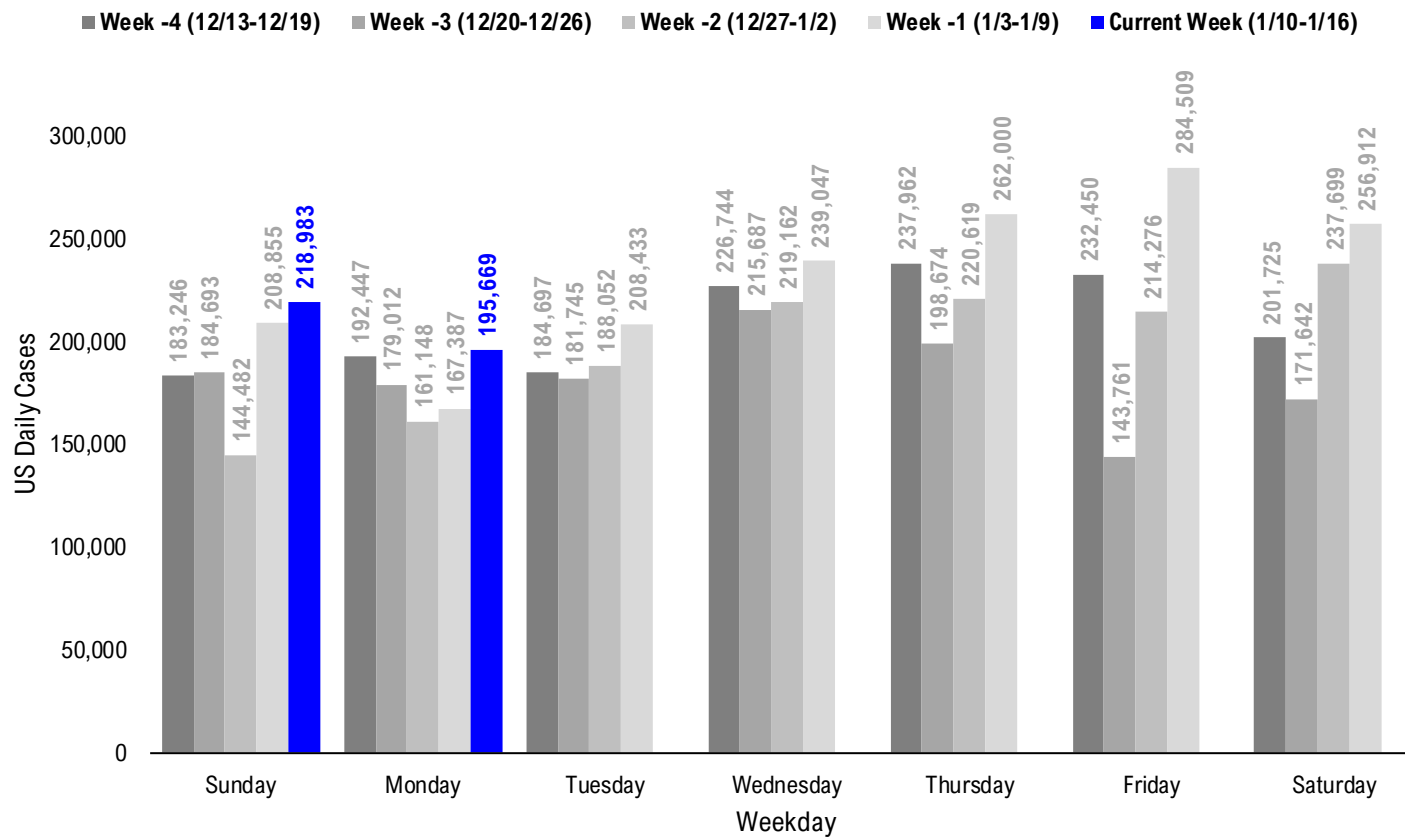
**USA total COVID-19 tests administered**



**US daily new cases rolling 7D delta**



# #2: USA COVID-19 Daily Cases Weekday Seasonality (Past 4 Weeks) ...



# #3: USA State COVID-19 Situation at a Glance...

	Sorted Daily Cases		Daily Cases (3D avg) per 1mm residents				Since Peak		Hospitalization	
	% US Pop	% US GDP	1/11	7D Delta	1/11	7D Delta	# Days	% Decline in Daily Cases	7D Net Hospitalization	7D Net Hospitalization / 7D New Cases
	United States	100%	100%	195.669	+28.282	682	+59	2	-16%	1.538

	Sorted Daily Cases		Daily Cases (3D avg) per 1mm residents				Since Peak		Hospitalization	
	% US Pop	% US GDP	1/11	7D Delta	1/11	7D Delta	# Days	% Decline in Daily Cases	7D Net Hospitalization	7D Net Hospitalization / 7D New Cases
	United States	100%	100%	195.669	+28.282	682	+59	2	-16%	1.538

**States:**

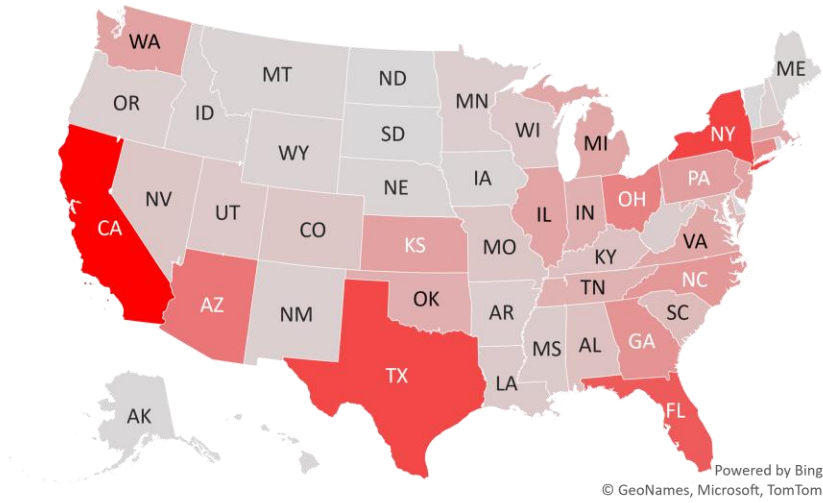
1 California	11.9%	14.6%	39,839	+10,206	1199	+117	1	-7%	630	0.2%
2 New York	5.9%	8.1%	13,714	+2,505	788	+143	2	-14%	394	0.4%
3 Texas	8.7%	8.8%	13,308	-2,668	519	+122	4	-31%	436	0.3%
4 Florida	6.5%	5.0%	11,576	+320	610	+108	3	-31%	412	0.4%
5 Arizona	2.2%	1.7%	8,995	+3,837	1433	+1	8	-14%	350	0.5%
6 Ohio	3.5%	3.3%	7,892	+1,950	637	-134	32	-35%	-349	(0.6%)
7 Connecticut	1.1%	1.3%	7,364	+2,848	688	-146	33	-43%	31	0.2%
8 Georgia	3.2%	2.9%	6,339	+2,309	705	+212	1	-15%	550	1.1%
9 North Carolina	3.2%	2.7%	5,936	+749	837	+169	2	-18%	208	0.4%
10 Pennsylvania	3.9%	3.8%	5,338	+2,112	596	+152	37	-37%	-398	(0.7%)
11 Kansas	0.9%	0.8%	5,180	+1,608	593	+184	47	-61%	-72	(0.4%)
12 Washington	2.3%	2.7%	4,952	+3,957	344	-59	47	-38%	39	0.2%
13 New Jersey	2.7%	3.0%	4,905	+2,630	614	+184	2	-11%	20	0.1%
14 Illinois	3.8%	4.2%	4,776	-283	426	+50	59	-60%	-408	(0.8%)
15 Michigan	3.0%	2.6%	4,536	-456	242	-225	54	-72%	-302	(1.4%)
16 Virginia	2.6%	2.6%	4,530	+759	604	+105	2	-6%	352	1.0%
17 Massachusetts	2.1%	2.8%	4,251	-655	838	-3	2	-25%	-128	(0.3%)
18 Oklahoma	1.2%	1.0%	3,885	+1,186	1235	-99	1	-8%	16	0.1%
19 Indiana	2.0%	1.8%	3,685	+68	730	+140	37	-39%	-299	(0.8%)
20 Tennessee	2.1%	1.8%	3,527	-426	820	+6	24	-45%	-158	(0.3%)
21 Maryland	1.8%	2.0%	3,012	+529	556	+138	1	-7%	206	0.9%
22 South Carolina	1.6%	1.1%	2,679	-1,077	732	-114	2	-25%	232	0.8%
23 Alabama	1.5%	1.1%	2,100	-61	660	+93	4	-36%	24	0.1%
24 Kentucky	1.3%	1.0%	2,082	-235	712	-324	3	-38%	-28	(0.1%)
25 Nevada	0.9%	0.8%	1,681	+267	713	+65	2	-26%	-102	(0.6%)
26 Colorado	1.7%	1.8%	1,677	-508	389	+26	51	-63%	-101	(0.5%)
27 Missouri	1.8%	1.5%	1,659	+463	447	+140	58	-45%	160	0.7%
28 Utah	1.0%	0.9%	1,484	-676	663	+49	3	-48%	44	0.2%

**States:**

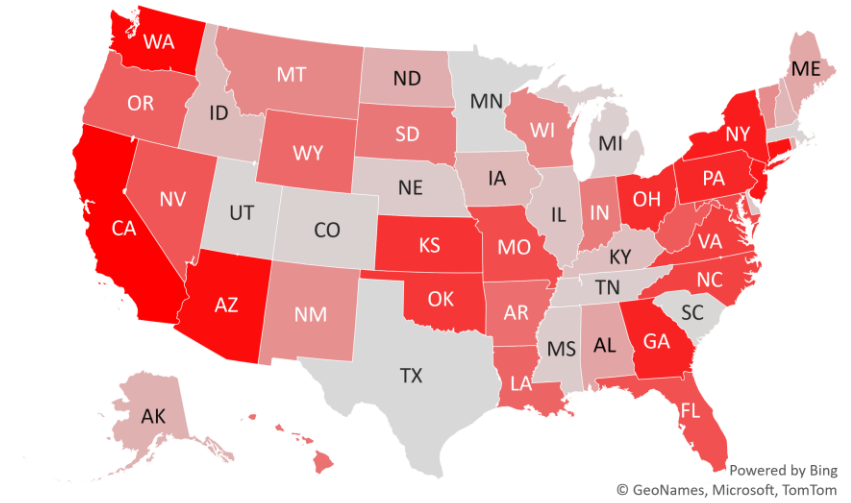
29 Wisconsin	1.8%	1.6%	1,456	+49	363	+80	59	-72%	-96	(0.5%)
30 Louisiana	1.4%	1.3%	1,402	+212	489	-11	4	-57%	91	0.3%
31 Mississippi	0.9%	0.6%	1,227	-389	744	+152	2	-23%	-8	(0.0%)
32 West Virginia	0.5%	0.4%	1,070	+242	815	+59	8	-23%	-44	(0.4%)
33 Arkansas	0.9%	0.6%	1,029	+183	667	+215	1	-16%	75	0.5%
34 Minnesota	1.7%	1.8%	980	-2,164	331	-164	42	-76%	-124	(0.9%)
35 New Mexico	0.6%	0.5%	930	+9	577	+73	52	-62%	1	0.0%
36 Oregon	1.3%	1.2%	924	+216	297	-62	36	-28%	-71	(0.9%)
37 New Hampshire	0.4%	0.4%	707	-171	528	-281	7	-35%	-52	(1.0%)
38 Idaho	0.5%	0.4%	572	-226	370	-46	32	-68%	23	0.3%
39 Rhode Island	0.3%	0.3%	568	-65	942	+217	37	-39%	-16	(0.2%)
40 Wyoming	0.2%	0.2%	563	+191	431	-52	53	-75%	-16	(0.7%)
41 Delaware	0.3%	0.4%	554	-295	796	+19	2	-15%	39	0.7%
42 Iowa	1.0%	0.9%	476	-225	263	+47	59	-79%	-16	(0.2%)
43 Nebraska	0.6%	0.6%	406	-332	420	+40	53	-71%	-36	(0.5%)
44 Montana	0.3%	0.2%	329	+46	338	-7	57	-74%	16	0.4%
45 Maine	0.4%	0.3%	313	-63	299	-140	18	-38%	10	0.3%
46 Puerto Rico	1.0%	0.5%	297	-261	125	-45	23	-65%	-29	(0.7%)
47 District of Columbia	0.2%	0.7%	202	+62	418	+111	1	-15%	47	2.2%
48 South Dakota	0.3%	0.3%	181	+70	346	-211	58	-83%	-26	(0.9%)
49 Alaska	0.2%	0.3%	173	-87	334	-281	37	-70%	-18	(0.9%)
50 Hawaii	0.4%	0.5%	172	+83	145	+50	135	-30%	40	2.7%
51 North Dakota	0.2%	0.3%	114	-85	171	-154	58	-93%	-24	(1.5%)
52 Vermont	0.2%	0.2%	111	+31	245	-1	2	-27%	12	1.0%
53 Guam	0.0%	0.0%	11	-6	48	+12	62	-96%	1	1.3%
54 U.S. Virgin Islands	0.0%	0.0%	0	-1	0	-19	143	-100%	0	0.0%
55 Northern Mariana	0.0%	0.0%	0	+0	0	+0	76	-100%	0	0.0%
56 American Samoa	0.0%	0.0%	0	+0	0	+0	0	0%	0	0.0%

# #4: USA COVID-19 Heat Map...

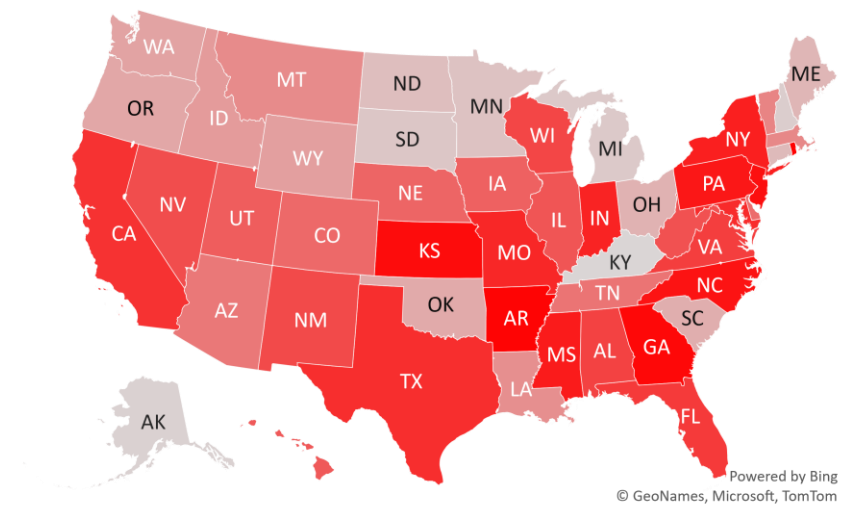
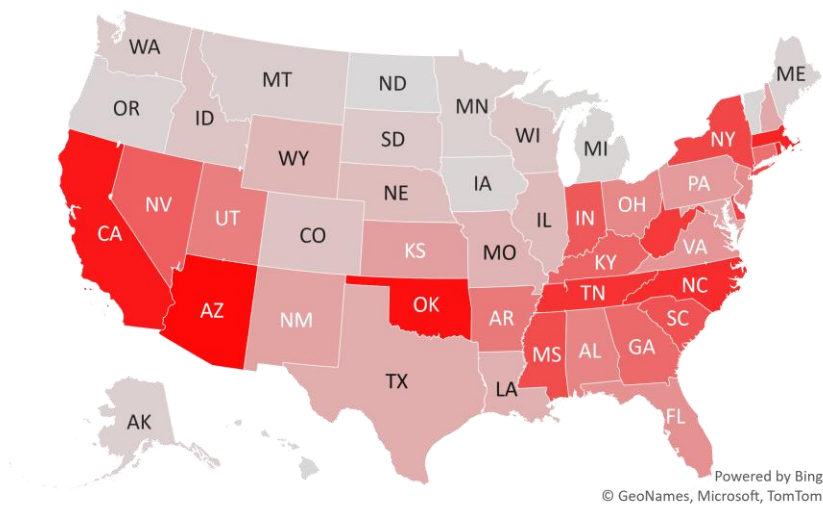
### Daily Case Increases



### 7D Delta in Daily New Cases



### Daily Case Increases per 1mm Resident (3D Avg)





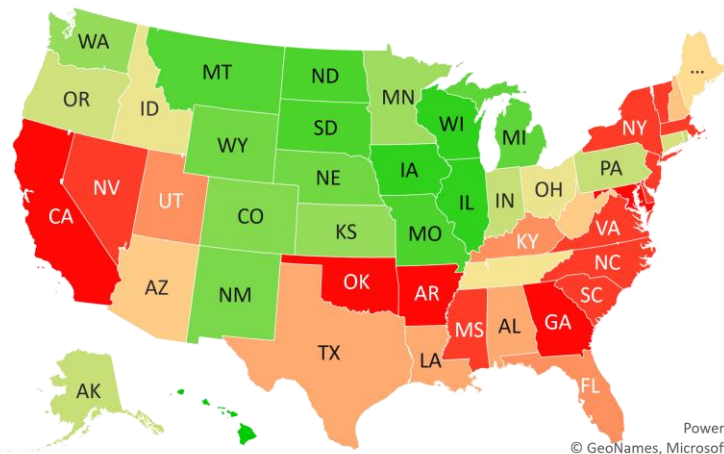
# #5: # of Days since Daily Case Peaked by States...

## # Days since Daily Cases (3D Avg) Peak (as of 1/11)

	Sorted			
	Peak Date	1/11/21	% off the Peak	% US Pop
United States	1/9/21	2	-16%	100%
<b>States:</b>				
U.S. Virgin Islands	8/21/20	143	-100%	0.0%
Hawaii	8/29/20	135	-30%	0.4%
Northern Mariana Island	10/27/20	76	-100%	0.0%
Guam	11/10/20	62	-96%	0.0%
Wisconsin	11/13/20	59	-72%	1.8%
Illinois	11/13/20	59	-60%	3.8%
Iowa	11/13/20	59	-79%	1.0%
South Dakota	11/14/20	58	-83%	0.3%
North Dakota	11/14/20	58	-93%	0.2%
Missouri	11/14/20	58	-45%	1.8%
Montana	11/15/20	57	-74%	0.3%
Michigan	11/18/20	54	-72%	3.0%
Wyoming	11/19/20	53	-75%	0.2%
Nebraska	11/19/20	53	-71%	0.6%
New Mexico	11/20/20	52	-62%	0.6%
Colorado	11/21/20	51	-63%	1.7%
Washington	11/25/20	47	-38%	2.3%
Kansas	11/25/20	47	-61%	0.9%
Minnesota	11/30/20	42	-76%	1.7%
Rhode Island	12/5/20	37	-39%	0.3%
Pennsylvania	12/5/20	37	-37%	3.9%
Indiana	12/5/20	37	-39%	2.0%
Alaska	12/5/20	37	-70%	0.2%
Oregon	12/6/20	36	-28%	1.3%
Connecticut	12/9/20	33	-43%	1.1%
Ohio	12/10/20	32	-35%	3.5%
Idaho	12/10/20	32	-68%	0.5%
Tennessee	12/18/20	24	-45%	2.1%

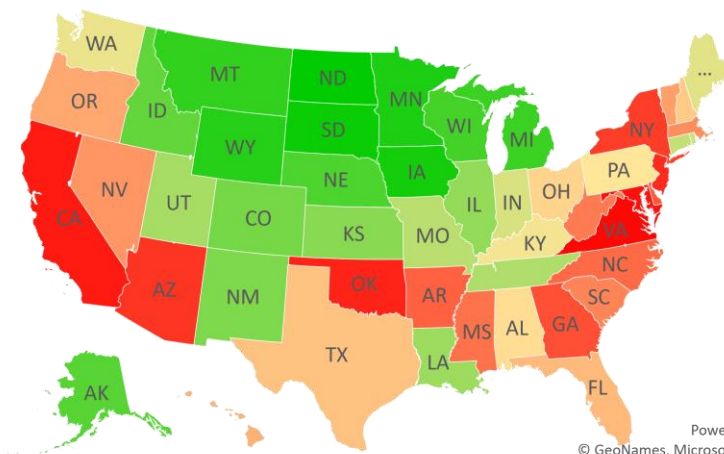
	Sorted			
	Peak Date	1/11/21	% off the Peak	% US Pop
United States	1/9/21	2	-16%	100%
<b>States:</b>				
Puerto Rico	12/19/20	23	-65%	1.0%
Maine	12/24/20	18	-38%	0.4%
West Virginia	1/3/21	8	-23%	0.5%
Arizona	1/3/21	8	-14%	2.2%
New Hampshire	1/4/21	7	-35%	0.4%
Texas	1/7/21	4	-31%	8.7%
Louisiana	1/7/21	4	-57%	1.4%
Alabama	1/7/21	4	-36%	1.5%
Utah	1/8/21	3	-48%	1.0%
Kentucky	1/8/21	3	-38%	1.3%
Florida	1/8/21	3	-31%	6.5%
Vermont	1/9/21	2	-27%	0.2%
Virginia	1/9/21	2	-6%	2.6%
South Carolina	1/9/21	2	-25%	1.6%
New York	1/9/21	2	-14%	5.9%
Nevada	1/9/21	2	-26%	0.9%
New Jersey	1/9/21	2	-11%	2.7%
North Carolina	1/9/21	2	-18%	3.2%
Mississippi	1/9/21	2	-23%	0.9%
Massachusetts	1/9/21	2	-25%	2.1%
Delaware	1/9/21	2	-15%	0.3%
Oklahoma	1/10/21	1	-8%	1.2%
Maryland	1/10/21	1	-7%	1.8%
Georgia	1/10/21	1	-15%	3.2%
District of Columbia	1/10/21	1	-15%	0.2%
California	1/10/21	1	-7%	11.9%
Arkansas	1/10/21	1	-16%	0.9%

## # Days since Daily Case Peak: **Longer = Good**



Powered by Bing  
© GeoNames, Microsoft, TomTom

## Daily Cases % off the Peak: **Larger Decline = Good**



Powered by Bing  
© GeoNames, Microsoft, TomTom

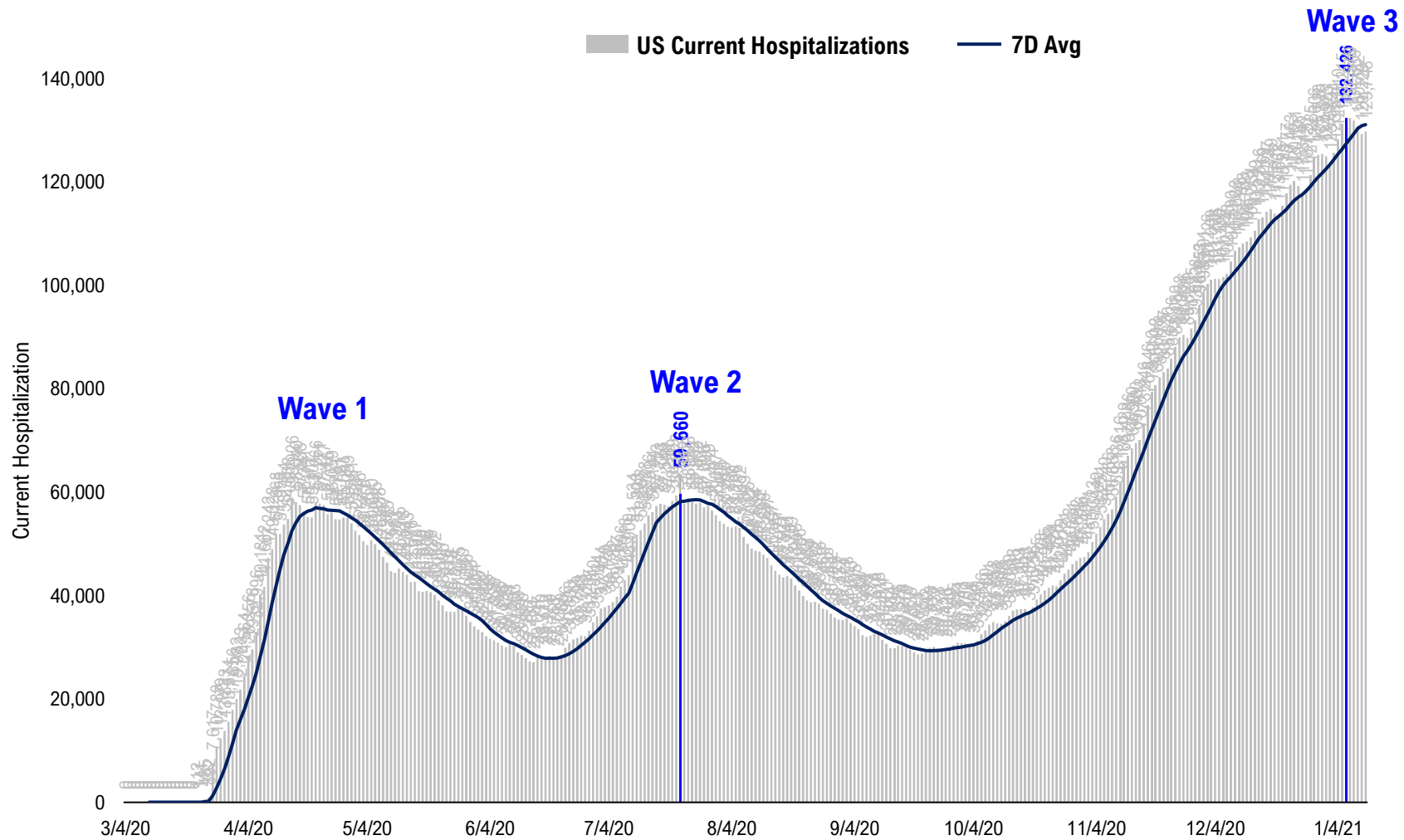
# #6: US New Cases by States... (sorted by today's new cases)

	Sorted				
	7D Ago	Last 3-day Trend			
	1/4/21	1/9/21	1/10/21	1/11/21	vs 7D ago
United States	167,387	256,912	218,983	195,669	+28,282
<b>States:</b>					
California	29,633	52,636	49,685	39,839	<--higher
New York	11,209	16,943	15,355	13,714	<--higher
Texas	15,976	18,861	12,954	13,308	
Florida	11,256	15,445	12,313	11,576	
Arizona	5,158	11,094	11,201	8,995	<--higher
Ohio	5,942	8,374	6,088	7,892	<--higher
Connecticut	4,516	0	0	7,364	<--higher
Georgia	4,030	8,957	7,169	6,339	<--higher
North Carolina	5,187	11,581	8,833	5,936	
Pennsylvania	3,226	10,045	7,506	5,338	<--higher
Kansas	3,572	0	0	5,180	<--higher
Washington	995	2,913	0	4,952	<--higher
New Jersey	2,275	6,427	5,019	4,905	<--higher
Illinois	5,059	6,717	4,711	4,776	
Michigan	4,992	2,706	0	4,536	
Virginia	3,771	5,798	5,141	4,530	<--higher
Massachusetts	4,906	7,414	5,656	4,251	
Oklahoma	2,699	4,289	6,487	3,885	<--higher
Indiana	3,617	5,966	5,093	3,685	
Tennessee	3,953	5,844	7,419	3,527	
Maryland	2,483	3,758	3,310	3,012	<--higher
South Carolina	3,756	4,803	3,819	2,679	
Alabama	2,161	4,863	2,750	2,100	
Kentucky	2,317	4,231	3,227	2,082	
Nevada	1,414	2,648	2,259	1,681	
Colorado	2,185	2,837	2,201	1,677	
Missouri	1,196	3,825	2,744	1,659	<--higher
Utah	2,160	2,613	2,276	1,484	

	Sorted				
	7D Ago	Last 3-day Trend			
	1/4/21	1/9/21	1/10/21	1/11/21	vs 7D ago
United States	167,387	256,912	218,983	195,669	+28,282
<b>States:</b>					
Wisconsin	1,407	3,046	1,832	1,456	
Louisiana	1,190	0	5,413	1,402	
Mississippi	1,616	3,203	2,214	1,227	
West Virginia	828	1,880	1,434	1,070	<--higher
Arkansas	846	2,151	2,856	1,029	<--higher
Minnesota	3,144	2,469	2,159	980	
New Mexico	921	1,498	1,203	930	
Oregon	708	1,629	1,207	924	<--higher
New Hampshire	878	719	729	707	
Idaho	798	977	432	572	
Rhode Island	633	1,387	1,038	568	
Wyoming	372	72	113	563	<--higher
Delaware	849	972	798	554	
Iowa	701	1,072	940	476	
Nebraska	738	1,023	1,006	406	
Montana	283	534	222	329	
Maine	376	612	279	313	
Puerto Rico	558	554	350	297	
District of Columbia	140	350	334	202	<--higher
South Dakota	111	321	417	181	<--higher
Alaska	260	311	250	173	
Hawaii	89	248	198	172	<--higher
North Dakota	199	120	158	114	
Vermont	80	171	177	111	<--higher
Guam	17	5	8	11	
U.S. Virgin Islands	1	0	0	0	
Northern Mariana Islands	0	0	0	0	
American Samoa	0	0	0	0	

# #7: US Daily Hospitalizations...

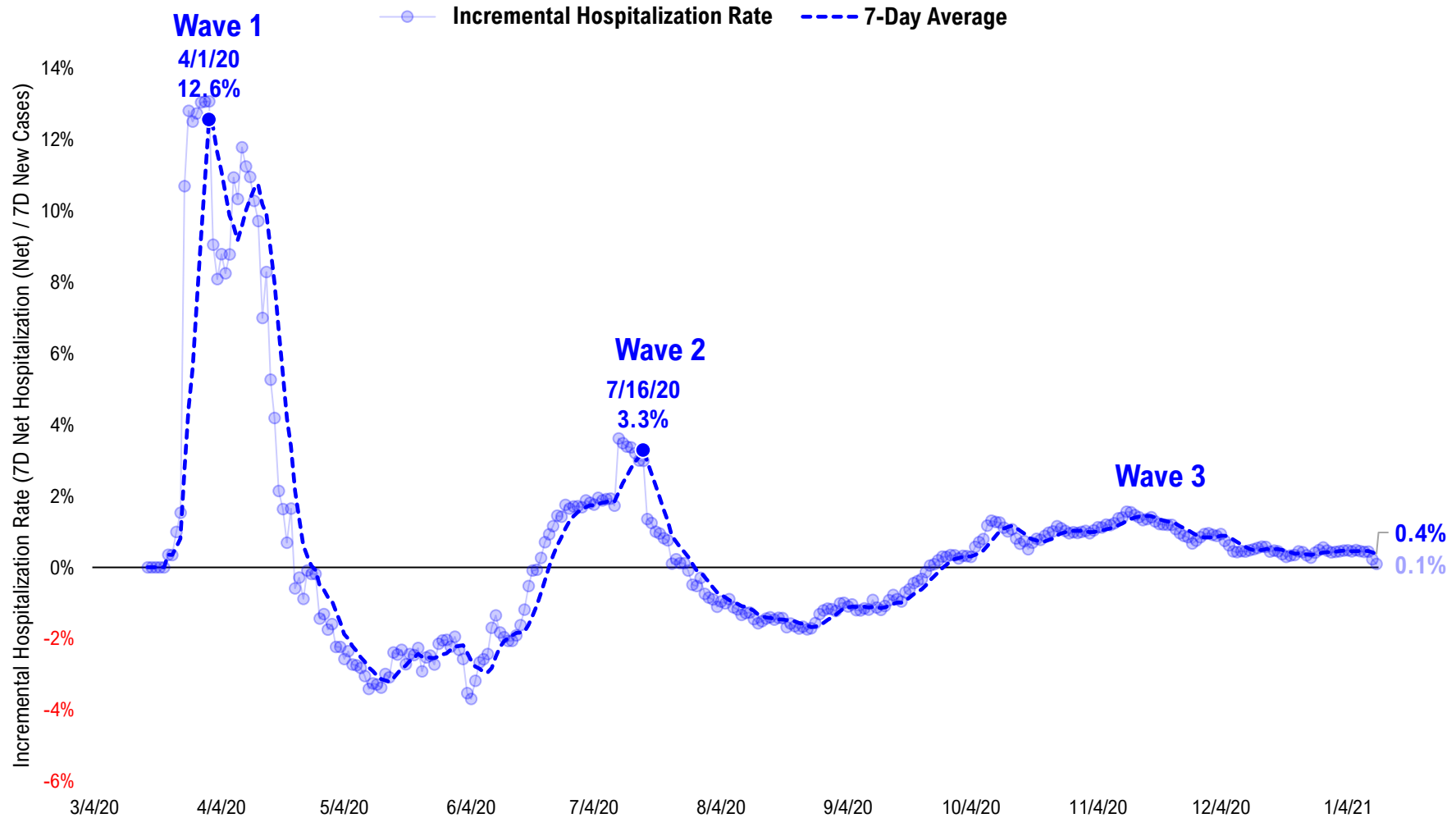
### US Net Hospitalizations (aggregate of 50 states + Washington, D.C.)





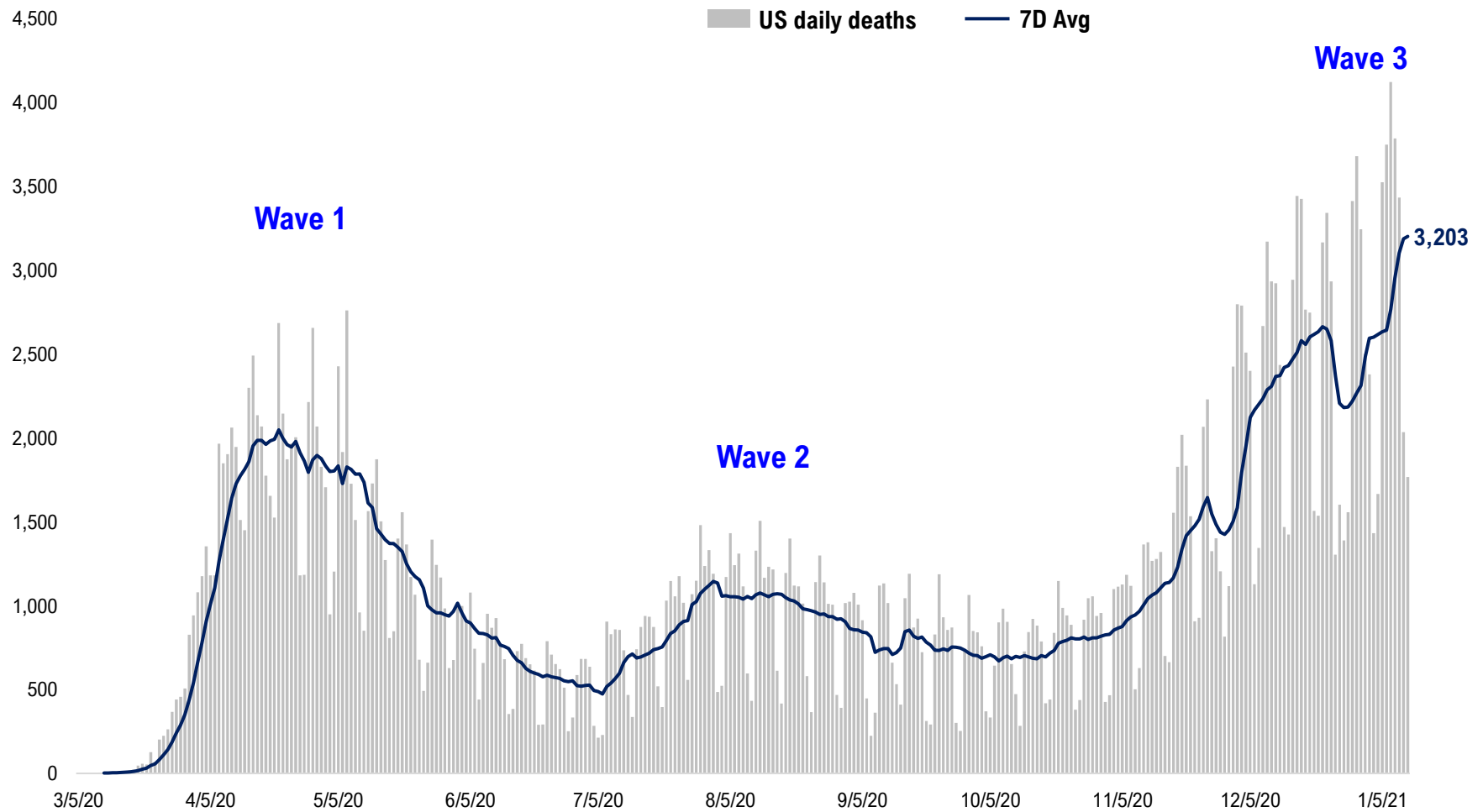
# #8: Incremental Hospitalization Rate...

Incremental Hospitalization Rate: 7D Net Hospitalizations / 7D Total New Cases  
(aggregate of 50 states + Washington, D.C.)



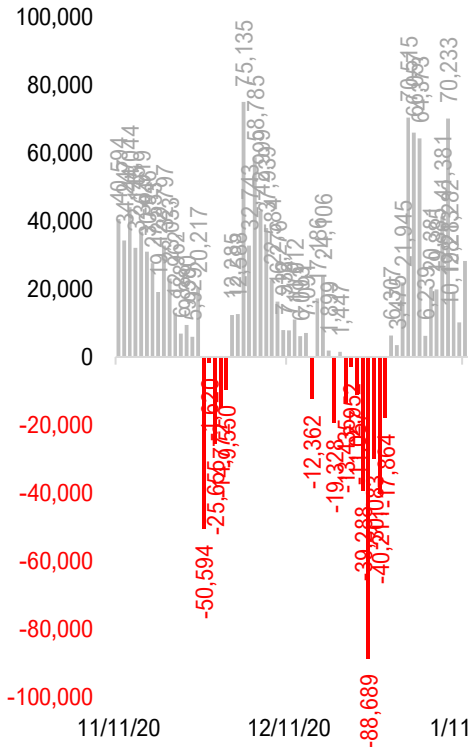
# #9: US Daily New Fatalities...

## US daily COVID-19 Fatalities

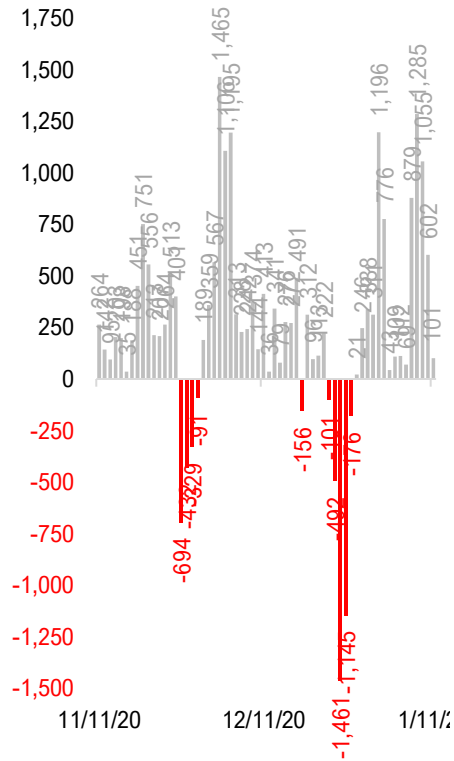


# #10: Rolling 7-Day Change in the Key Metrics... (Past 8 Weeks)

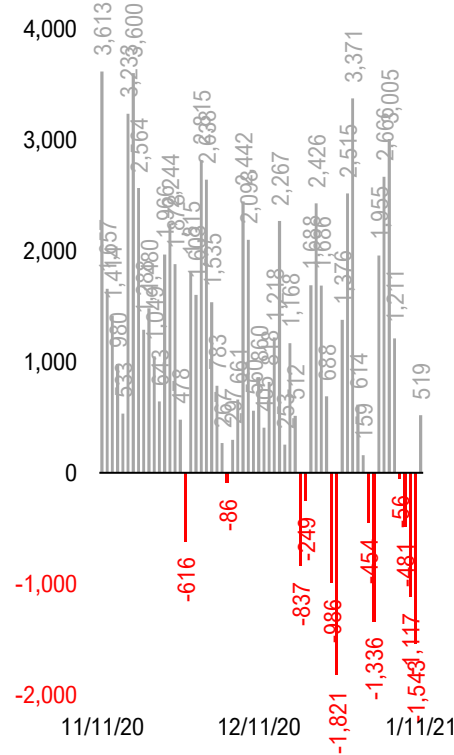
**Daily New Cases**  
(8/10-8/23 ex-CA; 9/4-9/5 ex-IL)



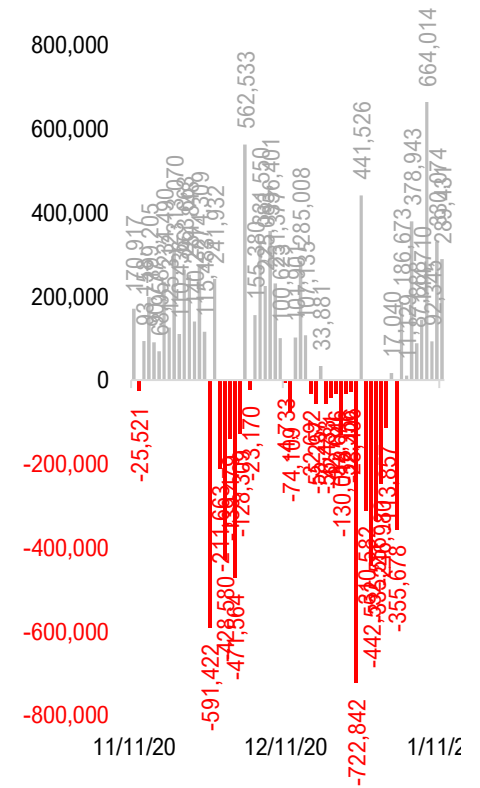
**Daily Deaths**



**Daily Net Hospitalization**  
(Red = more discharge than admission)

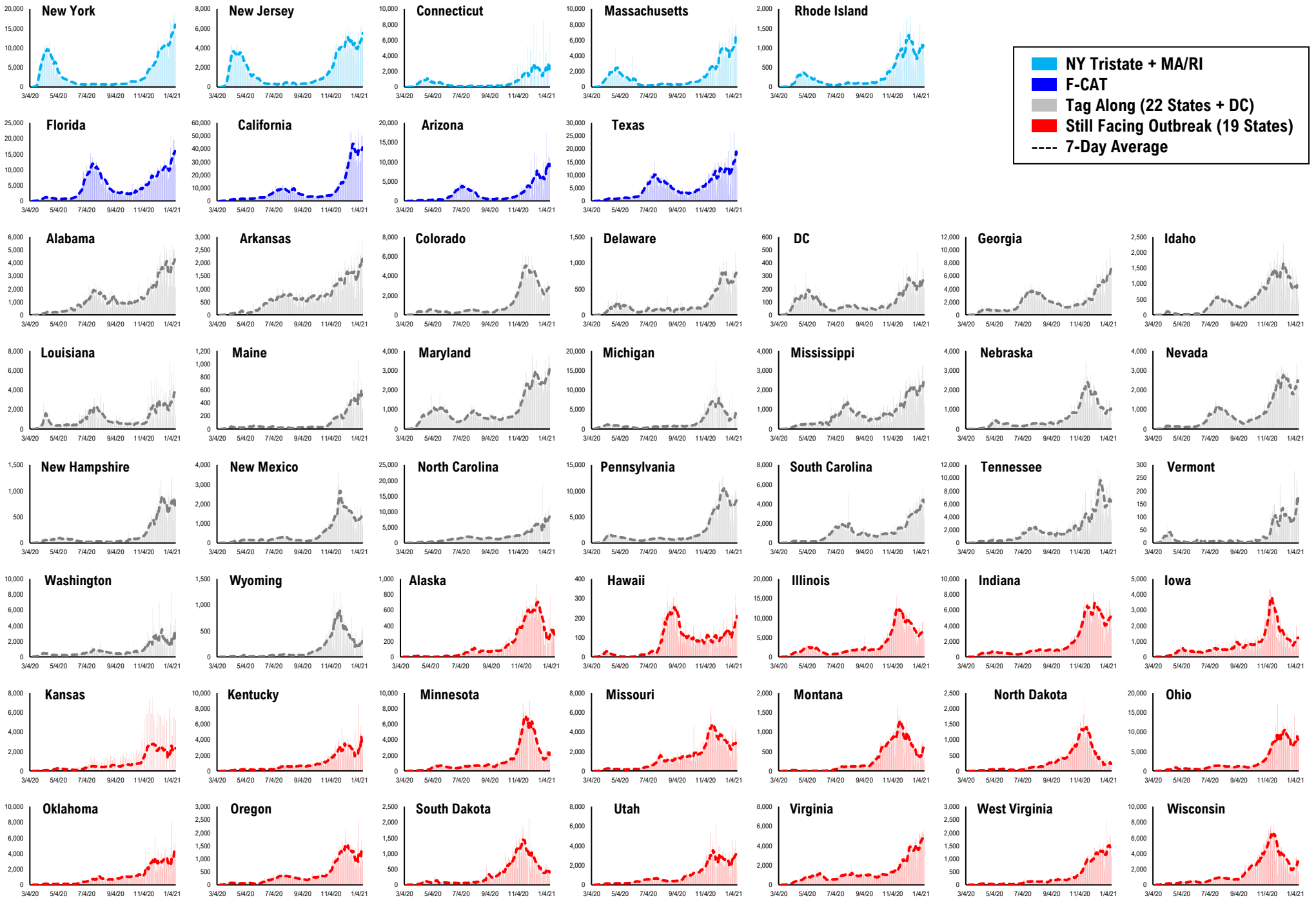


**Daily Tests**

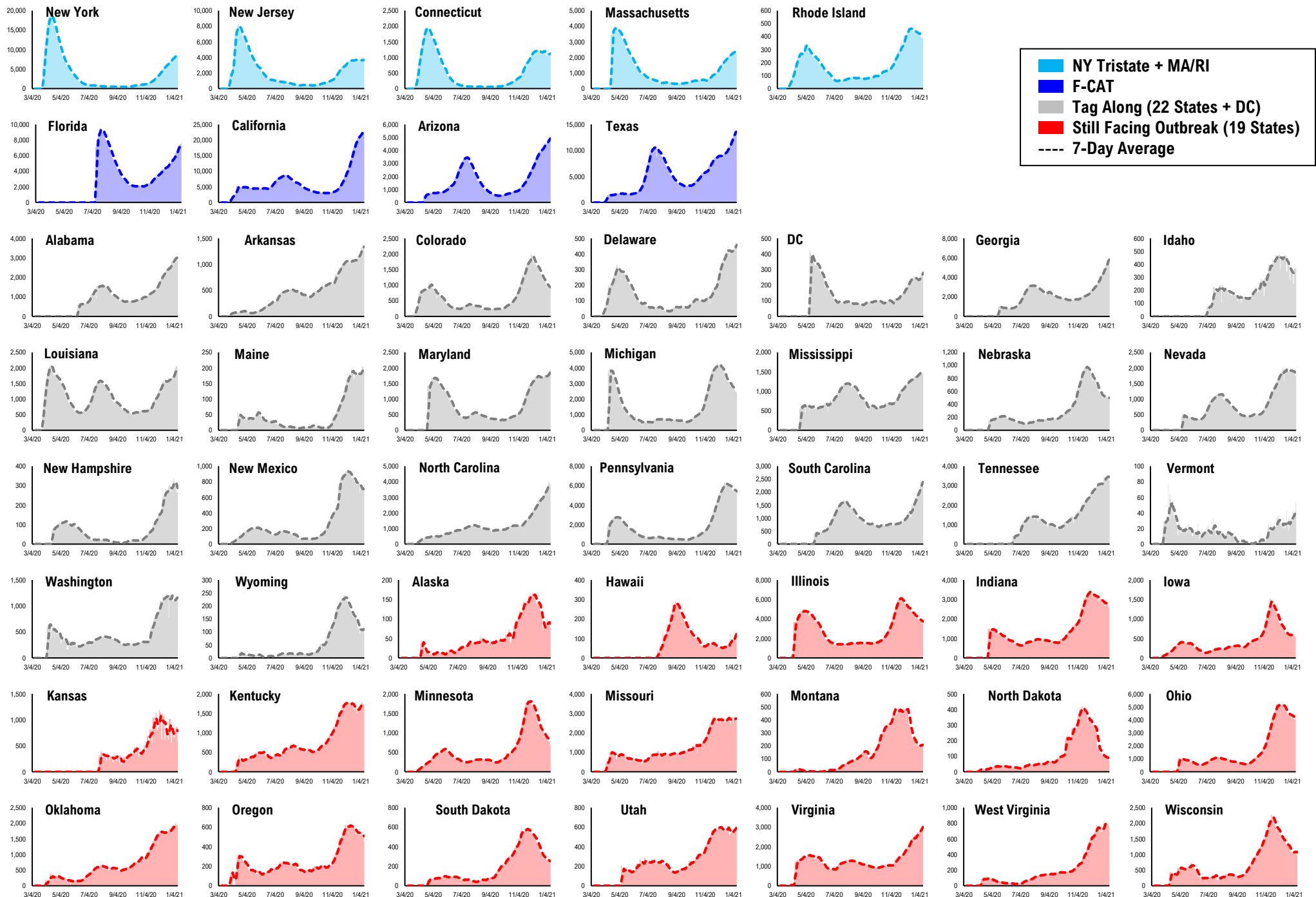


\* Ignored California between 8/10 and 8/23, due to its data glitch caused 300,000-case backlog  
Source: Fundstrat, COVID-19 Tracking Project, State Department of Health

# #11: Daily New Cases by States...

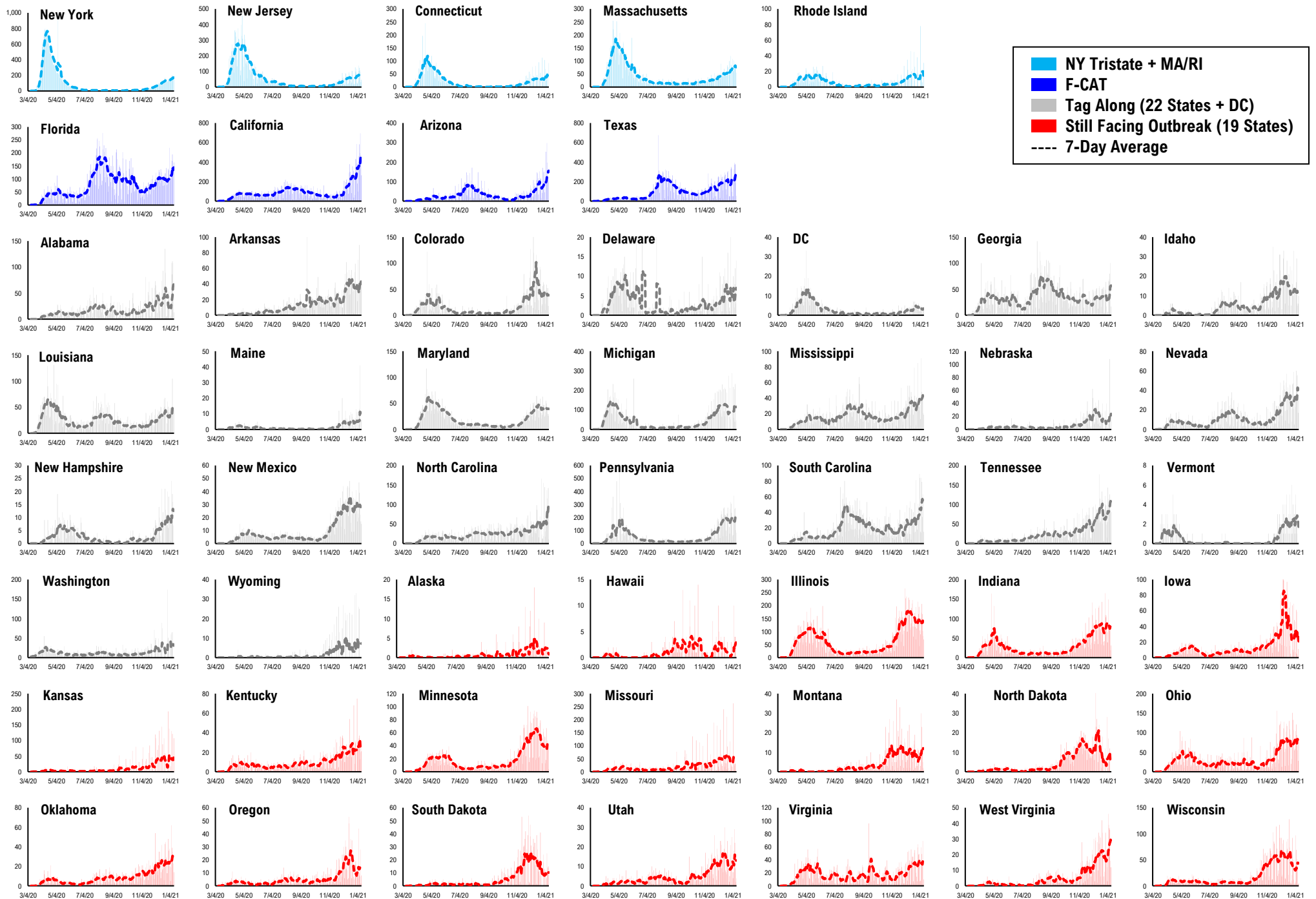


# #12: Current Hospitalizations by States...

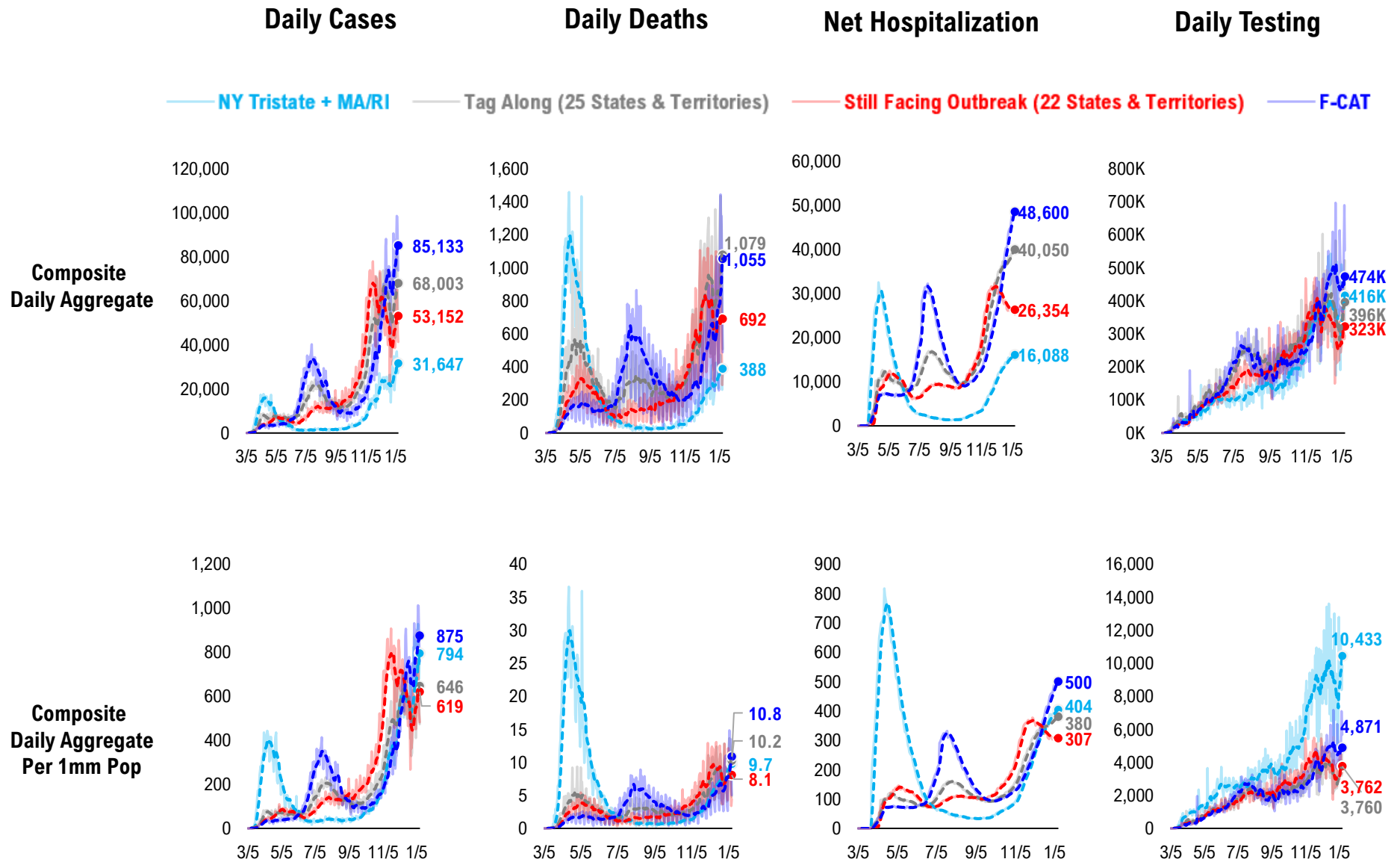




# #13: Daily New Deaths by States...

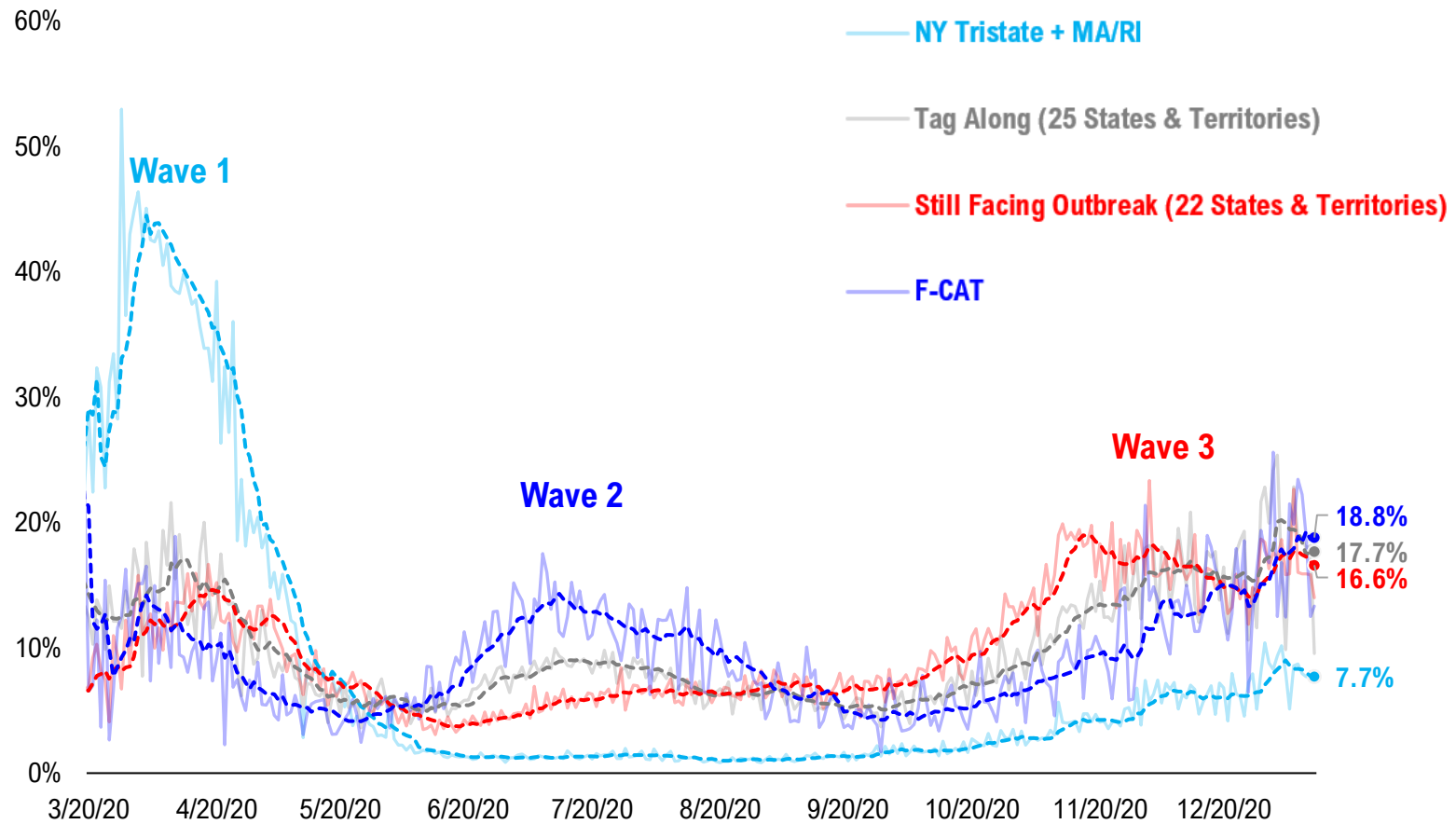


# #14: State COVID-19 situation by Tier...

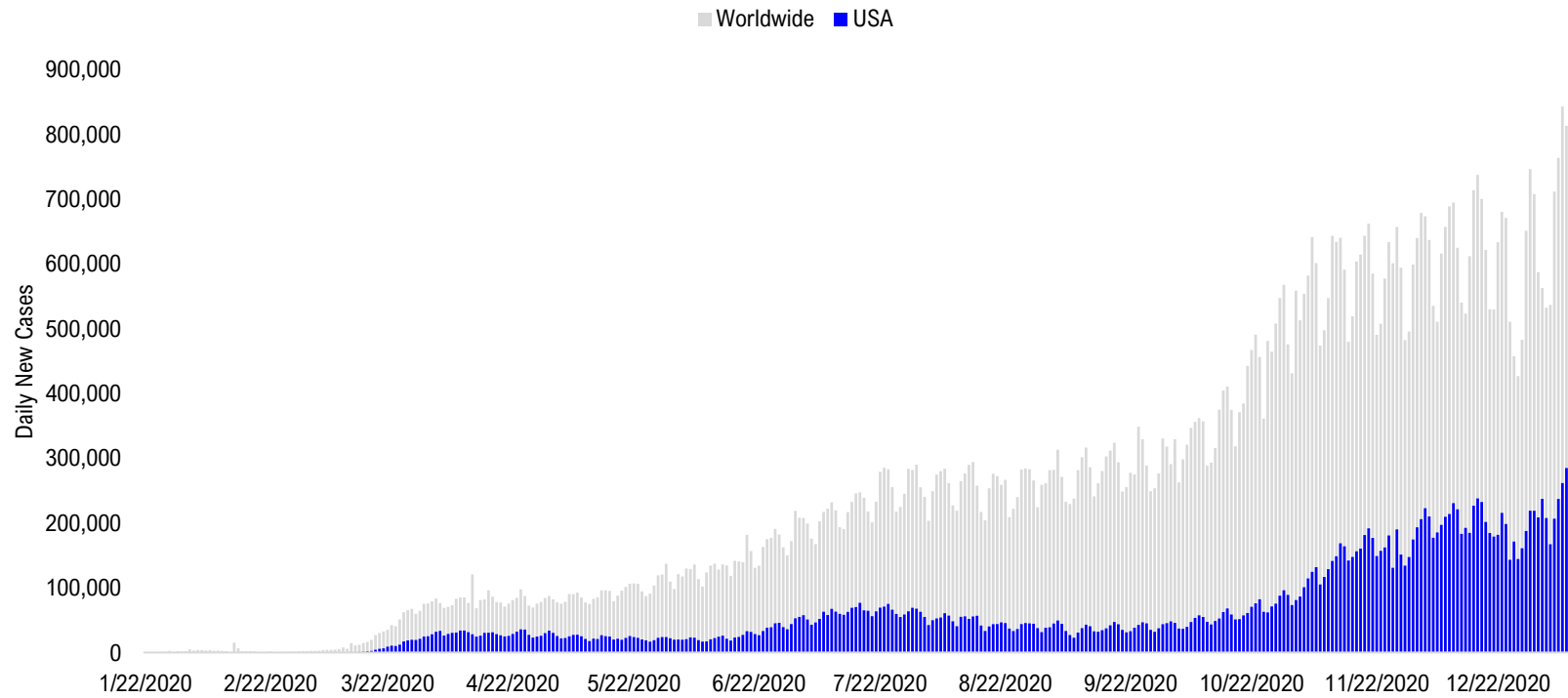


# #15: State COVID-19 Daily Positivity Rate by Tier...

## Composite Daily Positivity Rate



# #16: Global COVID-19 Situation at a Glance...



Aug 28	Sep 11	Sep 25	Oct 9	Oct 23	Nov 6	Nov 20	Dec 4	Dec 18	Jan 1	Jan 10
Latin America 88,255	Pakistan + India + Bangladesh 98,888	Pakistan + India + Bangladesh 88,225	Europe 112,289	Europe 223,797	Europe 312,557	Europe 279,289	Europe 258,860	Europe 282,804	Europe 275,210	US + Canada 261,414
Pakistan + India + Bangladesh 82,644	Latin America 80,841	Latin America 76,712	Pakistan + India + Bangladesh 76,149	US + Canada 71,893	US + Canada 116,877	US + Canada 182,603	US + Canada 213,691	US + Canada 239,069	US + Canada 221,011	Europe 247,847
US + Canada 45,273	Europe 47,339	Europe 67,906	Latin America 69,822	Latin America 69,390	Latin America 59,345	Latin America 68,233	Latin America 88,693	Latin America 108,000	Latin America 96,926	Latin America 107,166
Europe 35,993	US + Canada 37,795	US + Canada 43,790	US + Canada 54,955	Pakistan + India + Bangladesh 56,907	Pakistan + India + Bangladesh 52,404	Pakistan + India + Bangladesh 50,856	Pakistan + India + Bangladesh 41,815	Pakistan + India + Bangladesh 28,277	Africa 29,045	Africa 33,336
Asia ex- India+Pakistan 10,223	Asia ex- India+Pakistan 10,997	Asia ex- India+Pakistan 11,003	Asia ex- India+Pakistan 13,934	Asia ex- India+Pakistan 15,237	Africa 13,656	Asia ex- India+Pakistan 15,310	Asia ex- India+Pakistan 17,499	Africa 20,166	Asia ex- India+Pakistan 19,749	Asia ex- India+Pakistan 25,293
Africa 8,468	Africa 8,309	Africa 8,247	Africa 9,966	Africa 10,615	Asia ex- India+Pakistan 13,638	Africa 14,917	Africa 16,543	Asia ex- India+Pakistan 17,898	Pakistan + India + Bangladesh 17,406	Pakistan + India + Bangladesh 20,836

# Disclosures

This research is for the clients of FS Insight only. For important disclosures and rating histories regarding sectors or companies that are the subject of this report, please contact your sales representative or FS Insight at 150 East 52nd Street, New York, NY, 10022 USA.

## **Analyst Certification (Reg AC)**

Thomas J. Lee, the research analyst denoted by an “AC” on the cover of this report, hereby certifies that all of the views expressed in this report accurately reflect his personal views, which have not been influenced by considerations of the firm’s business or client relationships.

Neither I, nor a member of my household is an officer, director, or advisory board member of the issuer(s) or has another significant affiliation with the issuer(s) that is/are the subject of this research report. There is a possibility that we will from time to time have long or short positions in, and buy or sell, the securities or derivatives, if any, referred to in this research

## **Conflicts of Interest**

This research contains the views, opinions and recommendations of FS Insight . As of the time of writing and publication of this presentation, FS Insight does not know of, or have reason to know of any material conflicts of interest at the time of the publication of this presentation. The Company has no contractual relationship, nor have we received any compensation from any of the companies listed in this research report.

## **Analyst Industry/Sector Views**

Positive (+): The analyst expects the performance of his industry/sector coverage universe over the next 6-18 months to be attractive vs. the relevant broad market benchmark, being the S&P 500 for North America.

Neutral (N): The analyst expects the performance of his or her industry/sector coverage universe over the next 6-18 months to be in line with the relevant broad market benchmark, being the S&P 500 for North America.

Negative (-): The analyst expects his or her industry coverage universe over the next 6-18 months to underperform vs. the relevant broad market benchmark, being the S&P 500 for North America.

## **General Disclosures**

FS Insight is an independent research company and is not a registered investment advisor and is not acting as a broker dealer under any federal or state securities laws. FS Insight is a member of IRC Securities’ Research Prime Services Platform. IRC Securities is a FINRA registered broker-dealer that is focused on supporting the independent research industry. Certain personnel of FS Insight (i.e. Research Analysts) are registered representatives of IRC Securities, a FINRA member firm registered as a broker-dealer with the Securities and Exchange Commission and certain state securities regulators. As registered representatives and independent contractors of IRC Securities, such personnel may receive commissions paid to or shared with IRC Securities for transactions placed by FS Insight clients directly with IRC Securities or with securities firms that may share commissions with IRC Securities in accordance with applicable SEC and FINRA requirements. IRC Securities does not distribute the research of FS Insight , which is available to select institutional clients that have engaged FS Insight .

As registered representatives of IRC Securities our analysts must follow IRC Securities’ Written Supervisory Procedures. Notable compliance policies include (1) prohibition of insider trading or the facilitation thereof, (2) maintaining client confidentiality, (3) archival of electronic communications, and (4) appropriate use of electronic communications, amongst other compliance related policies.

FS Insight does not have the same conflicts that traditional sell-side research organizations have because FS Insight (1) does not conduct any investment banking activities, (2) does not manage any investment funds, and (3) our clients are only institutional investors.

This research is for the clients of FS Insight only. Additional information is available upon request. Information has been obtained from sources believed to be reliable but FS Insight does not warrant its completeness or accuracy except with respect to any disclosures relative to FS Insight and the analyst’s involvement (if any) with any of the subject companies of the research. All pricing is as of the market close for the securities discussed, unless otherwise stated. Opinions and estimates constitute our judgment as of the date of this material and are subject to change without notice. Past performance is not indicative of future results. This material is not intended as an offer or solicitation for the purchase or sale of any financial instrument. The opinions and recommendations herein do not take into account individual client circumstances, risk tolerance, objectives, or needs and are not intended as recommendations of particular securities, financial instruments or strategies. The recipient of this report must make its own independent decision regarding any securities or financial instruments mentioned herein. Except in circumstances where FS Insight expressly agrees otherwise in writing, FS Insight is not acting as a municipal advisor and the opinions or views contained herein are not intended to be, and do not constitute, advice, including within the meaning of Section 15B of the Securities Exchange Act of 1934. All research reports are disseminated and available to all clients simultaneously through electronic publication to our internal client website, FS Insight .com. Not all research content is redistributed to our clients or made available to third-party aggregators or the media. Please contact your sales representative if you would like to receive any of our research publications.

**Copyright 2020 FS Insight LLC. All rights reserved. No part of this material may be reprinted, sold or redistributed without the prior written consent of FS Insight LLC.**