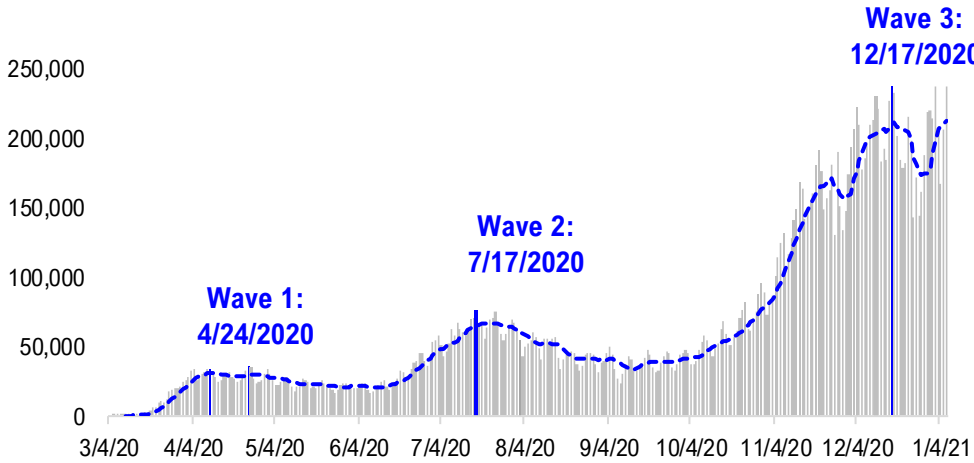


# FSInsight Daily COVID-19 Chartbook

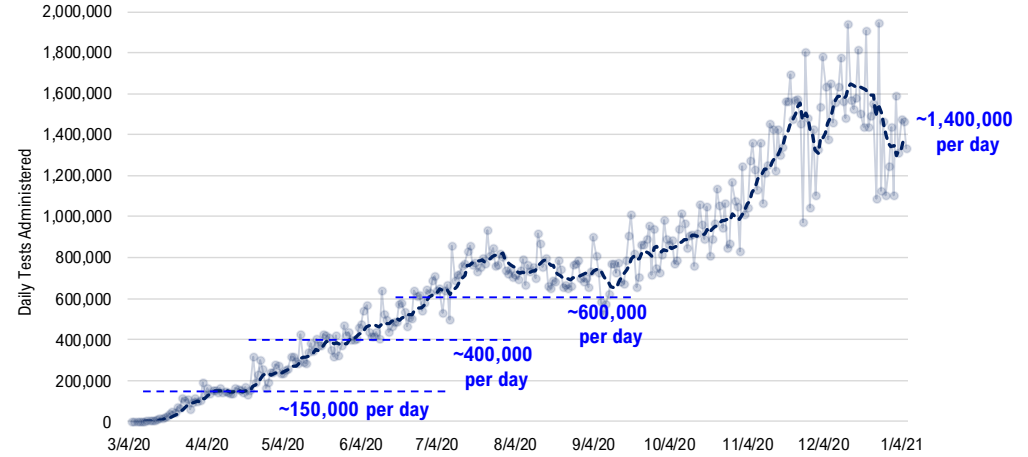


# #1: USA COVID-19 Situation at a Glance...

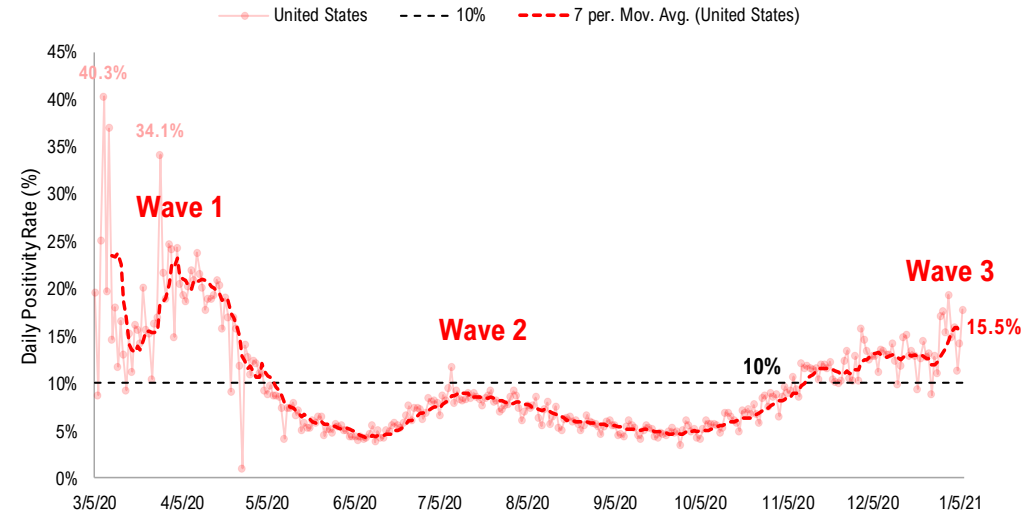
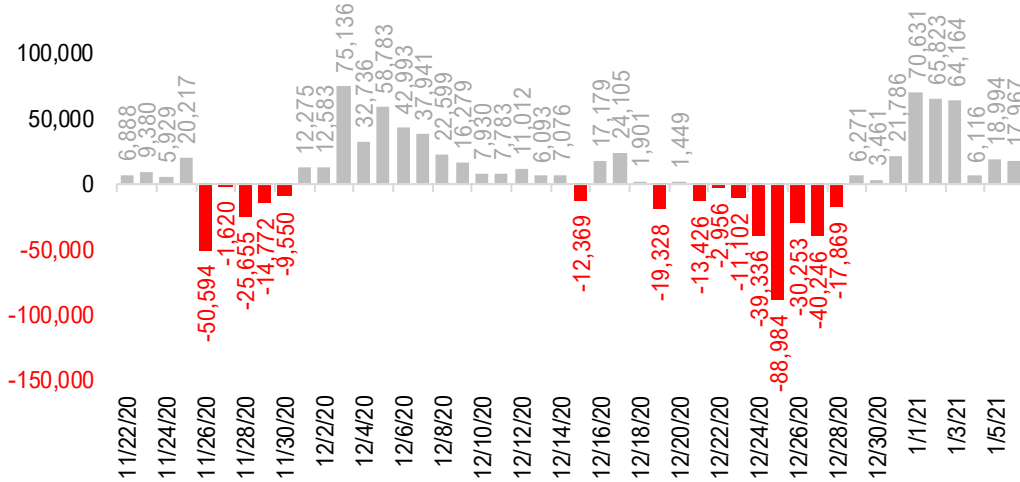
**US daily new cases**



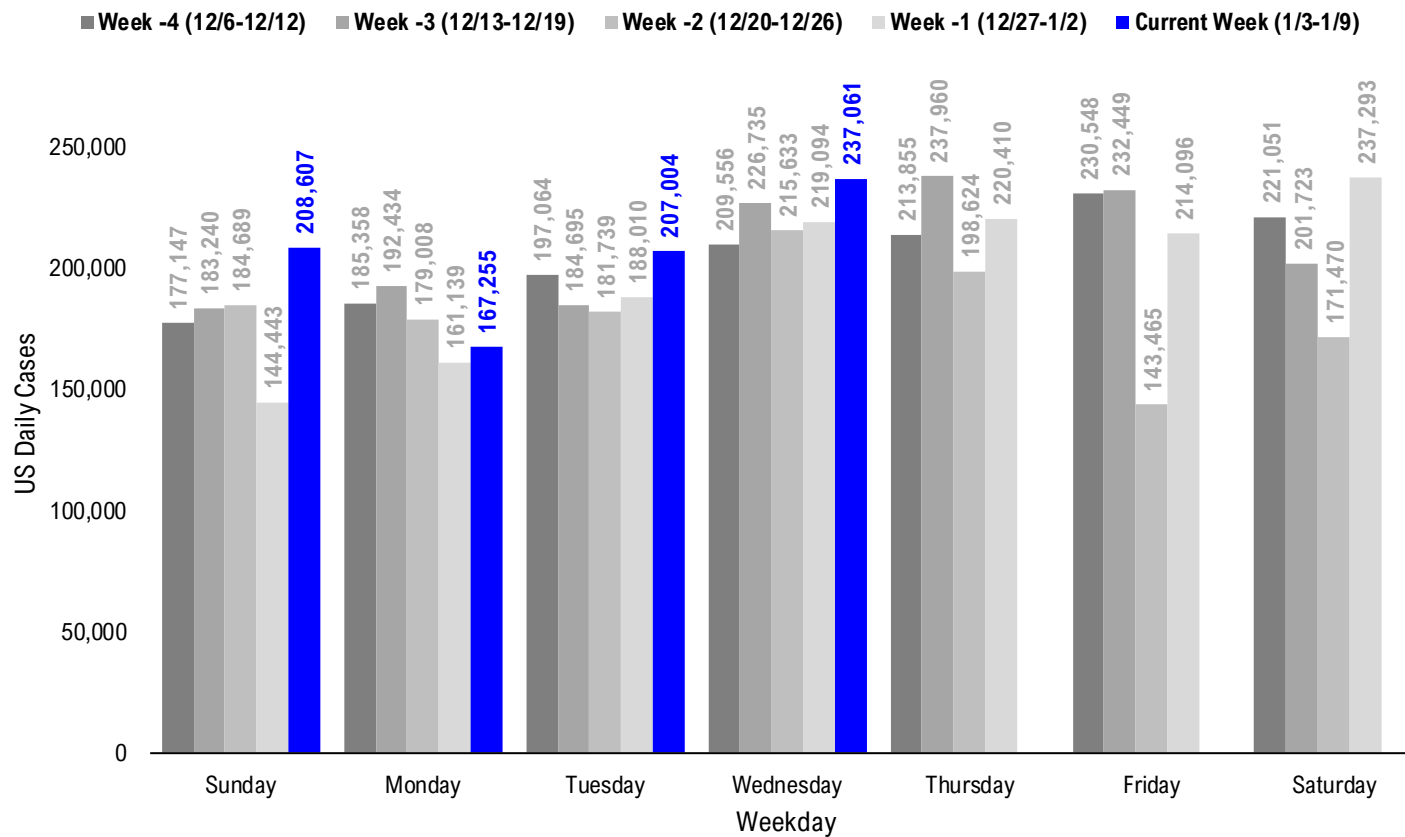
**USA total COVID-19 tests administered**



**US daily new cases rolling 7D delta**



# #2: USA COVID-19 Daily Cases Weekday Seasonality (Past 4 Weeks) ...



# #3: USA State COVID-19 Situation at a Glance...

	Sorted Daily Cases		Daily Cases (3D avg) per 1mm residents				Since Peak		Hospitalization	
	% US Pop	% US GDP	1/6	7D Delta	1/6	7D Delta	# Days	% Decline in Daily Cases	7D Net Hospitalization	7D Net Hospitalization / 7D New Cases
United States	100%	100%	237.061	+17,967	621	+44	19	-12%	7.206	0.5%

	Sorted Daily Cases		Daily Cases (3D avg) per 1mm residents				Since Peak		Hospitalization	
	% US Pop	% US GDP	1/6	7D Delta	1/6	7D Delta	# Days	% Decline in Daily Cases	7D Net Hospitalization	7D Net Hospitalization / 7D New Cases
United States	100%	100%	237.061	+17,967	621	+44	19	-12%	7.206	0.5%

### States:

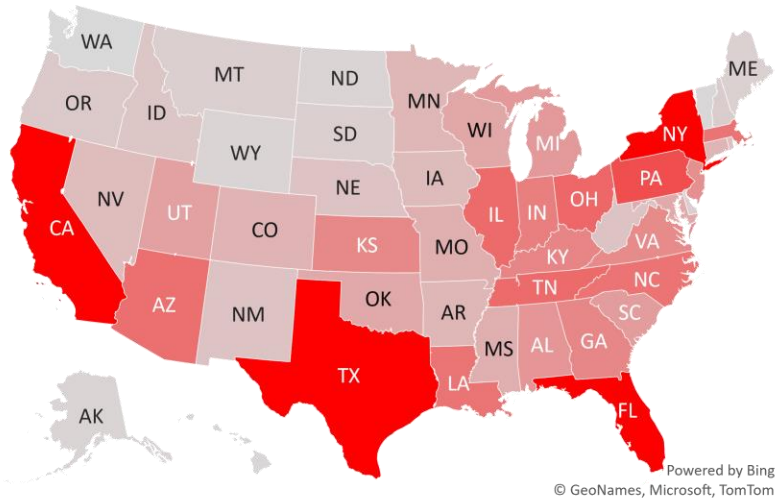
1 California	11.9%	14.6%	29,892	-1,029	767	-37	19	-38%	1,387	0.5%
2 Texas	8.7%	8.8%	19,535	+2,077	713	+55	0	0%	1,636	1.5%
3 Florida	6.5%	5.0%	17,783	+3,912	690	+160	5	-15%	1,005	1.0%
4 New York	5.9%	8.1%	16,648	+3,226	694	+90	4	-16%	773	0.8%
5 Pennsylvania	3.9%	3.8%	9,474	+490	560	+5	32	-40%	-349	(0.7%)
6 Ohio	3.5%	3.3%	7,814	-364	608	+32	27	-38%	-90	(0.2%)
7 Tennessee	2.1%	1.8%	7,588	-632	827	+10	19	-45%	129	0.3%
8 Illinois	3.8%	4.2%	7,569	+195	512	+53	54	-52%	-316	(0.7%)
9 Arizona	2.2%	1.7%	7,206	+1,939	838	+7	3	-49%	351	0.6%
10 North Carolina	3.2%	2.7%	6,952	-1,599	554	+45	9	-34%	554	1.1%
11 Louisiana	1.4%	1.3%	6,882	+128	898	+72	6	-15%	276	1.2%
12 Massachusetts	2.1%	2.8%	6,851	+12	793	+58	6	-10%	159	0.4%
13 Indiana	2.0%	1.8%	6,146	+1,411	651	+98	32	-45%	-159	(0.5%)
14 Kentucky	1.3%	1.0%	5,705	+1,935	725	+113	2	-30%	105	0.5%
15 Georgia	3.2%	2.9%	5,588	+123	494	+39	4	-34%	856	1.9%
16 Kansas	0.9%	0.8%	5,501	-870	1038	-420	42	-32%	71	0.5%
17 Virginia	2.6%	2.6%	5,387	+1,339	529	+108	5	-6%	218	0.7%
18 New Jersey	2.7%	3.0%	5,011	+369	473	+59	31	-26%	17	0.1%
19 Alabama	1.5%	1.1%	4,591	-425	833	+72	18	-14%	154	0.6%
20 Michigan	3.0%	2.6%	4,326	+104	387	+24	49	-55%	-101	(0.5%)
21 South Carolina	1.6%	1.1%	4,138	+1,138	677	+198	3	-21%	423	1.5%
22 Utah	1.0%	0.9%	3,769	+1,155	961	+227	46	-23%	52	0.3%
23 Wisconsin	1.8%	1.6%	3,406	+651	470	+100	54	-63%	30	0.2%
24 Oklahoma	1.2%	1.0%	3,305	+56	632	-33	2	-53%	78	0.3%
25 Maryland	1.8%	2.0%	3,146	+518	418	+60	31	-21%	106	0.6%
26 Missouri	1.8%	1.5%	2,854	+93	363	-4	53	-55%	198	1.0%
27 Mississippi	0.9%	0.6%	2,791	-232	691	-55	5	-26%	32	0.2%
28 Colorado	1.7%	1.8%	2,557	+106	475	+137	46	-54%	-162	(0.9%)

### States:

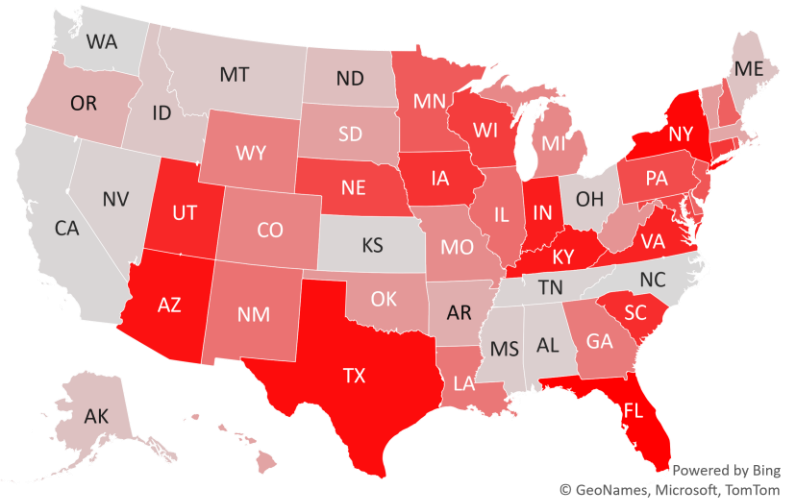
29 Connecticut	1.1%	1.3%	2,486	+790	873	-148	28	-27%	-28	(0.2%)
30 Minnesota	1.7%	1.8%	2,326	+329	416	+177	37	-70%	-109	(0.8%)
31 Arkansas	0.9%	0.6%	2,324	+4	601	+87	5	-22%	149	1.1%
32 Iowa	1.0%	0.9%	2,010	+958	394	+150	54	-69%	-8	(0.1%)
33 Nevada	0.9%	0.8%	1,938	-532	625	+75	32	-33%	-69	(0.5%)
34 Rhode Island	0.3%	0.3%	1,611	+451	1066	+120	32	-31%	-21	(0.3%)
35 West Virginia	0.5%	0.4%	1,516	+64	673	+20	3	-37%	21	0.2%
36 New Mexico	0.6%	0.5%	1,485	+174	571	+59	47	-62%	-80	(0.9%)
37 Nebraska	0.6%	0.6%	1,448	+516	477	+56	48	-67%	-2	(0.0%)
38 Idaho	0.5%	0.4%	1,263	-77	671	-9	27	-41%	-26	(0.4%)
39 Oregon	1.3%	1.2%	1,035	+2	138	-63	31	-67%	-30	(0.4%)
40 New Hampshire	0.4%	0.4%	846	+301	585	-11	2	-28%	-5	(0.1%)
41 Montana	0.3%	0.2%	682	-192	524	+50	52	-59%	-4	(0.1%)
42 Delaware	0.3%	0.4%	629	+222	768	+242	23	-15%	33	0.6%
43 South Dakota	0.3%	0.3%	608	+46	434	-67	53	-79%	-29	(1.0%)
44 Maine	0.4%	0.3%	525	-65	371	-30	13	-23%	14	0.4%
45 North Dakota	0.2%	0.3%	338	-33	346	+24	53	-86%	-11	(0.7%)
46 Alaska	0.2%	0.3%	328	-57	356	+44	32	-68%	26	1.1%
47 Wyoming	0.2%	0.2%	321	+111	585	+47	48	-66%	-1	(0.1%)
48 District of Columbia	0.2%	0.7%	316	+93	339	+77	32	-30%	25	1.5%
49 Puerto Rico	1.0%	0.5%	298	+218	142	-75	18	-60%	-33	(1.0%)
50 Hawaii	0.4%	0.5%	142	+36	83	+30	130	-60%	42	3.8%
51 Vermont	0.2%	0.2%	120	+46	195	+63	33	-30%	7	0.8%
52 U.S. Virgin Islands	0.0%	0.0%	28	-3	131	+34	138	-69%	0	0.0%
53 Guam	0.0%	0.0%	21	+6	103	+26	57	-91%	-4	(0.7%)
54 Northern Mariana	0.0%	0.0%	2	+2	12	+12	71	-83%	0	0.0%
55 Washington	2.3%	2.7%	0	-1,269	140	-88	42	-75%	-84	(0.5%)
56 American Samoa	0.0%	0.0%	0	+0		+0	0	0%	0	

# #4: USA COVID-19 Heat Map...

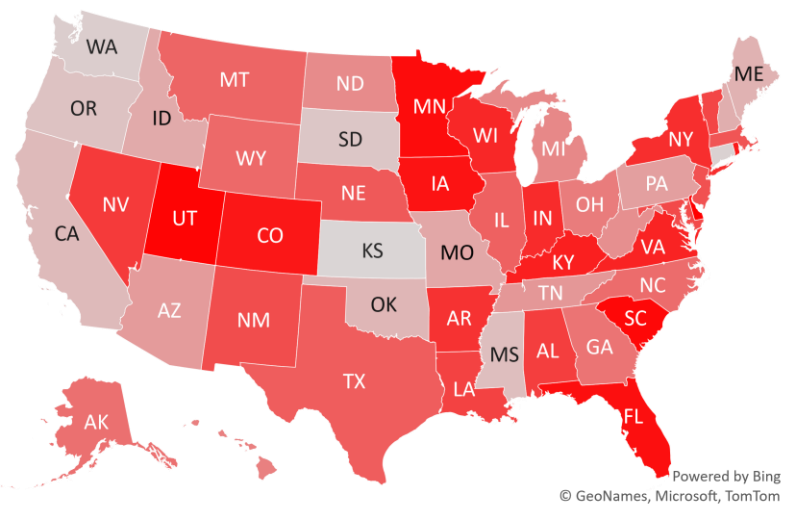
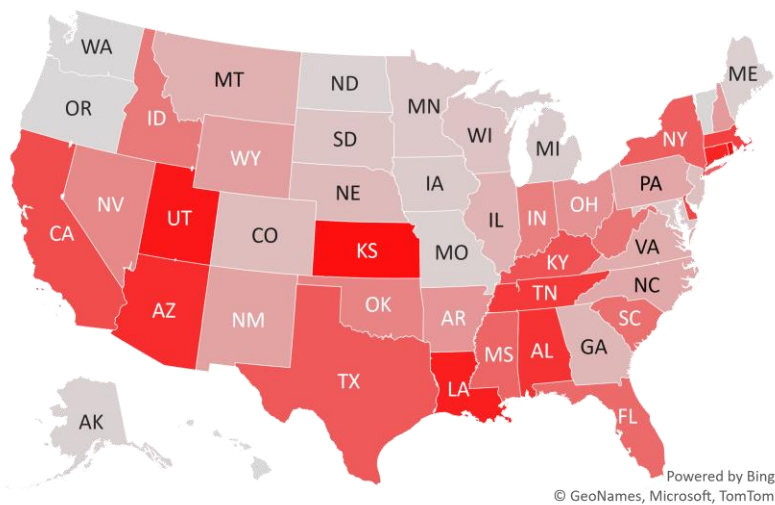
### Daily Case Increases



### 7D Delta in Daily New Cases



### Daily Case Increases per 1mm Resident (3D Avg)



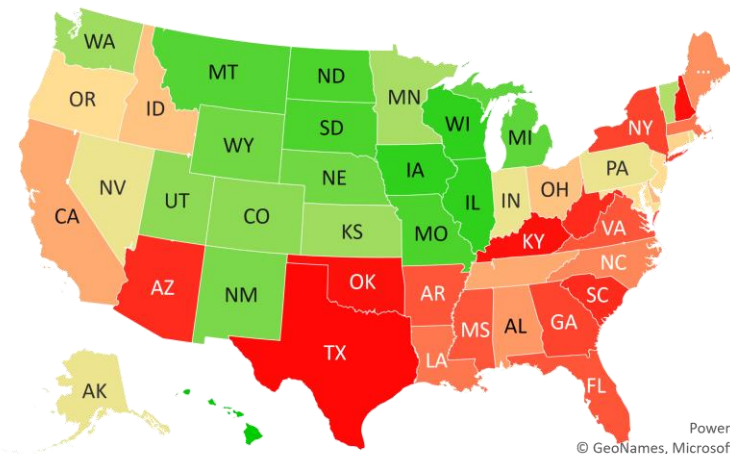
# #5: # of Days since Daily Case Peaked by States...

## # Days since Daily Cases (3D Avg) Peak (as of 1/6)

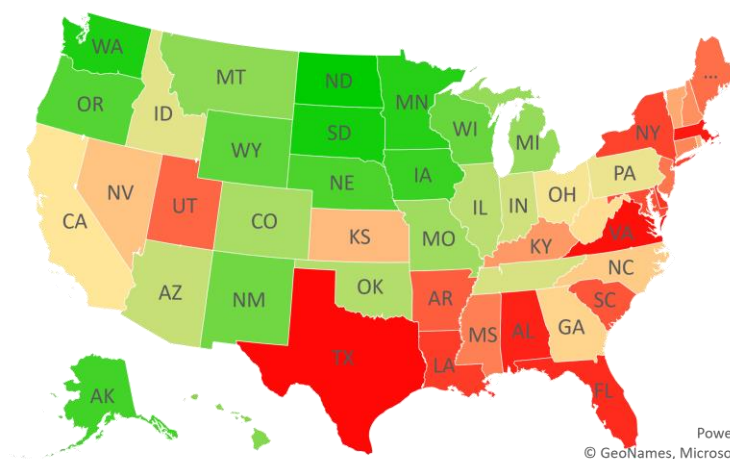
	Sorted			
	Peak Date	1/6/21	% off the Peak	% US Pop
United States	12/18/20	19	-12%	100%
<b>States:</b>				
U.S. Virgin Islands	8/21/20	138	-69%	0.0%
Hawaii	8/29/20	130	-60%	0.4%
Northern Mariana Island	10/27/20	71	-83%	0.0%
Guam	11/10/20	57	-91%	0.0%
Wisconsin	11/13/20	54	-63%	1.8%
Illinois	11/13/20	54	-52%	3.8%
Iowa	11/13/20	54	-69%	1.0%
South Dakota	11/14/20	53	-79%	0.3%
North Dakota	11/14/20	53	-86%	0.2%
Missouri	11/14/20	53	-55%	1.8%
Montana	11/15/20	52	-59%	0.3%
Michigan	11/18/20	49	-55%	3.0%
Wyoming	11/19/20	48	-66%	0.2%
Nebraska	11/19/20	48	-67%	0.6%
New Mexico	11/20/20	47	-62%	0.6%
Utah	11/21/20	46	-23%	1.0%
Colorado	11/21/20	46	-54%	1.7%
Washington	11/25/20	42	-75%	2.3%
Kansas	11/25/20	42	-32%	0.9%
Minnesota	11/30/20	37	-70%	1.7%
Vermont	12/4/20	33	-30%	0.2%
Rhode Island	12/5/20	32	-31%	0.3%
Pennsylvania	12/5/20	32	-40%	3.9%
Nevada	12/5/20	32	-33%	0.9%
Indiana	12/5/20	32	-45%	2.0%
District of Columbia	12/5/20	32	-30%	0.2%
Alaska	12/5/20	32	-68%	0.2%
Oregon	12/6/20	31	-67%	1.3%

	Sorted			
	Peak Date	1/6/21	% off the Peak	% US Pop
United States	12/18/20	19	-12%	100%
<b>States:</b>				
New Jersey	12/6/20	31	-26%	2.7%
Maryland	12/6/20	31	-21%	1.8%
Connecticut	12/9/20	28	-27%	1.1%
Ohio	12/10/20	27	-38%	3.5%
Idaho	12/10/20	27	-41%	0.5%
Delaware	12/14/20	23	-15%	0.3%
Tennessee	12/18/20	19	-45%	2.1%
California	12/18/20	19	-38%	11.9%
Puerto Rico	12/19/20	18	-60%	1.0%
Alabama	12/19/20	18	-14%	1.5%
Maine	12/24/20	13	-23%	0.4%
North Carolina	12/28/20	9	-34%	3.2%
Massachusetts	12/31/20	6	-10%	2.1%
Louisiana	12/31/20	6	-15%	1.4%
Virginia	1/1/21	5	-6%	2.6%
Mississippi	1/1/21	5	-26%	0.9%
Florida	1/1/21	5	-15%	6.5%
Arkansas	1/1/21	5	-22%	0.9%
New York	1/2/21	4	-16%	5.9%
Georgia	1/2/21	4	-34%	3.2%
West Virginia	1/3/21	3	-37%	0.5%
South Carolina	1/3/21	3	-21%	1.6%
Arizona	1/3/21	3	-49%	2.2%
Oklahoma	1/4/21	2	-53%	1.2%
New Hampshire	1/4/21	2	-28%	0.4%
Kentucky	1/4/21	2	-30%	1.3%
Texas	1/6/21	0	0%	8.7%

## # Days since Daily Case Peak: **Longer = Good**



## Daily Cases % off the Peak: **Larger Decline = Good**



# #6: US New Cases by States... (sorted by today's new cases)

*Sorted*

7D Ago      Last 3-day Trend

Today's COVID stats for Washington state is not available as of 8 PM ET...

	12/30/20	1/4/21	1/5/21	1/6/21	vs 7D ago
United States	219,094	167,255	207,004	237,061	+17,967
<b>States:</b>					
California	30,921	29,633	31,440	29,892	
Texas	17,458	15,976	26,543	19,535	
Florida	13,871	11,256	15,431	17,783	<--higher
New York	13,422	11,209	12,666	16,648	<--higher
Pennsylvania	8,984	3,226	8,818	9,474	
Ohio	8,178	5,942	7,580	7,814	
Tennessee	8,220	3,953	5,399	7,588	
Illinois	7,374	5,059	6,839	7,569	
Arizona	5,267	5,158	5,932	7,206	<--higher
North Carolina	8,551	5,187	5,285	6,952	
Louisiana	6,754	1,190	4,454	6,882	
Massachusetts	6,839	4,906	4,634	6,851	
Indiana	4,735	3,617	3,395	6,146	<--higher
Kentucky	3,770	2,317	1,693	5,705	<--higher
Georgia	5,465	4,030	6,102	5,588	
Kansas	6,371	3,572	0	5,501	
Virginia	4,048	3,771	4,377	5,387	<--higher
New Jersey	4,642	2,275	5,319	5,011	
Alabama	5,016	2,161	5,498	4,591	
Michigan	4,222	4,992	2,291	4,326	
South Carolina	3,000	3,624	2,700	4,138	<--higher
Utah	2,614	2,160	3,318	3,769	<--higher
Wisconsin	2,755	1,407	3,403	3,406	<--higher
Oklahoma	3,249	2,699	1,497	3,305	
Maryland	2,628	2,483	1,956	3,146	
Missouri	2,761	1,196	2,632	2,854	
Mississippi	3,023	1,616	1,767	2,791	
Colorado	2,451	2,185	3,458	2,557	

*Sorted*

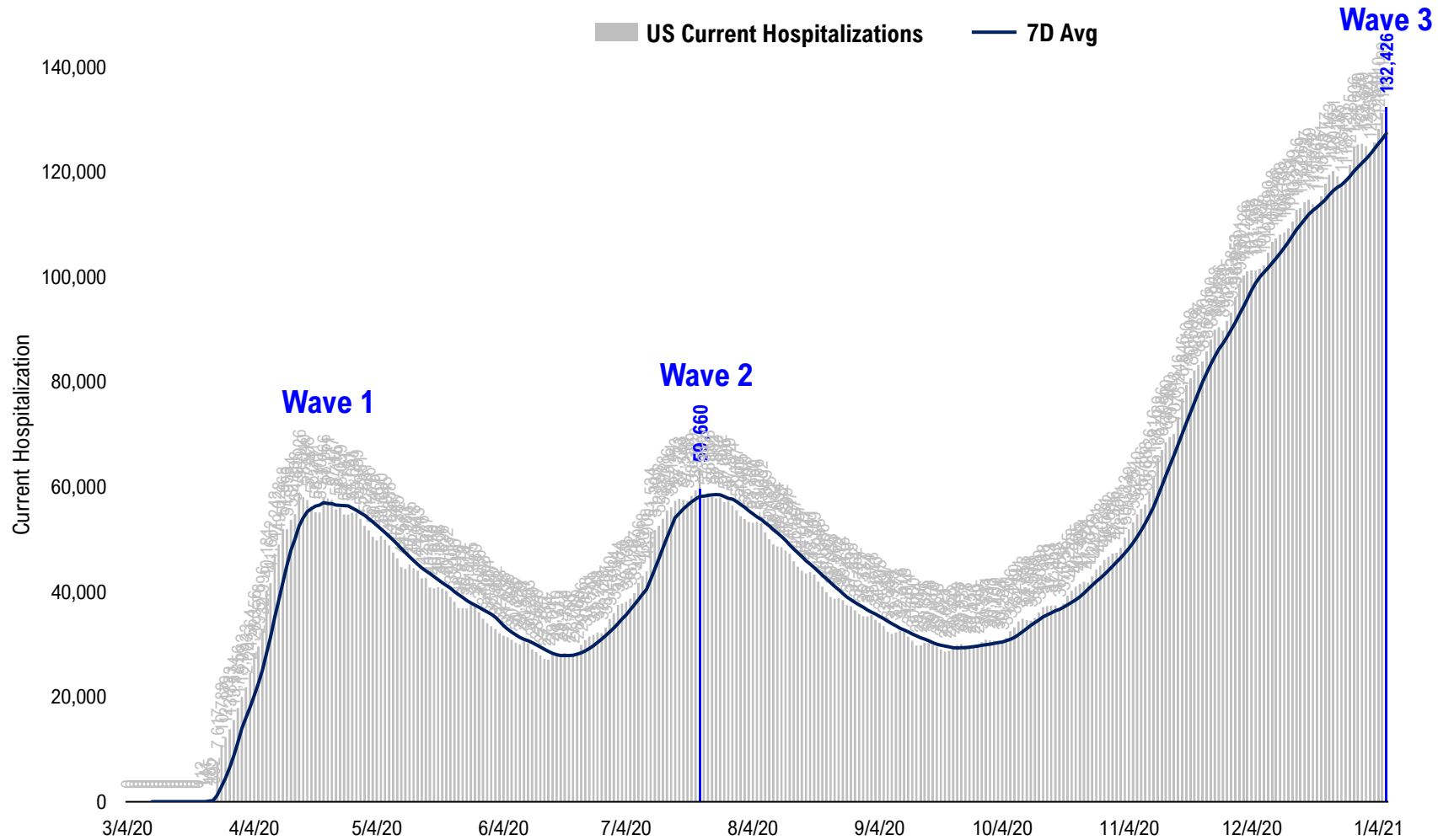
7D Ago      Last 3-day Trend

Today's COVID stats for Washington state is not available as of 8 PM ET...

	12/30/20	1/4/21	1/5/21	1/6/21	vs 7D ago
United States	219,094	167,255	207,004	237,061	+17,967
<b>States:</b>					
Connecticut	1,696	4,516	2,332	2,486	<--higher
Minnesota	1,997	3,144	1,573	2,326	
Arkansas	2,320	846	2,275	2,324	
Iowa	1,052	701	1,021	2,010	<--higher
Nevada	2,470	1,414	2,423	1,938	
Rhode Island	1,160	633	1,144	1,611	<--higher
West Virginia	1,452	828	1,276	1,516	
New Mexico	1,311	921	1,184	1,485	
Nebraska	932	738	585	1,448	<--higher
Idaho	1,340	798	1,538	1,263	
Oregon	1,033	708	0	1,035	
New Hampshire	545	878	664	846	<--higher
Montana	874	283	714	682	
Delaware	407	849	767	629	<--higher
South Dakota	562	111	433	608	
Maine	590	376	597	525	
North Dakota	371	199	254	338	
Alaska	385	260	194	328	
Wyoming	210	372	322	321	<--higher
District of Columbia	223	140	262	316	<--higher
Puerto Rico	80	558	501	298	<--higher
Hawaii	106	89	123	142	<--higher
Vermont	74	80	165	120	<--higher
U.S. Virgin Islands	31	1	13	28	
Guam	15	17	13	21	<--higher
Northern Mariana Islands	0	0	0	2	
Washington	1,269	995	2,204	0	
American Samoa	0	0	0	0	

# #7: US Daily Hospitalizations...

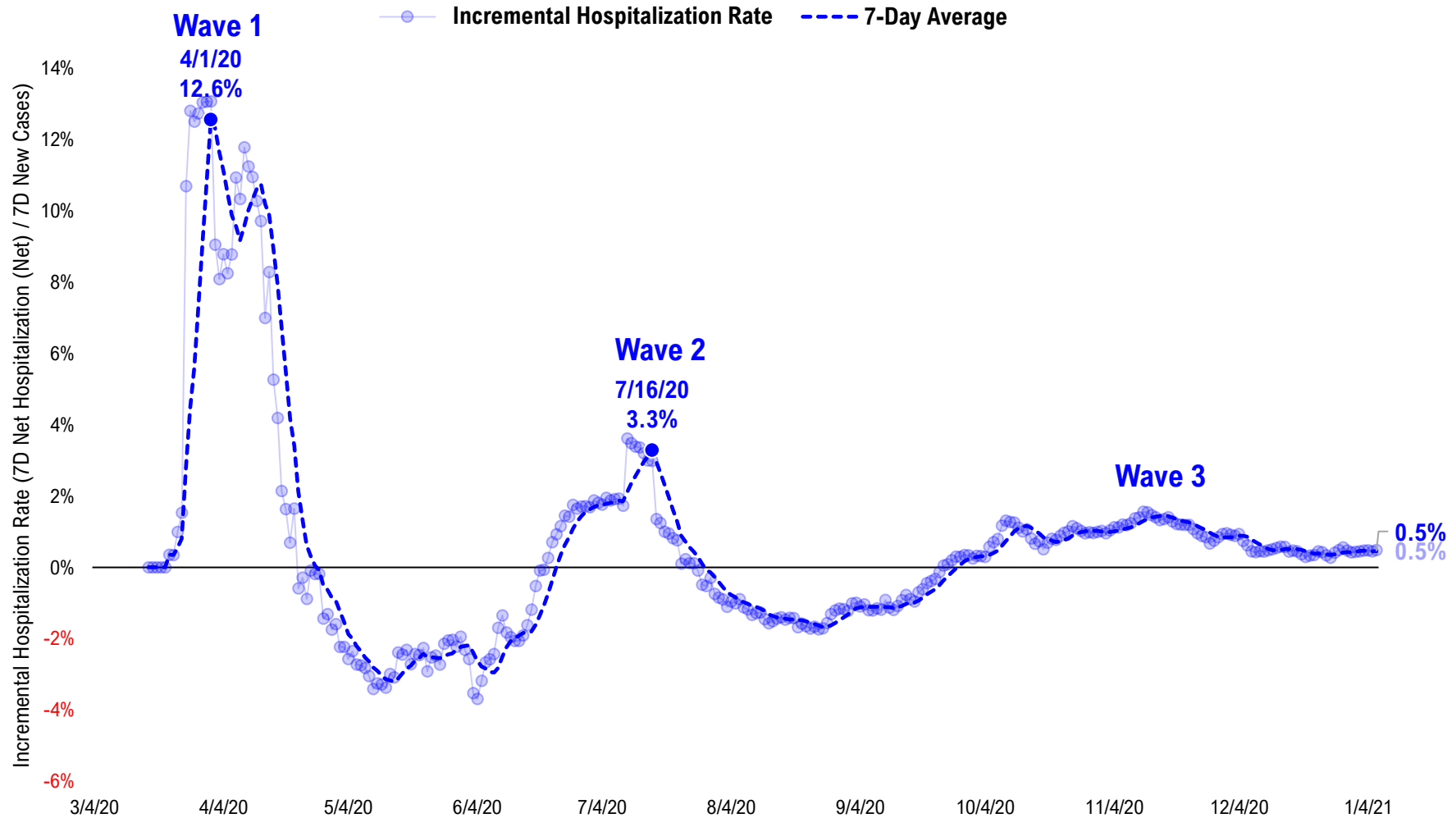
### US Net Hospitalizations (aggregate of 50 states + Washington, D.C.)





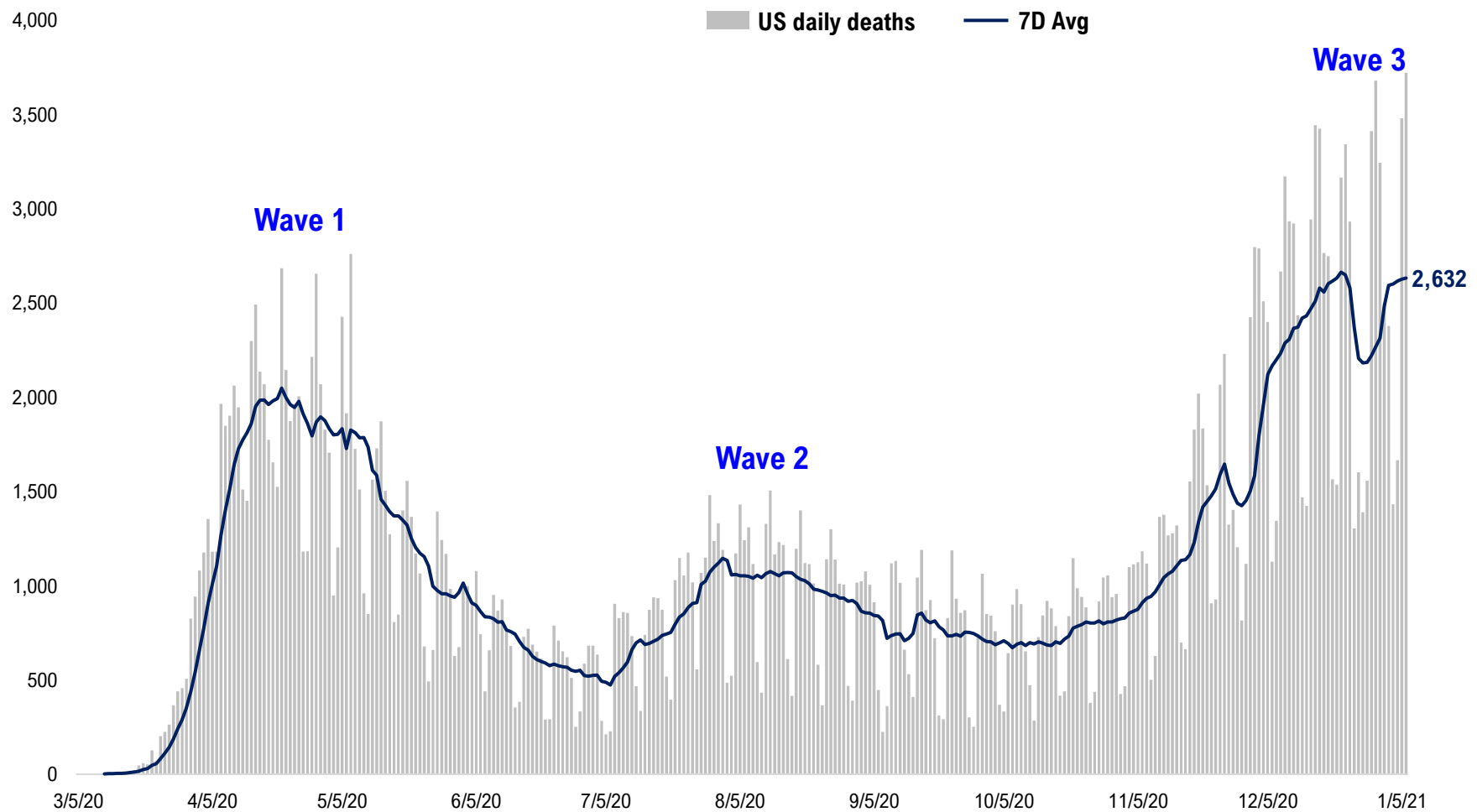
# #8: Incremental Hospitalization Rate...

Incremental Hospitalization Rate: 7D Net Hospitalizations / 7D Total New Cases  
(aggregate of 50 states + Washington, D.C.)



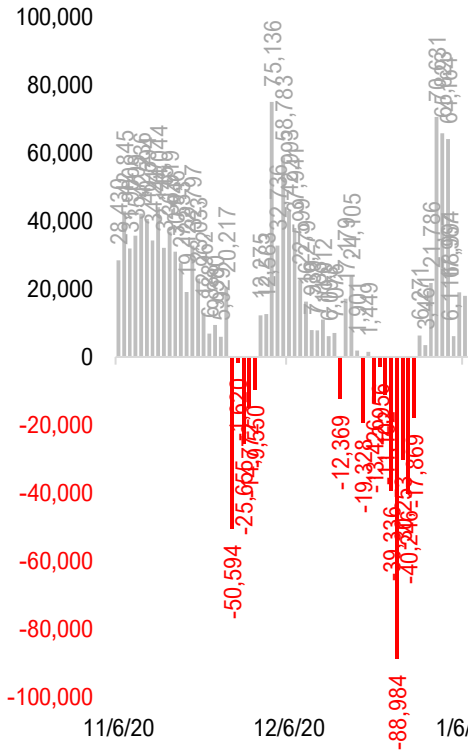
# #9: US Daily New Fatalities...

## US daily COVID-19 Fatalities

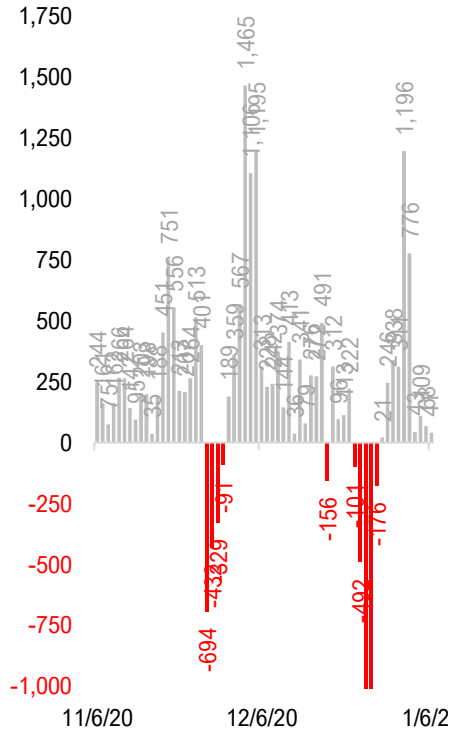


# #10: Rolling 7-Day Change in the Key Metrics... (Past 8 Weeks)

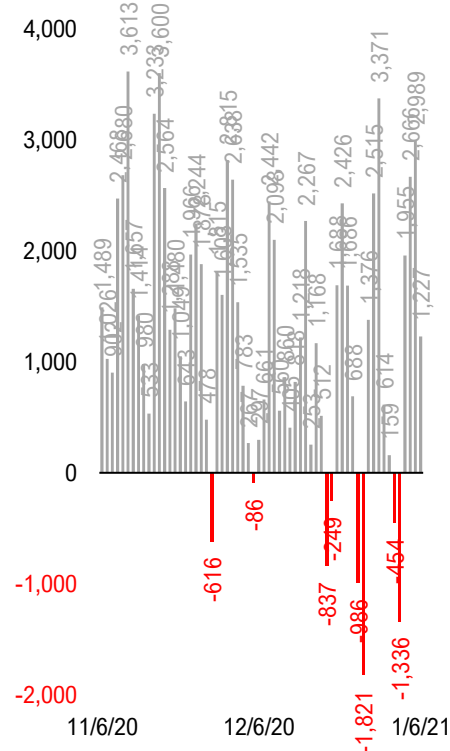
**Daily New Cases**  
(8/10-8/23 ex-CA; 9/4-9/5 ex-IL)



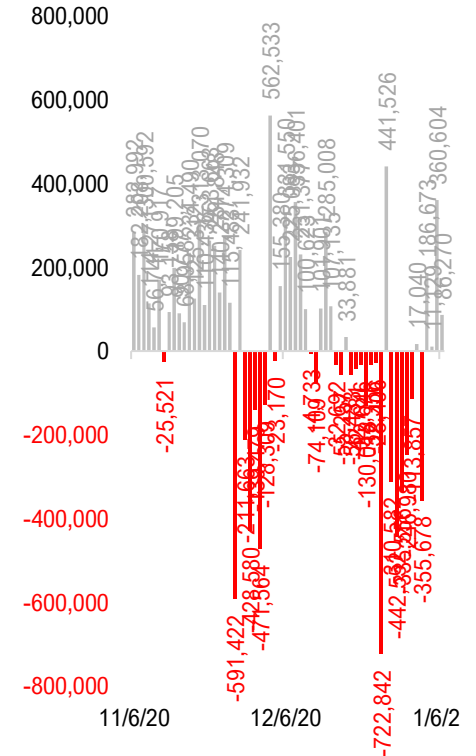
**Daily Deaths**



**Daily Net Hospitalization**  
(Red = more discharge than admission)

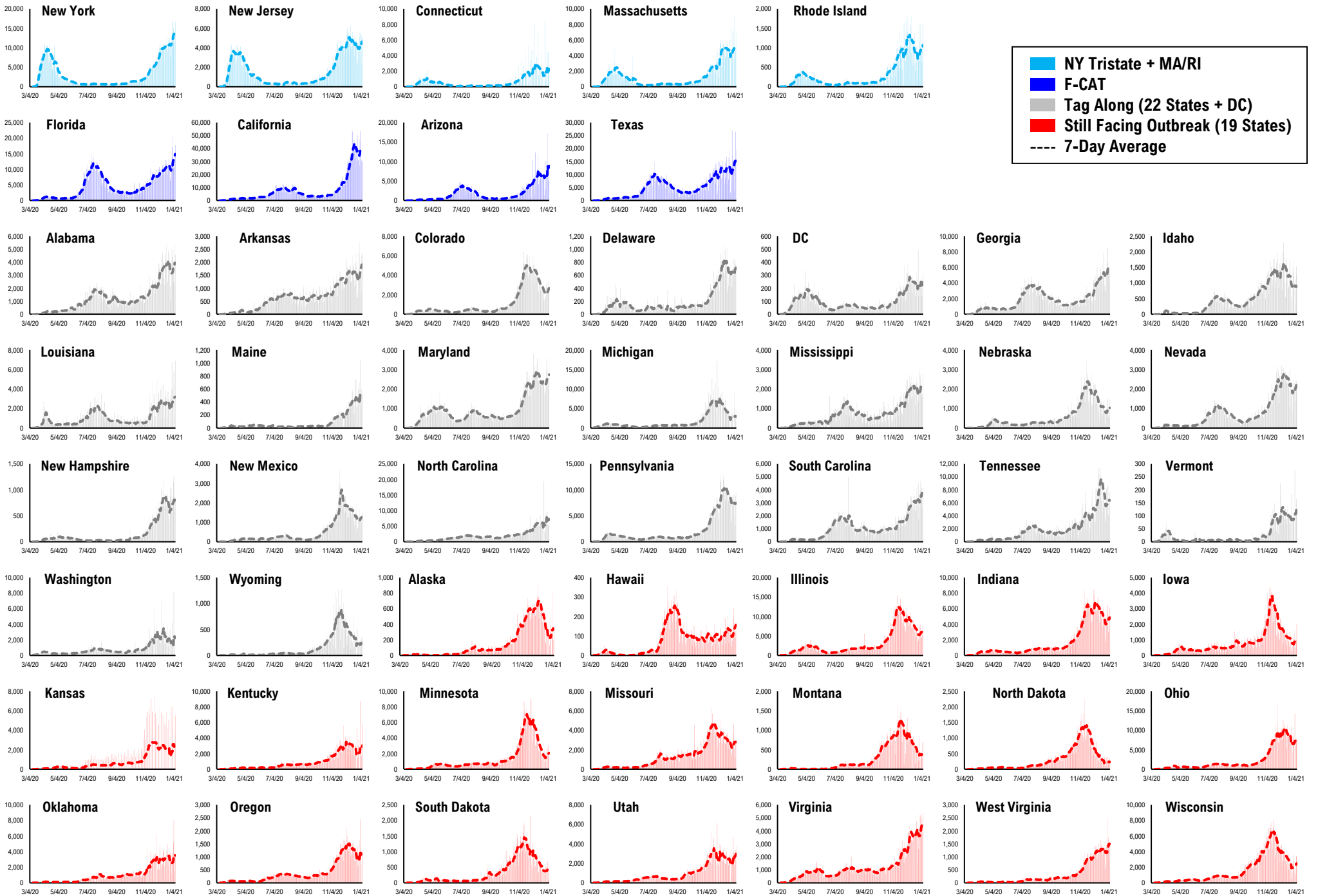


**Daily Tests**

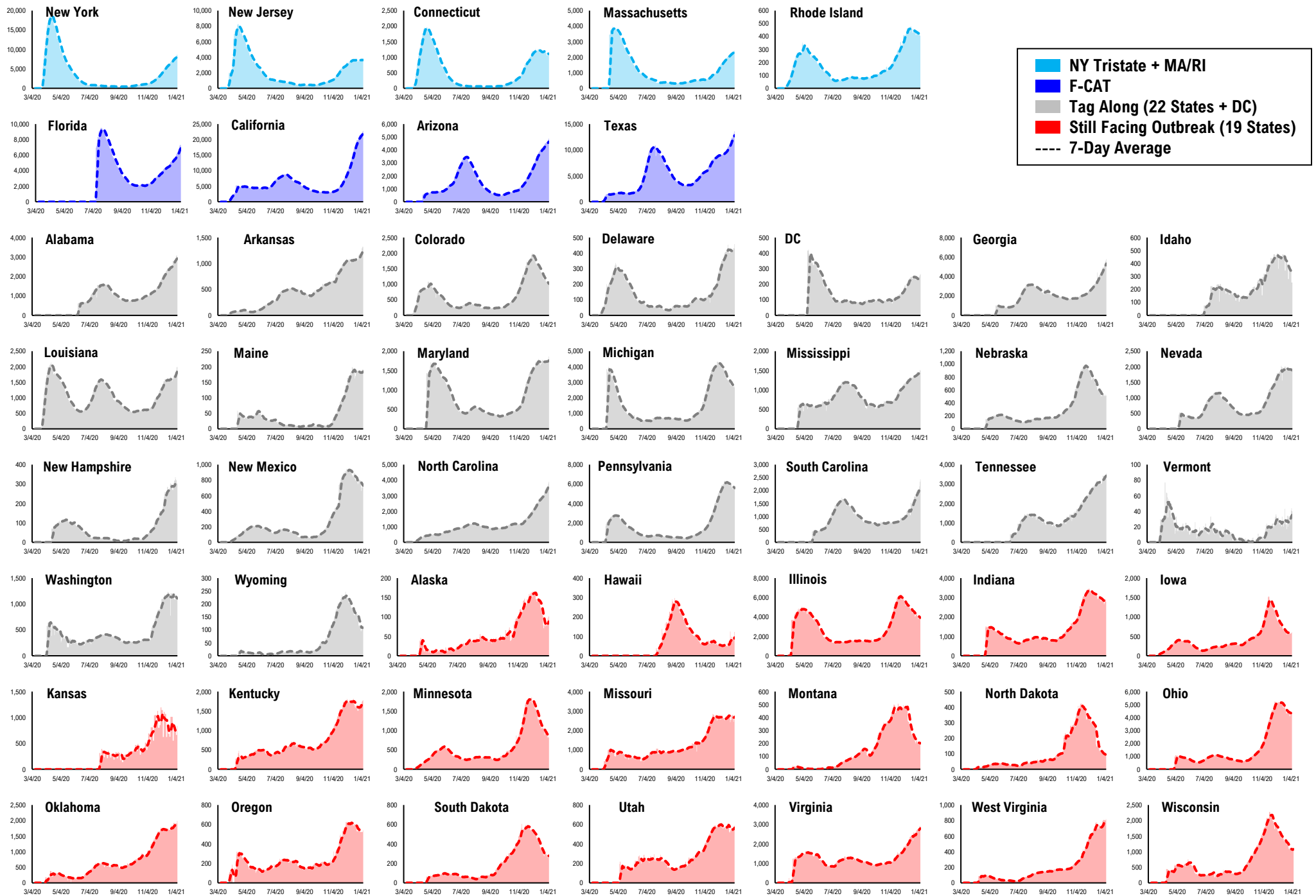


\* Ignored California between 8/10 and 8/23, due to its data glitch caused 300,000-case backlog  
Source: Fundstrat, COVID-19 Tracking Project, State Department of Health

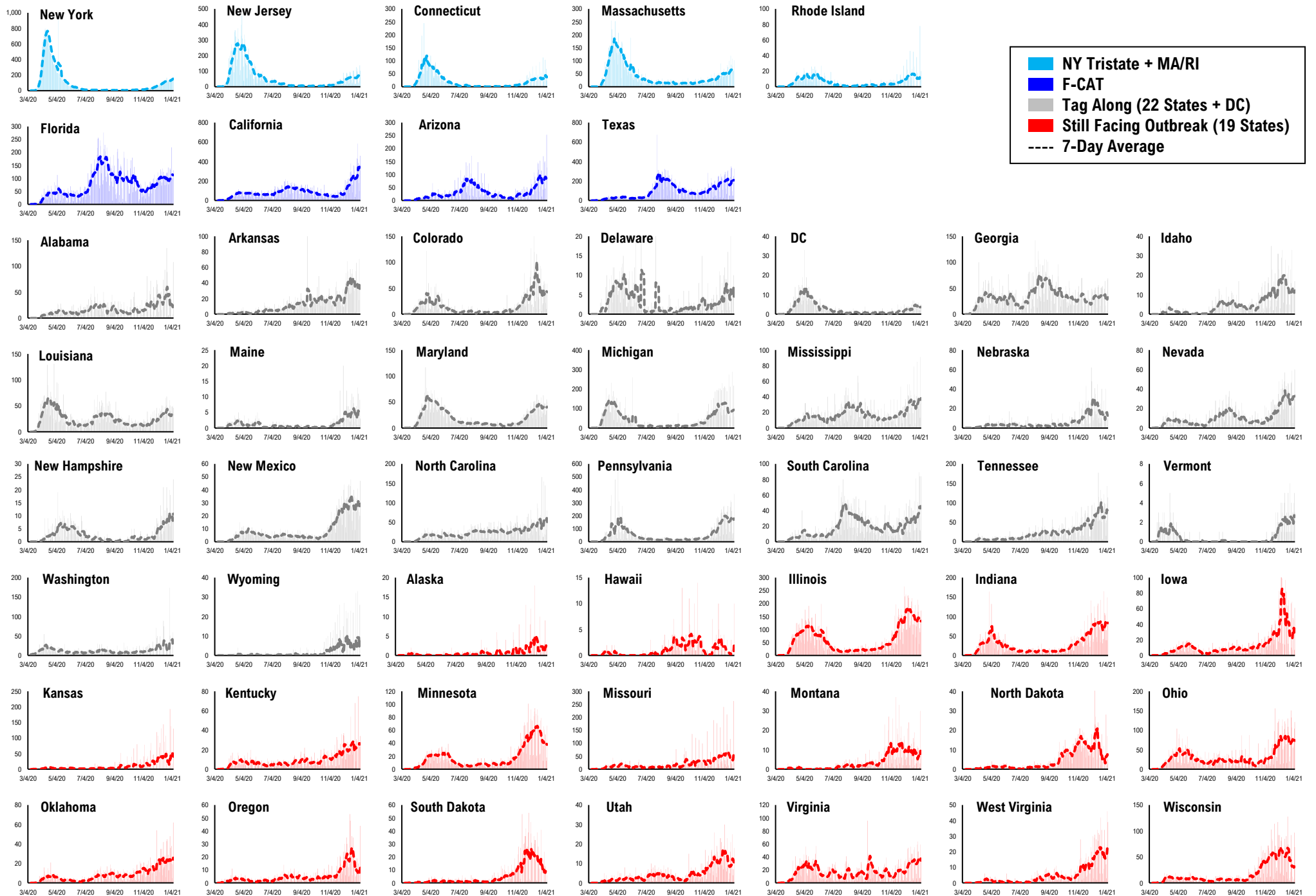
# #11: Daily New Cases by States...



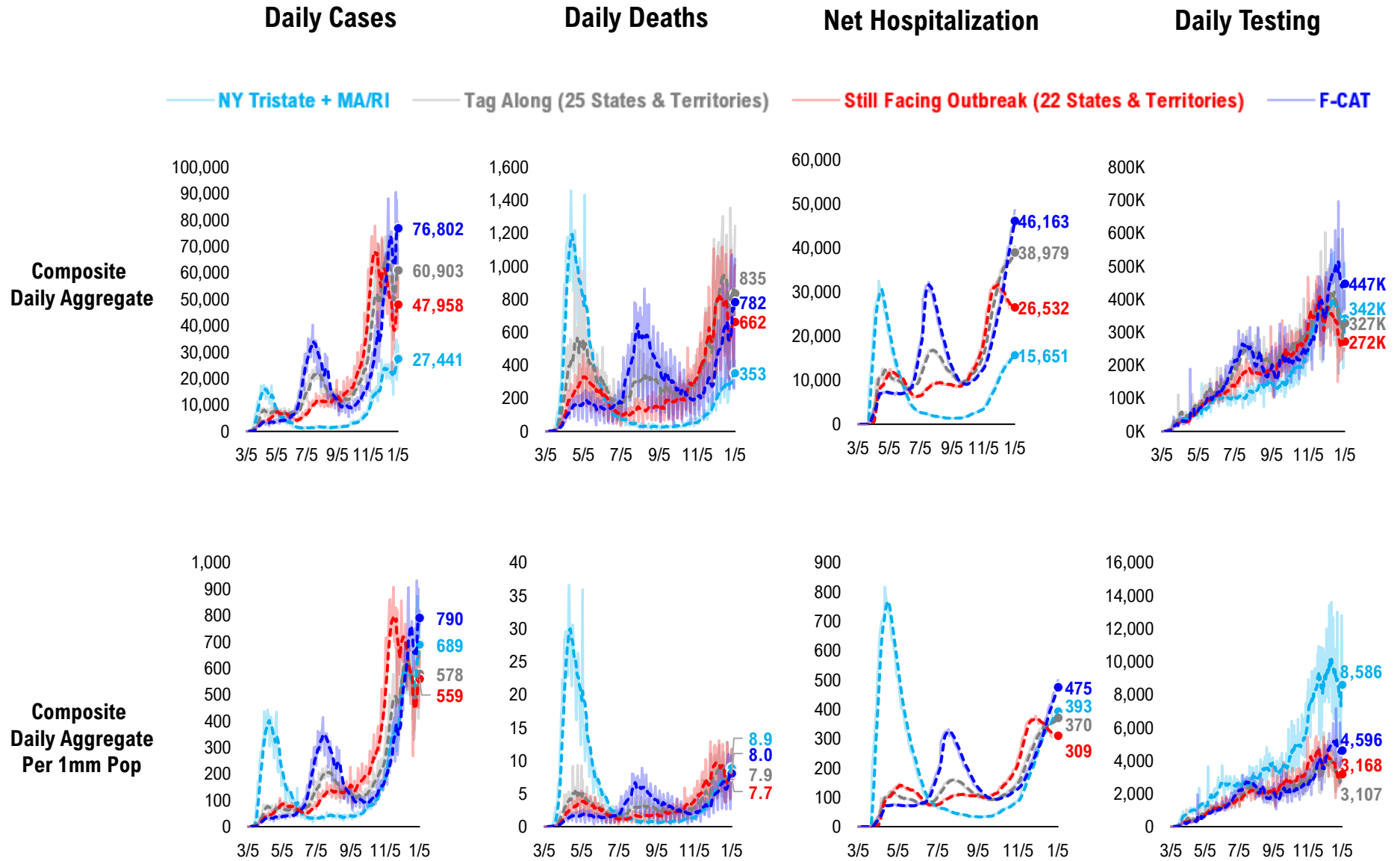
# #12: Current Hospitalizations by States...



# #13: Daily New Deaths by States...

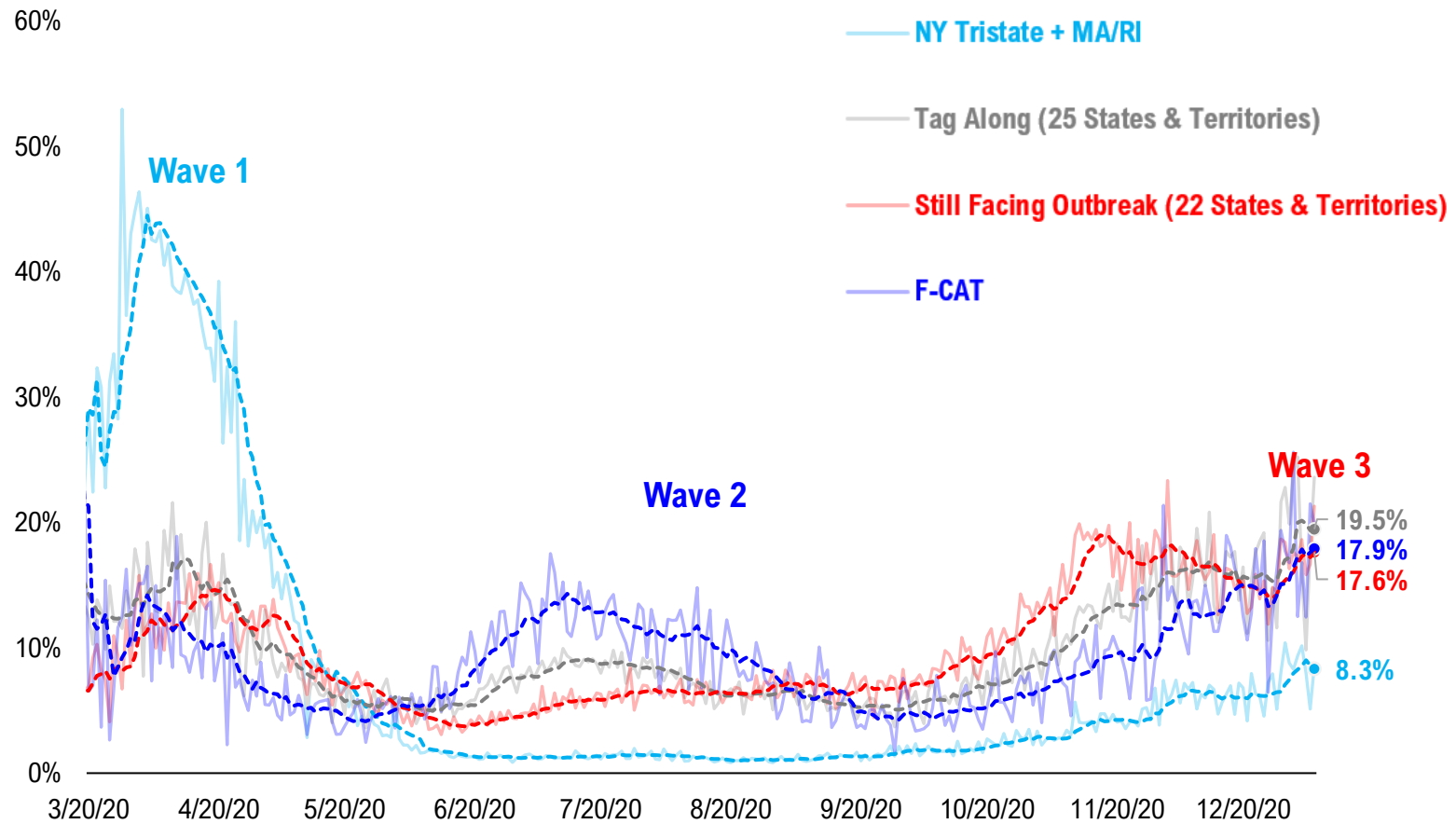


# #14: State COVID-19 situation by Tier...



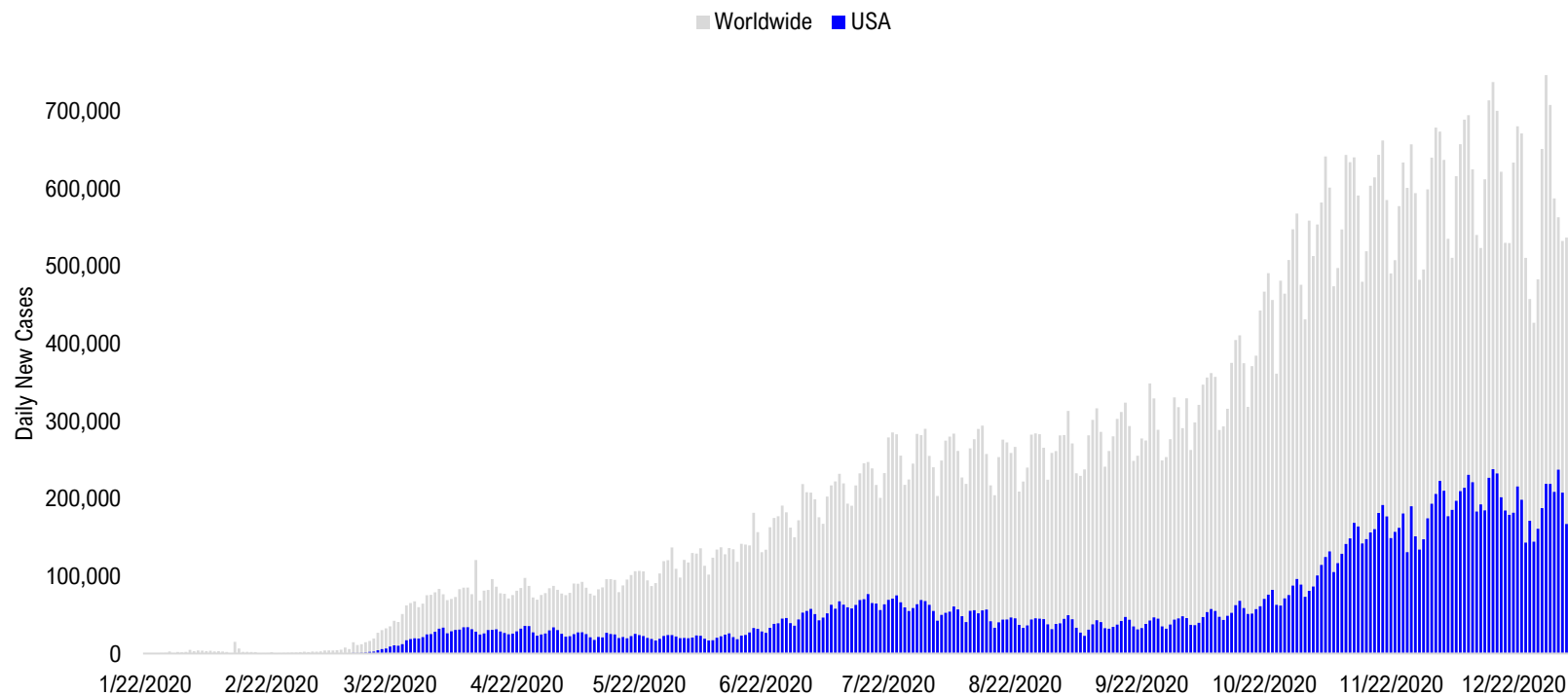
# #15: State COVID-19 Daily Positivity Rate by Tier...

## Composite Daily Positivity Rate





# #16: Global COVID-19 Situation at a Glance...



Aug 21	Sep 4	Sep 18	Oct 2	Oct 16	Oct 30	Nov 13	Nov 27	Dec 11	Dec 25	Jan 5
Latin America 85,471	Latin America 88,295	Pakistan + India + Bangladesh 98,115	Pakistan + India + Bangladesh 84,614	Europe 156,735	Europe 288,231	Europe 301,976	Europe 274,571	Europe 268,913	Europe 249,233	Europe 230,463
Pakistan + India + Bangladesh 72,740	Pakistan + India + Bangladesh 87,400	Latin America 76,730	Europe 77,882	Latin America 67,985	US + Canada 89,511	US + Canada 157,595	US + Canada 172,701	US + Canada 224,580	US + Canada 190,814	US + Canada 204,944
US + Canada 45,159	US + Canada 44,962	Europe 57,979	Latin America 61,017	Pakistan + India + Bangladesh 66,697	Latin America 65,611	Latin America 74,234	Latin America 75,171	Latin America 92,555	Latin America 89,562	Latin America 74,185
Europe 31,851	Europe 40,040	US + Canada 43,204	US + Canada 47,741	US + Canada 63,472	Pakistan + India + Bangladesh 51,456	Pakistan + India + Bangladesh 49,697	Pakistan + India + Bangladesh 48,359	Pakistan + India + Bangladesh 35,248	Pakistan + India + Bangladesh 26,828	Africa 23,339
Asia ex- India+Pakistan 10,921	Asia ex- India+Pakistan 9,069	Asia ex- India+Pakistan 11,067	Asia ex- India+Pakistan 11,658	Asia ex- India+Pakistan 13,788	Asia ex- India+Pakistan 12,846	Africa 14,829	Asia ex- India+Pakistan 16,287	Africa 19,264	Africa 25,863	Pakistan + India + Bangladesh 19,888
Africa 10,566	Africa 8,318	Africa 7,997	Africa 8,146	Africa 10,428	Africa 12,181	Asia ex- India+Pakistan 14,319	Africa 14,762	Asia ex- India+Pakistan 17,917	Asia ex- India+Pakistan 18,697	Asia ex- India+Pakistan 17,643

# Disclosures

This research is for the clients of FS Insight only. For important disclosures and rating histories regarding sectors or companies that are the subject of this report, please contact your sales representative or FS Insight at 150 East 52nd Street, New York, NY, 10022 USA.

## **Analyst Certification (Reg AC)**

Thomas J. Lee, the research analyst denoted by an “AC” on the cover of this report, hereby certifies that all of the views expressed in this report accurately reflect his personal views, which have not been influenced by considerations of the firm’s business or client relationships.

Neither I, nor a member of my household is an officer, director, or advisory board member of the issuer(s) or has another significant affiliation with the issuer(s) that is/are the subject of this research report. There is a possibility that we will from time to time have long or short positions in, and buy or sell, the securities or derivatives, if any, referred to in this research

## **Conflicts of Interest**

This research contains the views, opinions and recommendations of FS Insight . As of the time of writing and publication of this presentation, FS Insight does not know of, or have reason to know of any material conflicts of interest at the time of the publication of this presentation. The Company has no contractual relationship, nor have we received any compensation from any of the companies listed in this research report.

## **Analyst Industry/Sector Views**

Positive (+): The analyst expects the performance of his industry/sector coverage universe over the next 6-18 months to be attractive vs. the relevant broad market benchmark, being the S&P 500 for North America.

Neutral (N): The analyst expects the performance of his or her industry/sector coverage universe over the next 6-18 months to be in line with the relevant broad market benchmark, being the S&P 500 for North America.

Negative (-): The analyst expects his or her industry coverage universe over the next 6-18 months to underperform vs. the relevant broad market benchmark, being the S&P 500 for North America.

## **General Disclosures**

FS Insight is an independent research company and is not a registered investment advisor and is not acting as a broker dealer under any federal or state securities laws. FS Insight is a member of IRC Securities’ Research Prime Services Platform. IRC Securities is a FINRA registered broker-dealer that is focused on supporting the independent research industry. Certain personnel of FS Insight (i.e. Research Analysts) are registered representatives of IRC Securities, a FINRA member firm registered as a broker-dealer with the Securities and Exchange Commission and certain state securities regulators. As registered representatives and independent contractors of IRC Securities, such personnel may receive commissions paid to or shared with IRC Securities for transactions placed by FS Insight clients directly with IRC Securities or with securities firms that may share commissions with IRC Securities in accordance with applicable SEC and FINRA requirements. IRC Securities does not distribute the research of FS Insight , which is available to select institutional clients that have engaged FS Insight .

As registered representatives of IRC Securities our analysts must follow IRC Securities’ Written Supervisory Procedures. Notable compliance policies include (1) prohibition of insider trading or the facilitation thereof, (2) maintaining client confidentiality, (3) archival of electronic communications, and (4) appropriate use of electronic communications, amongst other compliance related policies.

FS Insight does not have the same conflicts that traditional sell-side research organizations have because FS Insight (1) does not conduct any investment banking activities, (2) does not manage any investment funds, and (3) our clients are only institutional investors.

This research is for the clients of FS Insight only. Additional information is available upon request. Information has been obtained from sources believed to be reliable but FS Insight does not warrant its completeness or accuracy except with respect to any disclosures relative to FS Insight and the analyst’s involvement (if any) with any of the subject companies of the research. All pricing is as of the market close for the securities discussed, unless otherwise stated. Opinions and estimates constitute our judgment as of the date of this material and are subject to change without notice. Past performance is not indicative of future results. This material is not intended as an offer or solicitation for the purchase or sale of any financial instrument. The opinions and recommendations herein do not take into account individual client circumstances, risk tolerance, objectives, or needs and are not intended as recommendations of particular securities, financial instruments or strategies. The recipient of this report must make its own independent decision regarding any securities or financial instruments mentioned herein. Except in circumstances where FS Insight expressly agrees otherwise in writing, FS Insight is not acting as a municipal advisor and the opinions or views contained herein are not intended to be, and do not constitute, advice, including within the meaning of Section 15B of the Securities Exchange Act of 1934. All research reports are disseminated and available to all clients simultaneously through electronic publication to our internal client website, FS Insight .com. Not all research content is redistributed to our clients or made available to third-party aggregators or the media. Please contact your sales representative if you would like to receive any of our research publications.

**Copyright 2020 FS Insight LLC. All rights reserved. No part of this material may be reprinted, sold or redistributed without the prior written consent of FS Insight LLC.**