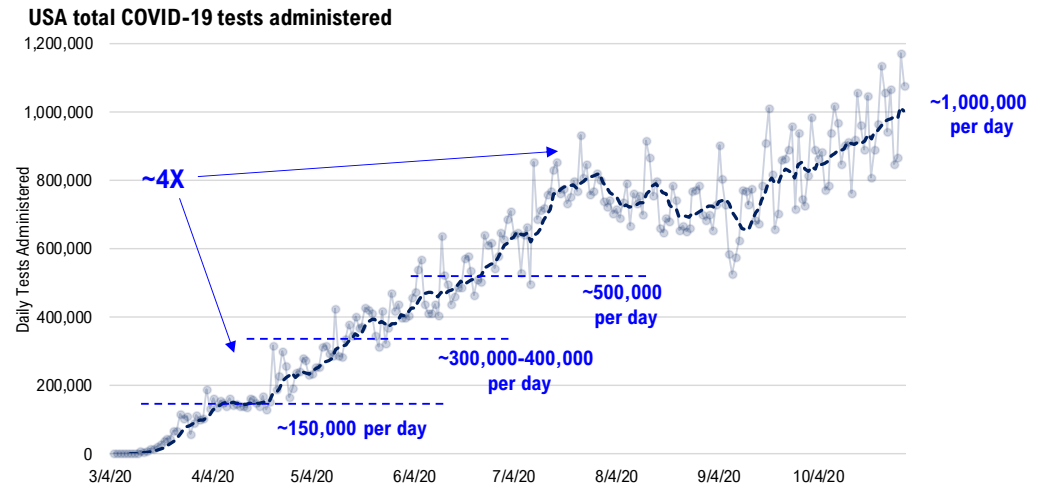
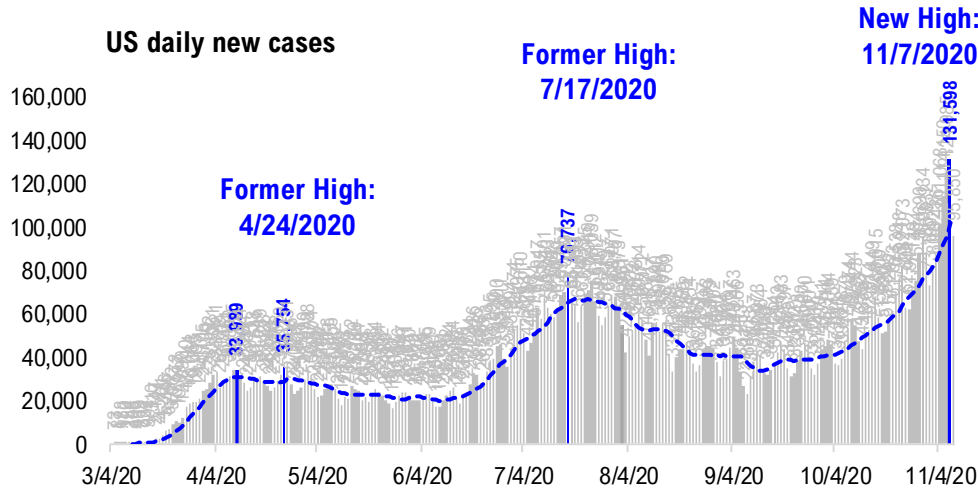


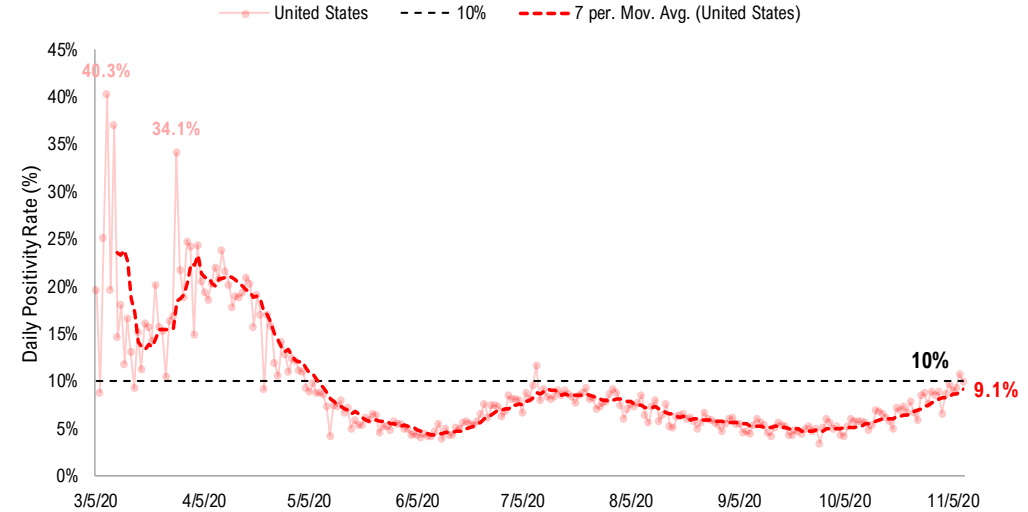
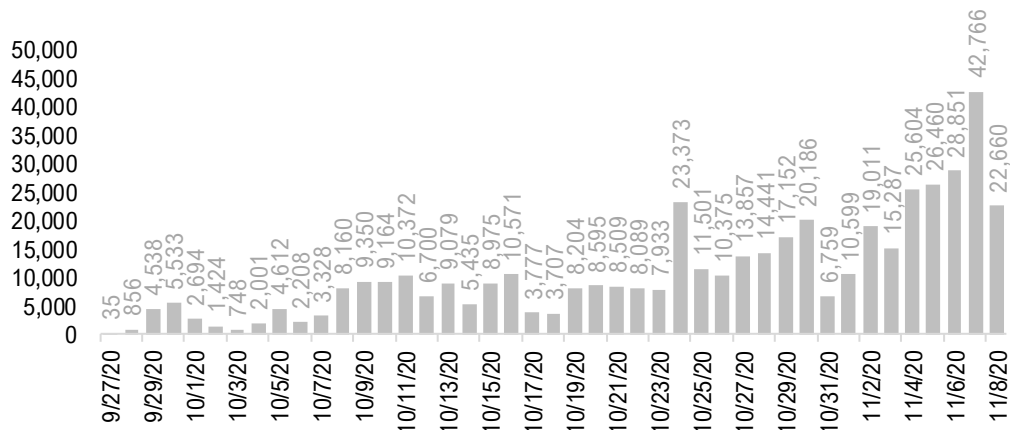
# FSInsight Daily COVID-19 Chartbook



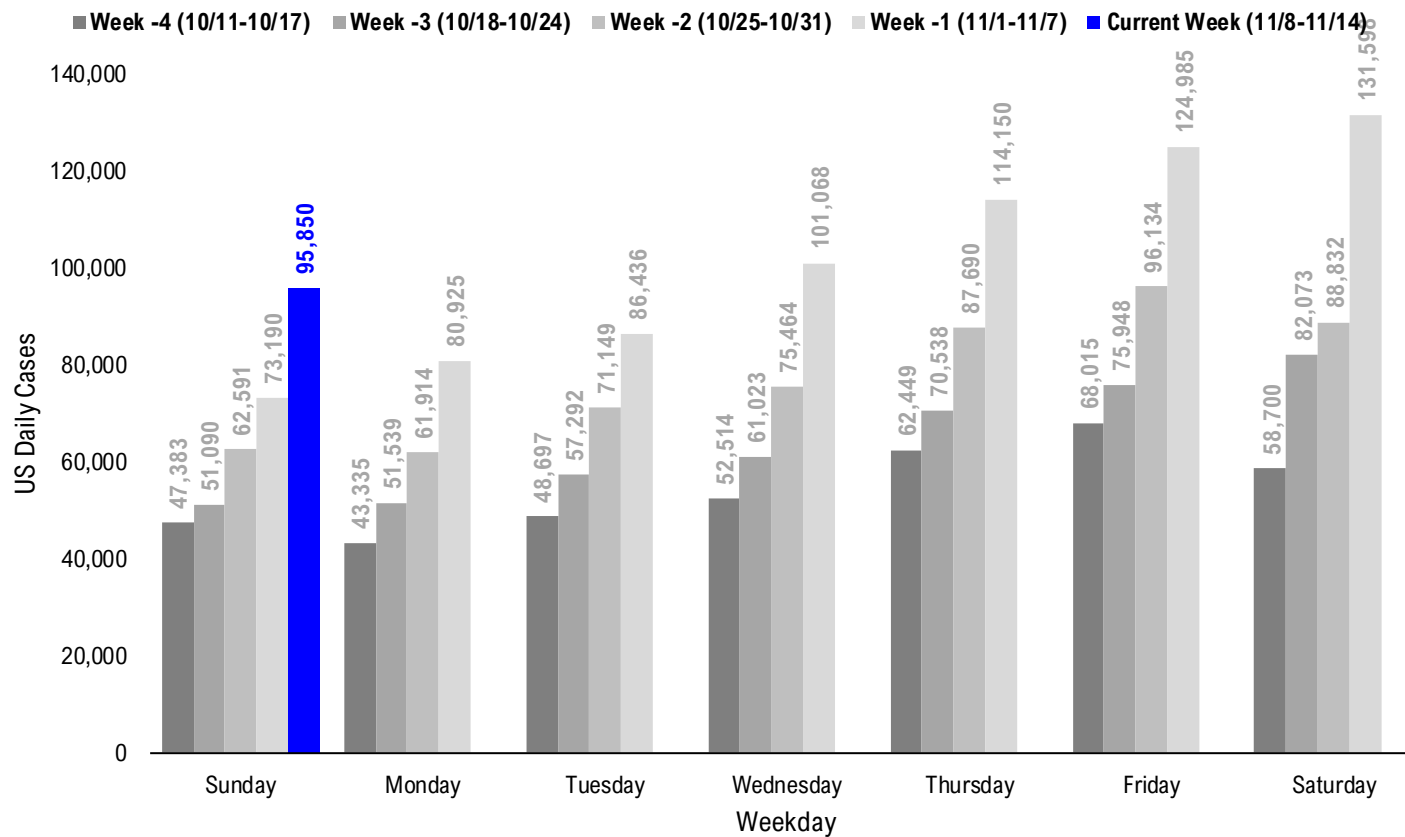
# #1: USA COVID-19 Situation at a Glance...



### US daily new cases rolling 7D delta



# #2: USA COVID-19 Daily Cases Weekday Seasonality (Past 4 Weeks) ...



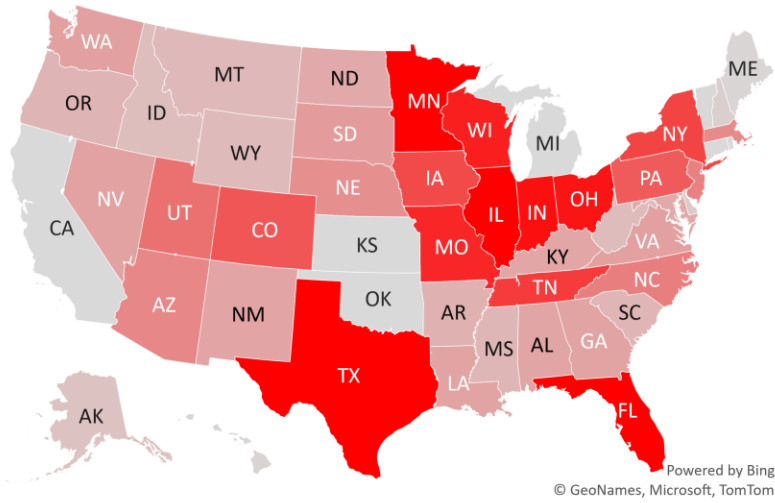
# #3: USA State COVID-19 Situation at a Glance...

	Sorted Daily Cases		Daily Cases (3D avg) per 1mm residents				Since Peak		Hospitalization	
	% US Pop	% US GDP	11/8	7D Delta	11/8	7D Delta	# Days	% Decline in Daily Cases	7D Net Hospitalization	7D Net Hospitalization / 7D New Cases
United States	100%	100%	95.850	+22.660	358	+96	1	-5%	9.217	1.3%
<b>States:</b>										
1 Illinois	3.8%	4.2%	10,009	+3,029	901	+286	0	0%	1,009	1.6%
2 Florida	6.5%	5.0%	6,820	+1,955	256	+58	118	-57%	409	1.1%
3 Minnesota	1.7%	1.8%	5,908	+3,708	946	+451	0	0%	300	1.0%
4 Texas	8.7%	8.8%	5,404	+1,293	233	+39	114	-44%	389	0.8%
5 Indiana	2.0%	1.8%	4,652	+1,902	703	+239	0	0%	338	1.2%
6 Ohio	3.5%	3.3%	4,541	+1,238	431	+144	1	-3%	599	1.9%
7 Wisconsin	1.8%	1.6%	4,280	+787	1001	+207	1	-9%	348	0.9%
8 Missouri	1.8%	1.5%	4,131	+1,782	685	+260	0	0%	316	1.3%
9 Tennessee	2.1%	1.8%	3,636	+2,882	492	+270	0	0%	219	1.1%
10 New York	5.9%	8.1%	3,428	+1,173	175	+63	212	-68%	271	1.4%
11 Iowa	1.0%	0.9%	3,313	+1,101	1036	+298	1	-6%	274	1.5%
12 Colorado	1.7%	1.8%	3,017	+457	578	+121	1	-3%	299	1.4%
13 Pennsylvania	3.9%	3.8%	2,909	+1,000	269	+85	0	0%	468	2.2%
14 Utah	1.0%	0.9%	2,386	+532	866	+256	1	-5%	82	0.5%
15 North Carolina	3.2%	2.7%	2,094	+37	244	+0	8	-10%	25	0.2%
16 New Jersey	2.7%	3.0%	2,013	+270	277	+86	217	-38%	335	2.2%
17 Arizona	2.2%	1.7%	1,880	+353	297	+69	129	-50%	310	2.6%
18 Massachusetts	2.1%	2.8%	1,823	+692	302	+101	197	-40%	-45	(0.4%)
19 Nebraska	0.6%	0.6%	1,702	+615	1121	+400	1	-2%	148	1.3%
20 South Dakota	0.3%	0.3%	1,428	+96	1603	-27	7	-2%	125	1.5%
21 Washington	2.3%	2.7%	1,320	+506	209	+89	0	0%	0	0.0%
22 Virginia	2.6%	2.6%	1,302	+100	194	+30	1	-1%	78	0.8%
23 Nevada	0.9%	0.8%	1,276	+560	505	+188	0	0%	241	2.8%
24 Georgia	3.2%	2.9%	1,253	+61	148	-13	106	-63%	126	1.1%
25 Louisiana	1.4%	1.3%	1,251	+187	151	+44	110	-74%	24	0.5%
26 New Mexico	0.6%	0.5%	1,210	+468	599	+229	0	0%	72	0.9%
27 Alabama	1.5%	1.1%	1,205	+351	308	+43	106	-28%	93	1.0%
28 Kentucky	1.3%	1.0%	1,177	-246	415	+17	1	-16%	189	1.5%

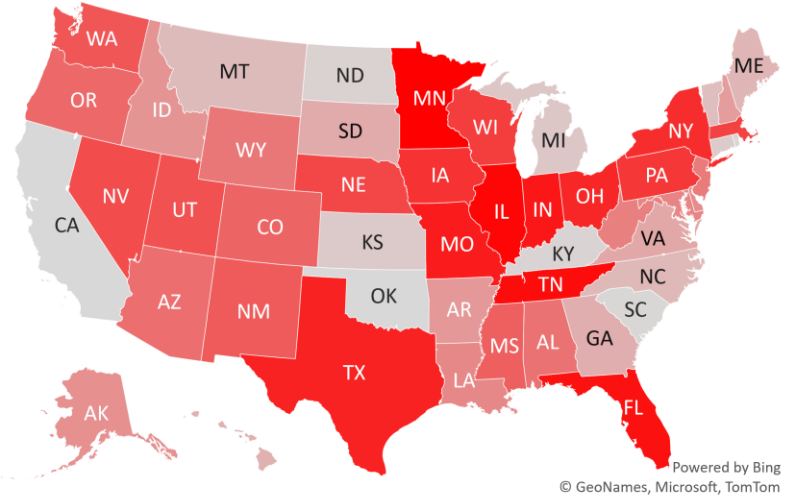
	Sorted Daily Cases		Daily Cases (3D avg) per 1mm residents				Since Peak		Hospitalization	
	% US Pop	% US GDP	11/8	7D Delta	11/8	7D Delta	# Days	% Decline in Daily Cases	7D Net Hospitalization	7D Net Hospitalization / 7D New Cases
United States	100%	100%	95.850	+22.660	358	+96	1	-5%	9.217	1.3%
<b>States:</b>										
29 North Dakota	0.2%	0.3%	1,101	-26	1954	+243	1	-9%	130	1.4%
30 Maryland	1.8%	2.0%	1,081	+217	222	+70	1	-3%	132	1.7%
31 Arkansas	0.9%	0.6%	916	+159	402	+109	1	-6%	-22	(0.3%)
32 Oregon	1.3%	1.2%	861	+353	206	+77	0	0%	55	1.1%
33 South Carolina	1.6%	1.1%	839	-578	245	+33	99	-54%	-55	(0.8%)
34 Mississippi	0.9%	0.6%	804	+464	314	+100	101	-39%	37	0.6%
35 Montana	0.3%	0.2%	731	+37	846	+22	1	-9%	82	1.3%
36 Wyoming	0.2%	0.2%	713	+288	1095	+395	0	0%	31	0.9%
37 West Virginia	0.5%	0.4%	662	+239	345	+82	0	0%	48	1.4%
38 Idaho	0.5%	0.4%	649	+169	631	+194	1	-15%	57	0.7%
39 Alaska	0.2%	0.3%	518	+170	749	+218	0	0%	21	0.7%
40 Puerto Rico	1.0%	0.5%	509	+106	198	+66	14	-2%	89	2.6%
41 Delaware	0.3%	0.4%	345	+170	291	+95	194	-15%	14	0.9%
42 New Hampshire	0.4%	0.4%	247	+117	167	+57	0	0%	17	1.3%
43 Hawaii	0.4%	0.5%	128	+46	88	+31	71	-57%	17	2.1%
44 Guam	0.0%	0.0%	120	+111	460	+177	73	-30%	-27	(5.3%)
45 District of Columbia	0.2%	0.7%	110	+7	151	+11	189	-54%	-24	(3.3%)
46 Maine	0.4%	0.3%	90	+43	107	+46	1	-18%	31	3.2%
47 Vermont	0.2%	0.2%	43	+26	48	+19	217	-48%	2	1.0%
48 U.S. Virgin Islands	0.0%	0.0%	15	+15	53	-19	79	-87%	0	0.0%
49 Rhode Island	0.3%	0.3%	0	-480	198	-298	2	-66%	35	1.4%
50 Oklahoma	1.2%	1.0%	0	-1,349	538	+208	1	-25%	193	1.6%
51 Northern Mariana	0.0%	0.0%	0	-4	12	-12	21	-78%	0	0.0%
52 Michigan	3.0%	2.6%	0	+0	333	+101	1	-36%	697	2.4%
53 Kansas	0.9%	0.8%	0	+0	620	+261	2	-36%	181	1.5%
54 Connecticut	1.1%	1.3%	0	+0	100	+28	200	-76%	73	1.1%
55 California	11.9%	14.6%	0	-4,529	104	-11	107	-64%	361	1.2%
56 American Samoa	0.0%	0.0%	0	+0	0	+0	0	0%	0	

# #4: USA COVID-19 Heat Map...

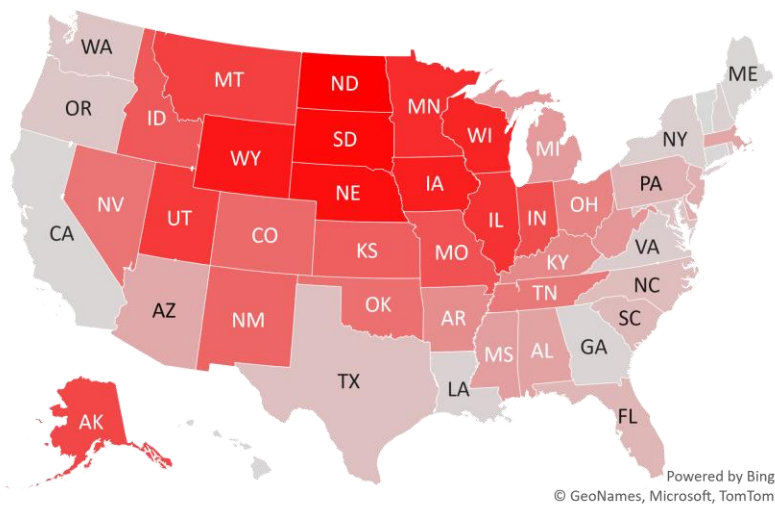
### Daily Case Increases



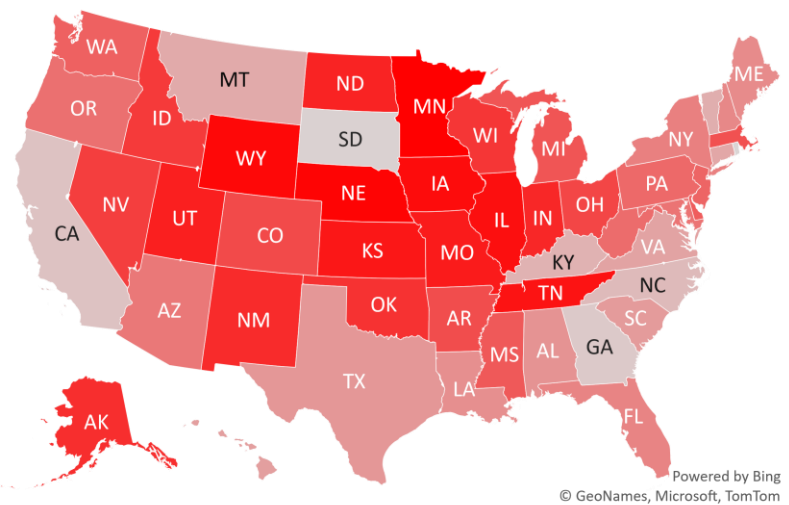
### 7D Delta in Daily New Cases



### Daily Case Increases per 1mm Resident (3D Avg)



### 7D Delta in Daily New Cases per 1mm (3D Avg)





# #6: US New Cases by States... (sorted by today's new cases)

*Sorted*  
7D Ago      Last 3-day Trend

*OK and CA didn't report COVID stats on Sunday (11/8)...*

	11/1/20	11/6/20	11/7/20	11/8/20	vs 7D ago
United States	73,190	124,985	131,598	95,850	+22,660
<b>States:</b>					
Illinois	6,980	11,790	12,438	10,009	<--higher
Florida	4,865	5,245	4,452	6,820	<--higher
Minnesota	2,200	5,442	4,647	5,908	<--higher
Texas	4,111	7,221	7,677	5,404	<--higher
Indiana	2,750	4,647	4,899	4,652	<--higher
Ohio	3,303	5,008	5,549	4,541	<--higher
Wisconsin	3,493	6,141	7,065	4,280	<--higher
Missouri	2,349	3,931	4,559	4,131	<--higher
Tennessee	754	1,373	5,071	3,636	<--higher
New York	2,255	3,209	3,587	3,428	<--higher
Iowa	2,212	2,778	3,718	3,313	<--higher
Colorado	2,560	3,463	3,498	3,017	
Pennsylvania	1,909	3,384	4,035	2,909	<--higher
Utah	1,854	2,987	2,956	2,386	<--higher
North Carolina	2,057	2,908	2,676	2,094	
New Jersey	1,743	2,161	3,202	2,013	
Arizona	1,527	1,996	2,620	1,880	<--higher
Massachusetts	1,131	2,113	2,302	1,823	<--higher
Nebraska	1,087	2,124	2,681	1,702	<--higher
South Dakota	1,332	1,488	1,337	1,428	
Washington	814	1,691	1,770	1,320	<--higher
Virginia	1,202	1,568	2,103	1,302	
Nevada	716	1,562	1,824	1,276	<--higher
Georgia	1,192	1,738	1,719	1,253	
Louisiana	1,064	855	0	1,251	
New Mexico	742	1,284	1,277	1,210	<--higher
Alabama	854	1,556	1,768	1,205	<--higher
Kentucky	1,423	2,228	2,156	1,177	

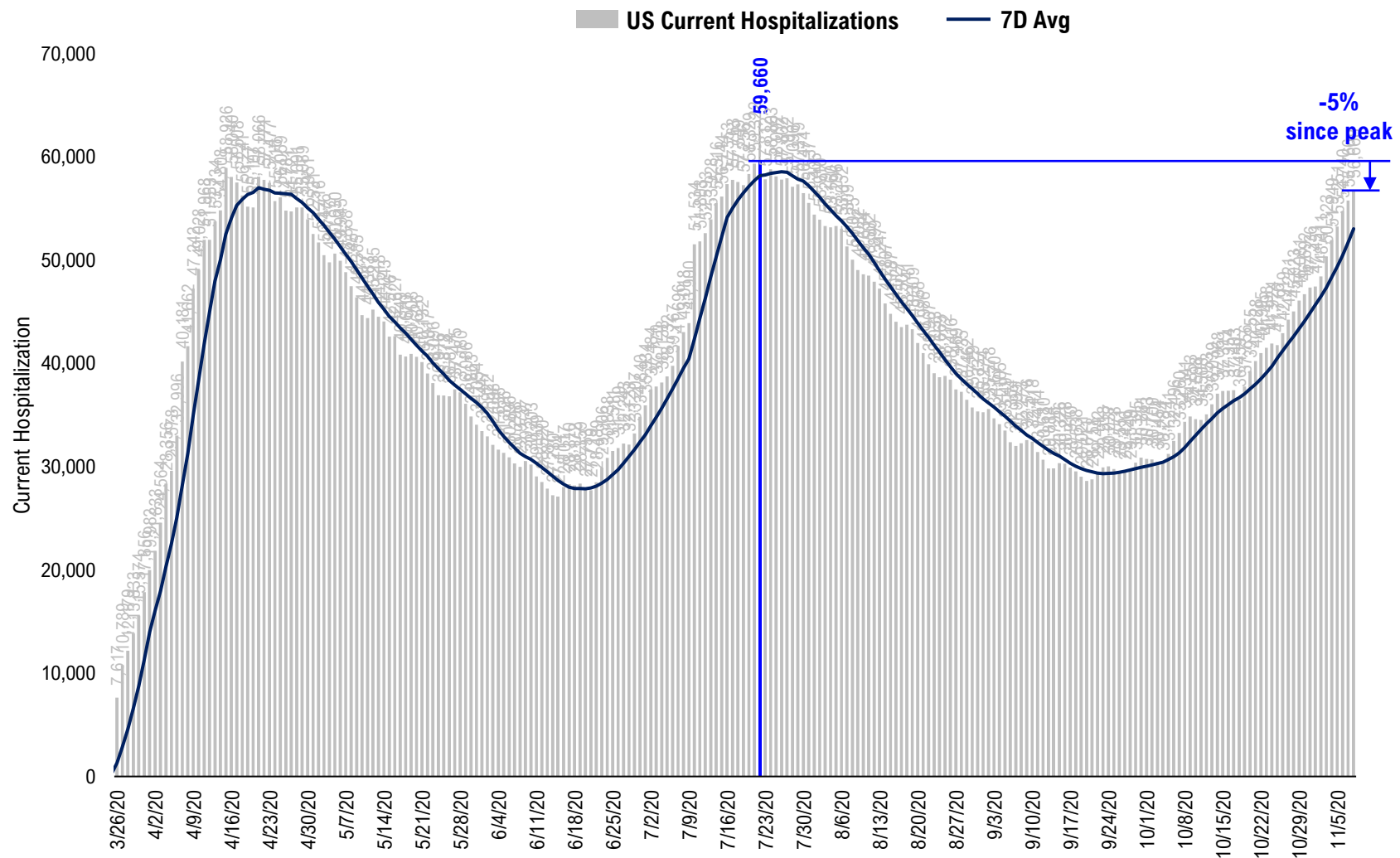
*Sorted*  
7D Ago      Last 3-day Trend

*OK and CA didn't report COVID stats on Sunday (11/8)...*

	11/1/20	11/6/20	11/7/20	11/8/20	vs 7D ago
United States	73,190	124,985	131,598	95,850	+22,660
<b>States:</b>					
North Dakota	1,127	1,765	1,602	1,101	
Maryland	864	1,541	1,410	1,081	<--higher
Arkansas	757	1,446	1,278	916	<--higher
Oregon	508	769	979	861	<--higher
South Carolina	1,417	1,161	1,782	839	
Mississippi	340	967	1,031	804	<--higher
Montana	694	979	1,001	731	
Wyoming	425	996	192	713	<--higher
West Virginia	423	540	655	662	<--higher
Idaho	480	1,330	1,403	649	<--higher
Alaska	348	525	601	518	<--higher
Puerto Rico	403	803	586	509	<--higher
Delaware	175	282	223	345	<--higher
New Hampshire	130	204	229	247	<--higher
Hawaii	82	119	128	128	<--higher
Guam	9	73	36	120	<--higher
District of Columbia	103	110	99	110	
Maine	47	184	159	90	<--higher
Vermont	17	24	23	43	<--higher
U.S. Virgin Islands	0	2	0	15	
Rhode Island	480	630	0	0	
Oklahoma	1,349	1,878	4,507	0	
Northern Mariana Islands	4	2	0	0	
Michigan	0	3,763	6,225	0	
Kansas	0	5,418	0	0	
Connecticut	0	1,065	0	0	
California	4,529	6,518	5,863	0	
American Samoa	0	0	0	0	

# #7: US Daily Hospitalizations...

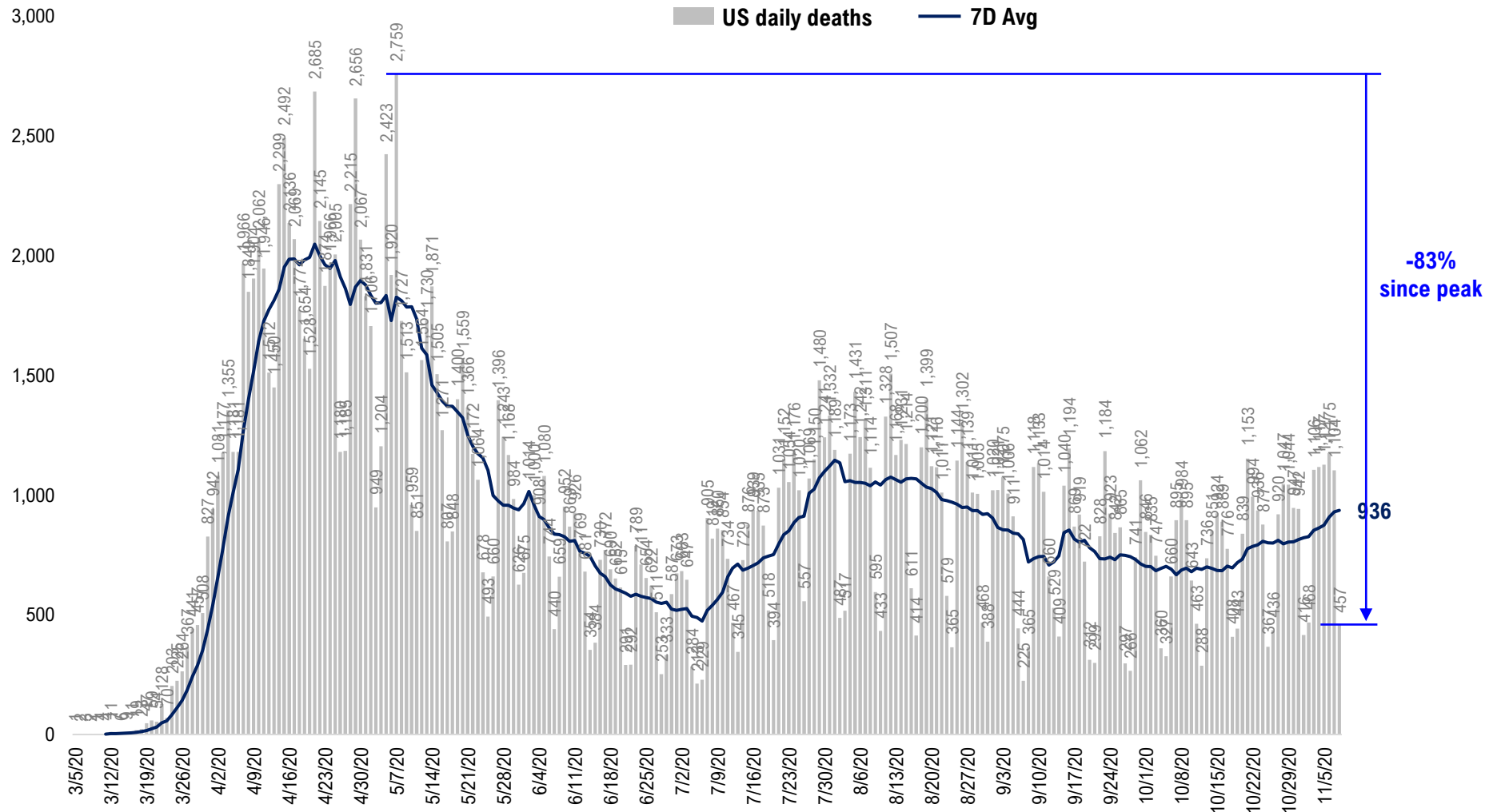
## US Net Hospitalizations (aggregate of 50 states + Washington, D.C.)



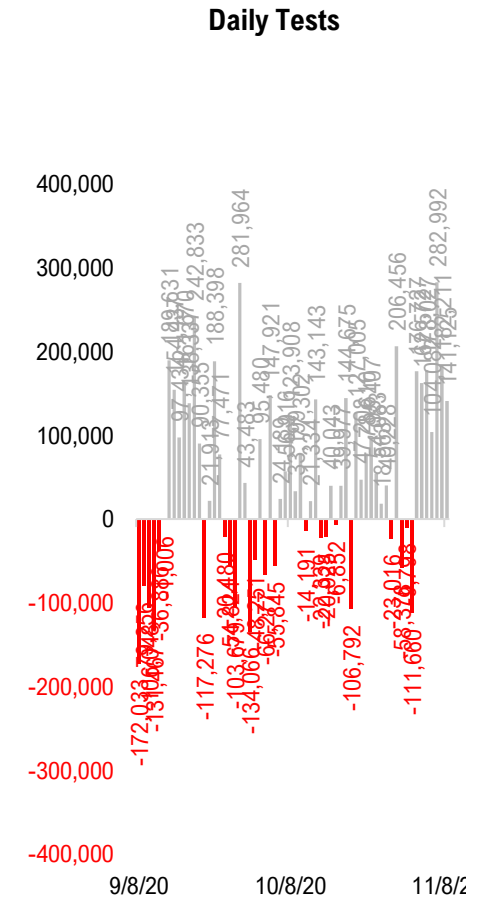
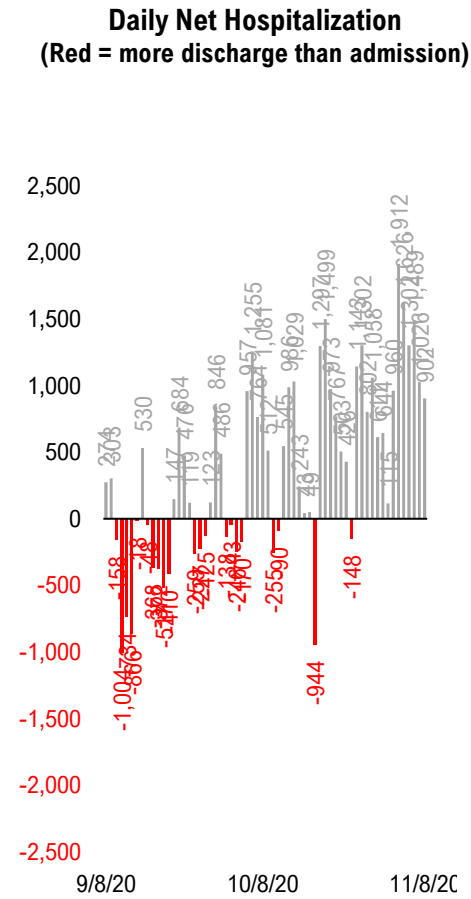
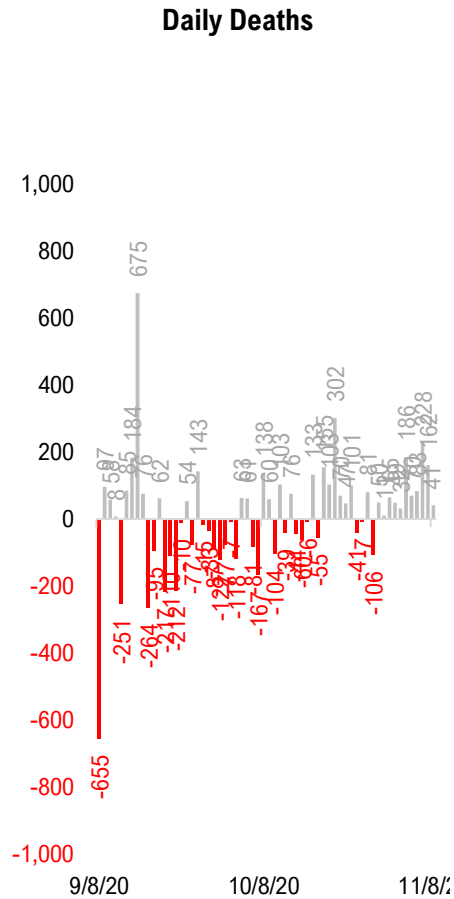
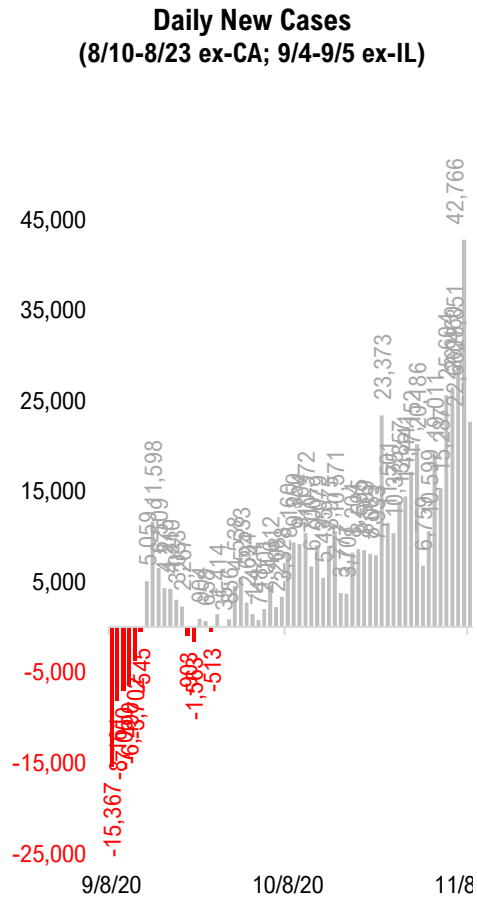


# #8: US Daily New Fatalities...

## US daily COVID-19 Fatalities

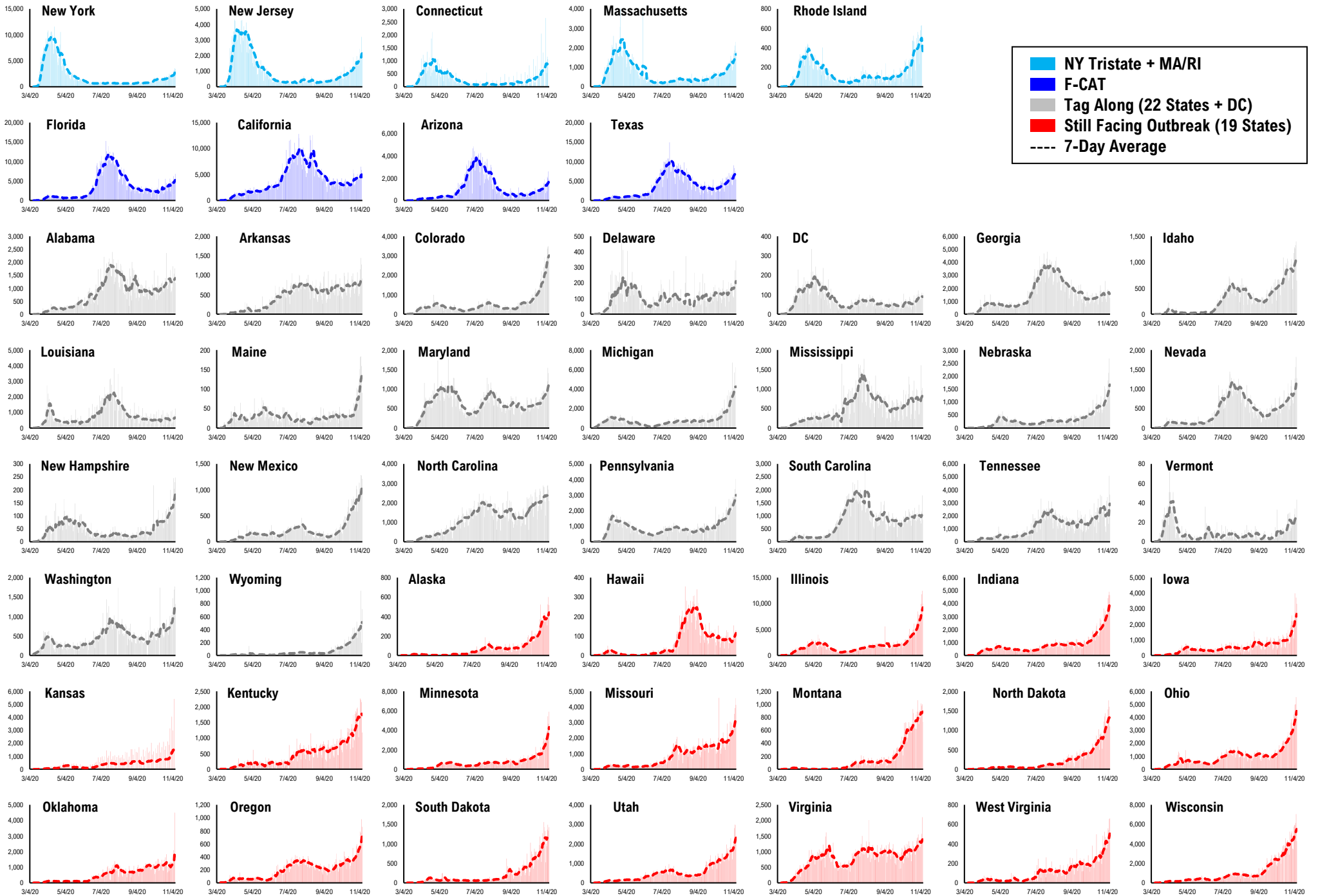


# #9: Rolling 7-Day Change in the Key Metrics... (Past 8 Weeks)

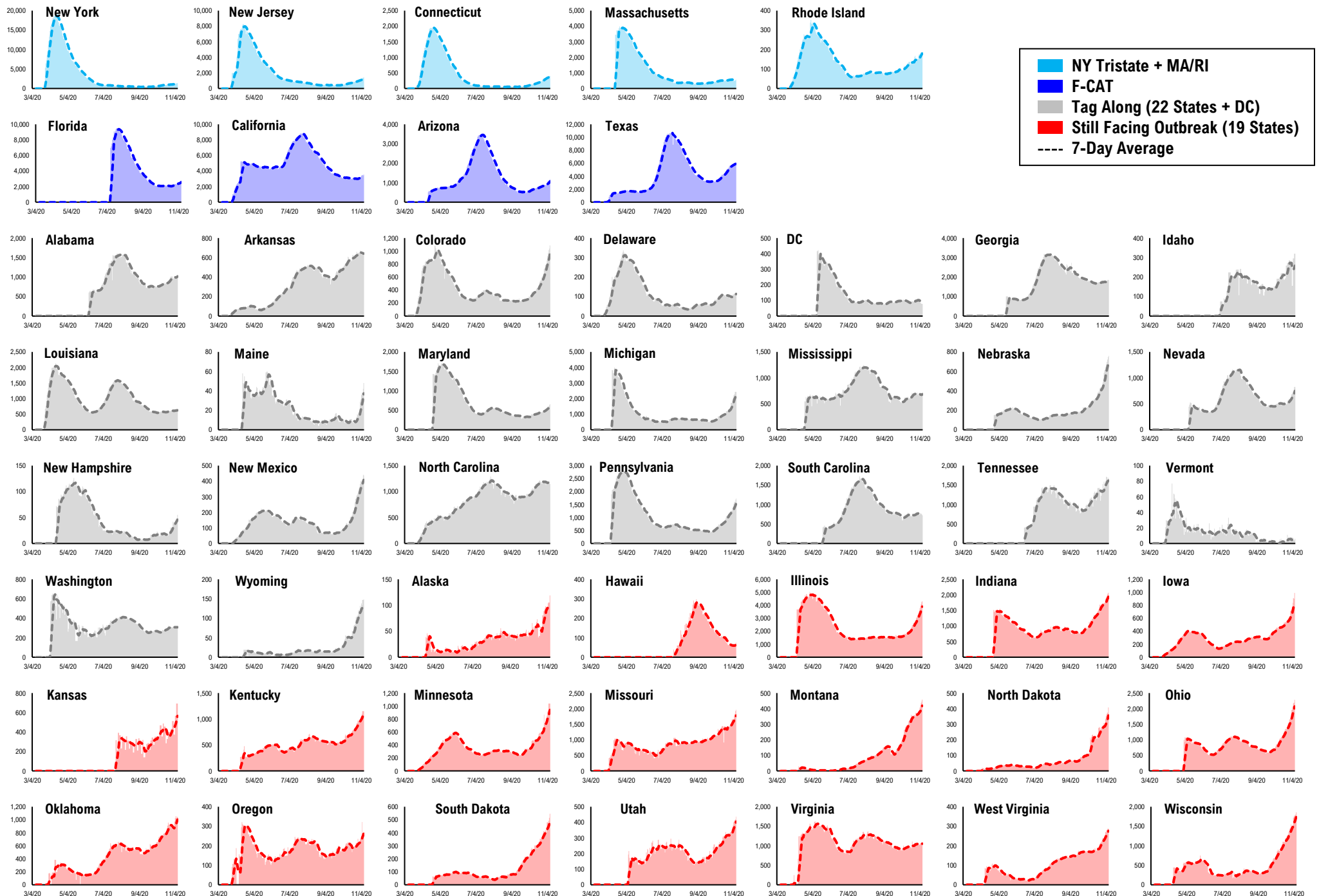


\* Ignored California between 8/10 and 8/23, due to its data glitch caused 300,000-case backlog  
Source: Fundstrat, COVID-19 Tracking Project, State Department of Health

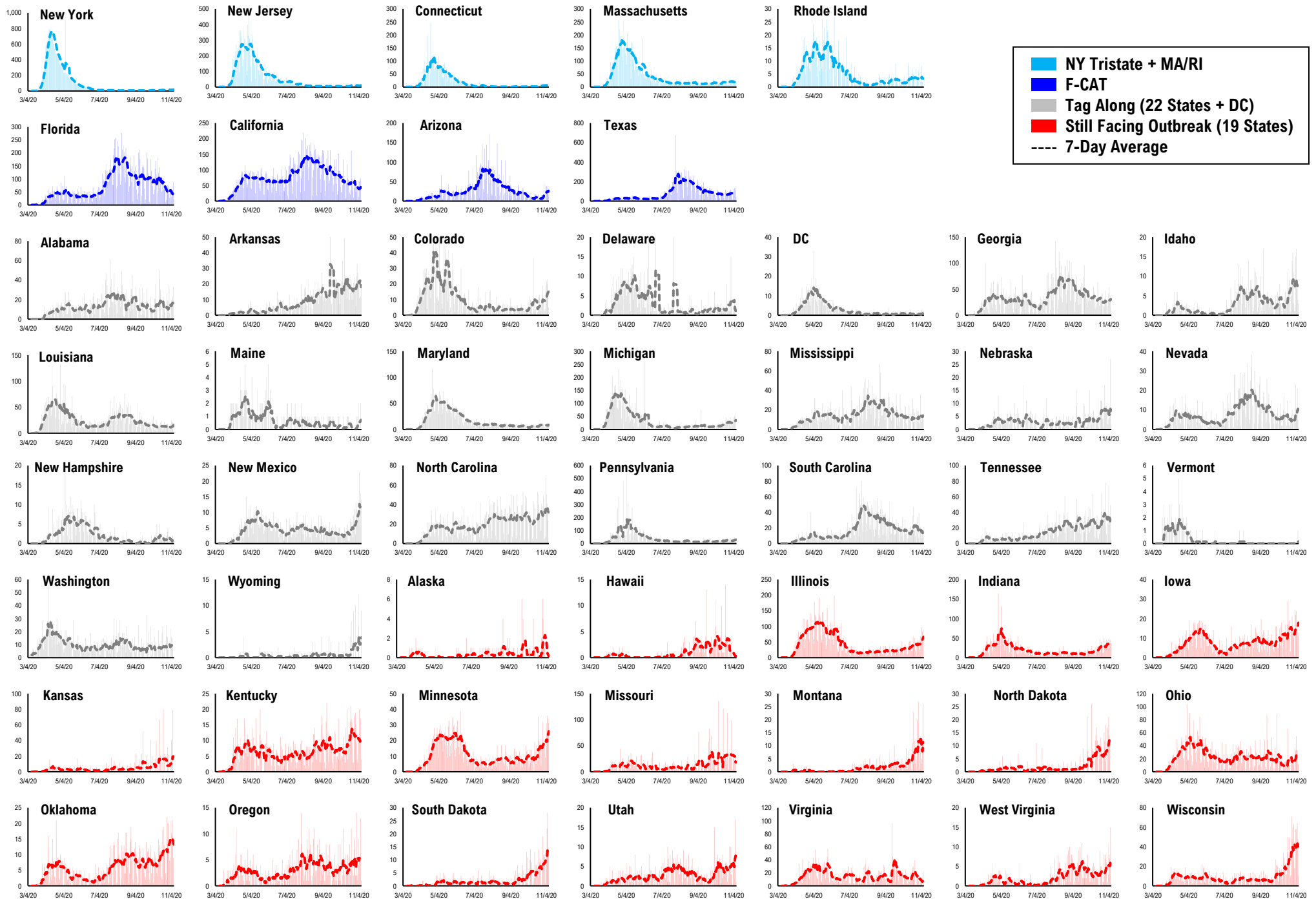
# #10: Daily New Cases by States...



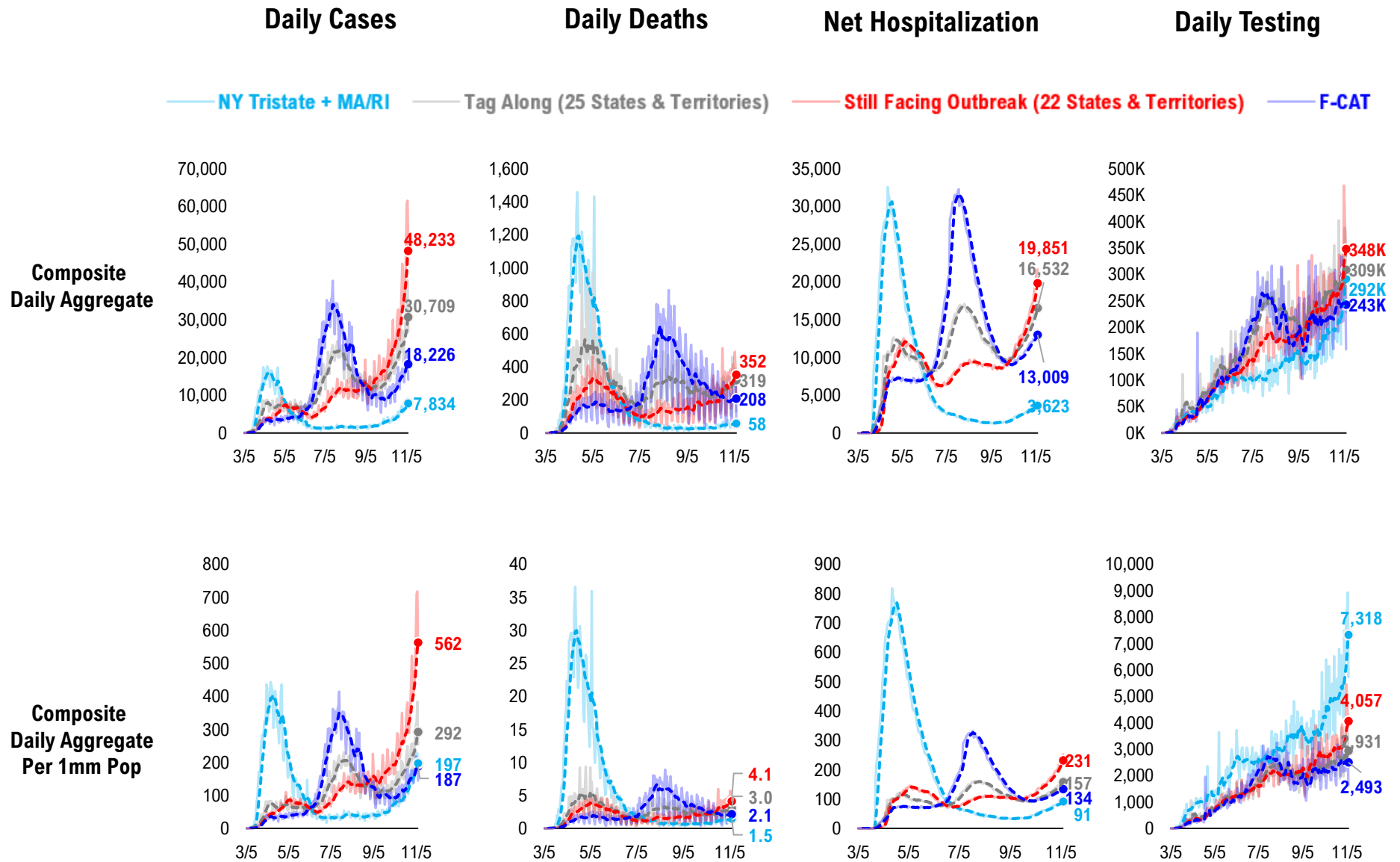
# #11: Current Hospitalizations by States...



# #12: Daily New Deaths by States...

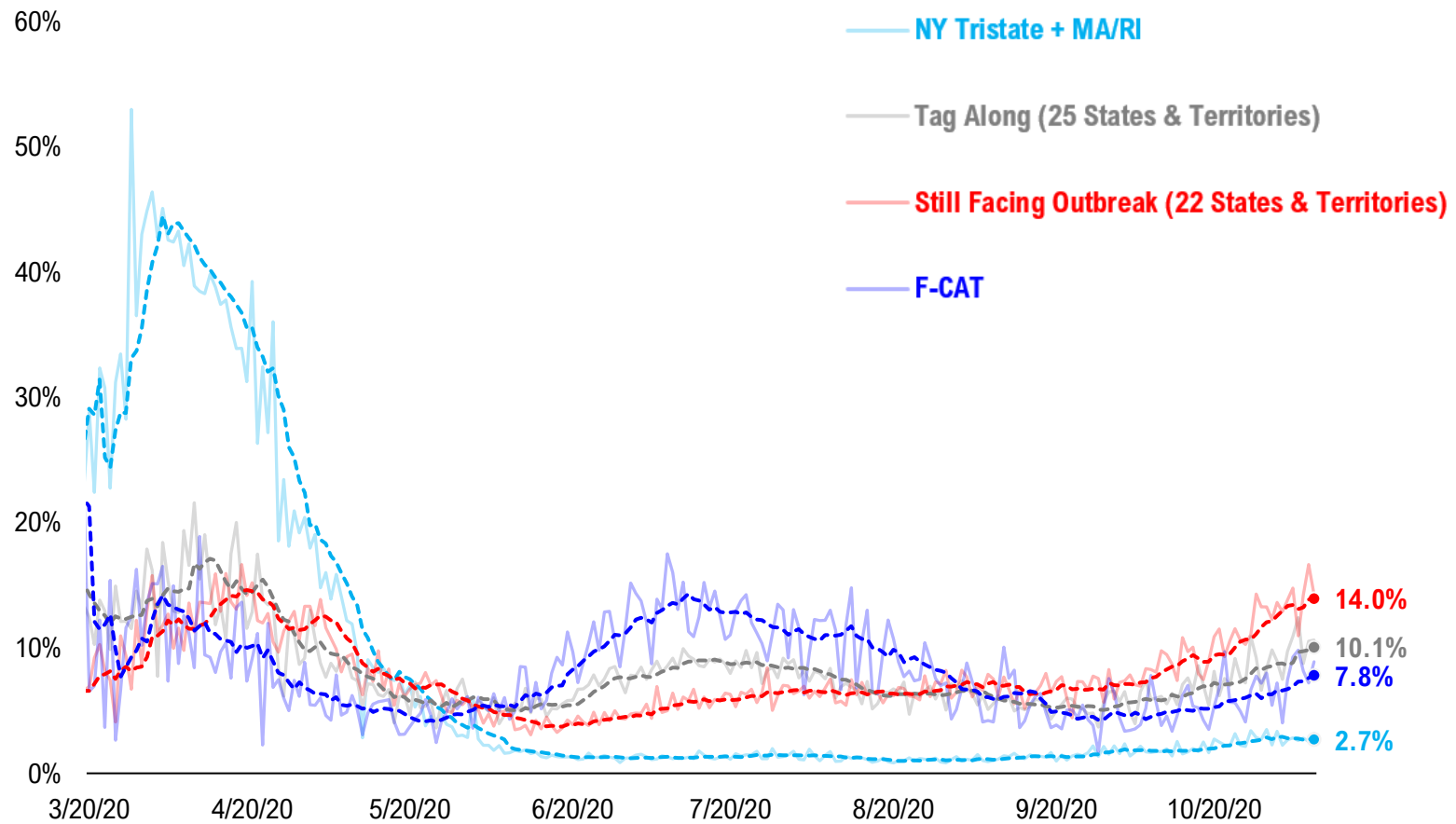


# #13: State COVID-19 situation by Tier...

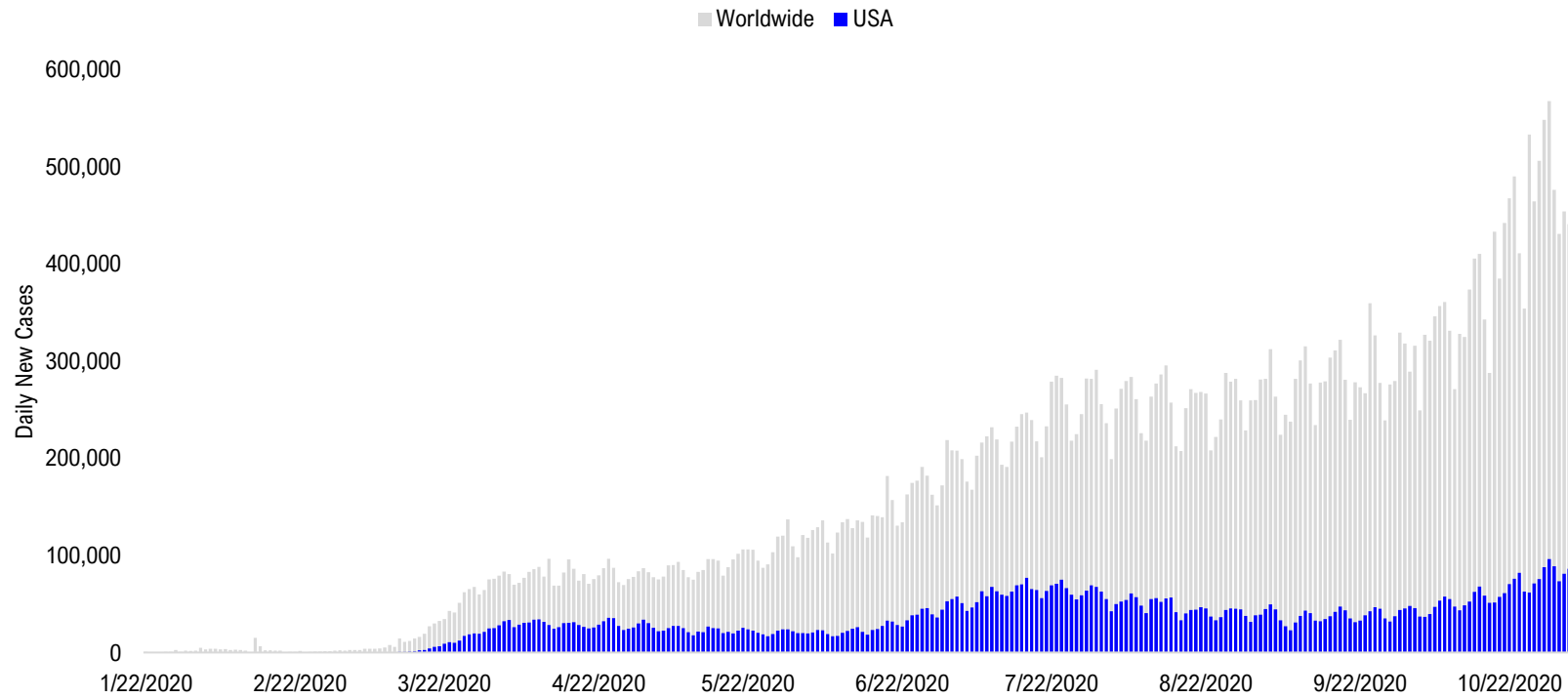


# #14: State COVID-19 Daily Positivity Rate by Tier...

## Composite Daily Positivity Rate



# #15: Global COVID-19 Situation at a Glance...



Jun 19	Jul 3	Jul 17	Jul 31	Aug 14	Aug 28	Sep 11	Sep 25	Oct 9	Oct 23	Nov 4
Latin America 58,570	Latin America 72,231	Latin America 72,602	Latin America 97,308	Latin America 100,636	Latin America 88,255	Pakistan + India + Bangladesh 98,888	Pakistan + India + Bangladesh 88,225	Europe 112,040	Europe 223,901	Europe 290,708
US + Canada 28,473	US + Canada 55,408	US + Canada 72,365	US + Canada 67,272	Pakistan + India + Bangladesh 68,924	Pakistan + India + Bangladesh 82,644	Latin America 80,841	Latin America 76,712	Pakistan + India + Bangladesh 76,149	US + Canada 71,887	US + Canada 93,087
Pakistan + India + Bangladesh 22,981	Pakistan + India + Bangladesh 27,389	Pakistan + India + Bangladesh 39,450	Pakistan + India + Bangladesh 58,625	US + Canada 54,914	US + Canada 45,273	Europe 47,433	Europe 67,915	Latin America 69,822	Latin America 69,390	Pakistan + India + Bangladesh 47,822
Europe 18,534	Europe 15,950	Africa 19,290	Europe 20,929	Europe 28,225	Europe 35,965	US + Canada 37,795	US + Canada 43,790	US + Canada 54,955	Pakistan + India + Bangladesh 56,907	Latin America 47,474
Africa 8,930	Africa 14,218	Europe 17,320	Africa 17,999	Africa 10,680	Asia ex- India+Pakistan 9,999	Asia ex- India+Pakistan 10,612	Asia ex- India+Pakistan 10,726	Asia ex- India+Pakistan 13,687	Asia ex- India+Pakistan 15,049	Asia ex- India+Pakistan 12,658
Asia ex- India+Pakistan 3,314	Asia ex- India+Pakistan 12,006	Asia ex- India+Pakistan 7,321	Asia ex- India+Pakistan 10,630	Asia ex- India+Pakistan 10,512	Africa 8,468	Africa 8,309	Africa 8,247	Africa 9,966	Africa 10,615	Africa 10,822



# Disclosures

This research is for the clients of FS Insight only. For important disclosures and rating histories regarding sectors or companies that are the subject of this report, please contact your sales representative or FS Insight at 150 East 52nd Street, New York, NY, 10022 USA.

## **Analyst Certification (Reg AC)**

Thomas J. Lee, the research analyst denoted by an “AC” on the cover of this report, hereby certifies that all of the views expressed in this report accurately reflect his personal views, which have not been influenced by considerations of the firm’s business or client relationships.

Neither I, nor a member of my household is an officer, director, or advisory board member of the issuer(s) or has another significant affiliation with the issuer(s) that is/are the subject of this research report. There is a possibility that we will from time to time have long or short positions in, and buy or sell, the securities or derivatives, if any, referred to in this research

## **Conflicts of Interest**

This research contains the views, opinions and recommendations of FS Insight . As of the time of writing and publication of this presentation, FS Insight does not know of, or have reason to know of any material conflicts of interest at the time of the publication of this presentation. The Company has no contractual relationship, nor have we received any compensation from any of the companies listed in this research report.

## **Analyst Industry/Sector Views**

Positive (+): The analyst expects the performance of his industry/sector coverage universe over the next 6-18 months to be attractive vs. the relevant broad market benchmark, being the S&P 500 for North America.

Neutral (N): The analyst expects the performance of his or her industry/sector coverage universe over the next 6-18 months to be in line with the relevant broad market benchmark, being the S&P 500 for North America.

Negative (-): The analyst expects his or her industry coverage universe over the next 6-18 months to underperform vs. the relevant broad market benchmark, being the S&P 500 for North America.

## **General Disclosures**

FS Insight is an independent research company and is not a registered investment advisor and is not acting as a broker dealer under any federal or state securities laws. FS Insight is a member of IRC Securities’ Research Prime Services Platform. IRC Securities is a FINRA registered broker-dealer that is focused on supporting the independent research industry. Certain personnel of FS Insight (i.e. Research Analysts) are registered representatives of IRC Securities, a FINRA member firm registered as a broker-dealer with the Securities and Exchange Commission and certain state securities regulators. As registered representatives and independent contractors of IRC Securities, such personnel may receive commissions paid to or shared with IRC Securities for transactions placed by FS Insight clients directly with IRC Securities or with securities firms that may share commissions with IRC Securities in accordance with applicable SEC and FINRA requirements. IRC Securities does not distribute the research of FS Insight , which is available to select institutional clients that have engaged FS Insight .

As registered representatives of IRC Securities our analysts must follow IRC Securities’ Written Supervisory Procedures. Notable compliance policies include (1) prohibition of insider trading or the facilitation thereof, (2) maintaining client confidentiality, (3) archival of electronic communications, and (4) appropriate use of electronic communications, amongst other compliance related policies.

FS Insight does not have the same conflicts that traditional sell-side research organizations have because FS Insight (1) does not conduct any investment banking activities, (2) does not manage any investment funds, and (3) our clients are only institutional investors.

This research is for the clients of FS Insight only. Additional information is available upon request. Information has been obtained from sources believed to be reliable but FS Insight does not warrant its completeness or accuracy except with respect to any disclosures relative to FS Insight and the analyst’s involvement (if any) with any of the subject companies of the research. All pricing is as of the market close for the securities discussed, unless otherwise stated. Opinions and estimates constitute our judgment as of the date of this material and are subject to change without notice. Past performance is not indicative of future results. This material is not intended as an offer or solicitation for the purchase or sale of any financial instrument. The opinions and recommendations herein do not take into account individual client circumstances, risk tolerance, objectives, or needs and are not intended as recommendations of particular securities, financial instruments or strategies. The recipient of this report must make its own independent decision regarding any securities or financial instruments mentioned herein. Except in circumstances where FS Insight expressly agrees otherwise in writing, FS Insight is not acting as a municipal advisor and the opinions or views contained herein are not intended to be, and do not constitute, advice, including within the meaning of Section 15B of the Securities Exchange Act of 1934. All research reports are disseminated and available to all clients simultaneously through electronic publication to our internal client website, FS Insight .com. Not all research content is redistributed to our clients or made available to third-party aggregators or the media. Please contact your sales representative if you would like to receive any of our research publications.

**Copyright 2020 FS Insight LLC. All rights reserved. No part of this material may be reprinted, sold or redistributed without the prior written consent of FS Insight LLC.**