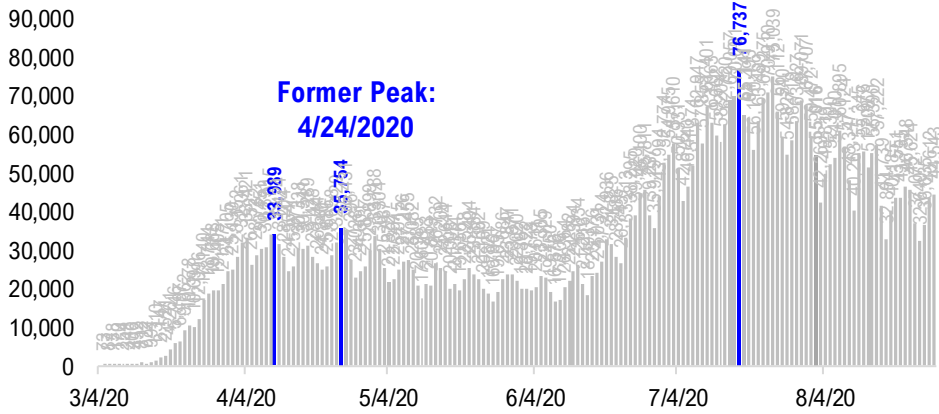


FSInsight Daily COVID-19 Chartbook

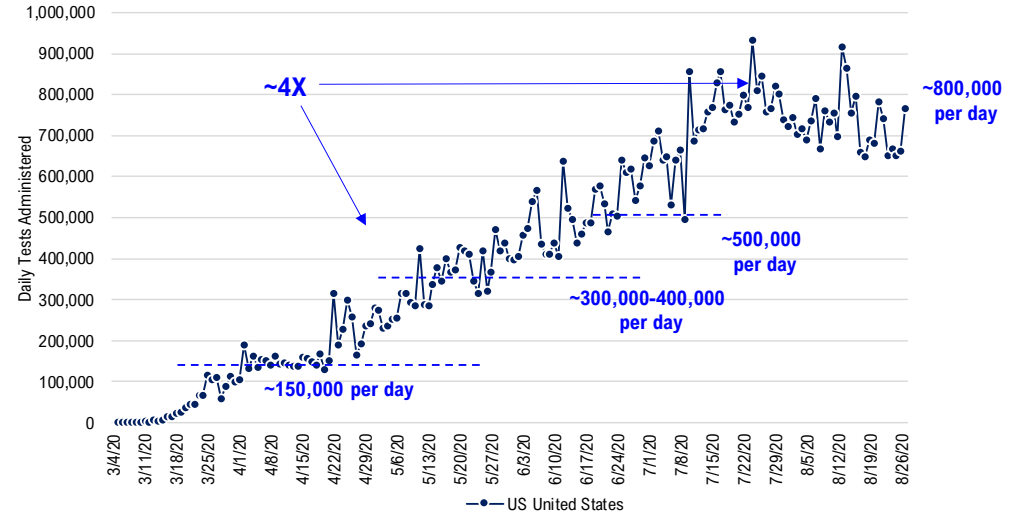


#1: USA COVID-19 Situation at a Glance...

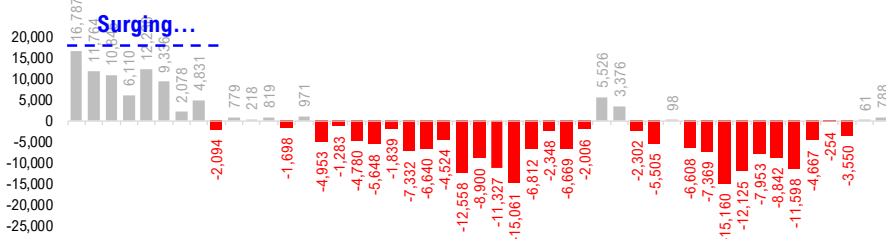
US daily new cases



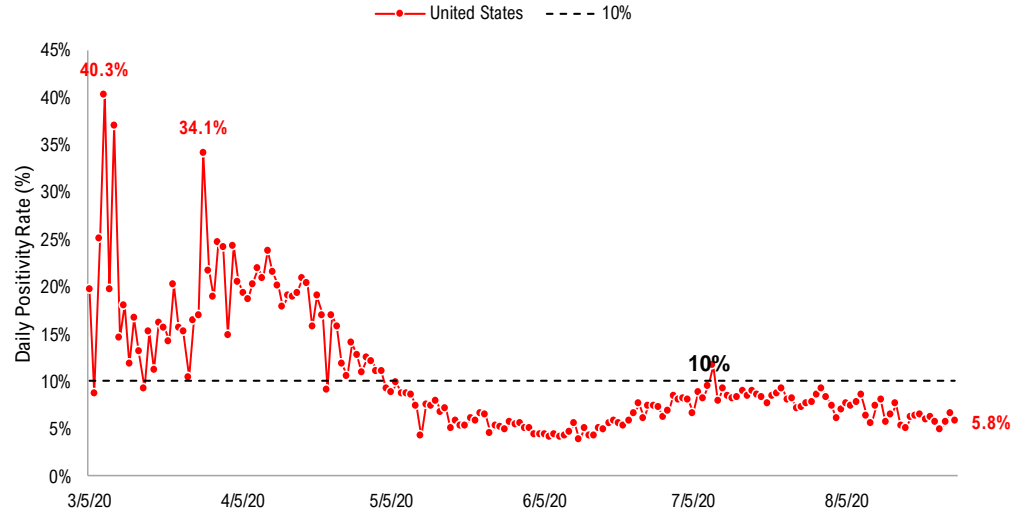
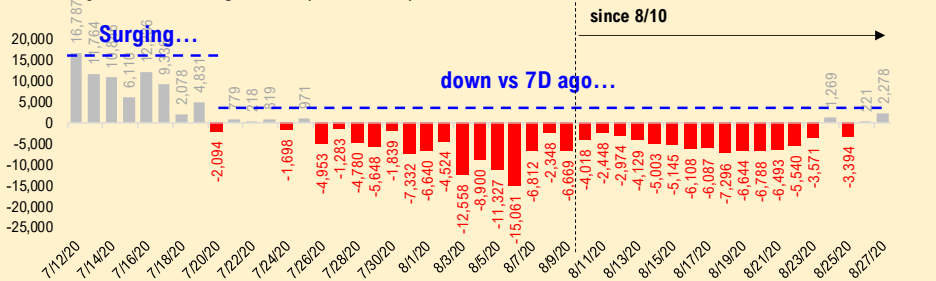
USA total COVID-19 tests administered



US daily new cases rolling 7D delta



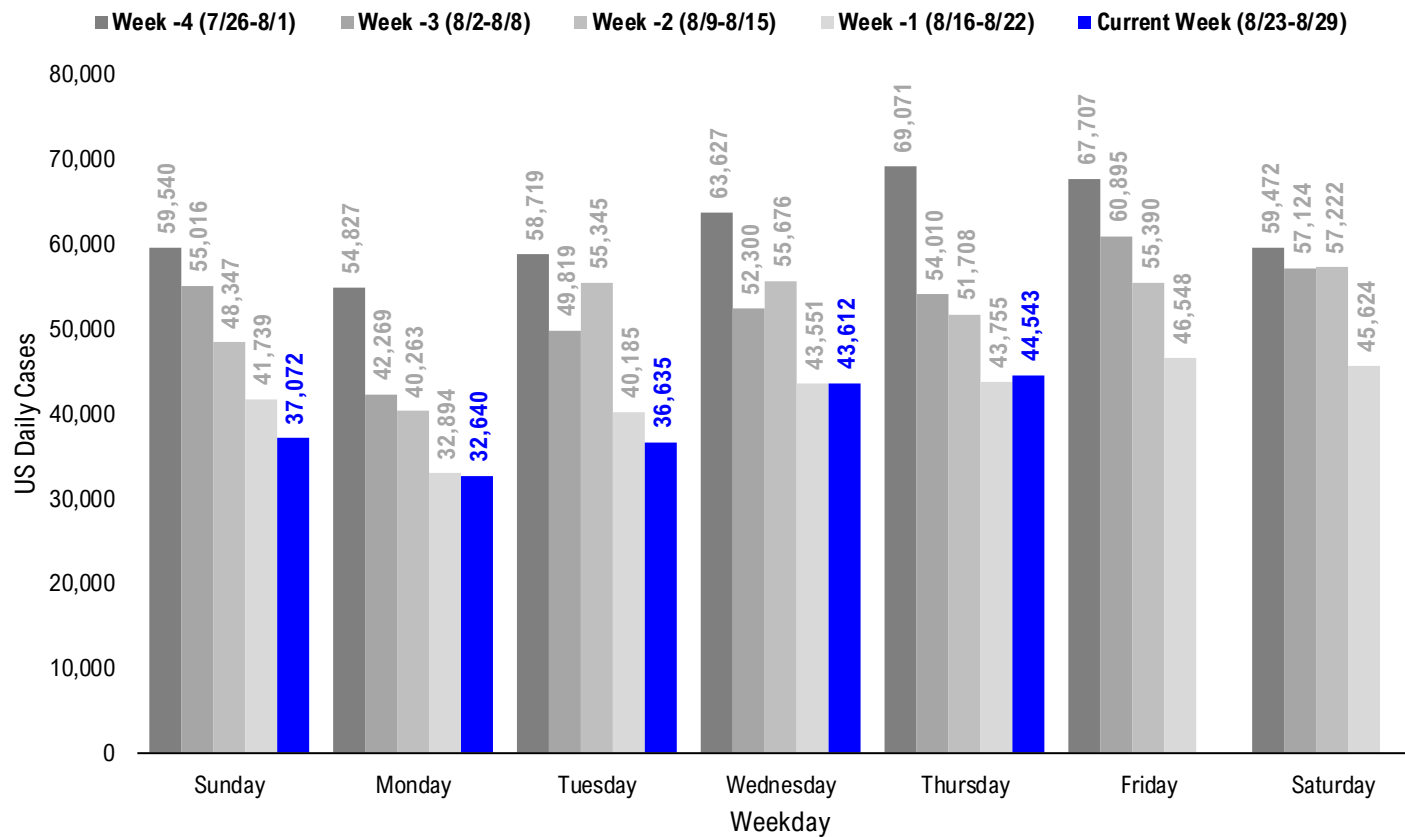
US daily new cases rolling 7D delta (Ex-California)*



* Ignored California since August 10, due to its data glitch caused 300,000-case backlog

Source: Fundstrat, COVID-19 Tracking Project, State Department of Health

#2: USA COVID-19 Daily Cases Weekday Seasonality (Past 4 Weeks) ...



#3: USA State COVID-19 Situation at a Glance...

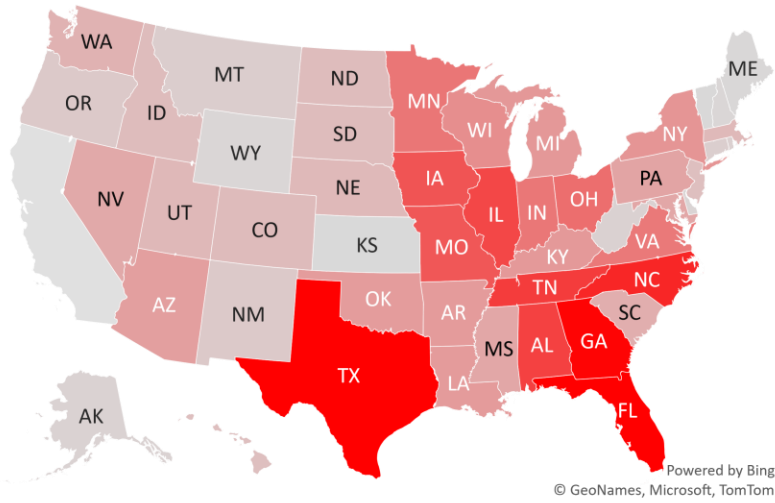
		Sorted Daily Cases		Daily Cases (3D avg) per 1mm residents		Since Peak				
		8/27/20	7D Delta	8/27/20	7D Delta	# Days	% Decline in Daily Cases			
% US Pop										
United States		100%	44,543	+788	127	-3	41	-42%		
United States (ex-CA)		88%	38,539	+2,278	124	-1	41	-38%		
States:										
1	Texas	8.7%	5,059	-244	189	-30	41	-54%		
2	California	11.9%	4,430	-1,490	126	-15	34	-57%		
3	Florida	6.5%	3,269	-1,286	142	-52	45	-76%		
4	Georgia	3.2%	2,484	-275	214	-33	33	-47%		
5	North Carolina	3.2%	2,091	+119	149	+9	40	-30%		
6	Tennessee	2.1%	1,826	+451	223	+7	30	-45%		
7	Alabama	1.5%	1,769	+798	293	+59	33	-32%		
8	Illinois	3.8%	1,707	-125	146	-8	105	-38%		
9	Iowa	1.0%	1,551	+824	333	+197	0	0%		
10	Missouri	1.8%	1,512	+454	197	+28	28	-37%		
11	Ohio	3.5%	1,244	+122	91	+7	27	-32%		
12	Minnesota	1.7%	1,154	+464	124	+30	32	-14%		
13	Indiana	2.0%	1,145	+204	144	+32	18	-12%		
14	Virginia	2.6%	1,121	+258	115	+19	18	-30%		
15	Wisconsin	1.8%	878	+138	131	+14	33	-24%		
16	New York	5.9%	791	+190	34	+2	139	-94%		
17	Michigan	3.0%	758	+339	77	+26	125	-37%		
18	Kentucky	1.3%	748	+48	155	+11	13	-17%		
19	Louisiana	1.4%	723	-195	152	-16	37	-74%		
20	Arkansas	0.9%	722	+173	204	+18	33	-32%		
21	Oklahoma	1.2%	712	-34	171	+6	30	-45%		
22	Arizona	2.2%	680	-43	79	-25	56	-87%		
23	Pennsylvania	3.9%	620	-171	44	-11	139	-69%		
24	Mississippi	0.9%	585	-309	256	-84	28	-50%		
25	Maryland	1.8%	577	-3	77	-7	98	-63%		
26	Nevada	0.9%	554	-2	131	-44	40	-70%		
27	South Carolina	1.6%	505	-404	133	-21	46	-66%		
28	Puerto Rico	1.0%	459	+335	57	-32	9	-58%		

		Sorted Daily Cases		Daily Cases (3D avg) per 1mm residents		Since Peak				
		8/27/20	7D Delta	8/27/20	7D Delta	# Days	% Decline in Daily Cases			
% US Pop										
United States		100%	44,543	+788	127	-3	41	-42%		
United States (ex-CA)		88%	38,539	+2,278	124	-1	41	-38%		
States:										
29	Washington	2.3%	456	+31	50	-3	43	-63%		
30	Utah	1.0%	383	-78	124	+11	40	-51%		
31	Nebraska	0.6%	374	+66	182	+46	117	-32%		
32	Massachusetts	2.1%	368	+55	53	+10	124	-89%		
33	Colorado	1.7%	350	+21	58	+8	123	-54%		
34	South Dakota	0.3%	343	+218	290	+165	0	0%		
35	Idaho	0.5%	342	-82	196	-24	41	-48%		
36	North Dakota	0.2%	333	+59	350	+89	0	0%		
37	New Jersey	2.7%	307	+207	34	+5	144	-92%		
38	Hawaii	0.4%	306	+70	188	+40	12	-8%		
39	Oregon	1.3%	190	-105	48	-9	26	-45%		
40	New Mexico	0.6%	188	-14	72	+0	29	-59%		
41	Montana	0.3%	143	+26	138	+49	27	-10%		
42	Connecticut	1.1%	130	+12	32	+11	127	-92%		
43	Guam	0.0%	112	+7	654	+360	0	0%		
44	Rhode Island	0.3%	108	+32	90	-4	124	-78%		
45	West Virginia	0.5%	93	-88	60	-5	48	-39%		
46	Alaska	0.2%	80	-2	75	-21	25	-59%		
47	District of Columbia	0.2%	72	+17	73	+9	116	-78%		
48	Delaware	0.3%	60	-15	36	-27	121	-90%		
49	Wyoming	0.2%	38	+0	69	-10	120	-32%		
50	New Hampshire	0.4%	35	+21	15	+3	117	-84%		
51	Maine	0.4%	25	+6	14	+0	97	-72%		
52	U.S. Virgin Islands	0.0%	22	-19	212	-128	6	-50%		
53	Vermont	0.2%	11	+7	11	+5	144	-89%		
54	Northern Mariana Islands	0.0%	0	+0	0	-6	146	-100%		
55	Kansas	0.9%	0	+0	176	+93	1	-50%		
56	American Samoa	0.0%	0	+0	0	+0	-	-		

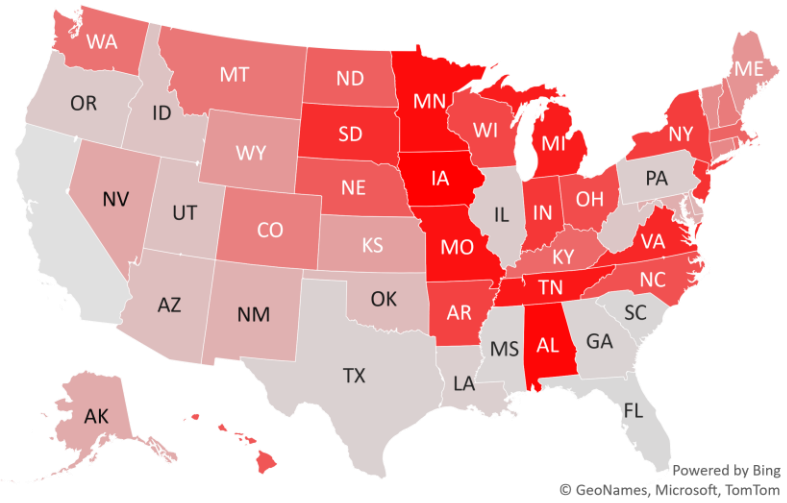
* Ignored California in the 7D Delta of Daily Cases since August 10, due to its data glitch caused 300,000-case backlog
 Source: Fundstrat, COVID-19 Tracking Project, State Department of Health

#4: USA COVID-19 Heat Map...

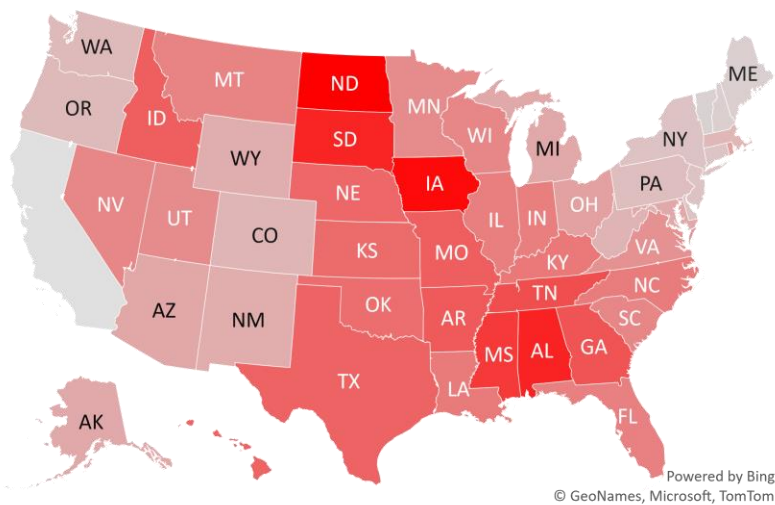
Daily Case Increases



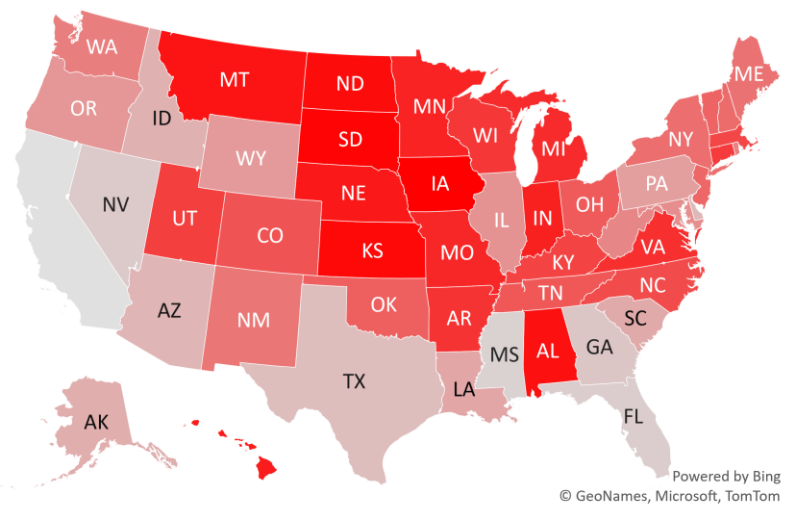
7D Delta in Daily New Cases



Daily Case Increases per 1mm Resident (3D Avg)



7D Delta in Daily New Cases per 1mm (3D Avg)



* California is ignored in the heatmaps due to its data glitch which caused 300,000-case backlog
Source: Fundstrat, COVID-19 Tracking Project, State Department of Health

#6: US New Cases by States... (sorted by today's new cases)

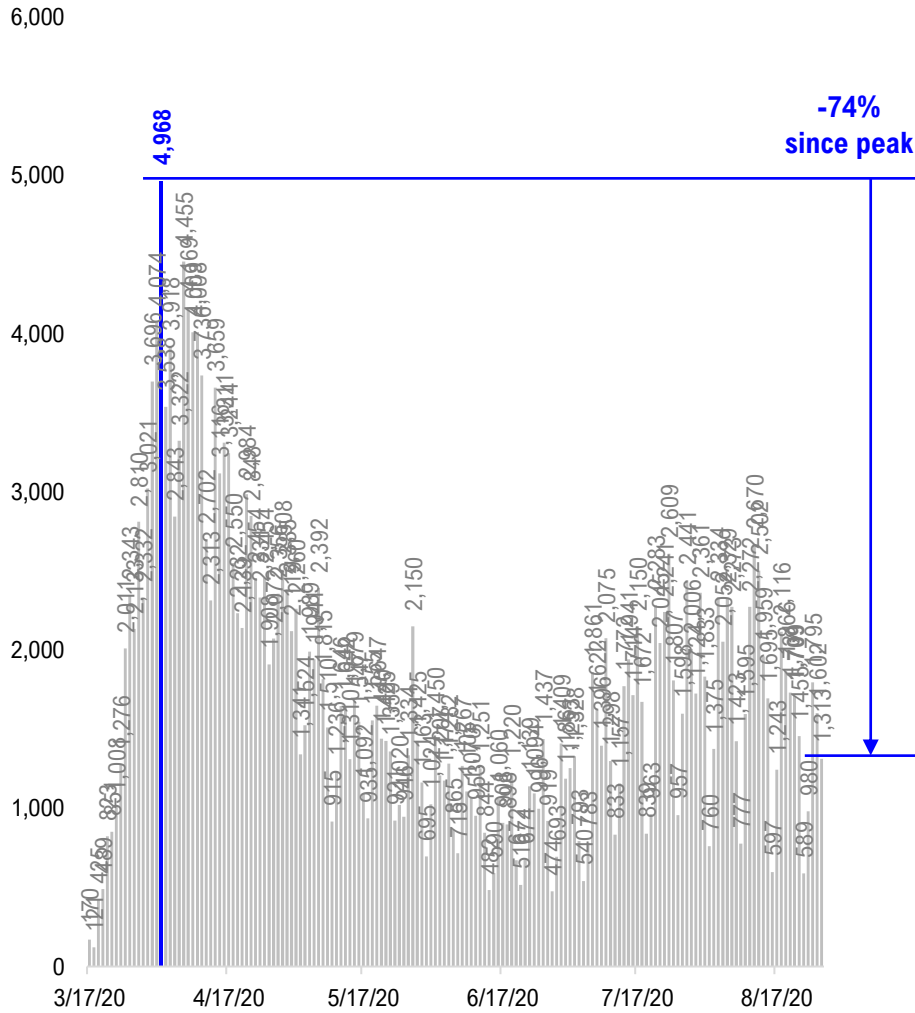
	Sorted				7D Ago		Sorted				7D Ago	
	7D Ago	Last 3-day Trend					7D Ago	Last 3-day Trend				
	8/20/20	8/25/20	8/26/20	8/27/20			8/20/20	8/25/20	8/26/20	8/27/20		
United States	43,755	36,635	43,612	44,543	+931		43,755	36,635	43,612	44,543	+931	
United States (ex-CA)	37,835	32,155	37,608	40,113	+2,505		37,835	32,155	37,608	40,113	+2,505	
States:						States:						
Texas	5,303	6,091	5,313	5,059		Washington	425	359	334	456	<--higher	
California	5,920	4,480	6,004	4,430		Utah	461	403	407	383		
Florida	4,555	2,673	3,220	3,269		Nebraska	308	301	379	374		
Georgia	2,759	2,101	2,236	2,484		Massachusetts	313	398	336	368		
North Carolina	1,972	1,345	1,244	2,091	<--higher	Colorado	329	459	193	350		
Tennessee	1,375	813	1,936	1,826		South Dakota	125	134	292	343		
Alabama	971	532	2,012	1,769		Idaho	424	405	305	342		
Illinois	1,832	1,680	2,157	1,707		North Dakota	274	229	238	333	<--higher	
Iowa	727	661	941	1,551	<--higher	New Jersey	100	302	285	307		
Missouri	1,058	692	1,426	1,512		Hawaii	236	214	277	306		
Ohio	1,122	844	1,089	1,244		Oregon	295	236	180	190		
Minnesota	690	409	529	1,154	<--higher	New Mexico	202	66	197	188		
Indiana	941	829	938	1,145	<--higher	Montana	117	135	163	143		
Virginia	863	1,005	823	1,121		Connecticut	118	29	180	130		
Wisconsin	740	638	768	878		Guam	105	77	136	112		
New York	601	629	566	791	<--higher	Rhode Island	76	70	109	108		
Michigan	419	779	761	758		West Virginia	181	83	145	93		
Kentucky	700	669	662	748		Alaska	82	33	52	80	<--higher	
Louisiana	918	550	844	723		District of Columbia	55	45	38	72	<--higher	
Arkansas	549	480	649	722		Delaware	75	20	24	60	<--higher	
Oklahoma	746	650	666	712		Wyoming	38	31	50	38		
Arizona	723	858	187	680		New Hampshire	14	16	9	35		
Pennsylvania	791	561	501	620		Maine	19	12	21	25		
Mississippi	894	801	904	585		U.S. Virgin Islands	41	14	32	22		
Maryland	580	377	440	577	<--higher	Vermont	4	7	2	11	<--higher	
Nevada	556	403	253	554	<--higher	Northern Mariana Islands	0	0	0	0		
South Carolina	909	937	605	505		Kansas	0	0	1,536	0		
Puerto Rico	124	70	18	459	<--higher	American Samoa	0	0	0	0		

<--higher – if the state has 20% or more daily cases than prior two days...
 Source: Fundstrat, COVID-19 Tracking Project, State Department of Health

#7: US Daily Hospitalizations...(aggregated by data type)

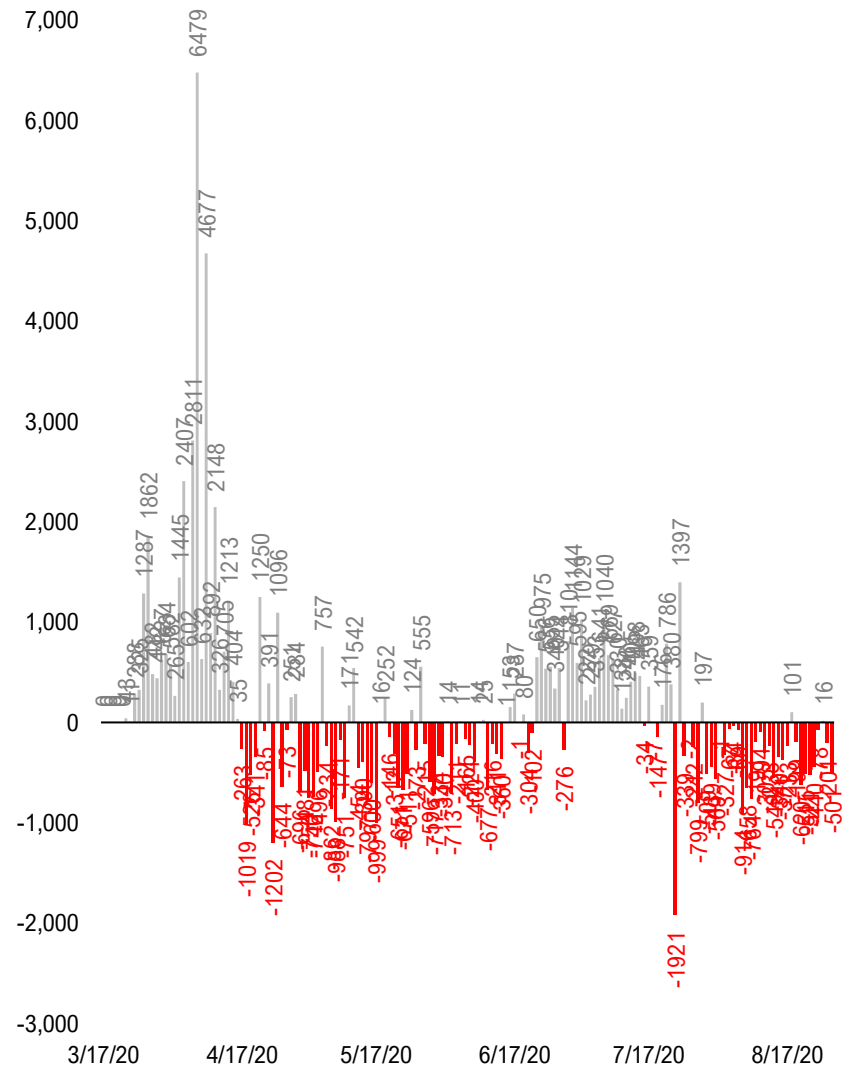
US Gross Hospitalizations

(Composite of 33 states that report "gross hospitalizations")



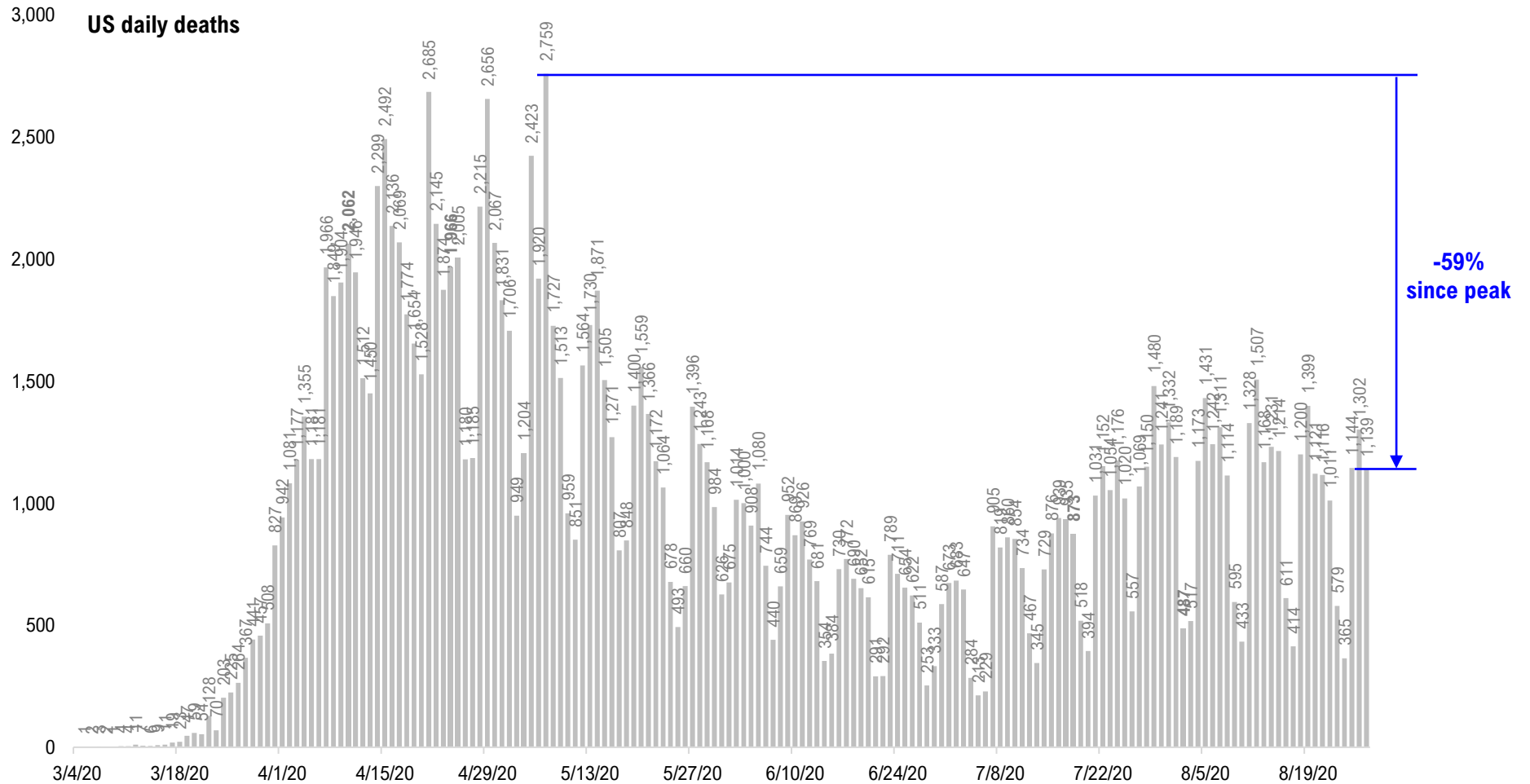
US Net Hospitalizations

(Composite of 18 states that report "net/current hospitalizations")



#8: US Daily New Fatalities...

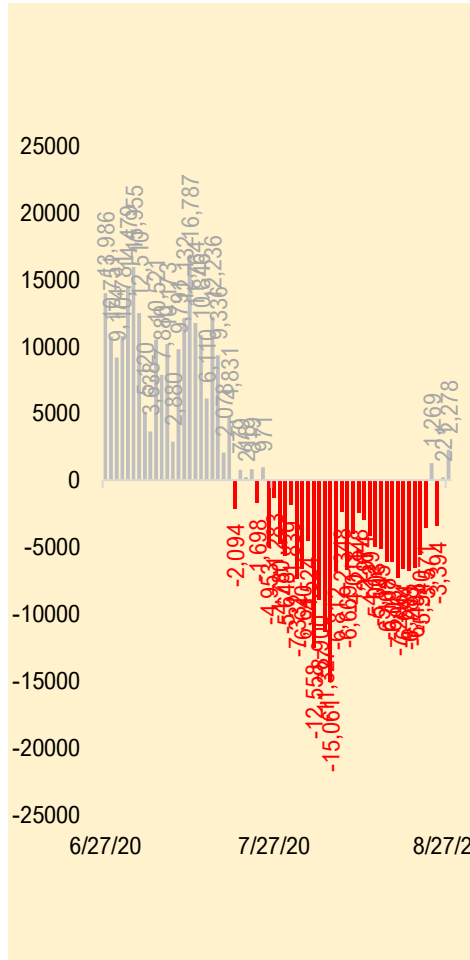
US daily COVID-19 Fatalities



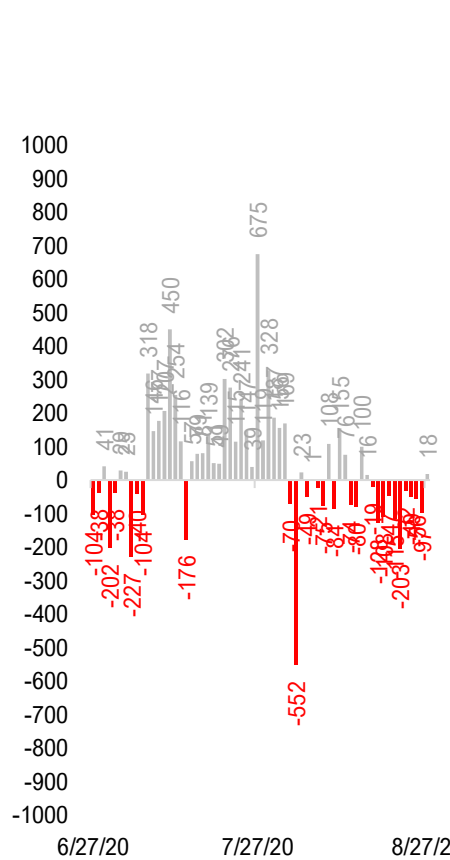
Source: Fundstrat, COVID-19 Tracking Project, State Department of Health

#9: Rolling 7-Day Change in the Key Metrics... (Past 8 Weeks)

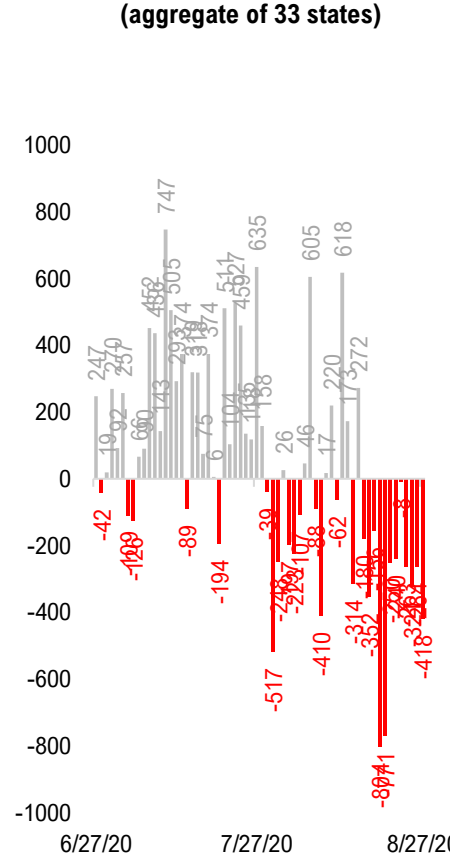
Daily New Cases (ex-CA)



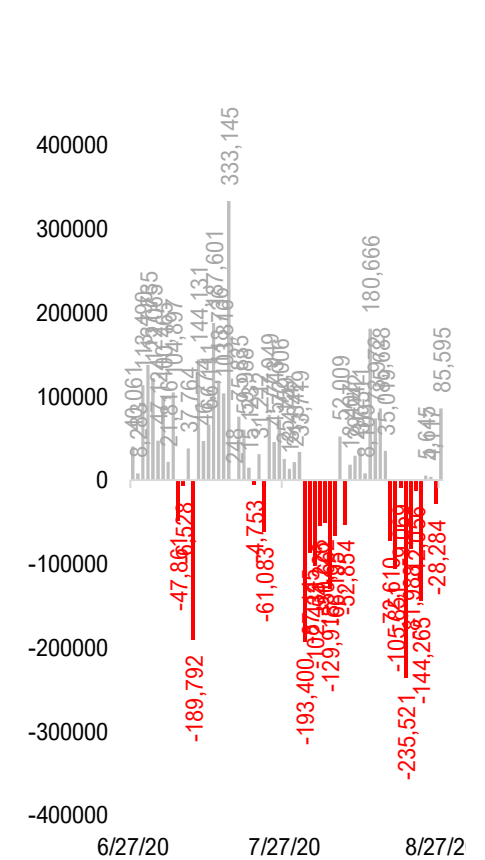
Daily Deaths



Daily New Gross hospitalization (aggregate of 33 states)

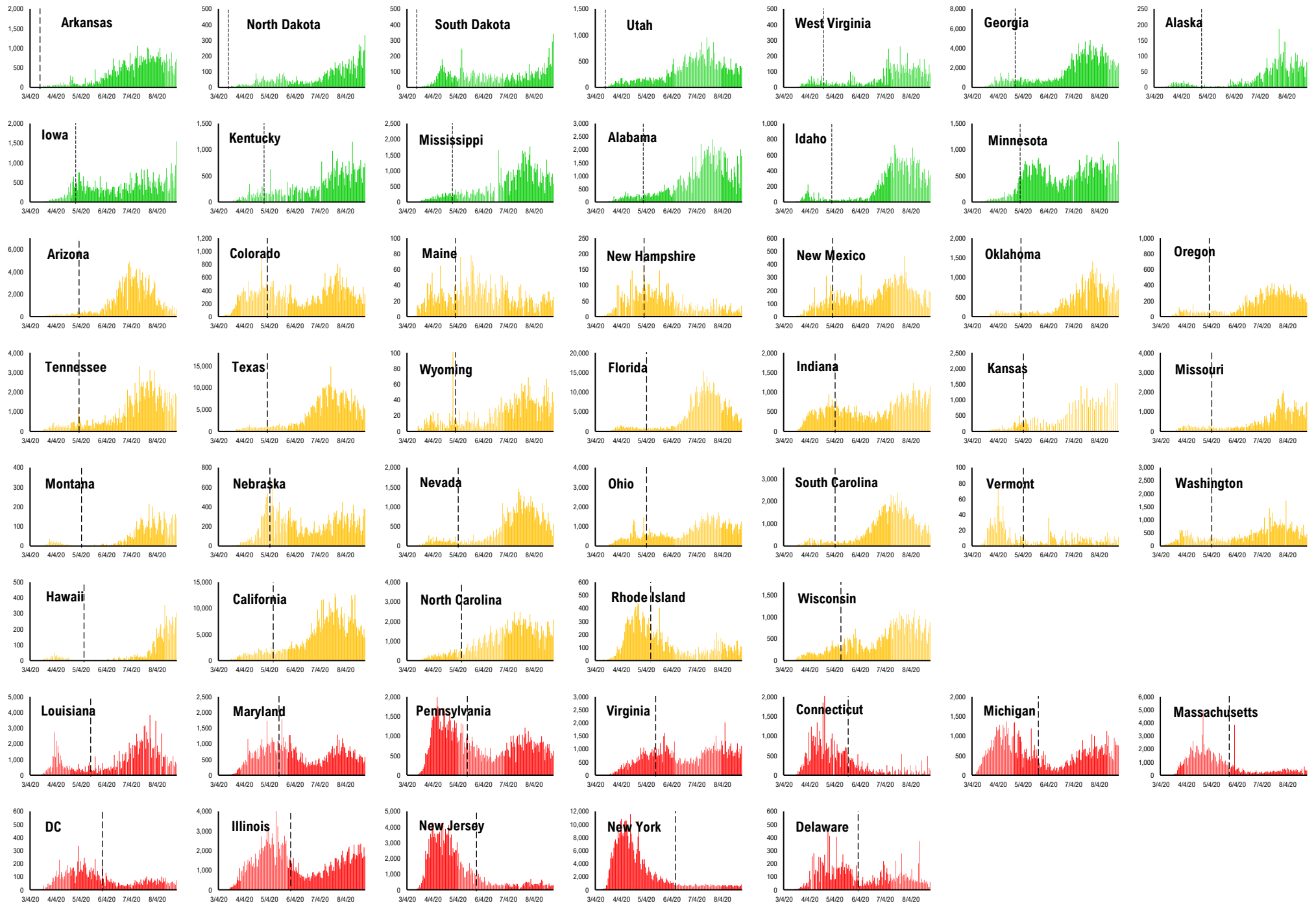


Daily Tests

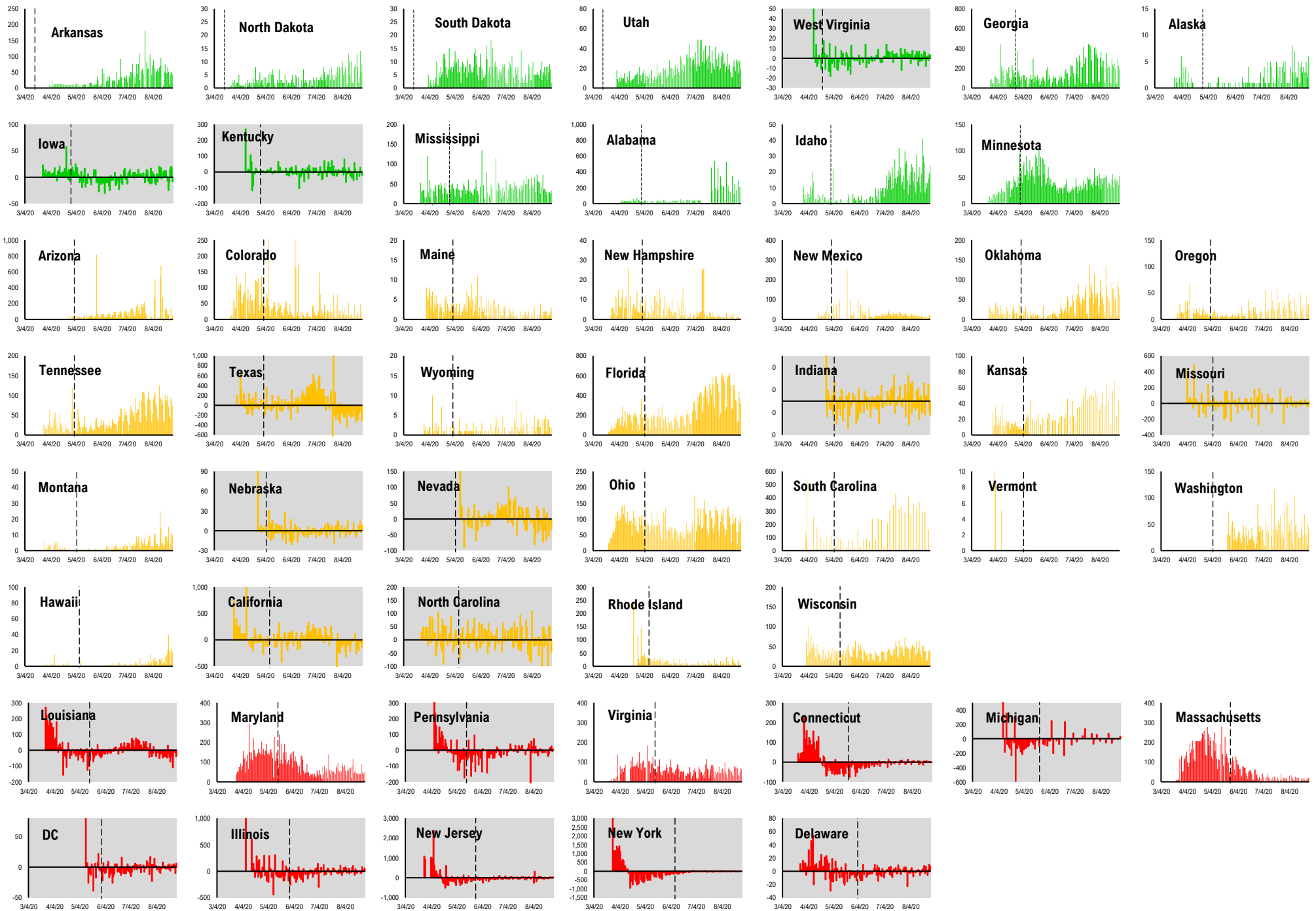


* Ignored California since August 10, due to its data glitch caused 300,000-case backlog
Source: Fundstrat, COVID-19 Tracking Project, State Department of Health

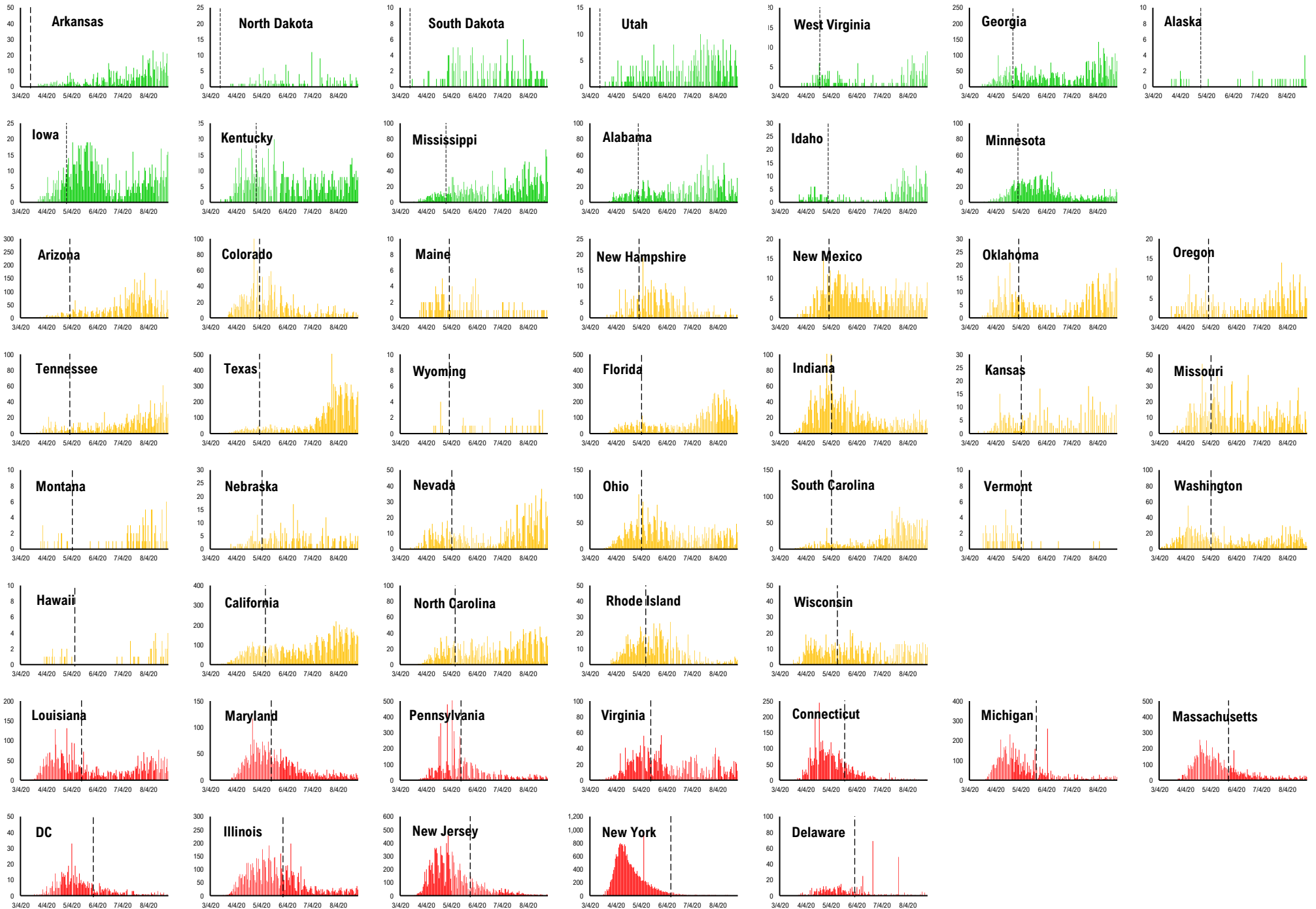
#10: Daily New Cases by States... (sorted by "open" date)



#11: Daily Hospitalizations by States... (sorted by "open" date)



#12: Daily New Deaths by States... (sorted by "open" date)



#13: State COVID-19 situation by Reopen Date...

Daily Cases

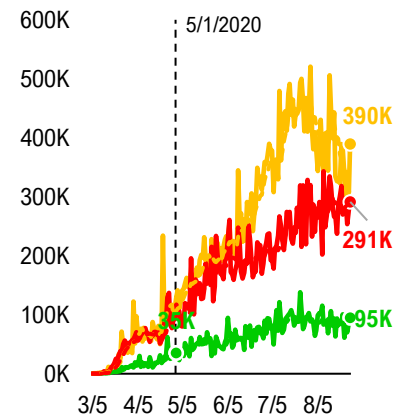
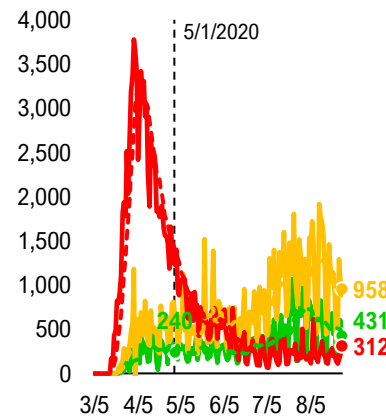
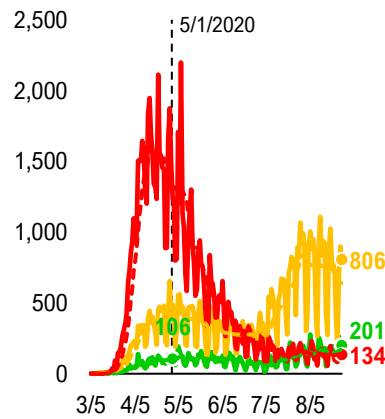
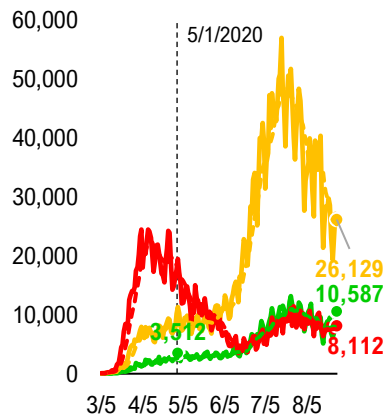
Daily Deaths

Daily Hospitalization

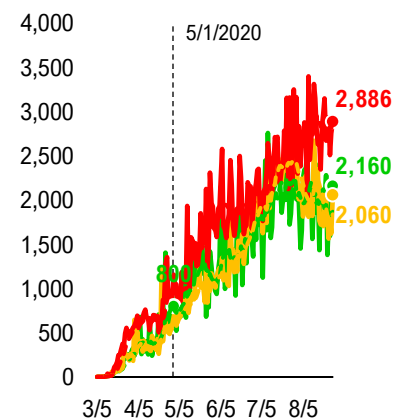
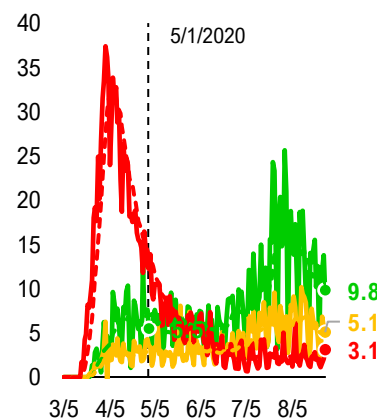
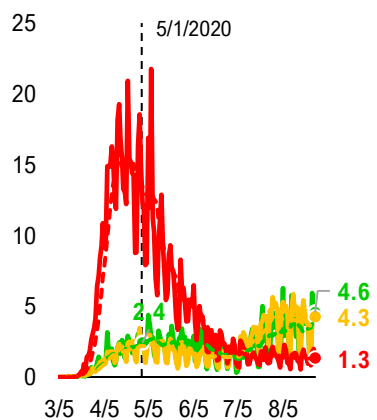
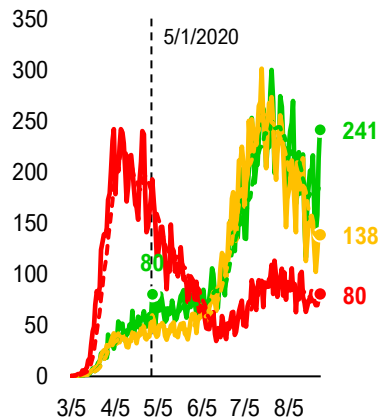
Daily Testing

— States Open Before 5/1 — States Open between 5/1 and 5/11 — States Open after 5/11

Composite Daily Aggregate

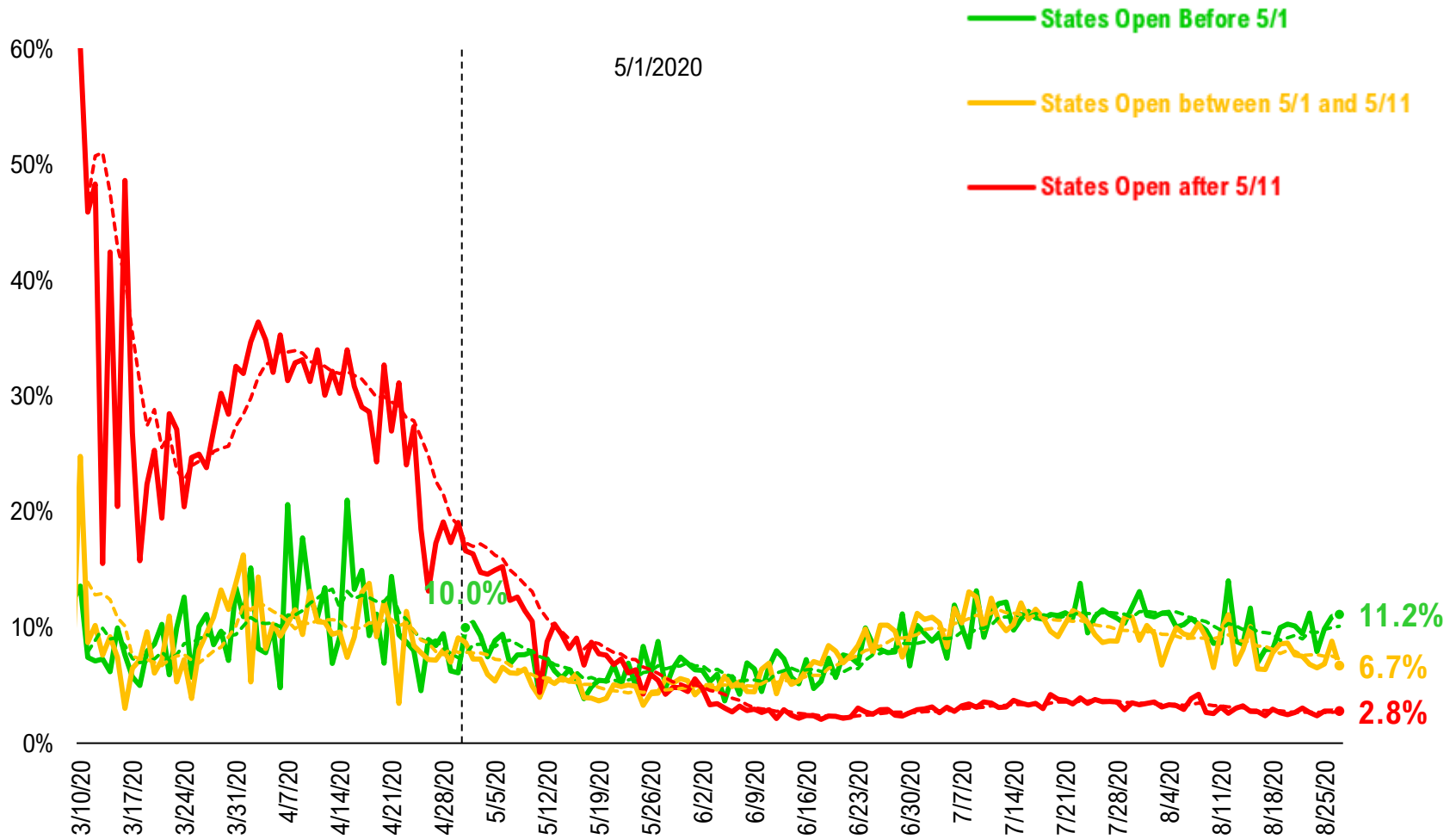


Composite Daily Aggregate Per 1mm Pop

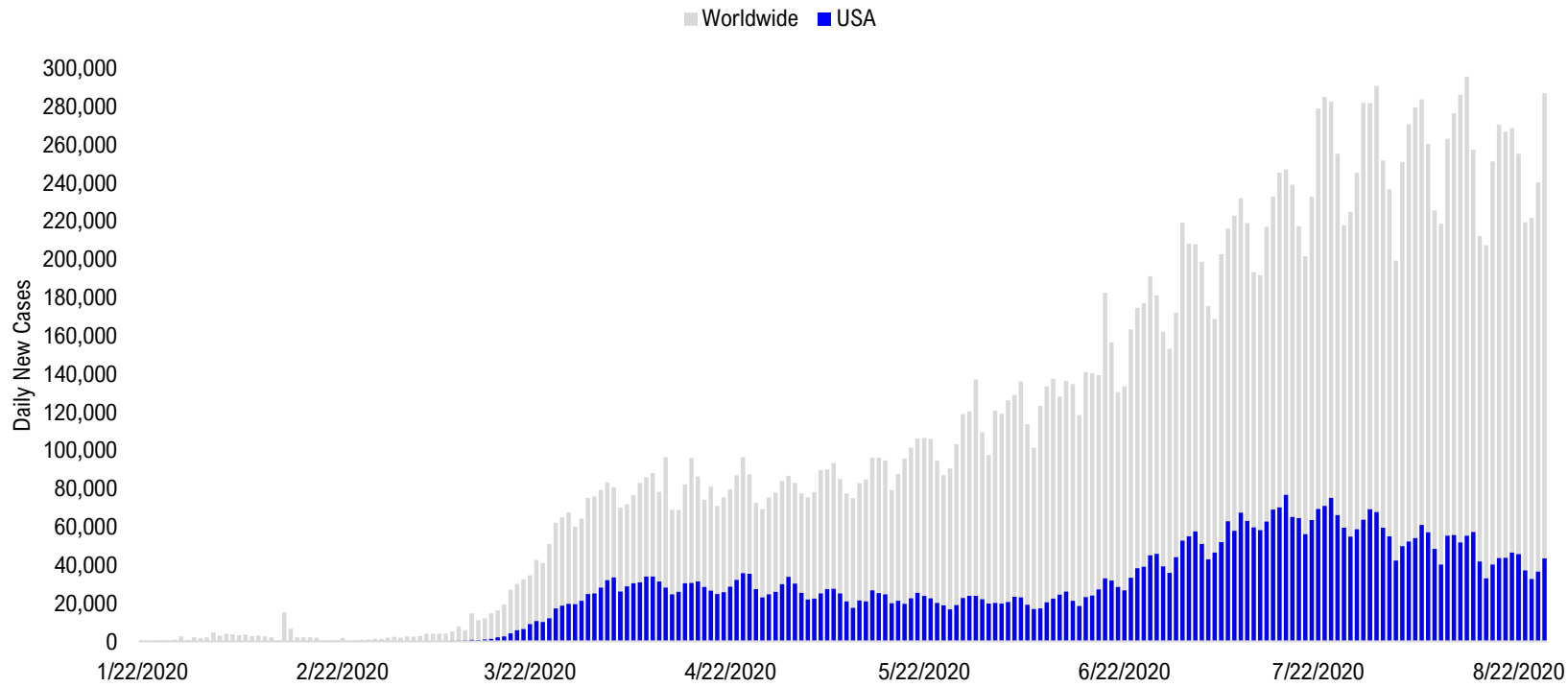


#14: State COVID-19 Daily Positivity Rate by Reopen Date...

Composite Daily Positivity Rate



#15: Global COVID-19 Situation at a Glance...



4/10/2020	4/24/2020	5/8/2020	5/22/2020	6/5/2020	6/19/2020	7/3/2020	7/17/2020	7/31/2020	8/14/2020	8/26/2020
Europe 38,586	US + Canada 34,019	US + Canada 28,068	Latin America 33,875	Latin America 47,182	Latin America 58,570	Latin America 72,231	Latin America 72,602	Latin America 97,308	Latin America 100,636	Latin America 77,807
US + Canada 34,328	Europe 30,669	Europe 27,422	US + Canada 25,073	US + Canada 21,894	US + Canada 28,473	US + Canada 55,408	US + Canada 72,365	US + Canada 67,272	Pakistan + India + Bangladesh 68,924	Pakistan + India + Bangladesh 70,789
Latin America 5,790	Latin America 11,820	Latin America 18,868	Europe 19,514	Europe 18,212	Pakistan + India + Bangladesh 22,981	Pakistan + India + Bangladesh 27,389	Pakistan + India + Bangladesh 39,450	Pakistan + India + Bangladesh 58,625	US + Canada 54,663	US + Canada 38,048
Asia ex- India+Pakistan 1,638	Pakistan + India + Bangladesh 2,801	Pakistan + India + Bangladesh 5,721	Pakistan + India + Bangladesh 9,981	Pakistan + India + Bangladesh 16,820	Europe 18,730	Europe 16,249	Africa 19,290	Europe 20,876	Europe 28,288	Europe 33,466
Pakistan + India + Bangladesh 1,098	Asia ex- India+Pakistan 2,369	Africa 2,945	Africa 4,166	Africa 6,467	Africa 8,930	Africa 14,218	Europe 17,457	Africa 17,999	Africa 10,680	Asia ex- India+Pakistan 9,292
Africa 760	Africa 1,520	Asia ex- India+Pakistan 1,906	Asia ex- India+Pakistan 2,225	Asia ex- India+Pakistan 2,565	Asia ex- India+Pakistan 3,314	Asia ex- India+Pakistan 12,006	Asia ex- India+Pakistan 7,321	Asia ex- India+Pakistan 10,630	Asia ex- India+Pakistan 10,512	Africa 7,991

Disclosures

This research is for the clients of FS Insight only. For important disclosures and rating histories regarding sectors or companies that are the subject of this report, please contact your sales representative or FS Insight at 150 East 52nd Street, New York, NY, 10022 USA.

Analyst Certification (Reg AC)

Thomas J. Lee, the research analyst denoted by an “AC” on the cover of this report, hereby certifies that all of the views expressed in this report accurately reflect his personal views, which have not been influenced by considerations of the firm’s business or client relationships.

Neither I, nor a member of my household is an officer, director, or advisory board member of the issuer(s) or has another significant affiliation with the issuer(s) that is/are the subject of this research report. There is a possibility that we will from time to time have long or short positions in, and buy or sell, the securities or derivatives, if any, referred to in this research

Conflicts of Interest

This research contains the views, opinions and recommendations of FS Insight . As of the time of writing and publication of this presentation, FS Insight does not know of, or have reason to know of any material conflicts of interest at the time of the publication of this presentation. The Company has no contractual relationship, nor have we received any compensation from any of the companies listed in this research report.

Analyst Industry/Sector Views

Positive (+): The analyst expects the performance of his industry/sector coverage universe over the next 6-18 months to be attractive vs. the relevant broad market benchmark, being the S&P 500 for North America.

Neutral (N): The analyst expects the performance of his or her industry/sector coverage universe over the next 6-18 months to be in line with the relevant broad market benchmark, being the S&P 500 for North America.

Negative (-): The analyst expects his or her industry coverage universe over the next 6-18 months to underperform vs. the relevant broad market benchmark, being the S&P 500 for North America.

General Disclosures

FS Insight is an independent research company and is not a registered investment advisor and is not acting as a broker dealer under any federal or state securities laws. FS Insight is a member of IRC Securities’ Research Prime Services Platform. IRC Securities is a FINRA registered broker-dealer that is focused on supporting the independent research industry. Certain personnel of FS Insight (i.e. Research Analysts) are registered representatives of IRC Securities, a FINRA member firm registered as a broker-dealer with the Securities and Exchange Commission and certain state securities regulators. As registered representatives and independent contractors of IRC Securities, such personnel may receive commissions paid to or shared with IRC Securities for transactions placed by FS Insight clients directly with IRC Securities or with securities firms that may share commissions with IRC Securities in accordance with applicable SEC and FINRA requirements. IRC Securities does not distribute the research of FS Insight , which is available to select institutional clients that have engaged FS Insight .

As registered representatives of IRC Securities our analysts must follow IRC Securities’ Written Supervisory Procedures. Notable compliance policies include (1) prohibition of insider trading or the facilitation thereof, (2) maintaining client confidentiality, (3) archival of electronic communications, and (4) appropriate use of electronic communications, amongst other compliance related policies.

FS Insight does not have the same conflicts that traditional sell-side research organizations have because FS Insight (1) does not conduct any investment banking activities, (2) does not manage any investment funds, and (3) our clients are only institutional investors.

This research is for the clients of FS Insight only. Additional information is available upon request. Information has been obtained from sources believed to be reliable but FS Insight does not warrant its completeness or accuracy except with respect to any disclosures relative to FS Insight and the analyst’s involvement (if any) with any of the subject companies of the research. All pricing is as of the market close for the securities discussed, unless otherwise stated. Opinions and estimates constitute our judgment as of the date of this material and are subject to change without notice. Past performance is not indicative of future results. This material is not intended as an offer or solicitation for the purchase or sale of any financial instrument. The opinions and recommendations herein do not take into account individual client circumstances, risk tolerance, objectives, or needs and are not intended as recommendations of particular securities, financial instruments or strategies. The recipient of this report must make its own independent decision regarding any securities or financial instruments mentioned herein. Except in circumstances where FS Insight expressly agrees otherwise in writing, FS Insight is not acting as a municipal advisor and the opinions or views contained herein are not intended to be, and do not constitute, advice, including within the meaning of Section 15B of the Securities Exchange Act of 1934. All research reports are disseminated and available to all clients simultaneously through electronic publication to our internal client website, FS Insight .com. Not all research content is redistributed to our clients or made available to third-party aggregators or the media. Please contact your sales representative if you would like to receive any of our research publications.

Copyright 2020 FS Insight LLC. All rights reserved. No part of this material may be reprinted, sold or redistributed without the prior written consent of FS Insight LLC.