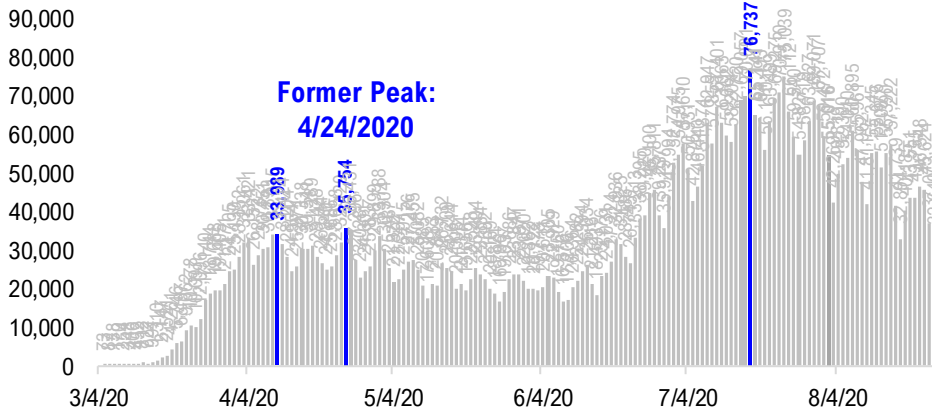


# FSInsight Daily COVID-19 Chartbook

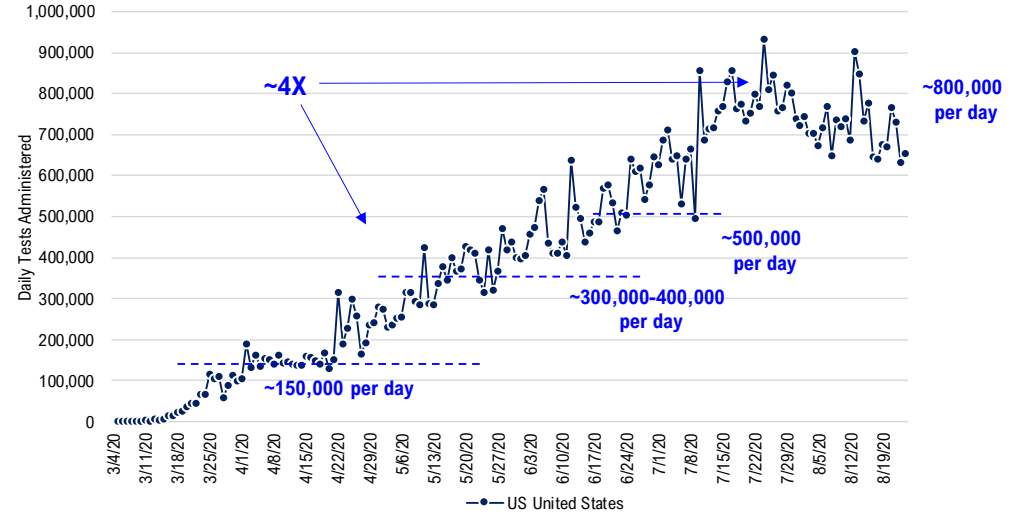


# #1: USA COVID-19 Situation at a Glance...

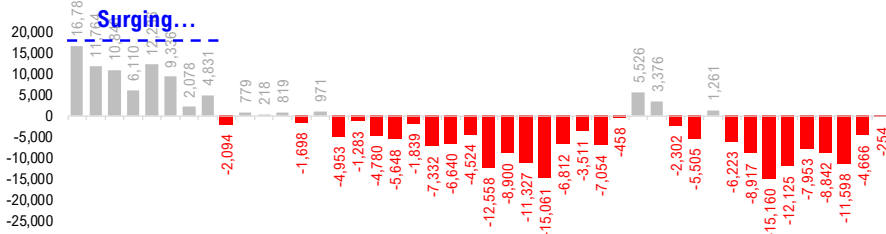
US daily new cases



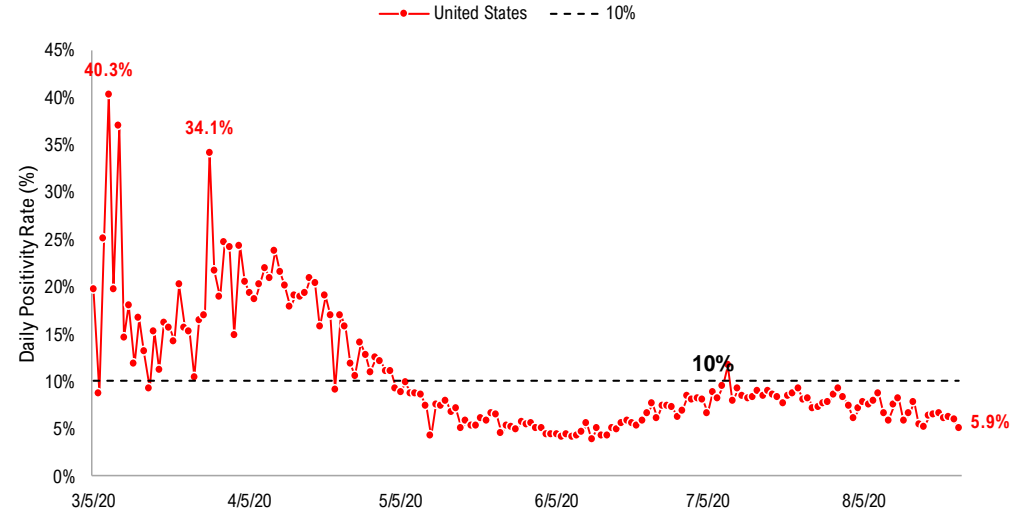
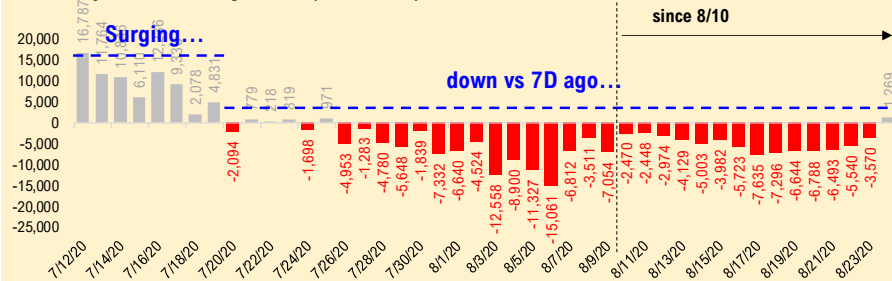
USA total COVID-19 tests administered



US daily new cases rolling 7D delta



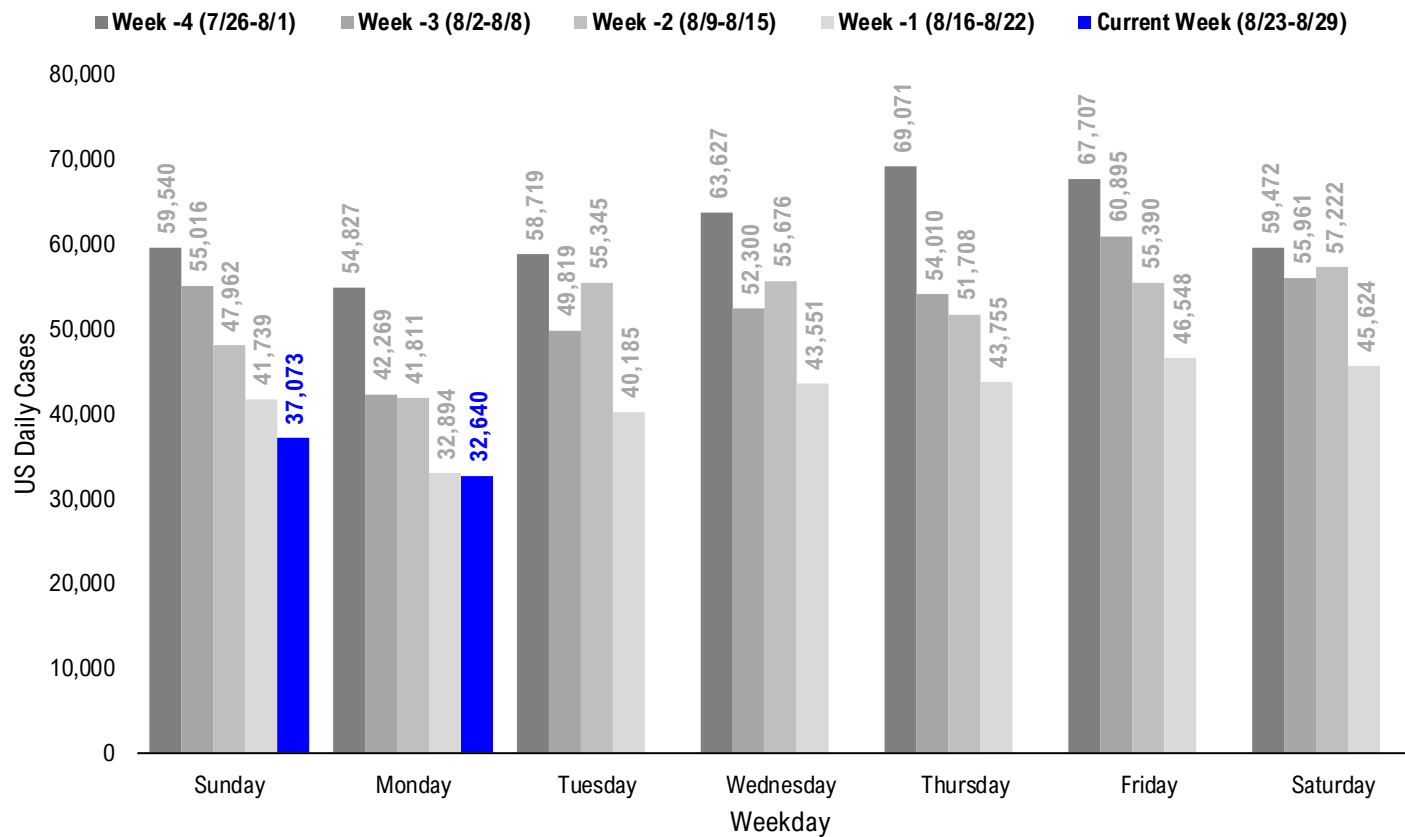
US daily new cases rolling 7D delta (Ex-California)\*



\* Ignored California since August 10, due to its data glitch caused 300,000-case backlog

Source: Fundstrat, COVID-19 Tracking Project, State Department of Health

## #2: USA COVID-19 Daily Cases Weekday Seasonality (Past 4 Weeks) ...



# #3: USA State COVID-19 Situation at a Glance...

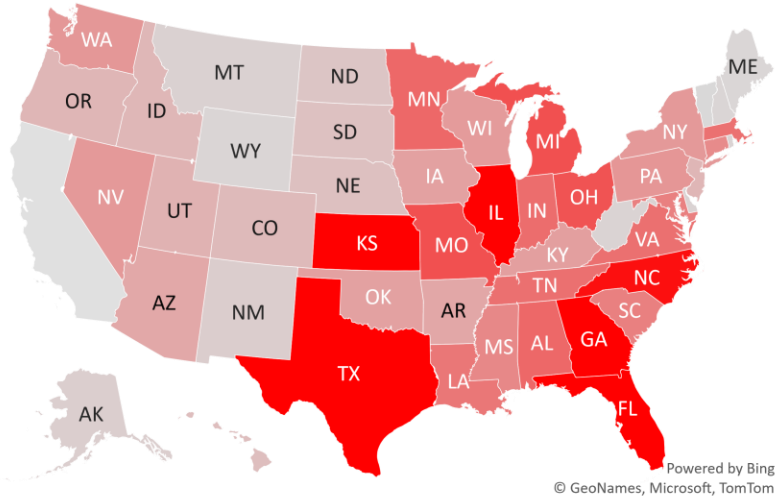
	<b>Sorted</b>	<b>Daily Cases (3D avg)</b>		<b>Daily Cases (3D avg)</b>		<b>Since Peak</b>		
	<b>Daily Cases</b>	<b>per 1mm residents</b>		<b>per 1mm residents</b>		<b>Since Peak</b>		<b>% Decline</b>
	<b>% US</b>	<b>8/24/20</b>	<b>7D Delta</b>	<b>8/24/20</b>	<b>7D Delta</b>	<b># Days</b>	<b>Cases</b>	<b>in Daily</b>
	<b>Pop</b>							<b>Cases</b>
United States	100%	32,640	-254	117	-17	38	-47%	
United States (ex-CA)	88%	27,694	+1,269	111	-9	38	-55%	
<b>States:</b>								
1 California	11.9%	4,946	-1,523	154	-73	31	-47%	
2 Texas	8.7%	2,754	+41	129	-62	38	-69%	
3 Georgia	3.2%	2,304	+473	208	-11	30	-49%	
4 Florida	6.5%	2,258	-420	148	-51	42	-75%	
5 Illinois	3.8%	1,612	-161	154	+18	102	-34%	
6 Kansas	0.9%	1,545	+263	177	+30	40	-33%	
7 North Carolina	3.2%	1,283	+719	143	+36	37	-33%	
8 Missouri	1.8%	869	-279	162	-20	25	-48%	
9 Michigan	3.0%	868	+403	86	+18	122	-30%	
10 Ohio	3.5%	849	+74	74	+3	24	-44%	
11 Alabama	1.5%	718	+147	268	+85	30	-38%	
12 Minnesota	1.7%	714	+150	128	+10	29	-11%	
13 Indiana	2.0%	688	+97	114	-4	15	-31%	
14 Tennessee	2.1%	667	-369	184	-26	27	-54%	
15 Virginia	2.6%	664	-70	108	+7	15	-34%	
16 Massachusetts	2.1%	662	+414	39	-15	121	-92%	
17 Louisiana	1.4%	623	+56	132	+7	34	-77%	
18 Maryland	1.8%	567	+64	98	-4	95	-53%	
19 South Carolina	1.6%	563	+107	141	+4	43	-64%	
20 Mississippi	0.9%	511	+235	233	+67	25	-55%	
21 Connecticut	1.1%	492	+122	46	+11	124	-89%	
22 Puerto Rico	1.0%	445	-27	95	-9	6	-30%	
23 Pennsylvania	3.9%	426	+42	48	-1	136	-66%	
24 Washington	2.3%	417	-159	71	-22	40	-47%	
25 Nevada	0.9%	409	-253	171	-69	37	-61%	
26 New York	5.9%	408	+0	28	-2	136	-95%	
27 Wisconsin	1.8%	392	-63	103	-10	30	-41%	
28 Kentucky	1.3%	370	-6	122	+18	10	-35%	

	<b>Sorted</b>	<b>Daily Cases (3D avg)</b>		<b>Daily Cases (3D avg)</b>		<b>Since Peak</b>		
	<b>Daily Cases</b>	<b>per 1mm residents</b>		<b>per 1mm residents</b>		<b>Since Peak</b>		<b>% Decline</b>
	<b>% US</b>	<b>8/24/20</b>	<b>7D Delta</b>	<b>8/24/20</b>	<b>7D Delta</b>	<b># Days</b>	<b>Cases</b>	<b>in Daily</b>
	<b>Pop</b>							<b>Cases</b>
United States	100%	32,640	-254	117	-17	38	-47%	
United States (ex-CA)	88%	27,694	+1,269	111	-9	38	-55%	
<b>States:</b>								
29 Iowa	1.0%	358	+64	172	-17	2	-34%	
30 Oklahoma	1.2%	357	-12	150	-3	27	-52%	
31 Arkansas	0.9%	320	-92	137	-77	30	-55%	
32 Arizona	2.2%	311	-157	69	-35	53	-88%	
33 Utah	1.0%	249	+7	96	+0	37	-62%	
34 New Jersey	2.7%	225	-87	34	+11	141	-92%	
35 Oregon	1.3%	220	-32	58	-8	23	-33%	
36 Idaho	0.5%	217	-65	131	-13	38	-66%	
37 Colorado	1.7%	198	+4	44	-4	120	-65%	
38 Hawaii	0.4%	169	-5	164	+5	9	-19%	
39 Nebraska	0.6%	158	-33	73	-27	114	-73%	
40 South Dakota	0.3%	149	+63	204	+77	107	-12%	
41 North Dakota	0.2%	124	+65	230	+88	2	-32%	
42 Guam	0.0%	87	+45	282	+169	3	-26%	
43 New Mexico	0.6%	73	-19	59	+5	26	-66%	
44 Alaska	0.2%	69	+19	101	-6	22	-45%	
45 Montana	0.3%	52	+12	85	+8	24	-44%	
46 District of Columbia	0.2%	49	-4	80	+7	113	-75%	
47 Delaware	0.3%	47	-38	59	-8	118	-83%	
48 West Virginia	0.5%	40	-28	46	-21	45	-53%	
49 Rhode Island	0.3%	39	-19	88	+14	121	-78%	
50 New Hampshire	0.4%	27	+11	15	+6	114	-83%	
51 Wyoming	0.2%	24	-21	45	-40	117	-55%	
52 U.S. Virgin Islands	0.0%	24	+5	162	-12	3	-62%	
53 Maine	0.4%	21	-8	18	-3	94	-66%	
54 Vermont	0.2%	9	-3	13	-1	141	-86%	
55 Northern Mariana Islands	0.0%	0	-3	0	-18	143	-100%	
56 American Samoa	0.0%	0	+0	0	+0	-	-	

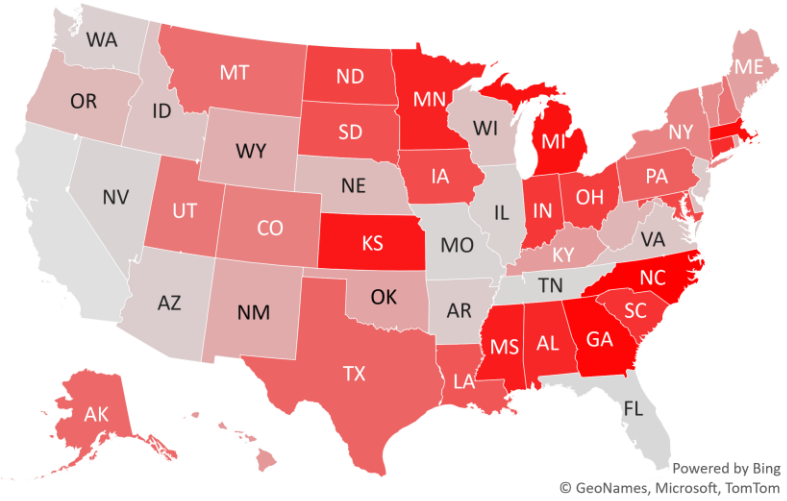
\* Ignored California in the 7D Delta of Daily Cases since August 10, due to its data glitch caused 300,000-case backlog  
 Source: Fundstrat, COVID-19 Tracking Project, State Department of Health

# #4: USA COVID-19 Heat Map...

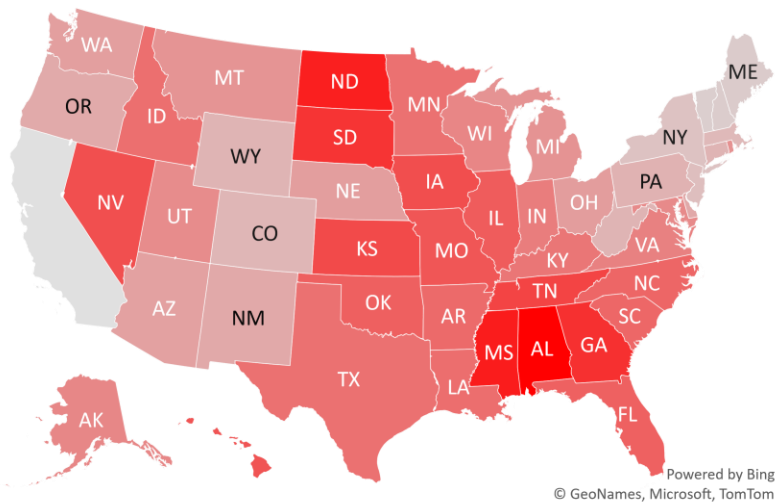
### Daily Case Increases



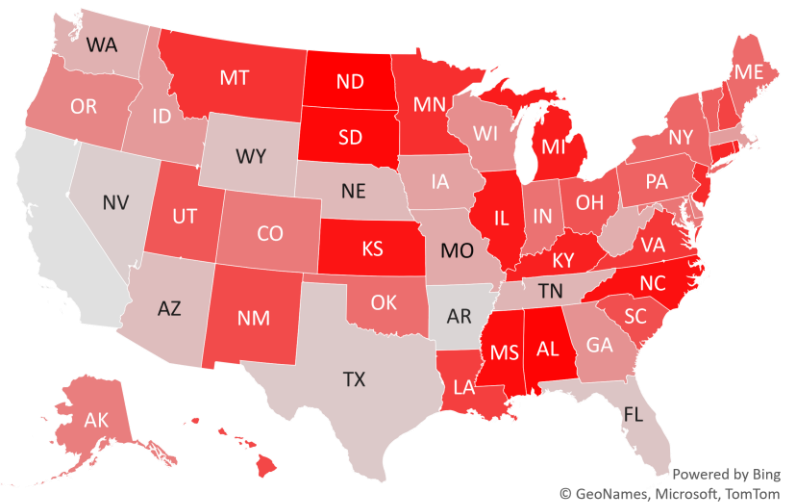
### 7D Delta in Daily New Cases



### Daily Case Increases per 1mm Resident (3D Avg)



### 7D Delta in Daily New Cases per 1mm (3D Avg)



\* California is ignored in the heatmaps due to its data glitch which caused 300,000-case backlog  
Source: Fundstrat, COVID-19 Tracking Project, State Department of Health



# #6: US New Cases by States... (sorted by today's new cases)

**Sorted**  
Last 3-day trend growth rates

	8/22/20	8/23/20	8/24/20	
United States	45,624	37,073	32,640	-4,433
United States (ex-CA)	39,068	30,296	27,694	-2,602
<b>States:</b>				
1	California	6,556	6,777	4,946
2	Texas	4,943	3,493	2,754
3	Georgia	2,592	1,727	2,304
4	Florida	4,311	2,974	2,258
5	Illinois	2,356	1,893	1,612
6	Kansas	0	0	1,545
7	North Carolina	1,729	1,472	1,283
8	Missouri	1,293	818	869
9	Michigan	953	768	868
10	Ohio	1,119	637	849
11	Alabama	1,762	1,460	718
12	Minnesota	734	717	714
13	Indiana	1,000	612	688
14	Tennessee	1,239	1,854	667
15	Virginia	1,212	894	664
16	Massachusetts	144	0	662 <--higher
17	Louisiana	0	1,223	623
18	Maryland	624	579	567
19	South Carolina	917	693	563
20	Mississippi	945	626	511
21	Connecticut	0	0	492
22	Puerto Rico	268	195	445 <--higher
23	Pennsylvania	796	619	426
24	Washington	390	816	417
25	Nevada	636	532	409
26	New York	653	572	408
27	Wisconsin	950	453	392
28	Kentucky	801	463	370

**Sorted**  
Last 3-day trend growth rates

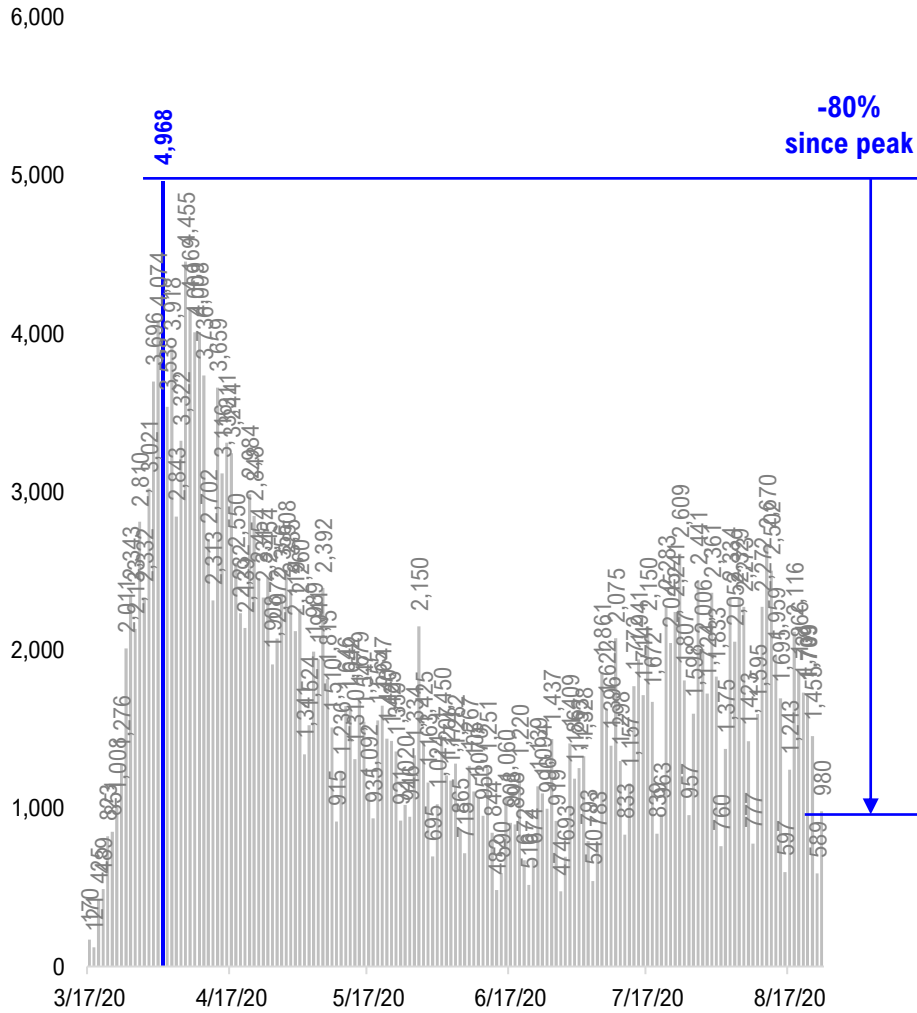
	8/22/20	8/23/20	8/24/20	
United States	45,624	37,073	32,640	-4,433
United States (ex-CA)	39,068	30,296	27,694	-2,602
<b>States:</b>				
29	Iowa	729	540	358
30	Oklahoma	853	566	357
31	Arkansas	547	375	320
32	Arizona	996	208	311
33	Utah	369	301	249
34	New Jersey	419	258	225
35	Oregon	289	225	220
36	Idaho	293	191	217
37	Colorado	297	260	198
38	Hawaii	280	248	169
39	Nebraska	154	109	158
40	South Dakota	251	141	149
41	North Dakota	262	140	124
42	Guam	0	53	87 <--higher
43	New Mexico	207	94	73
44	Alaska	89	64	69
45	Montana	159	62	52
46	District of Columbia	65	56	49
47	Delaware	58	67	47
48	West Virginia	119	87	40
49	Rhode Island	153	88	39
50	New Hampshire	21	15	27
51	Wyoming	19	36	24
52	U.S. Virgin Islands	28	0	24
53	Maine	32	18	21
54	Vermont	12	4	9
55	Northern Mariana Islands	0	0	0
56	American Samoa	0	0	0

<--higher – if the state has 20% or more daily cases than prior two days...  
Source: Fundstrat, COVID-19 Tracking Project, State Department of Health

# #7: US Daily Hospitalizations...(aggregated by data type)

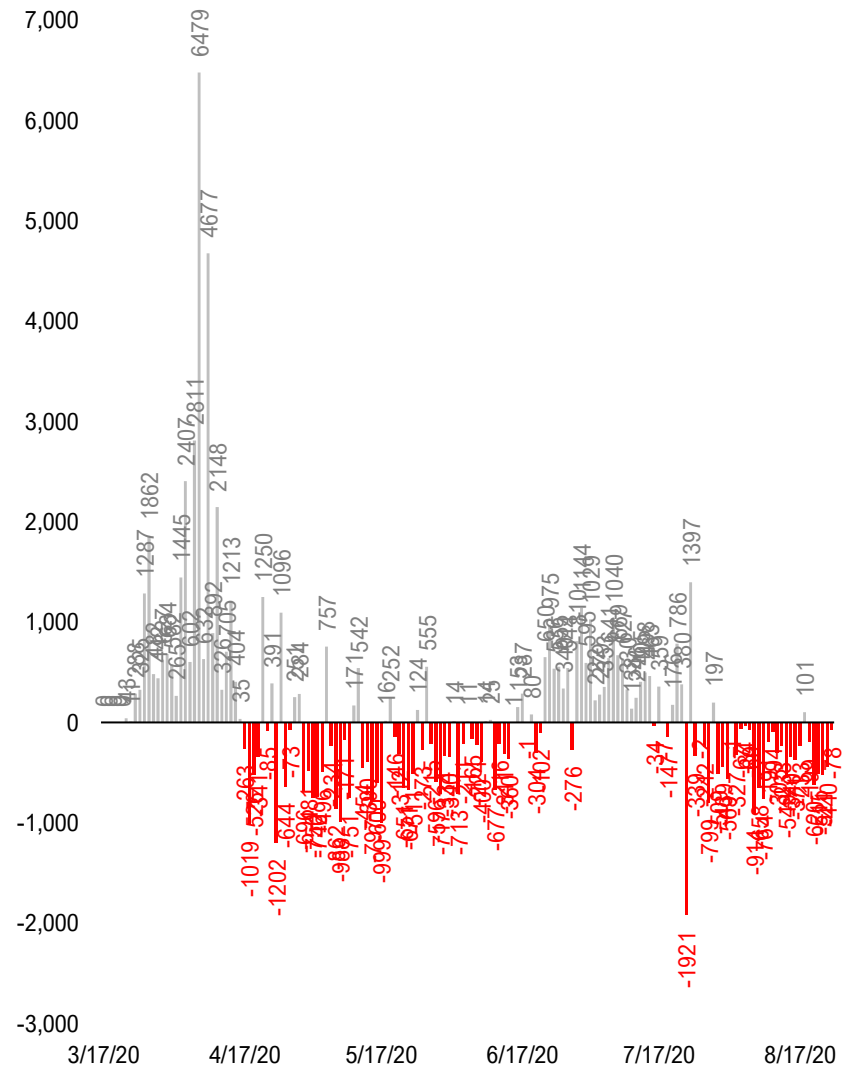
## US Gross Hospitalizations

(Composite of 33 states that report "gross hospitalizations")



## US Net Hospitalizations

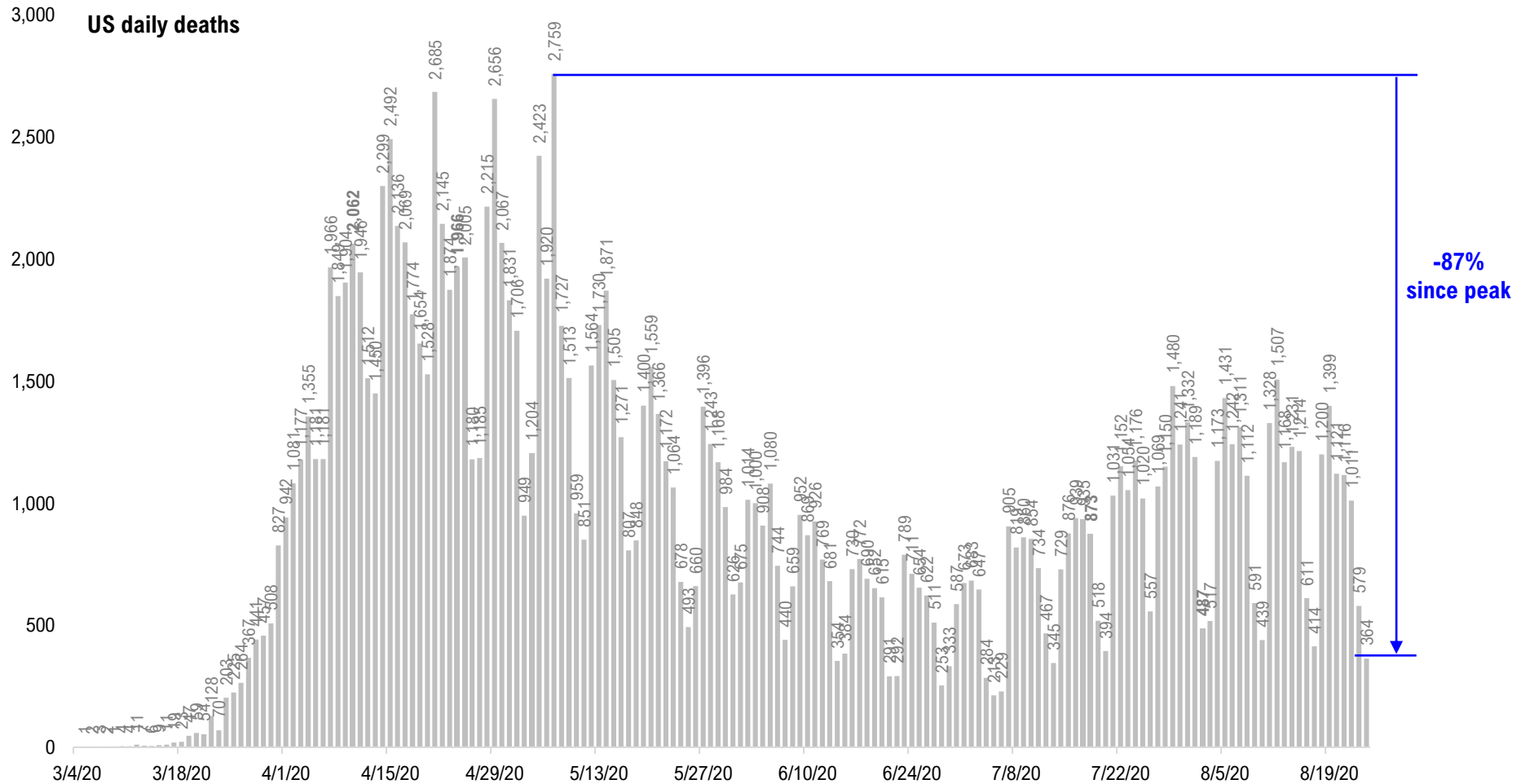
(Composite of 18 states that report "net/current hospitalizations")





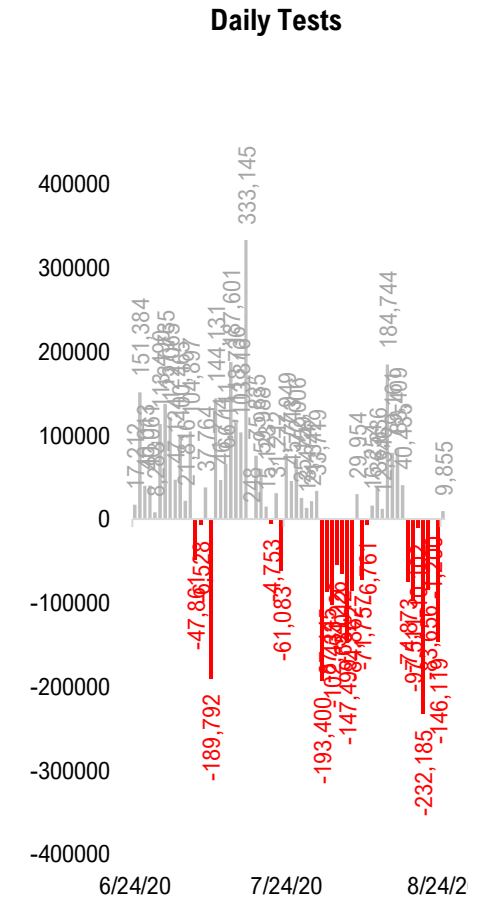
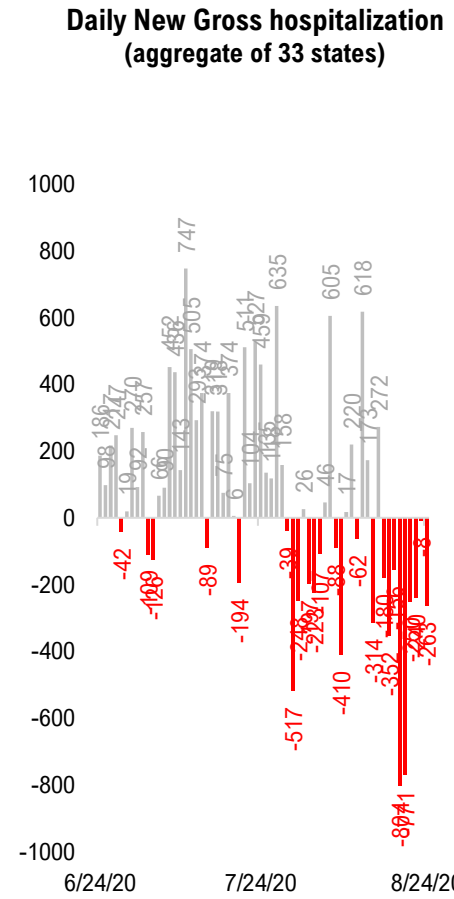
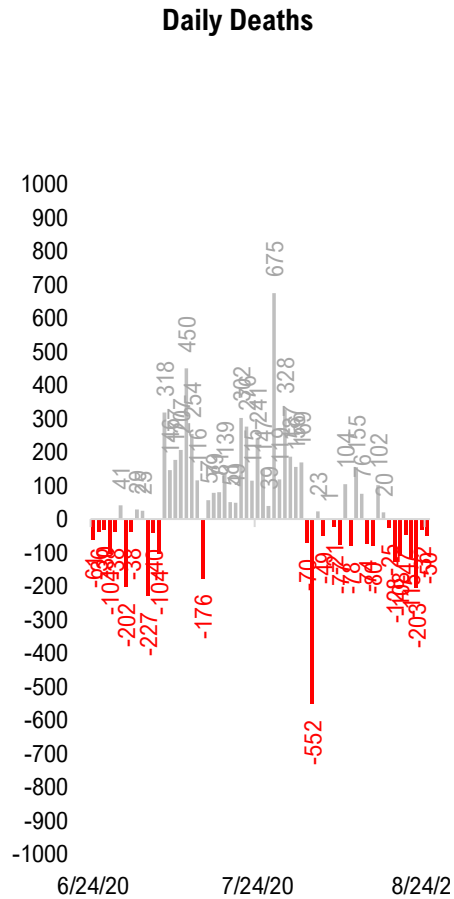
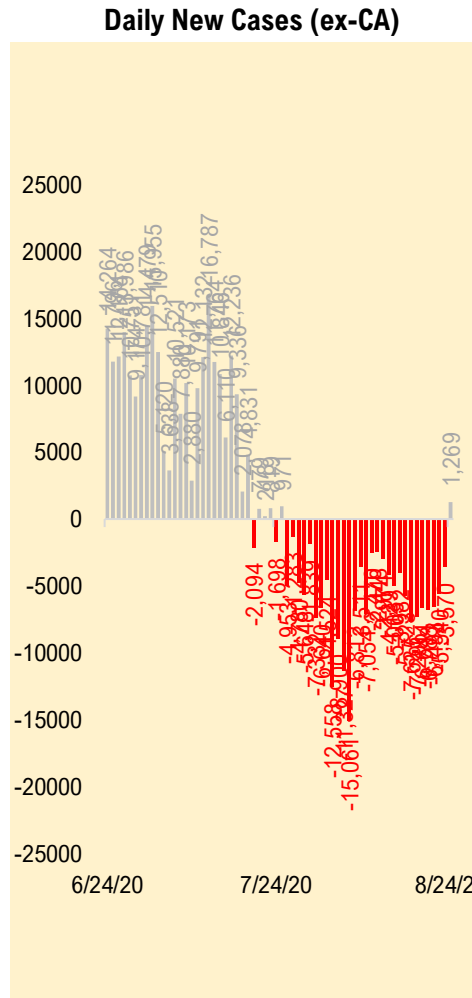
# #8: US Daily New Fatalities...

## US daily COVID-19 Fatalities



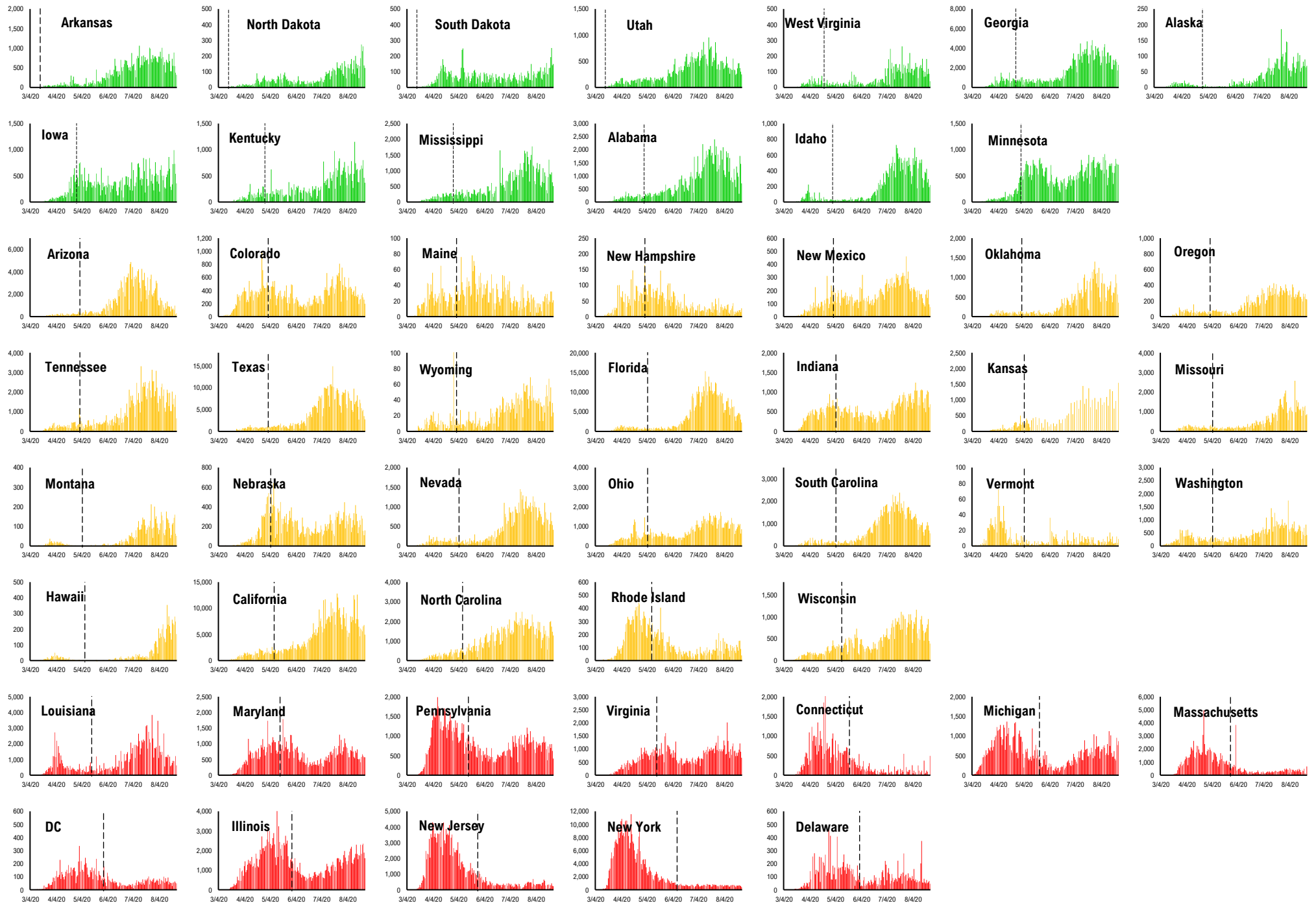
Source: Fundstrat, COVID-19 Tracking Project, State Department of Health

# #9: Rolling 7-Day Change in the Key Metrics... (Past 8 Weeks)

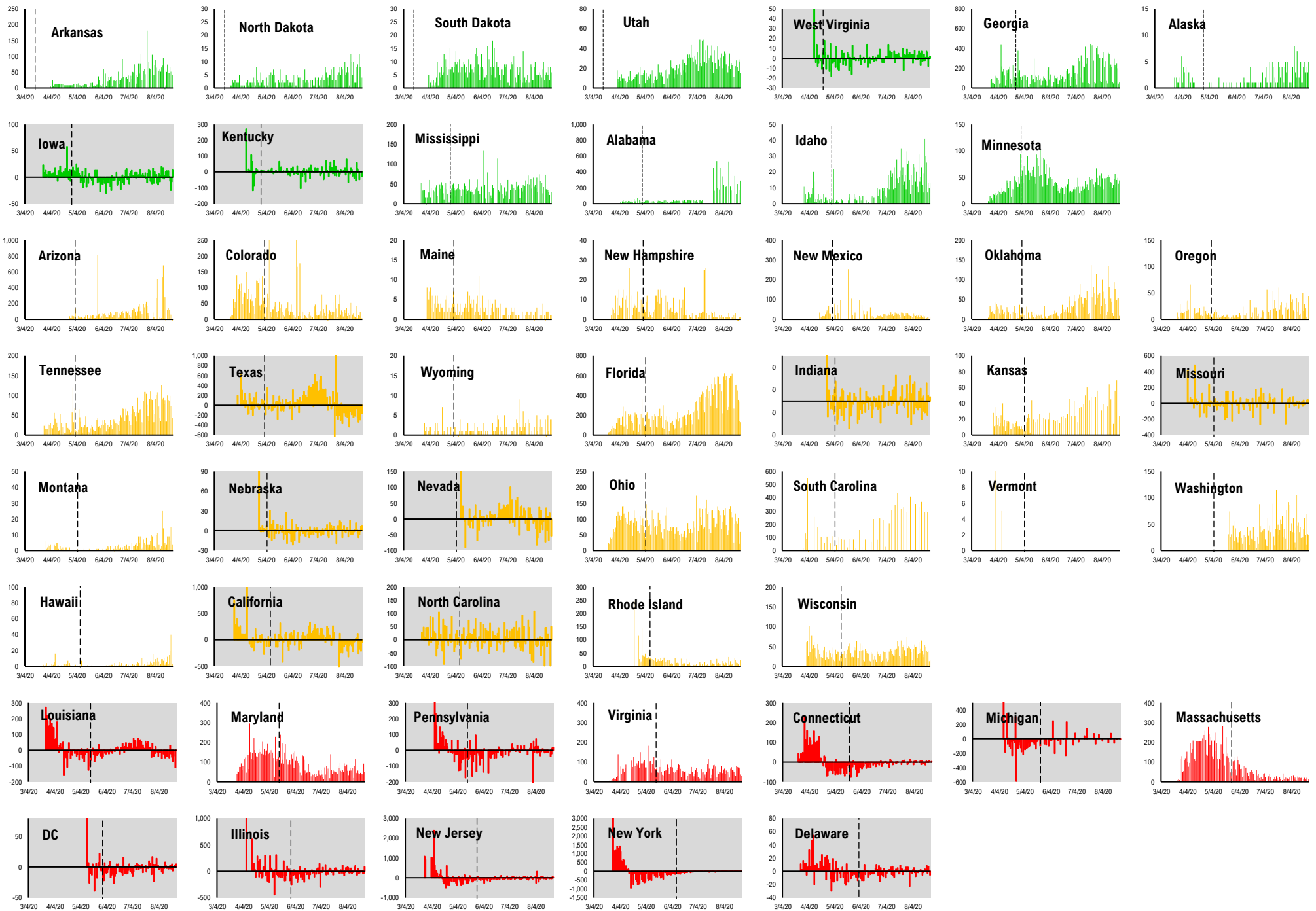


\* Ignored California since August 10, due to its data glitch caused 300,000-case backlog  
Source: Fundstrat, COVID-19 Tracking Project, State Department of Health

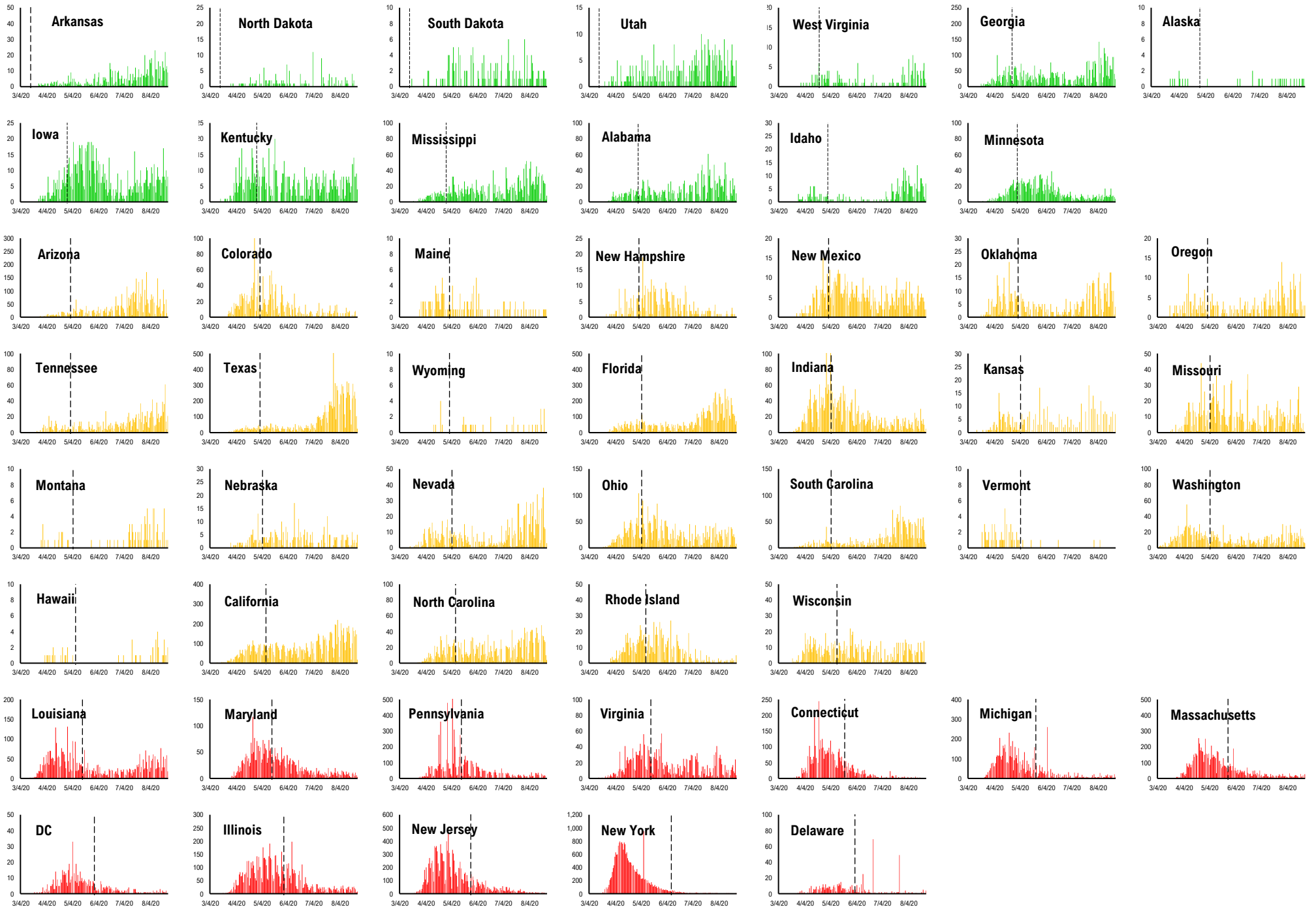
# #10: Daily New Cases by States... (sorted by "open" date)



# #11: Daily Hospitalizations by States... (sorted by "open" date)



# #12: Daily New Deaths by States... (sorted by "open" date)



# #13: State COVID-19 situation by Reopen Date...

Daily Cases

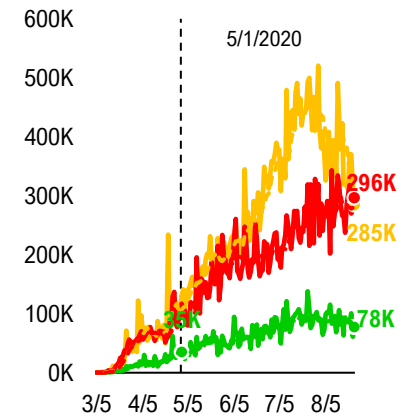
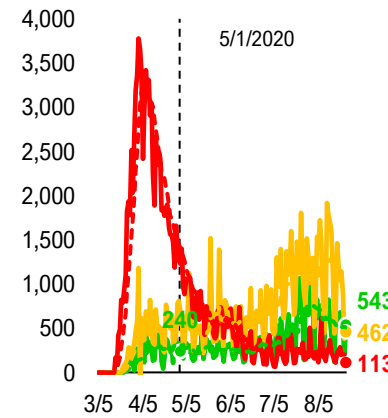
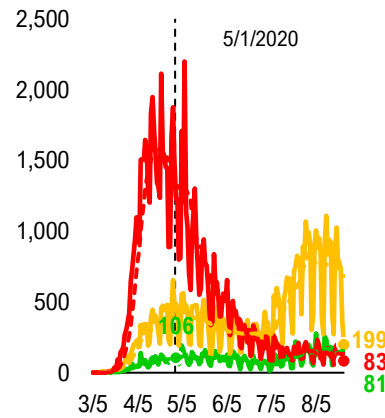
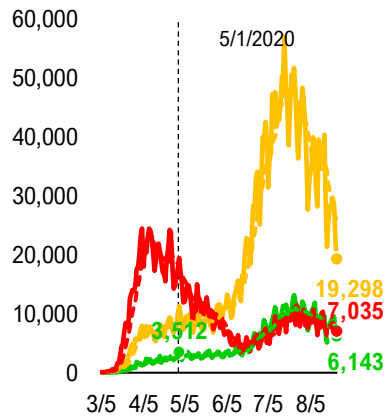
Daily Deaths

Daily Hospitalization

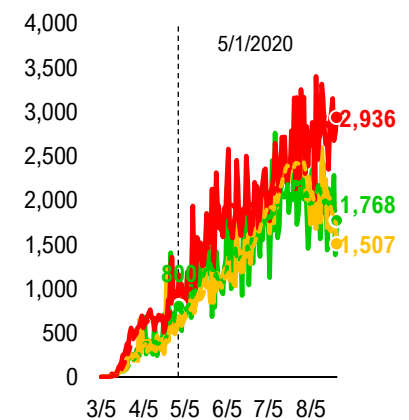
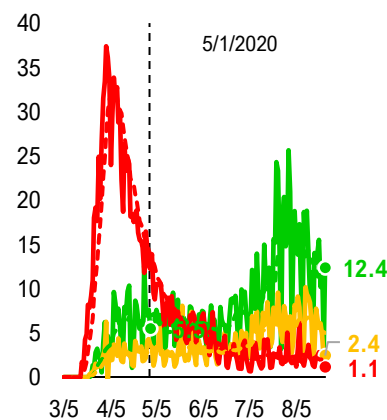
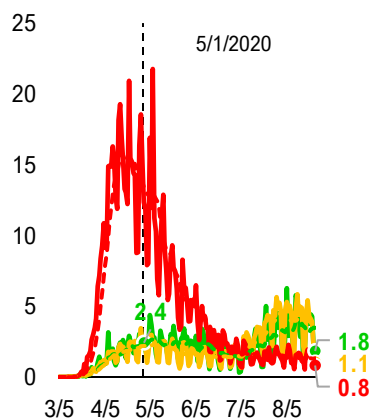
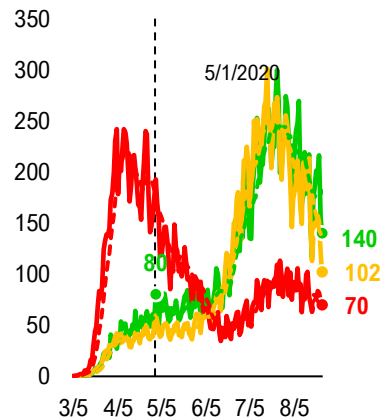
Daily Testing

— States Open Before 5/1    — States Open between 5/1 and 5/11    — States Open after 5/11

Composite Daily Aggregate

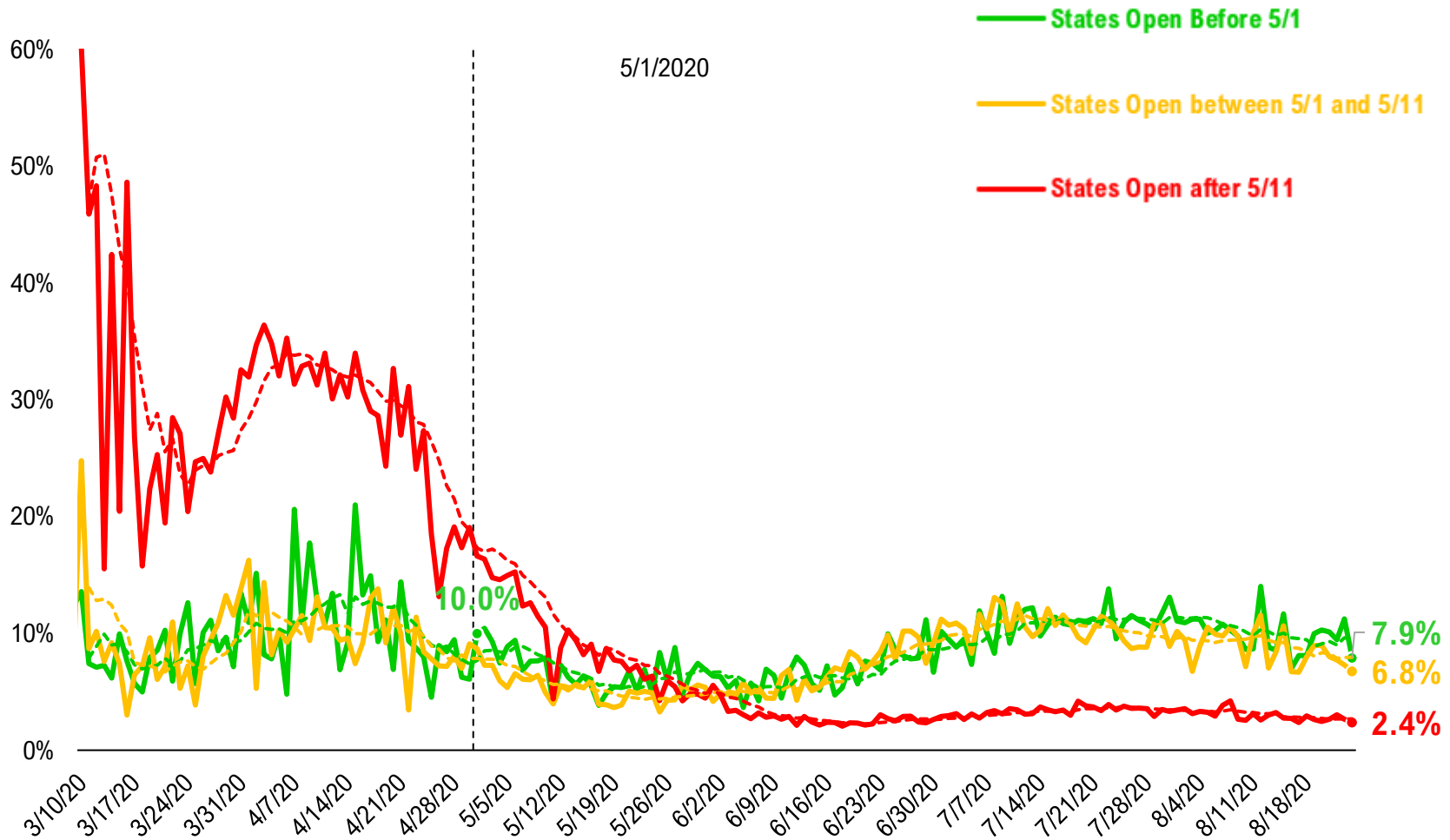


Composite Daily Aggregate Per 1mm Pop

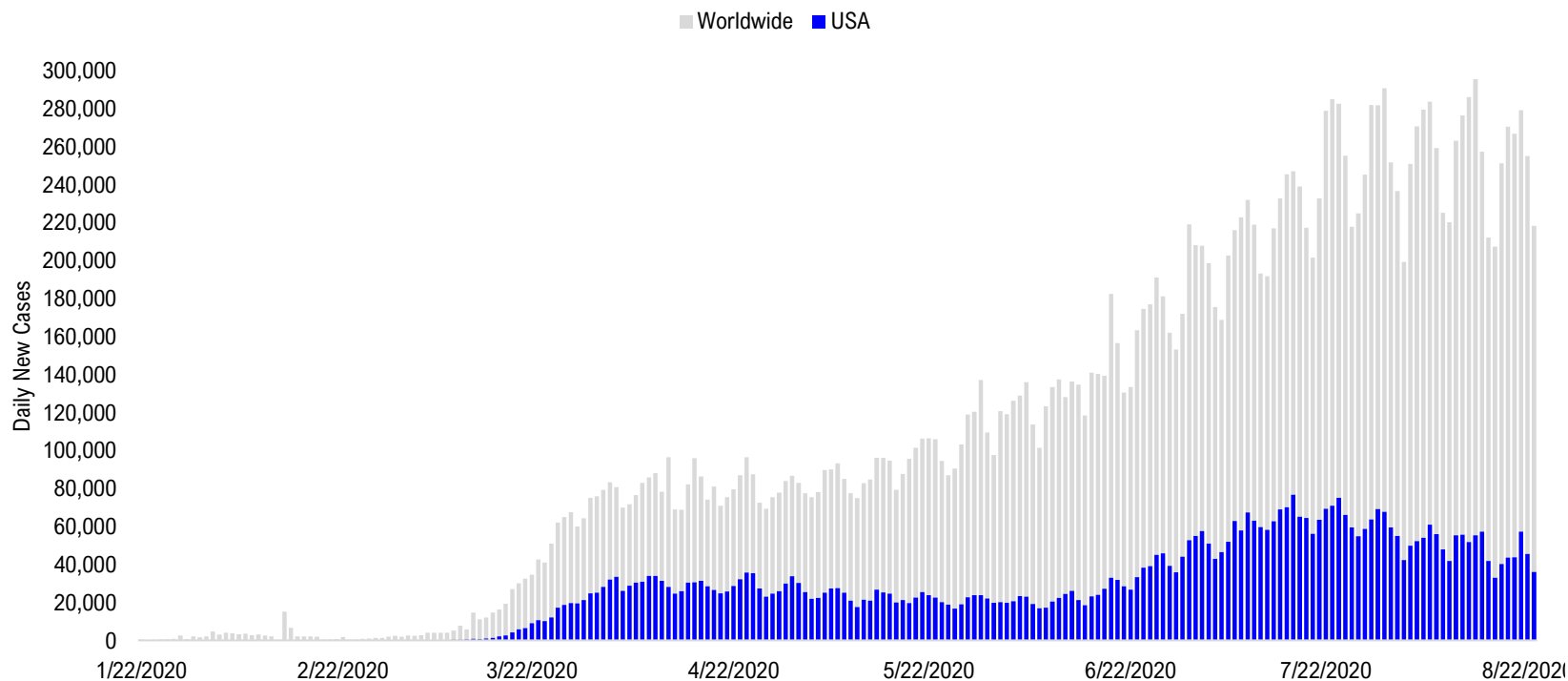


# #14: State COVID-19 Daily Positivity Rate by Reopen Date...

## Composite Daily Positivity Rate



# #15: Global COVID-19 Situation at a Glance...



4/10/2020	4/24/2020	5/8/2020	5/22/2020	6/5/2020	6/19/2020	7/3/2020	7/17/2020	7/31/2020	8/14/2020	8/23/2020
Europe 38,586	US + Canada 34,019	US + Canada 28,068	Latin America 33,875	Latin America 47,182	Latin America 58,570	Latin America 72,231	Latin America 72,602	Latin America 97,308	Latin America 100,636	Latin America 74,679
US + Canada 34,328	Europe 30,669	Europe 27,422	US + Canada 25,073	US + Canada 21,894	US + Canada 28,473	US + Canada 55,408	US + Canada 72,365	US + Canada 67,272	Pakistan + India + Bangladesh 68,924	Pakistan + India + Bangladesh 69,822
Latin America 5,790	Latin America 11,820	Latin America 18,868	Europe 19,514	Europe 18,212	Pakistan + India + Bangladesh 22,981	Pakistan + India + Bangladesh 27,389	Pakistan + India + Bangladesh 39,450	Pakistan + India + Bangladesh 58,625	US + Canada 54,663	US + Canada 46,664
Asia ex- India+Pakistan 1,638	Pakistan + India + Bangladesh 2,801	Pakistan + India + Bangladesh 5,721	Pakistan + India + Bangladesh 9,981	Pakistan + India + Bangladesh 16,820	Europe 18,730	Europe 16,249	Africa 19,290	Europe 20,876	Europe 28,288	Europe 29,767
Pakistan + India + Bangladesh 1,098	Asia ex- India+Pakistan 2,369	Africa 2,945	Africa 4,166	Africa 6,467	Africa 8,930	Africa 14,218	Europe 17,457	Africa 17,999	Africa 10,680	Africa 9,904
Africa 760	Africa 1,520	Asia ex- India+Pakistan 1,906	Asia ex- India+Pakistan 2,225	Asia ex- India+Pakistan 2,565	Asia ex- India+Pakistan 3,314	Asia ex- India+Pakistan 12,006	Asia ex- India+Pakistan 7,321	Asia ex- India+Pakistan 10,630	Asia ex- India+Pakistan 10,512	Asia ex- India+Pakistan 9,170



# Disclosures

This research is for the clients of FS Insight only. For important disclosures and rating histories regarding sectors or companies that are the subject of this report, please contact your sales representative or FS Insight at 150 East 52nd Street, New York, NY, 10022 USA.

## **Analyst Certification (Reg AC)**

Thomas J. Lee, the research analyst denoted by an “AC” on the cover of this report, hereby certifies that all of the views expressed in this report accurately reflect his personal views, which have not been influenced by considerations of the firm’s business or client relationships.

Neither I, nor a member of my household is an officer, director, or advisory board member of the issuer(s) or has another significant affiliation with the issuer(s) that is/are the subject of this research report. There is a possibility that we will from time to time have long or short positions in, and buy or sell, the securities or derivatives, if any, referred to in this research

## **Conflicts of Interest**

This research contains the views, opinions and recommendations of FS Insight . As of the time of writing and publication of this presentation, FS Insight does not know of, or have reason to know of any material conflicts of interest at the time of the publication of this presentation. The Company has no contractual relationship, nor have we received any compensation from any of the companies listed in this research report.

## **Analyst Industry/Sector Views**

Positive (+): The analyst expects the performance of his industry/sector coverage universe over the next 6-18 months to be attractive vs. the relevant broad market benchmark, being the S&P 500 for North America.

Neutral (N): The analyst expects the performance of his or her industry/sector coverage universe over the next 6-18 months to be in line with the relevant broad market benchmark, being the S&P 500 for North America.

Negative (-): The analyst expects his or her industry coverage universe over the next 6-18 months to underperform vs. the relevant broad market benchmark, being the S&P 500 for North America.

## **General Disclosures**

FS Insight is an independent research company and is not a registered investment advisor and is not acting as a broker dealer under any federal or state securities laws. FS Insight is a member of IRC Securities’ Research Prime Services Platform. IRC Securities is a FINRA registered broker-dealer that is focused on supporting the independent research industry. Certain personnel of FS Insight (i.e. Research Analysts) are registered representatives of IRC Securities, a FINRA member firm registered as a broker-dealer with the Securities and Exchange Commission and certain state securities regulators. As registered representatives and independent contractors of IRC Securities, such personnel may receive commissions paid to or shared with IRC Securities for transactions placed by FS Insight clients directly with IRC Securities or with securities firms that may share commissions with IRC Securities in accordance with applicable SEC and FINRA requirements. IRC Securities does not distribute the research of FS Insight , which is available to select institutional clients that have engaged FS Insight .

As registered representatives of IRC Securities our analysts must follow IRC Securities’ Written Supervisory Procedures. Notable compliance policies include (1) prohibition of insider trading or the facilitation thereof, (2) maintaining client confidentiality, (3) archival of electronic communications, and (4) appropriate use of electronic communications, amongst other compliance related policies.

FS Insight does not have the same conflicts that traditional sell-side research organizations have because FS Insight (1) does not conduct any investment banking activities, (2) does not manage any investment funds, and (3) our clients are only institutional investors.

This research is for the clients of FS Insight only. Additional information is available upon request. Information has been obtained from sources believed to be reliable but FS Insight does not warrant its completeness or accuracy except with respect to any disclosures relative to FS Insight and the analyst’s involvement (if any) with any of the subject companies of the research. All pricing is as of the market close for the securities discussed, unless otherwise stated. Opinions and estimates constitute our judgment as of the date of this material and are subject to change without notice. Past performance is not indicative of future results. This material is not intended as an offer or solicitation for the purchase or sale of any financial instrument. The opinions and recommendations herein do not take into account individual client circumstances, risk tolerance, objectives, or needs and are not intended as recommendations of particular securities, financial instruments or strategies. The recipient of this report must make its own independent decision regarding any securities or financial instruments mentioned herein. Except in circumstances where FS Insight expressly agrees otherwise in writing, FS Insight is not acting as a municipal advisor and the opinions or views contained herein are not intended to be, and do not constitute, advice, including within the meaning of Section 15B of the Securities Exchange Act of 1934. All research reports are disseminated and available to all clients simultaneously through electronic publication to our internal client website, FS Insight .com. Not all research content is redistributed to our clients or made available to third-party aggregators or the media. Please contact your sales representative if you would like to receive any of our research publications.

**Copyright 2020 FS Insight LLC. All rights reserved. No part of this material may be reprinted, sold or redistributed without the prior written consent of FS Insight LLC.**