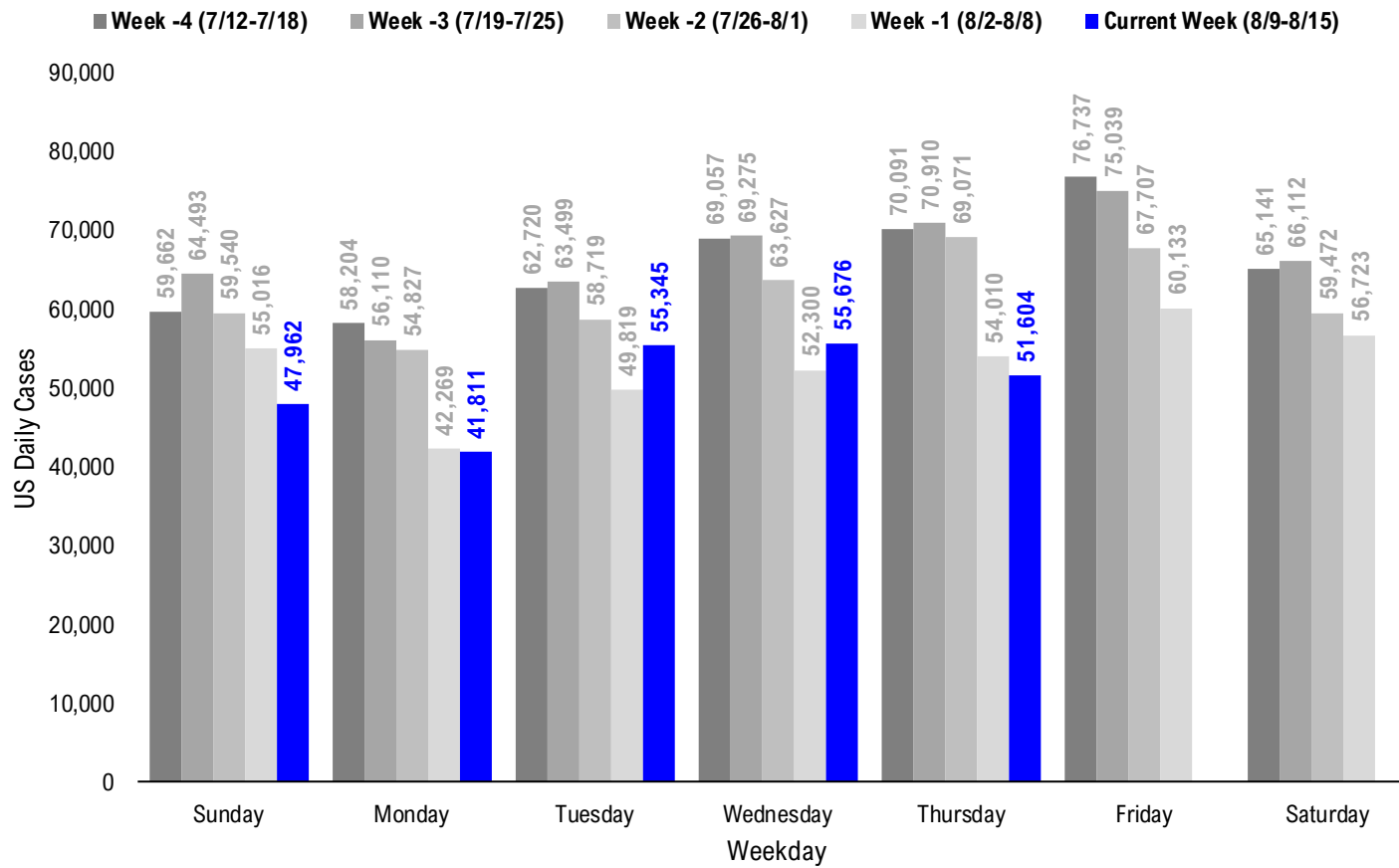


# FSInsight Daily COVID-19 Chartbook





# #2: USA COVID-19 Daily Cases Weekday Seasonality (Past 4 Weeks) ...



# #3: USA State COVID-19 Situation at a Glance...

	% US Pop	Sorted Daily Cases		Daily Cases (3D avg) per 1mm residents		Since Peak		% Decline in Daily Cases
		8/13/20	7D Delta	8/13/20	7D Delta	# Days	Cases	
United States	100%	51,604	-2,406	165	+7	27	-25%	
United States (ex-CA)	88%	44,519	-4,233	150	-11	27	-32%	

**States:**

1	California	11.9%	7,085	+1,827	263	+136	20	-10%
2	Texas	8.7%	6,755	-843	262	-31	27	-37%
3	Florida	6.5%	6,236	-1,414	313	+26	31	-47%
4	Georgia	3.2%	2,515	-667	303	+6	19	-25%
5	Tennessee	2.1%	2,118	-134	224	-55	16	-44%
6	Illinois	3.8%	1,834	-119	132	-4	91	-44%
7	North Carolina	3.2%	1,763	-216	126	-24	26	-41%
8	Arizona	2.2%	1,351	-93	150	-40	42	-75%
9	Missouri	1.8%	1,267	+205	209	+19	14	-34%
10	Ohio	3.5%	1,178	+12	105	+5	13	-21%
11	Louisiana	1.4%	1,135	-168	249	-85	23	-56%
12	Michigan	3.0%	1,121	+399	81	+13	111	-34%
13	Virginia	2.6%	1,101	+283	112	+4	4	-32%
14	Indiana	2.0%	1,043	+3	127	-0	4	-22%
15	Pennsylvania	3.9%	991	+184	69	+8	125	-51%
16	Wisconsin	1.8%	943	+104	123	-18	19	-29%
17	South Carolina	1.6%	935	-390	178	-71	32	-54%
18	Maryland	1.8%	776	+197	105	+2	84	-50%
19	Alabama	1.5%	771	-1,167	172	-95	19	-60%
20	Kentucky	1.3%	741	+228	181	+51	0	0%
21	New York	5.9%	737	+34	36	+0	125	-93%
22	Oklahoma	1.2%	705	-132	180	-56	16	-42%
23	Minnesota	1.7%	690	-171	87	-36	18	-39%
24	New Jersey	2.7%	656	+282	59	+18	130	-87%
25	Arkansas	0.9%	652	-83	192	-77	19	-36%
26	Mississippi	0.9%	612	-344	262	-105	14	-49%
27	Nevada	0.9%	602	-127	182	-74	26	-58%
28	Washington	2.3%	551	-154	71	-12	29	-47%

	% US Pop	Sorted Daily Cases		Daily Cases (3D avg) per 1mm residents		Since Peak		% Decline in Daily Cases
		8/13/20	7D Delta	8/13/20	7D Delta	# Days	Cases	
United States	100%	51,604	-2,406	165	+7	27	-25%	
United States (ex-CA)	88%	44,519	-4,233	150	-11	27	-32%	

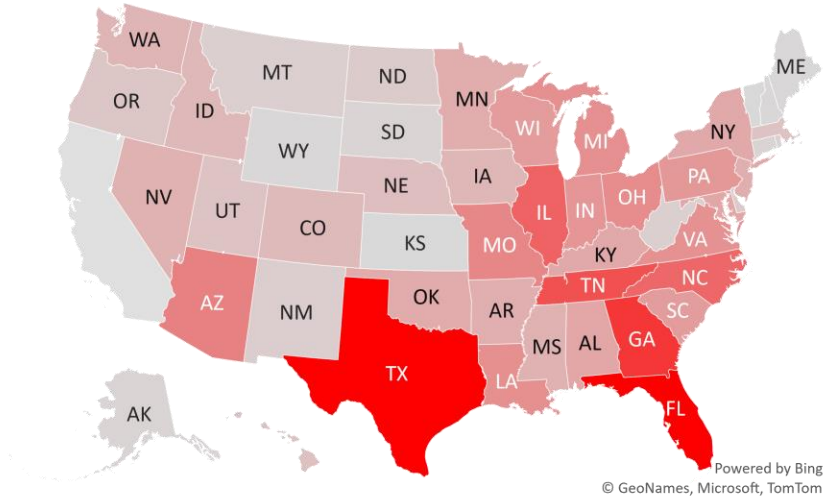
**States:**

29	Iowa	1.0%	530	-172	134	-27	33	-41%
30	Idaho	0.5%	498	-194	286	-36	27	-25%
31	Colorado	1.7%	463	+15	68	-17	109	-46%
32	Nebraska	0.6%	416	+84	166	+17	103	-37%
33	Hawaii	0.4%	354	+203	159	+49	0	0%
34	Utah	1.0%	334	-253	108	-37	26	-58%
35	Massachusetts	2.1%	319	+88	49	-10	110	-90%
36	Oregon	1.3%	278	+32	64	-4	12	-26%
37	Delaware	0.3%	202	+133	114	+8	107	-67%
38	North Dakota	0.2%	201	+81	200	+29	0	0%
39	New Mexico	0.6%	171	-36	86	-16	15	-50%
40	West Virginia	0.5%	143	+25	74	+17	34	-24%
41	Montana	0.3%	142	-31	125	+9	13	-18%
42	Rhode Island	0.3%	111	-19	96	-19	110	-76%
43	Puerto Rico	1.0%	110	-30	100	+26	1	-22%
44	South Dakota	0.3%	82	-23	88	-7	96	-62%
45	Alaska	0.2%	82	+47	86	+21	11	-53%
46	Connecticut	1.1%	76	+56	20	+3	113	-95%
47	District of Columbia	0.2%	65	-10	102	+6	102	-69%
48	U.S. Virgin Islands	0.0%	43	+23	421	+227	0	0%
49	New Hampshire	0.4%	34	+11	20	-0	103	-78%
50	Wyoming	0.2%	33	-2	44	-19	106	-56%
51	Guam	0.0%	28	+20	119	+60	0	0%
52	Maine	0.4%	19	+14	10	+3	83	-81%
53	Vermont	0.2%	6	-3	12	+2	130	-87%
54	Northern Mariana Islands	0.0%	0	-1	0	-6	132	-100%
55	Kansas	0.9%	0	+0	93	-3	29	-65%
56	American Samoa	0.0%	0	+0	0	+0	-	-

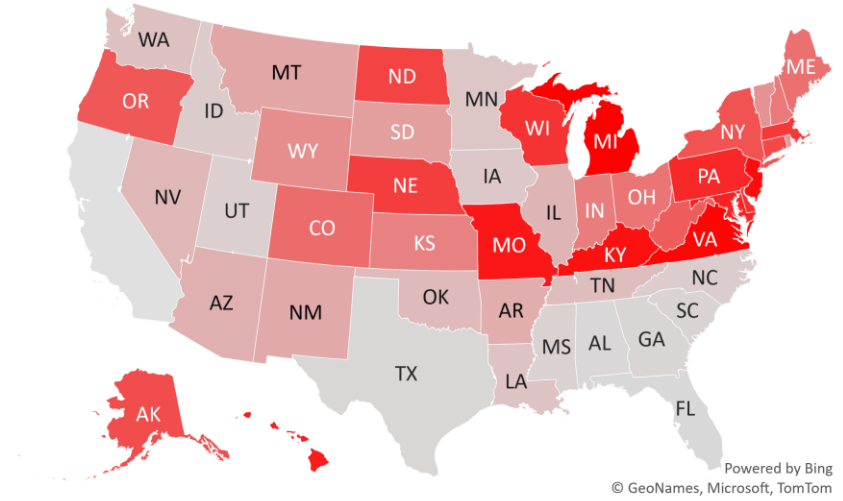
\* Ignored California in the 7D Delta of Daily Cases since August 10, due to its data glitch caused 300,000-case backlog  
 Source: Fundstrat, COVID-19 Tracking Project, State Department of Health

# #4: USA COVID-19 Heat Map...

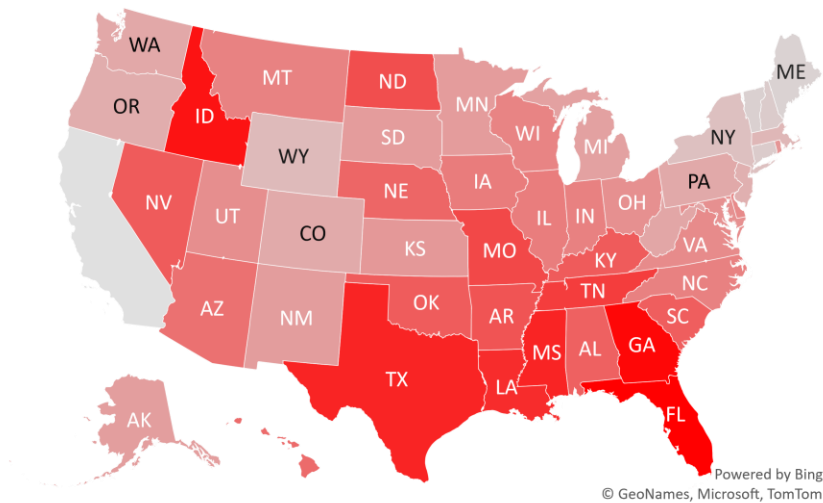
### Daily Case Increases



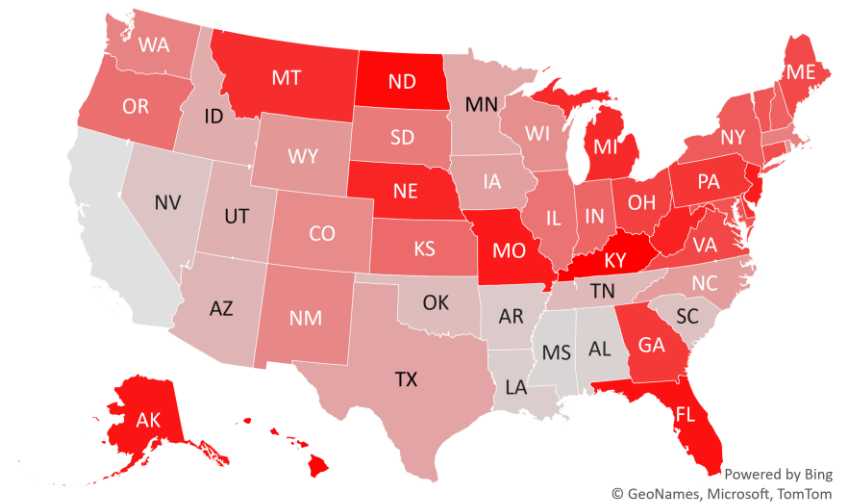
### 7D Delta in Daily New Cases



### Daily Case Increases per 1mm Resident (3D Avg)



### 7D Delta in Daily New Cases per 1mm (3D Avg)



\* California is ignored in the heatmaps due to its data glitch which caused 300,000-case backlog  
Source: Fundstrat, COVID-19 Tracking Project, State Department of Health



# #6: US New Cases by States... (sorted by today's new cases)

**Sorted**  
Last 3-day trend growth rates

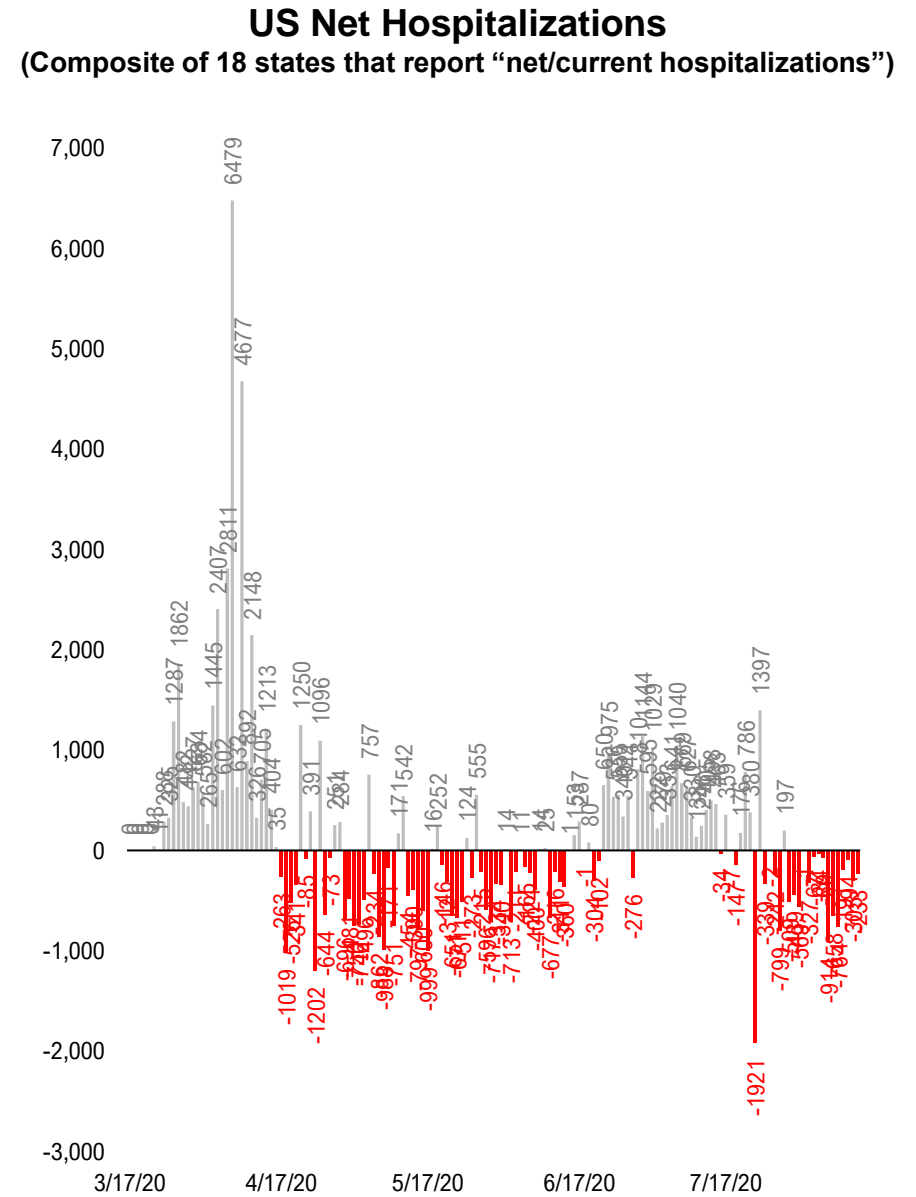
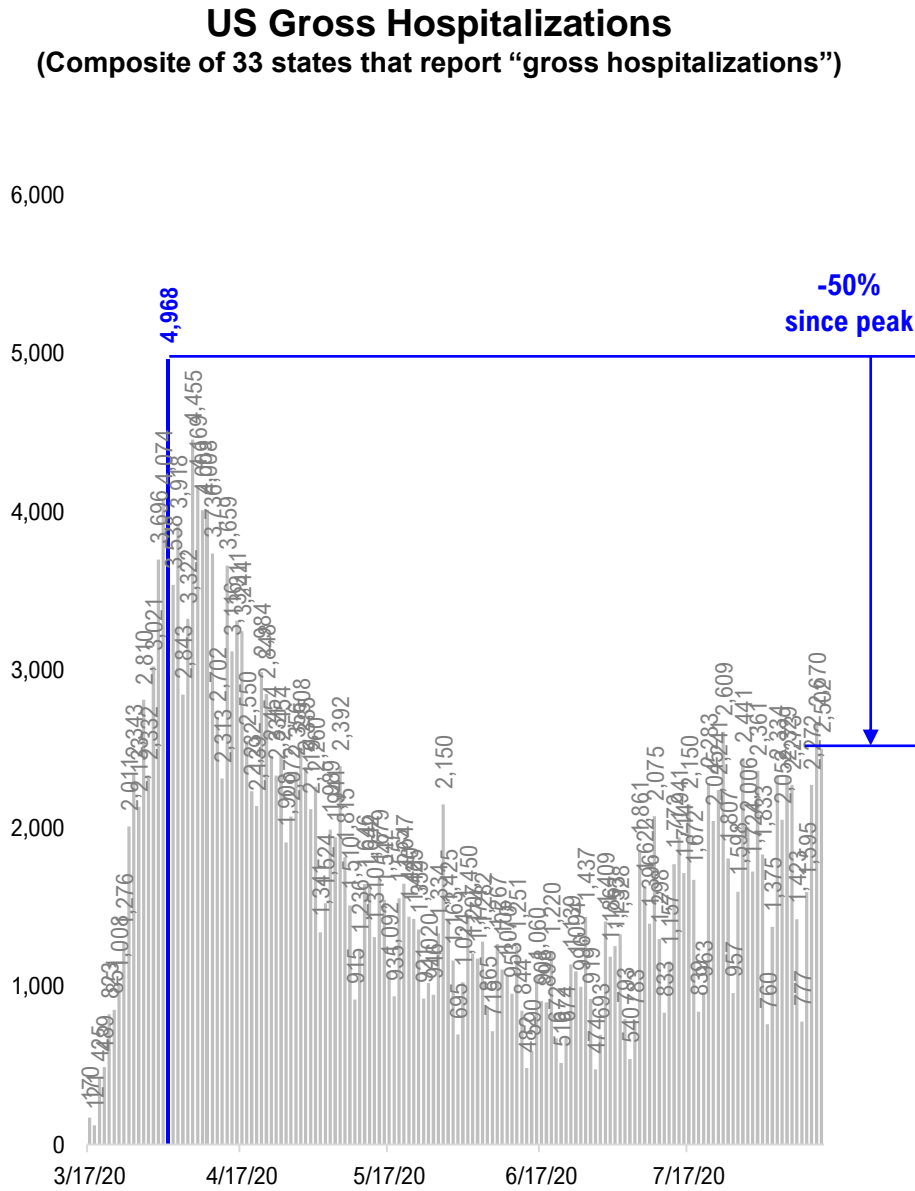
	8/11/20	8/12/20	8/13/20		
United States	55,345	55,676	51,604	-4,072	
United States (ex-CA)	42,845	44,031	44,519	+488	
<b>States:</b>					
1	California	12,500	11,645	7,085	
2	Texas	9,803	6,200	6,755	
3	Florida	5,831	8,109	6,236	
4	Georgia	3,563	3,565	2,515	
5	Tennessee	1,001	1,478	2,118	<--higher
6	Illinois	1,549	1,645	1,834	
7	North Carolina	1,051	1,166	1,763	<--higher
8	Arizona	1,214	706	1,351	
9	Missouri	981	1,595	1,267	
10	Ohio	1,095	1,422	1,178	
11	Louisiana	1,164	1,179	1,135	
12	Michigan	796	515	1,121	<--higher
13	Virginia	996	776	1,101	
14	Indiana	870	660	1,043	
15	Pennsylvania	828	849	991	
16	Wisconsin	724	478	943	<--higher
17	South Carolina	971	844	935	
18	Maryland	585	541	776	<--higher
19	Alabama	831	935	771	
20	Kentucky	539	1,152	741	
21	New York	667	700	737	
22	Oklahoma	765	670	705	
23	Minnesota	323	464	690	<--higher
24	New Jersey	444	463	656	<--higher
25	Arkansas	383	703	652	
26	Mississippi	644	1,081	612	
27	Nevada	548	528	602	
28	Washington	575	504	551	

**Sorted**  
Last 3-day trend growth rates

	8/11/20	8/12/20	8/13/20		
United States	55,345	55,676	51,604	-4,072	
United States (ex-CA)	42,845	44,031	44,519	+488	
<b>States:</b>					
29	Iowa	258	477	530	
30	Idaho	495	538	498	
31	Colorado	402	315	463	
32	Nebraska	334	214	416	<--higher
33	Hawaii	118	202	354	<--higher
34	Utah	362	338	334	
35	Massachusetts	392	293	319	
36	Oregon	286	248	278	
37	Delaware	65	66	202	<--higher
38	North Dakota	172	85	201	
39	New Mexico	199	173	171	
40	West Virginia	121	133	143	
41	Montana	83	175	142	
42	Rhode Island	119	76	111	
43	Puerto Rico	286	564	110	
44	South Dakota	50	102	82	
45	Alaska	46	60	82	<--higher
46	Connecticut	117	22	76	
47	District of Columbia	89	63	65	
48	U.S. Virgin Islands	29	63	43	
49	New Hampshire	21	26	34	<--higher
50	Wyoming	31	13	33	
51	Guam	16	15	28	
52	Maine	1	20	19	
53	Vermont	12	5	6	
54	Northern Mariana Islands	0	0	0	
55	Kansas	0	817	0	
56	American Samoa	0	0	0	

<--higher – if the state has 20% or more daily cases than prior two days...  
Source: Fundstrat, COVID-19 Tracking Project, State Department of Health

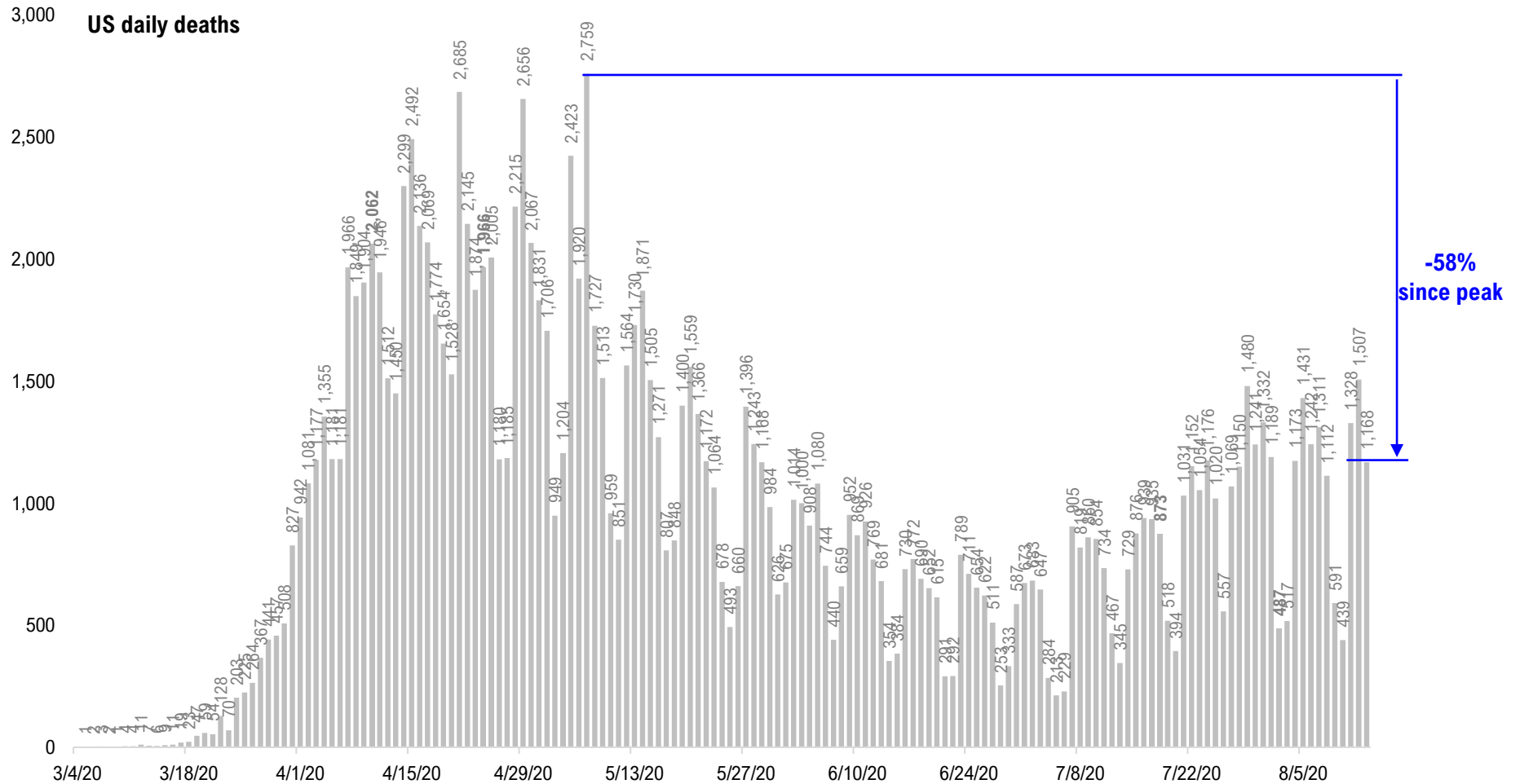
# #7: US Daily Hospitalizations...(aggregated by data type)





# #8: US Daily New Fatalities...

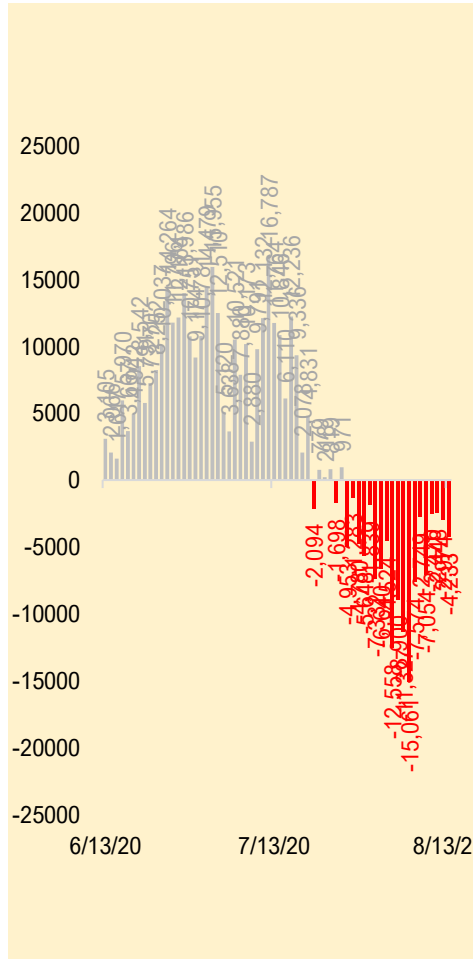
## US daily COVID-19 Fatalities



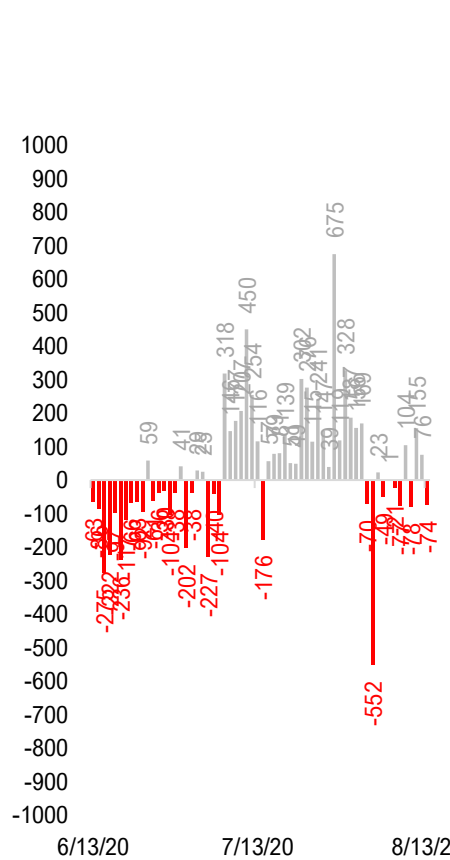
Source: Fundstrat, COVID-19 Tracking Project, State Department of Health

# #9: Rolling 7-Day Change in the Key Metrics... (Past 8 Weeks)

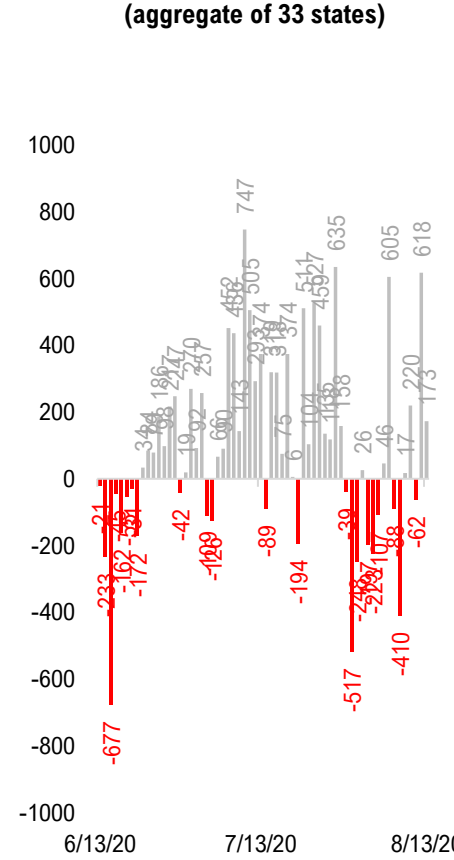
### Daily New Cases (ex-CA)



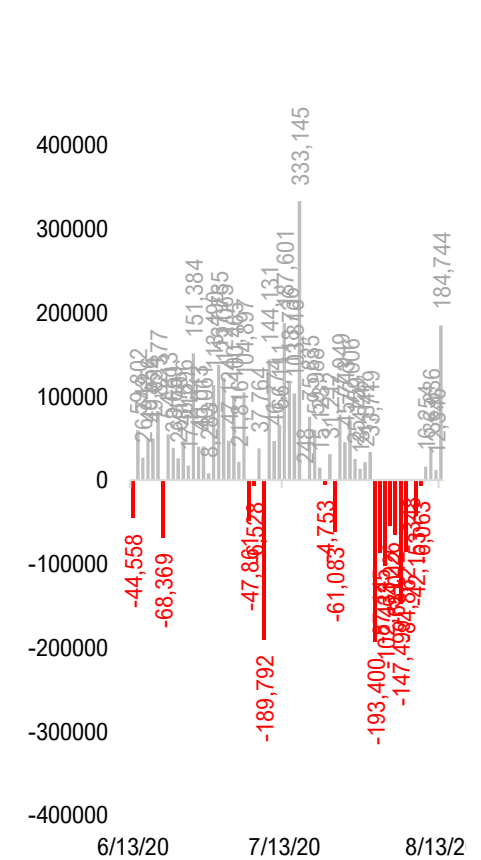
### Daily Deaths



### Daily New Gross hospitalization (aggregate of 33 states)

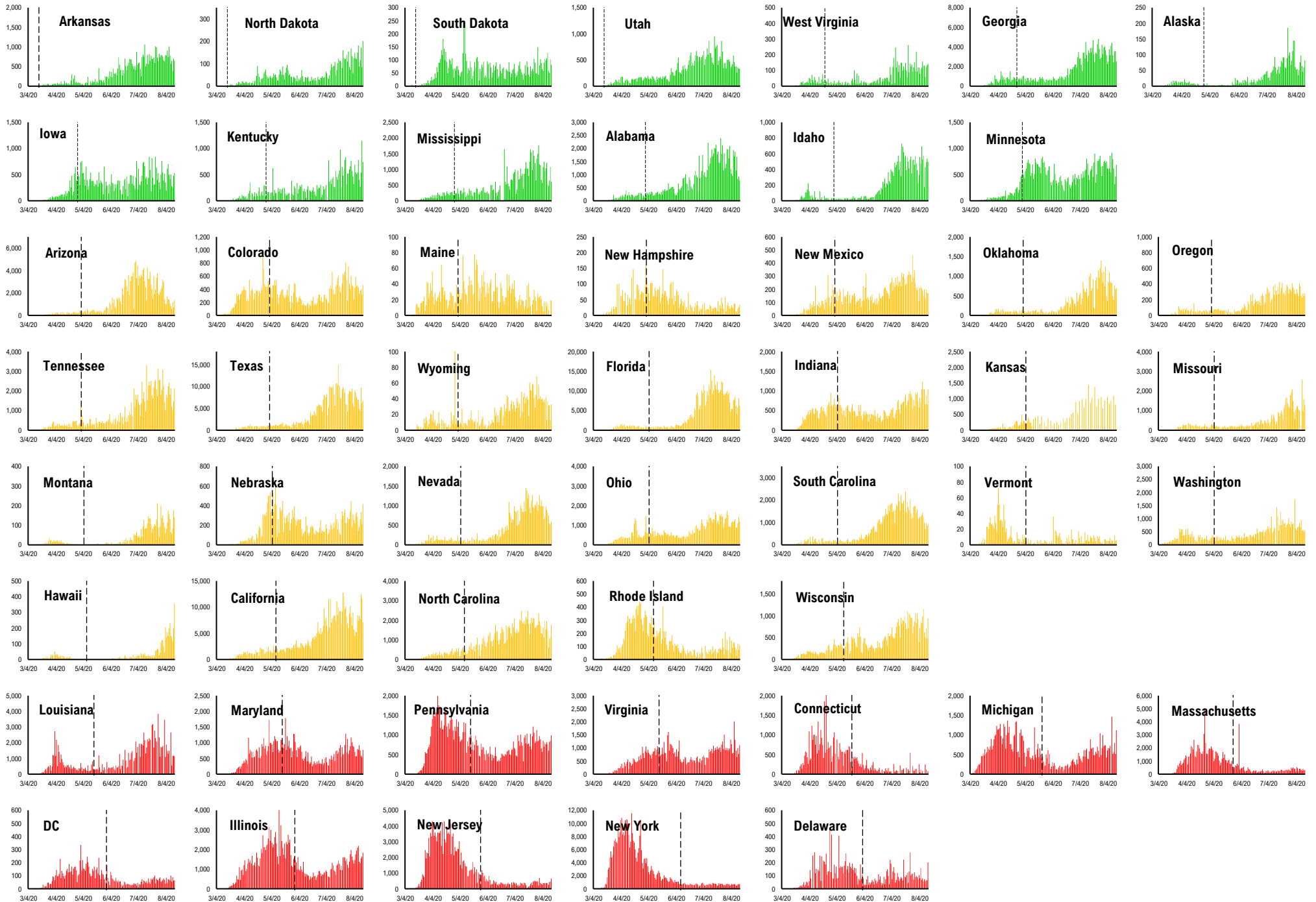


### Daily Tests

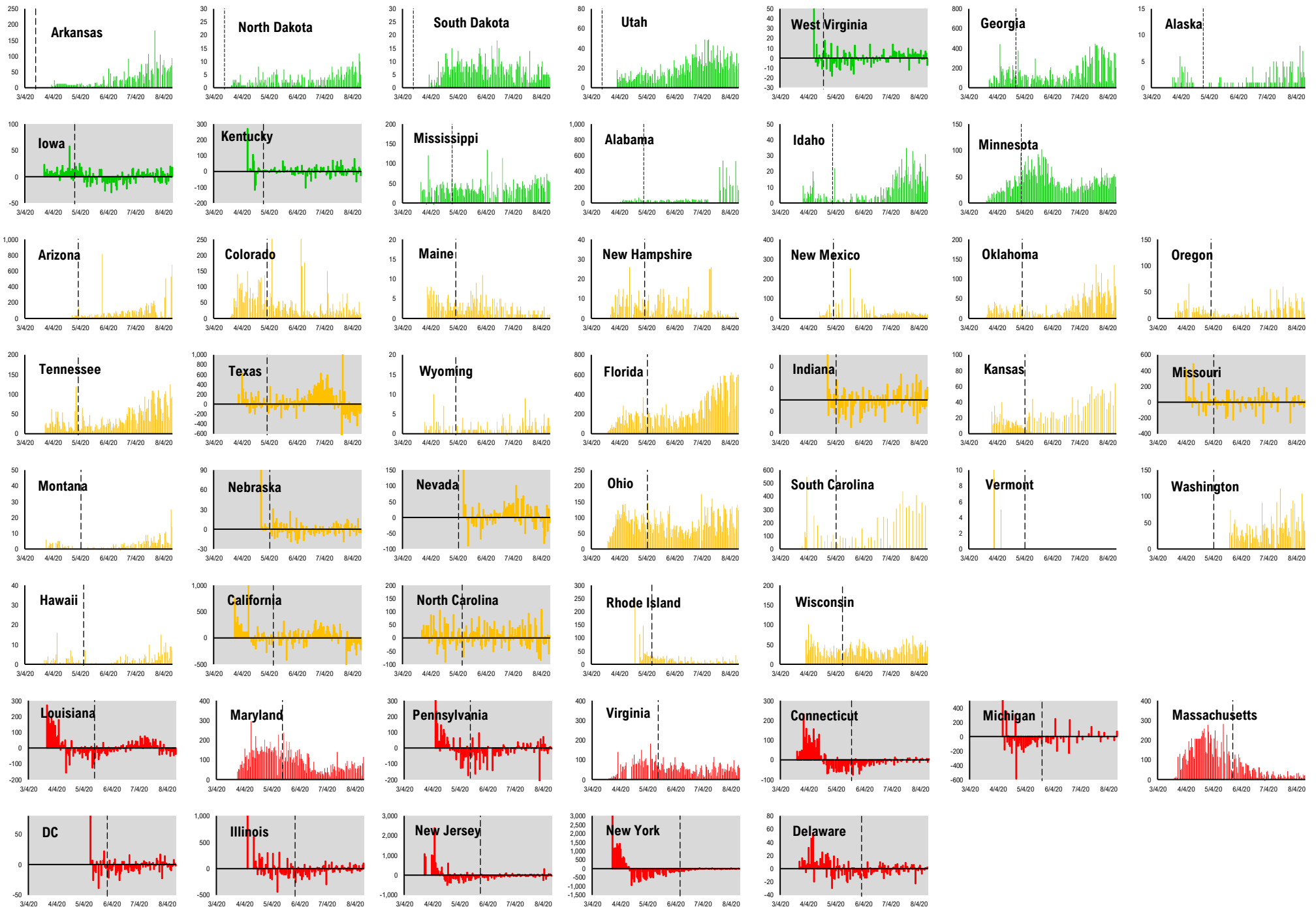


\* Ignored California since August 10, due to its data glitch caused 300,000-case backlog  
Source: Fundstrat, COVID-19 Tracking Project, State Department of Health

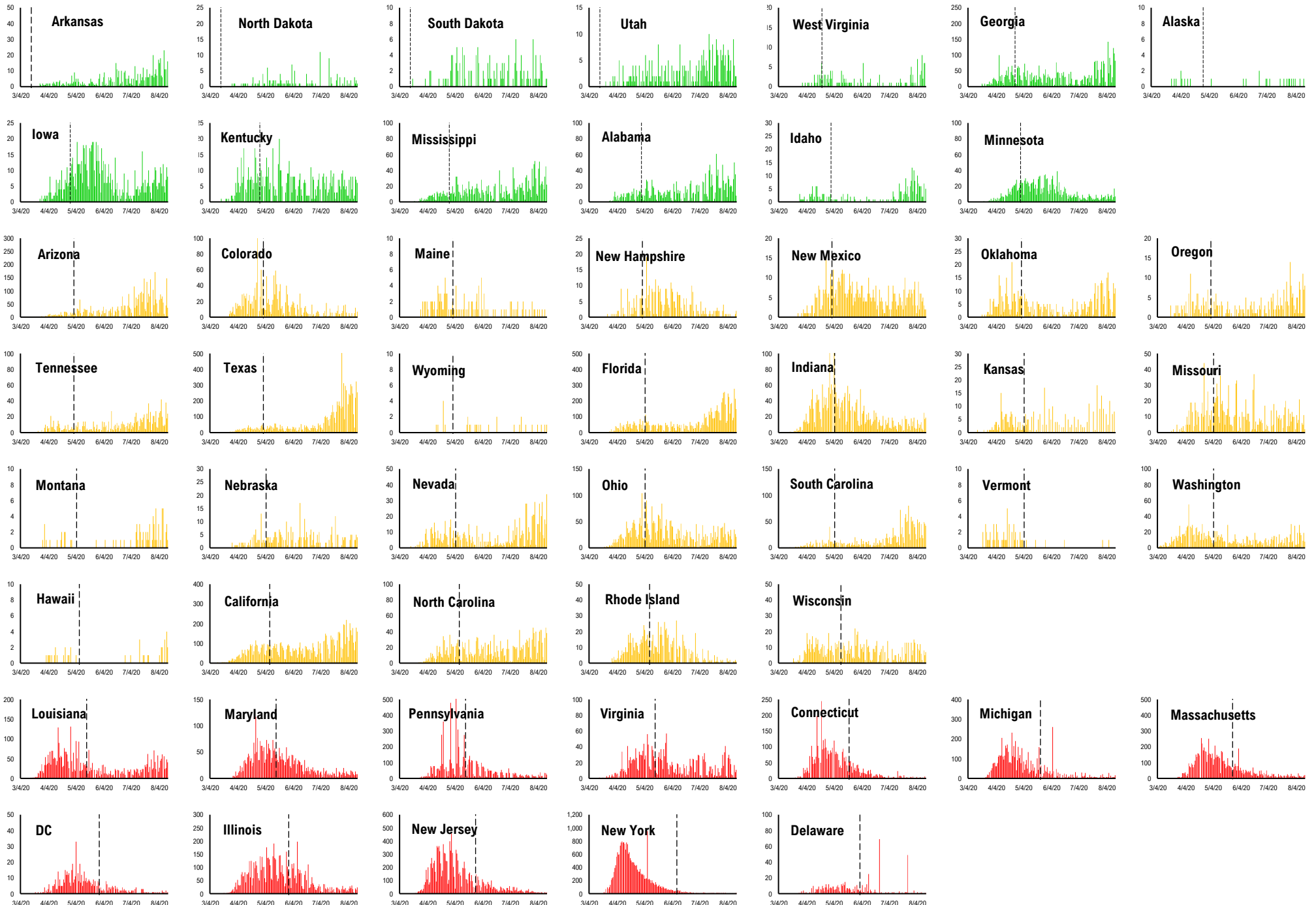
# #10: Daily New Cases by States... (sorted by "open" date)



# #11: Daily Hospitalizations by States... (sorted by "open" date)



# #12: Daily New Deaths by States... (sorted by "open" date)



# #13: State COVID-19 situation by Reopen Date...

**Daily Cases**

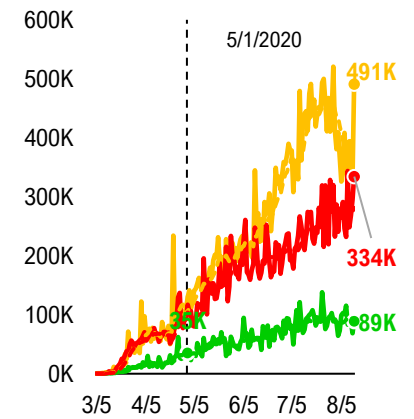
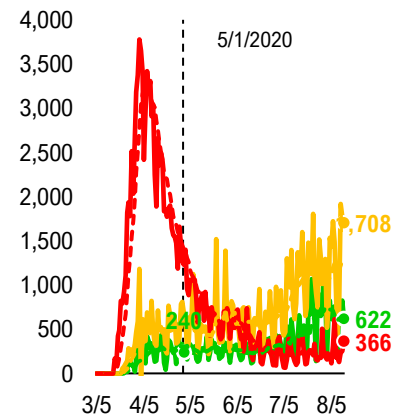
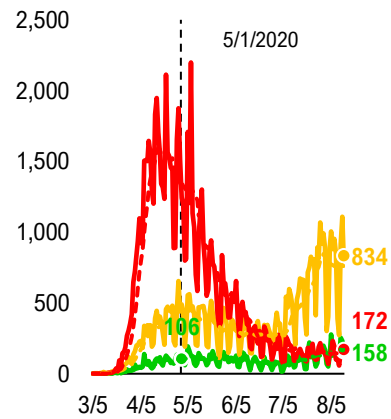
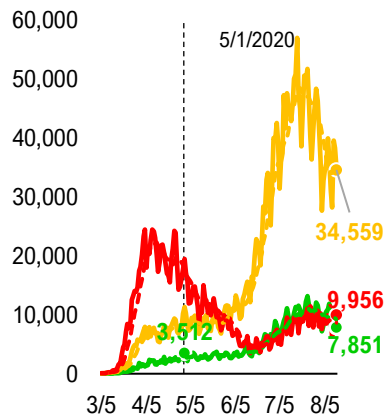
**Daily Deaths**

**Daily Hospitalization**

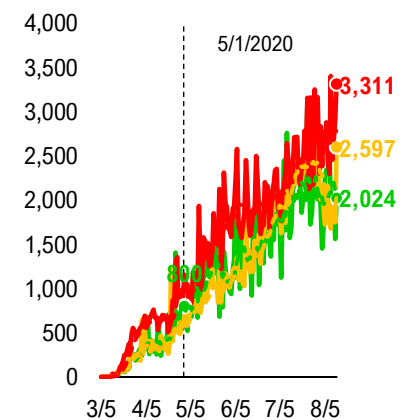
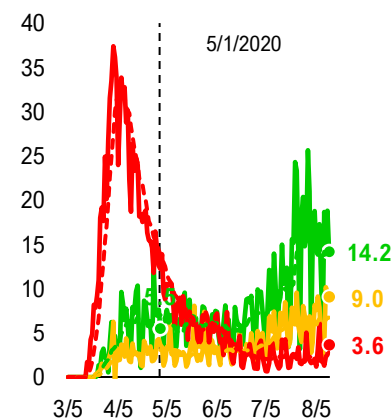
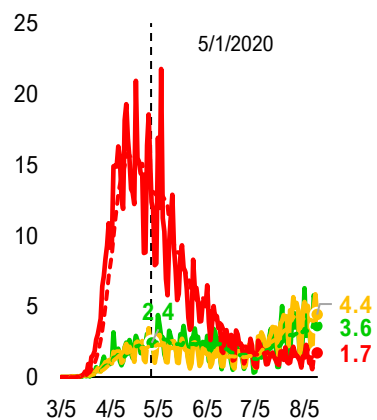
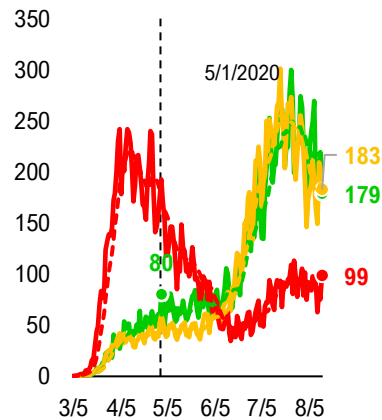
**Daily Testing**

— States Open Before 5/1    — States Open between 5/1 and 5/11    — States Open after 5/11

**Composite Daily Aggregate**

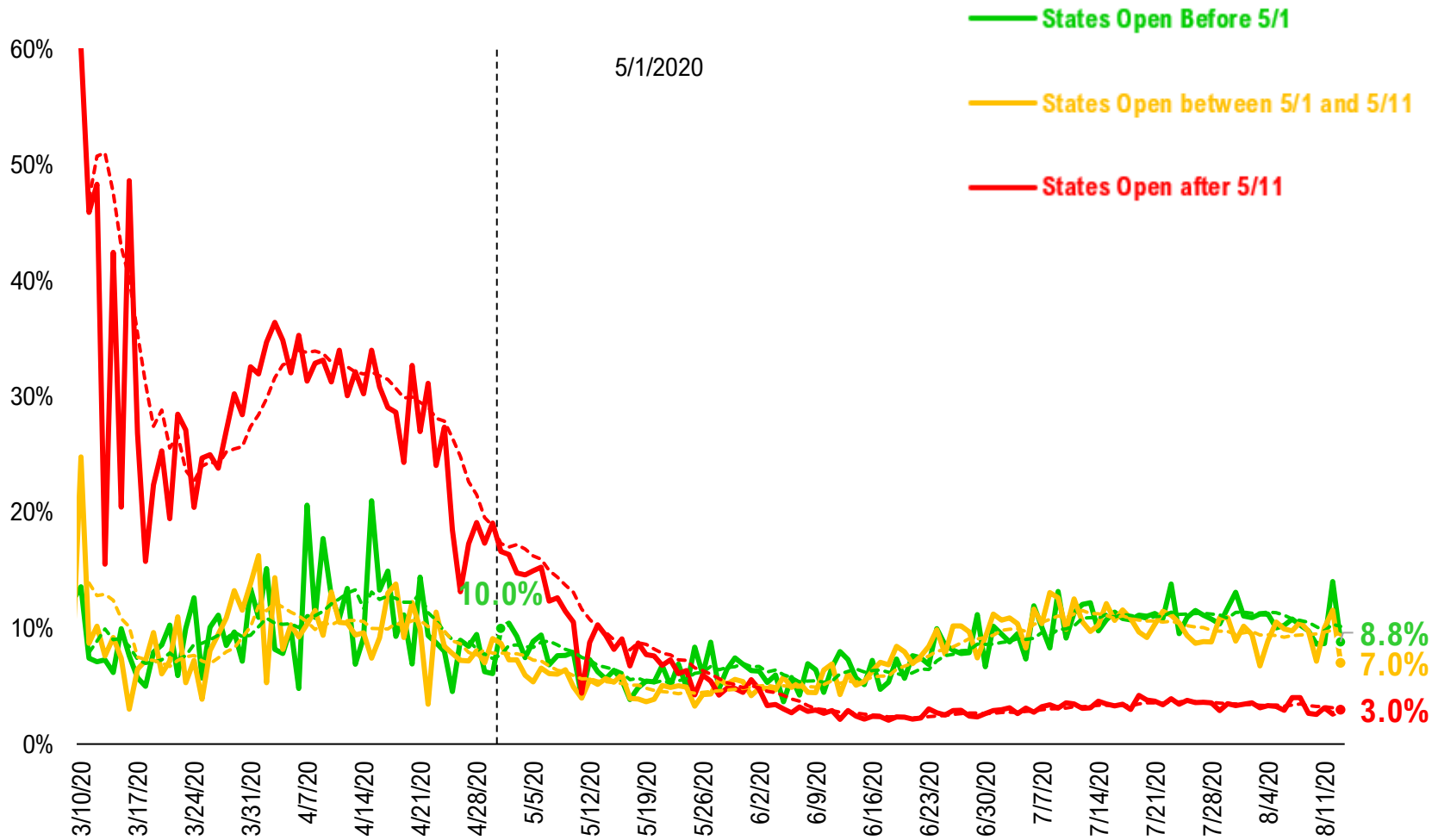


**Composite Daily Aggregate Per 1mm Pop**

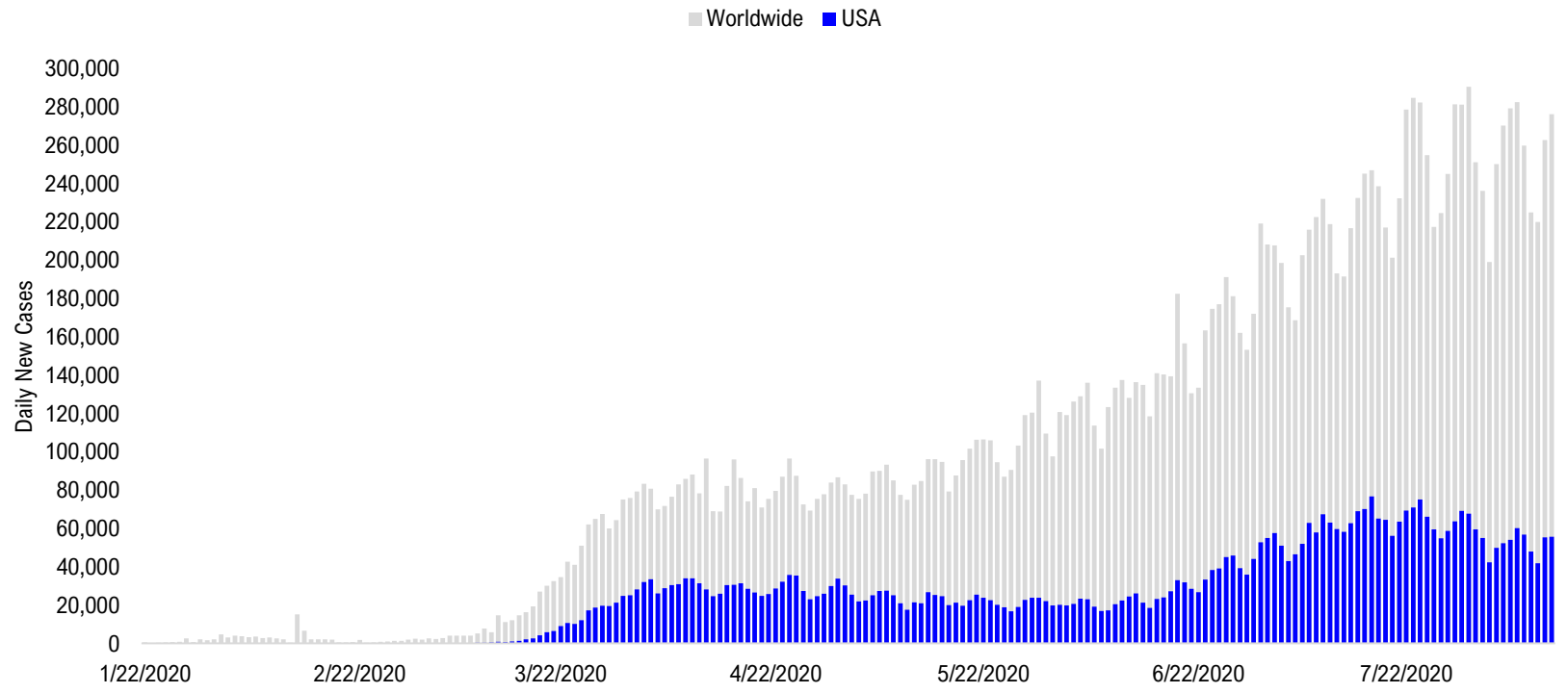


# #14: State COVID-19 Daily Positivity Rate by Reopen Date...

## Composite Daily Positivity Rate



# #15: Global COVID-19 Situation at a Glance...



3/27/2020	4/10/2020	4/24/2020	5/8/2020	5/22/2020	6/5/2020	6/19/2020	7/3/2020	7/17/2020	7/31/2020	8/12/2020
Europe 35,634	Europe 38,586	US + Canada 34,019	US + Canada 28,068	Latin America 33,875	Latin America 47,182	Latin America 58,570	Latin America 72,231	Latin America 72,602	Latin America 97,308	Latin America 82,220
US + Canada 16,624	US + Canada 34,328	Europe 30,669	Europe 27,422	US + Canada 25,073	US + Canada 21,894	US + Canada 28,473	US + Canada 55,408	US + Canada 72,365	US + Canada 67,272	Pakistan + India + Bangladesh 64,087
Latin America 1,416	Latin America 5,790	Latin America 11,820	Latin America 18,868	Europe 19,514	Europe 18,212	Pakistan + India + Bangladesh 22,981	Pakistan + India + Bangladesh 27,389	Pakistan + India + Bangladesh 39,450	Pakistan + India + Bangladesh 58,625	US + Canada 51,389
Asia ex- India+Pakistan 978	Asia ex- India+Pakistan 1,638	Pakistan + India + Bangladesh 2,801	Pakistan + India + Bangladesh 5,721	Pakistan + India + Bangladesh 9,981	Pakistan + India + Bangladesh 16,820	Europe 18,730	Europe 16,249	Africa 19,290	Europe 20,876	Europe 25,076
Africa 545	Pakistan + India + Bangladesh 1,098	Asia ex- India+Pakistan 2,369	Africa 2,945	Africa 4,166	Africa 6,467	Africa 8,930	Africa 14,218	Europe 17,457	Africa 17,999	Asia ex- India+Pakistan 9,754
Pakistan + India + Bangladesh 264	Africa 760	Africa 1,520	Asia ex- India+Pakistan 1,906	Asia ex- India+Pakistan 2,225	Asia ex- India+Pakistan 2,565	Asia ex- India+Pakistan 3,314	Asia ex- India+Pakistan 12,006	Asia ex- India+Pakistan 7,321	Asia ex- India+Pakistan 10,630	Africa 8,712



# Disclosures

This research is for the clients of FS Insight only. For important disclosures and rating histories regarding sectors or companies that are the subject of this report, please contact your sales representative or FS Insight at 150 East 52nd Street, New York, NY, 10022 USA.

## **Analyst Certification (Reg AC)**

Thomas J. Lee, the research analyst denoted by an “AC” on the cover of this report, hereby certifies that all of the views expressed in this report accurately reflect his personal views, which have not been influenced by considerations of the firm’s business or client relationships.

Neither I, nor a member of my household is an officer, director, or advisory board member of the issuer(s) or has another significant affiliation with the issuer(s) that is/are the subject of this research report. There is a possibility that we will from time to time have long or short positions in, and buy or sell, the securities or derivatives, if any, referred to in this research

## **Conflicts of Interest**

This research contains the views, opinions and recommendations of FS Insight . As of the time of writing and publication of this presentation, FS Insight does not know of, or have reason to know of any material conflicts of interest at the time of the publication of this presentation. The Company has no contractual relationship, nor have we received any compensation from any of the companies listed in this research report.

## **Analyst Industry/Sector Views**

Positive (+): The analyst expects the performance of his industry/sector coverage universe over the next 6-18 months to be attractive vs. the relevant broad market benchmark, being the S&P 500 for North America.

Neutral (N): The analyst expects the performance of his or her industry/sector coverage universe over the next 6-18 months to be in line with the relevant broad market benchmark, being the S&P 500 for North America.

Negative (-): The analyst expects his or her industry coverage universe over the next 6-18 months to underperform vs. the relevant broad market benchmark, being the S&P 500 for North America.

## **General Disclosures**

FS Insight is an independent research company and is not a registered investment advisor and is not acting as a broker dealer under any federal or state securities laws. FS Insight is a member of IRC Securities’ Research Prime Services Platform. IRC Securities is a FINRA registered broker-dealer that is focused on supporting the independent research industry. Certain personnel of FS Insight (i.e. Research Analysts) are registered representatives of IRC Securities, a FINRA member firm registered as a broker-dealer with the Securities and Exchange Commission and certain state securities regulators. As registered representatives and independent contractors of IRC Securities, such personnel may receive commissions paid to or shared with IRC Securities for transactions placed by FS Insight clients directly with IRC Securities or with securities firms that may share commissions with IRC Securities in accordance with applicable SEC and FINRA requirements. IRC Securities does not distribute the research of FS Insight , which is available to select institutional clients that have engaged FS Insight .

As registered representatives of IRC Securities our analysts must follow IRC Securities’ Written Supervisory Procedures. Notable compliance policies include (1) prohibition of insider trading or the facilitation thereof, (2) maintaining client confidentiality, (3) archival of electronic communications, and (4) appropriate use of electronic communications, amongst other compliance related policies.

FS Insight does not have the same conflicts that traditional sell-side research organizations have because FS Insight (1) does not conduct any investment banking activities, (2) does not manage any investment funds, and (3) our clients are only institutional investors.

This research is for the clients of FS Insight only. Additional information is available upon request. Information has been obtained from sources believed to be reliable but FS Insight does not warrant its completeness or accuracy except with respect to any disclosures relative to FS Insight and the analyst’s involvement (if any) with any of the subject companies of the research. All pricing is as of the market close for the securities discussed, unless otherwise stated. Opinions and estimates constitute our judgment as of the date of this material and are subject to change without notice. Past performance is not indicative of future results. This material is not intended as an offer or solicitation for the purchase or sale of any financial instrument. The opinions and recommendations herein do not take into account individual client circumstances, risk tolerance, objectives, or needs and are not intended as recommendations of particular securities, financial instruments or strategies. The recipient of this report must make its own independent decision regarding any securities or financial instruments mentioned herein. Except in circumstances where FS Insight expressly agrees otherwise in writing, FS Insight is not acting as a municipal advisor and the opinions or views contained herein are not intended to be, and do not constitute, advice, including within the meaning of Section 15B of the Securities Exchange Act of 1934. All research reports are disseminated and available to all clients simultaneously through electronic publication to our internal client website, FS Insight .com. Not all research content is redistributed to our clients or made available to third-party aggregators or the media. Please contact your sales representative if you would like to receive any of our research publications.

**Copyright 2020 FS Insight LLC. All rights reserved. No part of this material may be reprinted, sold or redistributed without the prior written consent of FS Insight LLC.**