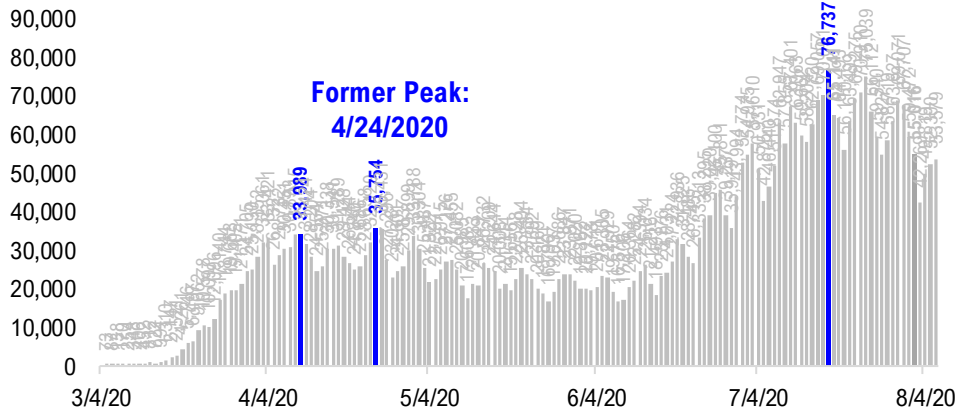


FSInsight Daily COVID-19 Chartbook

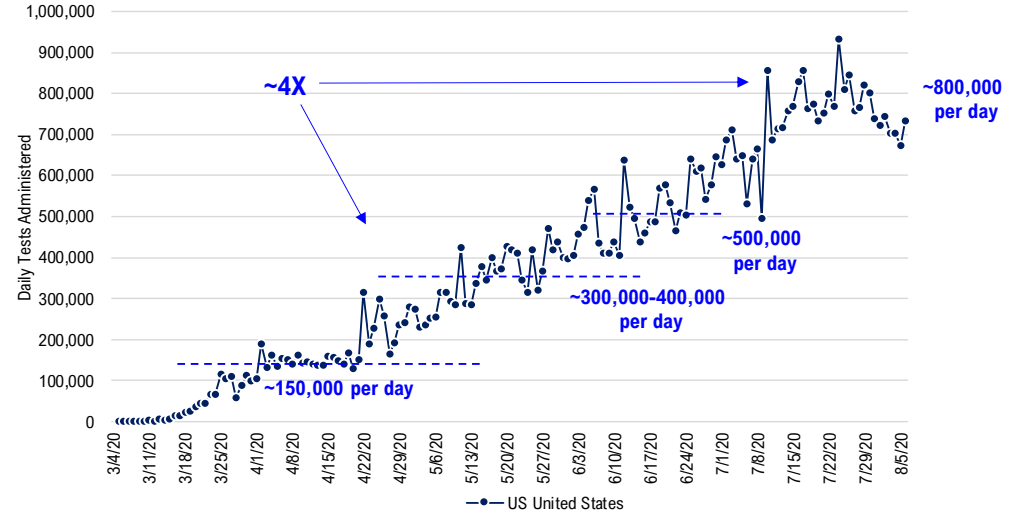


#1: USA COVID-19 Situation at a Glance...

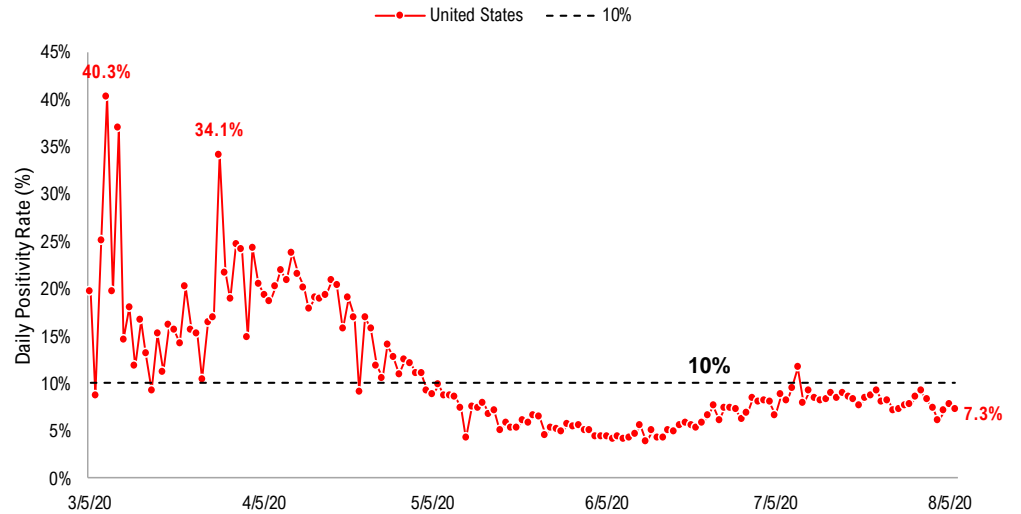
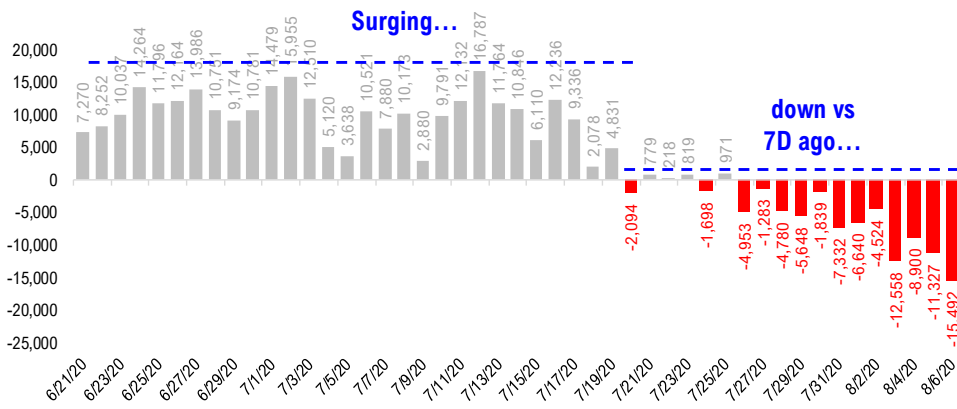
US daily new cases



USA total COVID-19 tests administered



US daily new cases rolling 7D delta - past 6 weeks

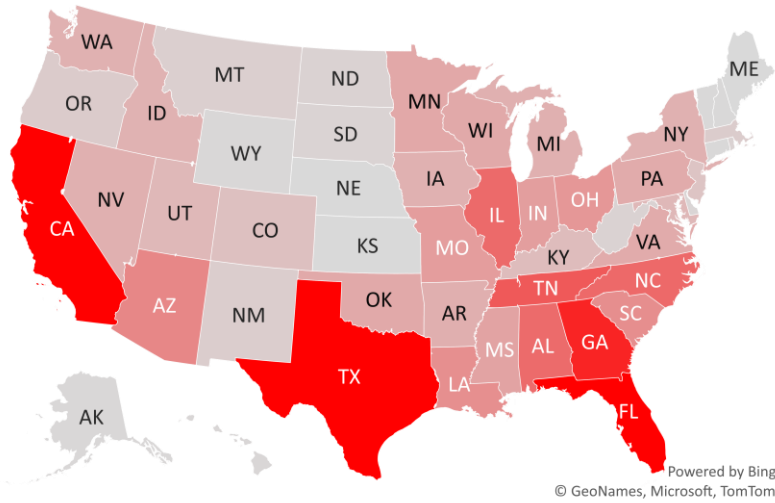


#2: USA State COVID-19 Situation at a Glance...

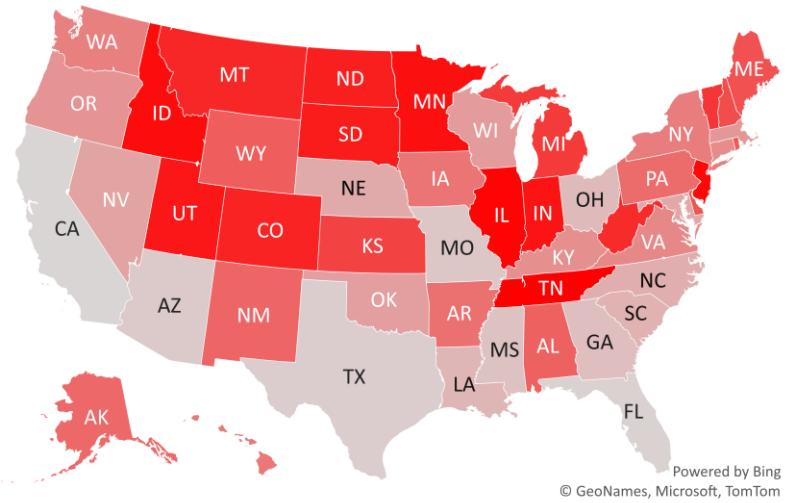
		Sorted Daily Cases		Daily Cases (3D avg) per 1mm residents		Since Peak				Sorted Daily Cases		Daily Cases (3D avg) per 1mm residents		Since Peak			
		% US Pop	8/6/20	7D Delta	8/6/20	7D Delta	# Days	% Decline in Daily Cases			% US Pop	8/6/20	7D Delta	8/6/20	7D Delta	# Days	% Decline in Daily Cases
United States		100%	53,579	-15,492	158	-36	20	-28%	United States		100%	53,579	-15,492	158	-36	20	-28%
States:																	
1	Florida	6.5%	7,650	-2,306	287	-157	24	-52%	29	Maryland	1.8%	579	-313	103	-24	77	-51%
2	Texas	8.7%	7,598	-1,202	293	-8	20	-29%	30	Kentucky	1.3%	513	-146	130	-3	12	-21%
3	California	11.9%	5,258	-4,939	127	-83	13	-56%	31	Colorado	1.7%	448	+40	85	-10	102	-33%
4	Georgia	3.2%	3,182	-781	297	-62	12	-27%	32	New Jersey	2.7%	374	+170	41	-3	123	-91%
5	Tennessee	2.1%	2,252	+203	279	-33	9	-31%	33	Oregon	1.3%	246	-164	68	-15	5	-22%
6	North Carolina	3.2%	1,979	-365	150	-36	19	-29%	34	Massachusetts	2.1%	231	-183	59	+2	103	-88%
7	Illinois	3.8%	1,953	+181	136	+25	84	-42%	35	New Mexico	0.6%	207	-45	102	-39	8	-41%
8	Alabama	1.5%	1,938	-42	267	-49	12	-38%	36	Montana	0.3%	173	+35	115	-20	6	-24%
9	Arizona	2.2%	1,444	-1,081	190	-129	35	-68%	37	Puerto Rico	1.0%	140	-80	74	+22	3	-36%
10	South Carolina	1.6%	1,325	-401	249	-85	25	-35%	38	Rhode Island	0.3%	130	-20	115	-22	103	-72%
11	Louisiana	1.4%	1,303	-405	334	+7	16	-42%	39	North Dakota	0.2%	120	+46	171	+34	13	-4%
12	Ohio	3.5%	1,166	-567	100	-27	6	-25%	40	West Virginia	0.5%	118	+22	57	-12	27	-42%
13	Missouri	1.8%	1,062	-1,022	190	-124	7	-40%	41	South Dakota	0.3%	105	+61	95	+5	89	-59%
14	Indiana	2.0%	1,040	+86	128	+12	12	-9%	42	District of Columbia	0.2%	75	+17	97	+3	95	-70%
15	Mississippi	0.9%	956	-819	367	-151	7	-29%	43	Delaware	0.3%	69	-18	106	+9	100	-69%
16	Minnesota	1.7%	861	+116	123	+11	11	-14%	44	Hawaii	0.4%	52	-72	87	+21	1	-29%
17	Wisconsin	1.8%	839	-220	140	-14	12	-19%	45	Wyoming	0.2%	35	-23	63	-32	99	-37%
18	Oklahoma	1.2%	837	-280	236	-21	9	-24%	46	Alaska	0.2%	35	-46	65	-51	4	-64%
19	Virginia	2.6%	818	-93	108	-3	71	-31%	47	New Hampshire	0.4%	23	-8	20	-5	96	-78%
20	Pennsylvania	3.9%	807	-53	62	-12	118	-56%	48	U.S. Virgin Islands	0.0%	20	+20	193	+128	0	0%
21	Arkansas	0.9%	735	-56	269	+13	12	-11%	49	Connecticut	1.1%	20	-110	17	-11	106	-96%
22	Nevada	0.9%	729	-289	255	-69	19	-41%	50	Vermont	0.2%	9	+8	10	+7	123	-89%
23	Michigan	3.0%	722	+7	68	-11	104	-44%	51	Guam	0.0%	8	+5	58	+42	47	-15%
24	Washington	2.3%	705	-75	84	-19	22	-38%	52	Maine	0.4%	5	-17	7	-7	76	-87%
25	New York	5.9%	703	-74	36	+1	118	-93%	53	Northern Mariana Islands	0.0%	1	-1	6	-6	125	-83%
26	Iowa	1.0%	702	-59	161	+4	26	-29%	54	Nebraska	0.6%	0	-344	92	-58	96	-65%
27	Idaho	0.5%	692	+125	322	+32	20	-15%	55	Kansas	0.9%	0	+0	96	+16	22	-64%
28	Utah	1.0%	587	+85	144	+10	19	-43%	56	American Samoa	0.0%	0	+0	0	+0	-	-

#3: USA COVID-19 Heat Map...

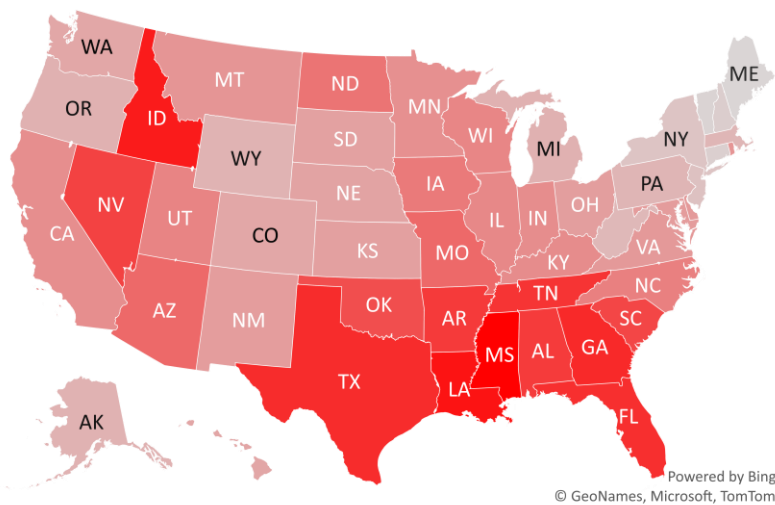
Daily Case Increases



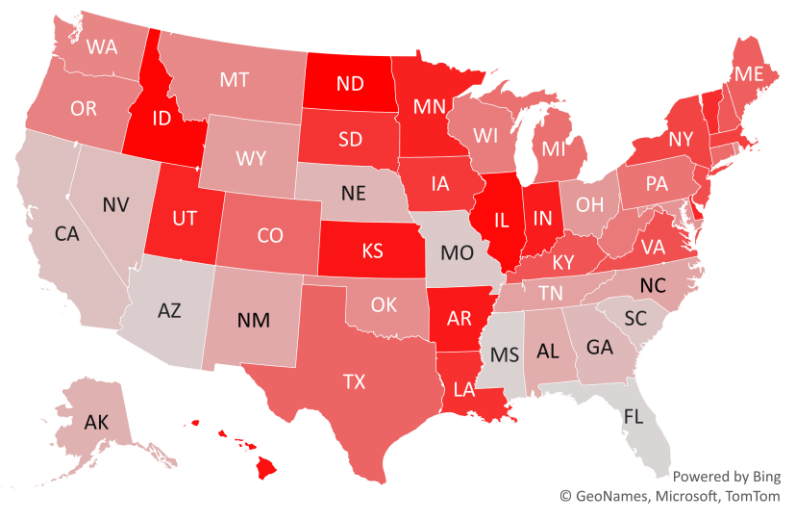
7D Delta in Daily New Cases



Daily Case Increases per 1mm Resident (3D Avg)



7D Delta in Daily New Cases per 1mm (3D Avg)

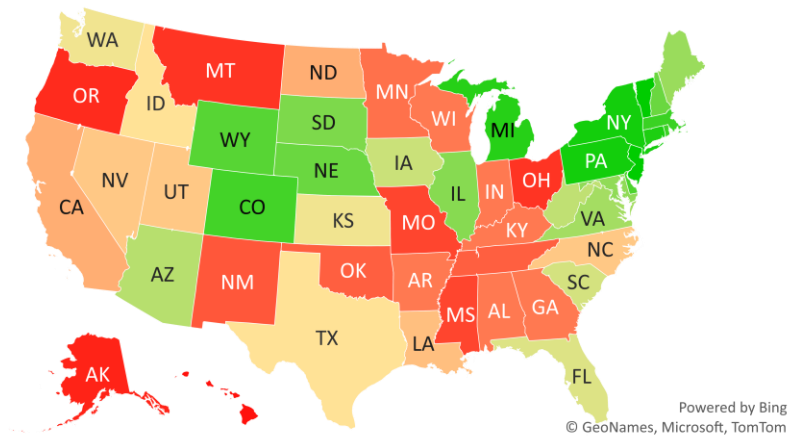


#4: # of Days since Daily Case Peaked by States...

Days since Daily Cases (3D Avg) Peak (as of 8/6)

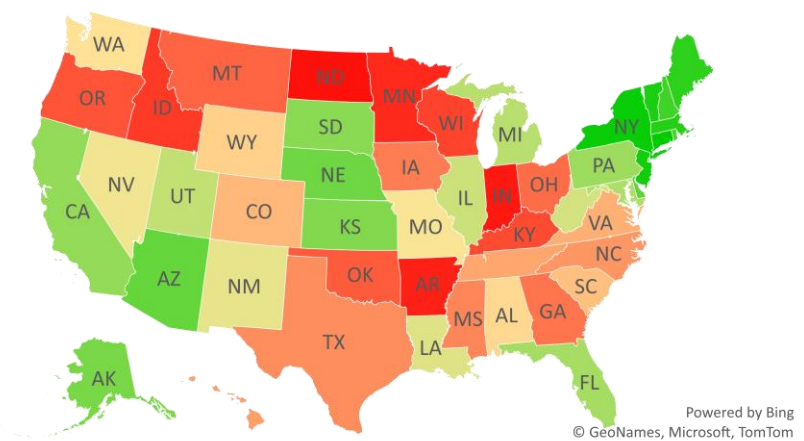
Sorted					Sorted				
	Peak Date	8/6/20	% off the Peak	% US Pop		Peak Date	8/6/20	% off the Peak	% US Pop
United States	7/17/20	20	-28%	100%	United States	7/17/20	20	-28%	100%
States:					States:				
Northern Mariana I.	4/3/20	125	-83%	0.0%	Texas	7/17/20	20	-29%	8.7%
Vermont	4/5/20	123	-89%	0.2%	Idaho	7/17/20	20	-15%	0.5%
New Jersey	4/5/20	123	-91%	2.7%	Utah	7/18/20	19	-43%	1.0%
Pennsylvania	4/10/20	118	-56%	3.9%	Nevada	7/18/20	19	-41%	0.9%
New York	4/10/20	118	-93%	5.9%	North Carolina	7/18/20	19	-29%	3.2%
Connecticut	4/22/20	106	-96%	1.1%	Louisiana	7/21/20	16	-42%	1.4%
Michigan	4/24/20	104	-44%	3.0%	North Dakota	7/24/20	13	-4%	0.2%
Rhode Island	4/25/20	103	-72%	0.3%	California	7/24/20	13	-56%	11.9%
Massachusetts	4/25/20	103	-88%	2.1%	Wisconsin	7/25/20	12	-19%	1.8%
Colorado	4/26/20	102	-33%	1.7%	Kentucky	7/25/20	12	-21%	1.3%
Delaware	4/28/20	100	-69%	0.3%	Indiana	7/25/20	12	-9%	2.0%
Wyoming	4/29/20	99	-37%	0.2%	Georgia	7/25/20	12	-27%	3.2%
New Hampshire	5/2/20	96	-78%	0.4%	Arkansas	7/25/20	12	-11%	0.9%
Nebraska	5/2/20	96	-65%	0.6%	Alabama	7/25/20	12	-38%	1.5%
District of Columbia	5/3/20	95	-70%	0.2%	Minnesota	7/26/20	11	-14%	1.7%
South Dakota	5/9/20	89	-59%	0.3%	Tennessee	7/28/20	9	-31%	2.1%
Illinois	5/14/20	84	-42%	3.8%	Oklahoma	7/28/20	9	-24%	1.2%
Maryland	5/21/20	77	-51%	1.8%	New Mexico	7/29/20	8	-41%	0.6%
Maine	5/22/20	76	-87%	0.4%	Mississippi	7/30/20	7	-29%	0.9%
Virginia	5/27/20	71	-31%	2.6%	Missouri	7/30/20	7	-40%	1.8%
Guam	6/20/20	47	-15%	0.0%	Ohio	7/31/20	6	-25%	3.5%
Arizona	7/2/20	35	-68%	2.2%	Montana	7/31/20	6	-24%	0.3%
West Virginia	7/10/20	27	-42%	0.5%	Oregon	8/1/20	5	-22%	1.3%
Iowa	7/11/20	26	-29%	1.0%	Alaska	8/2/20	4	-64%	0.2%
South Carolina	7/12/20	25	-35%	1.6%	Puerto Rico	8/3/20	3	-36%	1.0%
Florida	7/13/20	24	-52%	6.5%	Hawaii	8/5/20	1	-29%	0.4%
Washington	7/15/20	22	-38%	2.3%	U.S. Virgin Islands	8/6/20	0	0%	0.0%
Kansas	7/15/20	22	-64%	0.9%					

Days since Daily Case Peak: Greener = More Days



Powered by Bing
© GeoNames, Microsoft, TomTom

Daily Cases % off the Peak: Greener = Larger Decline



Powered by Bing
© GeoNames, Microsoft, TomTom

#5: US New Cases by States... (sorted by today's new cases)

Sorted
Last 3-day trend growth rates

Sorted
Last 3-day trend growth rates

The stats for NE are not available as of Thursday 7 PM ET...

The stats for NE are not available as of Thursday 7 PM ET...

	8/4/20	8/5/20	8/6/20	
United States	49,819	52,300	53,579	+1,279
States:				
1 Florida	5,446	5,409	7,650	<--higher
2 Texas	9,167	8,706	7,598	
3 California	4,526	5,295	5,258	
4 Georgia	2,513	3,765	3,182	
5 Tennessee	1,805	1,657	2,252	<--higher
6 North Carolina	1,629	1,127	1,979	<--higher
7 Illinois	1,471	1,759	1,953	
8 Alabama	1,041	952	1,938	<--higher
9 Arizona	1,008	1,698	1,444	
10 South Carolina	1,239	1,282	1,325	
11 Louisiana	1,874	1,482	1,303	
12 Ohio	1,143	1,199	1,166	
13 Missouri	1,193	1,241	1,062	
14 Indiana	822	720	1,040	<--higher
15 Mississippi	1,074	1,245	956	
16 Minnesota	602	617	861	<--higher
17 Wisconsin	728	884	839	
18 Oklahoma	861	1,101	837	
19 Virginia	1,145	798	818	
20 Pennsylvania	854	705	807	
21 Arkansas	784	912	735	
22 Nevada	980	649	729	
23 Michigan	664	657	722	
24 Washington	542	664	705	
25 New York	746	636	703	
26 Iowa	201	617	702	
27 Idaho	559	473	692	<--higher
28 Utah	378	421	587	<--higher

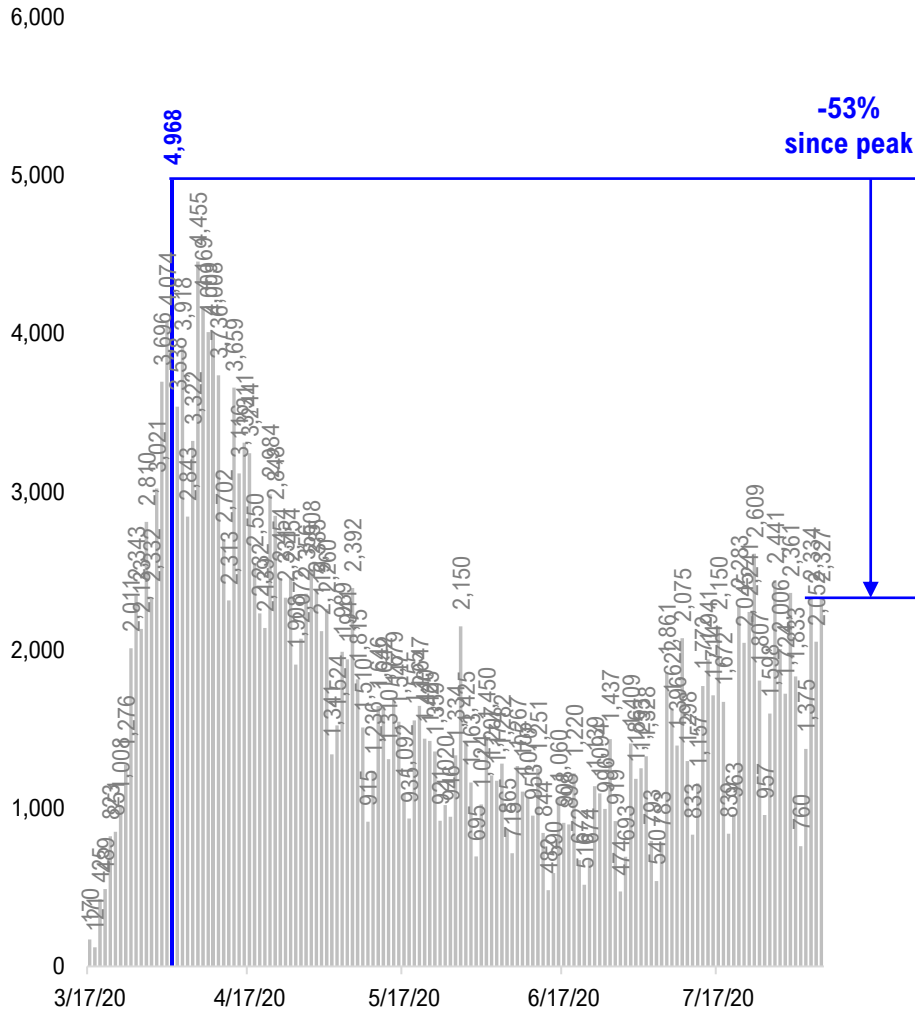
	8/4/20	8/5/20	8/6/20	
United States	49,819	52,300	53,579	+1,279
States:				
29 Maryland	710	572	579	
30 Kentucky	689	544	513	
31 Colorado	426	594	448	
32 New Jersey	356	357	374	
33 Oregon	333	280	246	
34 Massachusetts	546	440	231	
35 New Mexico	210	226	207	
36 Montana	82	115	173	<--higher
37 Puerto Rico	300	271	140	
38 Rhode Island	144	91	130	
39 North Dakota	148	124	120	
40 West Virginia	78	108	118	
41 South Dakota	59	89	105	
42 District of Columbia	85	45	75	
43 Delaware	82	159	69	
44 Hawaii	143	173	52	
45 Wyoming	36	39	35	
46 Alaska	53	55	35	
47 New Hampshire	33	26	23	
48 U.S. Virgin Islands	24	18	20	
49 Connecticut	48	115	20	
50 Vermont	5	5	9	
51 Guam	7	14	8	
52 Maine	5	17	5	
53 Northern Mariana Islands	0	0	1	
54 Nebraska	222	311	0	
55 Kansas	0	841	0	
56 American Samoa	0	0	0	

<--higher - if the state has 20% or more daily cases than prior two days...
Source: Fundstrat, COVID-19 Tracking Project, State Department of Health

#6: US Daily Hospitalizations...(aggregated by data type)

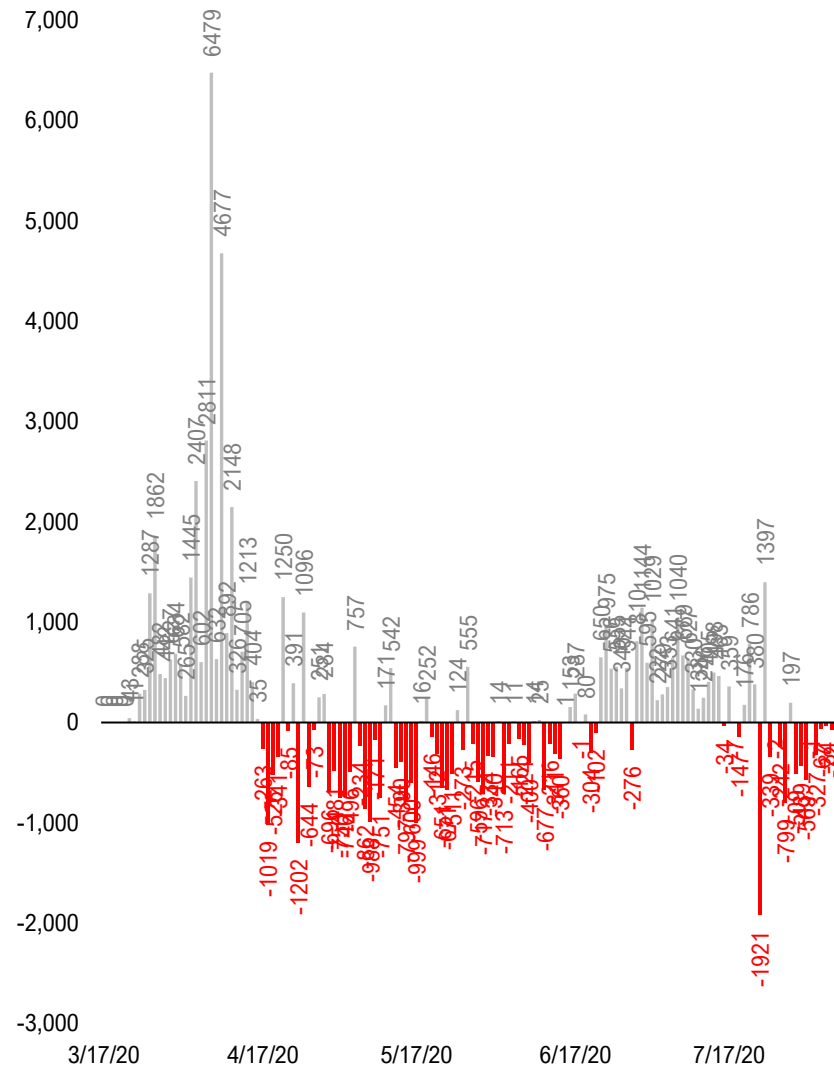
US Gross Hospitalizations

(Composite of 33 states that report "gross hospitalizations")



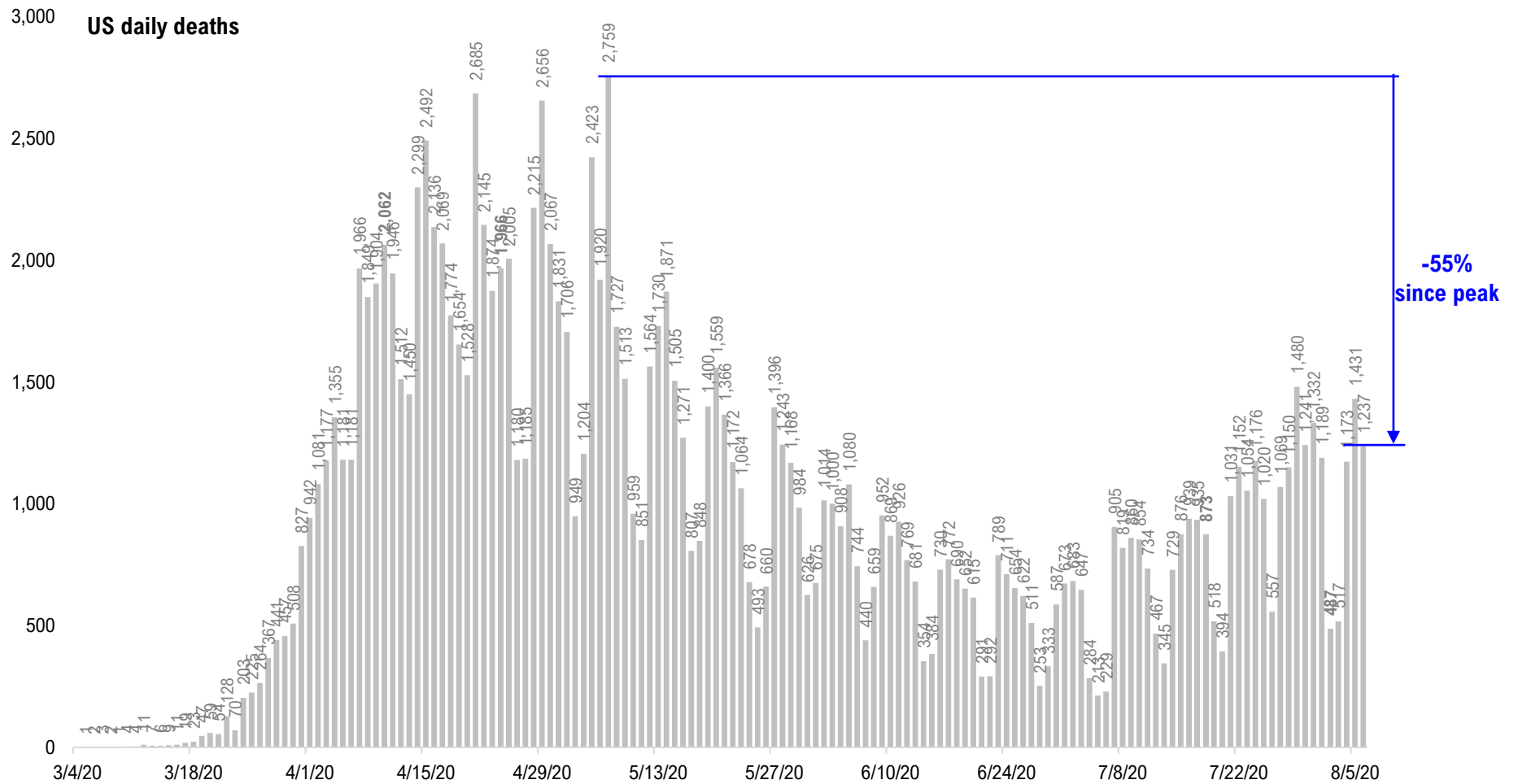
US Net Hospitalizations

(Composite of 18 states that report "net/current hospitalizations")

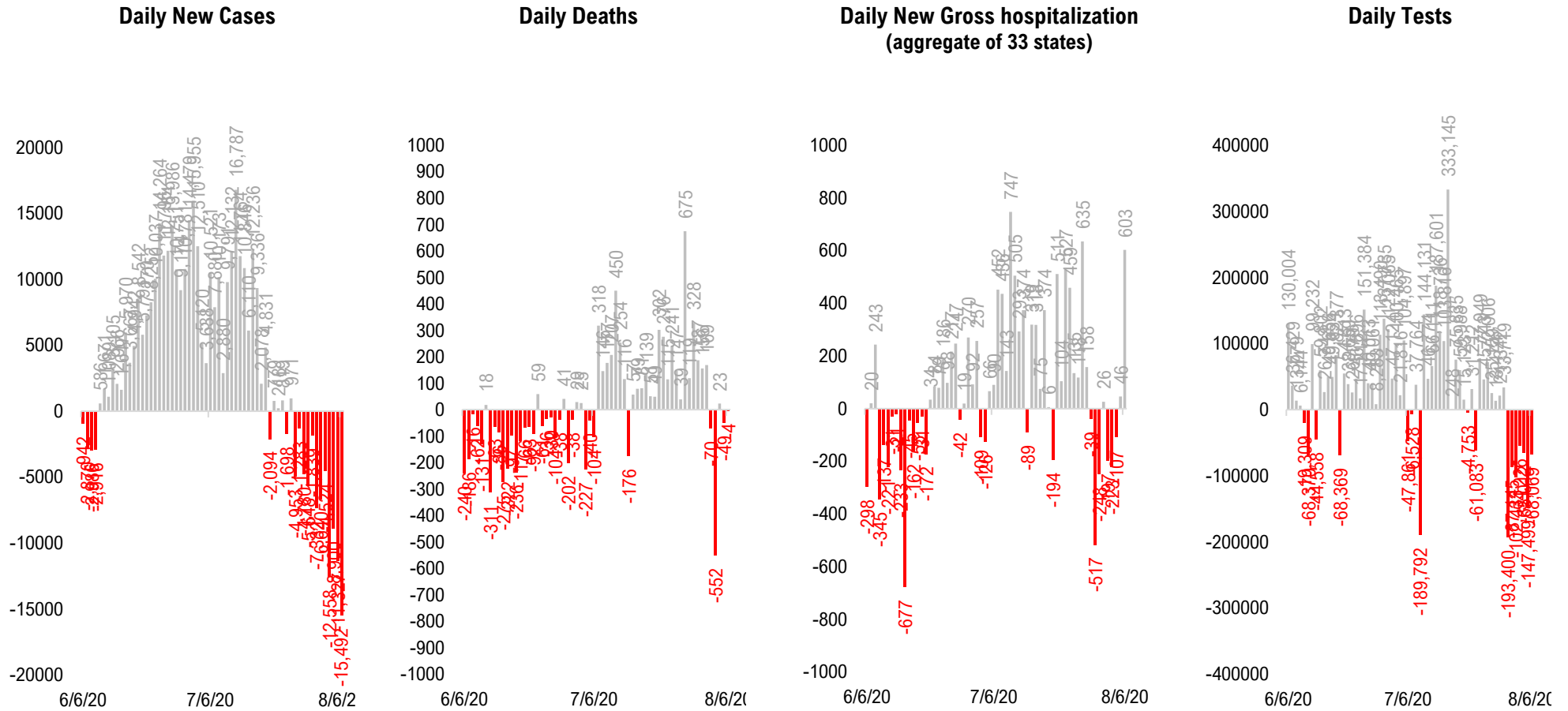


#7: US Daily New Fatalities...

US daily COVID-19 Fatalities

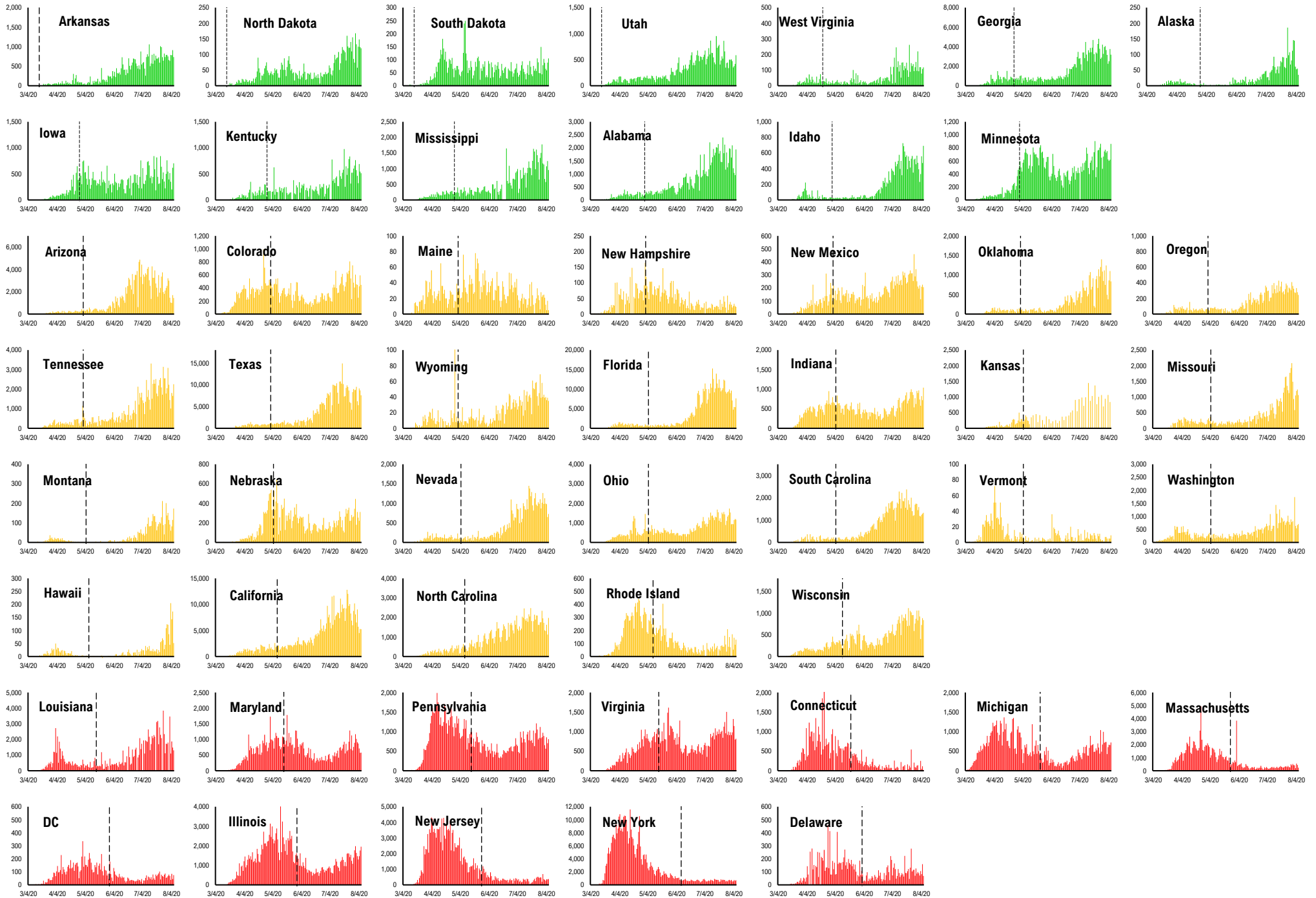


#8: Rolling 7-Day Change in the Key Metrics... (Past 8 Weeks)

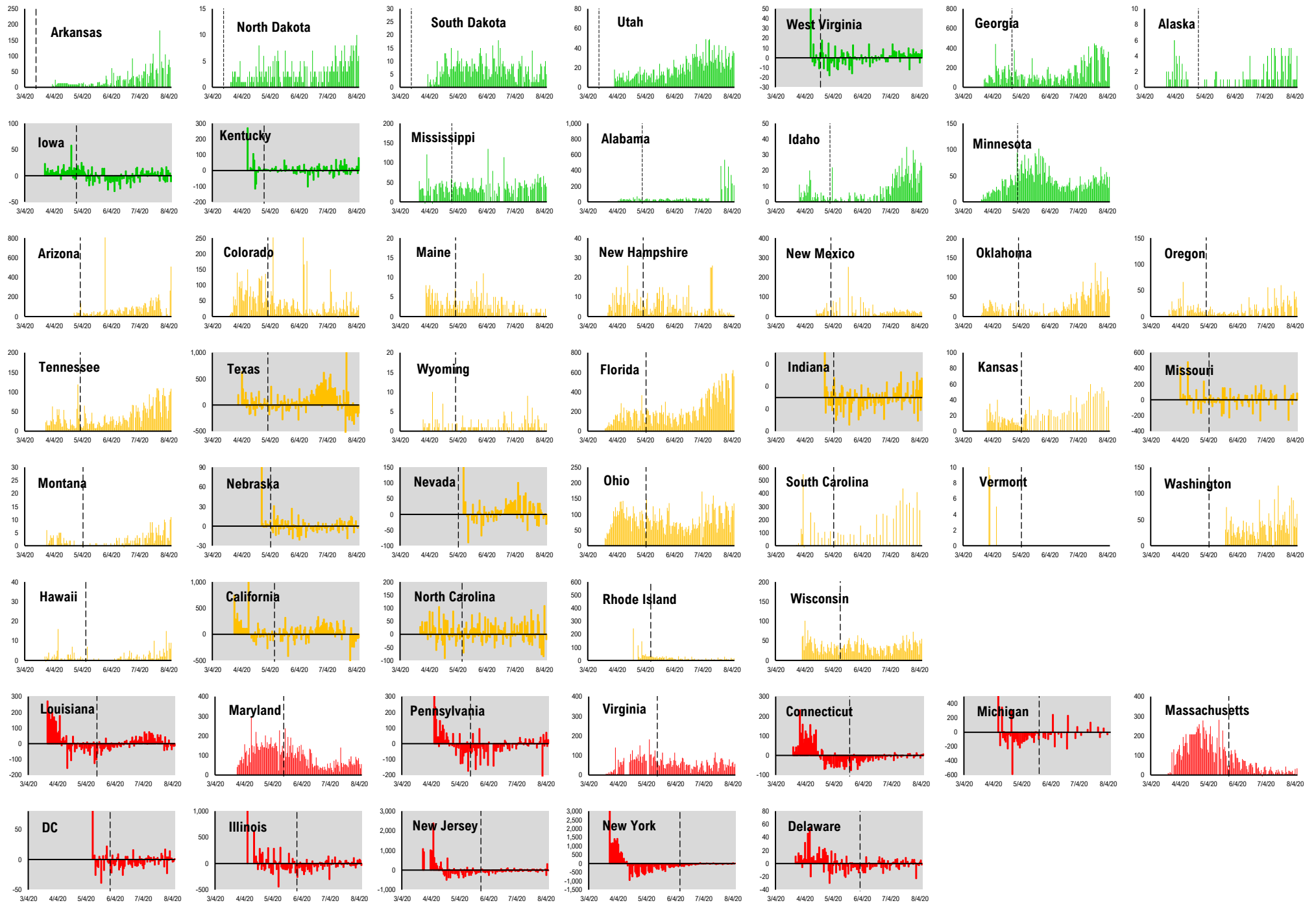


Source: Fundstrat, COVID-19 Tracking Project, State Department of Health

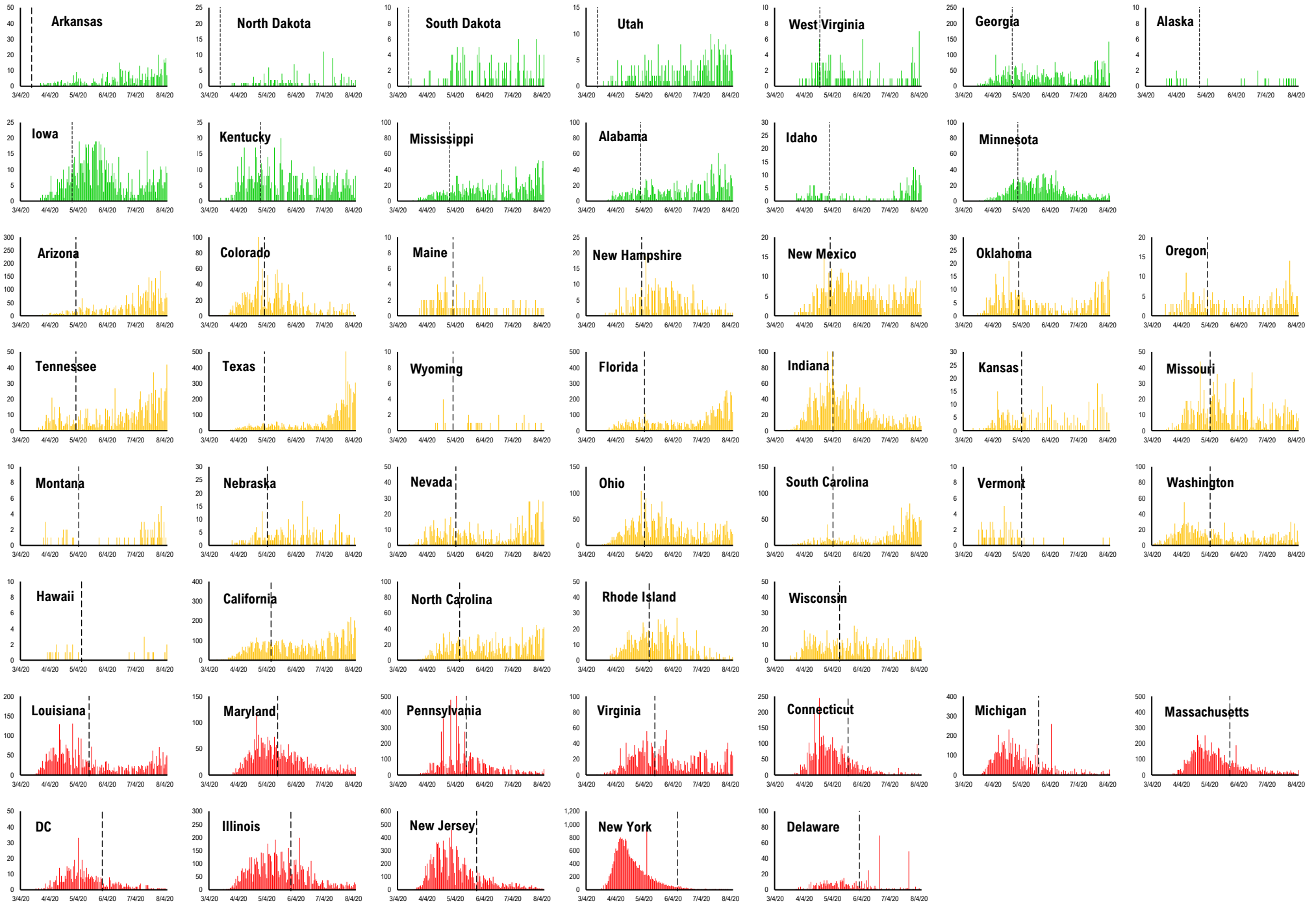
#9: Daily New Cases by States... (sorted by "open" date)



#10: Daily Hospitalizations by States... (sorted by "open" date)



#11: Daily New Deaths by States... (sorted by "open" date)



#12: State COVID-19 situation by Reopen Date...

Daily Cases

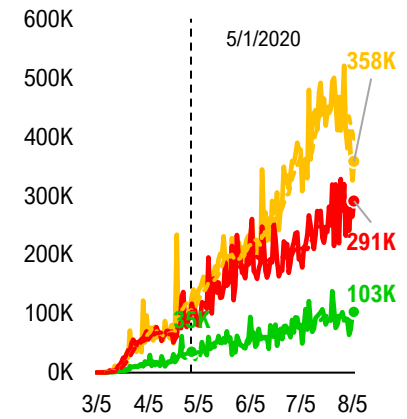
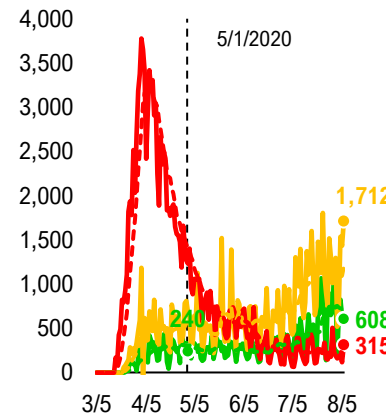
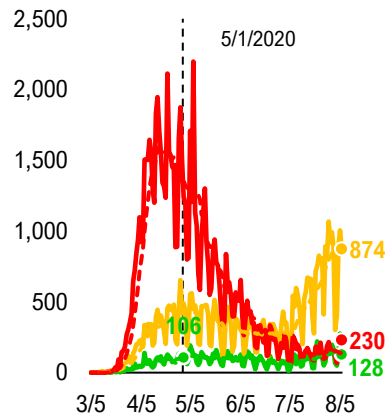
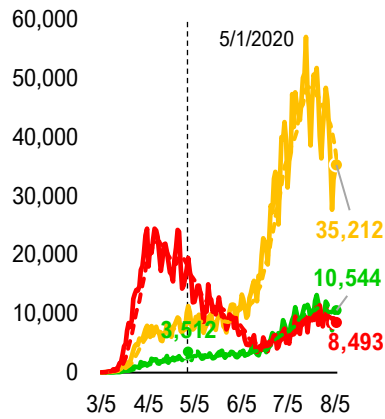
Daily Deaths

Daily Hospitalization

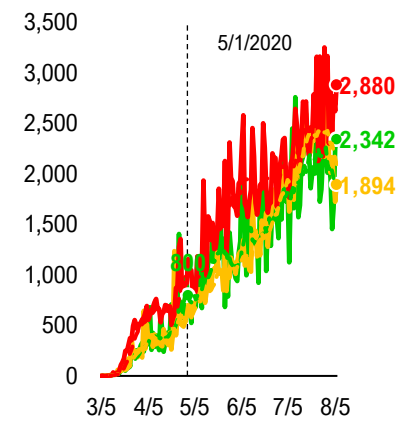
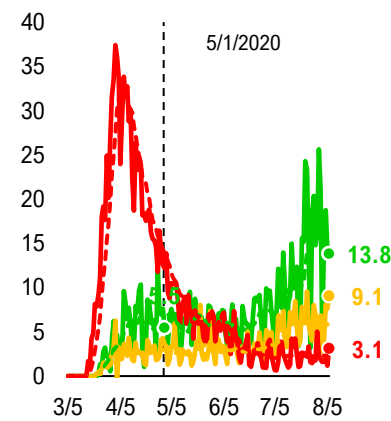
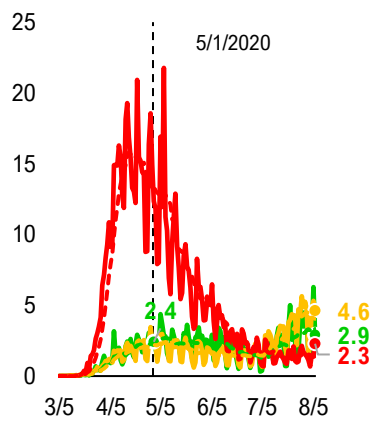
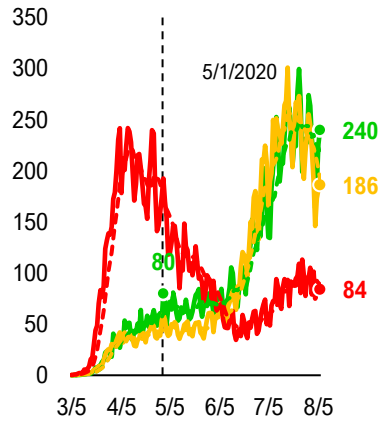
Daily Testing

— States Open Before 5/1 — States Open between 5/1 and 5/11 — States Open after 5/11

Composite Daily Aggregate

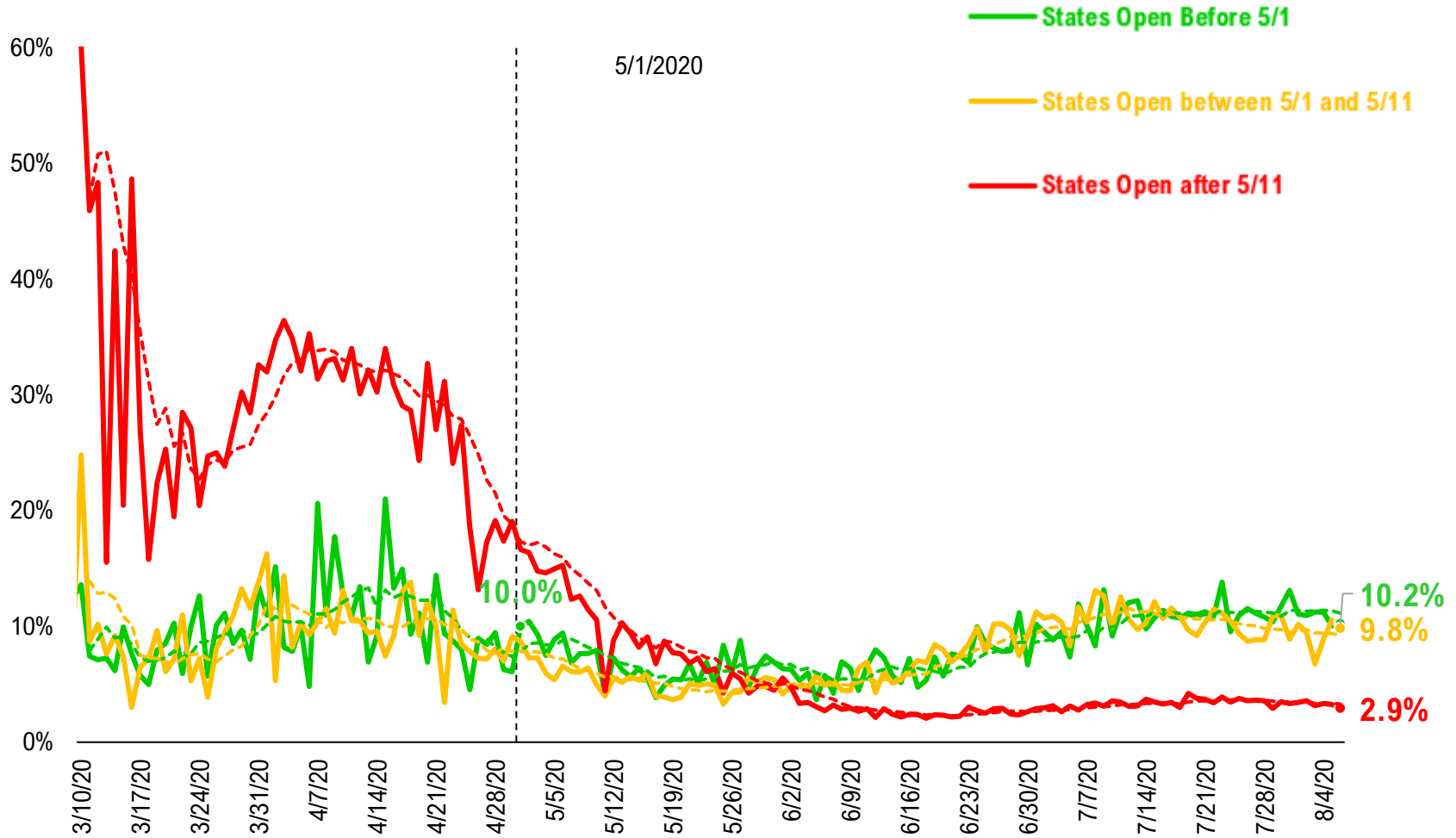


Composite Daily Aggregate Per 1mm Pop

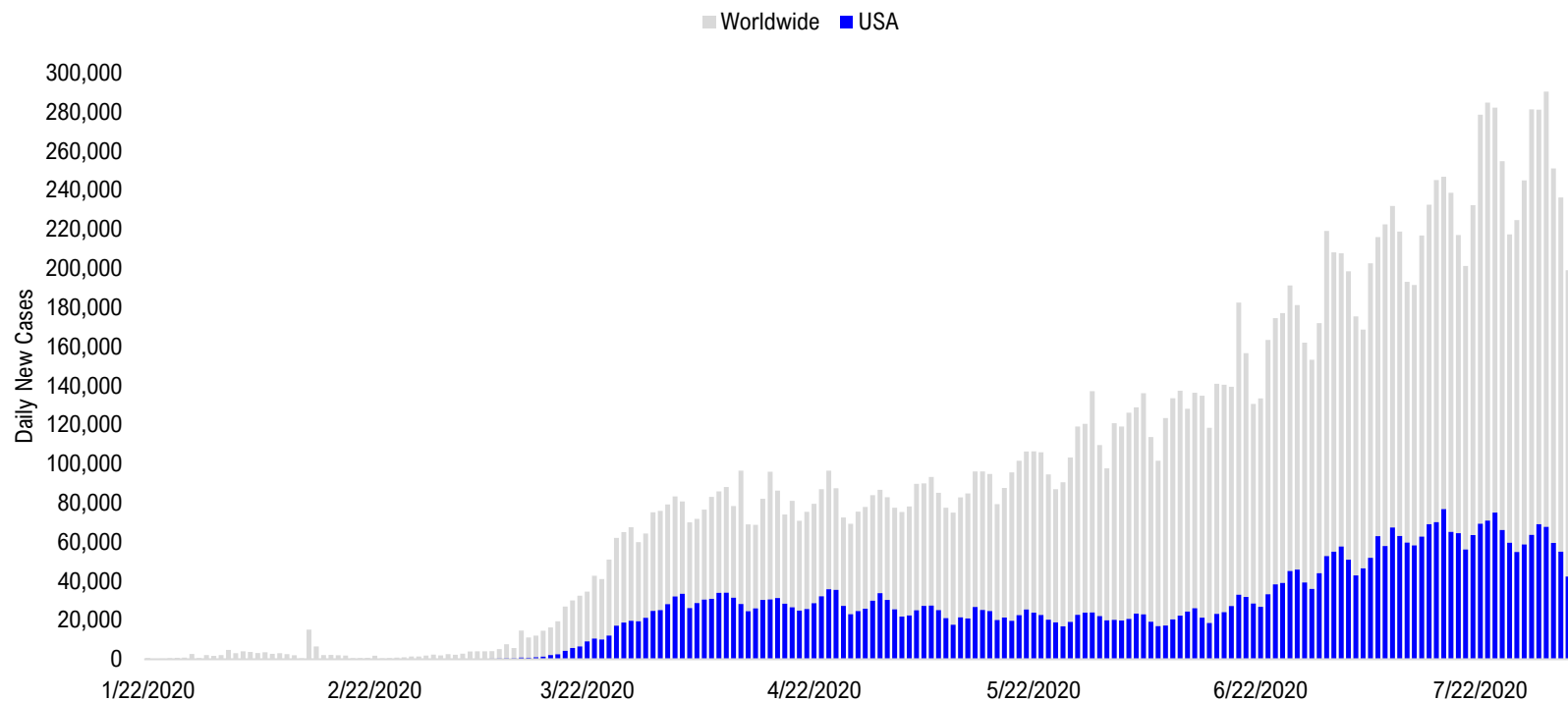


#13: State COVID-19 Daily Positivity Rate by Reopen Date...

Composite Daily Positivity Rate



#14: Global COVID-19 Situation at a Glance...



3/20/2020	4/3/2020	4/17/2020	5/1/2020	5/15/2020	5/29/2020	6/12/2020	6/26/2020	7/10/2020	7/24/2020	8/5/2020
Europe 18,086	Europe 39,667	Europe 40,604	US + Canada 31,572	US + Canada 25,443	Latin America 42,759	Latin America 51,123	Latin America 68,227	Latin America 73,176	Latin America 97,008	Latin America 78,999
US + Canada 4,331	US + Canada 29,751	US + Canada 32,649	Europe 25,383	Latin America 25,394	US + Canada 22,796	US + Canada 22,798	US + Canada 41,092	US + Canada 63,055	US + Canada 72,289	Pakistan + India + Bangladesh 56,069
Asia ex- India+Pakistan 602	Latin America 2,723	Latin America 6,026	Latin America 13,595	Europe 22,139	Europe 19,027	Pakistan + India + Bangladesh 18,309	Pakistan + India + Bangladesh 24,668	Pakistan + India + Bangladesh 32,386	Pakistan + India + Bangladesh 52,184	US + Canada 48,551
Latin America 560	Asia ex- India+Pakistan 1,433	Asia ex- India+Pakistan 2,264	Pakistan + India + Bangladesh 3,762	Pakistan + India + Bangladesh 6,133	Pakistan + India + Bangladesh 12,032	Europe 18,047	Europe 17,928	Africa 17,127	Africa 20,063	Europe 22,549
Pakistan + India + Bangladesh 181	Africa 711	Pakistan + India + Bangladesh 1,649	Asia ex- India+Pakistan 2,022	Africa 2,942	Africa 5,307	Africa 7,322	Africa 11,684	Europe 16,305	Europe 18,783	Africa 12,044
Africa 162	Pakistan + India + Bangladesh 627	Africa 1,176	Africa 1,926	Asia ex- India+Pakistan 2,033	Asia ex- India+Pakistan 2,762	Asia ex- India+Pakistan 3,064	Asia ex- India+Pakistan 3,866	Asia ex- India+Pakistan 7,373	Asia ex- India+Pakistan 8,636	Asia ex- India+Pakistan 10,894

Disclosures

This research is for the clients of FS Insight only. For important disclosures and rating histories regarding sectors or companies that are the subject of this report, please contact your sales representative or FS Insight at 150 East 52nd Street, New York, NY, 10022 USA.

Analyst Certification (Reg AC)

Thomas J. Lee, the research analyst denoted by an “AC” on the cover of this report, hereby certifies that all of the views expressed in this report accurately reflect his personal views, which have not been influenced by considerations of the firm’s business or client relationships.

Neither I, nor a member of my household is an officer, director, or advisory board member of the issuer(s) or has another significant affiliation with the issuer(s) that is/are the subject of this research report. There is a possibility that we will from time to time have long or short positions in, and buy or sell, the securities or derivatives, if any, referred to in this research

Conflicts of Interest

This research contains the views, opinions and recommendations of FS Insight . As of the time of writing and publication of this presentation, FS Insight does not know of, or have reason to know of any material conflicts of interest at the time of the publication of this presentation. The Company has no contractual relationship, nor have we received any compensation from any of the companies listed in this research report.

Analyst Industry/Sector Views

Positive (+): The analyst expects the performance of his industry/sector coverage universe over the next 6-18 months to be attractive vs. the relevant broad market benchmark, being the S&P 500 for North America.

Neutral (N): The analyst expects the performance of his or her industry/sector coverage universe over the next 6-18 months to be in line with the relevant broad market benchmark, being the S&P 500 for North America.

Negative (-): The analyst expects his or her industry coverage universe over the next 6-18 months to underperform vs. the relevant broad market benchmark, being the S&P 500 for North America.

General Disclosures

FS Insight is an independent research company and is not a registered investment advisor and is not acting as a broker dealer under any federal or state securities laws. FS Insight is a member of IRC Securities’ Research Prime Services Platform. IRC Securities is a FINRA registered broker-dealer that is focused on supporting the independent research industry. Certain personnel of FS Insight (i.e. Research Analysts) are registered representatives of IRC Securities, a FINRA member firm registered as a broker-dealer with the Securities and Exchange Commission and certain state securities regulators. As registered representatives and independent contractors of IRC Securities, such personnel may receive commissions paid to or shared with IRC Securities for transactions placed by FS Insight clients directly with IRC Securities or with securities firms that may share commissions with IRC Securities in accordance with applicable SEC and FINRA requirements. IRC Securities does not distribute the research of FS Insight , which is available to select institutional clients that have engaged FS Insight .

As registered representatives of IRC Securities our analysts must follow IRC Securities’ Written Supervisory Procedures. Notable compliance policies include (1) prohibition of insider trading or the facilitation thereof, (2) maintaining client confidentiality, (3) archival of electronic communications, and (4) appropriate use of electronic communications, amongst other compliance related policies.

FS Insight does not have the same conflicts that traditional sell-side research organizations have because FS Insight (1) does not conduct any investment banking activities, (2) does not manage any investment funds, and (3) our clients are only institutional investors.

This research is for the clients of FS Insight only. Additional information is available upon request. Information has been obtained from sources believed to be reliable but FS Insight does not warrant its completeness or accuracy except with respect to any disclosures relative to FS Insight and the analyst’s involvement (if any) with any of the subject companies of the research. All pricing is as of the market close for the securities discussed, unless otherwise stated. Opinions and estimates constitute our judgment as of the date of this material and are subject to change without notice. Past performance is not indicative of future results. This material is not intended as an offer or solicitation for the purchase or sale of any financial instrument. The opinions and recommendations herein do not take into account individual client circumstances, risk tolerance, objectives, or needs and are not intended as recommendations of particular securities, financial instruments or strategies. The recipient of this report must make its own independent decision regarding any securities or financial instruments mentioned herein. Except in circumstances where FS Insight expressly agrees otherwise in writing, FS Insight is not acting as a municipal advisor and the opinions or views contained herein are not intended to be, and do not constitute, advice, including within the meaning of Section 15B of the Securities Exchange Act of 1934. All research reports are disseminated and available to all clients simultaneously through electronic publication to our internal client website, FS Insight .com. Not all research content is redistributed to our clients or made available to third-party aggregators or the media. Please contact your sales representative if you would like to receive any of our research publications.

Copyright 2020 FS Insight LLC. All rights reserved. No part of this material may be reprinted, sold or redistributed without the prior written consent of FS Insight LLC.